

Data Path : Z:\pestpcbsrv\HPCHEM1\ECD_D\Data\PD091724\
 Data File : PD085298.D
 Signal(s) : Signal #1: ECD1A.ch Signal #2: ECD2B.ch
 Acq On : 18 Sep 2024 05:42
 Operator : AR\AJ
 Sample : P3910-11
 Misc :
 ALS Vial : 59 Sample Multiplier: 1

Instrument :
 ECD_D
ClientSampleId :
 DDC30

Manual Integrations
APPROVED

Reviewed By :Abdul Mirza 09/19/2024
 Supervised By :Ankita Jodhani 09/19/2024

Integration File signal 1: autoint1.e
 Integration File signal 2: autoint2.e
 Quant Time: Sep 18 07:26:24 2024
 Quant Method : Z:\pestpcbsrv\HPCHEM1\ECD_D\Method\PD082524CLP.M
 Quant Title : GC Extractables
 QLast Update : Tue Aug 27 02:47:48 2024
 Response via : Initial Calibration
 Integrator: ChemStation

Volume Inj. : 1 µl
 Signal #1 Phase : ZB-MR1 Signal #2 Phase: ZB-MR2
 Signal #1 Info : 30M x 0.32mm x0.5 Signal #2 Info : 30M x 0.32mm x 0.25µm

Compound	RT#1	RT#2	Resp#1	Resp#2	ng/ml	ng/ml

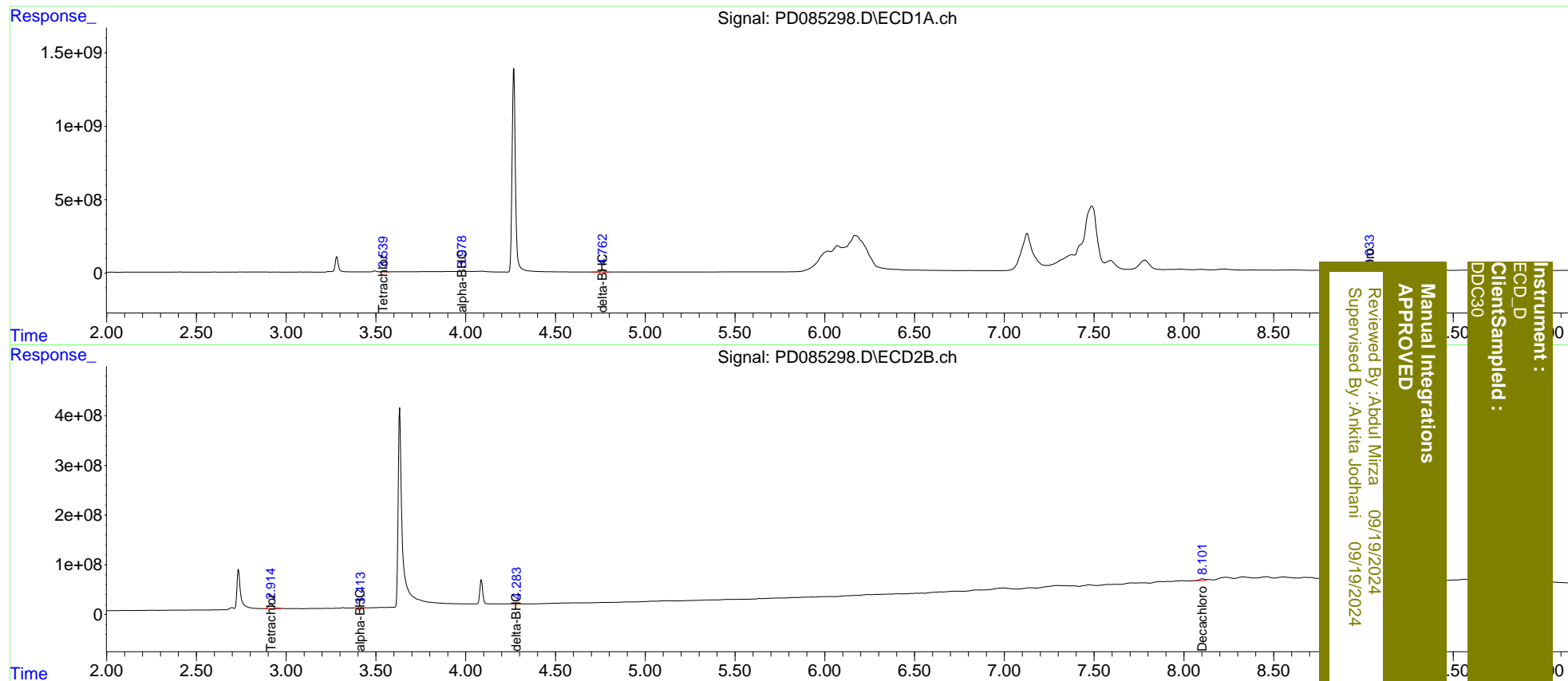
System Monitoring Compounds						
1) SA Tetrachlo...	3.539	2.915	22695139	170.1E6	22.439m	48.080 #
27) SA Decachlor...	9.033	8.101	25092699	70964492	19.213m	20.409m
Target Compounds						
2) A alpha-BHC	3.978	3.413	4779206	11070820	2.811m	2.183m
7) B delta-BHC	4.763	4.284	219.4E6	15546104	133.753	3.132 #

(f)=RT Delta > 1/2 Window (#)=Amounts differ by > 25% (m)=manual int.

Data Path : Z:\pestpcbsrv\HPCHEM1\ECD_D\Data\PD091724\
 Data File : PD085298.D
 Signal(s) : Signal #1: ECD1A.ch Signal #2: ECD2B.ch
 Acq On : 18 Sep 2024 05:42
 Operator : AR\AJ
 Sample : P3910-11
 Misc :
 ALS Vial : 59 Sample Multiplier: 1

Integration File signal 1: autoint1.e
 Integration File signal 2: autoint2.e
 Quant Time: Sep 18 07:26:24 2024
 Quant Method : Z:\pestpcbsrv\HPCHEM1\ECD_D\Method\PD082524CLP.M
 Quant Title : GC Extractables
 QLast Update : Tue Aug 27 02:47:48 2024
 Response via : Initial Calibration
 Integrator: ChemStation

Volume Inj. : 1 µl
 Signal #1 Phase : ZB-MR1 Signal #2 Phase: ZB-MR2
 Signal #1 Info : 30M x 0.32mm x0.5 Signal #2 Info : 30M x 0.32mm x 0.25µm



Instrument :
 ECD_D
 ClientSampled :
 DDC30
 Manual Integrations
 APPROVED
 Reviewed By :Abdul Mirza 09/19/2024
 Supervised By :Ankita Jodhani 09/19/2024