

Data Path : Z:\pestpcbsrv\HPCHEM1\ECD_D\Data\PD091724\
 Data File : PD085244.D
 Signal(s) : Signal #1: ECD1A.ch Signal #2: ECD2B.ch
 Acq On : 17 Sep 2024 16:08
 Operator : AR\AJ
 Sample : P3878-18DL2 40X
 Misc :
 ALS Vial : 15 Sample Multiplier: 1

Instrument :
 ECD_D
ClientSampleId :
 DDCC1DL2

Manual IntegrationsAPPROVED

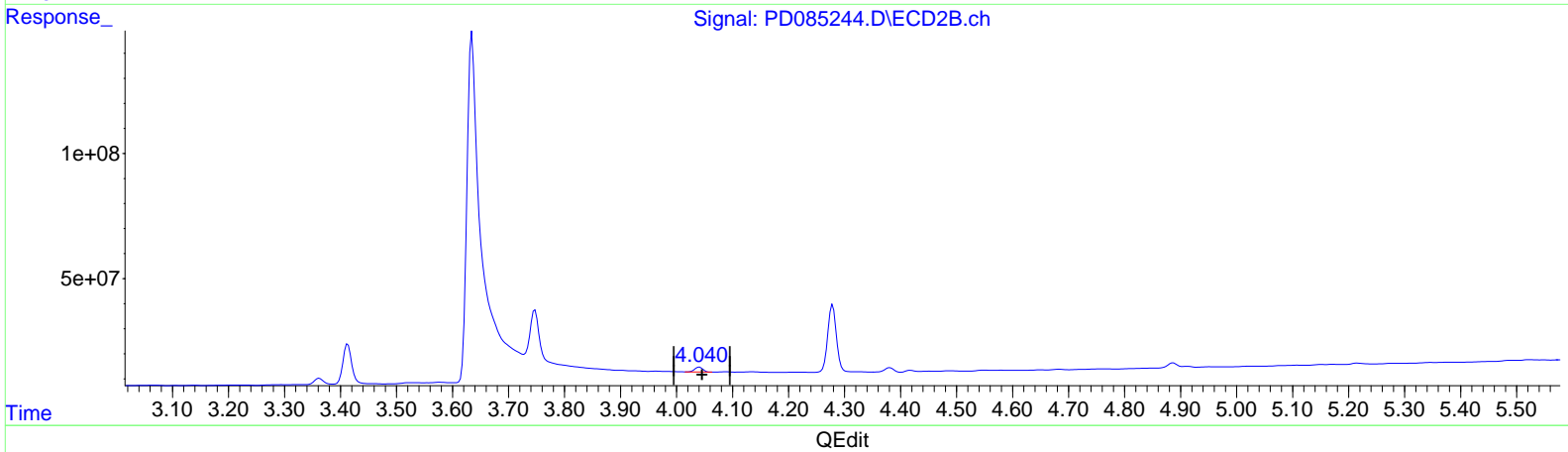
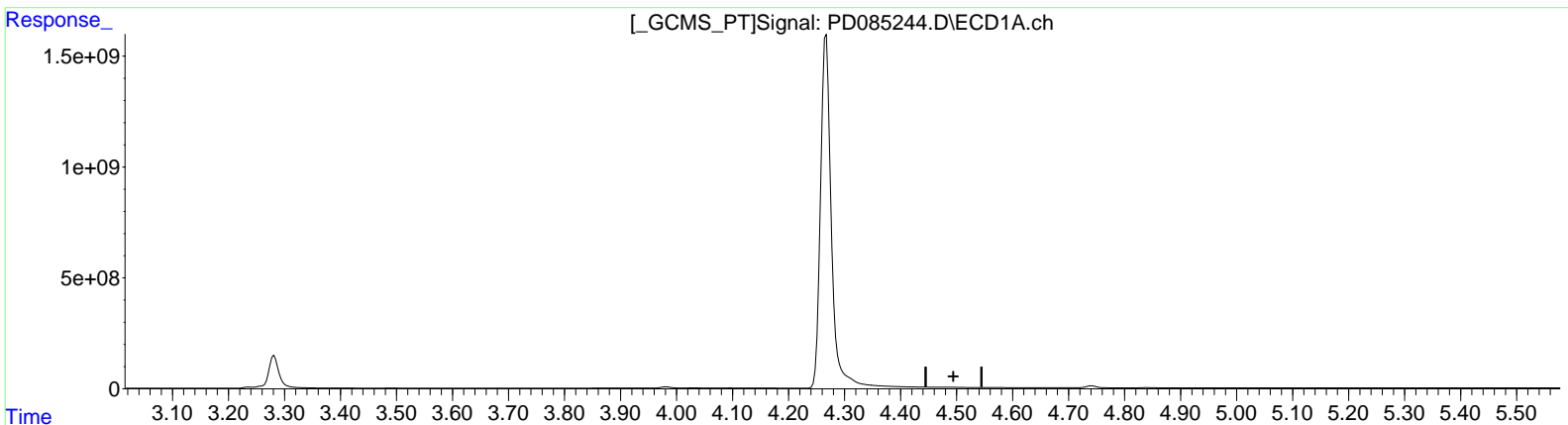
Reviewed By :Abdul
 Mirza

09/18/2024
 Supervised By :Ankita
 Jodhani

09/18/2024

Integration File signal 1: autoint1.e
 Integration File signal 2: autoint2.e
 Quant Time: Sep 17 23:23:10 2024
 Quant Method : Z:\pestpcbsrv\HPCHEM1\ECD_D\Method\PD082524CLP.M
 Quant Title : GC Extractables
 QLast Update : Tue Aug 27 02:47:48 2024
 Response via : Initial Calibration
 Integrator: ChemStation

Volume Inj. : 1 µl
 Signal #1 Phase : ZB-MR1 Signal #2 Phase: ZB-MR2
 Signal #1 Info : 30M x 0.32mm x0.5 Signal #2 Info : 30M x 0.32mm x 0.25µm



(6) beta-BHC (B)
 4.492min -8.356 ng/ml
 response -6069903

(6) beta-BHC #2 (B)
 4.041min 9.123 ng/ml
 response 19778078

Data Path : Z:\pestpcbsrv\HPCHEM1\ECD_D\Data\PD091724\
 Data File : PD085244.D
 Signal(s) : Signal #1: ECD1A.ch Signal #2: ECD2B.ch
 Acq On : 17 Sep 2024 16:08
 Operator : AR\AJ
 Sample : P3878-18DL2 40X
 Misc :
 ALS Vial : 15 Sample Multiplier: 1

Instrument :
 ECD_D
ClientSampleId :
 DDCC1DL2

Manual IntegrationsAPPROVED

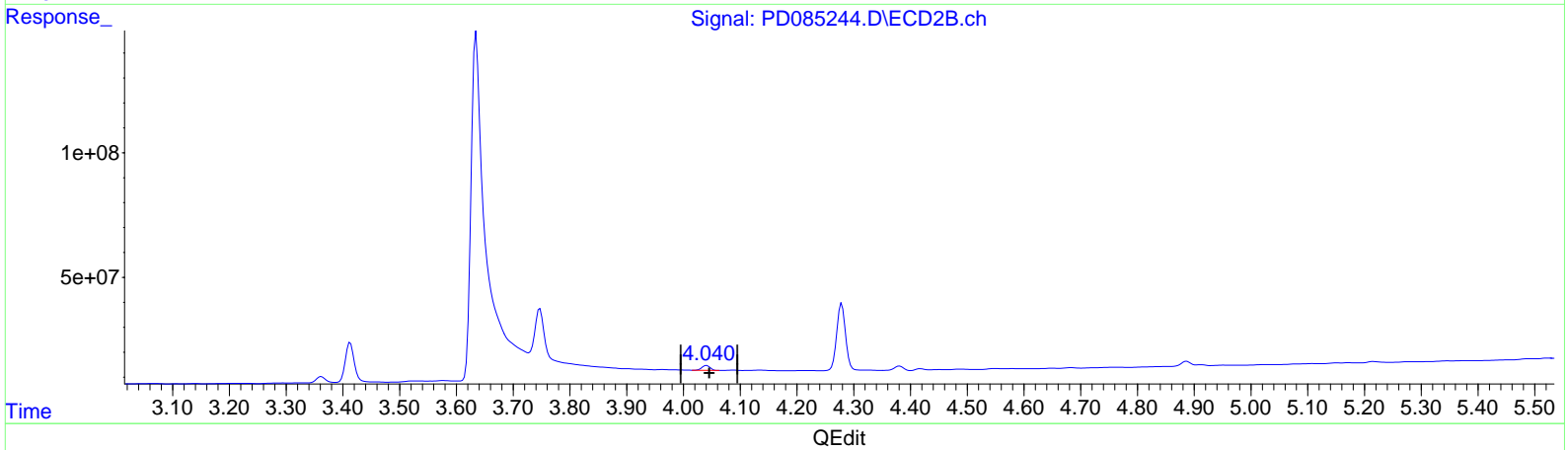
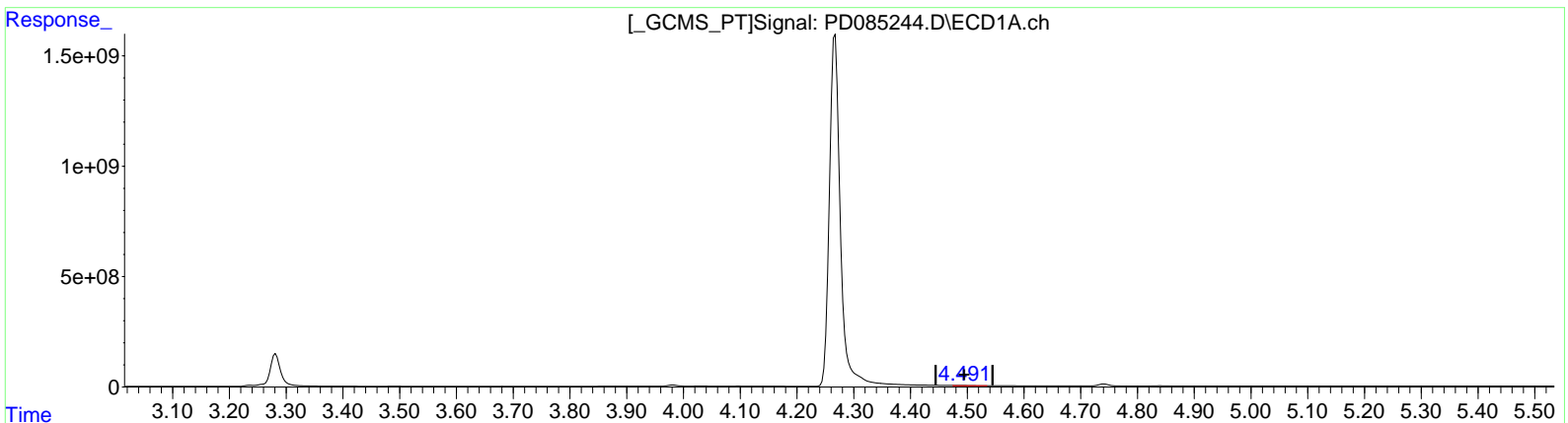
Integration File signal 1: autoint1.e
 Integration File signal 2: autoint2.e
 Quant Time: Sep 17 23:23:10 2024
 Quant Method : Z:\pestpcbsrv\HPCHEM1\ECD_D\Method\PD082524CLP.M
 Quant Title : GC Extractables
 QLast Update : Tue Aug 27 02:47:48 2024
 Response via : Initial Calibration
 Integrator: ChemStation

Reviewed By :Abdul
 Mirza

09/18/2024
 Supervised By :Ankita
 Jodhani

09/18/2024

Volume Inj. : 1 µl
 Signal #1 Phase : ZB-MR1 Signal #2 Phase: ZB-MR2
 Signal #1 Info : 30M x 0.32mm x0.5 Signal #2 Info : 30M x 0.32mm x 0.25µm



(6) beta-BHC (B)
 4.491min 35.173 ng/ml m
 response 25548341

(6) beta-BHC #2 (B)
 4.041min 9.123 ng/ml
 response 19778078

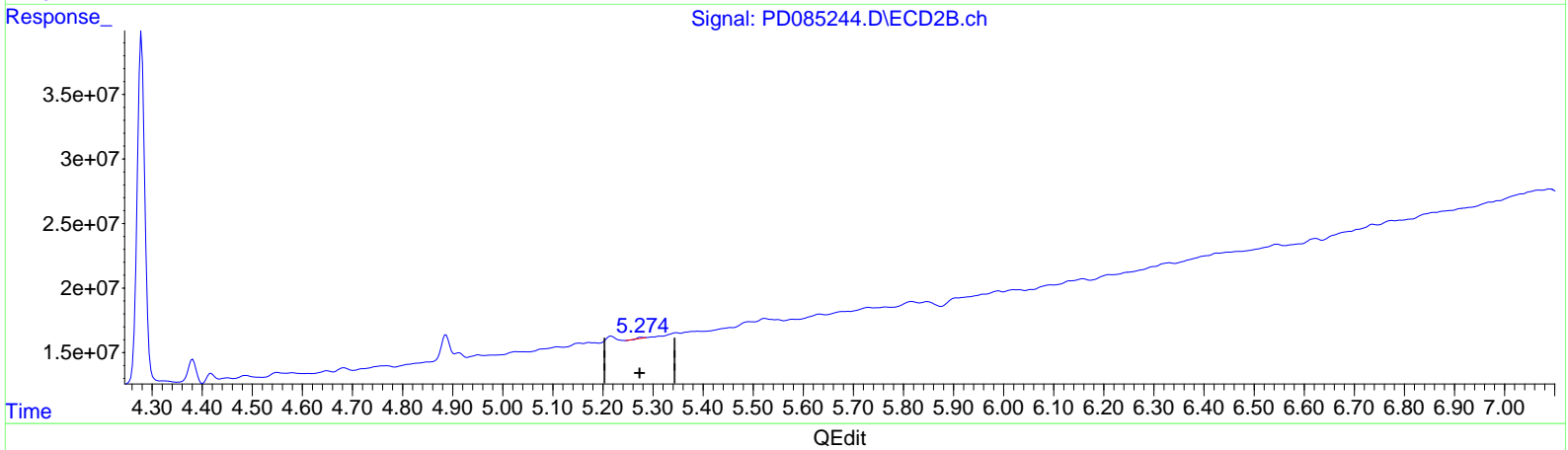
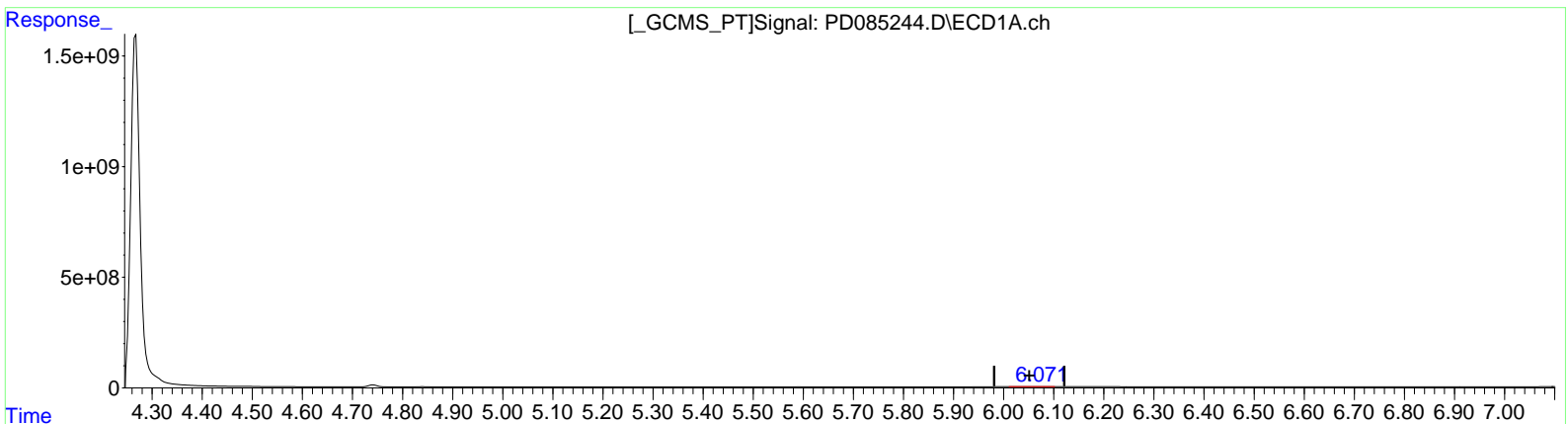
Data Path : Z:\pestpcbsrv\HPCHEM1\ECD_D\Data\PD091724\
Data File : PD085244.D
Signal(s) : Signal #1: ECD1A.ch Signal #2: ECD2B.ch
Acq On : 17 Sep 2024 16:08
Operator : AR\AJ
Sample : P3878-18DL2 40X
Misc :
ALS Vial : 15 Sample Multiplier: 1

Instrument :
ECD_D
ClientSampleId :
DDCC1DL2

Manual Integrations APPROVED
Reviewed By : Abdul
Mirza
09/18/2024
Supervised By : Ankita
Jodhani
09/18/2024

Integration File signal 1: autoint1.e
Integration File signal 2: autoint2.e
Quant Time: Sep 17 23:23:10 2024
Quant Method : Z:\pestpcbsrv\HPCHEM1\ECD_D\Method\PD082524CLP.M
Quant Title : GC Extractables
QLast Update : Tue Aug 27 02:47:48 2024
Response via : Initial Calibration
Integrator: ChemStation

Volume Inj. : 1 µl
Signal #1 Phase : ZB-MR1 Signal #2 Phase: ZB-MR2
Signal #1 Info : 30M x 0.32mm x 0.5 Signal #2 Info : 30M x 0.32mm x 0.25µm



(9) Endosulfan I (A)
6.072min 6.115 ng/ml
response 8412408

(9) Endosulfan I #2 (A)
5.276min 0.137 ng/ml
response 525039

Data Path : Z:\pestpcbsrv\HPCHEM1\ECD_D\Data\PD091724\
 Data File : PD085244.D
 Signal(s) : Signal #1: ECD1A.ch Signal #2: ECD2B.ch
 Acq On : 17 Sep 2024 16:08
 Operator : AR\AJ
 Sample : P3878-18DL2 40X
 Misc :
 ALS Vial : 15 Sample Multiplier: 1

Instrument :
 ECD_D
ClientSampleId :
 DDCC1DL2

Manual IntegrationsAPPROVED

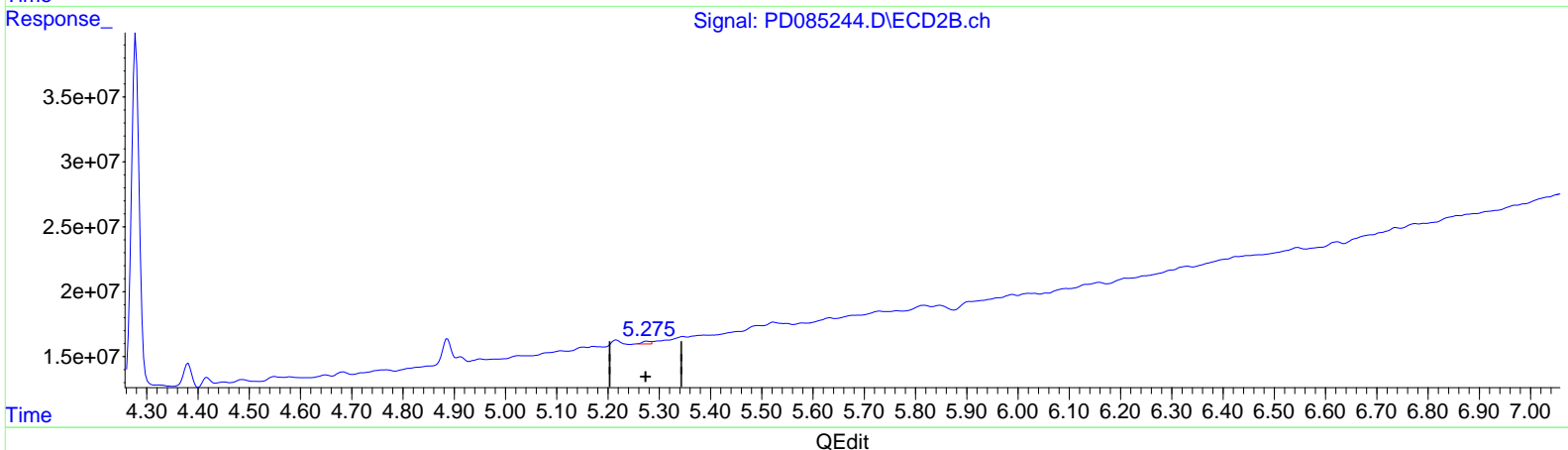
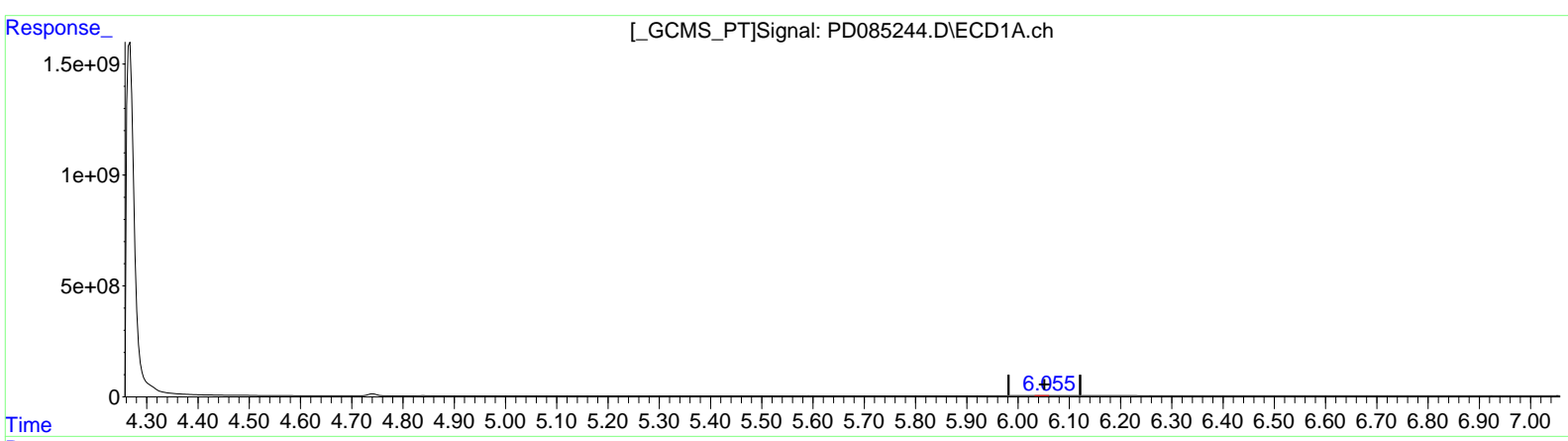
Reviewed By :Abdul
 Mirza

09/18/2024
 Supervised By :Ankita
 Jodhani

09/18/2024

Integration File signal 1: autoint1.e
 Integration File signal 2: autoint2.e
 Quant Time: Sep 17 23:23:10 2024
 Quant Method : Z:\pestpcbsrv\HPCHEM1\ECD_D\Method\PD082524CLP.M
 Quant Title : GC Extractables
 QLast Update : Tue Aug 27 02:47:48 2024
 Response via : Initial Calibration
 Integrator: ChemStation

Volume Inj. : 1 µl
 Signal #1 Phase : ZB-MR1 Signal #2 Phase: ZB-MR2
 Signal #1 Info : 30M x 0.32mm x0.5 Signal #2 Info : 30M x 0.32mm x 0.25µm



(9) Endosulfan I (A)
 6.055min 1.473 ng/ml m
 response 2026355

(9) Endosulfan I #2 (A)
 5.275min 0.620 ng/ml m
 response 2377039

Data Path : Z:\pestpcbsrv\HPCHEM1\ECD_D\Data\PD091724\
Data File : PD085244.D
Signal(s) : Signal #1: ECD1A.ch Signal #2: ECD2B.ch
Acq On : 17 Sep 2024 16:08
Operator : AR\AJ
Sample : P3878-18DL2 40X
Misc :
ALS Vial : 15 Sample Multiplier: 1

Instrument :

ECD_D

ClientSampleId :

DDCC1DL2

Manual IntegrationsAPPROVED

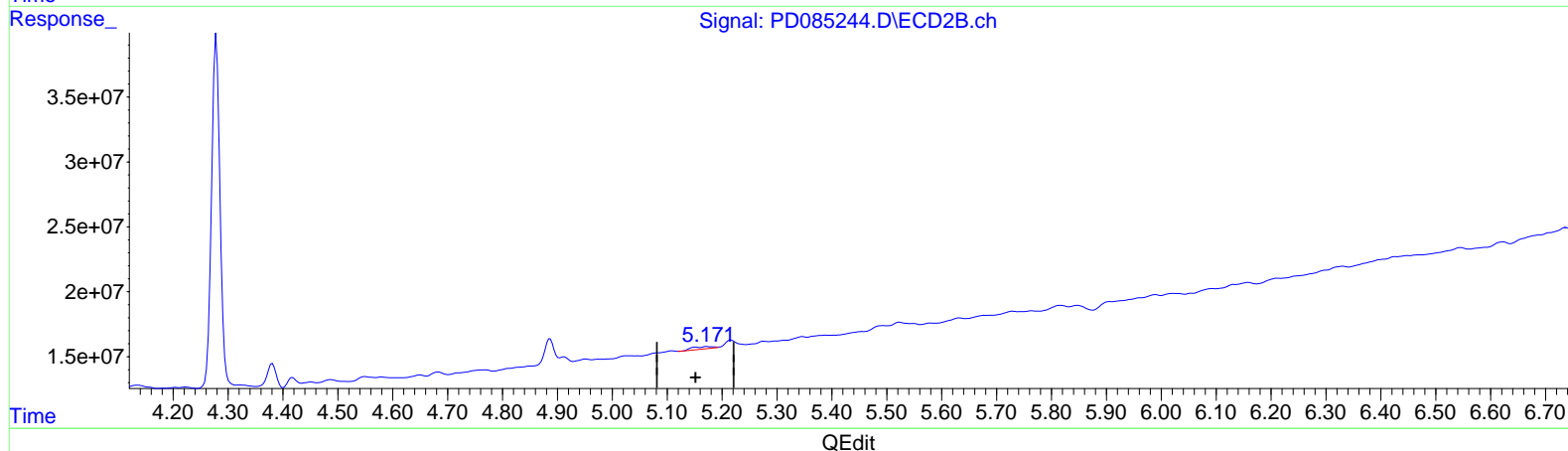
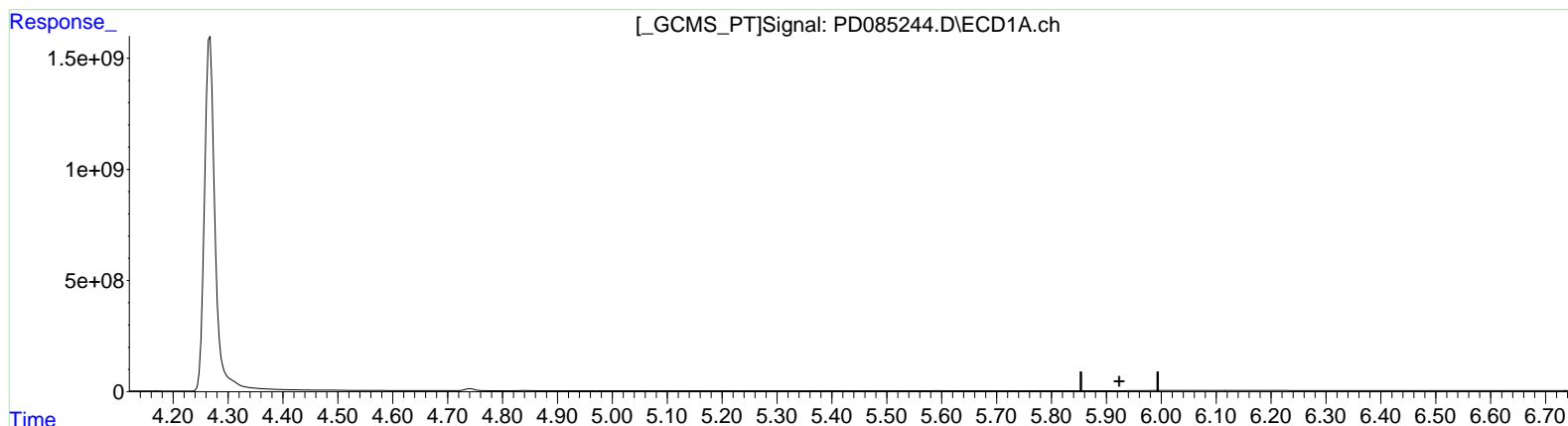
Reviewed By :Abdul
Mirza

09/18/2024
Supervised By :Ankita
Jodhani

09/18/2024

Integration File signal 1: autoint1.e
Integration File signal 2: autoint2.e
Quant Time: Sep 17 23:23:10 2024
Quant Method : Z:\pestpcbsrv\HPCHEM1\ECD_D\Method\PD082524CLP.M
Quant Title : GC Extractables
QLast Update : Tue Aug 27 02:47:48 2024
Response via : Initial Calibration
Integrator: ChemStation

Volume Inj. : 1 µl
Signal #1 Phase : ZB-MR1 Signal #2 Phase: ZB-MR2
Signal #1 Info : 30M x 0.32mm x0.5 Signal #2 Info : 30M x 0.32mm x 0.25µm



(10) trans-Chlordane (B)
0.000min 0.000 ng/ml
response 0

(10) trans-Chlordane #2 (B)
5.172min 1.135 ng/ml
response 4669377

Data Path : Z:\pestpcbsrv\HPCHEM1\ECD_D\Data\PD091724\
 Data File : PD085244.D
 Signal(s) : Signal #1: ECD1A.ch Signal #2: ECD2B.ch
 Acq On : 17 Sep 2024 16:08
 Operator : AR\AJ
 Sample : P3878-18DL2 40X
 Misc :
 ALS Vial : 15 Sample Multiplier: 1

Instrument :
 ECD_D
ClientSampleId :
 DDCC1DL2

Manual IntegrationsAPPROVED

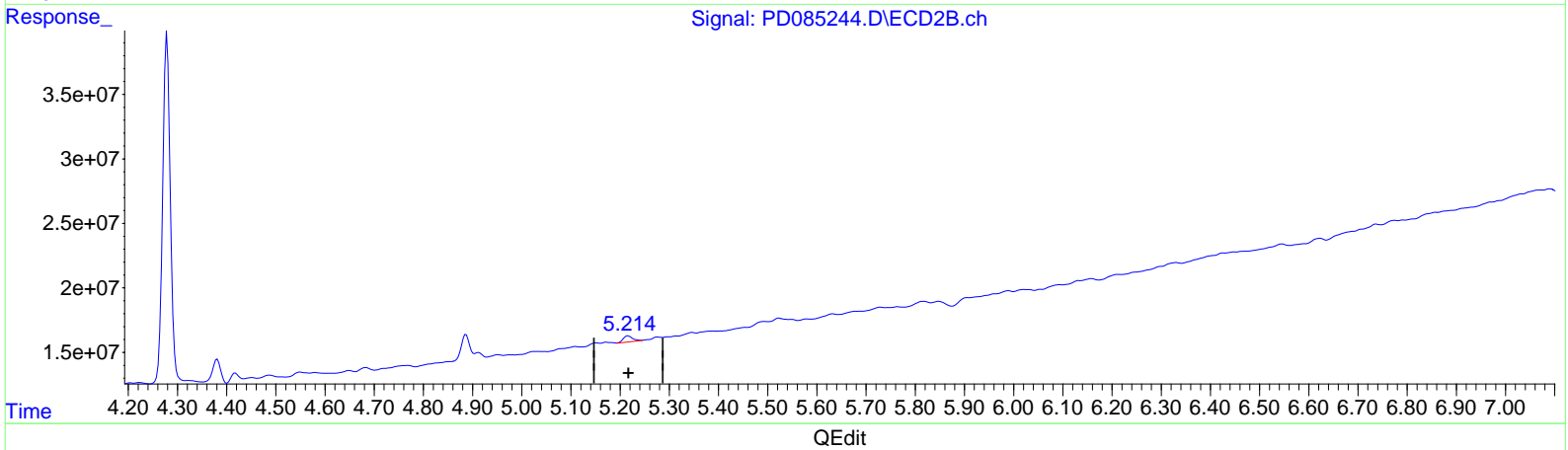
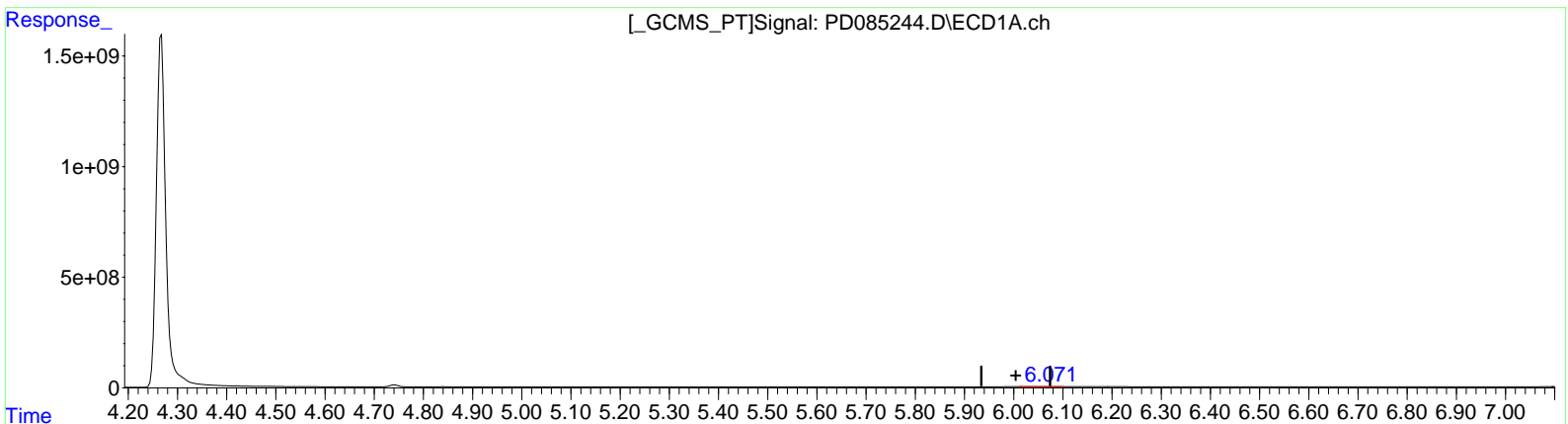
Integration File signal 1: autoint1.e
 Integration File signal 2: autoint2.e
 Quant Time: Sep 17 23:23:10 2024
 Quant Method : Z:\pestpcbsrv\HPCHEM1\ECD_D\Method\PD082524CLP.M
 Quant Title : GC Extractables
 QLast Update : Tue Aug 27 02:47:48 2024
 Response via : Initial Calibration
 Integrator: ChemStation

Reviewed By :Abdul
 Mirza

09/18/2024
 Supervised By :Ankita
 Jodhani

09/18/2024

Volume Inj. : 1 µl
 Signal #1 Phase : ZB-MR1 Signal #2 Phase: ZB-MR2
 Signal #1 Info : 30M x 0.32mm x0.5 Signal #2 Info : 30M x 0.32mm x 0.25µm



(11) cis-Chlordane (B)
 6.072min 5.690 ng/ml
 response 8412408

(11) cis-Chlordane #2 (B)
 5.216min 1.491 ng/ml
 response 6256913

Data Path : Z:\pestpcbsrv\HPCHEM1\ECD_D\Data\PD091724\
 Data File : PD085244.D
 Signal(s) : Signal #1: ECD1A.ch Signal #2: ECD2B.ch
 Acq On : 17 Sep 2024 16:08
 Operator : AR\AJ
 Sample : P3878-18DL2 40X
 Misc :
 ALS Vial : 15 Sample Multiplier: 1

Instrument :

ECD_D

ClientSampleId :

DDCC1DL2

Manual IntegrationsAPPROVED

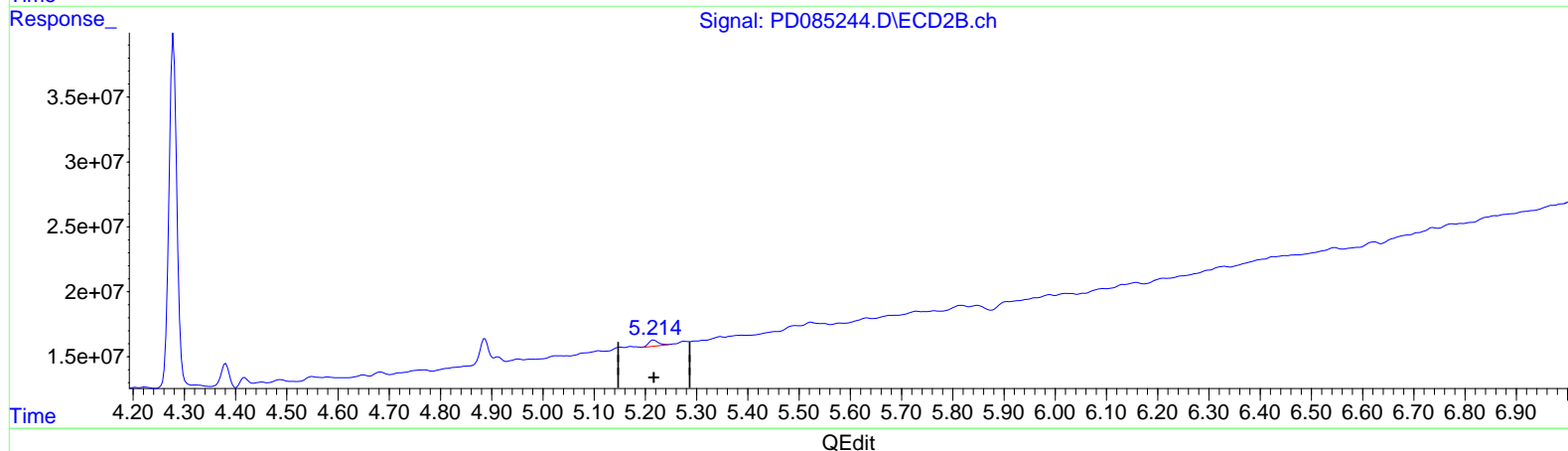
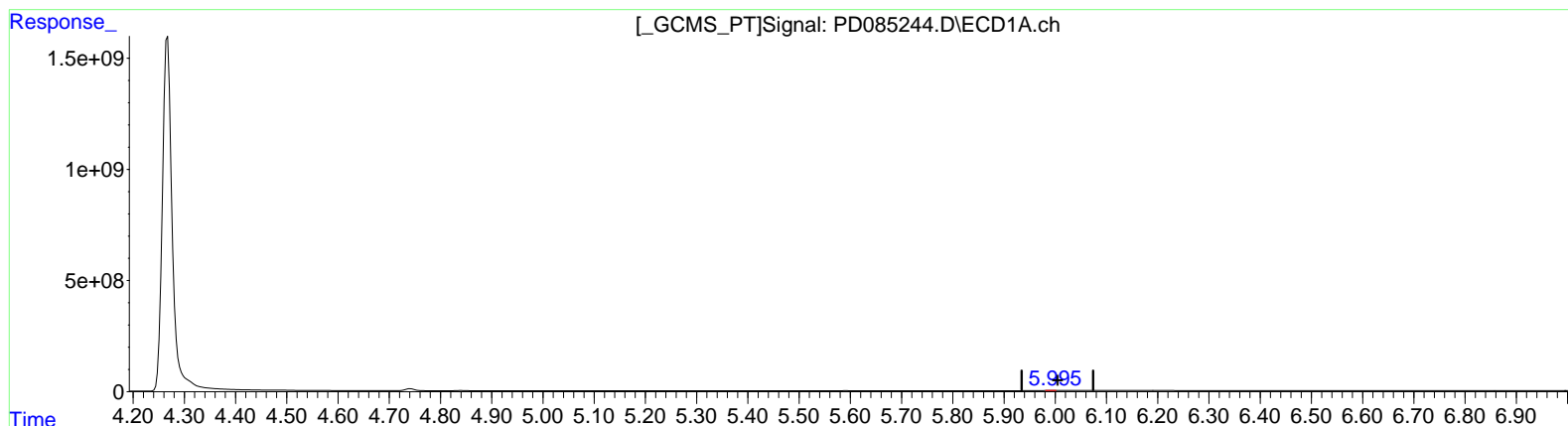
Reviewed By :Abdul
 Mirza

09/18/2024
 Supervised By :Ankita
 Jodhani

09/18/2024

Integration File signal 1: autoint1.e
 Integration File signal 2: autoint2.e
 Quant Time: Sep 17 23:23:10 2024
 Quant Method : Z:\pestpcbsrv\HPCHEM1\ECD_D\Method\PD082524CLP.M
 Quant Title : GC Extractables
 QLast Update : Tue Aug 27 02:47:48 2024
 Response via : Initial Calibration
 Integrator: ChemStation

Volume Inj. : 1 µl
 Signal #1 Phase : ZB-MR1 Signal #2 Phase: ZB-MR2
 Signal #1 Info : 30M x 0.32mm x0.5 Signal #2 Info : 30M x 0.32mm x 0.25µm



(11) cis-Chlordane (B)
 5.995min 1.126 ng/ml m
 response 1664649

(11) cis-Chlordane #2 (B)
 5.216min 1.491 ng/ml
 response 6256913

Data Path : Z:\pestpcbsrv\HPCHEM1\ECD_D\Data\PD091724\
Data File : PD085244.D
Signal(s) : Signal #1: ECD1A.ch Signal #2: ECD2B.ch
Acq On : 17 Sep 2024 16:08
Operator : AR\AJ
Sample : P3878-18DL2 40X
Misc :
ALS Vial : 15 Sample Multiplier: 1

Instrument :

ECD_D

ClientSampleId :

DDCC1DL2

Manual IntegrationsAPPROVED

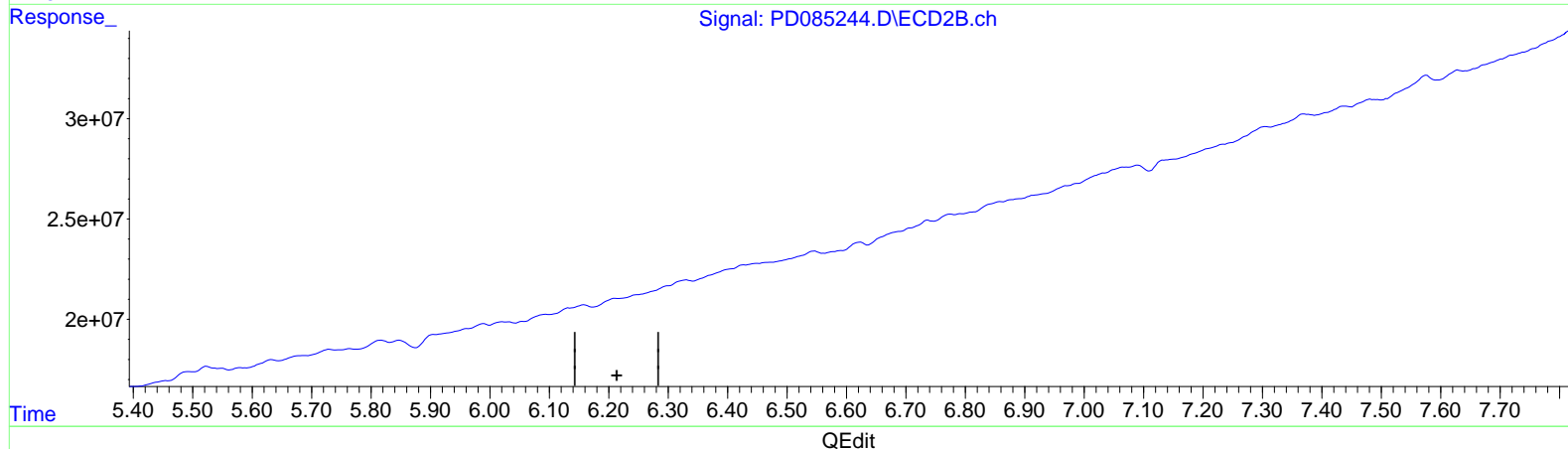
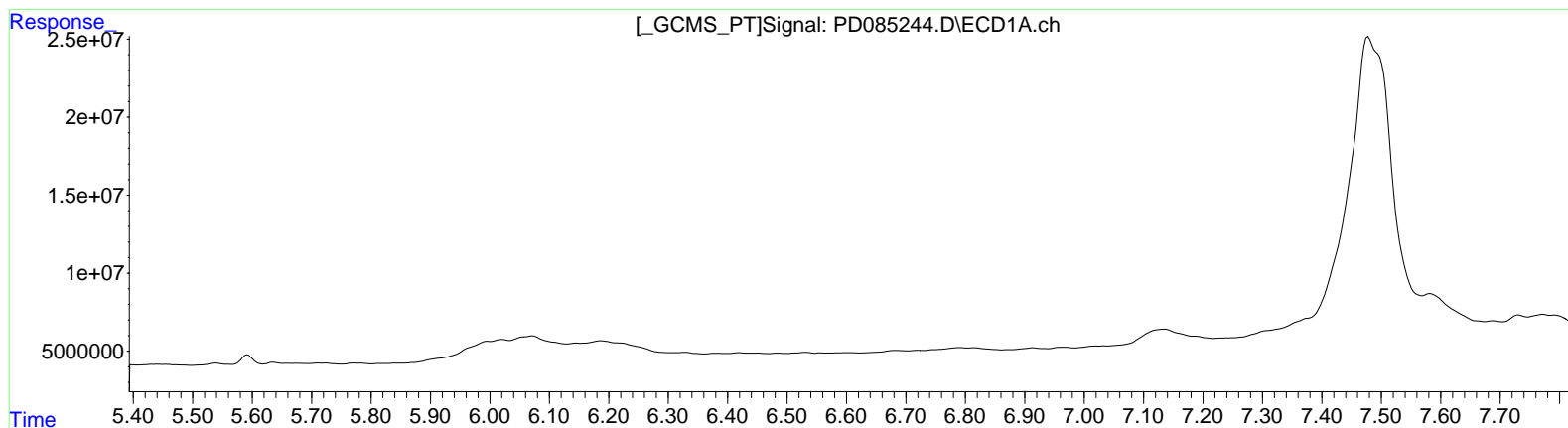
Reviewed By :Abdul
Mirza

09/18/2024
Supervised By :Ankita
Jodhani

09/18/2024

Integration File signal 1: autoint1.e
Integration File signal 2: autoint2.e
Quant Time: Sep 17 23:23:10 2024
Quant Method : Z:\pestpcbsrv\HPCHEM1\ECD_D\Method\PD082524CLP.M
Quant Title : GC Extractables
QLast Update : Tue Aug 27 02:47:48 2024
Response via : Initial Calibration
Integrator: ChemStation

Volume Inj. : 1 µl
Signal #1 Phase : ZB-MR1 Signal #2 Phase: ZB-MR2
Signal #1 Info : 30M x 0.32mm x0.5 Signal #2 Info : 30M x 0.32mm x 0.25µm



(17) 4,4'-DDT (MA)
0.000min 0.000 ng/ml d
response 0

(17) 4,4'-DDT #2 (MA)
0.000min 0.000 ng/ml d
response 0

Data Path : Z:\pestpcbsrv\HPCHEM1\ECD_D\Data\PD091724\
Data File : PD085244.D
Signal(s) : Signal #1: ECD1A.ch Signal #2: ECD2B.ch
Acq On : 17 Sep 2024 16:08
Operator : AR\AJ
Sample : P3878-18DL2 40X
Misc :
ALS Vial : 15 Sample Multiplier: 1

Instrument :

ECD_D

ClientSampleId :

DDCC1DL2

Manual IntegrationsAPPROVED

Reviewed By :Abdul
Mirza

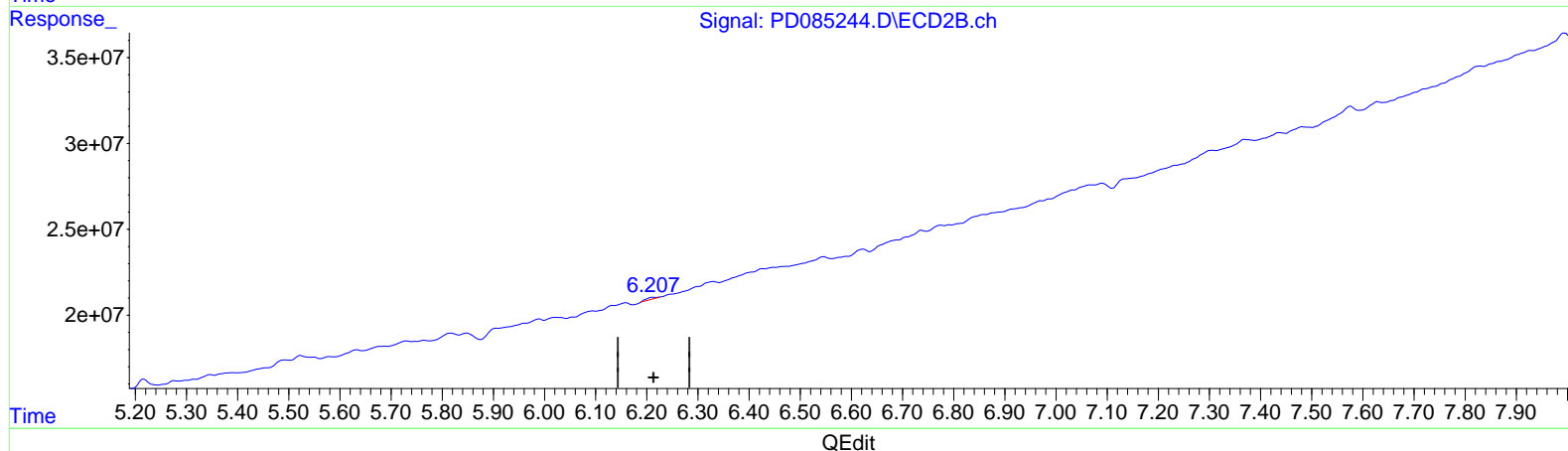
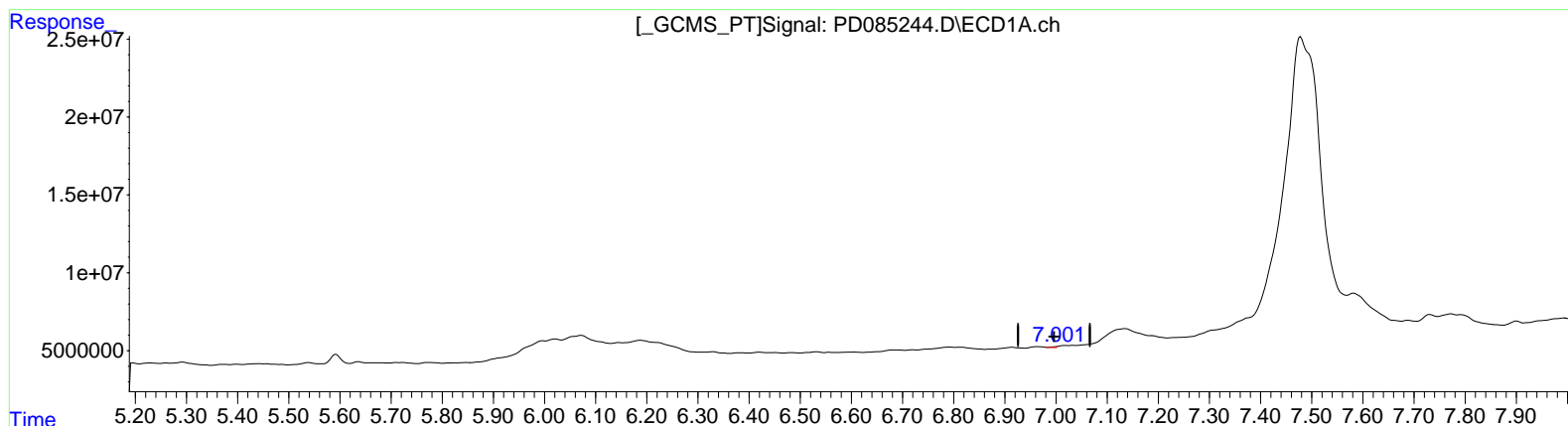
09/18/2024

Supervised By :Ankita
Jodhani

09/18/2024

Integration File signal 1: autoint1.e
Integration File signal 2: autoint2.e
Quant Time: Sep 17 23:23:10 2024
Quant Method : Z:\pestpcbsrv\HPCHEM1\ECD_D\Method\PD082524CLP.M
Quant Title : GC Extractables
QLast Update : Tue Aug 27 02:47:48 2024
Response via : Initial Calibration
Integrator: ChemStation

Volume Inj. : 1 µl
Signal #1 Phase : ZB-MR1 Signal #2 Phase: ZB-MR2
Signal #1 Info : 30M x 0.32mm x0.5 Signal #2 Info : 30M x 0.32mm x 0.25µm



(17) 4,4'-DDT (MA)
7.001min 0.462 ng/ml m
response 413940

(17) 4,4'-DDT #2 (MA)
6.207min 0.494 ng/ml m
response 1581458