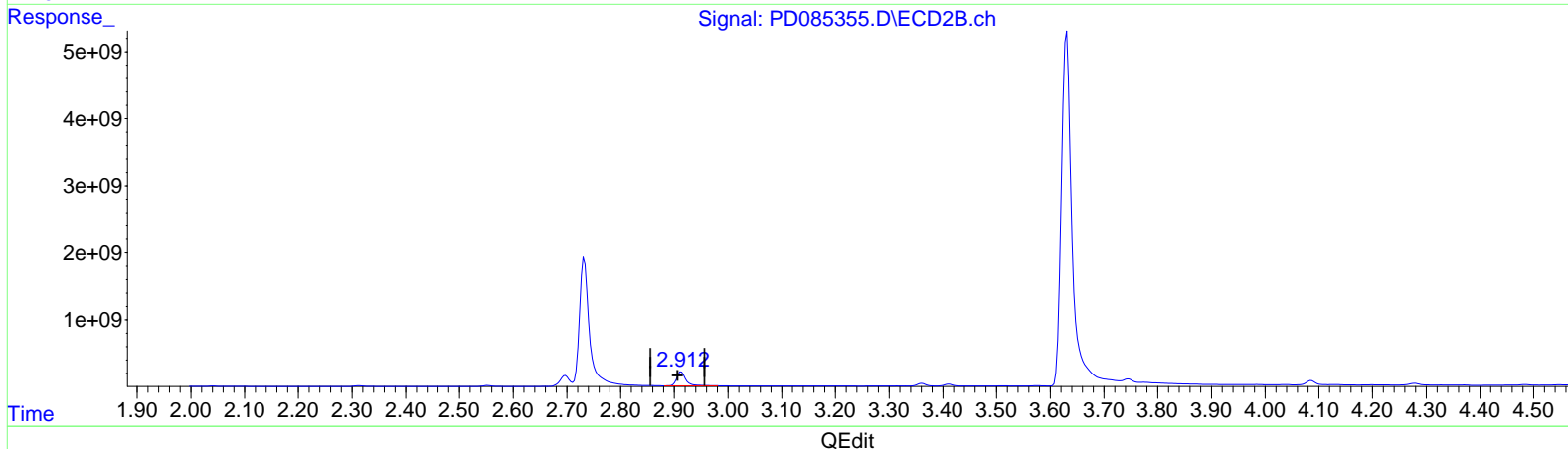
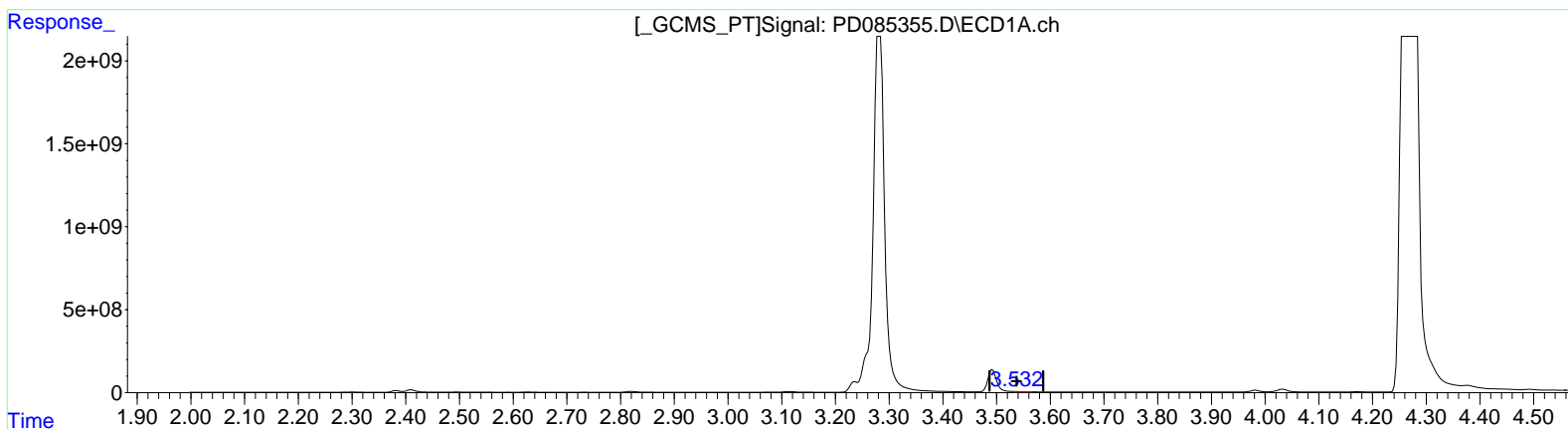


Data Path : Z:\pestpcbsrv\HPCHEM1\ECD\_D\Data\PD091824\  
 Data File : PD085355.D  
 Signal(s) : Signal #1: ECD1A.ch Signal #2: ECD2B.ch  
 Acq On : 19 Sep 2024 00:44  
 Operator : AR\AJ  
 Sample : P4016-05  
 Misc :  
 ALS Vial : 38 Sample Multiplier: 1

Integration File signal 1: autoint1.e  
 Integration File signal 2: autoint2.e  
 Quant Time: Sep 19 02:58:34 2024  
 Quant Method : Z:\pestpcbsrv\HPCHEM1\ECD\_D\Method\PD082524CLP.M  
 Quant Title : GC Extractables  
 QLast Update : Tue Aug 27 02:47:48 2024  
 Response via : Initial Calibration  
 Integrator: ChemStation

Volume Inj. : 1 µl  
 Signal #1 Phase : ZB-MR1 Signal #2 Phase: ZB-MR2  
 Signal #1 Info : 30M x 0.32mm x0.5 Signal #2 Info : 30M x 0.32mm x 0.25µm



(1) Tetrachloro-m-xylene (SA)

3.532min 21.376 ng/ml m

response 21620025

(1) Tetrachloro-m-xylene #2 (SA)

2.912min 697.624 ng/ml m

response 2468759791