

Data Path : Z:\pestpcbsrv\HPCHEM1\ECD_D\Data\PD091824\
 Data File : PD085323.D
 Signal(s) : Signal #1: ECD1A.ch Signal #2: ECD2B.ch
 Acq On : 18 Sep 2024 17:37
 Operator : AR\AJ
 Sample : INDA329
 Misc :
 ALS Vial : 99 Sample Multiplier: 1

Integration File signal 1: autoint1.e
 Integration File signal 2: autoint2.e
 Quant Time: Sep 18 22:31:13 2024
 Quant Method : Z:\pestpcbsrv\HPCHEM1\ECD_D\Method\PD082524CLP.M
 Quant Title : GC Extractables
 QLast Update : Tue Aug 27 02:47:48 2024
 Response via : Initial Calibration
 Integrator: ChemStation

Volume Inj. : 1 µl
 Signal #1 Phase : ZB-MR1 Signal #2 Phase: ZB-MR2
 Signal #1 Info : 30M x 0.32mm x0.5 Signal #2 Info : 30M x 0.32mm x 0.25µm

Compound	RT#1	RT#2	Resp#1	Resp#2	ng/ml	ng/ml

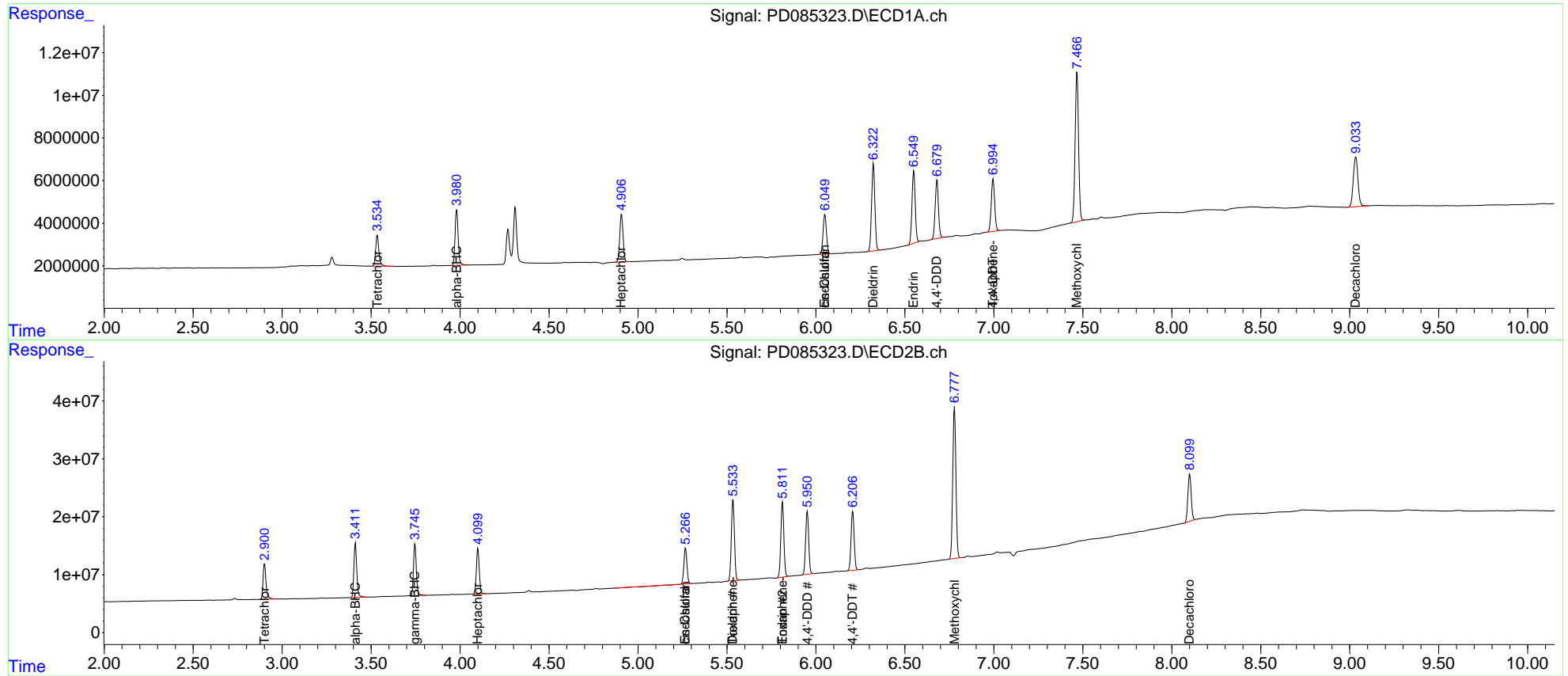
System Monitoring Compounds						
1) SA Tetrachlo...	3.535	2.901	18601063	71312961	18.391	20.152
2) SA Decachlor...	9.034	8.101	42842683	104.8E6	32.804	30.141
Target Compounds						
2) A alpha-BHC	3.981	3.412	31476771	104.3E6	18.514	20.574
3) MA gamma-BHC...	4.310	3.747	-6940228	98868305	N.D.	20.403
4) MA Heptachlor	4.908	4.100	28991315	89896451	18.843	21.117
9) A Endosulfan I	6.051	5.267	24425722	68310443	17.754	17.820
11) B cis-Chlor...	6.051f	5.267f	24425722	68310443	16.520	16.281
13) MA Dieldrin	6.323	5.534	52442896	168.6E6	35.552	39.246
14) MA Endrin	6.550	5.812	42931286	153.8E6	38.048	41.550
16) A 4,4'-DDD	6.681	5.952	35350889	130.1E6	35.804	38.332
17) MA 4,4'-DDT	6.996	6.207	32556211	123.0E6	36.370	38.460
20) A Methoxychlor	7.467	6.779	94043156	320.4E6	180.535	193.656
23) Toxaphene-2	0.000	5.534	0	168.6E6	N.D.	6821.473
24) Toxaphene-3	6.996f	5.812f	32556211	153.8E6	950.226	6519.305 #

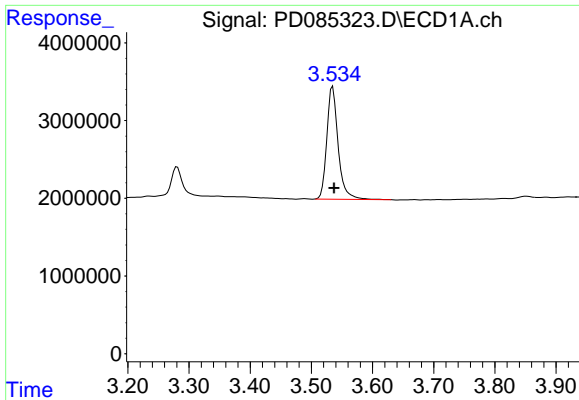
(f)=RT Delta > 1/2 Window (#)=Amounts differ by > 25% (m)=manual int.

Data Path : Z:\pestpcbsrv\HPCHEM1\ECD_D\Data\PD091824\
 Data File : PD085323.D
 Signal(s) : Signal #1: ECD1A.ch Signal #2: ECD2B.ch
 Acq On : 18 Sep 2024 17:37
 Operator : AR\AJ
 Sample : INDA329
 Misc :
 ALS Vial : 99 Sample Multiplier: 1

Integration File signal 1: autoint1.e
 Integration File signal 2: autoint2.e
 Quant Time: Sep 18 22:31:13 2024
 Quant Method : Z:\pestpcbsrv\HPCHEM1\ECD_D\Method\PD082524CLP.M
 Quant Title : GC Extractables
 QLast Update : Tue Aug 27 02:47:48 2024
 Response via : Initial Calibration
 Integrator: ChemStation

Volume Inj. : 1 µl
 Signal #1 Phase : ZB-MR1 Signal #2 Phase: ZB-MR2
 Signal #1 Info : 30M x 0.32mm x0.5 Signal #2 Info : 30M x 0.32mm x 0.25µm





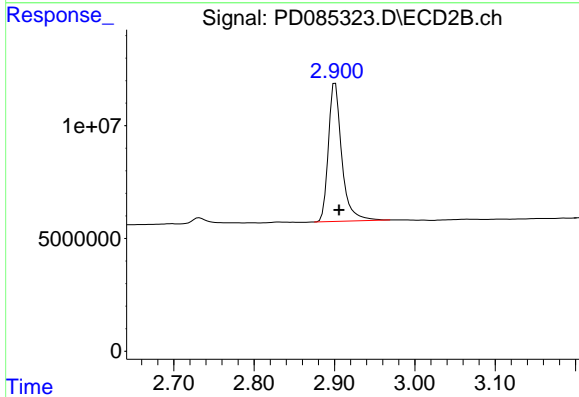
#1 Tetrachloro-m-xylene

R.T.: 3.535 min

Delta R.T.: -0.002 min

Response: 18601063

Conc: 18.39 ng/ml



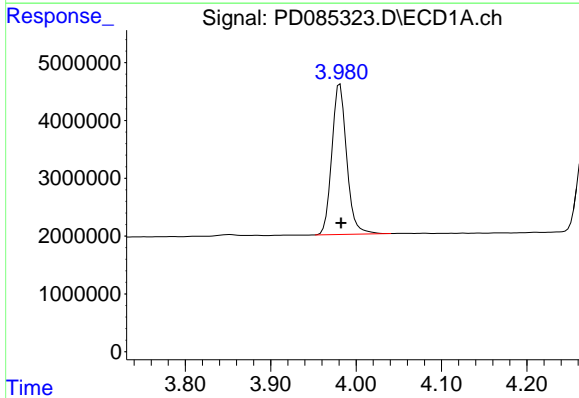
#1 Tetrachloro-m-xylene

R.T.: 2.901 min

Delta R.T.: -0.005 min

Response: 71312961

Conc: 20.15 ng/ml



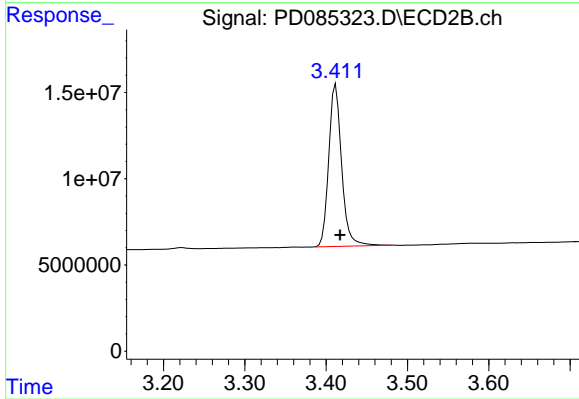
#2 alpha-BHC

R.T.: 3.981 min

Delta R.T.: -0.001 min

Response: 31476771

Conc: 18.51 ng/ml



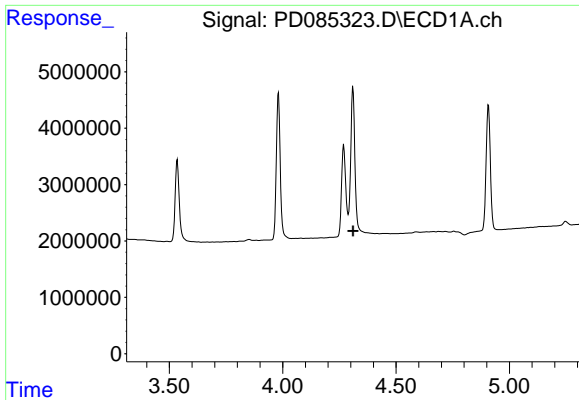
#2 alpha-BHC

R.T.: 3.412 min

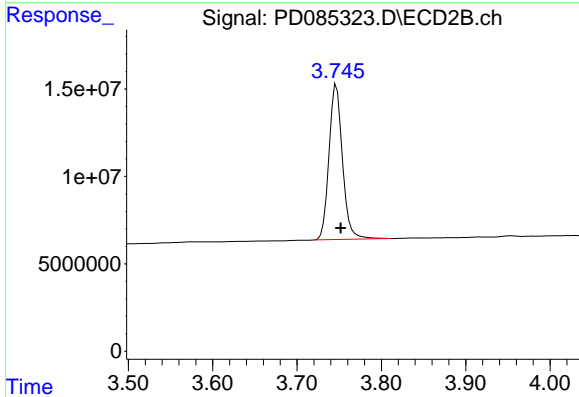
Delta R.T.: -0.005 min

Response: 104313768

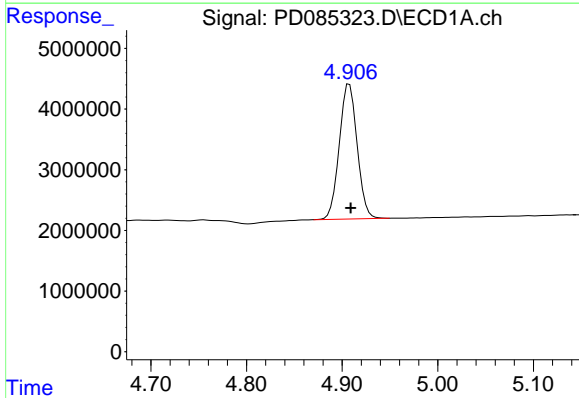
Conc: 20.57 ng/ml



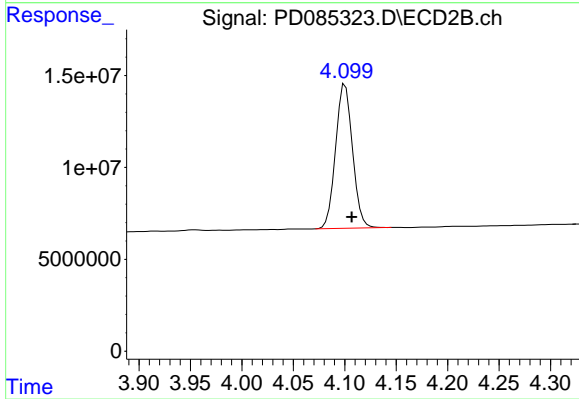
#3 gamma-BHC (Lindane)
 R.T.: 4.310 min
 Delta R.T.: -0.001 min
 Response: -6940228
 Conc: N.D.



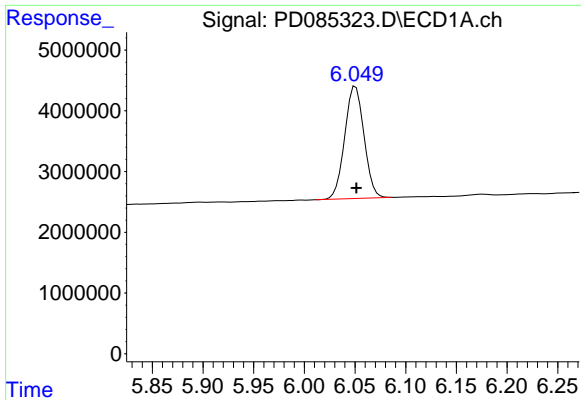
#3 gamma-BHC (Lindane)
 R.T.: 3.747 min
 Delta R.T.: -0.005 min
 Response: 98868305
 Conc: 20.40 ng/ml



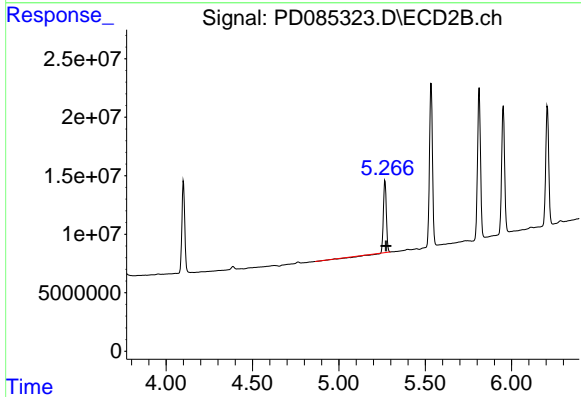
#4 Heptachlor
 R.T.: 4.908 min
 Delta R.T.: -0.001 min
 Response: 28991315
 Conc: 18.84 ng/ml



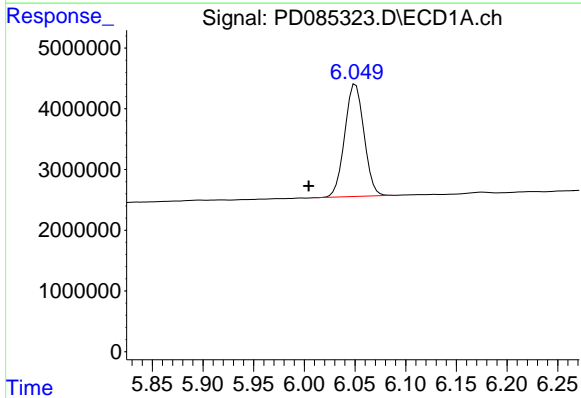
#4 Heptachlor
 R.T.: 4.100 min
 Delta R.T.: -0.006 min
 Response: 89896451
 Conc: 21.12 ng/ml



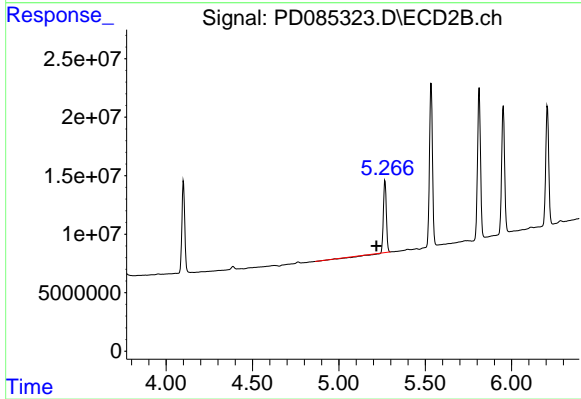
#9 Endosulfan I
R.T.: 6.051 min
Delta R.T.: 0.000 min
Response: 24425722
Conc: 17.75 ng/ml



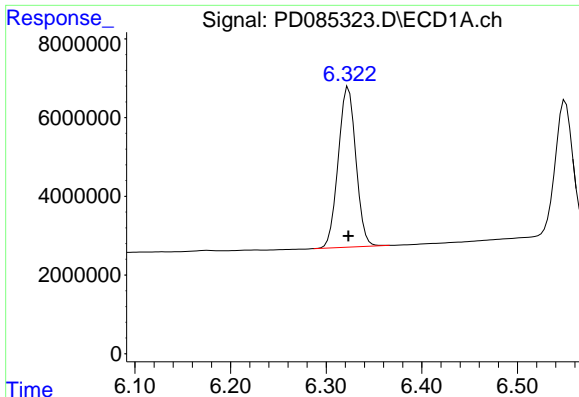
#9 Endosulfan I
R.T.: 5.267 min
Delta R.T.: -0.006 min
Response: 68310443
Conc: 17.82 ng/ml



#11 cis-Chlordane
R.T.: 6.051 min
Delta R.T.: 0.046 min
Response: 24425722
Conc: 16.52 ng/ml

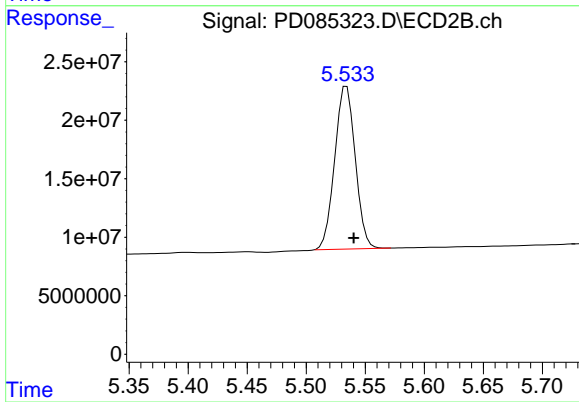


#11 cis-Chlordane
R.T.: 5.267 min
Delta R.T.: 0.051 min
Response: 68310443
Conc: 16.28 ng/ml



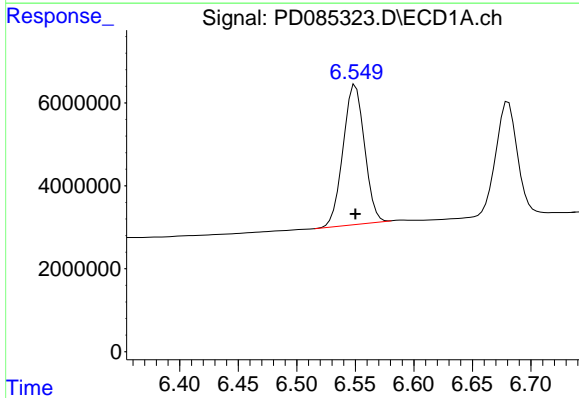
#13 Dieldrin

R.T.: 6.323 min
Delta R.T.: 0.000 min
Response: 52442896
Conc: 35.55 ng/ml



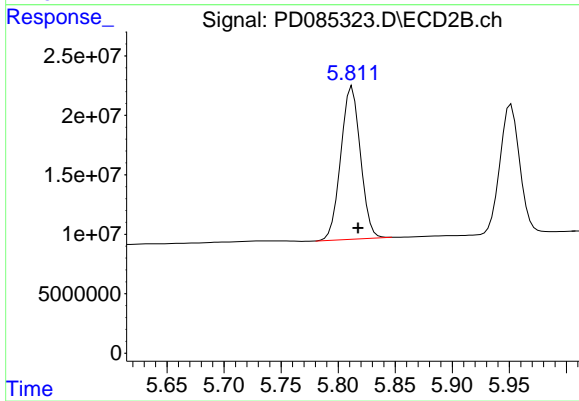
#13 Dieldrin

R.T.: 5.534 min
Delta R.T.: -0.006 min
Response: 168604908
Conc: 39.25 ng/ml



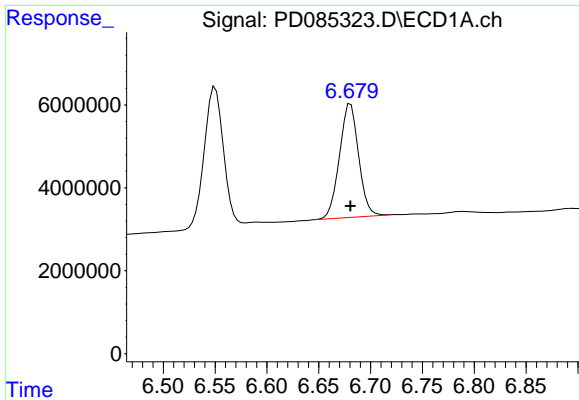
#14 Endrin

R.T.: 6.550 min
Delta R.T.: 0.000 min
Response: 42931286
Conc: 38.05 ng/ml



#14 Endrin

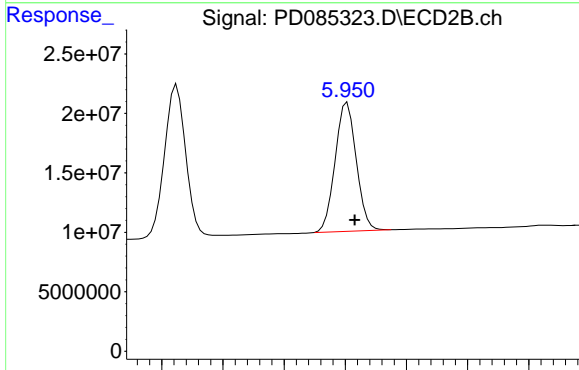
R.T.: 5.812 min
Delta R.T.: -0.005 min
Response: 153831901
Conc: 41.55 ng/ml



#16 4,4'-DDD

R.T.: 6.681 min
Delta R.T.: 0.000 min
Response: 35350889
Conc: 35.80 ng/ml

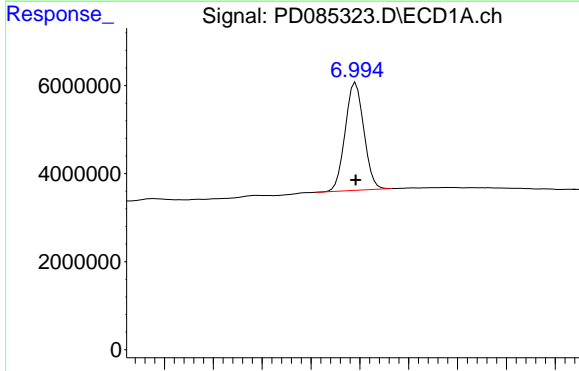
Time



#16 4,4'-DDD

R.T.: 5.952 min
Delta R.T.: -0.006 min
Response: 130083316
Conc: 38.33 ng/ml

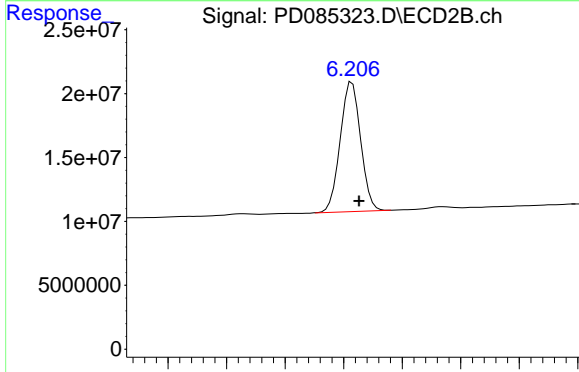
Time



#17 4,4'-DDT

R.T.: 6.996 min
Delta R.T.: 0.000 min
Response: 32556211
Conc: 36.37 ng/ml

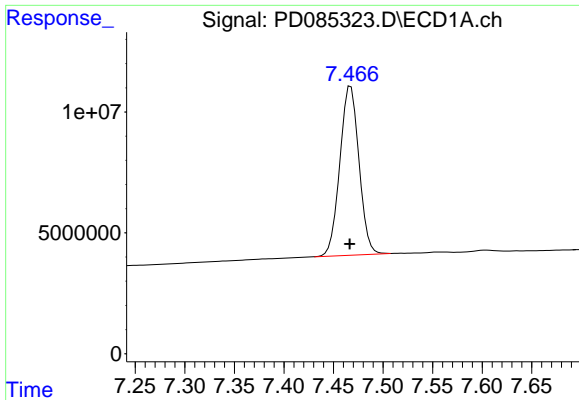
Time



#17 4,4'-DDT

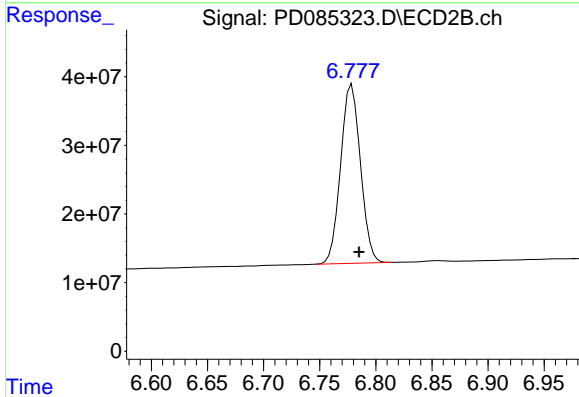
R.T.: 6.207 min
Delta R.T.: -0.006 min
Response: 123029292
Conc: 38.46 ng/ml

Time



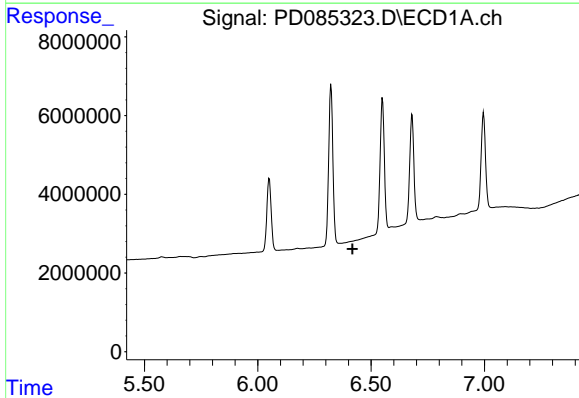
#20 Methoxychlor

R.T.: 7.467 min
 Delta R.T.: 0.001 min
 Response: 94043156
 Conc: 180.53 ng/ml



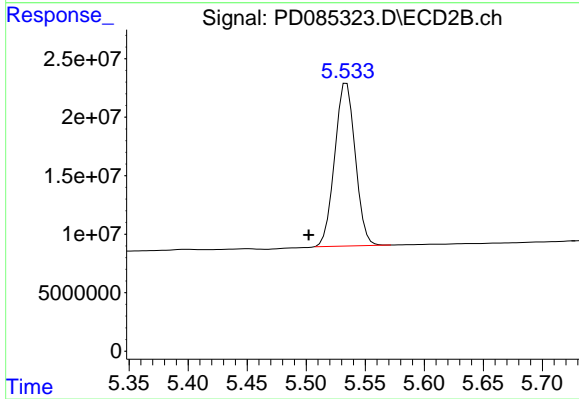
#20 Methoxychlor

R.T.: 6.779 min
 Delta R.T.: -0.006 min
 Response: 320357791
 Conc: 193.66 ng/ml



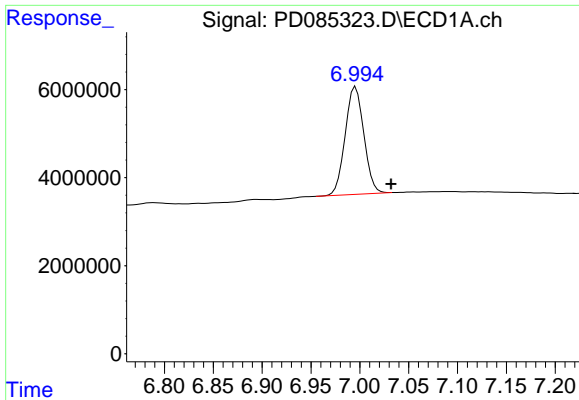
#23 Toxaphene-2

R.T.: 0.000 min
 Exp R.T. : 6.419 min
 Response: 0
 Conc: N.D.

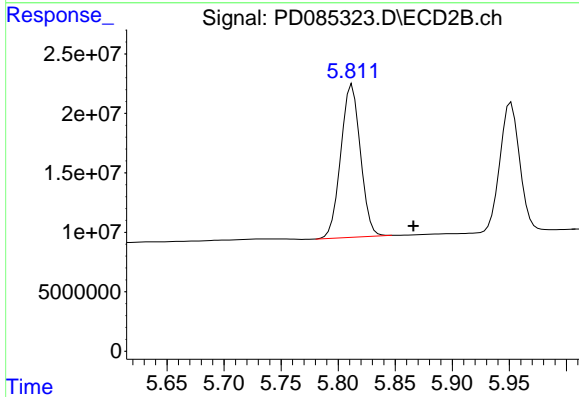


#23 Toxaphene-2

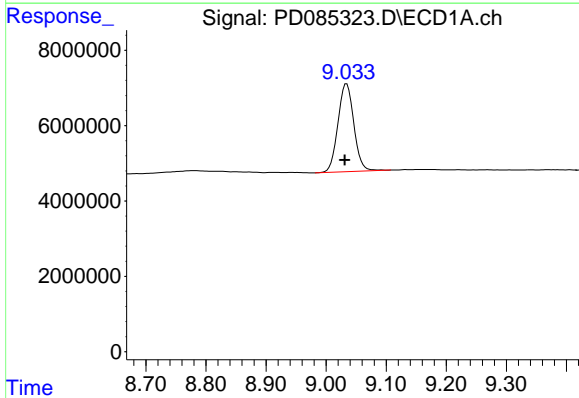
R.T.: 5.534 min
 Delta R.T.: 0.032 min
 Response: 168604908
 Conc: 6821.47 ng/ml



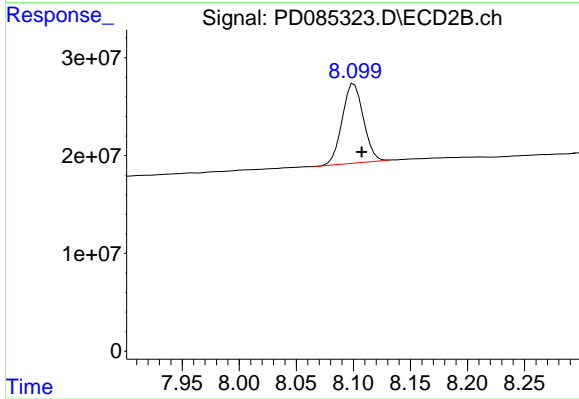
#24 Toxaphene-3
R.T.: 6.996 min
Delta R.T.: -0.036 min
Response: 32556211
Conc: 950.23 ng/ml



#24 Toxaphene-3
R.T.: 5.812 min
Delta R.T.: -0.054 min
Response: 153831901
Conc: 6519.30 ng/ml



#27 Decachlorobiphenyl
R.T.: 9.034 min
Delta R.T.: 0.003 min
Response: 42842683
Conc: 32.80 ng/ml



#27 Decachlorobiphenyl
R.T.: 8.101 min
Delta R.T.: -0.007 min
Response: 104807369
Conc: 30.14 ng/ml