

Data Path : Z:\pestpcbsrv\HPCHEM1\ECD\_D\Data\PD091825\  
 Data File : PD090326.D  
 Signal(s) : Signal #1: ECD1A.ch Signal #2: ECD2B.ch  
 Acq On : 18 Sep 2025 09:36  
 Operator : AR\AJ  
 Sample : HEXANE  
 Misc :  
 ALS Vial : 1 Sample Multiplier: 1

Instrument :  
 ECD\_D  
 ClientSampleId :

Integration File signal 1: autoint1.e  
 Integration File signal 2: autoint2.e  
 Quant Time: Sep 19 05:53:40 2025  
 Quant Method : Z:\pestpcbsrv\HPCHEM1\ECD\_D\Method\PD091825.M  
 Quant Title : GC Extractables  
 QLast Update : Fri Sep 19 05:52:38 2025  
 Response via : Initial Calibration  
 Integrator: ChemStation

Volume Inj. : 1 µl  
 Signal #1 Phase : ZB-MR2 Signal #2 Phase: ZB-MR2  
 Signal #1 Info : 30M x 0.32mm x0.5 Signal #2 Info : 30M x 0.32mm x 0.25µm

Compound	RT#1	RT#2	Resp#1	Resp#2	ng/ml	ng/ml
-----						
System Monitoring Compounds						
1) SA Tetrachlo...	0.000	2.862	0	789212	N.D.	0.029 #
2) SA Decachlor...	9.069	8.038f	703844	5084850	0.146	0.157
Target Compounds						
2) A alpha-BHC	0.000	3.381	0	3374925	N.D.	0.077 #
4) MA Heptachlor	4.909f	4.086	16369161	794692	2.475	0.020 #
6) B beta-BHC	0.000	4.030	0	310286	N.D.	0.018 #
7) B delta-BHC	0.000	4.260	0	11703433	N.D.	0.283 #
9) A Endosulfan I	0.000	5.239	0	550971	N.D.	0.016 #
10) B gamma-Chl...	0.000	5.147f	0	2896496	N.D.	0.074 #
11) B alpha-Chl...	0.000	5.182	0	4233758	N.D.	0.112 #
12) B 4,4'-DDE	0.000	5.338f	0	1469745	N.D.	0.038 #
13) MA Dieldrin	0.000	5.495	0	286060	N.D.	0.007 #
14) MA Endrin	0.000	5.787	0	30385607	N.D.	0.848 #
15) B Endosulfa...	6.758f	6.072	9117166	2971411	1.869	0.088 #
16) A 4,4'-DDD	0.000	5.906f	0	3286902	N.D.	0.101 #
17) MA 4,4'-DDT	0.000	6.184	0	7145712	N.D.	0.208 #
18) B Endrin al...	0.000	6.230f	0	41899187	N.D.	1.779 #
19) B Endosulfa...	0.000	6.490	0	72526	N.D.	0.002 #
21) B Endrin ke...	0.000	6.972	0	38846631	N.D.	1.076 #
22) Mirex	8.135f	7.158f	9345894	7252679	2.523	0.263 #
24) Chlordane-2	5.210f	0.000	246409	0	1.148	N.D. #
25) Chlordane-3	0.000	5.147f	0	2896496	N.D.	0.764 #
26) Chlordane-4	0.000	5.182	0	4233758	N.D.	1.300 #
27) Chlordane-5	0.000	6.072	0	2971411	N.D.	1.958 #

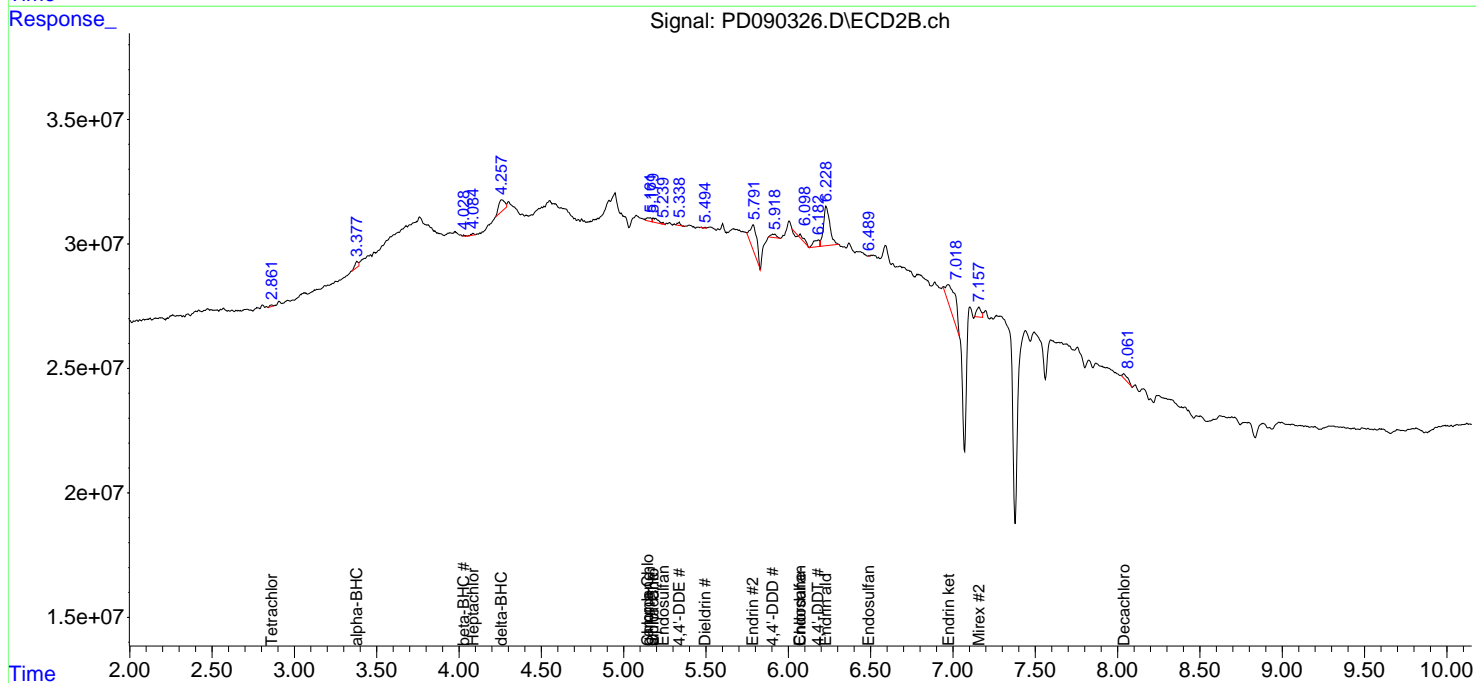
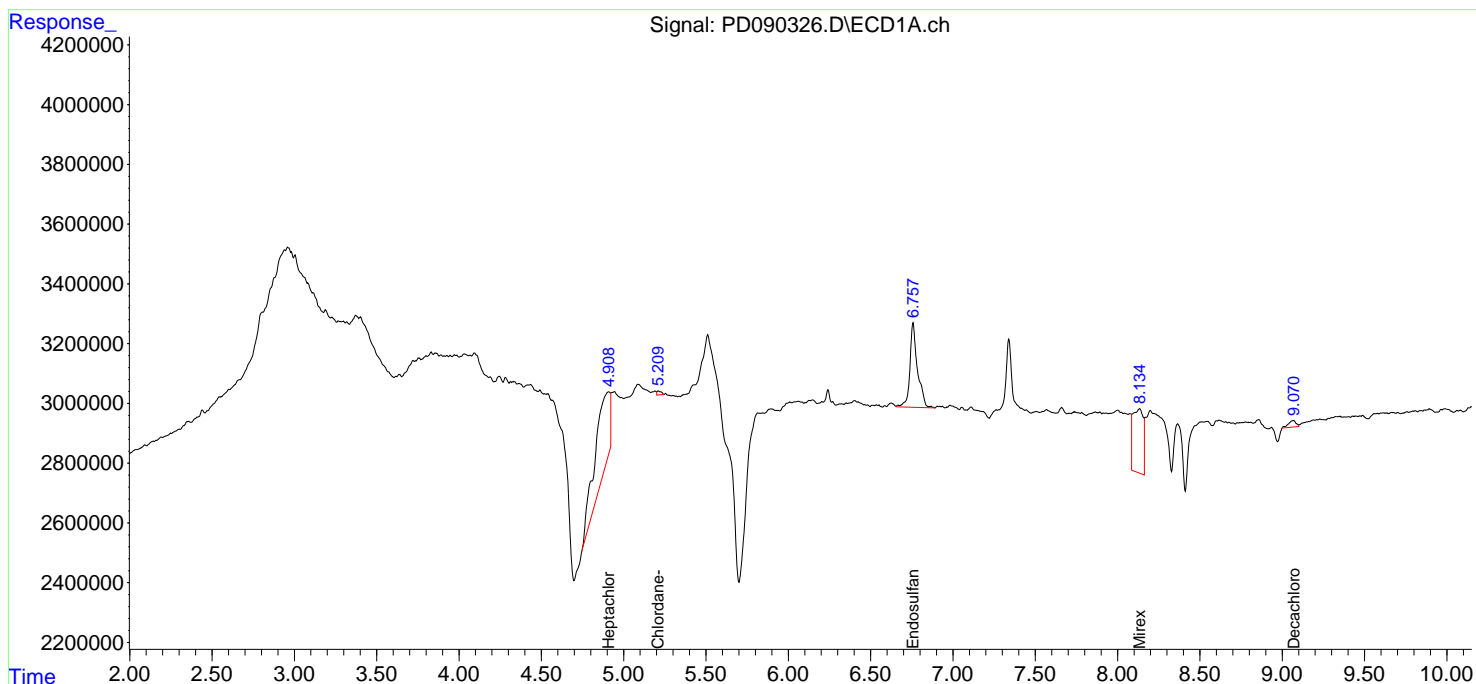
(f)=RT Delta > 1/2 Window (#)=Amounts differ by > 25% (m)=manual int.

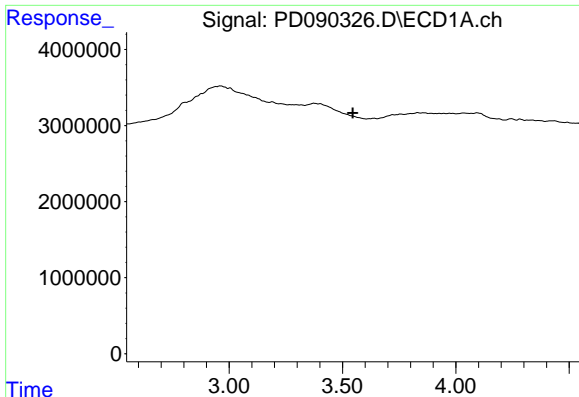
Data Path : Z:\pestpcbsrv\HPCHEM1\ECD\_D\Data\PD091825\  
 Data File : PD090326.D  
 Signal(s) : Signal #1: ECD1A.ch Signal #2: ECD2B.ch  
 Acq On : 18 Sep 2025 09:36  
 Operator : AR\AJ  
 Sample : HEXANE  
 Misc :  
 ALS Vial : 1 Sample Multiplier: 1

Instrument :  
 ECD\_D  
 ClientSampleId :

Integration File signal 1: autoint1.e  
 Integration File signal 2: autoint2.e  
 Quant Time: Sep 19 05:53:40 2025  
 Quant Method : Z:\pestpcbsrv\HPCHEM1\ECD\_D\Method\PD091825.M  
 Quant Title : GC Extractables  
 QLast Update : Fri Sep 19 05:52:38 2025  
 Response via : Initial Calibration  
 Integrator: ChemStation

Volume Inj. : 1 µl  
 Signal #1 Phase : ZB-MR1 Signal #2 Phase: ZB-MR2  
 Signal #1 Info : 30M x 0.32mm x0.5 Signal #2 Info : 30M x 0.32mm x 0.25µm

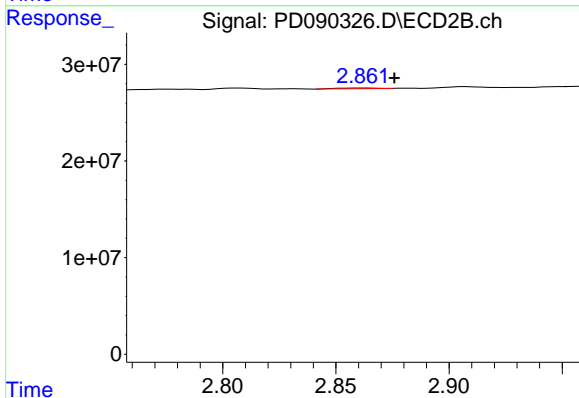




#1 Tetrachloro-m-xylene

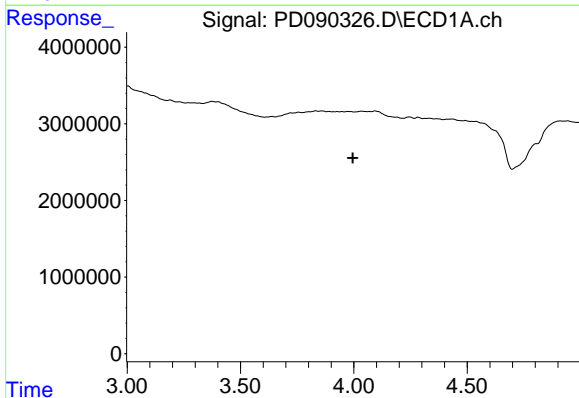
R.T.: 0.000 min  
 Exp R.T.: 3.546 min  
 Response: 0  
 Conc: N.D.

Instrument :  
 ECD\_D  
 ClientSampleId :



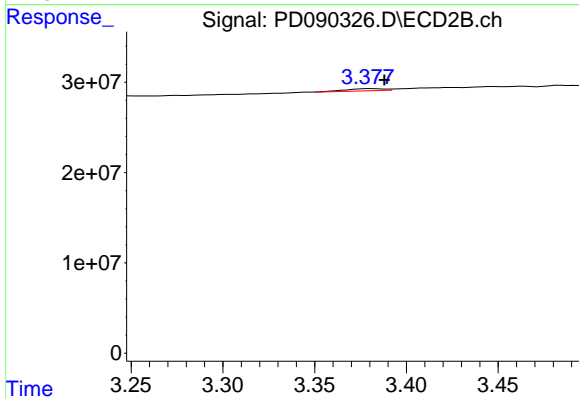
#1 Tetrachloro-m-xylene

R.T.: 2.862 min  
 Delta R.T.: -0.014 min  
 Response: 789212  
 Conc: 0.03 ng/ml



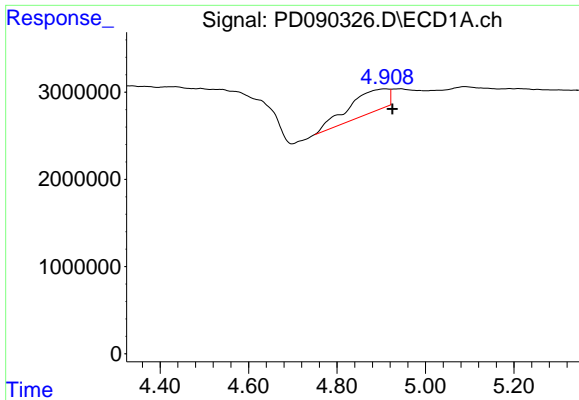
#2 alpha-BHC

R.T.: 0.000 min  
 Exp R.T.: 3.995 min  
 Response: 0  
 Conc: N.D.



#2 alpha-BHC

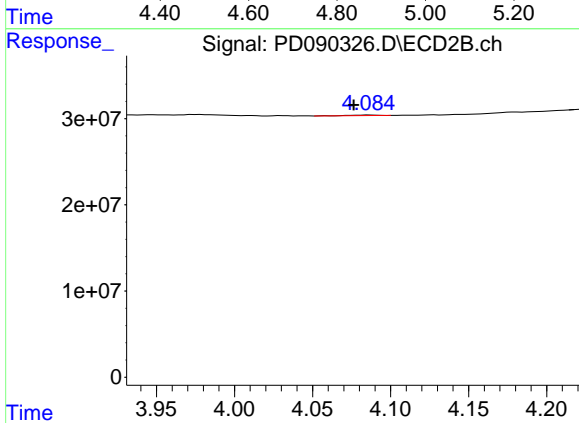
R.T.: 3.381 min  
 Delta R.T.: -0.007 min  
 Response: 3374925  
 Conc: 0.08 ng/ml



#4 Heptachlor

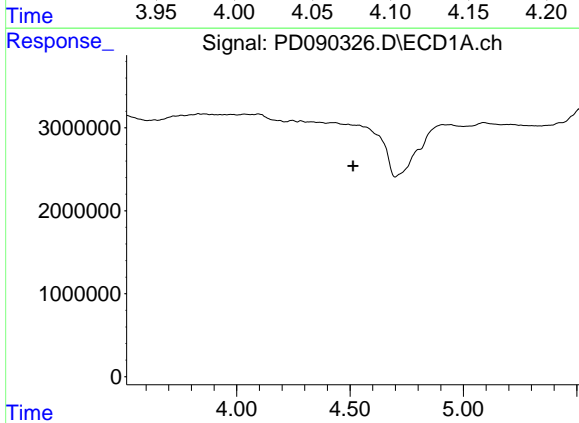
R.T.: 4.909 min  
 Delta R.T.: -0.016 min  
 Response: 16369161  
 Conc: 2.48 ng/ml

Instrument :  
 ECD\_D  
 ClientSampleId :



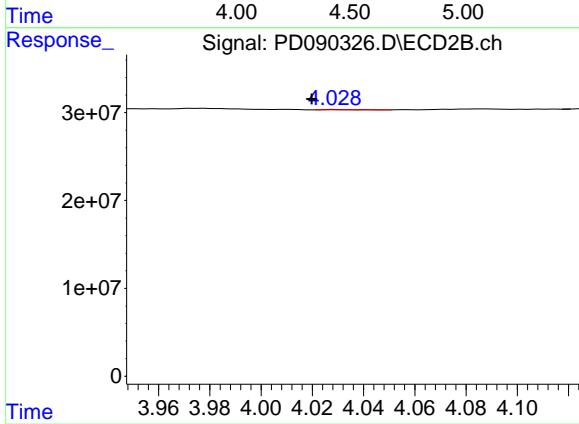
#4 Heptachlor

R.T.: 4.086 min  
 Delta R.T.: 0.010 min  
 Response: 794692  
 Conc: 0.02 ng/ml



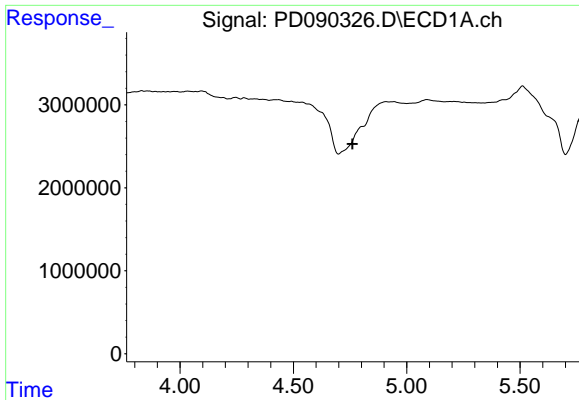
#6 beta-BHC

R.T.: 0.000 min  
 Exp R.T. : 4.513 min  
 Response: 0  
 Conc: N.D.



#6 beta-BHC

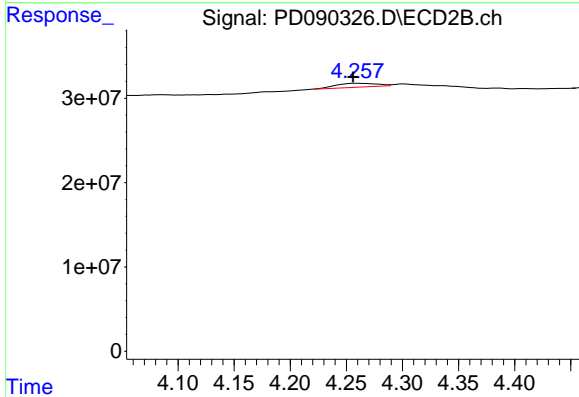
R.T.: 4.030 min  
 Delta R.T.: 0.010 min  
 Response: 310286  
 Conc: 0.02 ng/ml



#7 delta-BHC

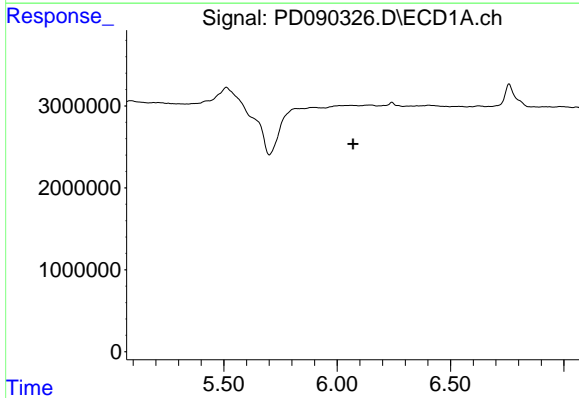
R.T.: 0.000 min  
 Exp R.T.: 4.761 min  
 Response: 0  
 Conc: N.D.

Instrument :  
 ECD\_D  
 ClientSampleId :



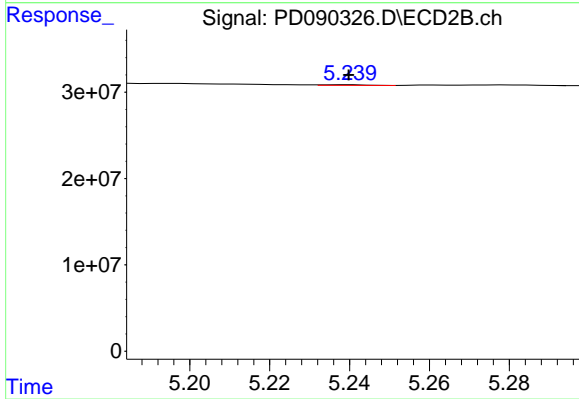
#7 delta-BHC

R.T.: 4.260 min  
 Delta R.T.: 0.004 min  
 Response: 11703433  
 Conc: 0.28 ng/ml



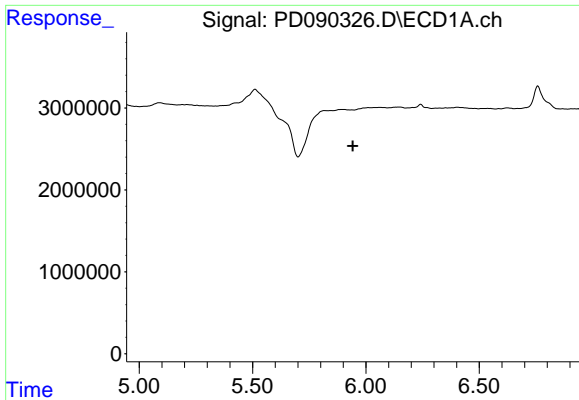
#9 Endosulfan I

R.T.: 0.000 min  
 Exp R.T.: 6.070 min  
 Response: 0  
 Conc: N.D.



#9 Endosulfan I

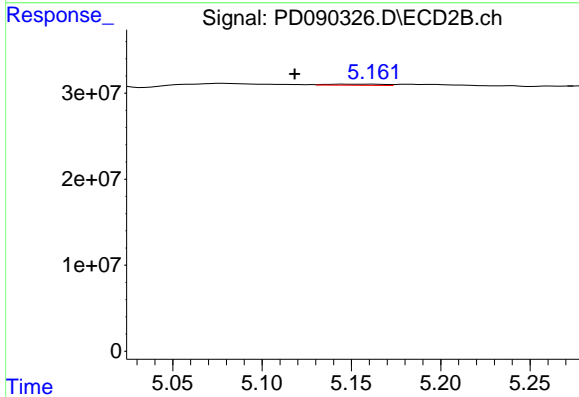
R.T.: 5.239 min  
 Delta R.T.: 0.000 min  
 Response: 550971  
 Conc: 0.02 ng/ml



#10 gamma-Chlordane

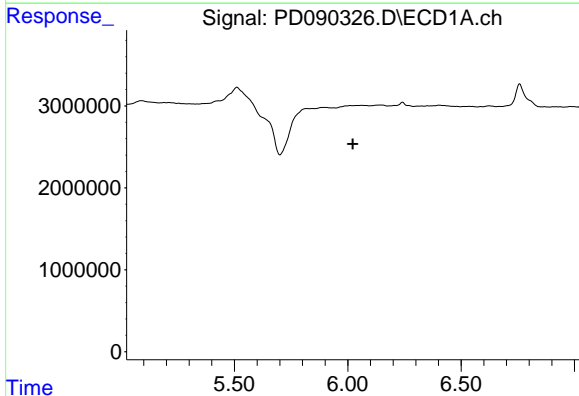
R.T.: 0.000 min  
 Exp R.T.: 5.942 min  
 Response: 0  
 Conc: N.D.

Instrument :  
 ECD\_D  
 ClientSampleId :



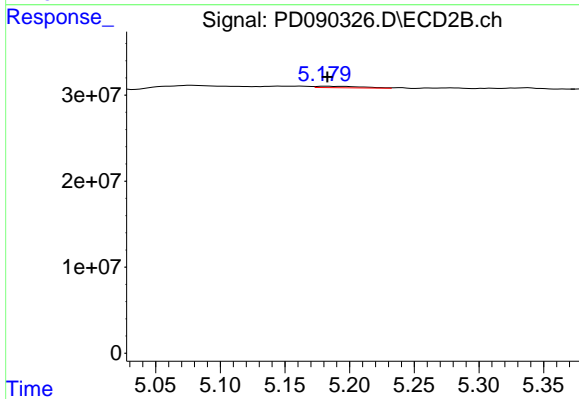
#10 gamma-Chlordane

R.T.: 5.147 min  
 Delta R.T.: 0.029 min  
 Response: 2896496  
 Conc: 0.07 ng/ml



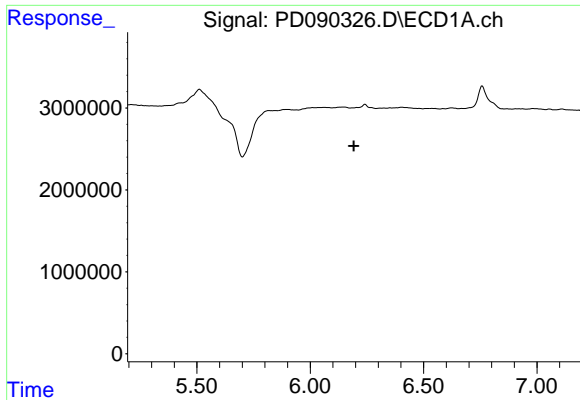
#11 alpha-Chlordane

R.T.: 0.000 min  
 Exp R.T.: 6.022 min  
 Response: 0  
 Conc: N.D.



#11 alpha-Chlordane

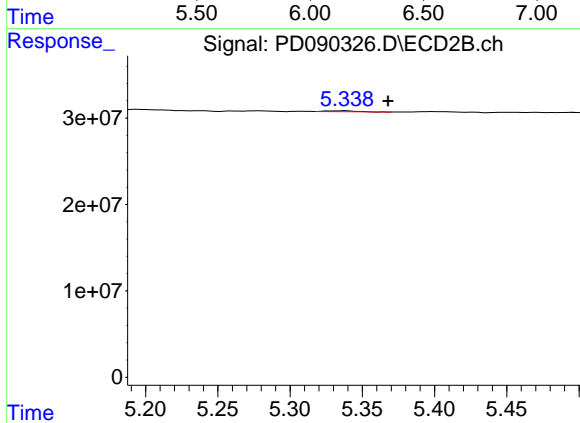
R.T.: 5.182 min  
 Delta R.T.: -0.001 min  
 Response: 4233758  
 Conc: 0.11 ng/ml



#12 4,4'-DDE

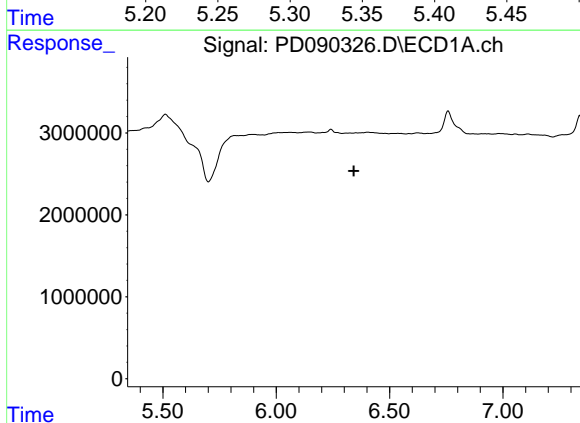
R.T.: 0.000 min  
 Exp R.T.: 6.192 min  
 Response: 0  
 Conc: N.D.

Instrument :  
 ECD\_D  
 ClientSampleId :



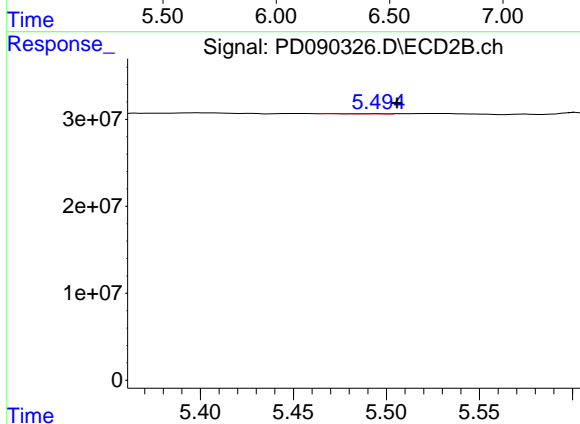
#12 4,4'-DDE

R.T.: 5.338 min  
 Delta R.T.: -0.030 min  
 Response: 1469745  
 Conc: 0.04 ng/ml



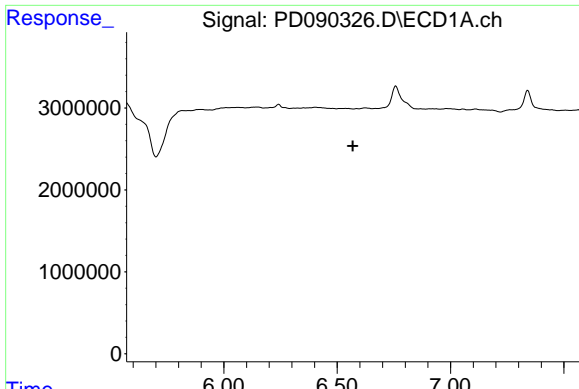
#13 Dieldrin

R.T.: 0.000 min  
 Exp R.T.: 6.343 min  
 Response: 0  
 Conc: N.D.



#13 Dieldrin

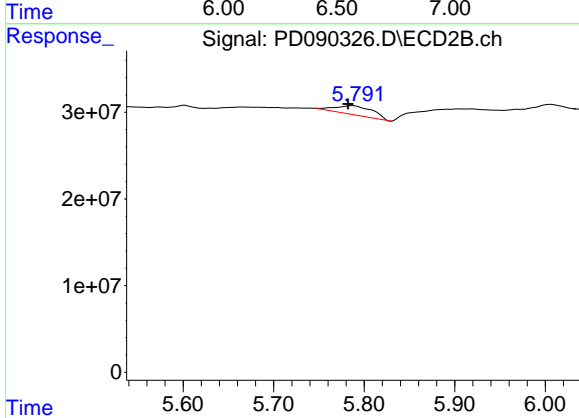
R.T.: 5.495 min  
 Delta R.T.: -0.010 min  
 Response: 286060  
 Conc: 0.01 ng/ml



#14 Endrin

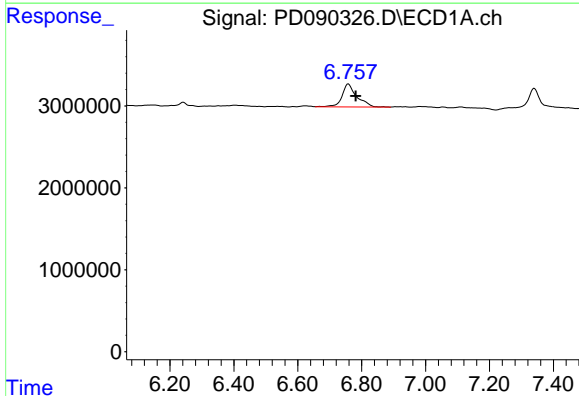
R.T.: 0.000 min  
 Exp R.T.: 6.569 min  
 Response: 0  
 Conc: N.D.

Instrument :  
 ECD\_D  
 ClientSampleId :



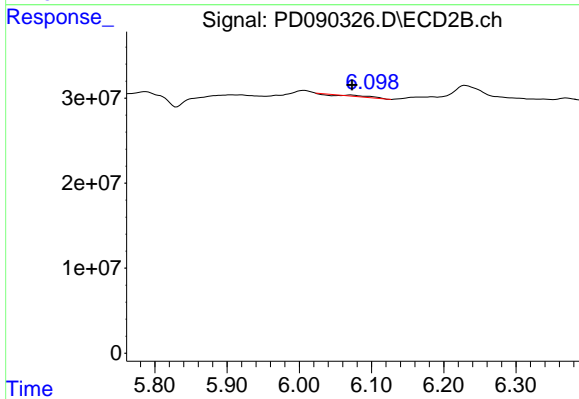
#14 Endrin

R.T.: 5.787 min  
 Delta R.T.: 0.005 min  
 Response: 30385607  
 Conc: 0.85 ng/ml



#15 Endosulfan II

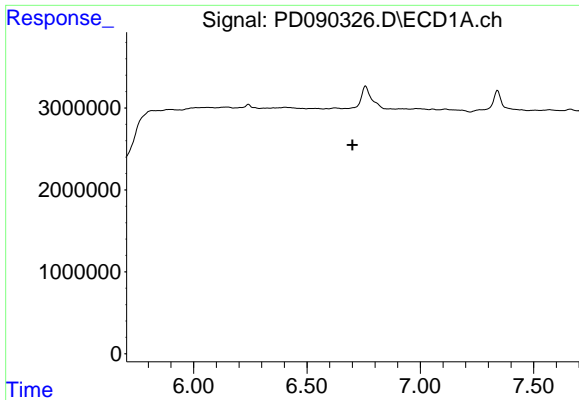
R.T.: 6.758 min  
 Delta R.T.: -0.023 min  
 Response: 9117166  
 Conc: 1.87 ng/ml



#15 Endosulfan II

R.T.: 6.072 min  
 Delta R.T.: -0.001 min  
 Response: 2971411  
 Conc: 0.09 ng/ml

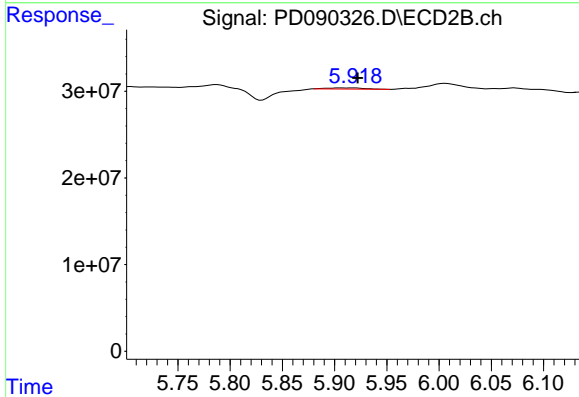




#16 4,4'-DDD

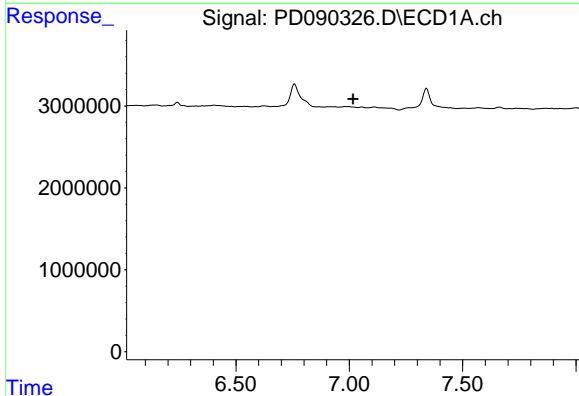
R.T.: 0.000 min  
 Exp R.T.: 6.701 min  
 Response: 0  
 Conc: N.D.

Instrument :  
 ECD\_D  
 ClientSampleId :



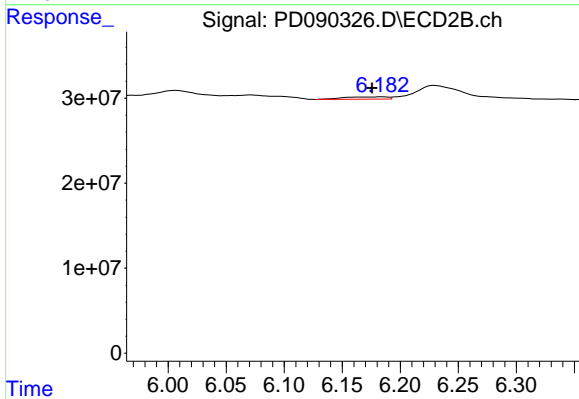
#16 4,4'-DDD

R.T.: 5.906 min  
 Delta R.T.: -0.016 min  
 Response: 3286902  
 Conc: 0.10 ng/ml



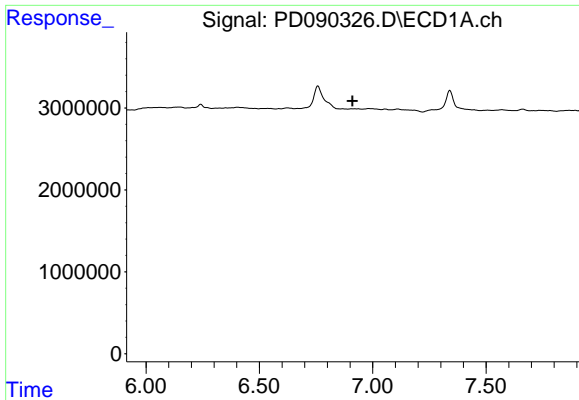
#17 4,4'-DDT

R.T.: 0.000 min  
 Exp R.T.: 7.017 min  
 Response: 0  
 Conc: N.D.



#17 4,4'-DDT

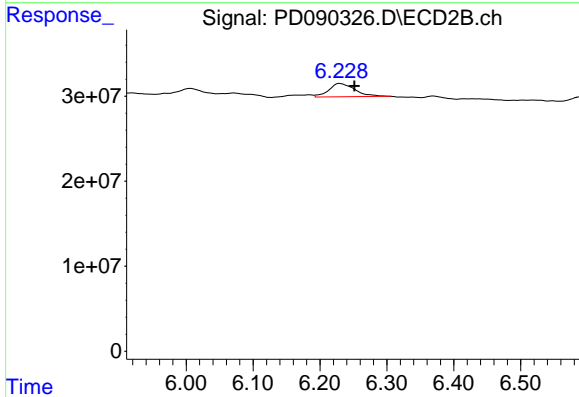
R.T.: 6.184 min  
 Delta R.T.: 0.009 min  
 Response: 7145712  
 Conc: 0.21 ng/ml



#18 Endrin aldehyde

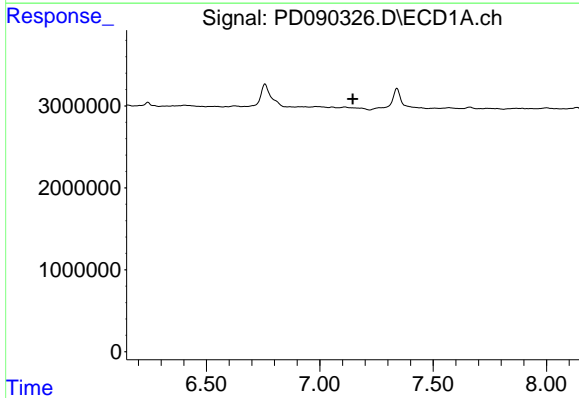
R.T.: 0.000 min  
 Exp R.T. : 6.911 min  
 Response: 0  
 Conc: N.D.

Instrument :  
 ECD\_D  
 ClientSampleId :



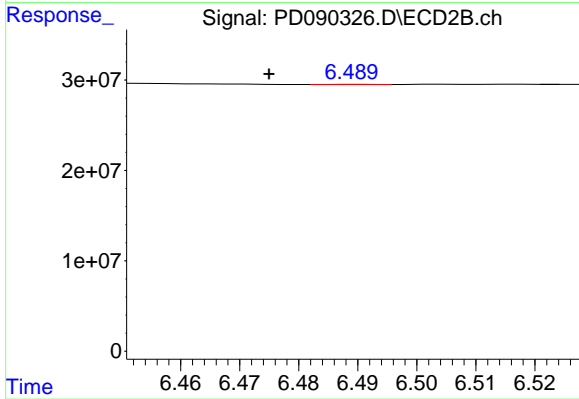
#18 Endrin aldehyde

R.T.: 6.230 min  
 Delta R.T.: -0.022 min  
 Response: 41899187  
 Conc: 1.78 ng/ml



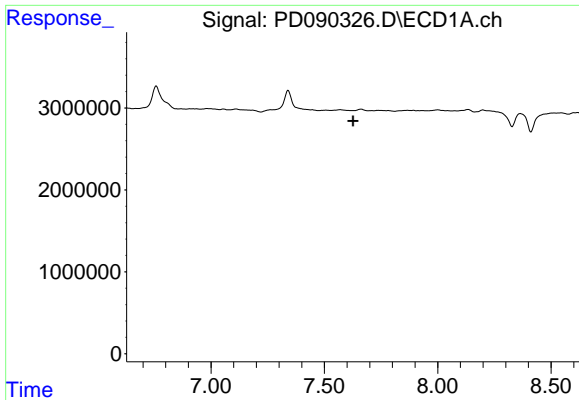
#19 Endosulfan Sulfate

R.T.: 0.000 min  
 Exp R.T. : 7.146 min  
 Response: 0  
 Conc: N.D.



#19 Endosulfan Sulfate

R.T.: 6.490 min  
 Delta R.T.: 0.015 min  
 Response: 72526  
 Conc: 0.00 ng/ml

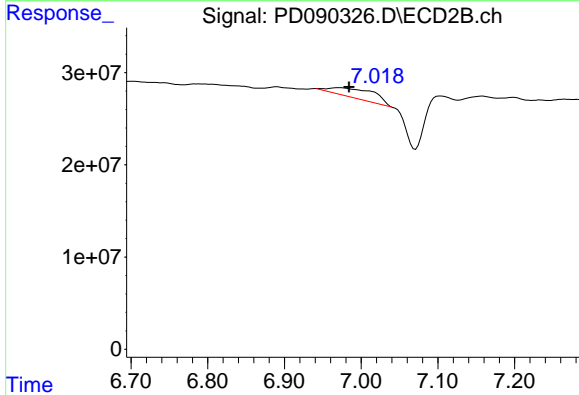


#21 Endrin ketone

R.T.: 0.000 min  
 Exp R.T.: 7.627 min  
 Response: 0  
 Conc: N.D.

Instrument :  
 ECD\_D  
 ClientSampleId :

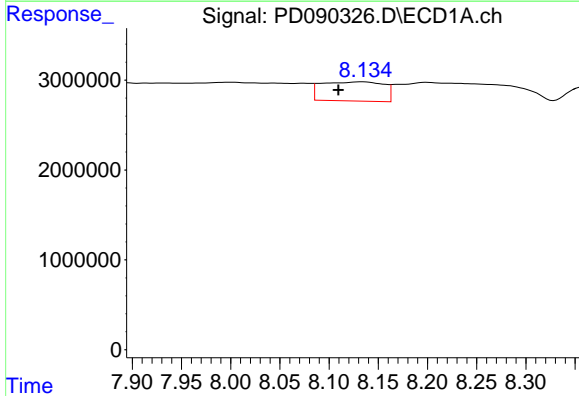
Time



#21 Endrin ketone

R.T.: 6.972 min  
 Delta R.T.: -0.012 min  
 Response: 38846631  
 Conc: 1.08 ng/ml

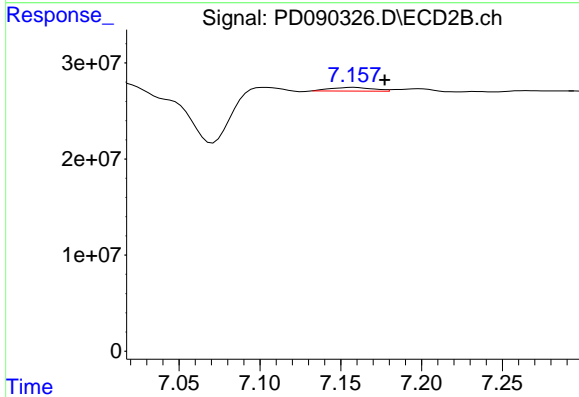
Time



#22 Mirex

R.T.: 8.135 min  
 Delta R.T.: 0.025 min  
 Response: 9345894  
 Conc: 2.52 ng/ml

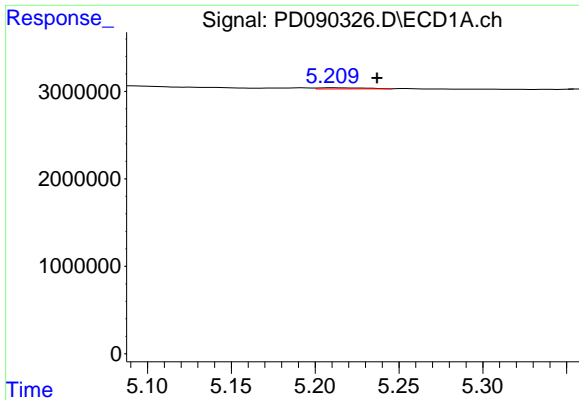
Time



#22 Mirex

R.T.: 7.158 min  
 Delta R.T.: -0.019 min  
 Response: 7252679  
 Conc: 0.26 ng/ml

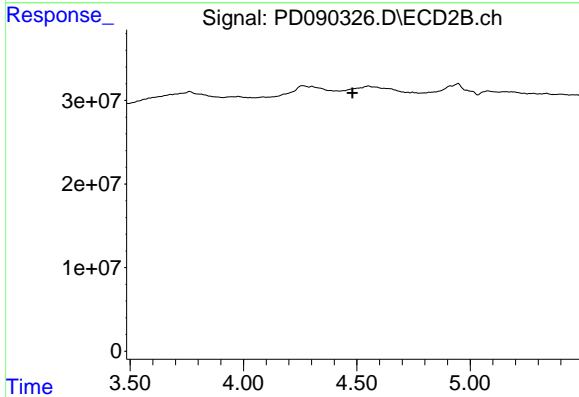
Time



#24 Chlordane-2

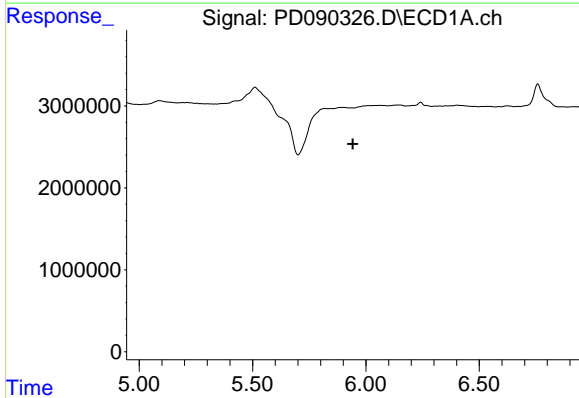
R.T.: 5.210 min  
 Delta R.T.: -0.027 min  
 Response: 246409  
 Conc: 1.15 ng/ml

Instrument :  
 ECD\_D  
 ClientSampleId :



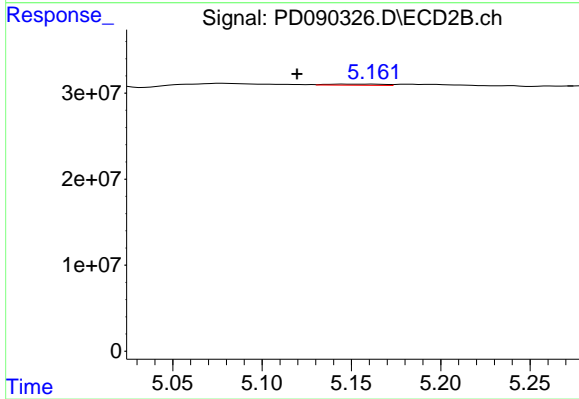
#24 Chlordane-2

R.T.: 0.000 min  
 Exp R.T. : 4.481 min  
 Response: 0  
 Conc: N.D.



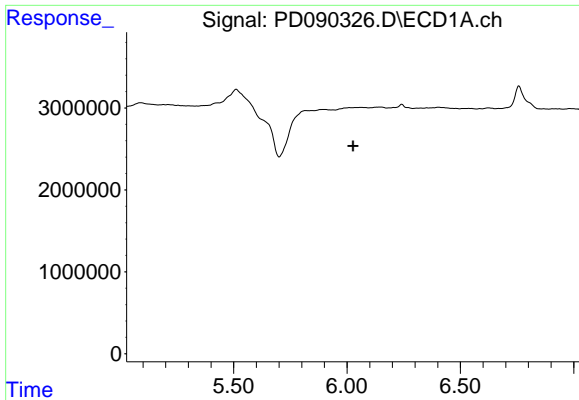
#25 Chlordane-3

R.T.: 0.000 min  
 Exp R.T. : 5.942 min  
 Response: 0  
 Conc: N.D.



#25 Chlordane-3

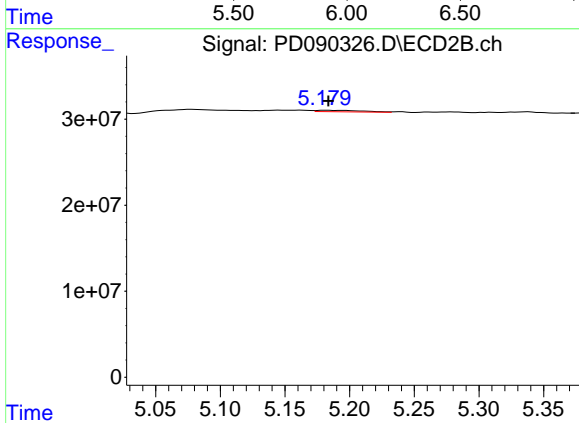
R.T.: 5.147 min  
 Delta R.T.: 0.028 min  
 Response: 2896496  
 Conc: 0.76 ng/ml



#26 Chlordane-4

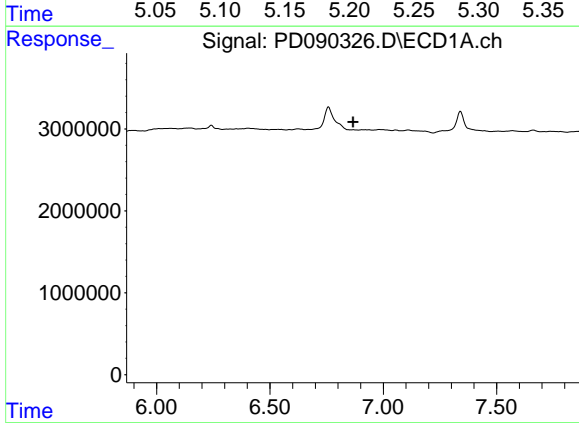
R.T.: 0.000 min  
 Exp R.T.: 6.027 min  
 Response: 0  
 Conc: N.D.

Instrument :  
 ECD\_D  
 ClientSampleId :



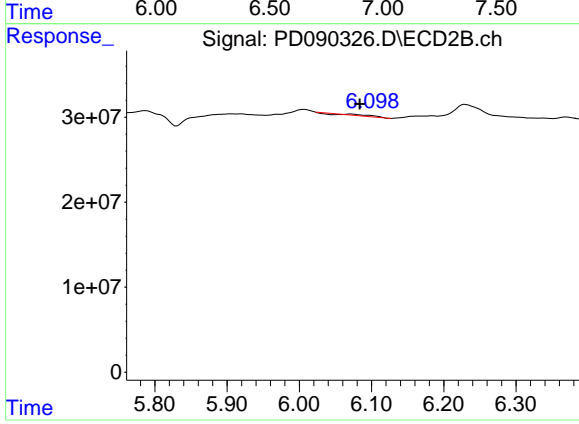
#26 Chlordane-4

R.T.: 5.182 min  
 Delta R.T.: -0.002 min  
 Response: 4233758  
 Conc: 1.30 ng/ml



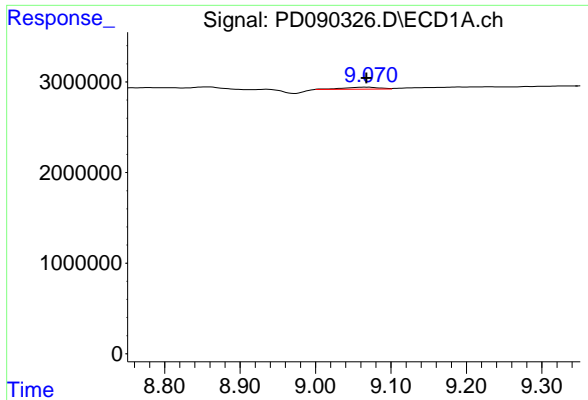
#27 Chlordane-5

R.T.: 0.000 min  
 Exp R.T.: 6.867 min  
 Response: 0  
 Conc: N.D.



#27 Chlordane-5

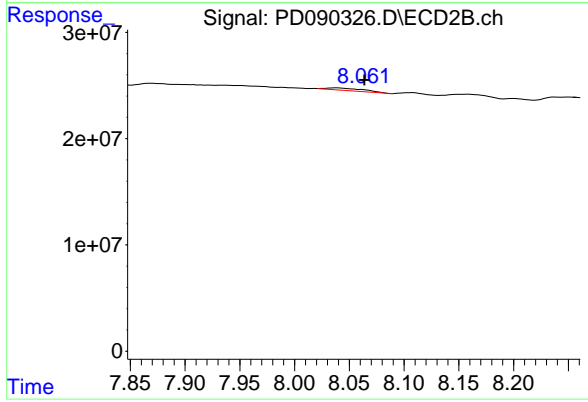
R.T.: 6.072 min  
 Delta R.T.: -0.011 min  
 Response: 2971411  
 Conc: 1.96 ng/ml



#28 Decachlorobiphenyl

R.T.: 9.069 min  
 Delta R.T.: 0.001 min  
 Response: 703844  
 Conc: 0.15 ng/ml

Instrument :  
 ECD\_D  
 ClientSampleId :



#28 Decachlorobiphenyl

R.T.: 8.038 min  
 Delta R.T.: -0.026 min  
 Response: 5084850  
 Conc: 0.16 ng/ml