

Data Path : Z:\pestpcbsrv\HPCHEM1\ECD_D\Data\PD091825\
 Data File : PD090333.D
 Signal(s) : Signal #1: ECD1A.ch Signal #2: ECD2B.ch
 Acq On : 18 Sep 2025 11:11
 Operator : AR\AJ
 Sample : PSTDIC025
 Misc :
 ALS Vial : 8 Sample Multiplier: 1

Instrument :
 ECD_D
 ClientSampleId :

Integration File signal 1: autoint1.e
 Integration File signal 2: autoint2.e
 Quant Time: Sep 19 05:14:35 2025
 Quant Method : Z:\pestpcbsrv\HPCHEM1\ECD_D\Method\PD091825.M
 Quant Title : GC Extractables
 QLast Update : Fri Sep 19 04:54:40 2025
 Response via : Initial Calibration
 Integrator: ChemStation

Volume Inj. : 1 µl
 Signal #1 Phase : ZB-MR2 Signal #2 Phase: ZB-MR2
 Signal #1 Info : 30M x 0.32mm x0.5 Signal #2 Info : 30M x 0.32mm x 0.25µm

	Compound	RT#1	RT#2	Resp#1	Resp#2	ng/ml	ng/ml

System Monitoring Compounds							
1)	SA Tetrachlo...	3.546	2.876	82854234	691.8E6	26.642	26.597
28)	SA Decachlor...	9.067	8.064	121.9E6	806.0E6	26.689	26.593
Target Compounds							
2)	A alpha-BHC	3.996	3.388	166.5E6	1093.8E6	24.032	26.119
3)	MA gamma-BHC...	4.326	3.724	158.3E6	1016.2E6	24.266	26.128
4)	MA Heptachlor	4.925	4.077	161.1E6	1028.9E6	24.830	26.459
5)	MB Aldrin	5.266	4.363	153.4E6	1007.5E6	24.606	26.324
6)	B beta-BHC	4.513	4.020	64059316	438.0E6	25.997	26.626
7)	B delta-BHC	4.762	4.257	154.9E6	1031.3E6	24.067	26.027
8)	B Heptachlo...	5.686	4.866	138.7E6	930.1E6	25.131	26.664
9)	A Endosulfan I	6.070	5.241	132.4E6	881.0E6	25.235	26.632
10)	B gamma-Chl...	5.942	5.119	138.8E6	984.2E6	24.845	26.222
11)	B alpha-Chl...	6.023	5.183	140.5E6	948.1E6	25.069	26.349
12)	B 4,4'-DDE	6.192	5.368	125.6E6	969.1E6	24.492	26.415
13)	MA Dieldrin	6.343	5.506	139.8E6	988.2E6	24.705	26.451
14)	MA Endrin	6.570	5.782	118.3E6	936.3E6	24.696	27.520
15)	B Endosulfa...	6.782	6.074	118.3E6	856.7E6	24.811	26.538
16)	A 4,4'-DDD	6.702	5.922	99114690	822.6E6	24.692	26.527
17)	MA 4,4'-DDT	7.017	6.176	107.9E6	868.4E6	24.672	26.117
18)	B Endrin al...	6.912	6.252	84815631	597.7E6	25.635	26.373
19)	B Endosulfa...	7.146	6.476	113.5E6	829.7E6	25.489	26.654
20)	A Methoxychlor	7.490	6.747	58886348	447.5E6	26.132	26.998
21)	B Endrin ke...	7.627	6.985	121.6E6	920.0E6	25.368	26.778
22)	Mirex	8.110	7.178	93886990	701.1E6	26.915	27.043

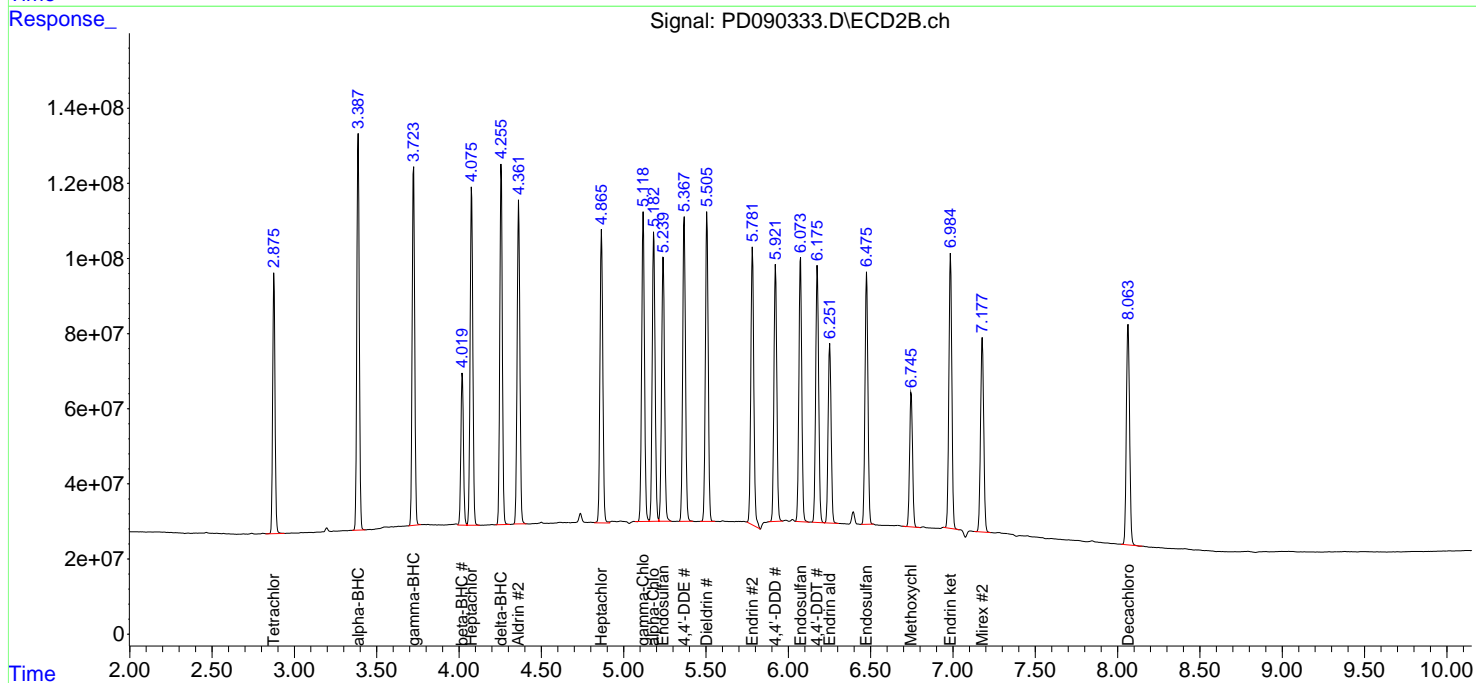
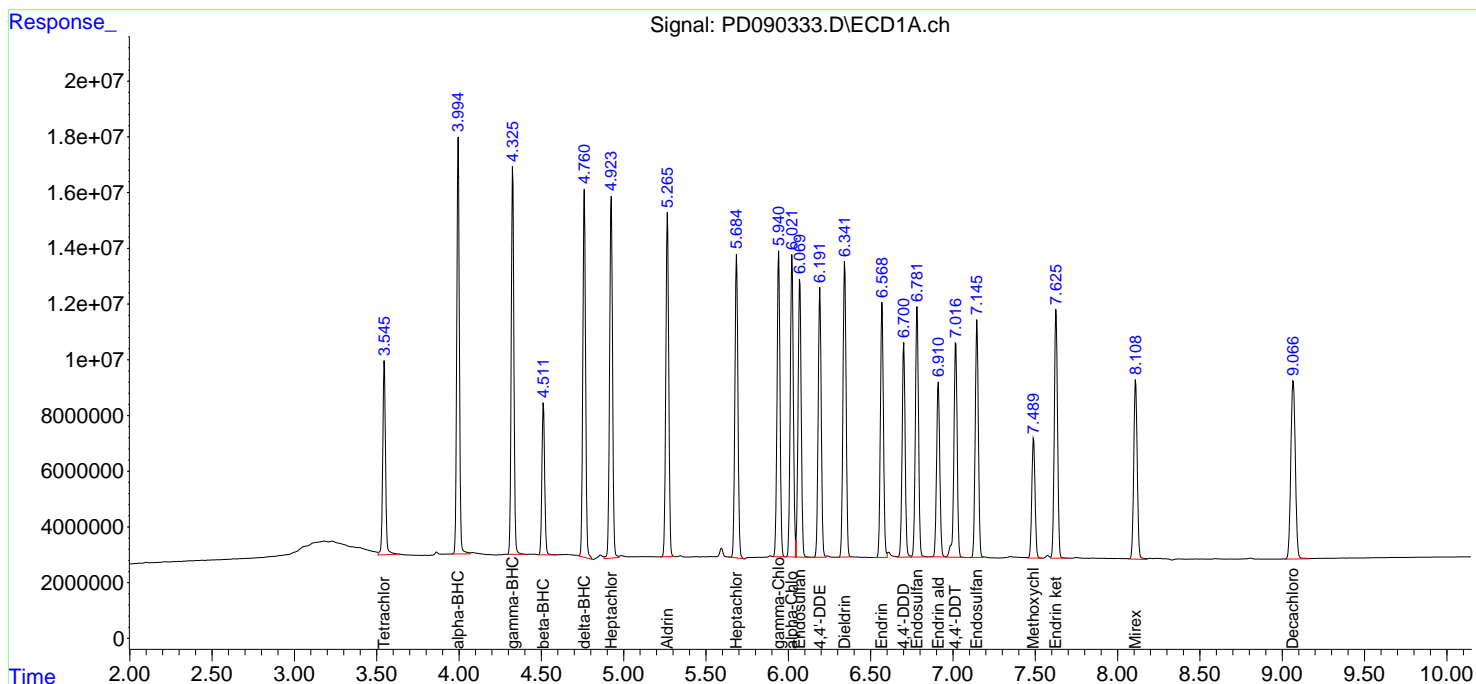
(f)=RT Delta > 1/2 Window (#)=Amounts differ by > 25% (m)=manual int.

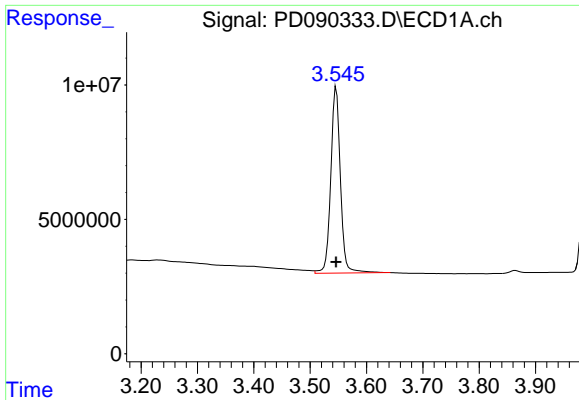
Data Path : Z:\pestpcbsrv\HPCHEM1\ECD_D\Data\PD091825\
 Data File : PD090333.D
 Signal(s) : Signal #1: ECD1A.ch Signal #2: ECD2B.ch
 Acq On : 18 Sep 2025 11:11
 Operator : AR\AJ
 Sample : PSTDICC025
 Misc :
 ALS Vial : 8 Sample Multiplier: 1

Instrument :
 ECD_D
 ClientSampleId :

Integration File signal 1: autoint1.e
 Integration File signal 2: autoint2.e
 Quant Time: Sep 19 05:14:35 2025
 Quant Method : Z:\pestpcbsrv\HPCHEM1\ECD_D\Method\PD091825.M
 Quant Title : GC Extractables
 QLast Update : Fri Sep 19 04:54:40 2025
 Response via : Initial Calibration
 Integrator: ChemStation

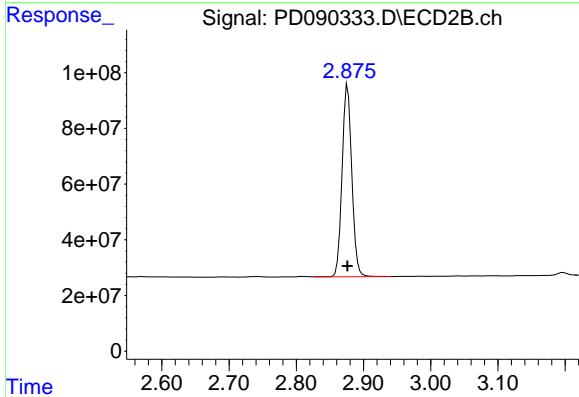
Volume Inj. : 1 µl
 Signal #1 Phase : ZB-MR1 Signal #2 Phase: ZB-MR2
 Signal #1 Info : 30M x 0.32mm x0.5 Signal #2 Info : 30M x 0.32mm x 0.25µm



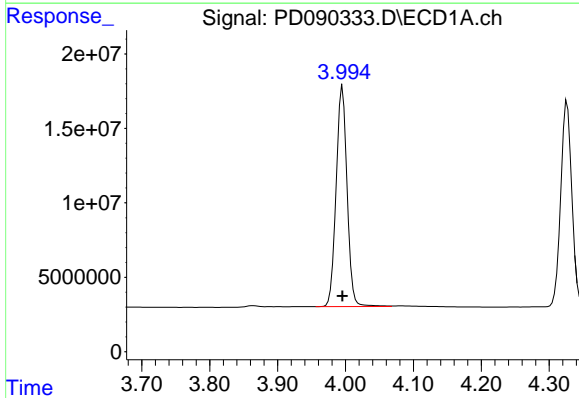


#1 Tetrachloro-m-xylene
 R.T.: 3.546 min
 Delta R.T.: 0.000 min
 Response: 82854234
 Conc: 26.64 ng/ml

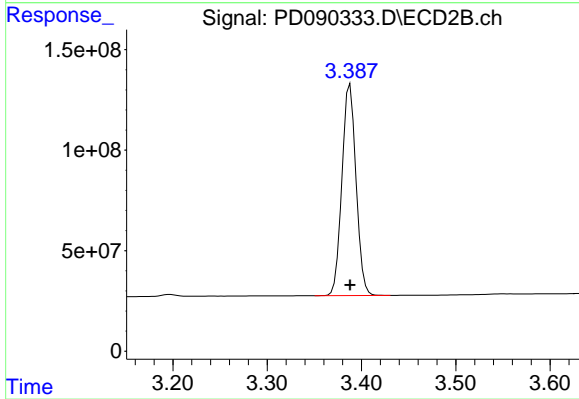
Instrument :
 ECD_D
 ClientSampleId :



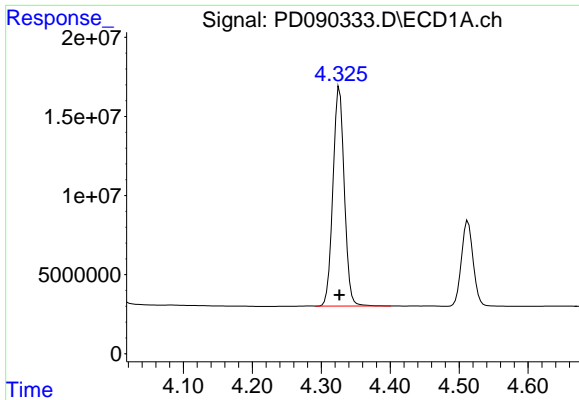
#1 Tetrachloro-m-xylene
 R.T.: 2.876 min
 Delta R.T.: 0.000 min
 Response: 691796344
 Conc: 26.60 ng/ml



#2 alpha-BHC
 R.T.: 3.996 min
 Delta R.T.: 0.000 min
 Response: 166527736
 Conc: 24.03 ng/ml

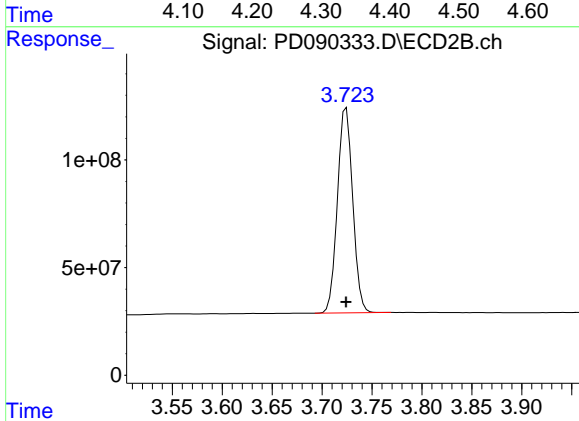


#2 alpha-BHC
 R.T.: 3.388 min
 Delta R.T.: 0.000 min
 Response: 1093790855
 Conc: 26.12 ng/ml

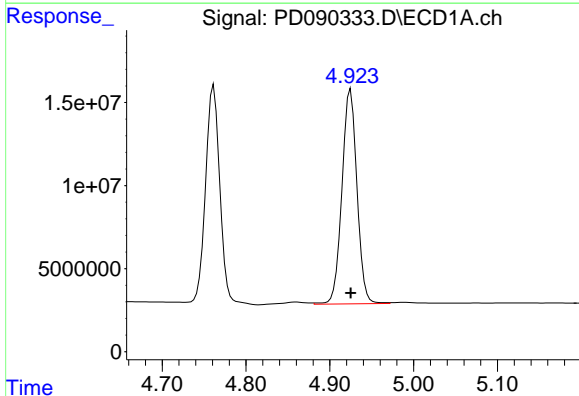


#3 gamma-BHC (Lindane)
 R.T.: 4.326 min
 Delta R.T.: 0.000 min
 Response: 158317462
 Conc: 24.27 ng/ml

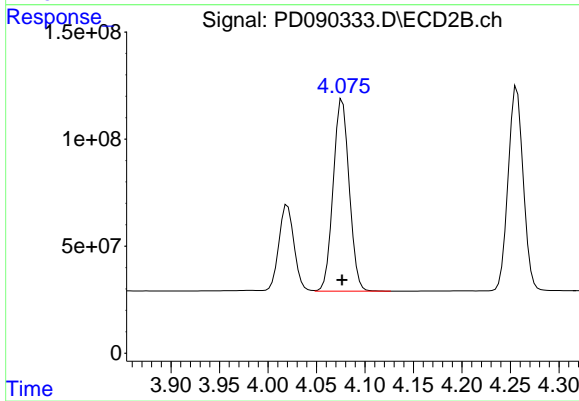
Instrument :
 ECD_D
 ClientSampleId :



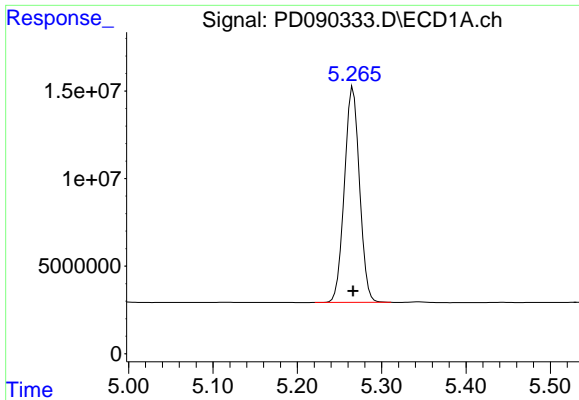
#3 gamma-BHC (Lindane)
 R.T.: 3.724 min
 Delta R.T.: 0.000 min
 Response: 1016199017
 Conc: 26.13 ng/ml



#4 Heptachlor
 R.T.: 4.925 min
 Delta R.T.: 0.000 min
 Response: 161051161
 Conc: 24.83 ng/ml

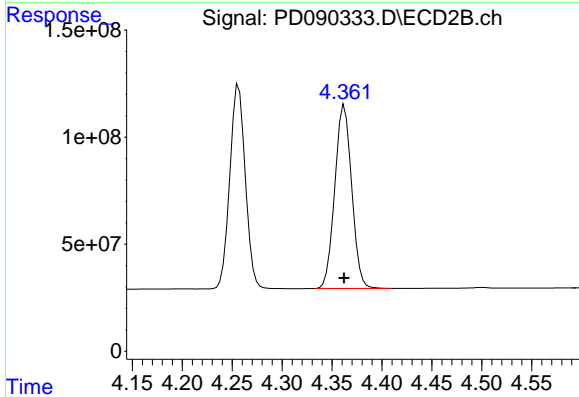


#4 Heptachlor
 R.T.: 4.077 min
 Delta R.T.: 0.000 min
 Response: 1028906691
 Conc: 26.46 ng/ml

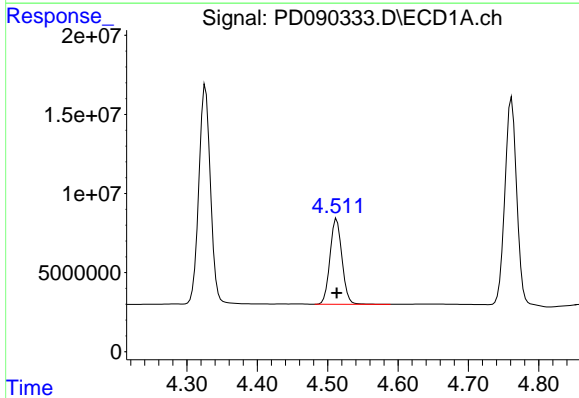


#5 Aldrin
 R.T.: 5.266 min
 Delta R.T.: 0.000 min
 Response: 153388666
 Conc: 24.61 ng/ml

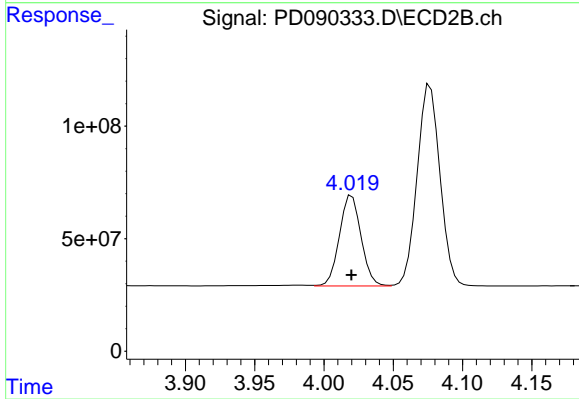
Instrument :
 ECD_D
 ClientSampleId :



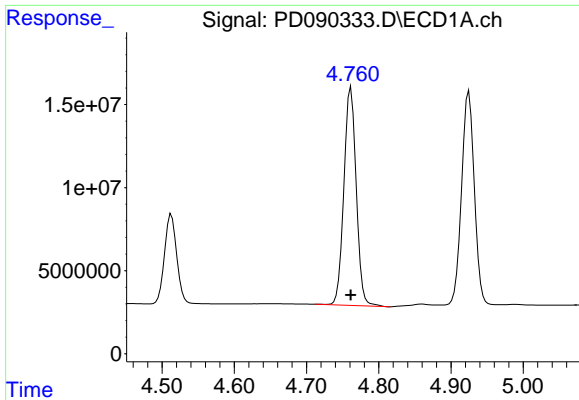
#5 Aldrin
 R.T.: 4.363 min
 Delta R.T.: 0.000 min
 Response: 1007501721
 Conc: 26.32 ng/ml



#6 beta-BHC
 R.T.: 4.513 min
 Delta R.T.: 0.000 min
 Response: 64059316
 Conc: 26.00 ng/ml



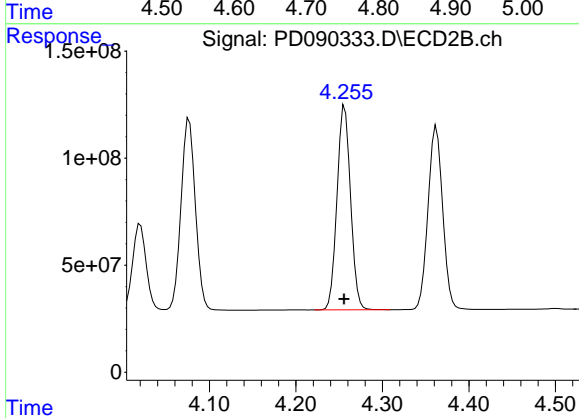
#6 beta-BHC
 R.T.: 4.020 min
 Delta R.T.: 0.000 min
 Response: 438015052
 Conc: 26.63 ng/ml



#7 delta-BHC

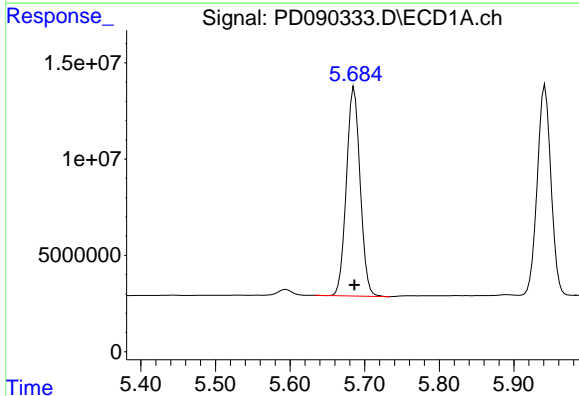
R.T.: 4.762 min
 Delta R.T.: 0.000 min
 Response: 154914773
 Conc: 24.07 ng/ml

Instrument :
 ECD_D
 ClientSampleId :



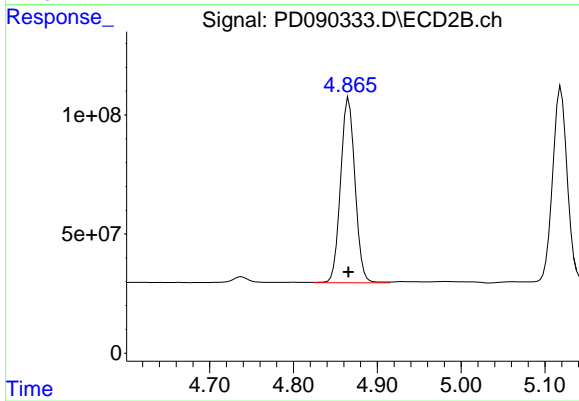
#7 delta-BHC

R.T.: 4.257 min
 Delta R.T.: 0.000 min
 Response: 1031320788
 Conc: 26.03 ng/ml



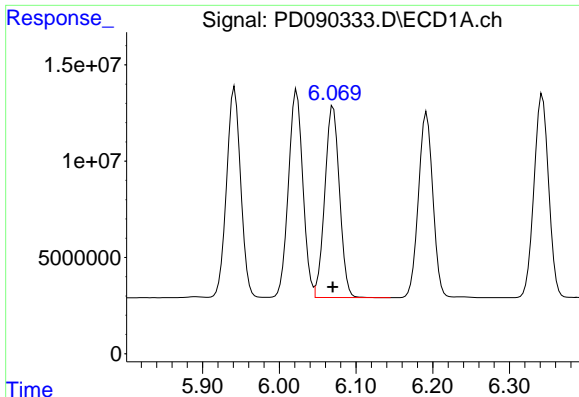
#8 Heptachlor epoxide

R.T.: 5.686 min
 Delta R.T.: 0.000 min
 Response: 138738621
 Conc: 25.13 ng/ml



#8 Heptachlor epoxide

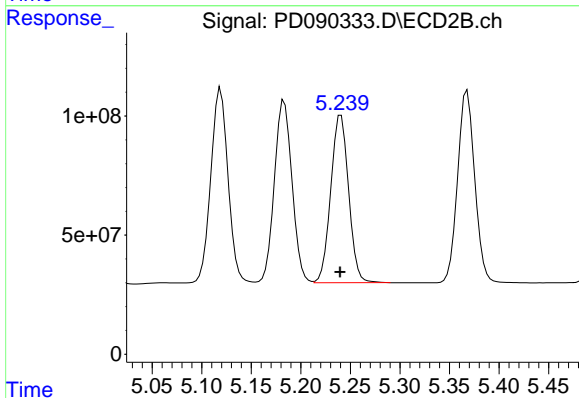
R.T.: 4.866 min
 Delta R.T.: 0.000 min
 Response: 930092968
 Conc: 26.66 ng/ml



#9 Endosulfan I

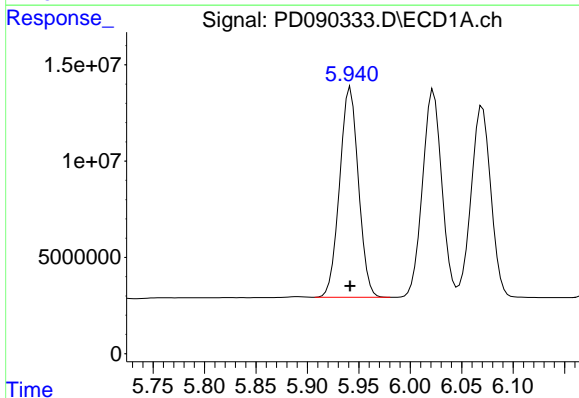
R.T.: 6.070 min
 Delta R.T.: 0.000 min
 Response: 132405225
 Conc: 25.23 ng/ml

Instrument :
 ECD_D
 ClientSampleId :



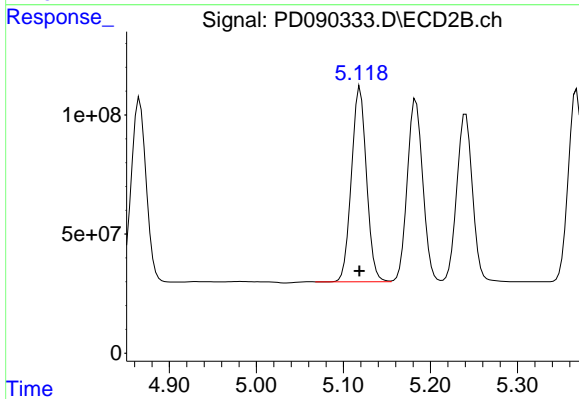
#9 Endosulfan I

R.T.: 5.241 min
 Delta R.T.: 0.000 min
 Response: 881026712
 Conc: 26.63 ng/ml



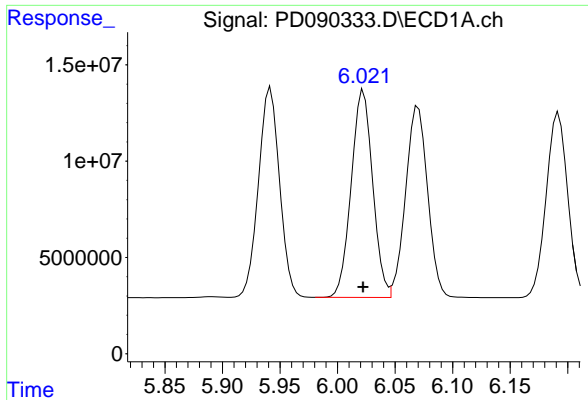
#10 gamma-Chlordane

R.T.: 5.942 min
 Delta R.T.: 0.000 min
 Response: 138757109
 Conc: 24.85 ng/ml



#10 gamma-Chlordane

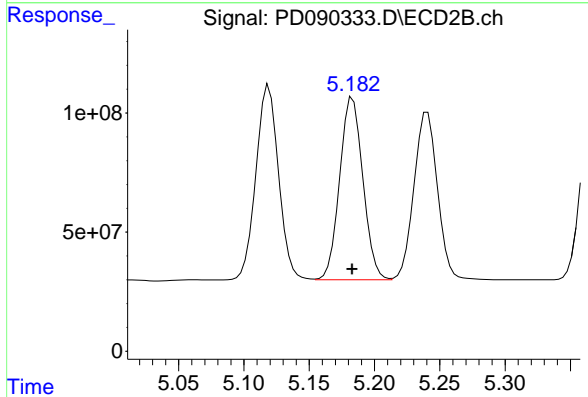
R.T.: 5.119 min
 Delta R.T.: 0.000 min
 Response: 984171821
 Conc: 26.22 ng/ml



#11 alpha-Chlordane

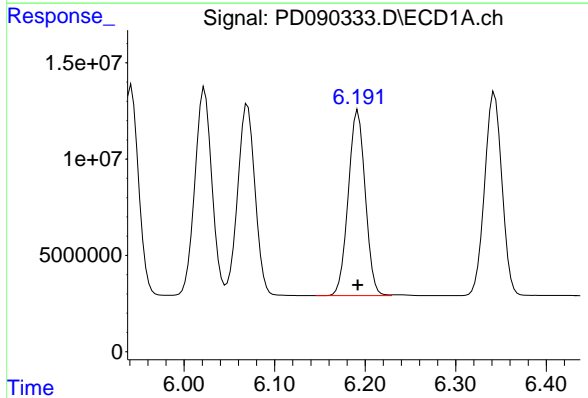
R.T.: 6.023 min
 Delta R.T.: 0.000 min
 Response: 140499730
 Conc: 25.07 ng/ml

Instrument :
 ECD_D
 ClientSampleId :



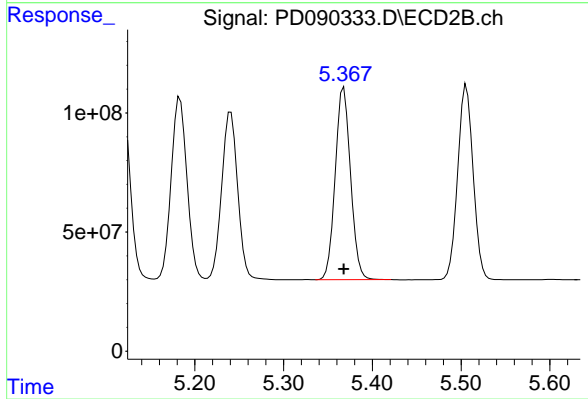
#11 alpha-Chlordane

R.T.: 5.183 min
 Delta R.T.: 0.000 min
 Response: 948136028
 Conc: 26.35 ng/ml



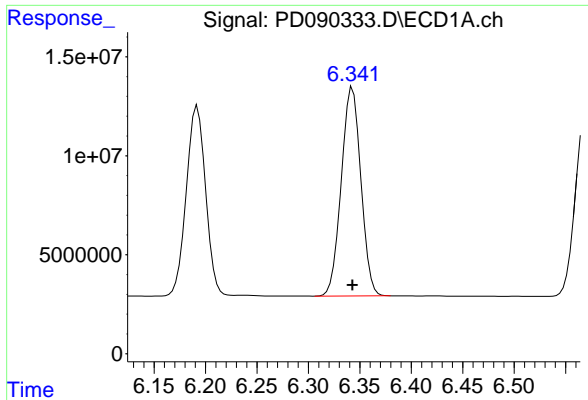
#12 4,4'-DDE

R.T.: 6.192 min
 Delta R.T.: 0.000 min
 Response: 125610676
 Conc: 24.49 ng/ml



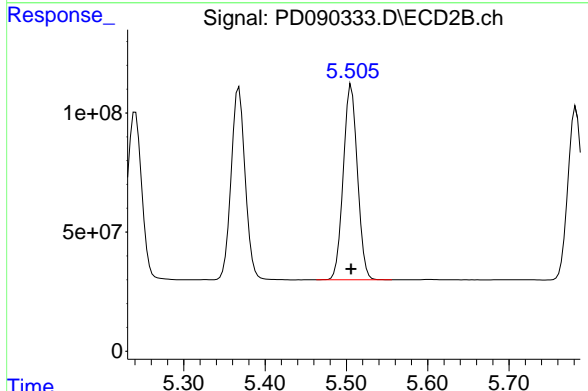
#12 4,4'-DDE

R.T.: 5.368 min
 Delta R.T.: 0.000 min
 Response: 969076092
 Conc: 26.42 ng/ml

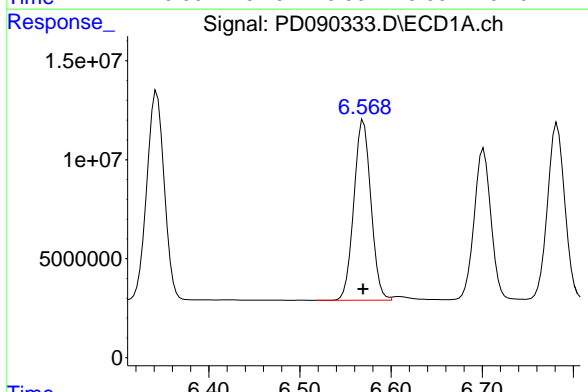


#13 Dieldrin
 R.T.: 6.343 min
 Delta R.T.: 0.000 min
 Response: 139796317
 Conc: 24.70 ng/ml

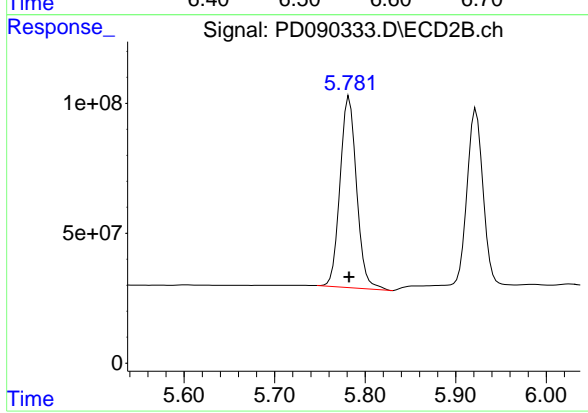
Instrument :
 ECD_D
 ClientSampleId :



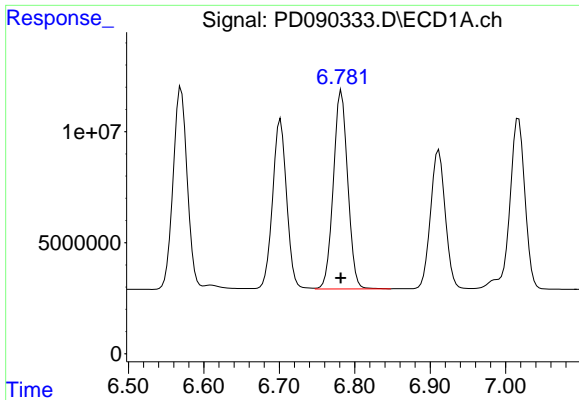
#13 Dieldrin
 R.T.: 5.506 min
 Delta R.T.: 0.000 min
 Response: 988187991
 Conc: 26.45 ng/ml



#14 Endrin
 R.T.: 6.570 min
 Delta R.T.: 0.000 min
 Response: 118315739
 Conc: 24.70 ng/ml



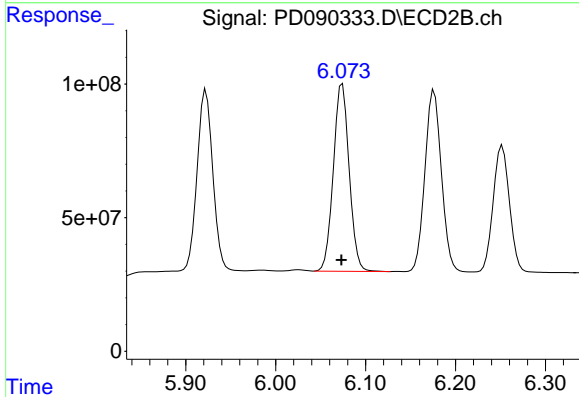
#14 Endrin
 R.T.: 5.782 min
 Delta R.T.: 0.000 min
 Response: 936258872
 Conc: 27.52 ng/ml



#15 Endosulfan II

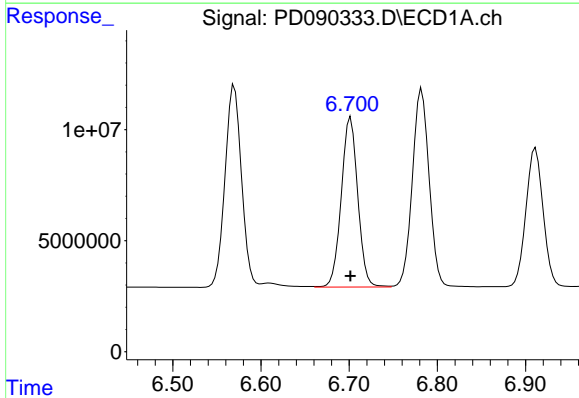
R.T.: 6.782 min
Delta R.T.: 0.000 min
Response: 118294825
Conc: 24.81 ng/ml

Instrument :
ECD_D
ClientSampleId :



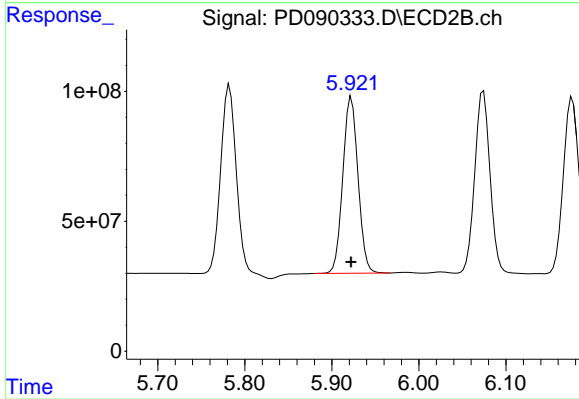
#15 Endosulfan II

R.T.: 6.074 min
Delta R.T.: 0.001 min
Response: 856725923
Conc: 26.54 ng/ml



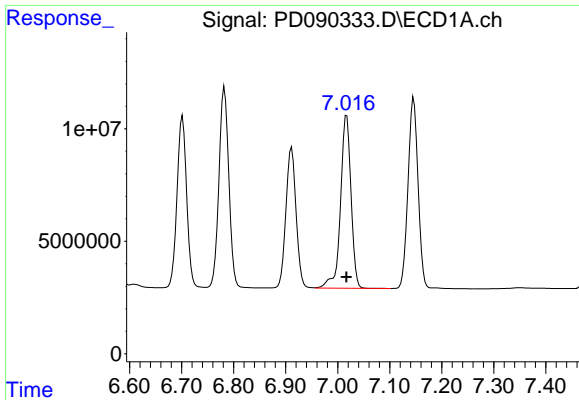
#16 4,4'-DDD

R.T.: 6.702 min
Delta R.T.: 0.000 min
Response: 99114690
Conc: 24.69 ng/ml



#16 4,4'-DDD

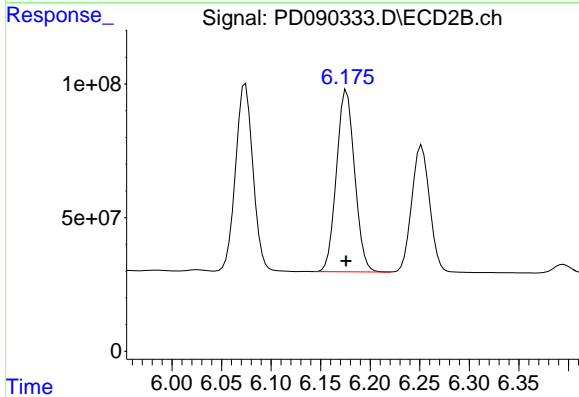
R.T.: 5.922 min
Delta R.T.: 0.000 min
Response: 822587646
Conc: 26.53 ng/ml



#17 4,4'-DDT

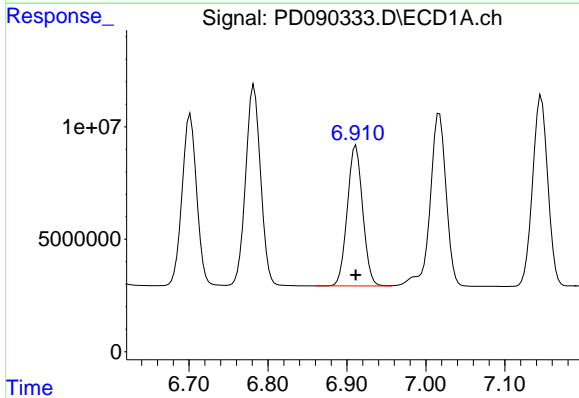
R.T.: 7.017 min
 Delta R.T.: 0.000 min
 Response: 107884441
 Conc: 24.67 ng/ml

Instrument :
 ECD_D
 ClientSampleId :



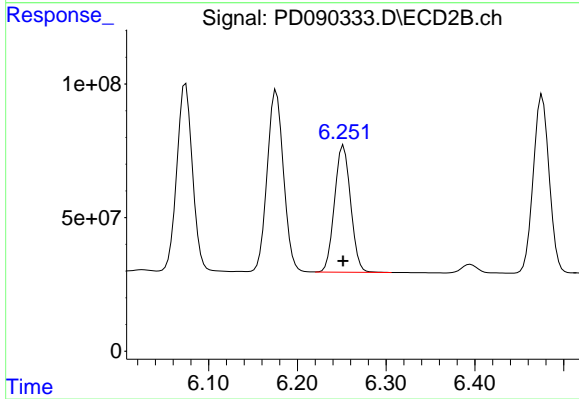
#17 4,4'-DDT

R.T.: 6.176 min
 Delta R.T.: 0.000 min
 Response: 868412878
 Conc: 26.12 ng/ml



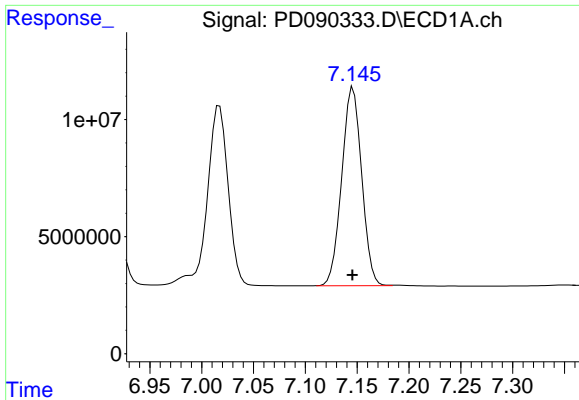
#18 Endrin aldehyde

R.T.: 6.912 min
 Delta R.T.: 0.000 min
 Response: 84815631
 Conc: 25.63 ng/ml



#18 Endrin aldehyde

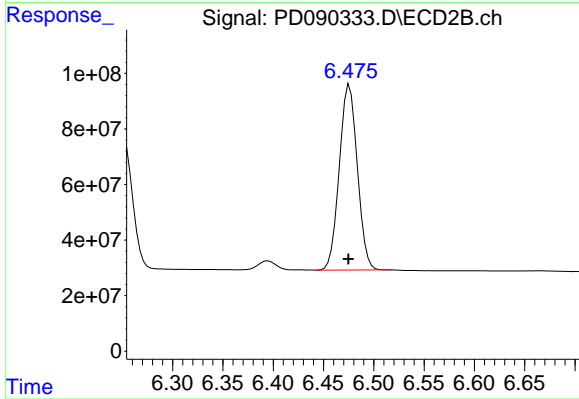
R.T.: 6.252 min
 Delta R.T.: 0.000 min
 Response: 597699980
 Conc: 26.37 ng/ml



#19 Endosulfan Sulfate

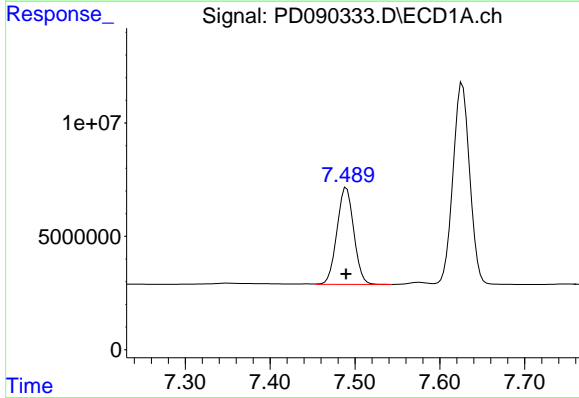
R.T.: 7.146 min
 Delta R.T.: 0.000 min
 Response: 113450456
 Conc: 25.49 ng/ml

Instrument :
 ECD_D
 ClientSampleId :



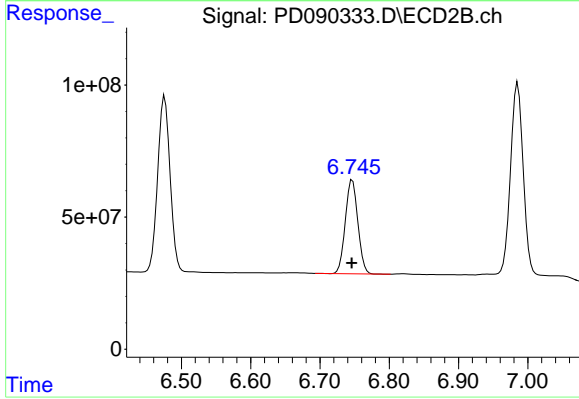
#19 Endosulfan Sulfate

R.T.: 6.476 min
 Delta R.T.: 0.000 min
 Response: 829702220
 Conc: 26.65 ng/ml



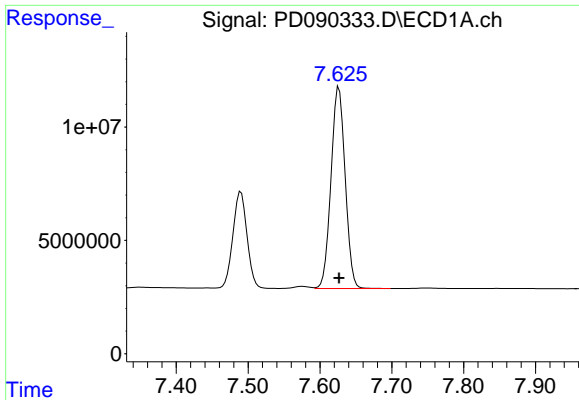
#20 Methoxychlor

R.T.: 7.490 min
 Delta R.T.: 0.000 min
 Response: 58886348
 Conc: 26.13 ng/ml



#20 Methoxychlor

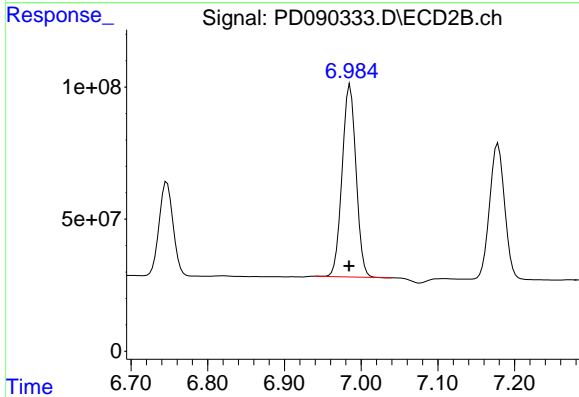
R.T.: 6.747 min
 Delta R.T.: 0.000 min
 Response: 447498155
 Conc: 27.00 ng/ml



#21 Endrin ketone

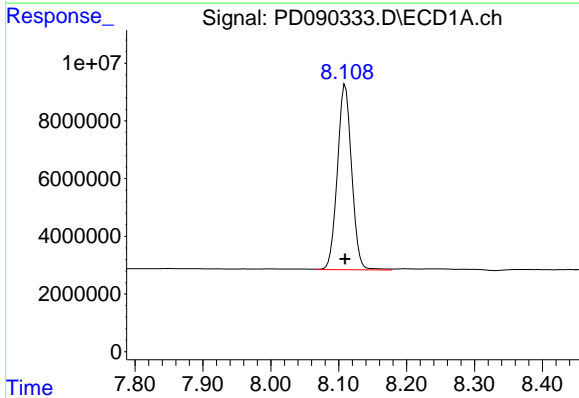
R.T.: 7.627 min
 Delta R.T.: 0.000 min
 Response: 121625773
 Conc: 25.37 ng/ml

Instrument :
 ECD_D
 ClientSampleId :



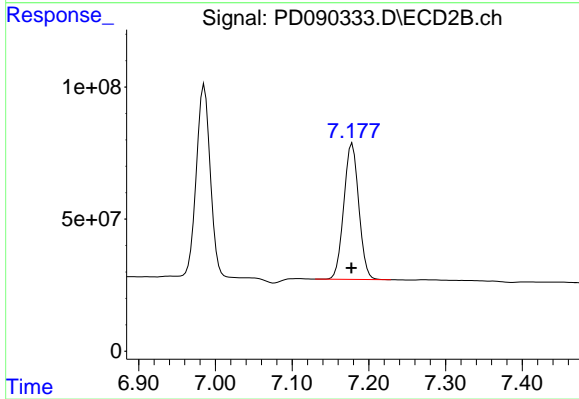
#21 Endrin ketone

R.T.: 6.985 min
 Delta R.T.: 0.001 min
 Response: 919994231
 Conc: 26.78 ng/ml



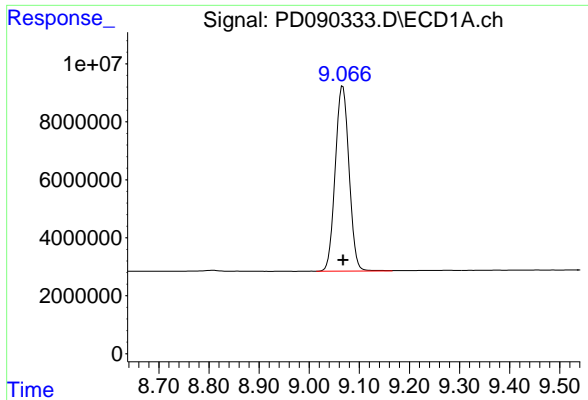
#22 Mirex

R.T.: 8.110 min
 Delta R.T.: 0.000 min
 Response: 93886990
 Conc: 26.91 ng/ml



#22 Mirex

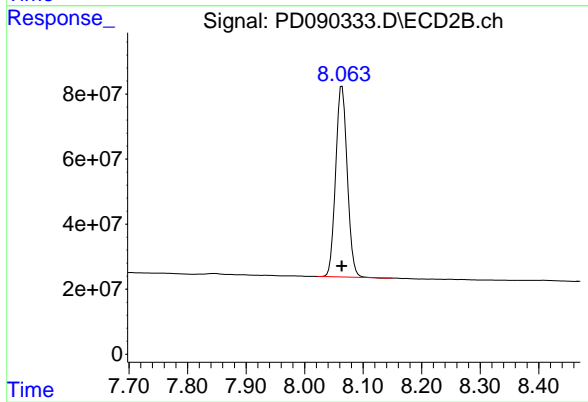
R.T.: 7.178 min
 Delta R.T.: 0.001 min
 Response: 701096687
 Conc: 27.04 ng/ml



#28 Decachlorobiphenyl

R.T.: 9.067 min
Delta R.T.: 0.000 min
Response: 121939831
Conc: 26.69 ng/ml

Instrument :
ECD_D
ClientSampleId :



#28 Decachlorobiphenyl

R.T.: 8.064 min
Delta R.T.: 0.000 min
Response: 805983061
Conc: 26.59 ng/ml