

Data Path : Z:\pestpcbsrv\HPCHEM1\ECD\_D\Data\PD091825\  
 Data File : PD090343.D  
 Signal(s) : Signal #1: ECD1A.ch Signal #2: ECD2B.ch  
 Acq On : 18 Sep 2025 13:26  
 Operator : AR\AJ  
 Sample : PTOXICC250  
 Misc :  
 ALS Vial : 18 Sample Multiplier: 1

Instrument :  
 ECD\_D  
 ClientSampleId :

Integration File signal 1: autoint1.e  
 Integration File signal 2: autoint2.e  
 Quant Time: Sep 19 05:45:53 2025  
 Quant Method : Z:\pestpcbsrv\HPCHEM1\ECD\_D\Method\DTX091825.M  
 Quant Title : GC Extractables  
 QLast Update : Fri Sep 19 05:45:01 2025  
 Response via : Initial Calibration  
 Integrator: ChemStation

Volume Inj. : 1 µl  
 Signal #1 Phase : ZB-MR1 Signal #2 Phase: ZB-MR2  
 Signal #1 Info : 30M x 0.32mm x 0. Signal #2 Info : 30M x 0.32mm x 0.25µm

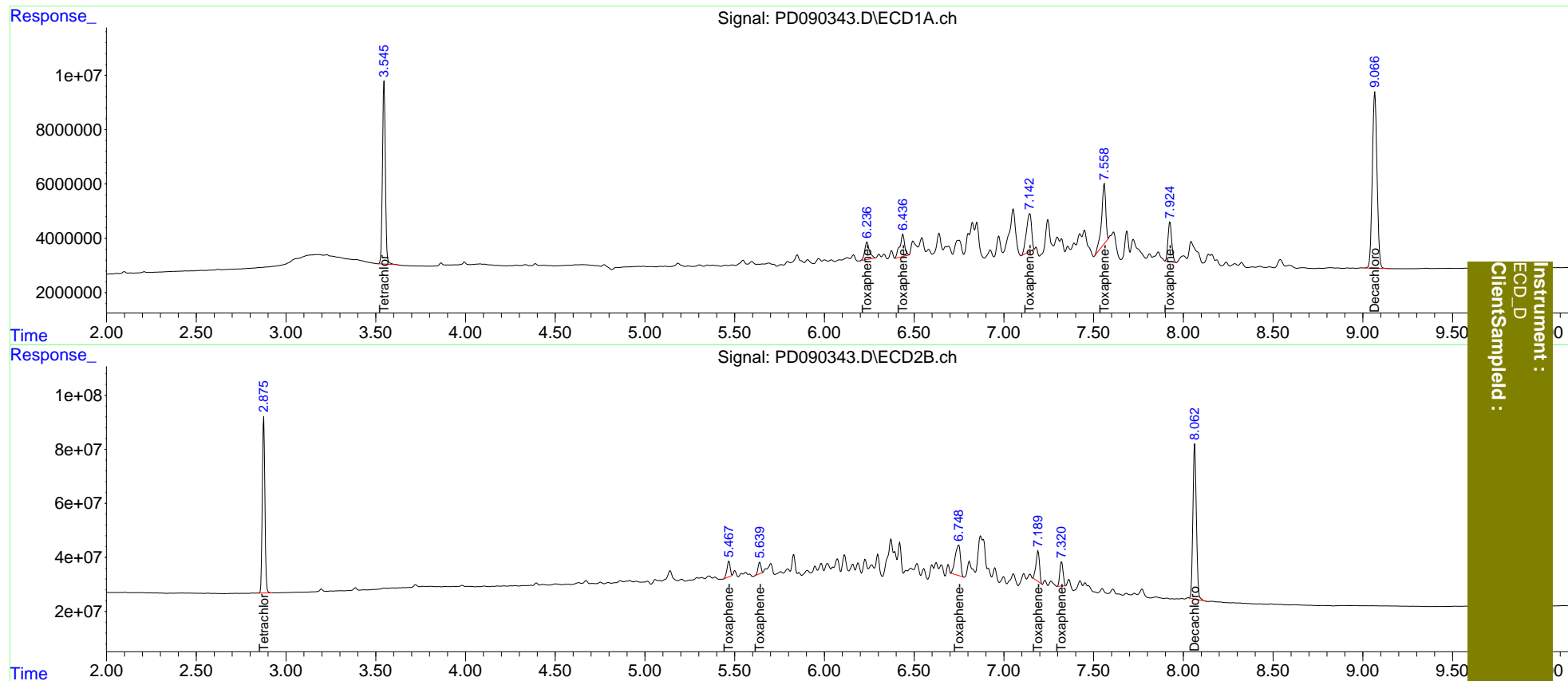
Compound	RT#1	RT#2	Resp#1	Resp#2	ng/ml	ng/ml
-----						
System Monitoring Compounds						
1) SA Tetrachlo...	3.547	2.876	75157389	658.2E6	24.407	25.000
7) SA Decachlor...	9.067	8.064	118.7E6	771.5E6	25.561	24.785
Target Compounds						
2) Toxaphene-1	6.238	5.468	11561879	70113090	260.472	252.219
3) Toxaphene-2	6.438	5.640	15581773	46636134	257.621	249.160
4) Toxaphene-3	7.144	6.749	27974605	229.3E6	246.131	243.814
5) Toxaphene-4	7.560	7.191	35559583	154.0E6	242.814	247.330
6) Toxaphene-5	7.925	7.322	21068252	114.0E6	252.616	237.919
-----						

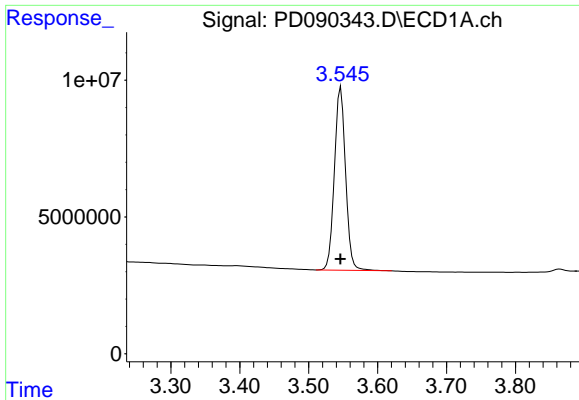
(f)=RT Delta > 1/2 Window (#)=Amounts differ by > 25% (m)=manual int.

Data Path : Z:\pestpcbsrv\HPCHEM1\ECD\_D\Data\PD091825\  
 Data File : PD090343.D  
 Signal(s) : Signal #1: ECD1A.ch Signal #2: ECD2B.ch  
 Acq On : 18 Sep 2025 13:26  
 Operator : AR\AJ  
 Sample : PTOXICC250  
 Misc :  
 ALS Vial : 18 Sample Multiplier: 1

Integration File signal 1: autoint1.e  
 Integration File signal 2: autoint2.e  
 Quant Time: Sep 19 05:45:53 2025  
 Quant Method : Z:\pestpcbsrv\HPCHEM1\ECD\_D\Method\DTX091825.M  
 Quant Title : GC Extractables  
 QLast Update : Fri Sep 19 05:45:01 2025  
 Response via : Initial Calibration  
 Integrator: ChemStation

Volume Inj. : 1 µl  
 Signal #1 Phase : ZB-MR1 Signal #2 Phase: ZB-MR2  
 Signal #1 Info : 30M x 0.32mm x 0. Signal #2 Info : 30M x 0.32mm x0.25µm

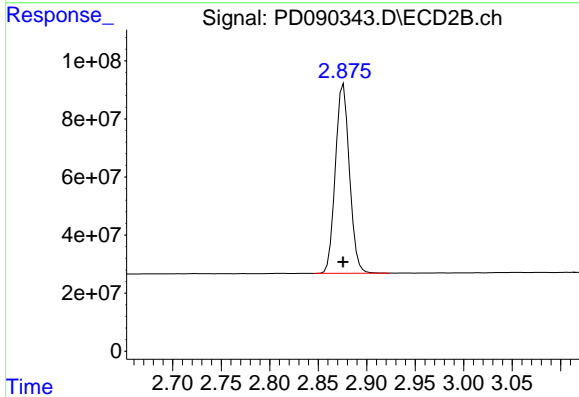




#1 Tetrachloro-m-xylene

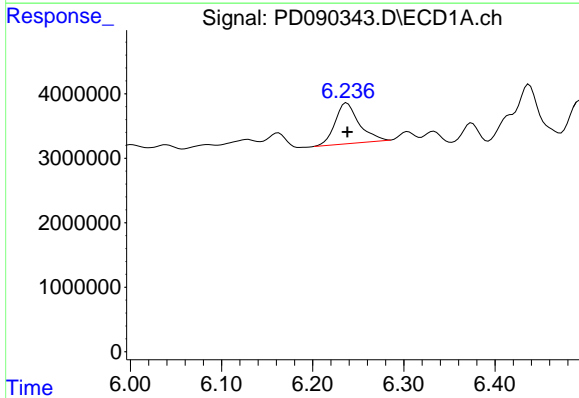
R.T.: 3.547 min  
 Delta R.T.: 0.000 min  
 Response: 75157389  
 Conc: 24.41 ng/ml

Instrument :  
 ECD\_D  
 ClientSampleId :



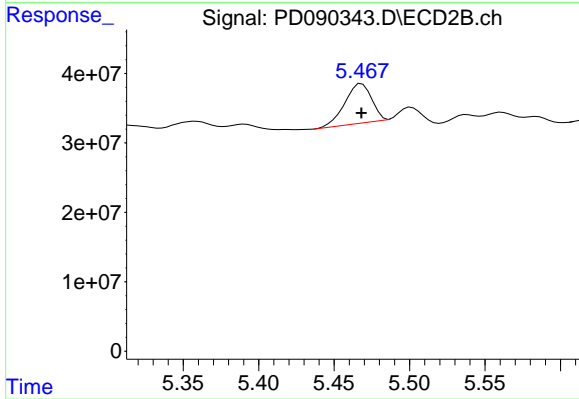
#1 Tetrachloro-m-xylene

R.T.: 2.876 min  
 Delta R.T.: 0.000 min  
 Response: 658174968  
 Conc: 25.00 ng/ml



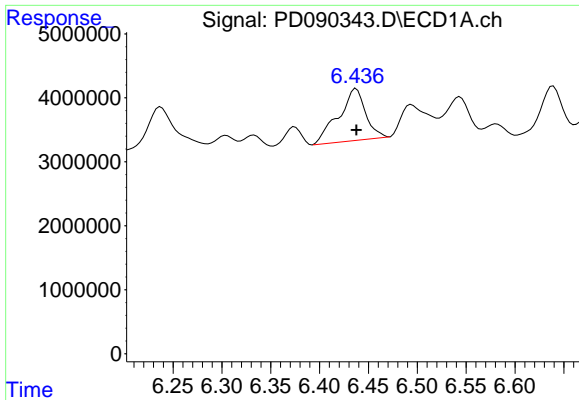
#2 Toxaphene-1

R.T.: 6.238 min  
 Delta R.T.: 0.000 min  
 Response: 11561879  
 Conc: 260.47 ng/ml



#2 Toxaphene-1

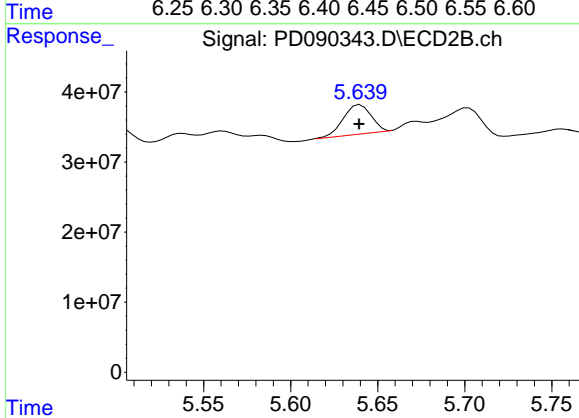
R.T.: 5.468 min  
 Delta R.T.: 0.000 min  
 Response: 70113090  
 Conc: 252.22 ng/ml



#3 Toxaphene-2

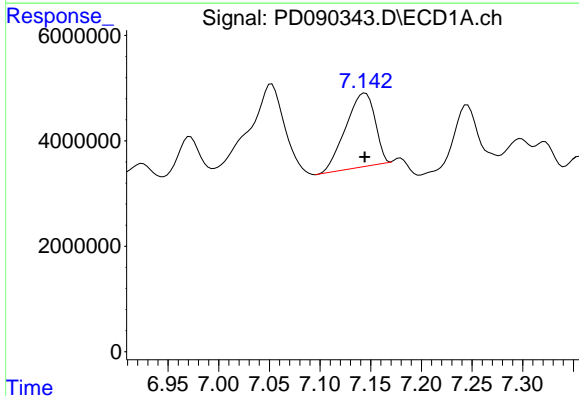
R.T.: 6.438 min  
 Delta R.T.: 0.000 min  
 Response: 15581773  
 Conc: 257.62 ng/ml

Instrument :  
 ECD\_D  
 ClientSampleId :



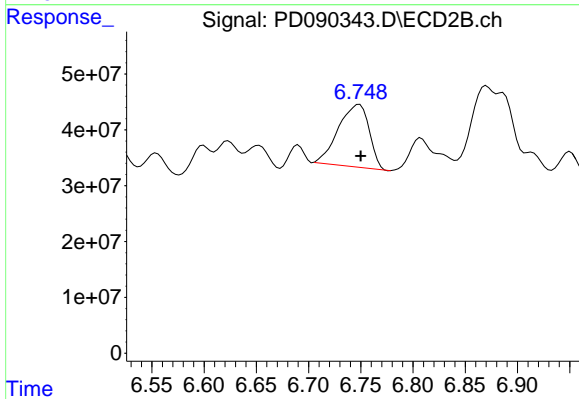
#3 Toxaphene-2

R.T.: 5.640 min  
 Delta R.T.: 0.000 min  
 Response: 46636134  
 Conc: 249.16 ng/ml



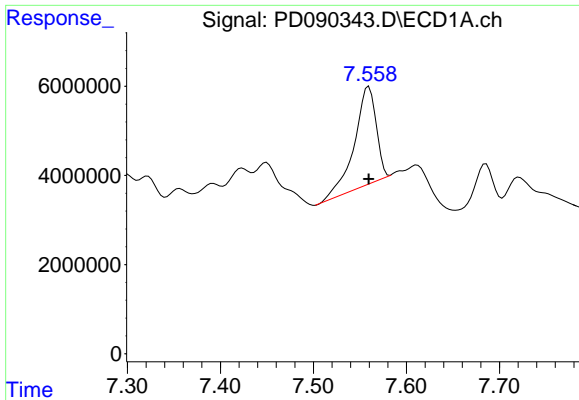
#4 Toxaphene-3

R.T.: 7.144 min  
 Delta R.T.: 0.000 min  
 Response: 27974605  
 Conc: 246.13 ng/ml



#4 Toxaphene-3

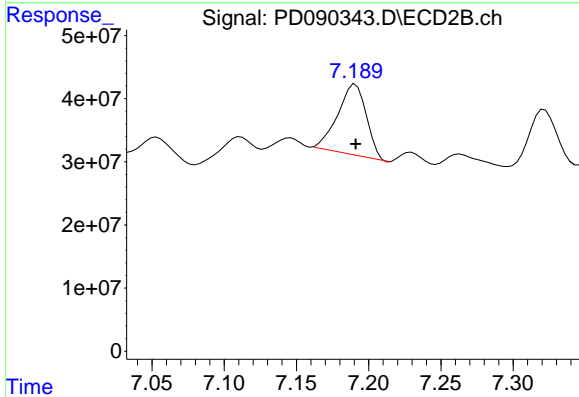
R.T.: 6.749 min  
 Delta R.T.: -0.001 min  
 Response: 229330121  
 Conc: 243.81 ng/ml



#5 Toxaphene-4

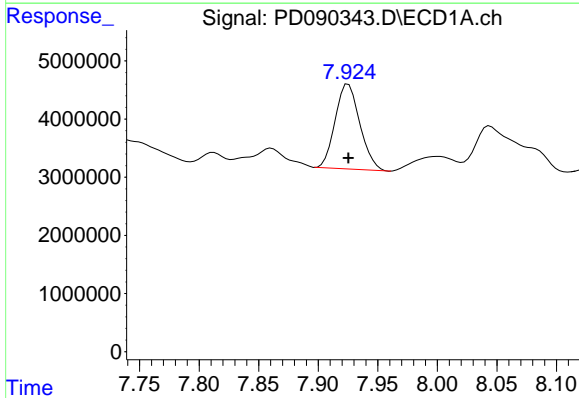
R.T.: 7.560 min  
 Delta R.T.: 0.000 min  
 Response: 35559583  
 Conc: 242.81 ng/ml

Instrument :  
 ECD\_D  
 ClientSampleId :



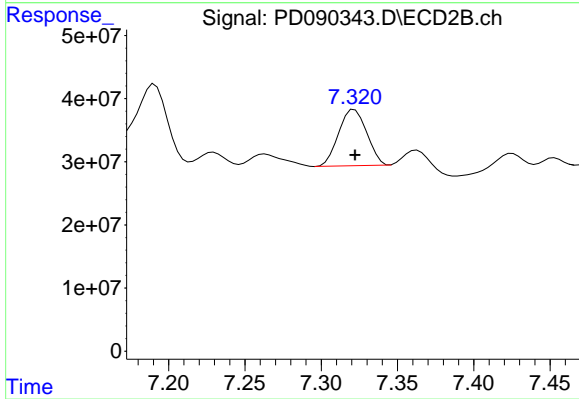
#5 Toxaphene-4

R.T.: 7.191 min  
 Delta R.T.: 0.000 min  
 Response: 154029149  
 Conc: 247.33 ng/ml



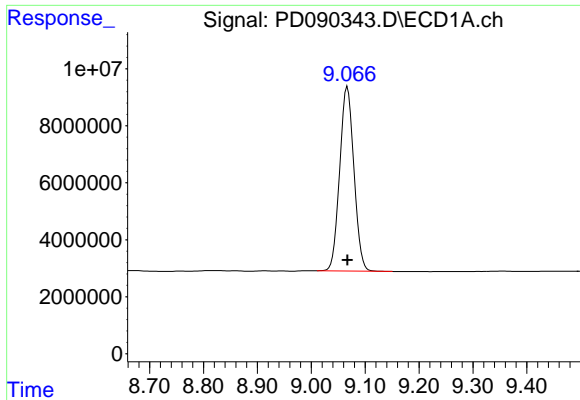
#6 Toxaphene-5

R.T.: 7.925 min  
 Delta R.T.: 0.000 min  
 Response: 21068252  
 Conc: 252.62 ng/ml



#6 Toxaphene-5

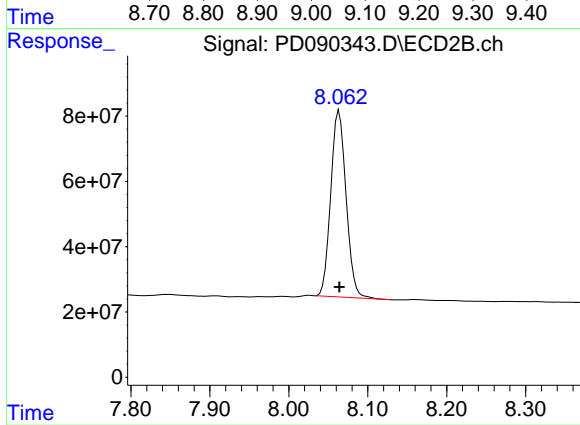
R.T.: 7.322 min  
 Delta R.T.: 0.000 min  
 Response: 113978103  
 Conc: 237.92 ng/ml



#7 Decachlorobiphenyl

R.T.: 9.067 min  
Delta R.T.: 0.000 min  
Response: 118743586  
Conc: 25.56 ng/ml

Instrument :  
ECD\_D  
ClientSampleId :



#7 Decachlorobiphenyl

R.T.: 8.064 min  
Delta R.T.: 0.000 min  
Response: 771483315  
Conc: 24.79 ng/ml