

Data Path : Z:\pestpcbsrv\HPCHEM1\ECD\_D\Data\PD091919\  
 Data File : PD054772.D  
 Signal(s) : Signal #1: ECD1A.CH Signal #2: ECD2B.CH  
 Acq On : 19 Sep 2019 18:20  
 Operator : SG\AJ  
 Sample : K4890-18  
 Misc :  
 ALS Vial : 32 Sample Multiplier: 1

**Instrument :**  
 ECD\_D  
**ClientSampled :**  
 C0AT2

**Manual Integrations**  
**APPROVED**  
 Ankita  
 9/20/2019 4:28:34 PM

Integration File signal 1: autoint1.e  
 Integration File signal 2: autoint2.e  
 Quant Time: Sep 20 01:18:58 2019  
 Quant Method : Z:\pestpcbsrv\HPCHEM1\ECD\_D\Method\PD091819CLP.M  
 Quant Title : GC Extractables  
 QLast Update : Wed Sep 18 17:43:20 2019  
 Response via : Initial Calibration  
 Integrator: ChemStation 6890 Scale Mode: Large solvent peaks clipped

Volume Inj. : 1 µl  
 Signal #1 Phase : ZB-MR2 Signal #2 Phase: ZB-MR1  
 Signal #1 Info : 30M x 0.32mm x0.2 Signal #2 Info : 30M x 0.32mm x 0.50µm

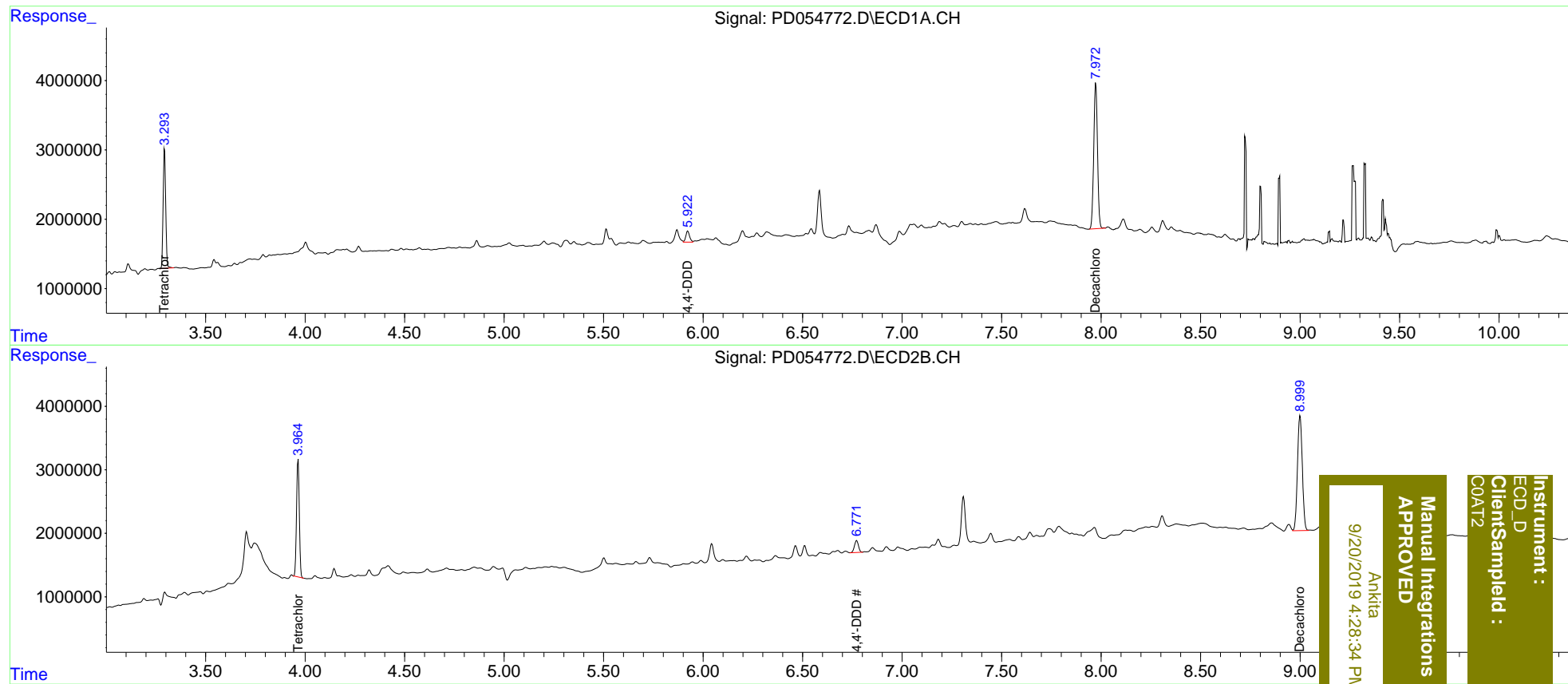
Compound	RT#1	RT#2	Resp#1	Resp#2	ng/ml	ng/ml
-----						
System Monitoring Compounds						
1) SA Tetrachlo...	3.294	3.965	15328389	17890070	22.692	21.931
27) SA Decachlor...	7.974	8.999	27480723	30693401	31.183	29.849m
Target Compounds						
16) A 4,4'-DDD	5.922	6.771	2157808	2669695	2.786m	2.812m
-----						

(f)=RT Delta > 1/2 Window (#)=Amounts differ by > 25% (m)=manual int.

Data Path : Z:\pestpcbsrv\HPCHEM1\ECD\_D\Data\PD091919\  
 Data File : PD054772.D  
 Signal(s) : Signal #1: ECD1A.CH Signal #2: ECD2B.CH  
 Acq On : 19 Sep 2019 18:20  
 Operator : SG\AJ  
 Sample : K4890-18  
 Misc :  
 ALS Vial : 32 Sample Multiplier: 1

Integration File signal 1: autoint1.e  
 Integration File signal 2: autoint2.e  
 Quant Time: Sep 20 01:18:58 2019  
 Quant Method : Z:\pestpcbsrv\HPCHEM1\ECD\_D\Method\PD091819CLP.M  
 Quant Title : GC Extractables  
 QLast Update : Wed Sep 18 17:43:20 2019  
 Response via : Initial Calibration  
 Integrator: ChemStation 6890 Scale Mode: Large solvent peaks clipped

Volume Inj. : 1 µl  
 Signal #1 Phase : ZB-MR2 Signal #2 Phase: ZB-MR1  
 Signal #1 Info : 30M x 0.32mm x0.2 Signal #2 Info : 30M x 0.32mm x 0.50µm



Instrument :  
 ECD\_D  
 Client Sample Id :  
 COAT2

Manual Integrations  
 APPROVED  
 Ankita  
 9/20/2019 4:28:34 PM