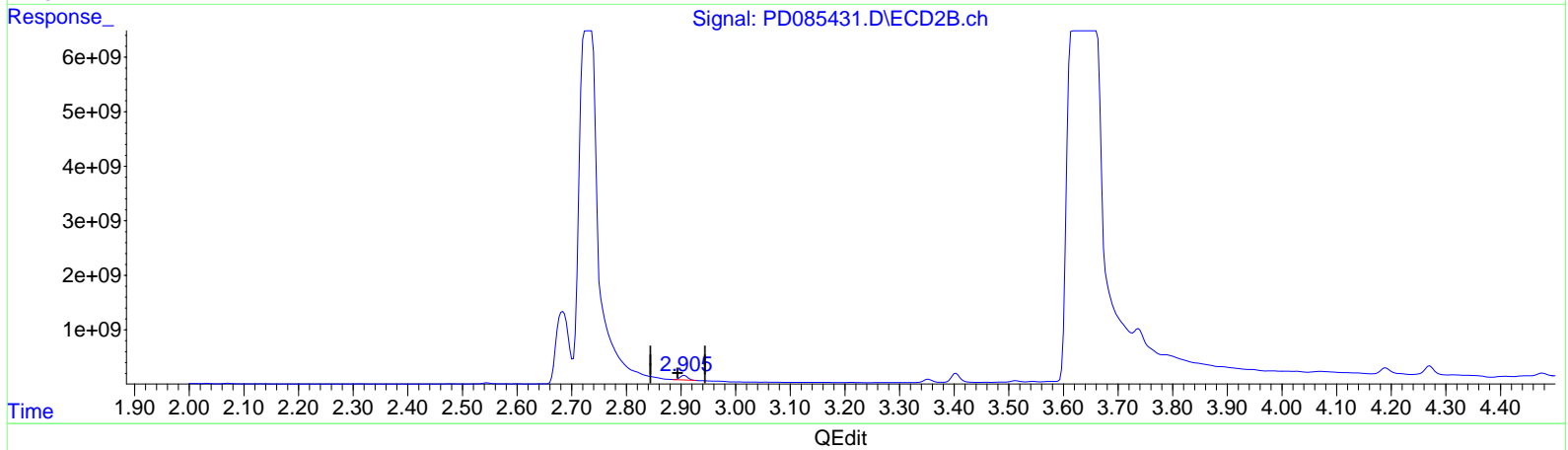
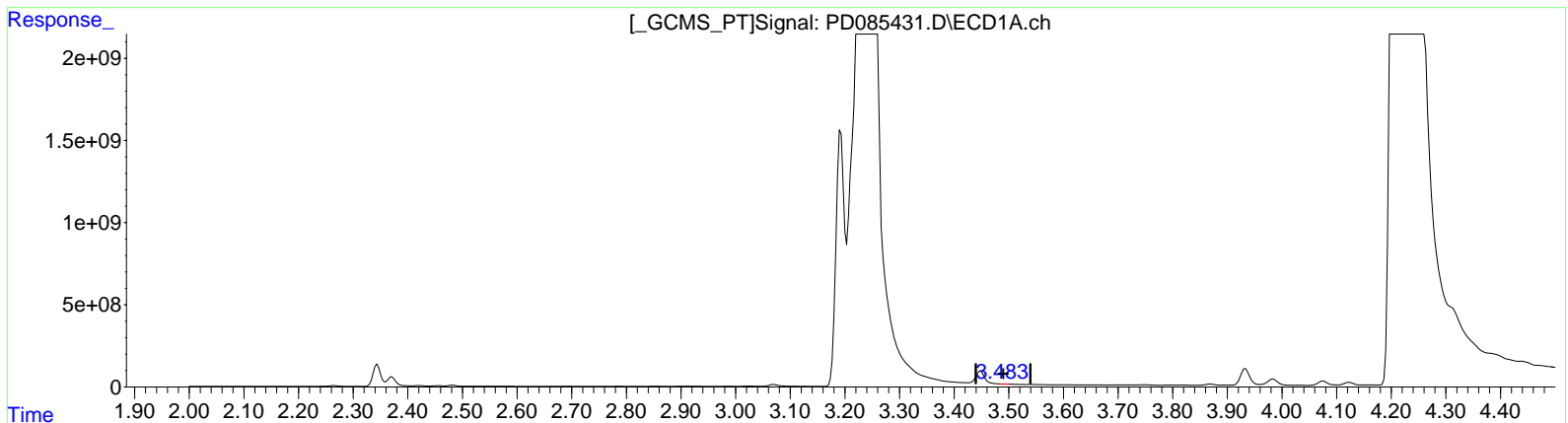


Data Path : Z:\pestpcbsrv\HPCHEM1\ECD_D\Data\PD092024\
 Data File : PD085431.D
 Signal(s) : Signal #1: ECD1A.ch Signal #2: ECD2B.ch
 Acq On : 20 Sep 2024 13:49
 Operator : AR\AJ
 Sample : P3910-19DL 3X
 Misc :
 ALS Vial : 4 Sample Multiplier: 1

Integration File signal 1: autoint1.e
 Integration File signal 2: autoint2.e
 Quant Time: Sep 21 01:31:32 2024
 Quant Method : Z:\pestpcbsrv\HPCHEM1\ECD_D\Method\PD091924CLP.M
 Quant Title : GC Extractables
 QLast Update : Fri Sep 20 05:48:22 2024
 Response via : Initial Calibration
 Integrator: ChemStation

Volume Inj. : 1 µl
 Signal #1 Phase : ZB-MR1 Signal #2 Phase: ZB-MR2
 Signal #1 Info : 30M x 0.32mm x0.5 Signal #2 Info : 30M x 0.32mm x 0.25µm



(1) Tetrachloro-m-xylene (SA)
 3.483min 6.957 ng/ml m
 response 8424719

(1) Tetrachloro-m-xylene #2 (SA)
 2.905min 216.857 ng/ml m
 response 819688058