

Data Path : Z:\pestpcbsrv\HPCHEM1\ECD\_D\Data\PD092024\  
 Data File : PD085480.D  
 Signal(s) : Signal #1: ECD1A.ch Signal #2: ECD2B.ch  
 Acq On : 21 Sep 2024 03:31  
 Operator : AR\AJ  
 Sample : P3927-15  
 Misc :  
 ALS Vial : 48 Sample Multiplier: 1

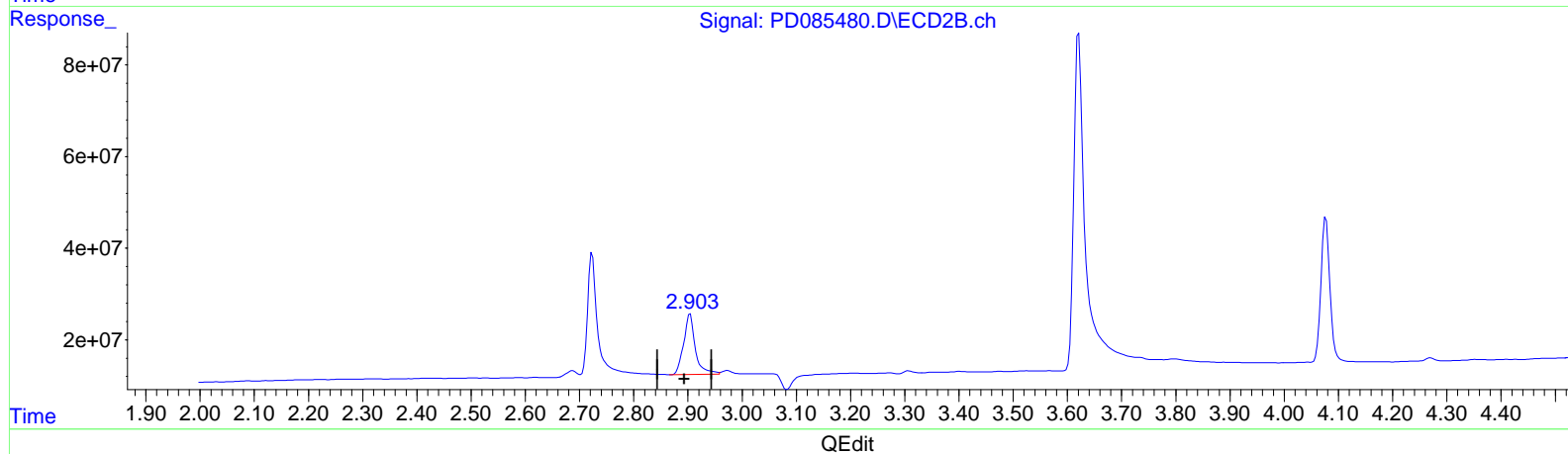
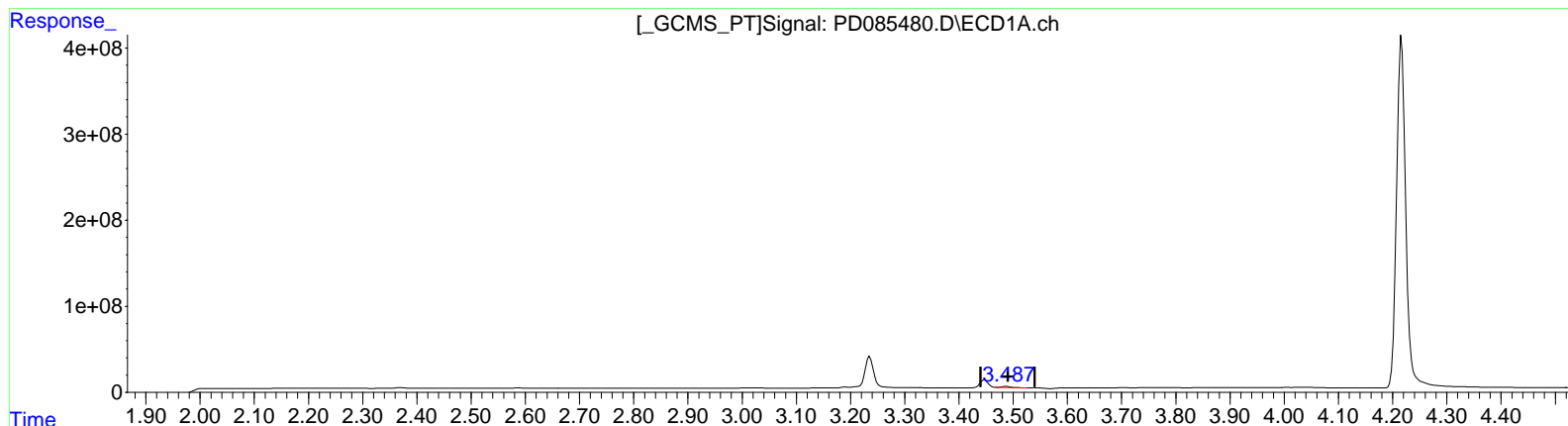
Instrument :  
 ECD\_D  
 ClientSampleId :  
 DD2D2

Manual Integrations APPROVED

Reviewed By : Abdul Mirza 09/23/2024  
 Supervised By : Ankita Jodhani 09/23/2024

Integration File signal 1: autoint1.e  
 Integration File signal 2: autoint2.e  
 Quant Time: Oct 01 01:45:37 2024  
 Quant Method : Z:\pestpcbsrv\HPCHEM1\ECD\_D\Method\PD091924CLP.M  
 Quant Title : GC Extractables  
 QLast Update : Fri Sep 20 05:48:22 2024  
 Response via : Initial Calibration  
 Integrator: ChemStation

Volume Inj. : 1 µl  
 Signal #1 Phase : ZB-MR1 Signal #2 Phase: ZB-MR2  
 Signal #1 Info : 30M x 0.32mm x 0.5 Signal #2 Info : 30M x 0.32mm x 0.25µm



(1) Tetrachloro-m-xylene (SA)  
 3.488min 9.663 ng/ml  
 response 11701993

(1) Tetrachloro-m-xylene #2 (SA)  
 2.904min 52.355 ng/ml  
 response 197894931

Data Path : Z:\pestpcbsrv\HPCHEM1\ECD\_D\Data\PD092024\  
 Data File : PD085480.D  
 Signal(s) : Signal #1: ECD1A.ch Signal #2: ECD2B.ch  
 Acq On : 21 Sep 2024 03:31  
 Operator : AR\AJ  
 Sample : P3927-15  
 Misc :  
 ALS Vial : 48 Sample Multiplier: 1

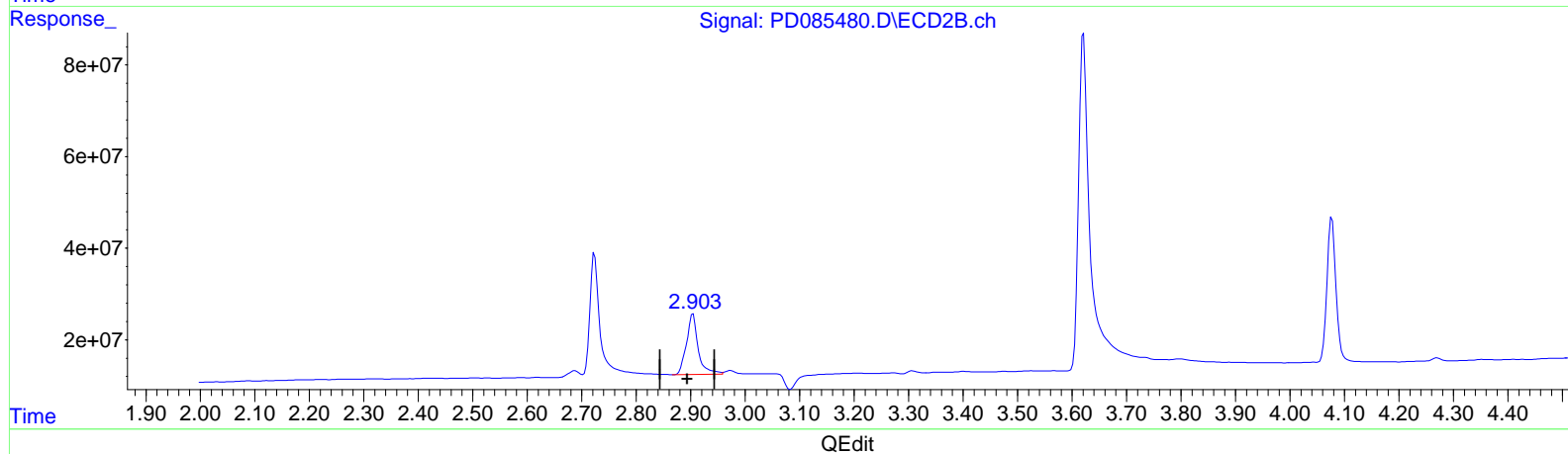
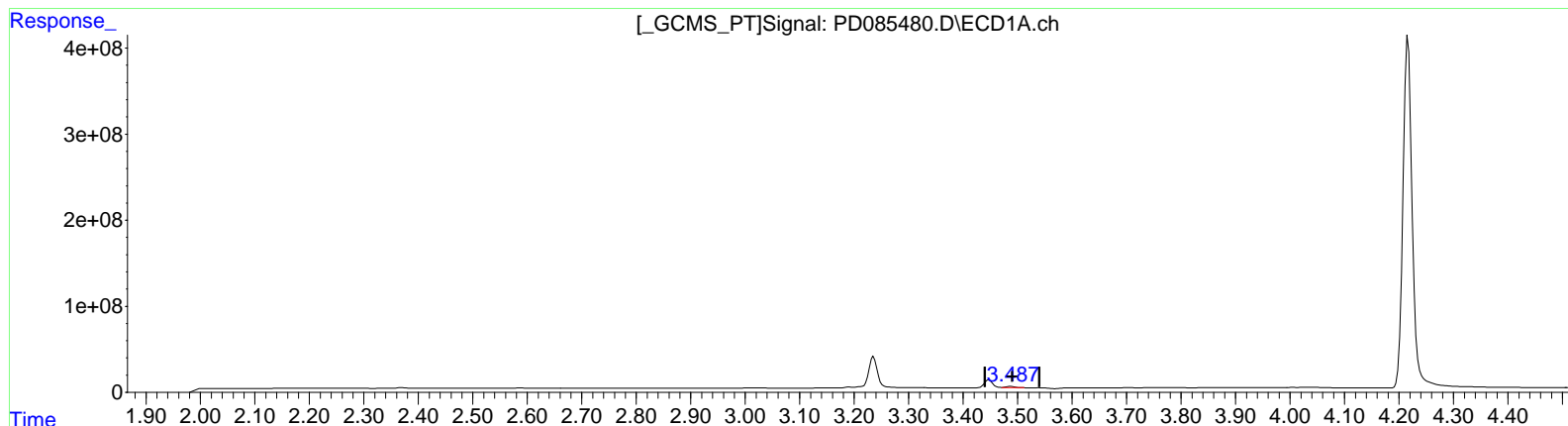
Instrument :  
 ECD\_D  
 ClientSampleId :  
 DD2D2

Manual Integrations APPROVED

Reviewed By : Abdul Mirza 09/23/2024  
 Supervised By : Ankita Jodhani 09/23/2024

Integration File signal 1: autoint1.e  
 Integration File signal 2: autoint2.e  
 Quant Time: Sep 21 06:15:05 2024  
 Quant Method : Z:\pestpcbsrv\HPCHEM1\ECD\_D\Method\PD091924CLP.M  
 Quant Title : GC Extractables  
 QLast Update : Fri Sep 20 05:48:22 2024  
 Response via : Initial Calibration  
 Integrator: ChemStation

Volume Inj. : 1 µl  
 Signal #1 Phase : ZB-MR1 Signal #2 Phase: ZB-MR2  
 Signal #1 Info : 30M x 0.32mm x 0.5 Signal #2 Info : 30M x 0.32mm x 0.25µm



(1) Tetrachloro-m-xylene (SA)  
 3.487min 11.539 ng/ml m  
 response 13973694

(1) Tetrachloro-m-xylene #2 (SA)  
 2.904min 52.355 ng/ml  
 response 197894931

Data Path : Z:\pestpcbsrv\HPCHEM1\ECD\_D\Data\PD092024\  
 Data File : PD085480.D  
 Signal(s) : Signal #1: ECD1A.ch Signal #2: ECD2B.ch  
 Acq On : 21 Sep 2024 03:31  
 Operator : AR\AJ  
 Sample : P3927-15  
 Misc :  
 ALS Vial : 48 Sample Multiplier: 1

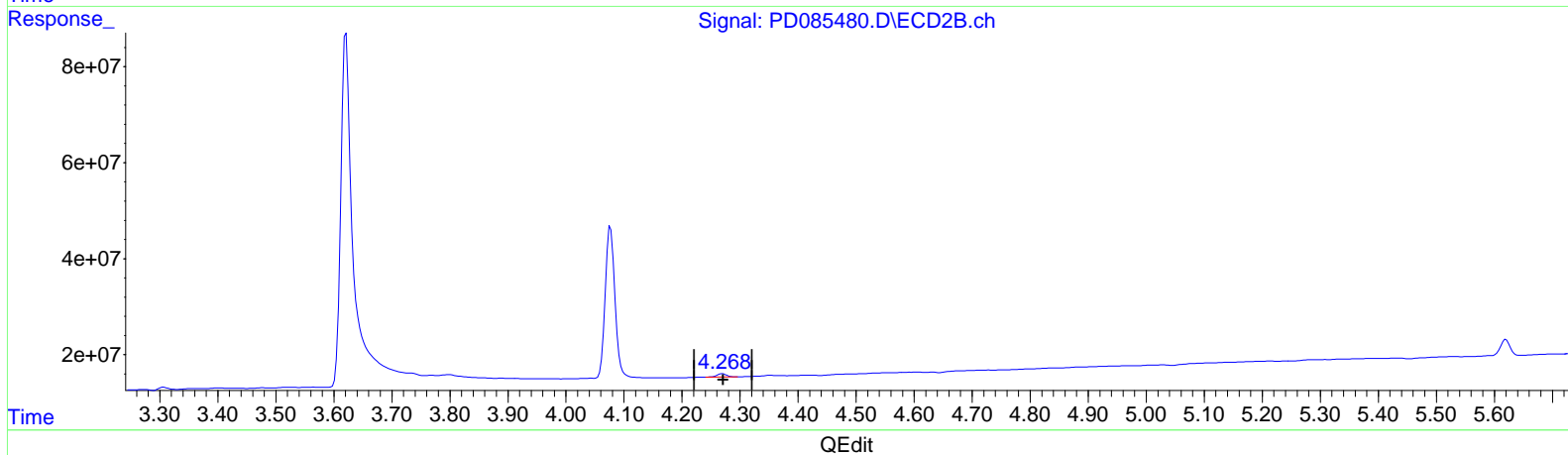
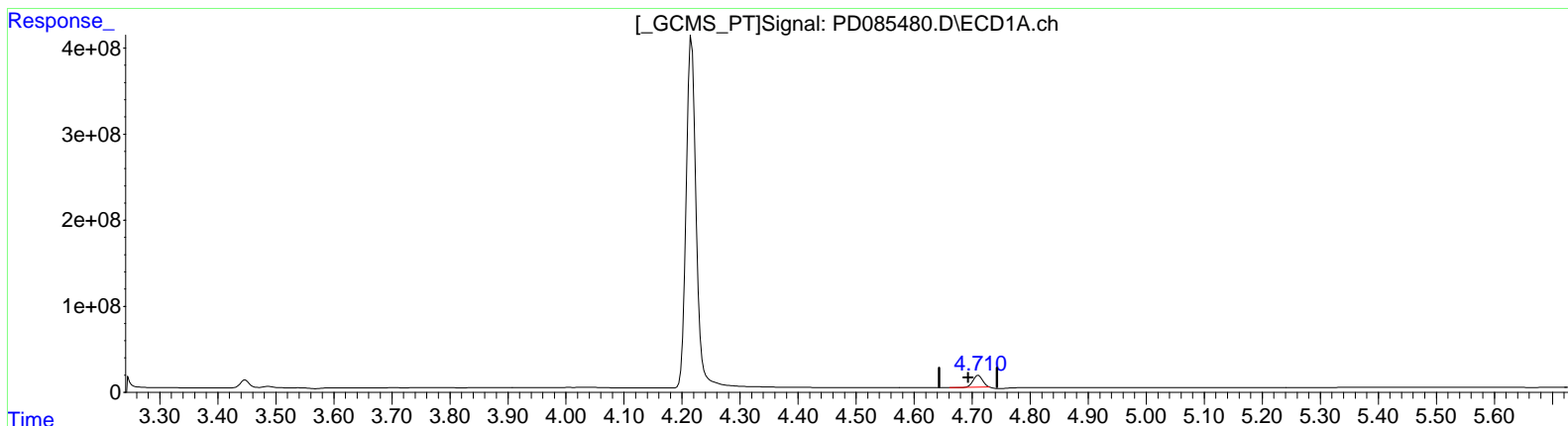
**Instrument :**  
 ECD\_D  
**ClientSampleId :**  
 DDCD2

**Manual IntegrationsAPPROVED**

Reviewed By :Abdul Mirza 09/23/2024  
 Supervised By :Ankita Jodhani 09/23/2024

Integration File signal 1: autoint1.e  
 Integration File signal 2: autoint2.e  
 Quant Time: Oct 01 01:45:37 2024  
 Quant Method : Z:\pestpcbsrv\HPCHEM1\ECD\_D\Method\PD091924CLP.M  
 Quant Title : GC Extractables  
 QLast Update : Fri Sep 20 05:48:22 2024  
 Response via : Initial Calibration  
 Integrator: ChemStation

Volume Inj. : 1 µl  
 Signal #1 Phase : ZB-MR1 Signal #2 Phase: ZB-MR2  
 Signal #1 Info : 30M x 0.32mm x0.5 Signal #2 Info : 30M x 0.32mm x 0.25µm



(7) delta-BHC (B)  
 4.711min 70.381 ng/ml  
 response 160441706

(7) delta-BHC #2 (B)  
 4.270min 1.465 ng/ml  
 response 7717314

Data Path : Z:\pestpcbsrv\HPCHEM1\ECD\_D\Data\PD092024\  
 Data File : PD085480.D  
 Signal(s) : Signal #1: ECD1A.ch Signal #2: ECD2B.ch  
 Acq On : 21 Sep 2024 03:31  
 Operator : AR\AJ  
 Sample : P3927-15  
 Misc :  
 ALS Vial : 48 Sample Multiplier: 1

**Instrument :**

ECD\_D

**ClientSampleId :**

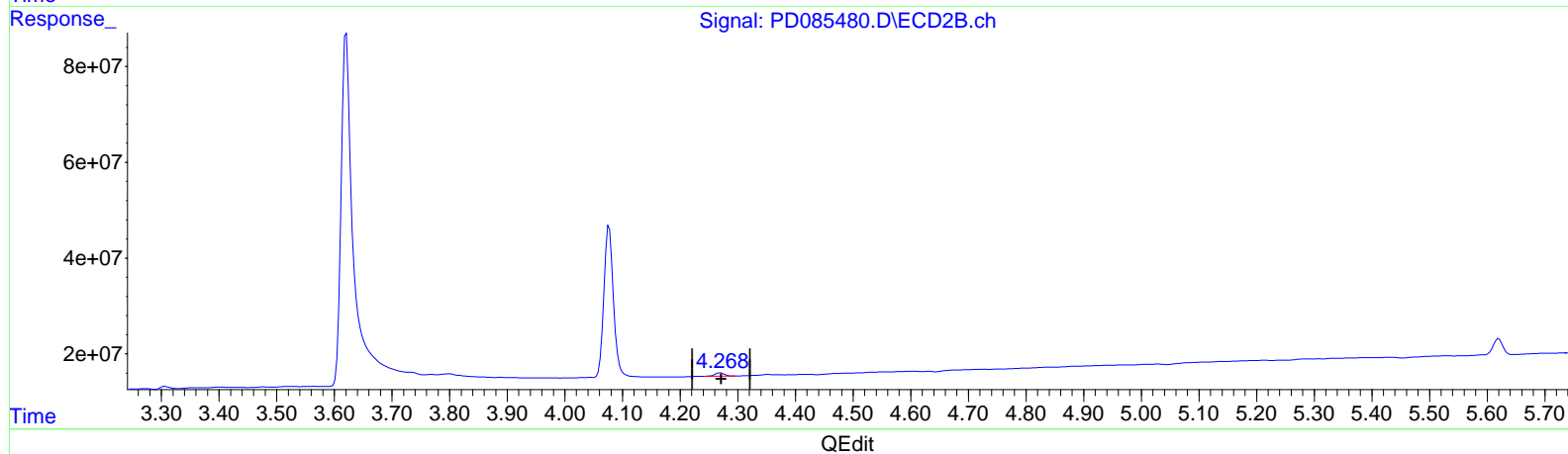
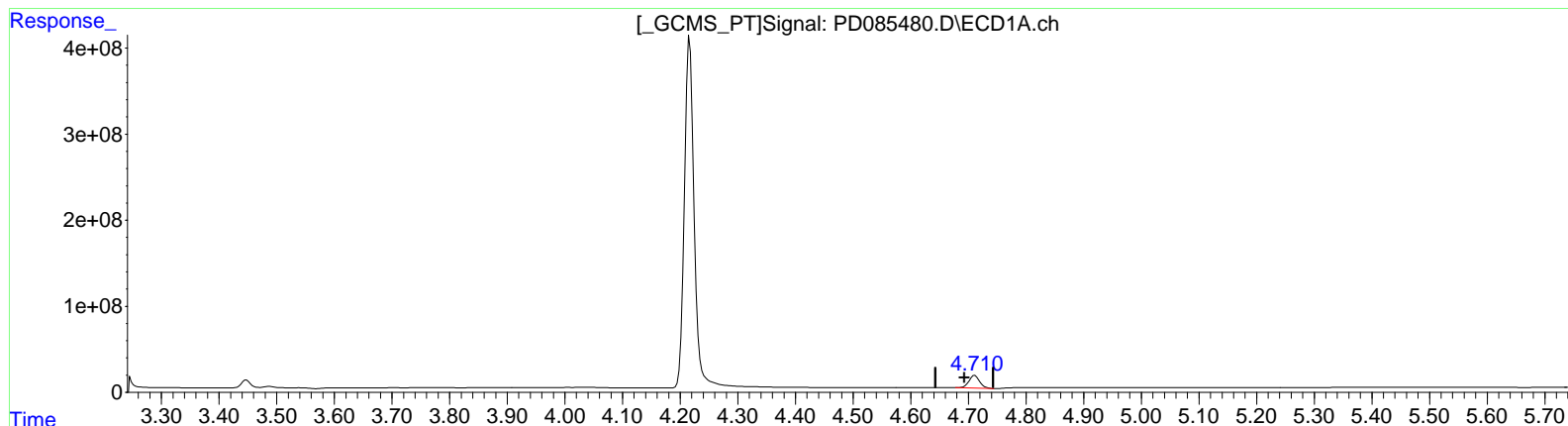
DDCD2

**Manual IntegrationsAPPROVED**

Reviewed By :Abdul Mirza 09/23/2024  
 Supervised By :Ankita Jodhani 09/23/2024

Integration File signal 1: autoint1.e  
 Integration File signal 2: autoint2.e  
 Quant Time: Sep 21 06:15:05 2024  
 Quant Method : Z:\pestpcbsrv\HPCHEM1\ECD\_D\Method\PD091924CLP.M  
 Quant Title : GC Extractables  
 QLast Update : Fri Sep 20 05:48:22 2024  
 Response via : Initial Calibration  
 Integrator: ChemStation

Volume Inj. : 1 µl  
 Signal #1 Phase : ZB-MR1 Signal #2 Phase: ZB-MR2  
 Signal #1 Info : 30M x 0.32mm x0.5 Signal #2 Info : 30M x 0.32mm x 0.25µm



(7) delta-BHC (B)  
 4.710min 84.868 ng/ml m  
 response 193467024

(7) delta-BHC #2 (B)  
 4.270min 1.465 ng/ml  
 response 7717314