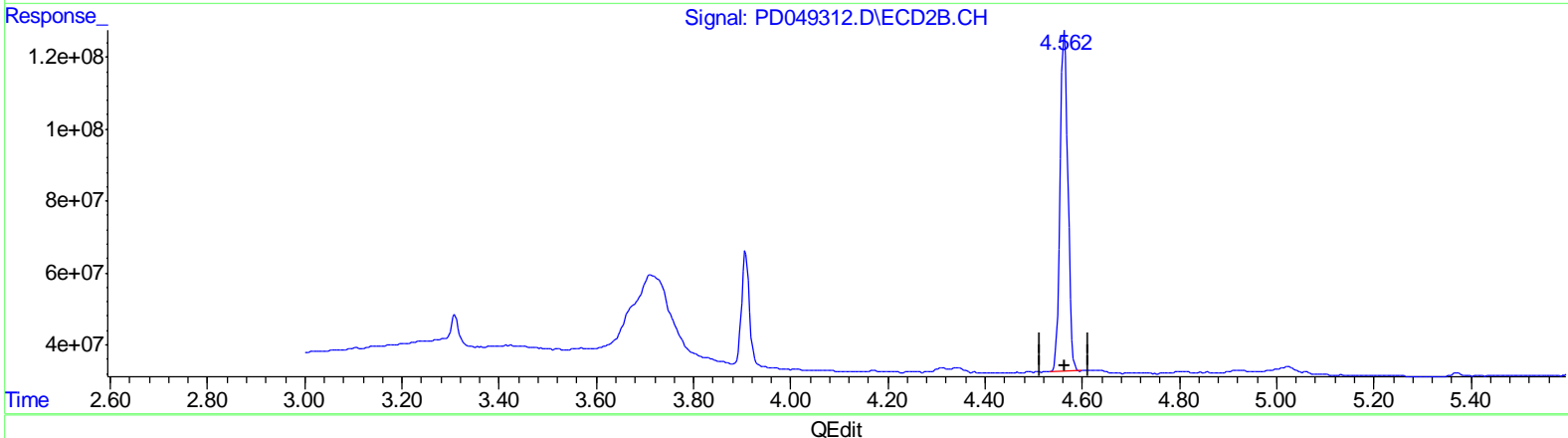
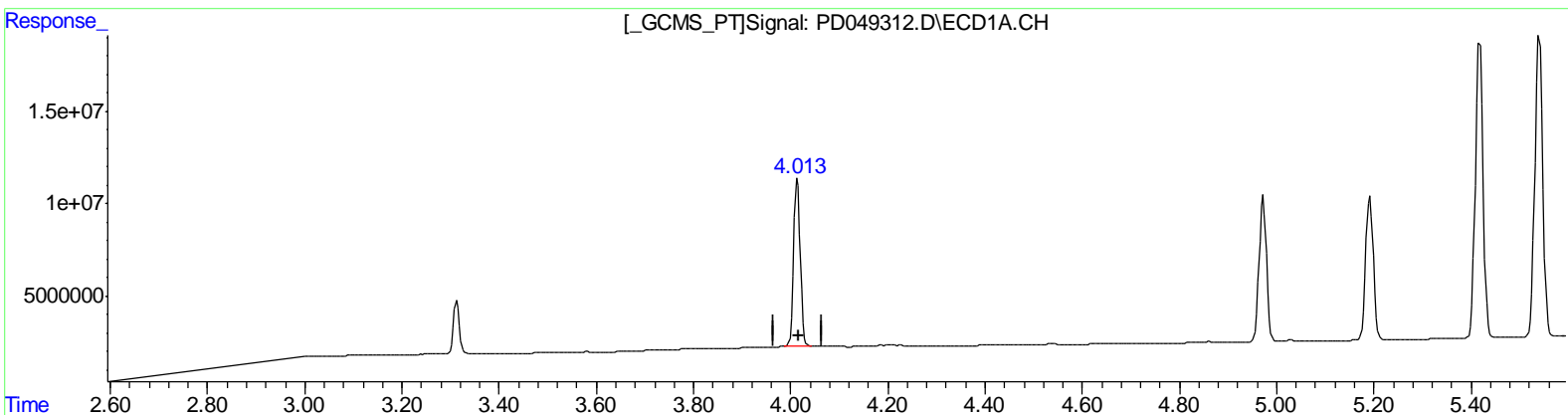


Data Path : Z:\pestpcbsrv\HPCHEM1\ECD D\Data\PD092118\
 Data File : PD049312.D
 Signal(s) : Signal #1: ECD1A.CH Signal #2: ECD2B.CH
 Acq On : 21 Sep 2018 9:44
 Operator : AJ\SJ
 Sample : PB113079BS
 Misc :
 ALS Vial : 8 Sample Multiplier: 1

Integration File signal 1: autoint1.e
 Integration File signal 2: autoint2.e
 Quant Time: Sep 22 04:32:11 2018
 Quant Method : Z:\pestpcbsrv\HPCHEM1\ECD_D\Method\PD091918CLP.M
 Quant Title : GC Extractables
 QLast Update : Thu Sep 20 04:32:05 2018
 Response via : Initial Calibration
 Integrator: ChemStation 6890 Scale Mode: Large solvent peaks clipped

Volume Inj. : 1 ul
 Signal #1 Phase : ZB-MR2 Signal #2 Phase: ZB-MR1
 Signal #1 Info : 30M x 0.32mm x0.2 Signal #2 Info : 30M x 0.32mm x 0.50µm



(3) gamma-BHC (Lindane) (MA)

4.013min 42.761 ng/ml m

response 82992777

(3) gamma-BHC (Lindane) #2 (MA)

4.563min 36.507 ng/ml

response 1043002914

(+) = Expected Retention Time