

Data Path : Z:\pestpcbsrv\HPCHEM1\ECD D\Data\PD092118\
 Data File : PD049308.D
 Signal(s) : Signal #1: ECD1A.CH Signal #2: ECD2B.CH
 Acq On : 21 Sep 2018 8:45
 Operator : AJ\SJ
 Sample : J4914-09
 Misc :
 ALS Vial : 4 Sample Multiplier: 1

Instrument :
 ECD_D
 ClientSampleId :

Integration File signal 1: autoint1.e
 Integration File signal 2: autoint2.e
 Quant Time: Sep 22 04:09:33 2018
 Quant Method : Z:\pestpcbsrv\HPCHEM1\ECD_D\Method\PD091918CLP.M
 Quant Title : GC Extractables
 QLast Update : Thu Sep 20 04:32:05 2018
 Response via : Initial Calibration
 Integrator: ChemStation 6890 Scale Mode: Large solvent peaks clipped

Volume Inj. : 1 ul
 Signal #1 Phase : ZB-MR2 Signal #2 Phase: ZB-MR1
 Signal #1 Info : 30M x 0.32mm x0.2 Signal #2 Info : 30M x 0.32mm x 0.50µm

Compound	RT#1	RT#2	Resp#1	Resp#2	ng/ml	ng/ml

System Monitoring Compounds						
1) SA Tetrachlo...	3.315	3.907	25278629	386.0E6	19.734	19.779
27) SA Decachlor...	7.976	8.895	66137166	538.4E6	42.014	36.911
Target Compounds						
2) A alpha-BHC	3.742	0.000	4964317	0	2.440	N.D. #
3) MA gamma-BHC...	4.016	4.563	53272156	616.5E6	27.448	21.578
4) MA Heptachlor	4.300	5.071	60428311	801.0E6	31.195	30.998
5) MB Aldrin	4.539	5.372	45799015	639.3E6	25.380	24.283
6) B beta-BHC	4.263	4.724	25478721	298.7E6	32.447	26.433
10) B trans-Chl...	5.194	5.982	80160359	1003.5E6	46.231	40.830
11) B cis-Chlor...	5.194f	0.000	80160359	0	48.201	N.D. #
13) MA Dieldrin	5.542	6.355	83310791	951.2E6	43.599	40.295
14) MA Endrin	5.795	6.569	135.1E6	1350.7E6	79.449	70.759
15) B Endosulfa...	6.026f	0.000	3967995	0	2.383	N.D. #
16) A 4,4'-DDD	5.928	6.691	136.2E6	996.3E6	87.493	71.838
18) B Endrin al...	6.236	0.000	3725120	0	2.739	N.D. #
19) B Endosulfa...	6.492f	0.000	12177498	0	7.909	N.D. #
20) A Methoxychlor	6.711	7.443	64025112	328.7E6	74.452	57.233
21) B Endrin ke...	6.928	7.578	5570151	40493637	3.105	2.583
22) Toxaphene-1	5.542	0.000	83310791	0	8175.043	N.D. #
23) Toxaphene-2	0.000	6.569	0	1350.7E6	N.D.	8885.112
26) Toxaphene-5	6.850	7.578	11161310	40493637	290.928	209.829 #

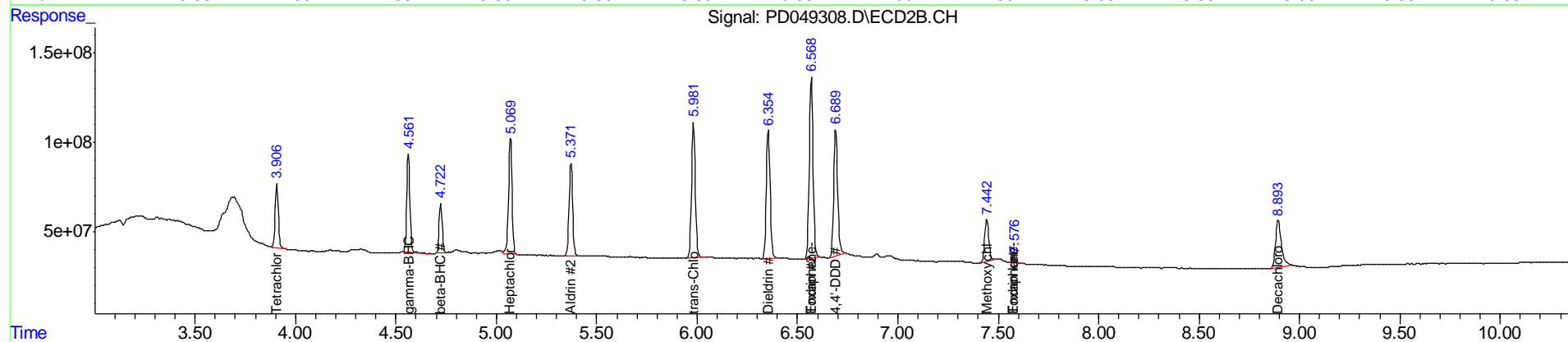
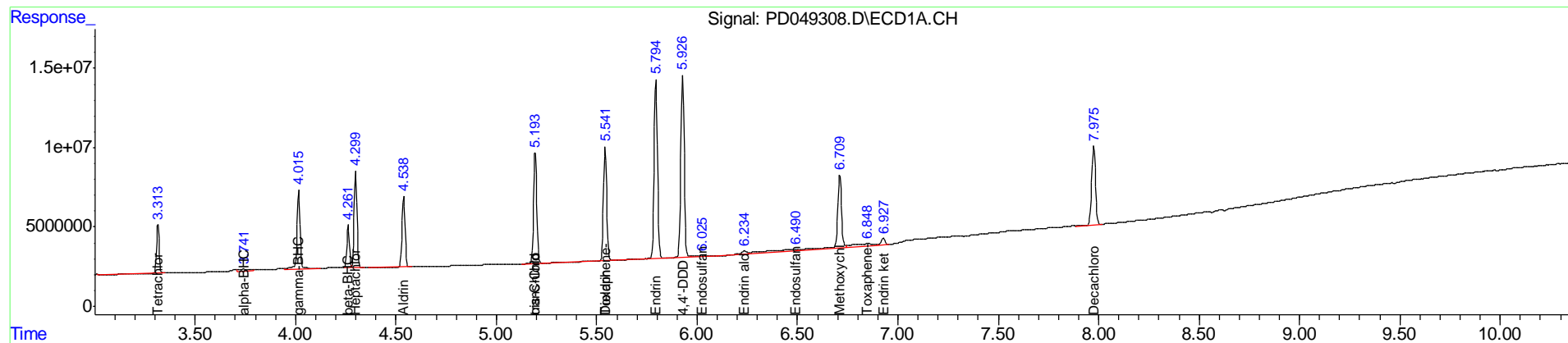
(f)=RT Delta > 1/2 Window (#)=Amounts differ by > 25% (m)=manual int.

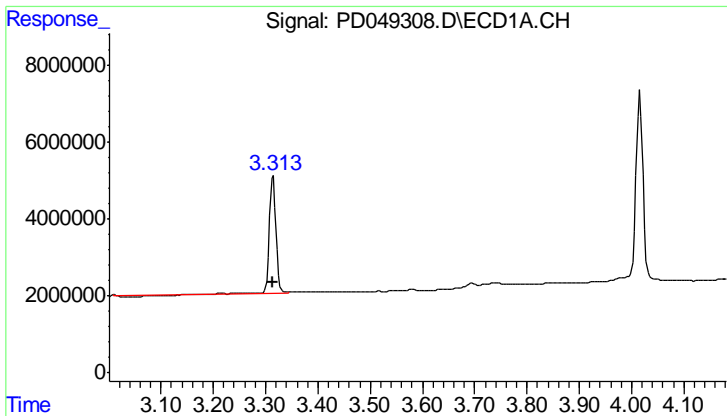
Data Path : Z:\pestpcbsrv\HPCHEM1\ECD D\Data\PD092118\
 Data File : PD049308.D
 Signal(s) : Signal #1: ECD1A.CH Signal #2: ECD2B.CH
 Acq On : 21 Sep 2018 8:45
 Operator : AJ\SJ
 Sample : J4914-09
 Misc :
 ALS Vial : 4 Sample Multiplier: 1

Instrument :
 ECD_D
 ClientSampleId :

Integration File signal 1: autoint1.e
 Integration File signal 2: autoint2.e
 Quant Time: Sep 22 04:09:33 2018
 Quant Method : Z:\pestpcbsrv\HPCHEM1\ECD_D\Method\PD091918CLP.M
 Quant Title : GC Extractables
 QLast Update : Thu Sep 20 04:32:05 2018
 Response via : Initial Calibration
 Integrator: ChemStation 6890 Scale Mode: Large solvent peaks clipped

Volume Inj. : 1 ul
 Signal #1 Phase : ZB-MR2 Signal #2 Phase: ZB-MR1
 Signal #1 Info : 30M x 0.32mm x0.2 Signal #2 Info : 30M x 0.32mm x 0.50µm

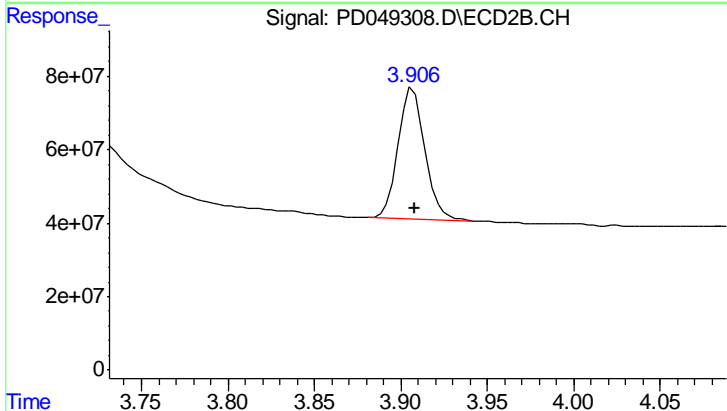




#1 Tetrachloro-m-xylene

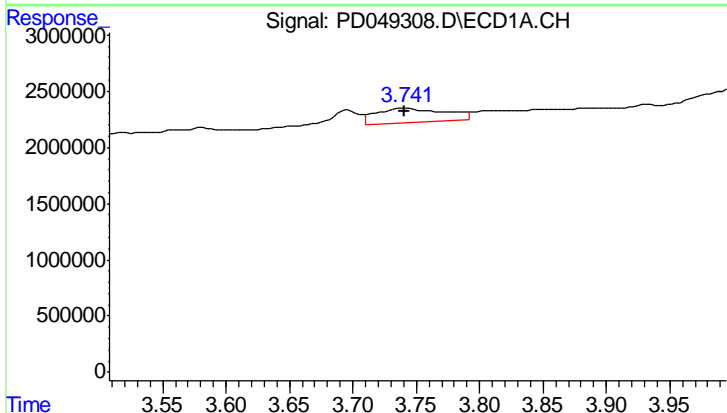
R.T.: 3.315 min
 Delta R.T.: 0.001 min
 Response: 25278629
 Conc: 19.73 ng/ml

Instrument :
 ECD_D
 ClientSampleId :



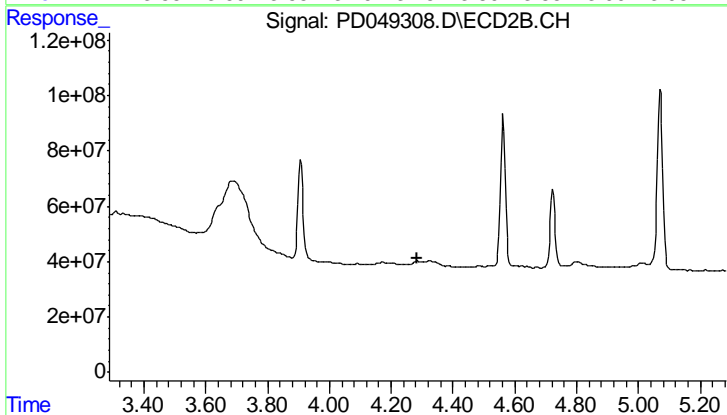
#1 Tetrachloro-m-xylene

R.T.: 3.907 min
 Delta R.T.: 0.000 min
 Response: 385991434
 Conc: 19.78 ng/ml



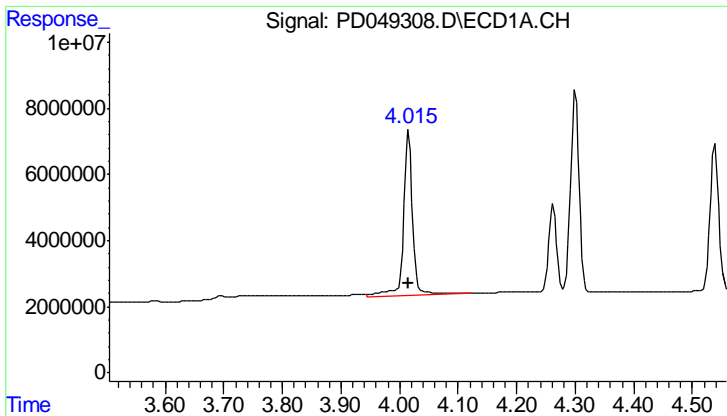
#2 alpha-BHC

R.T.: 3.742 min
 Delta R.T.: 0.000 min
 Response: 4964317
 Conc: 2.44 ng/ml



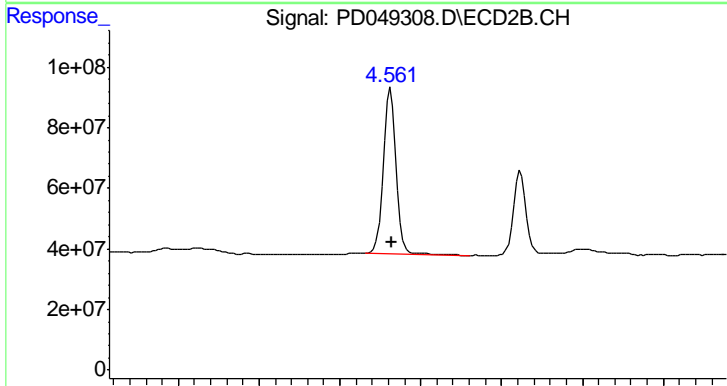
#2 alpha-BHC

R.T.: 0.000 min
 Exp R.T. : 4.285 min
 Response: 0
 Conc: N.D.

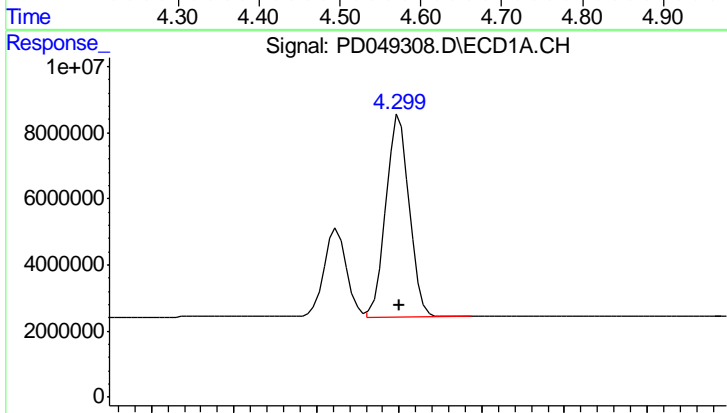


#3 gamma-BHC (Lindane)
 R.T.: 4.016 min
 Delta R.T.: 0.000 min
 Response: 53272156
 Conc: 27.45 ng/ml

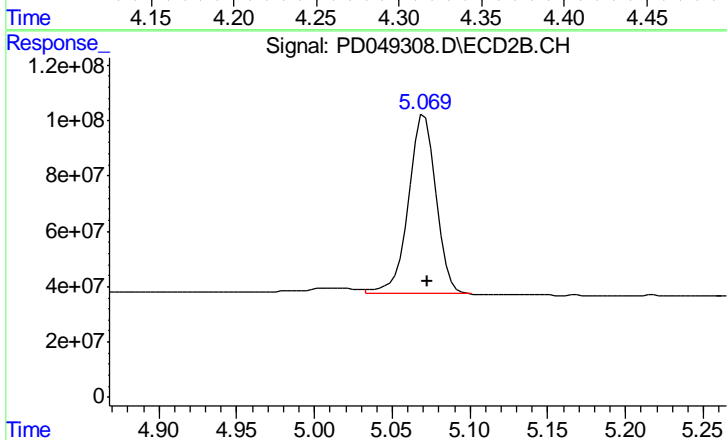
Instrument :
 ECD_D
 ClientSampled :



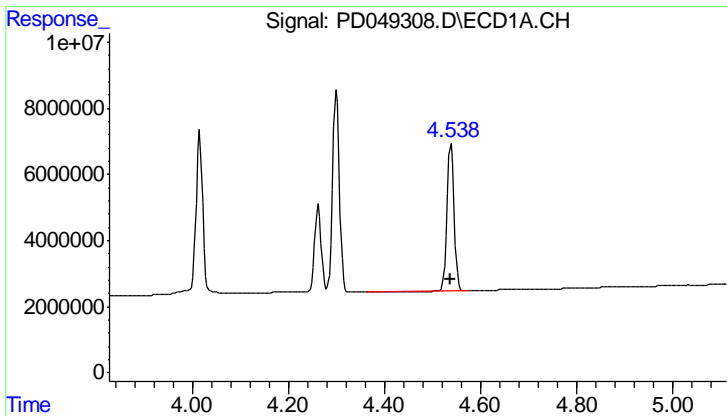
#3 gamma-BHC (Lindane)
 R.T.: 4.563 min
 Delta R.T.: -0.001 min
 Response: 616489456
 Conc: 21.58 ng/ml



#4 Heptachlor
 R.T.: 4.300 min
 Delta R.T.: 0.000 min
 Response: 60428311
 Conc: 31.19 ng/ml

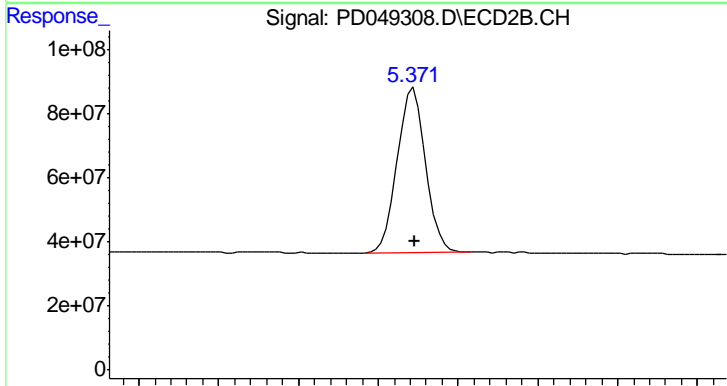


#4 Heptachlor
 R.T.: 5.071 min
 Delta R.T.: -0.002 min
 Response: 801047713
 Conc: 31.00 ng/ml

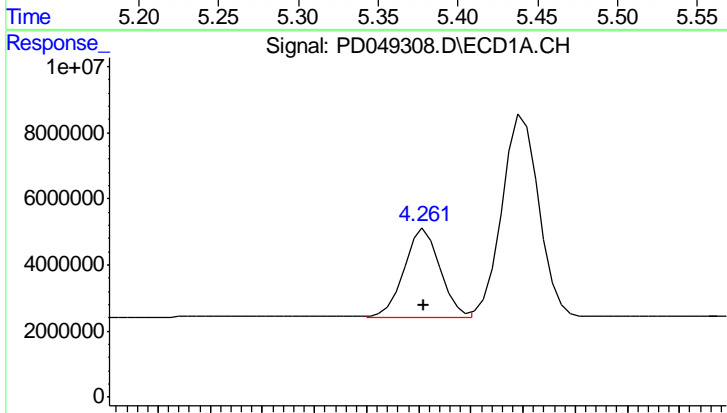


#5 Aldrin
 R.T.: 4.539 min
 Delta R.T.: 0.001 min
 Response: 45799015
 Conc: 25.38 ng/ml

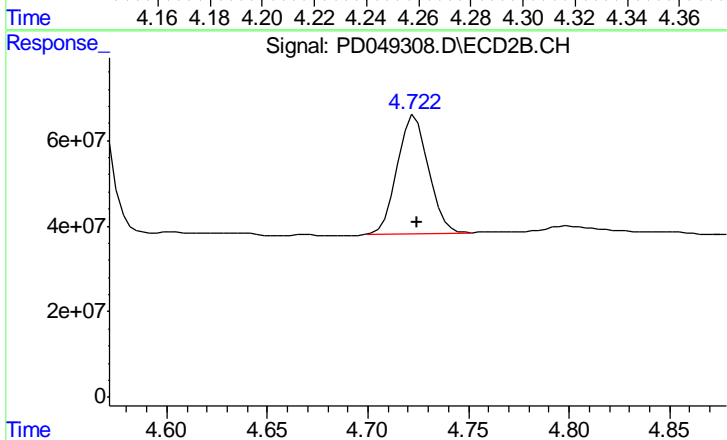
Instrument :
 ECD_D
 ClientSampled :



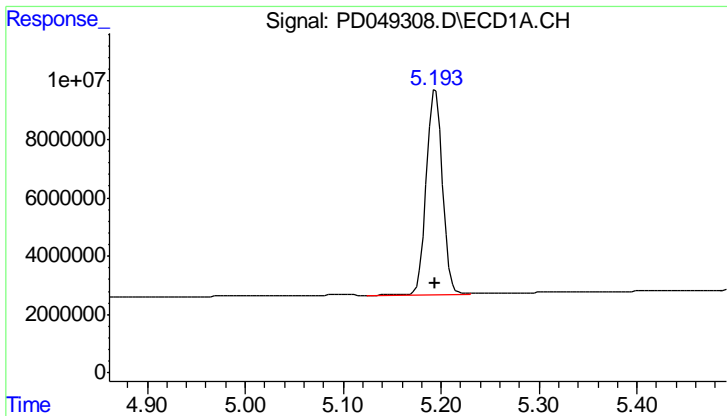
#5 Aldrin
 R.T.: 5.372 min
 Delta R.T.: -0.001 min
 Response: 639283654
 Conc: 24.28 ng/ml



#6 beta-BHC
 R.T.: 4.263 min
 Delta R.T.: 0.000 min
 Response: 25478721
 Conc: 32.45 ng/ml

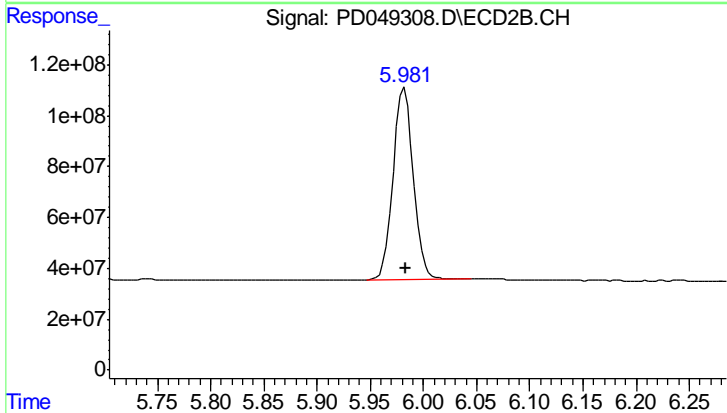


#6 beta-BHC
 R.T.: 4.724 min
 Delta R.T.: 0.000 min
 Response: 298684962
 Conc: 26.43 ng/ml

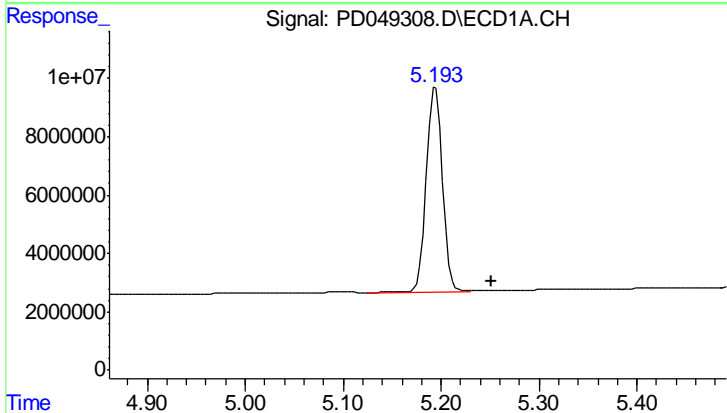


#10 trans-Chlordane
 R.T.: 5.194 min
 Delta R.T.: 0.000 min
 Response: 80160359
 Conc: 46.23 ng/ml

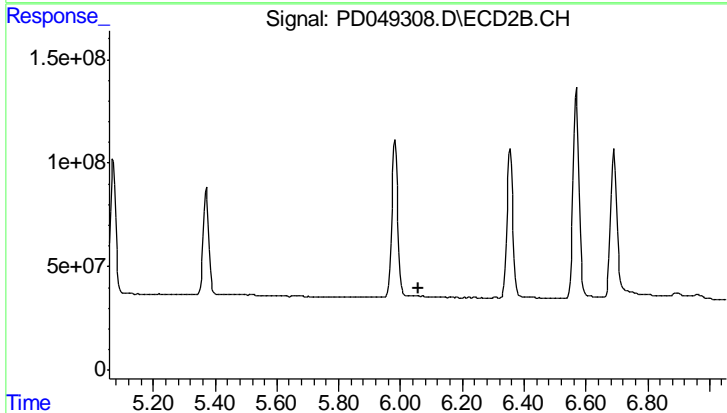
Instrument :
 ECD_D
 ClientSampled :



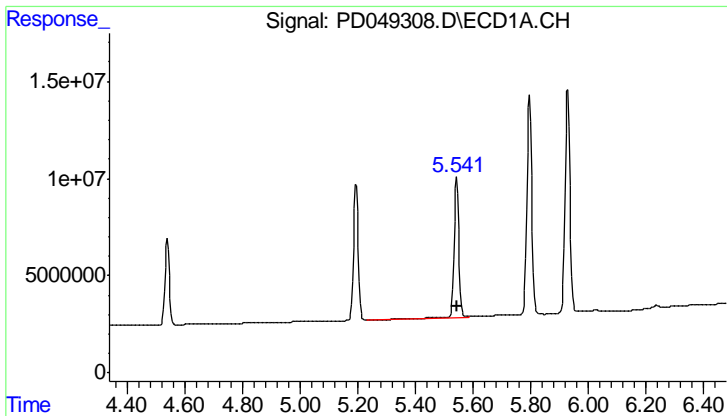
#10 trans-Chlordane
 R.T.: 5.982 min
 Delta R.T.: -0.001 min
 Response: 1003463165
 Conc: 40.83 ng/ml



#11 cis-Chlordane
 R.T.: 5.194 min
 Delta R.T.: -0.057 min
 Response: 80160359
 Conc: 48.20 ng/ml



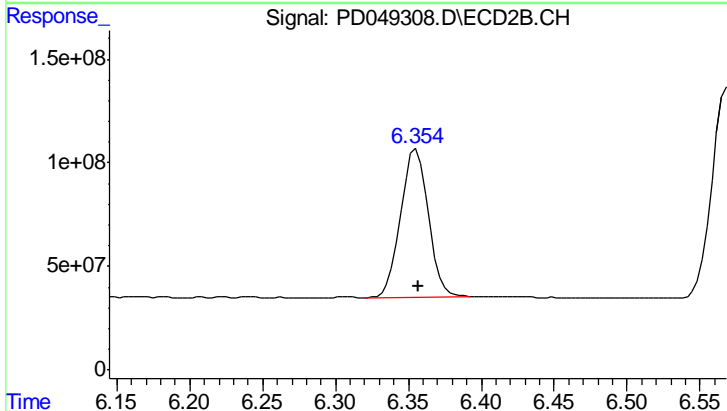
#11 cis-Chlordane
 R.T.: 0.000 min
 Exp R.T.: 6.057 min
 Response: 0
 Conc: N.D.



#13 Dieldrin

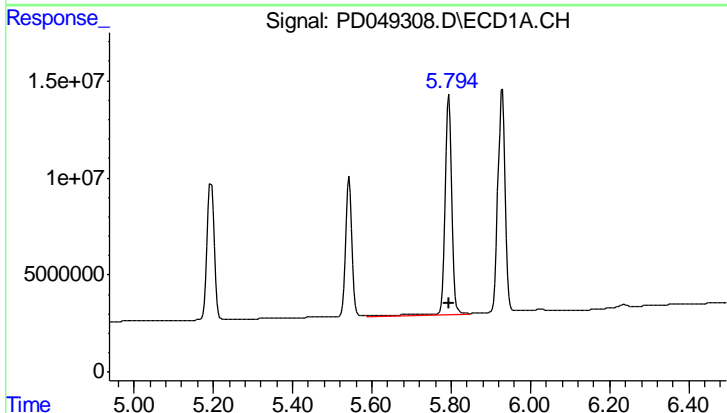
R.T.: 5.542 min
Delta R.T.: 0.000 min
Response: 83310791
Conc: 43.60 ng/ml

Instrument :
ECD_D
ClientSampled :



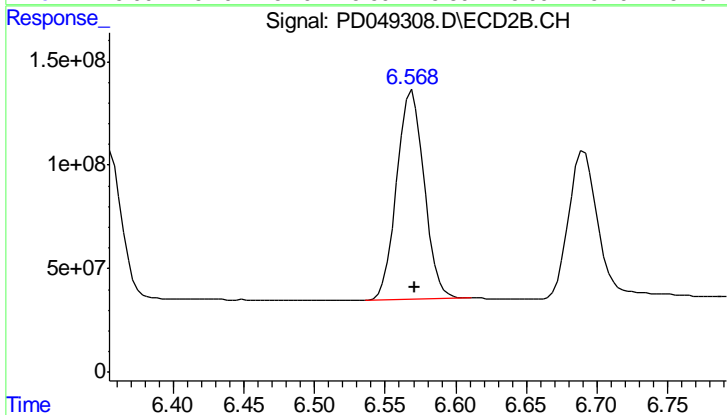
#13 Dieldrin

R.T.: 6.355 min
Delta R.T.: -0.001 min
Response: 951192155
Conc: 40.30 ng/ml



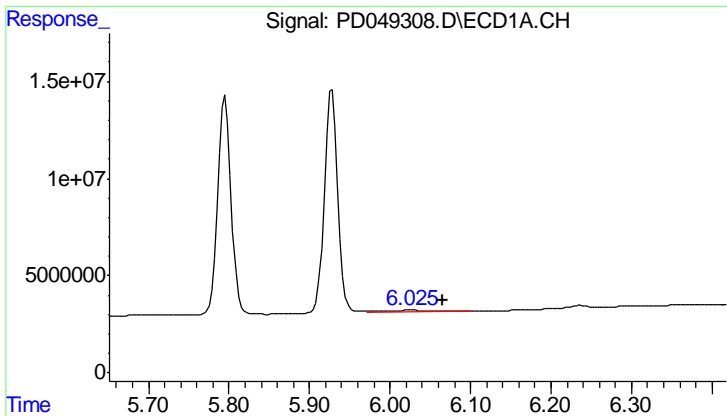
#14 Endrin

R.T.: 5.795 min
Delta R.T.: 0.000 min
Response: 135069542
Conc: 79.45 ng/ml



#14 Endrin

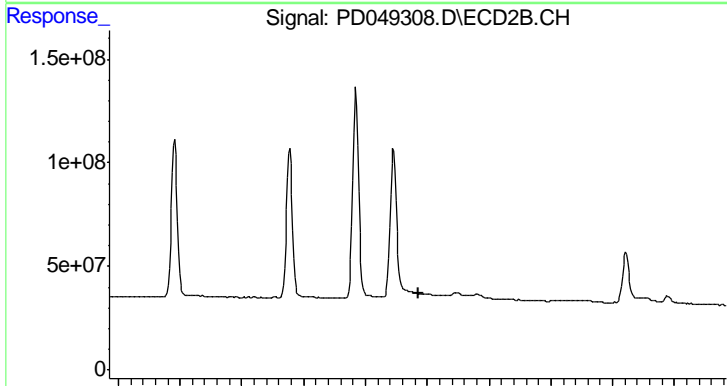
R.T.: 6.569 min
Delta R.T.: -0.002 min
Response: 1350696777
Conc: 70.76 ng/ml



#15 Endosulfan II

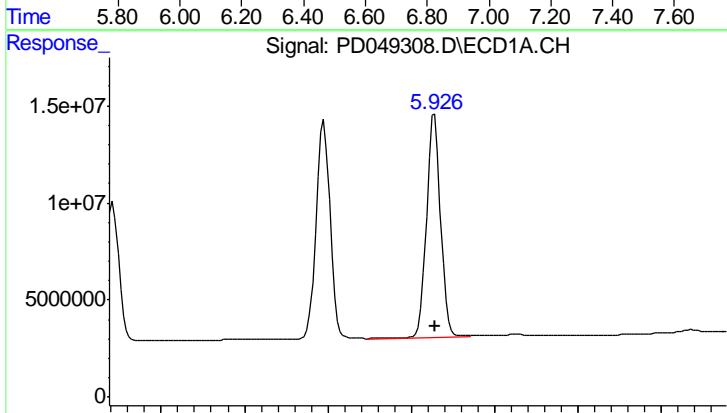
R.T.: 6.026 min
 Delta R.T.: -0.040 min
 Response: 3967995
 Conc: 2.38 ng/ml

Instrument :
 ECD_D
 ClientSampleId :



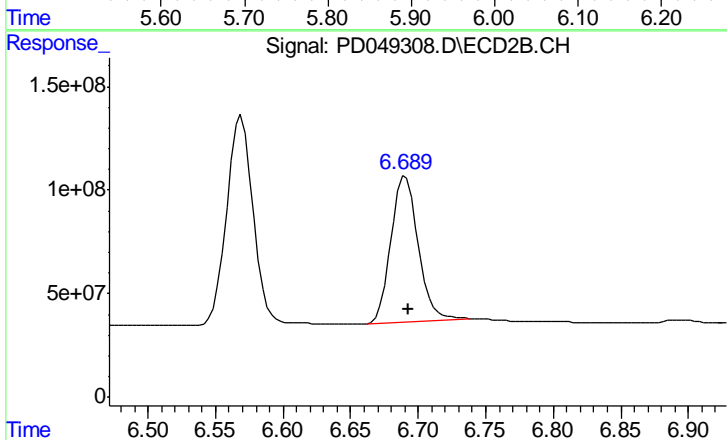
#15 Endosulfan II

R.T.: 0.000 min
 Exp R.T.: 6.771 min
 Response: 0
 Conc: N.D.



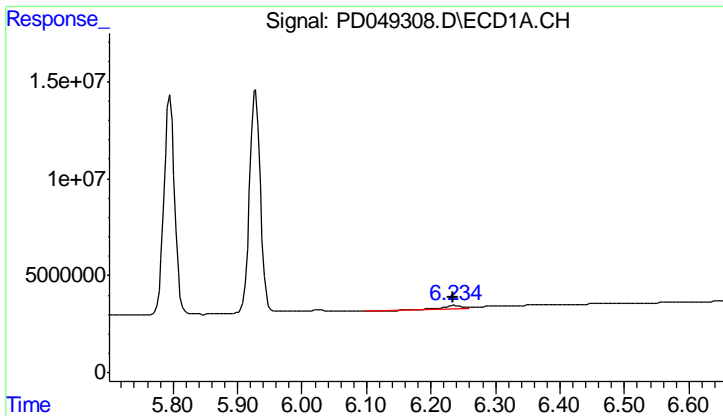
#16 4,4'-DDD

R.T.: 5.928 min
 Delta R.T.: 0.000 min
 Response: 136158166
 Conc: 87.49 ng/ml



#16 4,4'-DDD

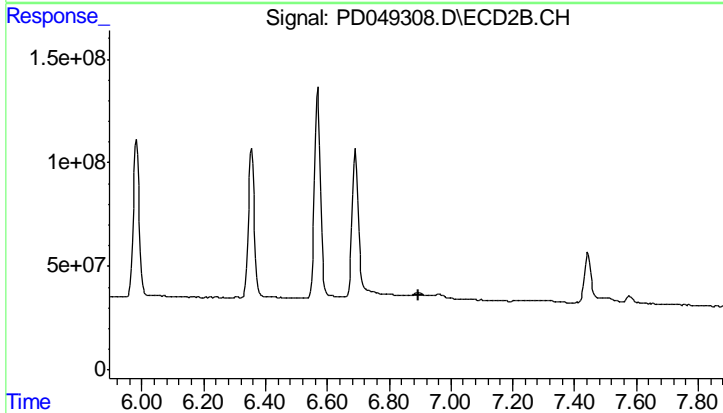
R.T.: 6.691 min
 Delta R.T.: -0.002 min
 Response: 996262983
 Conc: 71.84 ng/ml



#18 Endrin aldehyde

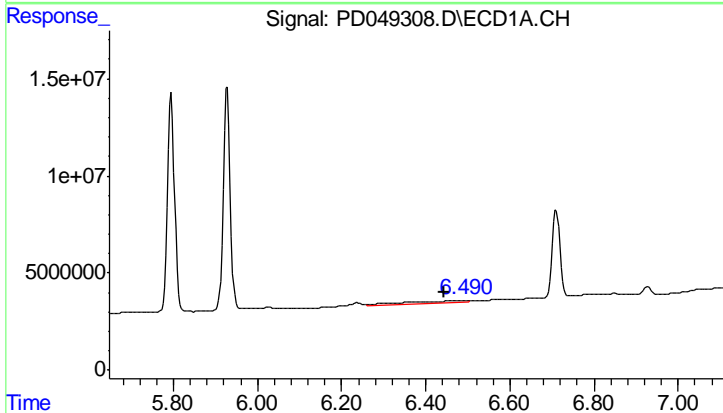
R.T.: 6.236 min
 Delta R.T.: 0.000 min
 Response: 3725120
 Conc: 2.74 ng/ml

Instrument :
 ECD_D
 ClientSampled :



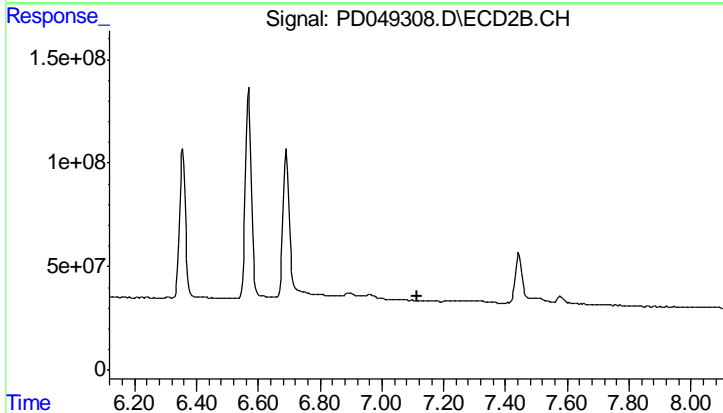
#18 Endrin aldehyde

R.T.: 0.000 min
 Exp R.T. : 6.895 min
 Response: 0
 Conc: N.D.



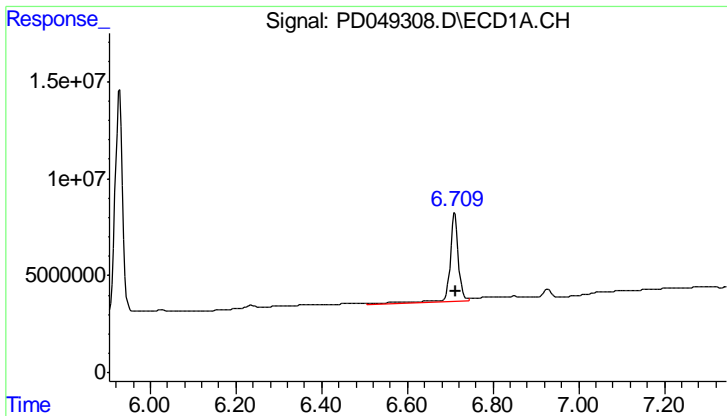
#19 Endosulfan Sulfate

R.T.: 6.492 min
 Delta R.T.: 0.047 min
 Response: 12177498
 Conc: 7.91 ng/ml



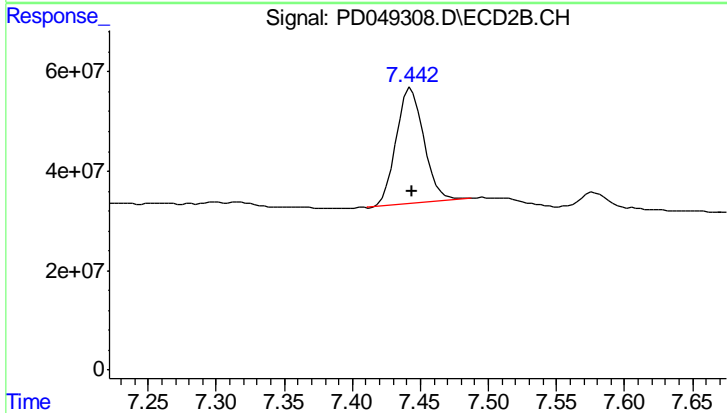
#19 Endosulfan Sulfate

R.T.: 0.000 min
 Exp R.T. : 7.116 min
 Response: 0
 Conc: N.D.

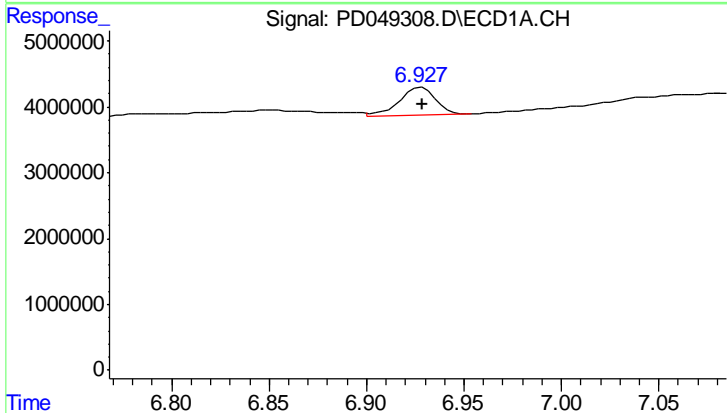


#20 Methoxychlor
 R.T.: 6.711 min
 Delta R.T.: 0.000 min
 Response: 64025112
 Conc: 74.45 ng/ml

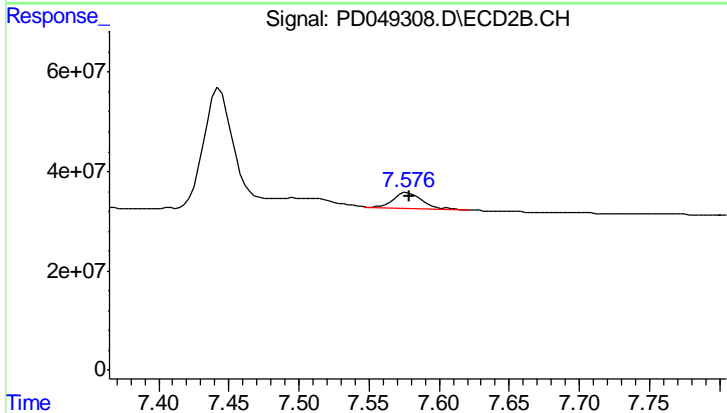
Instrument :
 ECD_D
 ClientSampled :



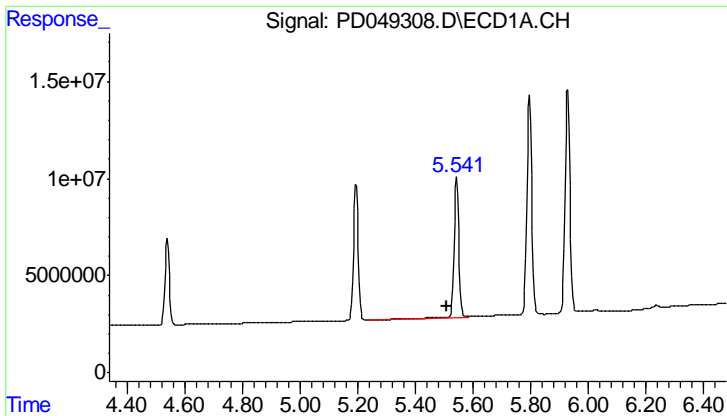
#20 Methoxychlor
 R.T.: 7.443 min
 Delta R.T.: 0.000 min
 Response: 328713338
 Conc: 57.23 ng/ml



#21 Endrin ketone
 R.T.: 6.928 min
 Delta R.T.: 0.000 min
 Response: 5570151
 Conc: 3.11 ng/ml



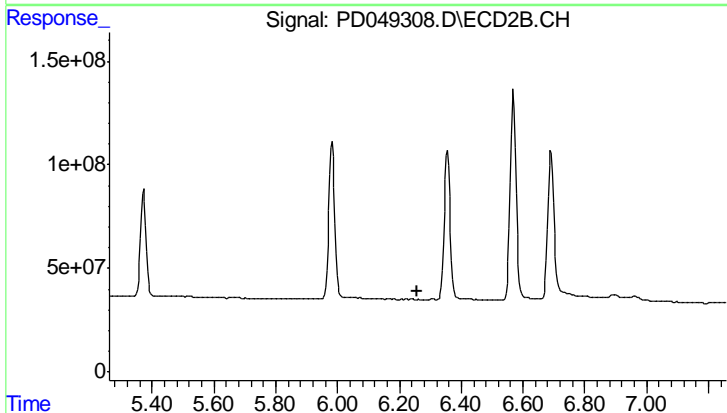
#21 Endrin ketone
 R.T.: 7.578 min
 Delta R.T.: 0.000 min
 Response: 40493637
 Conc: 2.58 ng/ml



#22 Toxaphene-1

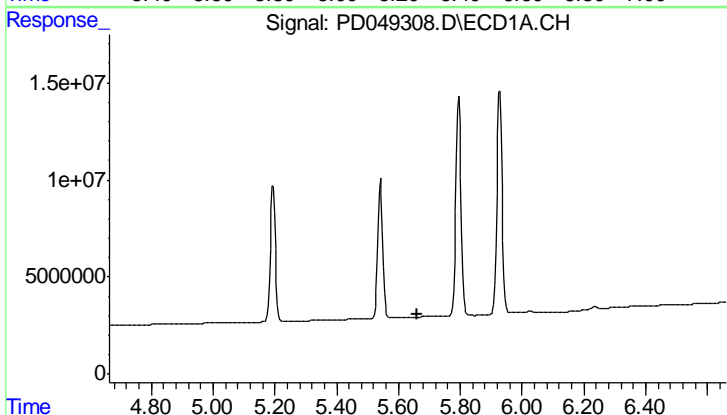
R.T.: 5.542 min
 Delta R.T.: 0.035 min
 Response: 83310791
 Conc: 8175.04 ng/ml

Instrument :
 ECD_D
 ClientSampled :



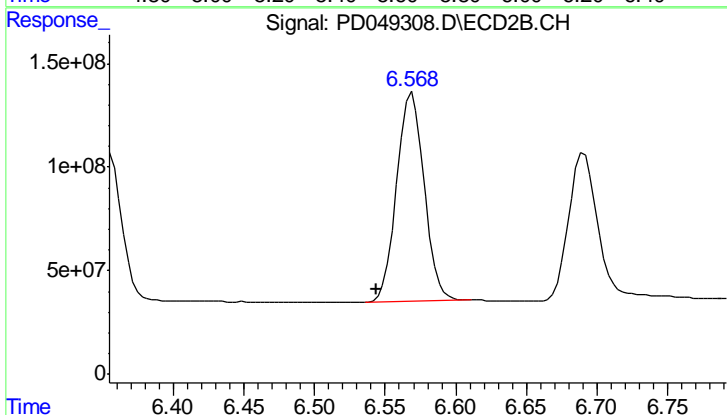
#22 Toxaphene-1

R.T.: 0.000 min
 Exp R.T.: 6.260 min
 Response: 0
 Conc: N.D.



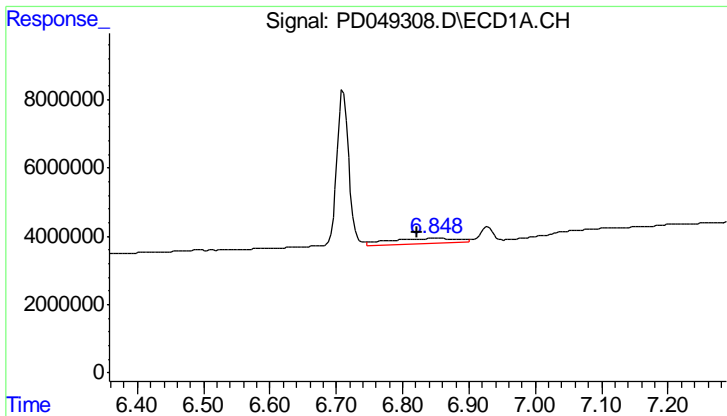
#23 Toxaphene-2

R.T.: 0.000 min
 Exp R.T.: 5.662 min
 Response: 0
 Conc: N.D.



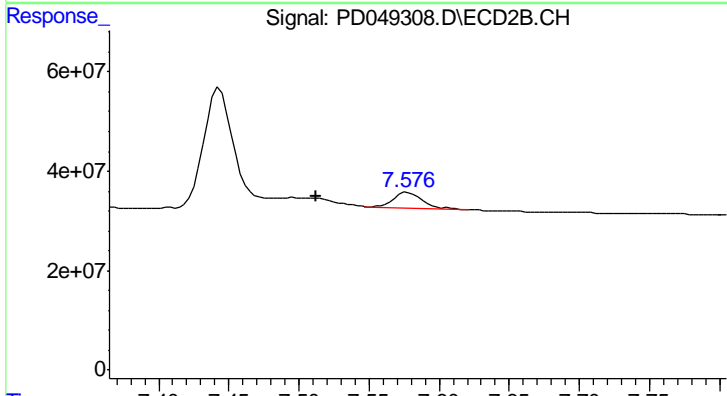
#23 Toxaphene-2

R.T.: 6.569 min
 Delta R.T.: 0.025 min
 Response: 1350696777
 Conc: 8885.11 ng/ml

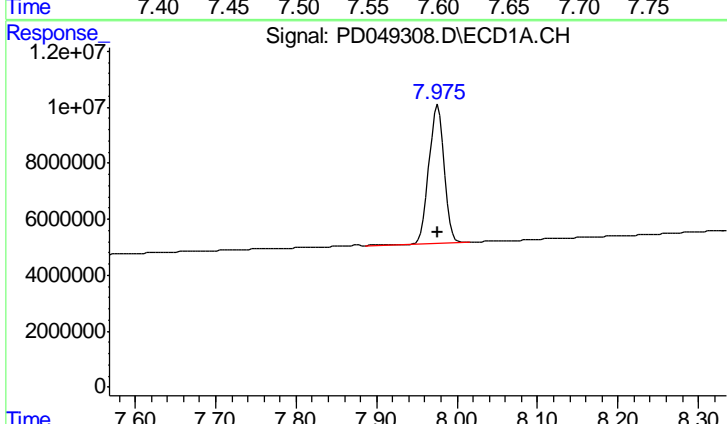


#26 Toxaphene-5
 R.T.: 6.850 min
 Delta R.T.: 0.029 min
 Response: 11161310
 Conc: 290.93 ng/ml

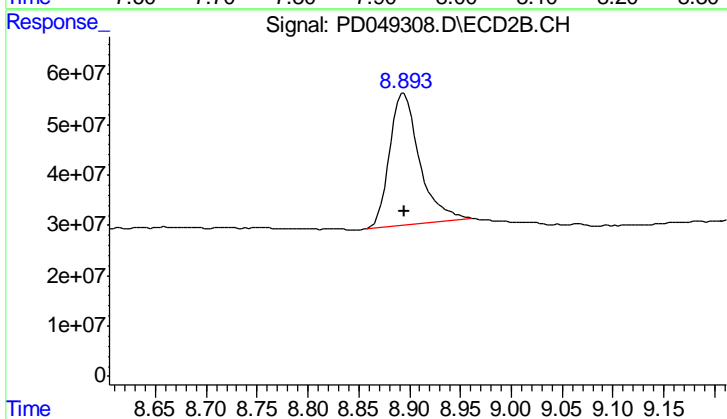
Instrument :
 ECD_D
 ClientSampleId :



#26 Toxaphene-5
 R.T.: 7.578 min
 Delta R.T.: 0.065 min
 Response: 40493637
 Conc: 209.83 ng/ml



#27 Decachlorobiphenyl
 R.T.: 7.976 min
 Delta R.T.: 0.000 min
 Response: 66137166
 Conc: 42.01 ng/ml



#27 Decachlorobiphenyl
 R.T.: 8.895 min
 Delta R.T.: 0.000 min
 Response: 538362842
 Conc: 36.91 ng/ml