

Data Path : Z:\pestpcbsrv\HPCHEM1\ECD\_D\Data\PD092221\  
 Data File : PD065792.D  
 Signal(s) : Signal #1: ECD1A.ch Signal #2: ECD2B.ch  
 Acq On : 22 Sep 2021 17:27  
 Operator : AR\AJ  
 Sample : PSTDICC025  
 Misc :  
 ALS Vial : 8 Sample Multiplier: 1

Instrument :  
 ECD\_D  
 ClientSampleId :  
 PSTDICC025

Integration File signal 1: autoint1.e  
 Integration File signal 2: autoint2.e  
 Quant Time: Sep 23 04:29:30 2021  
 Quant Method : Z:\pestpcbsrv\HPCHEM1\ECD\_D\Method\PD092221.M  
 Quant Title : GC Extractables  
 QLast Update : Thu Sep 23 04:21:10 2021  
 Response via : Initial Calibration  
 Integrator: ChemStation

Volume Inj. : 2 µl  
 Signal #1 Phase : ZB-MR2 Signal #2 Phase: ZB-MR1  
 Signal #1 Info : 30M x 0.32mm x0.2 Signal #2 Info : 30M x 0.32mm x 0.50µm

	Compound	RT#1	RT#2	Resp#1	Resp#2	ng/ml	ng/ml
-----							
System Monitoring Compounds							
1)	SA Tetrachlo...	3.493	4.012	18717152	147.9E6	25.031	25.937
28)	SA Decachlor...	8.234	9.084	35305307	101.1E6	26.633	26.218
Target Compounds							
2)	A alpha-BHC	3.932	4.407	27057728	210.0E6	23.284	25.067
3)	MA gamma-BHC...	4.215	4.693	27191823	196.2E6	24.054	25.330
4)	MA Heptachlor	4.513	5.197	29586127	184.7E6	24.523	25.775
5)	MB Aldrin	4.760	5.501	27568460	170.7E6	24.048	25.812
6)	B beta-BHC	4.463	4.870	15200645	93139964	27.017	26.504
7)	B delta-BHC	4.668	5.086	27578310	187.8E6	23.464	25.664
8)	B Heptachlo...	5.203	5.892	28275128	135.6E6	24.821	25.527
9)	A Endosulfan I	5.541	6.250	27420432	143.4E6	24.874	25.922
10)	B gamma-Chl...	5.427	6.125	29660857	152.8E6	24.869	25.921
11)	B alpha-Chl...	5.486	6.197	29533635	151.4E6	24.926	25.987
12)	B 4,4'-DDE	5.648	6.355	26915513	146.0E6	23.896	25.408
13)	MA Dieldrin	5.784	6.508	28780937	151.0E6	24.260	25.597
14)	MA Endrin	6.042	6.727	26695233	127.2E6	24.592	25.672
15)	B Endosulfa...	6.314	6.940	27524166	123.3E6	26.029	25.581
16)	A 4,4'-DDD	6.164	6.849	24481780	124.7E6	24.100	25.585
17)	MA 4,4'-DDT	6.403	7.147	27764104	129.6E6	24.480	25.303
18)	B Endrin al...	6.482	7.064	22539511	101.2E6	25.457	25.846
19)	B Endosulfa...	6.694	7.287	29472654	127.9E6	26.076	25.974
20)	A Methoxychlor	6.949	7.607	18359774	68937552	25.956	26.039
21)	B Endrin ke...	7.188	7.761	35767498	148.3E6	25.288	26.346
22)	Mirex	7.373	8.210	31631681	103.9E6	27.898	27.034

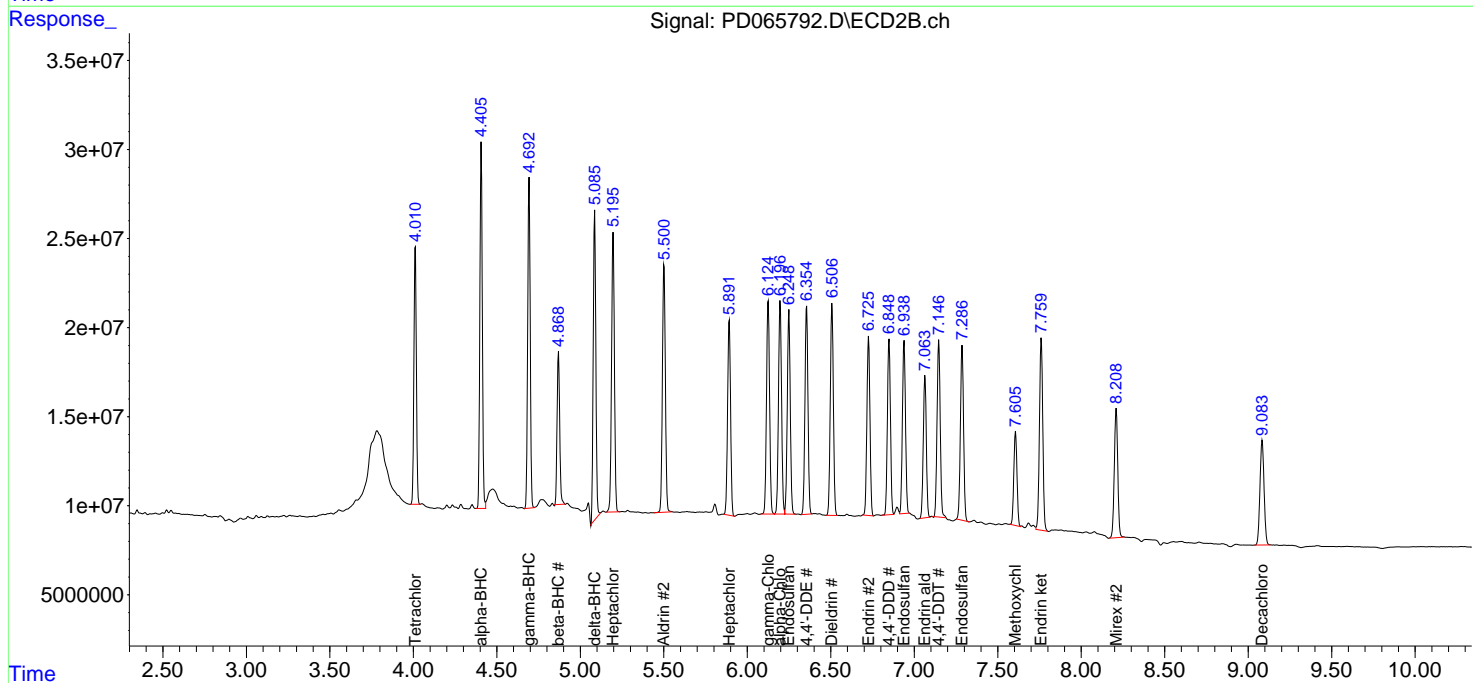
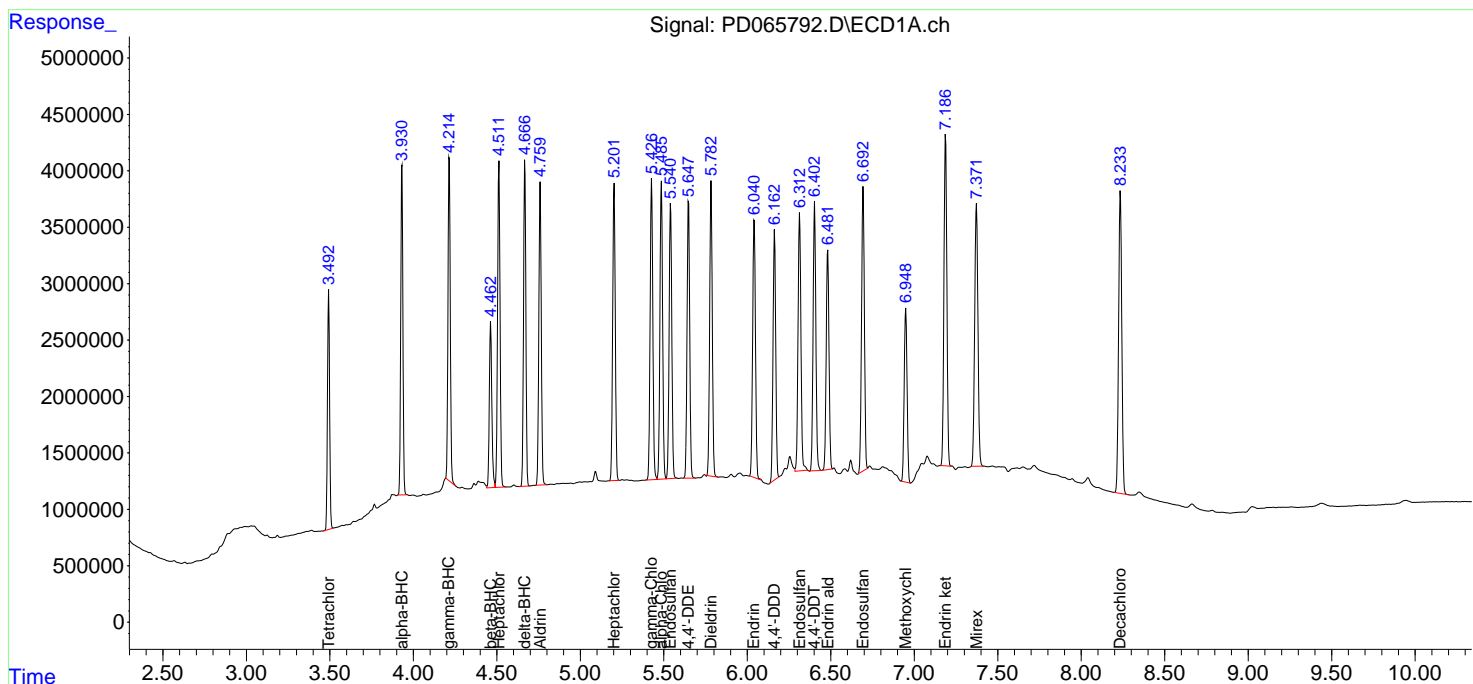
(f)=RT Delta > 1/2 Window (#)=Amounts differ by > 25% (m)=manual int.

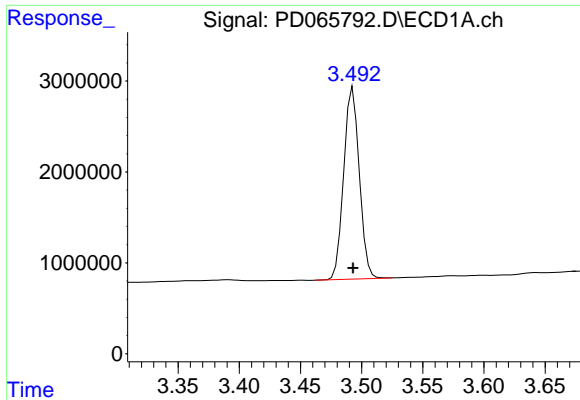
Data Path : Z:\pestpcbsrv\HPCHEM1\ECD\_D\Data\PD092221\  
 Data File : PD065792.D  
 Signal(s) : Signal #1: ECD1A.ch Signal #2: ECD2B.ch  
 Acq On : 22 Sep 2021 17:27  
 Operator : AR\AJ  
 Sample : PSTDICC025  
 Misc :  
 ALS Vial : 8 Sample Multiplier: 1

Instrument :  
 ECD\_D  
 ClientSampleId :  
 PSTDICC025

Integration File signal 1: autoint1.e  
 Integration File signal 2: autoint2.e  
 Quant Time: Sep 23 04:29:30 2021  
 Quant Method : Z:\pestpcbsrv\HPCHEM1\ECD\_D\Method\PD092221.M  
 Quant Title : GC Extractables  
 QLast Update : Thu Sep 23 04:21:10 2021  
 Response via : Initial Calibration  
 Integrator: ChemStation

Volume Inj. : 2 µl  
 Signal #1 Phase : ZB-MR2 Signal #2 Phase: ZB-MR1  
 Signal #1 Info : 30M x 0.32mm x0.2 Signal #2 Info : 30M x 0.32mm x 0.50µm

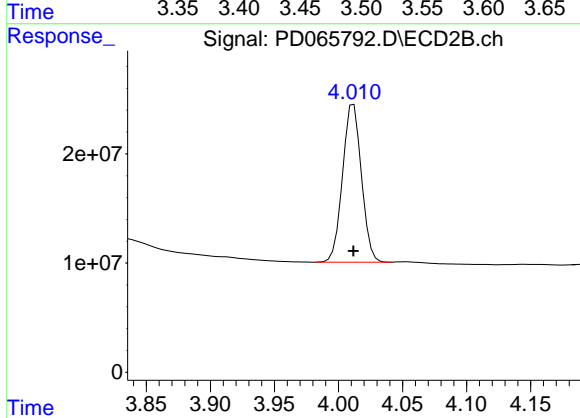




#1 Tetrachloro-m-xylene

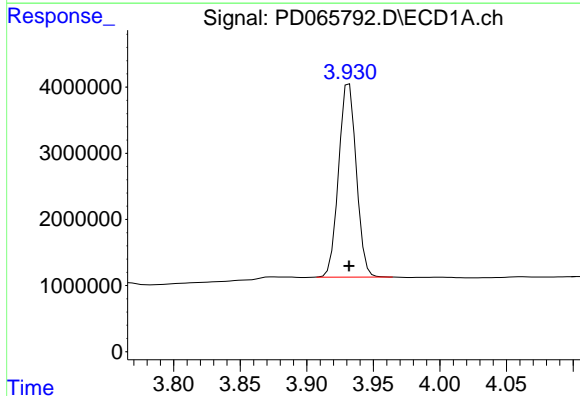
R.T.: 3.493 min  
 Delta R.T.: 0.000 min  
 Response: 18717152  
 Conc: 25.03 ng/ml

Instrument :  
 ECD\_D  
 ClientSampleId :  
 PSTDICC025



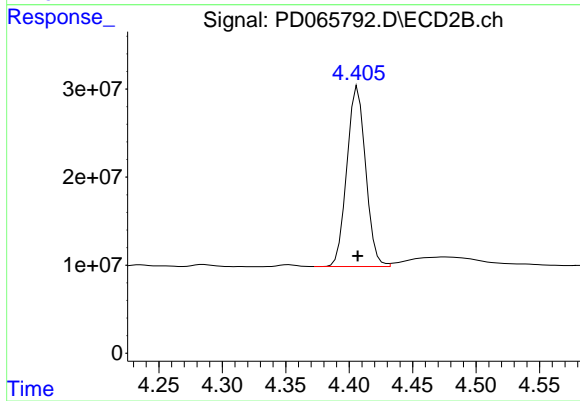
#1 Tetrachloro-m-xylene

R.T.: 4.012 min  
 Delta R.T.: 0.000 min  
 Response: 147912825  
 Conc: 25.94 ng/ml



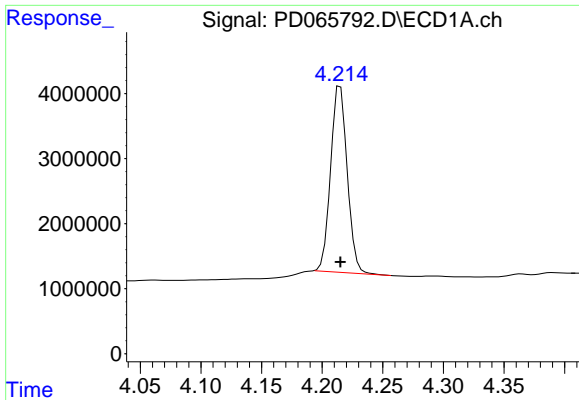
#2 alpha-BHC

R.T.: 3.932 min  
 Delta R.T.: 0.000 min  
 Response: 27057728  
 Conc: 23.28 ng/ml



#2 alpha-BHC

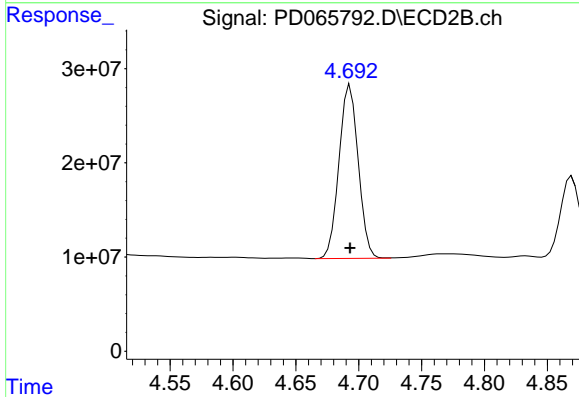
R.T.: 4.407 min  
 Delta R.T.: 0.000 min  
 Response: 209991179  
 Conc: 25.07 ng/ml



#3 gamma-BHC (Lindane)

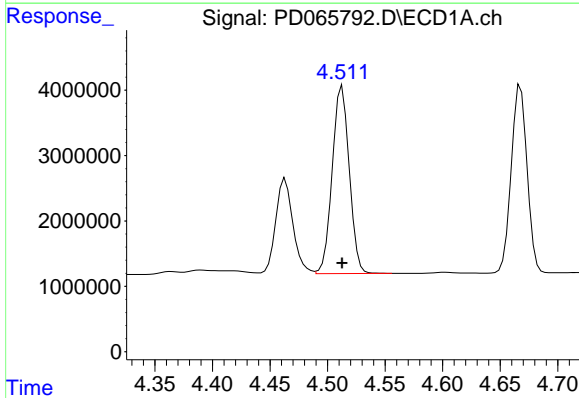
R.T.: 4.215 min  
 Delta R.T.: 0.000 min  
 Response: 27191823  
 Conc: 24.05 ng/ml

Instrument :  
 ECD\_D  
 ClientSampleId :  
 PSTDICC025



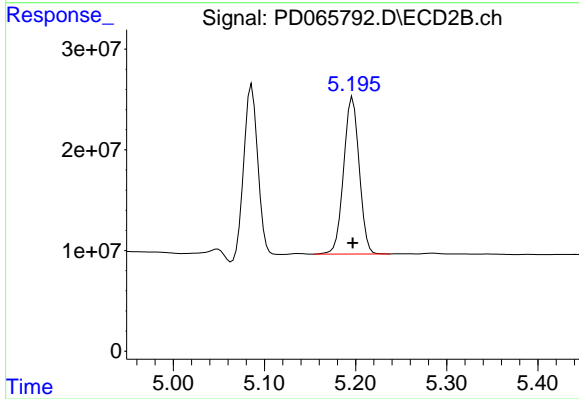
#3 gamma-BHC (Lindane)

R.T.: 4.693 min  
 Delta R.T.: 0.000 min  
 Response: 196207058  
 Conc: 25.33 ng/ml



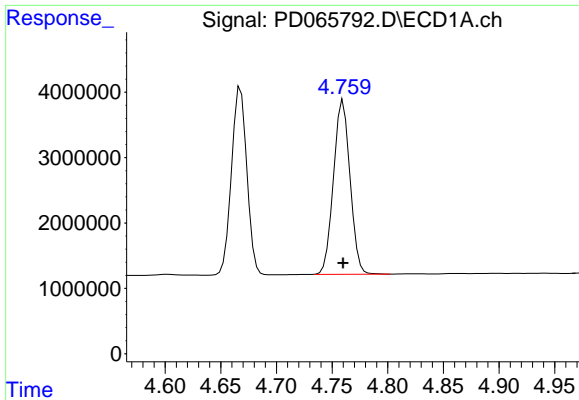
#4 Heptachlor

R.T.: 4.513 min  
 Delta R.T.: 0.000 min  
 Response: 29586127  
 Conc: 24.52 ng/ml



#4 Heptachlor

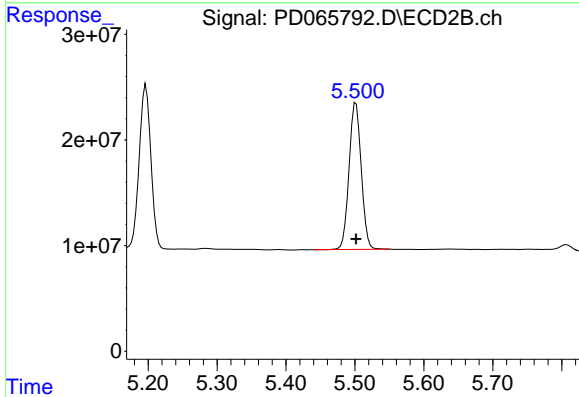
R.T.: 5.197 min  
 Delta R.T.: 0.000 min  
 Response: 184656645  
 Conc: 25.78 ng/ml



#5 Aldrin

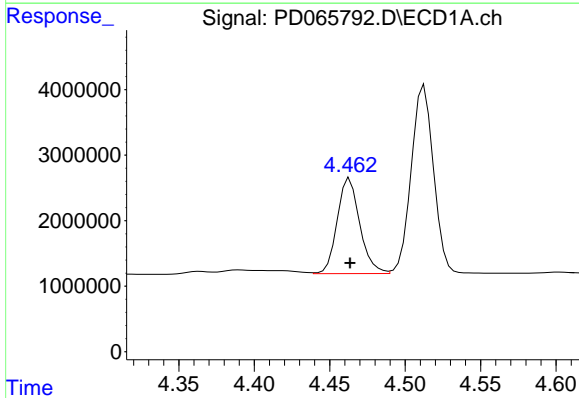
R.T.: 4.760 min  
 Delta R.T.: 0.000 min  
 Response: 27568460  
 Conc: 24.05 ng/ml

Instrument :  
 ECD\_D  
 ClientSampleId :  
 PSTDICC025



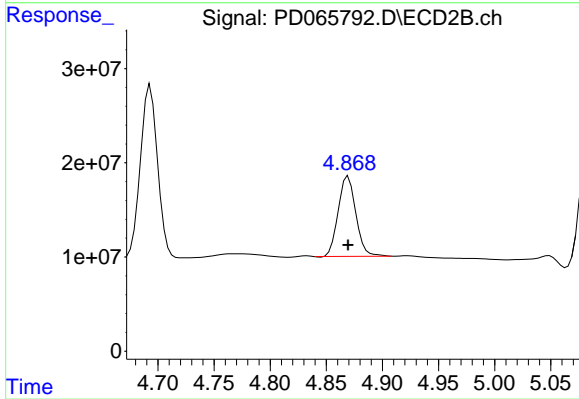
#5 Aldrin

R.T.: 5.501 min  
 Delta R.T.: 0.000 min  
 Response: 170721713  
 Conc: 25.81 ng/ml



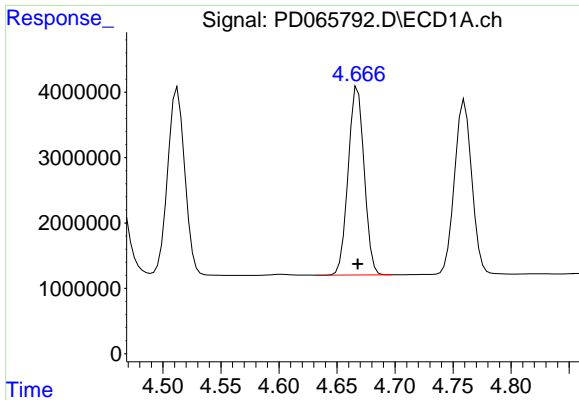
#6 beta-BHC

R.T.: 4.463 min  
 Delta R.T.: 0.000 min  
 Response: 15200645  
 Conc: 27.02 ng/ml



#6 beta-BHC

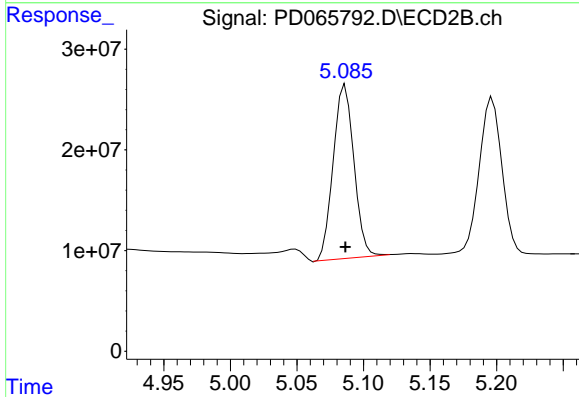
R.T.: 4.870 min  
 Delta R.T.: 0.000 min  
 Response: 93139964  
 Conc: 26.50 ng/ml



#7 delta-BHC

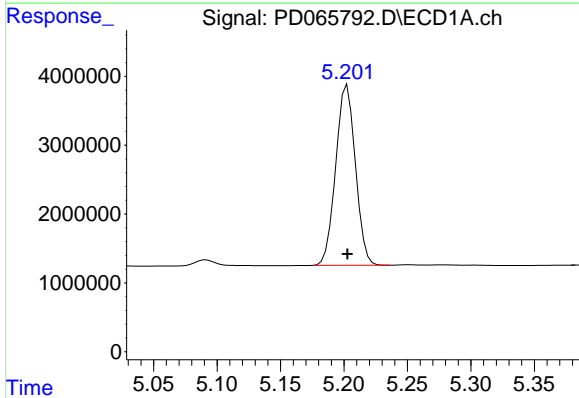
R.T.: 4.668 min  
 Delta R.T.: 0.000 min  
 Response: 27578310  
 Conc: 23.46 ng/ml

Instrument :  
 ECD\_D  
 ClientSampleId :  
 PSTDICC025



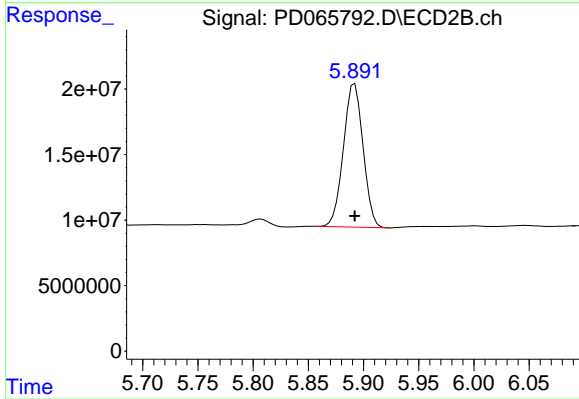
#7 delta-BHC

R.T.: 5.086 min  
 Delta R.T.: 0.000 min  
 Response: 187814736  
 Conc: 25.66 ng/ml



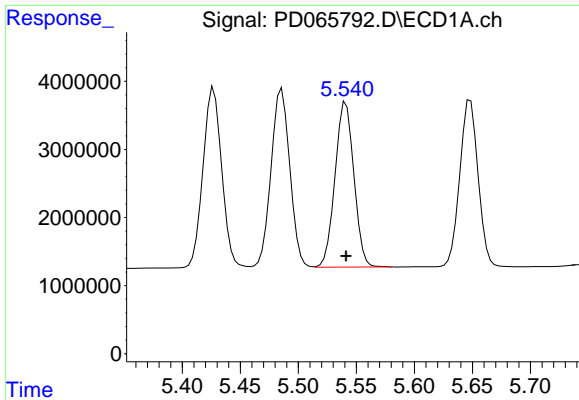
#8 Heptachlor epoxide

R.T.: 5.203 min  
 Delta R.T.: 0.000 min  
 Response: 28275128  
 Conc: 24.82 ng/ml



#8 Heptachlor epoxide

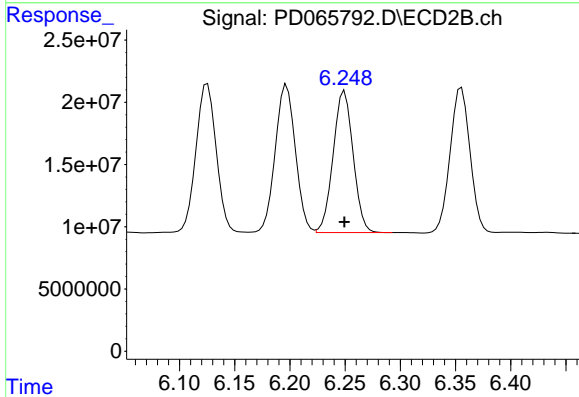
R.T.: 5.892 min  
 Delta R.T.: 0.000 min  
 Response: 135598052  
 Conc: 25.53 ng/ml



#9 Endosulfan I

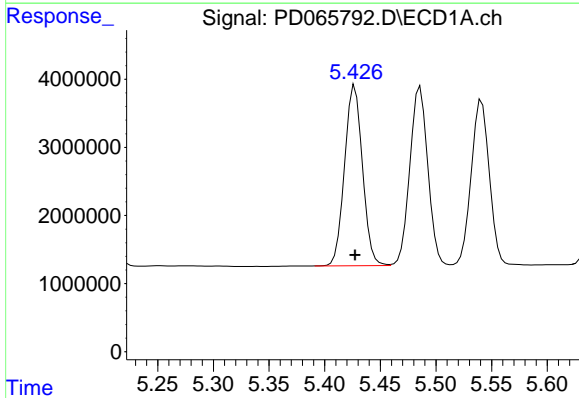
R.T.: 5.541 min  
 Delta R.T.: 0.000 min  
 Response: 27420432  
 Conc: 24.87 ng/ml

Instrument :  
 ECD\_D  
 ClientSampleId :  
 PSTDICC025



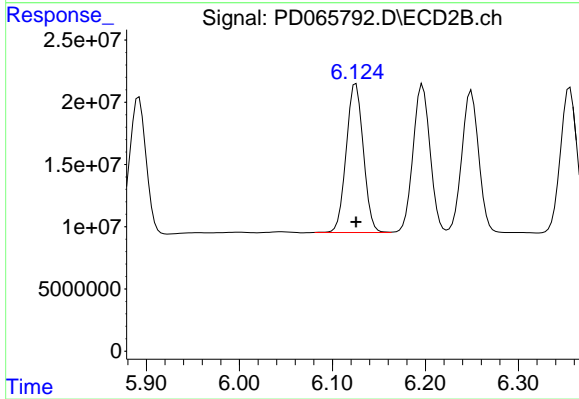
#9 Endosulfan I

R.T.: 6.250 min  
 Delta R.T.: 0.000 min  
 Response: 143430855  
 Conc: 25.92 ng/ml



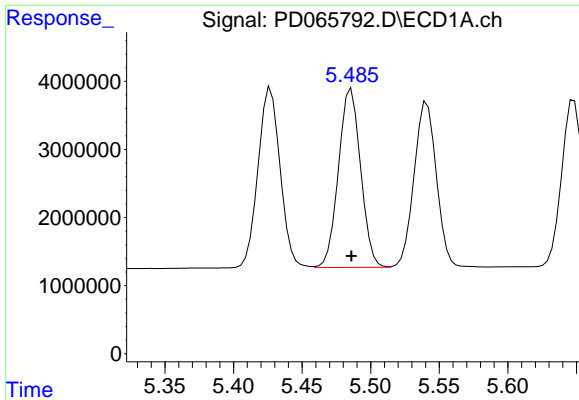
#10 gamma-Chlordane

R.T.: 5.427 min  
 Delta R.T.: 0.000 min  
 Response: 29660857  
 Conc: 24.87 ng/ml



#10 gamma-Chlordane

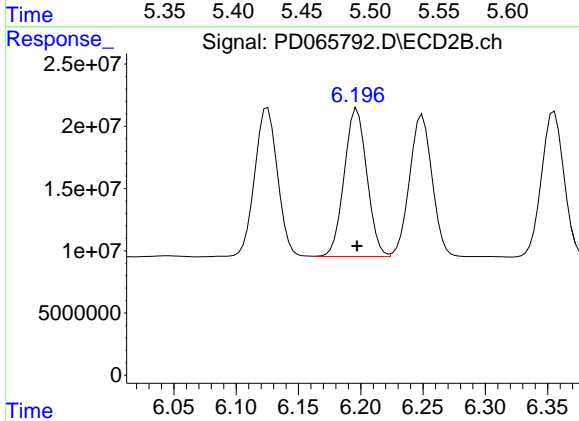
R.T.: 6.125 min  
 Delta R.T.: 0.000 min  
 Response: 152837957  
 Conc: 25.92 ng/ml



#11 alpha-Chlordane

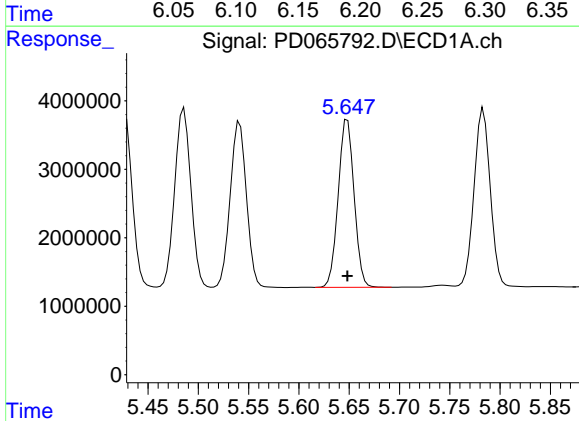
R.T.: 5.486 min  
 Delta R.T.: 0.000 min  
 Response: 29533635  
 Conc: 24.93 ng/ml

Instrument :  
 ECD\_D  
 ClientSampleId :  
 PSTDICC025



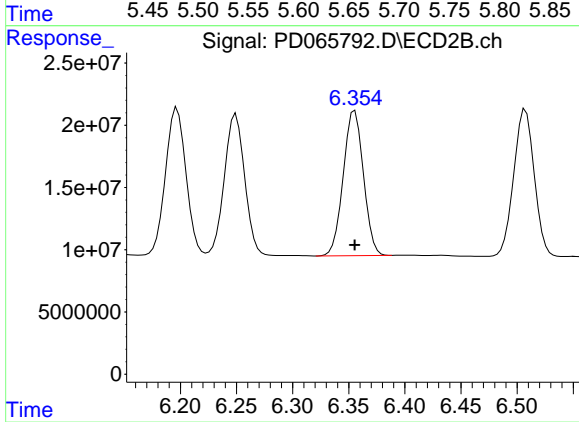
#11 alpha-Chlordane

R.T.: 6.197 min  
 Delta R.T.: 0.000 min  
 Response: 151417369  
 Conc: 25.99 ng/ml



#12 4,4'-DDE

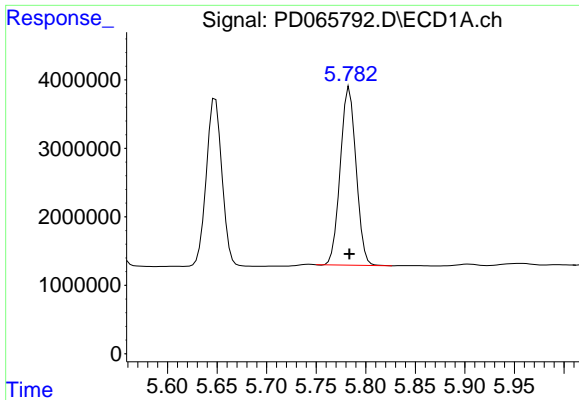
R.T.: 5.648 min  
 Delta R.T.: 0.000 min  
 Response: 26915513  
 Conc: 23.90 ng/ml



#12 4,4'-DDE

R.T.: 6.355 min  
 Delta R.T.: 0.000 min  
 Response: 146033494  
 Conc: 25.41 ng/ml

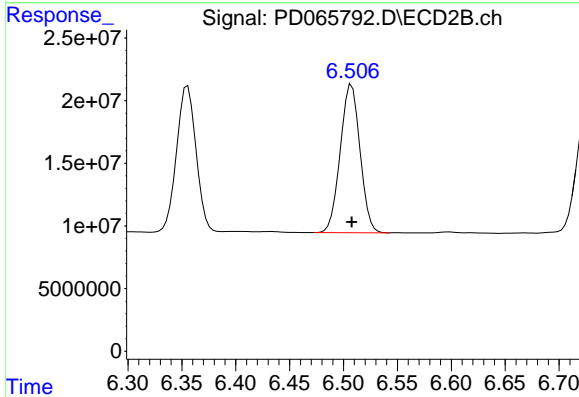




#13 Dieldrin

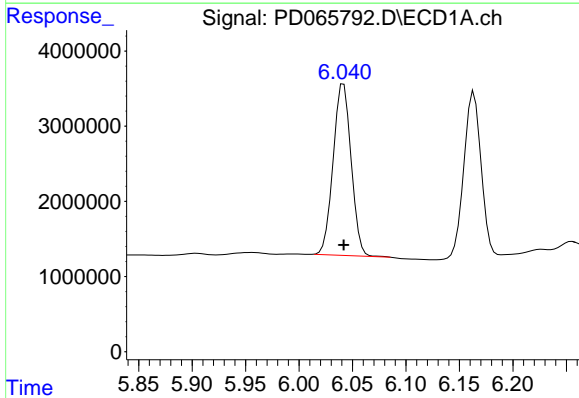
R.T.: 5.784 min  
 Delta R.T.: 0.000 min  
 Response: 28780937  
 Conc: 24.26 ng/ml

Instrument :  
 ECD\_D  
 ClientSampleId :  
 PSTDICC025



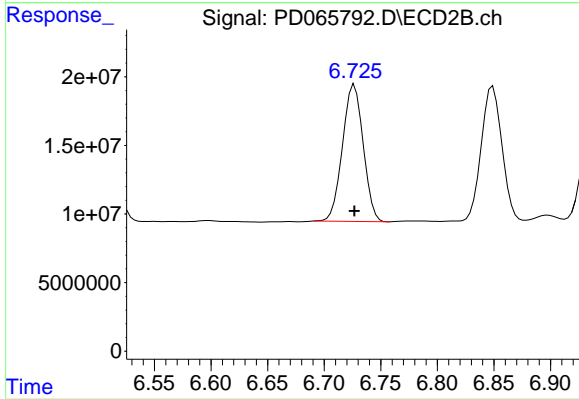
#13 Dieldrin

R.T.: 6.508 min  
 Delta R.T.: 0.000 min  
 Response: 151046756  
 Conc: 25.60 ng/ml



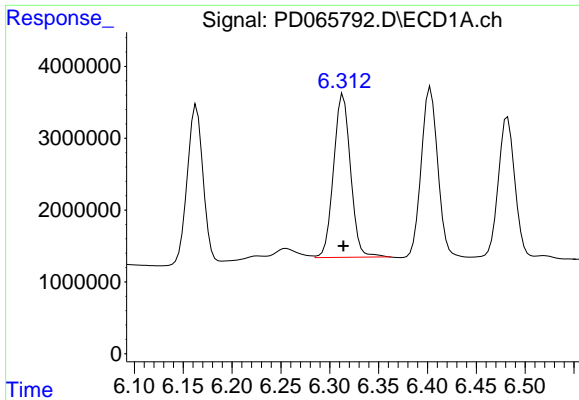
#14 Endrin

R.T.: 6.042 min  
 Delta R.T.: 0.000 min  
 Response: 26695233  
 Conc: 24.59 ng/ml



#14 Endrin

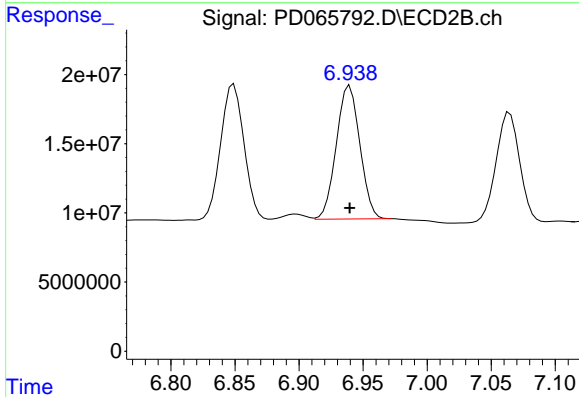
R.T.: 6.727 min  
 Delta R.T.: 0.000 min  
 Response: 127214183  
 Conc: 25.67 ng/ml



#15 Endosulfan II

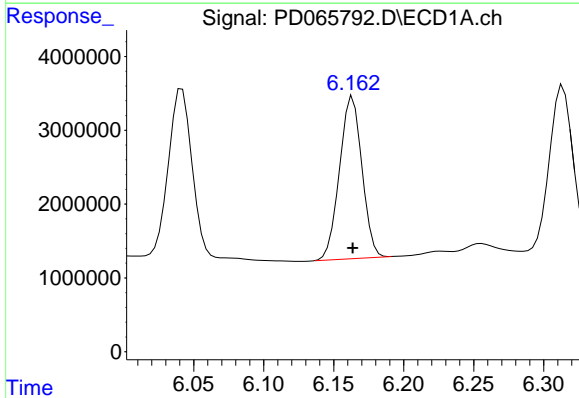
R.T.: 6.314 min  
 Delta R.T.: 0.000 min  
 Response: 27524166  
 Conc: 26.03 ng/ml

Instrument :  
 ECD\_D  
 ClientSampleId :  
 PSTDICC025



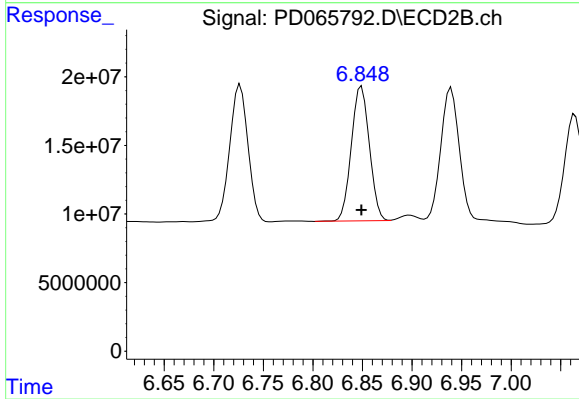
#15 Endosulfan II

R.T.: 6.940 min  
 Delta R.T.: 0.000 min  
 Response: 123298248  
 Conc: 25.58 ng/ml



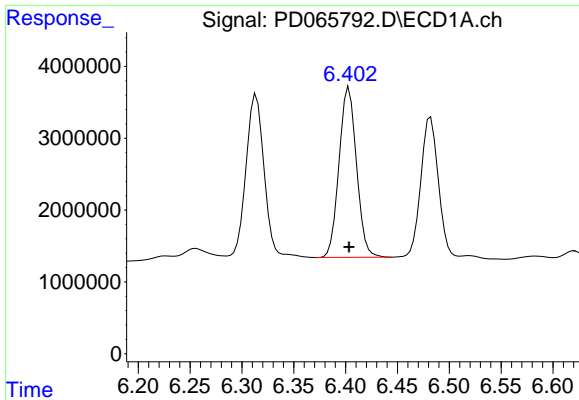
#16 4,4'-DDD

R.T.: 6.164 min  
 Delta R.T.: 0.000 min  
 Response: 24481780  
 Conc: 24.10 ng/ml



#16 4,4'-DDD

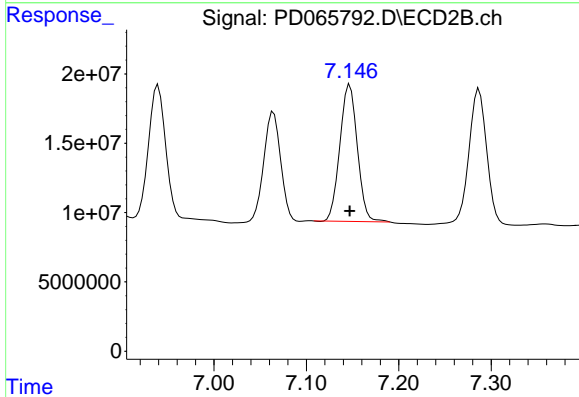
R.T.: 6.849 min  
 Delta R.T.: 0.000 min  
 Response: 124660556  
 Conc: 25.59 ng/ml



#17 4,4'-DDT

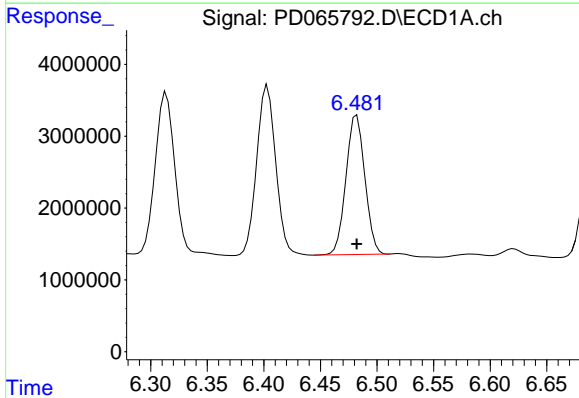
R.T.: 6.403 min  
 Delta R.T.: 0.000 min  
 Response: 27764104  
 Conc: 24.48 ng/ml

Instrument :  
 ECD\_D  
 ClientSampleId :  
 PSTDICC025



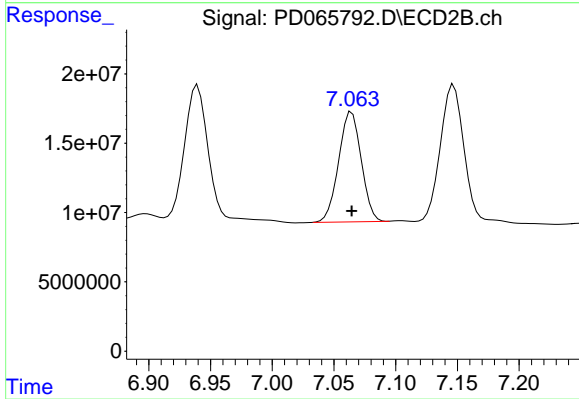
#17 4,4'-DDT

R.T.: 7.147 min  
 Delta R.T.: 0.000 min  
 Response: 129577623  
 Conc: 25.30 ng/ml



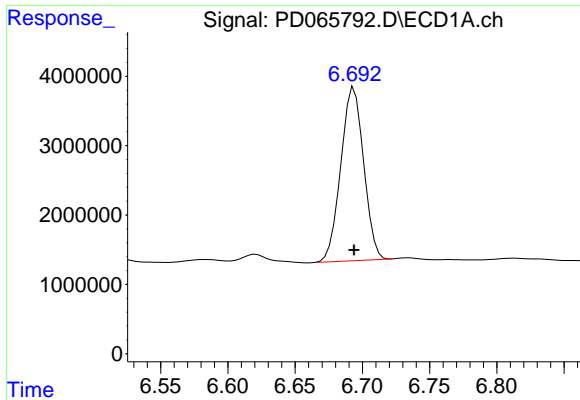
#18 Endrin aldehyde

R.T.: 6.482 min  
 Delta R.T.: 0.000 min  
 Response: 22539511  
 Conc: 25.46 ng/ml



#18 Endrin aldehyde

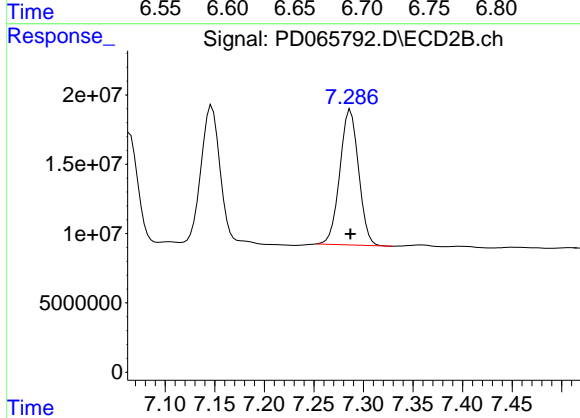
R.T.: 7.064 min  
 Delta R.T.: 0.000 min  
 Response: 101150102  
 Conc: 25.85 ng/ml



#19 Endosulfan Sulfate

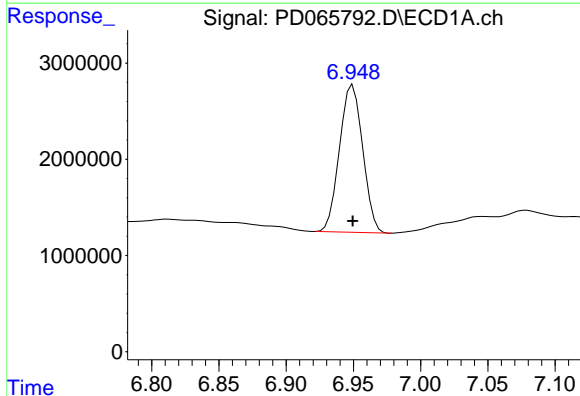
R.T.: 6.694 min  
 Delta R.T.: 0.000 min  
 Response: 29472654  
 Conc: 26.08 ng/ml

Instrument :  
 ECD\_D  
 ClientSampleId :  
 PSTDICC025



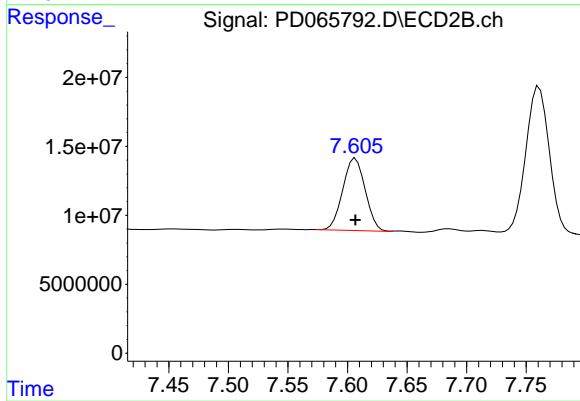
#19 Endosulfan Sulfate

R.T.: 7.287 min  
 Delta R.T.: 0.000 min  
 Response: 127936854  
 Conc: 25.97 ng/ml



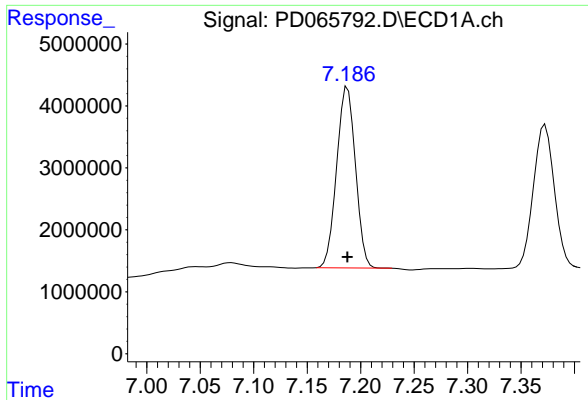
#20 Methoxychlor

R.T.: 6.949 min  
 Delta R.T.: 0.000 min  
 Response: 18359774  
 Conc: 25.96 ng/ml



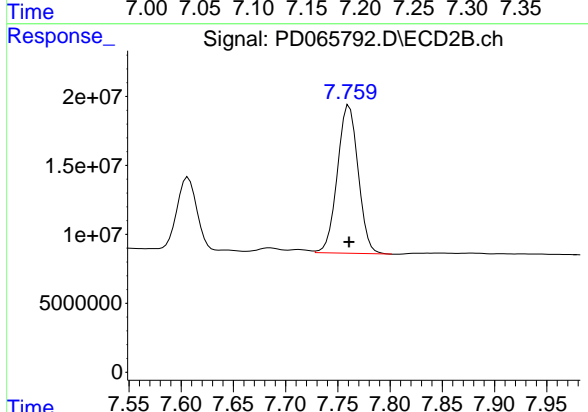
#20 Methoxychlor

R.T.: 7.607 min  
 Delta R.T.: 0.000 min  
 Response: 68937552  
 Conc: 26.04 ng/ml

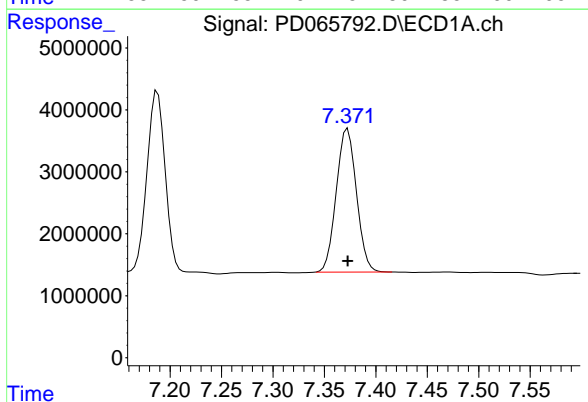


#21 Endrin ketone  
 R.T.: 7.188 min  
 Delta R.T.: 0.000 min  
 Response: 35767498  
 Conc: 25.29 ng/ml

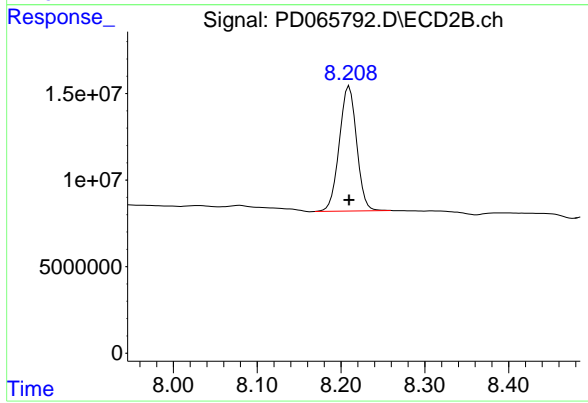
Instrument :  
 ECD\_D  
 ClientSampleId :  
 PSTDICC025



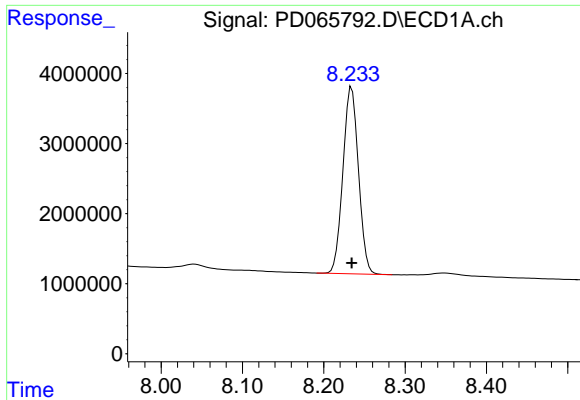
#21 Endrin ketone  
 R.T.: 7.761 min  
 Delta R.T.: 0.000 min  
 Response: 148297666  
 Conc: 26.35 ng/ml



#22 Mirex  
 R.T.: 7.373 min  
 Delta R.T.: 0.000 min  
 Response: 31631681  
 Conc: 27.90 ng/ml



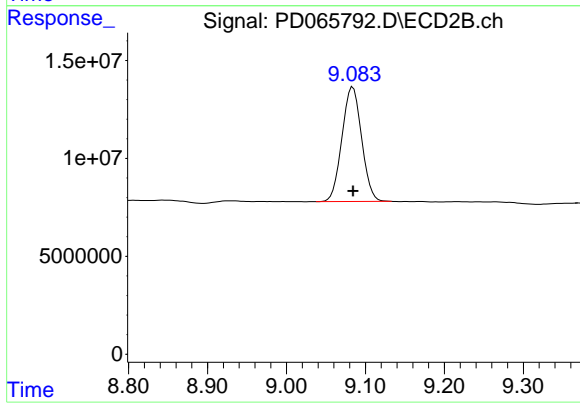
#22 Mirex  
 R.T.: 8.210 min  
 Delta R.T.: 0.000 min  
 Response: 103901449  
 Conc: 27.03 ng/ml



#28 Decachlorobiphenyl

R.T.: 8.234 min  
Delta R.T.: 0.000 min  
Response: 35305307  
Conc: 26.63 ng/ml

Instrument :  
ECD\_D  
ClientSampleId :  
PSTDICC025



#28 Decachlorobiphenyl

R.T.: 9.084 min  
Delta R.T.: 0.000 min  
Response: 101052954  
Conc: 26.22 ng/ml