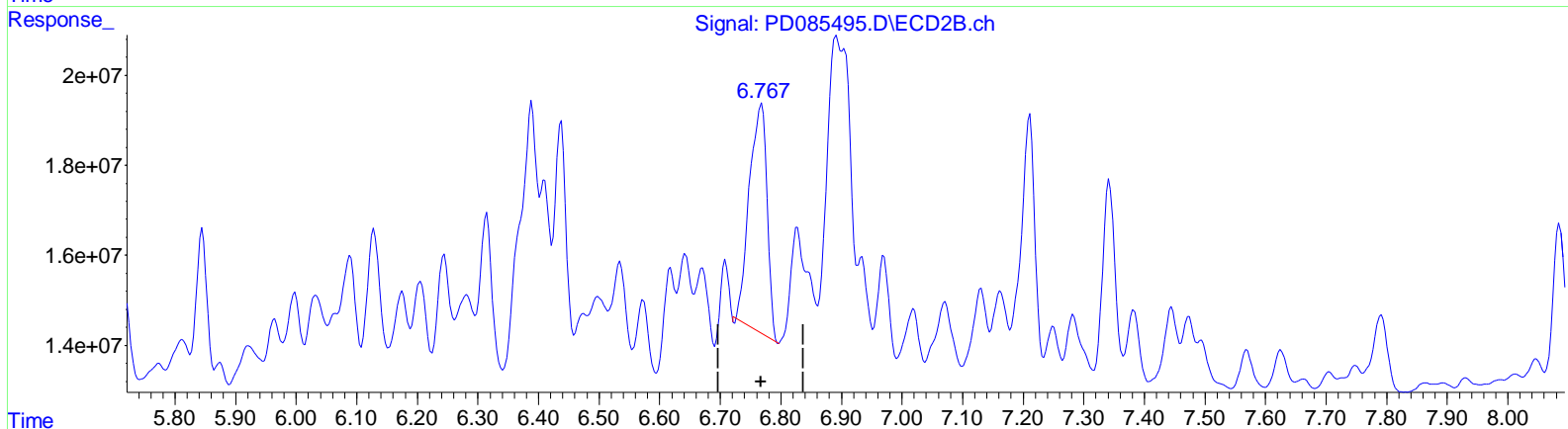
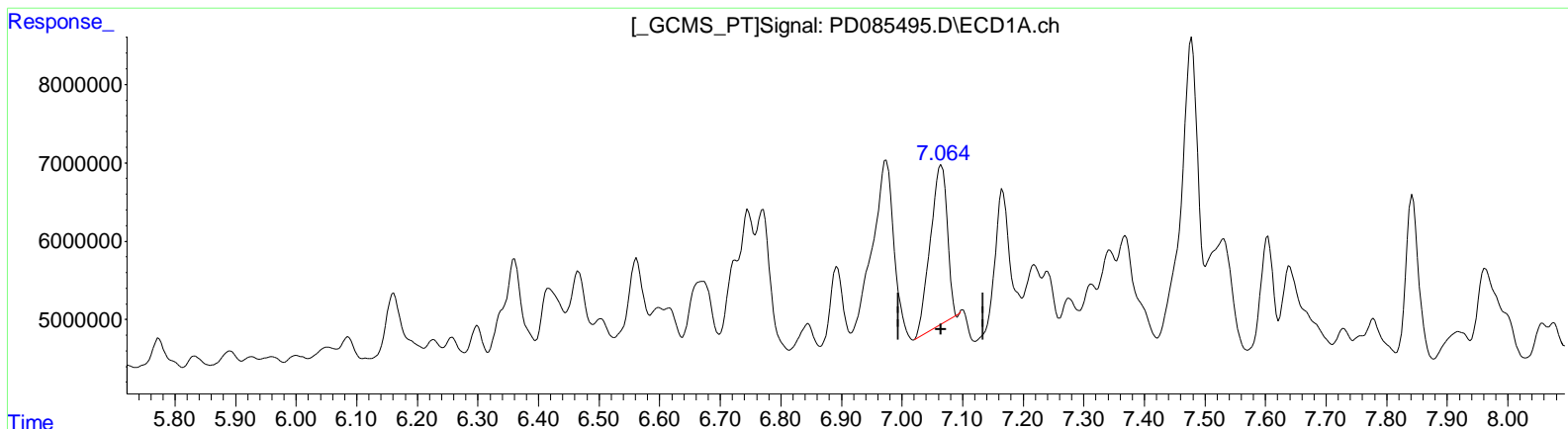


Data Path : Z:\pestpcbsrv\HPCHEM1\ECD_D\Data\PD092224\
 Data File : PD085495.D
 Signal(s) : Signal #1: ECD1A.ch Signal #2: ECD2B.ch
 Acq On : 22 Sep 2024 19:19
 Operator : ARVAJ
 Sample : TOXAPH201
 Misc :
 ALS Vial : 5 Sample Multiplier: 1

Integration File signal 1: autoint1.e
 Integration File signal 2: autoint2.e
 Quant Time: Sep 23 02:14:00 2024
 Quant Method : Z:\pestpcbsrv\HPCHEM1\ECD_D\Method\PD092224CLP.M
 Quant Title : GC Extractables
 QLast Update : Mon Sep 23 02:13:52 2024
 Response via : Initial Calibration
 Integrator: ChemStation

Volume Inj. : 1 µl
 Signal #1 Phase : ZB-MR1 Signal #2 Phase: ZB-MR2
 Signal #1 Info : 30M x 0.32mm x 0.5 Signal #2 Info : 30M x 0.32mm x 0.25µm



QEdit

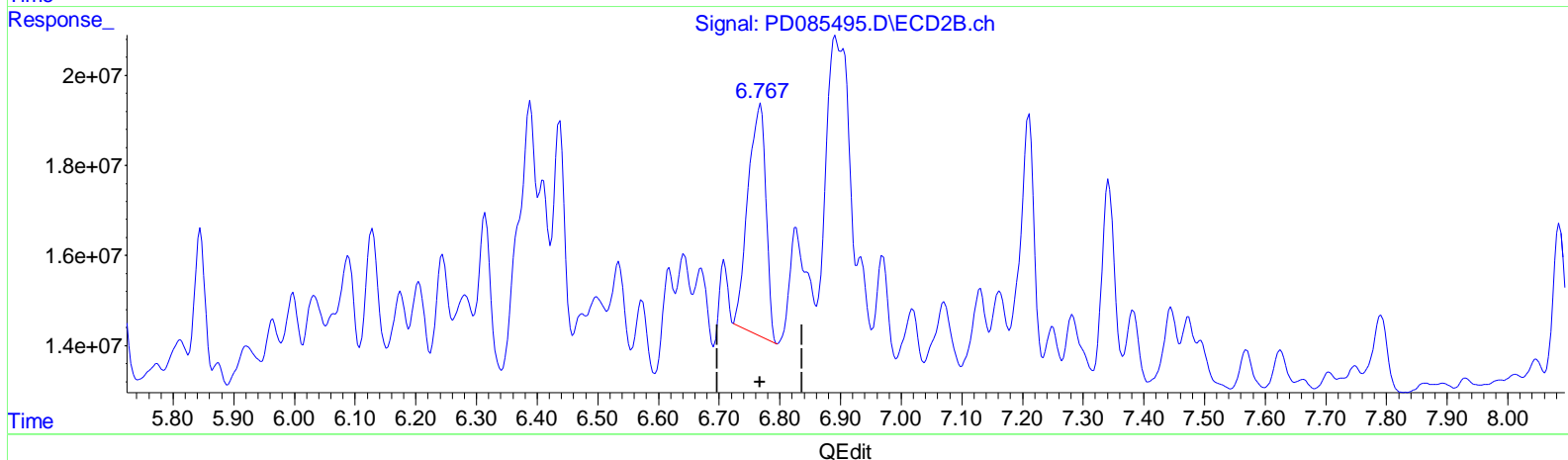
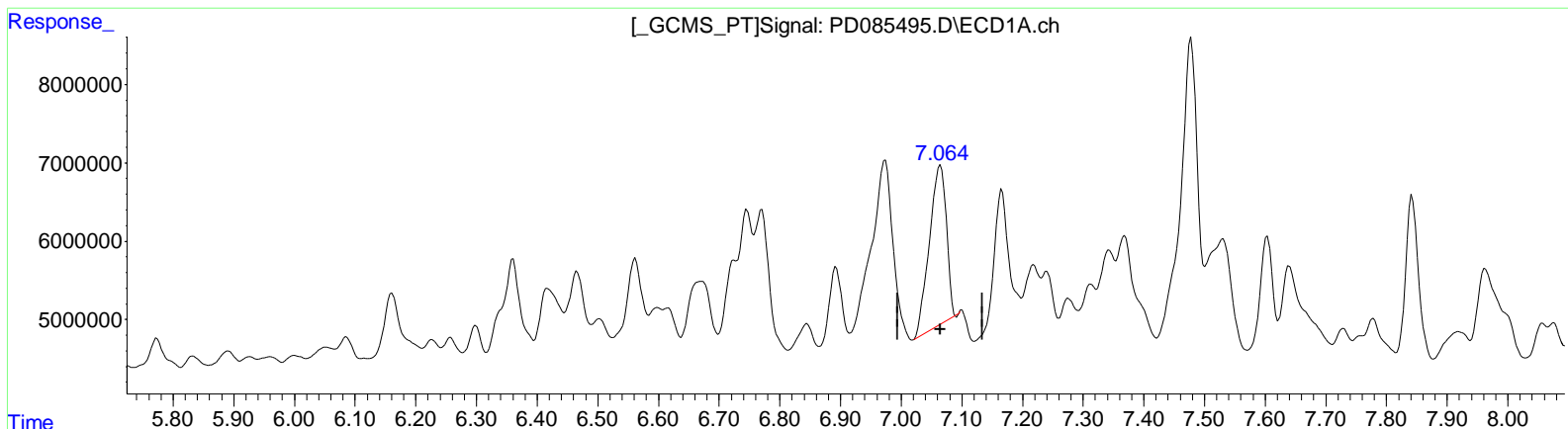
(25) Toxaphene-4
 7.064min 1007.111 ng/ml
 response 39453055

(25) Toxaphene-4 #2
 6.768min 985.071 ng/ml
 response 102320662

Data Path : Z:\pestpcbsrv\HPCHEM1\ECD_D\Data\PD092224\
 Data File : PD085495.D
 Signal(s) : Signal #1: ECD1A.ch Signal #2: ECD2B.ch
 Acq On : 22 Sep 2024 19:19
 Operator : ARVAJ
 Sample : TOXAPH201
 Misc :
 ALS Vial : 5 Sample Multiplier: 1

Integration File signal 1: autoint1.e
 Integration File signal 2: autoint2.e
 Quant Time: Sep 23 02:14:00 2024
 Quant Method : Z:\pestpcbsrv\HPCHEM1\ECD_D\Method\PD092224CLP.M
 Quant Title : GC Extractables
 QLast Update : Mon Sep 23 02:13:52 2024
 Response via : Initial Calibration
 Integrator: ChemStation

Volume Inj. : 1 µl
 Signal #1 Phase : ZB-MR1 Signal #2 Phase: ZB-MR2
 Signal #1 Info : 30M x 0.32mm x0.5 Signal #2 Info : 30M x 0.32mm x 0.25µm



(25) Toxaphene-4
 7.064min 1007.111 ng/ml
 response 39453055

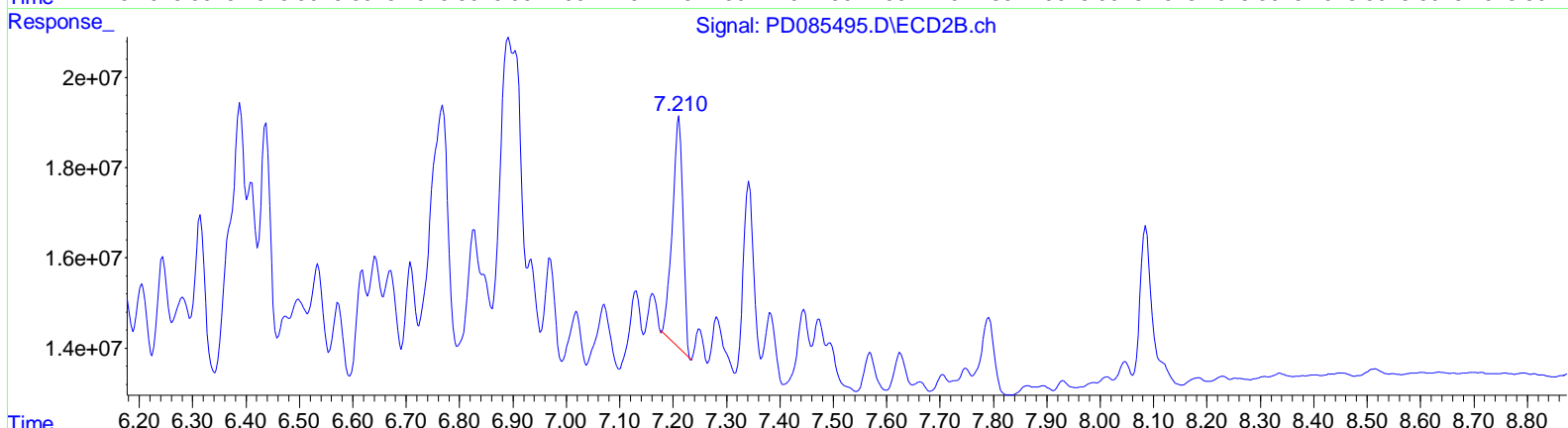
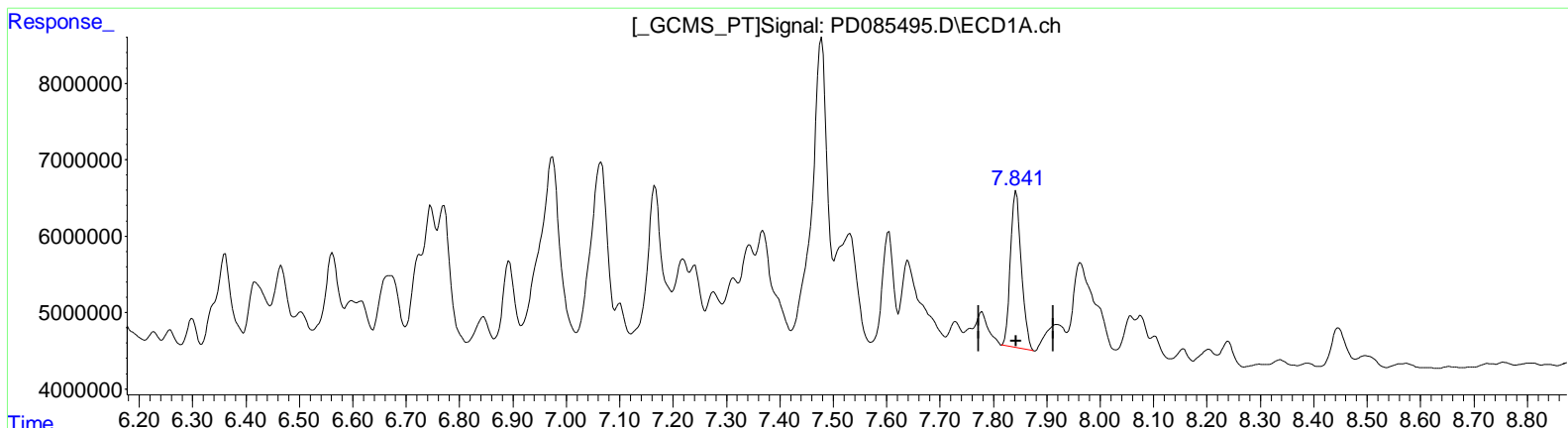
(25) Toxaphene-4 #2
 6.767min 1014.909 ng/ml m
 response 105419960

(+) = Expected Retention Time

Data Path : Z:\pestpcbsrv\HPCHEM1\ECD_D\Data\PD092224\
 Data File : PD085495.D
 Signal(s) : Signal #1: ECD1A.ch Signal #2: ECD2B.ch
 Acq On : 22 Sep 2024 19:19
 Operator : ARVAJ
 Sample : TOXAPH201
 Misc :
 ALS Vial : 5 Sample Multiplier: 1

Integration File signal 1: autoint1.e
 Integration File signal 2: autoint2.e
 Quant Time: Sep 23 02:14:00 2024
 Quant Method : Z:\pestpcbsrv\HPCHEM1\ECD_D\Method\PD092224CLP.M
 Quant Title : GC Extractables
 QLast Update : Mon Sep 23 02:13:52 2024
 Response via : Initial Calibration
 Integrator: ChemStation

Volume Inj. : 1 µl
 Signal #1 Phase : ZB-MR1 Signal #2 Phase: ZB-MR2
 Signal #1 Info : 30M x 0.32mm x 0.5 Signal #2 Info : 30M x 0.32mm x 0.25µm



QEdit

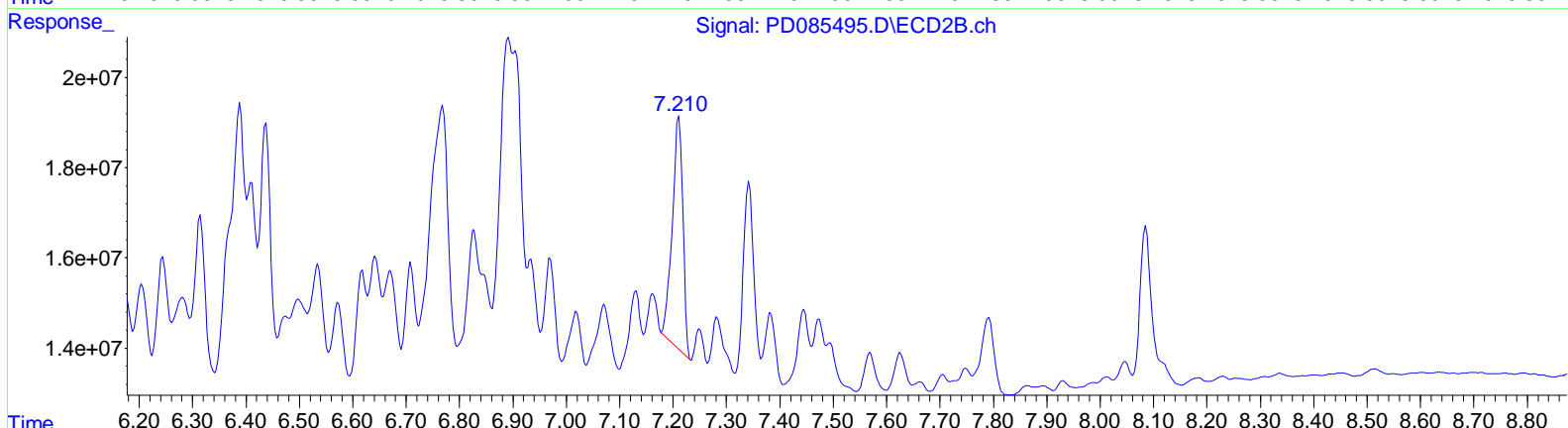
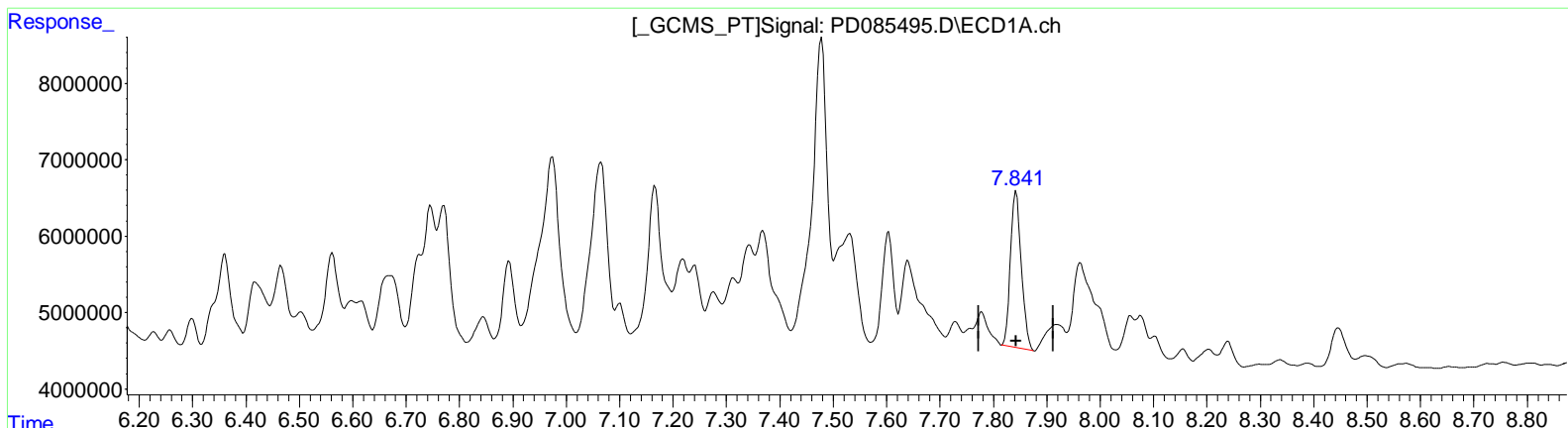
(26) Toxaphene-5
 7.843min 1019.980 ng/ml
 response 28806441

(26) Toxaphene-5 #2
 7.211min 999.436 ng/ml
 response 69263682

Data Path : Z:\pestpcbsrv\HPCHEM1\ECD_D\Data\PD092224\
 Data File : PD085495.D
 Signal(s) : Signal #1: ECD1A.ch Signal #2: ECD2B.ch
 Acq On : 22 Sep 2024 19:19
 Operator : ARVAJ
 Sample : TOXAPH201
 Misc :
 ALS Vial : 5 Sample Multiplier: 1

Integration File signal 1: autoint1.e
 Integration File signal 2: autoint2.e
 Quant Time: Sep 23 02:14:00 2024
 Quant Method : Z:\pestpcbsrv\HPCHEM1\ECD_D\Method\PD092224CLP.M
 Quant Title : GC Extractables
 QLast Update : Mon Sep 23 02:13:52 2024
 Response via : Initial Calibration
 Integrator: ChemStation

Volume Inj. : 1 µl
 Signal #1 Phase : ZB-MR1 Signal #2 Phase: ZB-MR2
 Signal #1 Info : 30M x 0.32mm x 0.5 Signal #2 Info : 30M x 0.32mm x 0.25µm



QEdit

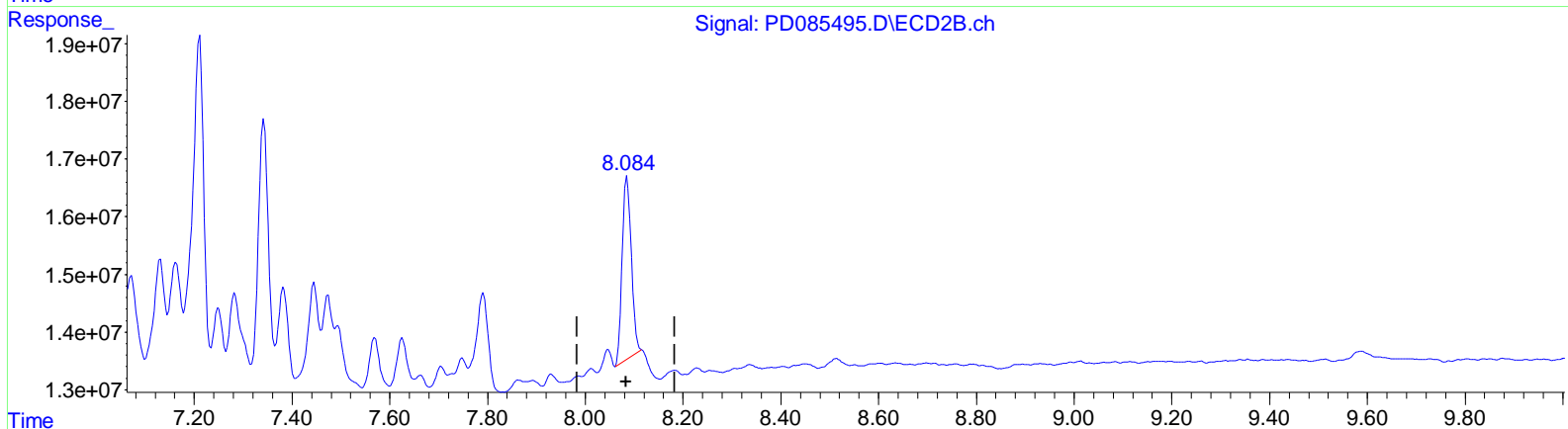
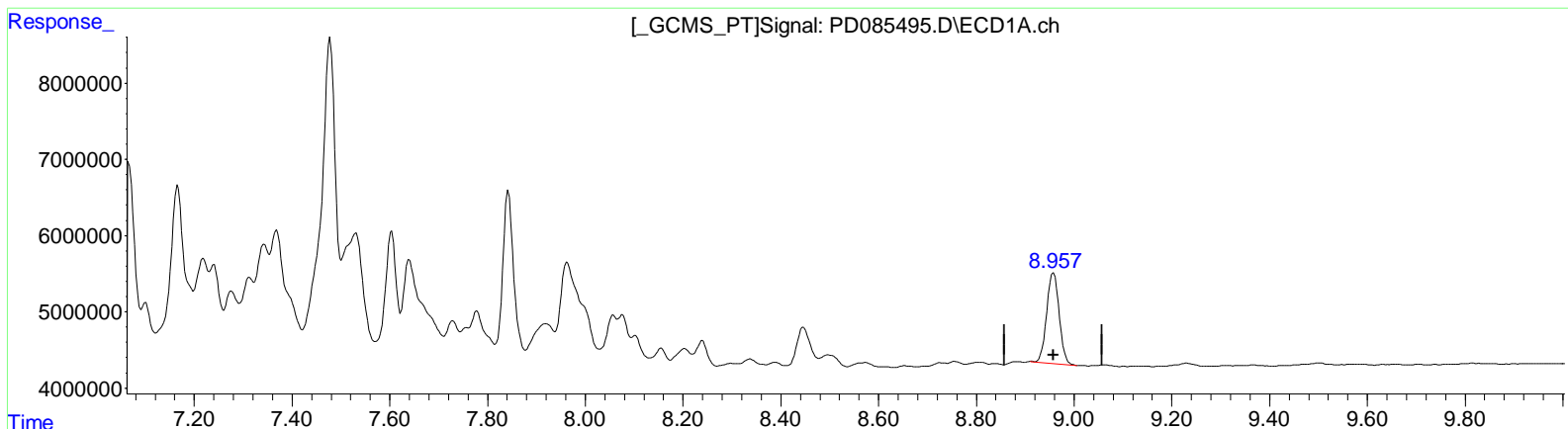
(26) Toxaphene-5
 7.843min 1019.980 ng/ml
 response 28806441

(26) Toxaphene-5 #2
 7.210min 1029.030 ng/ml m
 response 71314654

Data Path : Z:\pestpcbsrv\HPCHEM1\ECD_D\Data\PD092224\
 Data File : PD085495.D
 Signal(s) : Signal #1: ECD1A.ch Signal #2: ECD2B.ch
 Acq On : 22 Sep 2024 19:19
 Operator : ARVAJ
 Sample : TOXAPH201
 Misc :
 ALS Vial : 5 Sample Multiplier: 1

Integration File signal 1: autoint1.e
 Integration File signal 2: autoint2.e
 Quant Time: Sep 23 02:14:00 2024
 Quant Method : Z:\pestpcbsrv\HPCHEM1\ECD_D\Method\PD092224CLP.M
 Quant Title : GC Extractables
 QLast Update : Mon Sep 23 02:13:52 2024
 Response via : Initial Calibration
 Integrator: ChemStation

Volume Inj. : 1 µl
 Signal #1 Phase : ZB-MR1 Signal #2 Phase: ZB-MR2
 Signal #1 Info : 30M x 0.32mm x 0.5 Signal #2 Info : 30M x 0.32mm x 0.25µm



QEdit

(27) Decachlorobiphenyl (SA)

8.958min 20.494 ng/ml

response 21024702

(27) Decachlorobiphenyl #2 (SA)

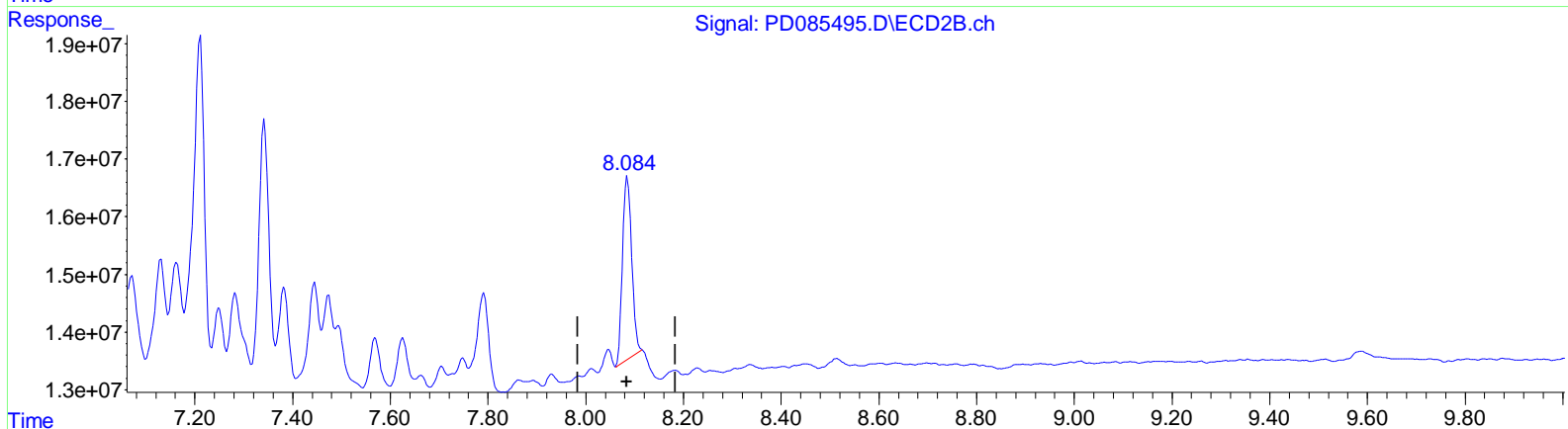
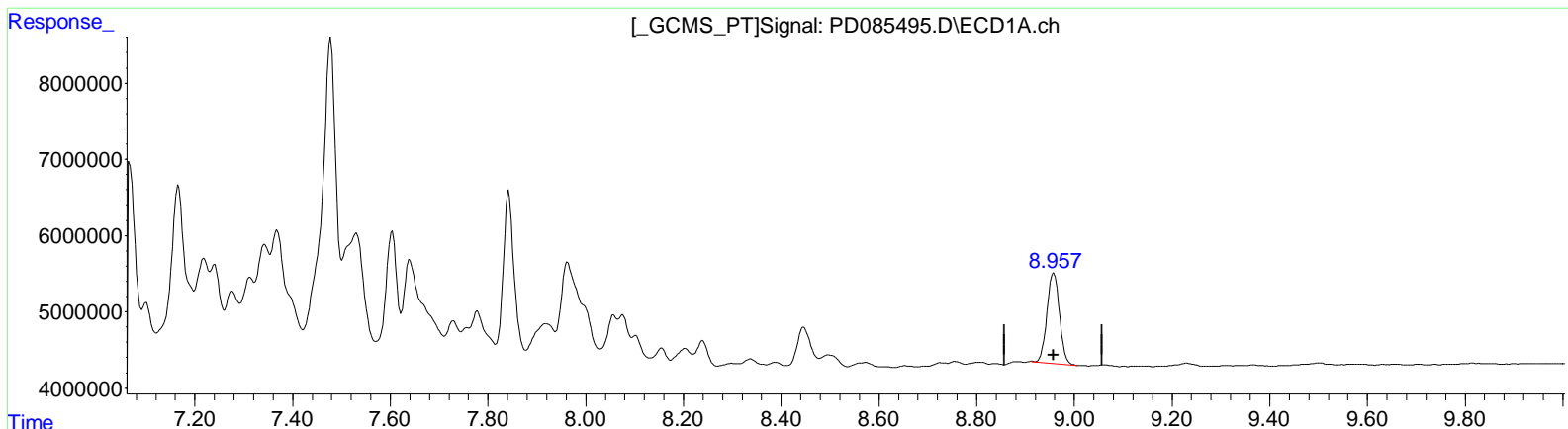
8.085min 20.636 ng/ml

response 41656064

Data Path : Z:\pestpcbsrv\HPCHEM1\ECD_D\Data\PD092224\
 Data File : PD085495.D
 Signal(s) : Signal #1: ECD1A.ch Signal #2: ECD2B.ch
 Acq On : 22 Sep 2024 19:19
 Operator : ARVAJ
 Sample : TOXAPH201
 Misc :
 ALS Vial : 5 Sample Multiplier: 1

Integration File signal 1: autoint1.e
 Integration File signal 2: autoint2.e
 Quant Time: Sep 23 02:14:00 2024
 Quant Method : Z:\pestpcbsrv\HPCHEM1\ECD_D\Method\PD092224CLP.M
 Quant Title : GC Extractables
 QLast Update : Mon Sep 23 02:13:52 2024
 Response via : Initial Calibration
 Integrator: ChemStation

Volume Inj. : 1 µl
 Signal #1 Phase : ZB-MR1 Signal #2 Phase: ZB-MR2
 Signal #1 Info : 30M x 0.32mm x 0.5 Signal #2 Info : 30M x 0.32mm x 0.25µm



QEdit

(27) Decachlorobiphenyl (SA)

8.958min 20.494 ng/ml

response 21024702

(27) Decachlorobiphenyl #2 (SA)

8.084min 20.548 ng/ml m

response 41477775

Data Path : Z:\pestpcbsrv\HPCHEM1\ECD_D\Data\PD092224\
 Data File : PD085495.D
 Signal(s) : Signal #1: ECD1A.ch Signal #2: ECD2B.ch
 Acq On : 22 Sep 2024 19:19
 Operator : AR\AJ
 Sample : TOXAPH201
 Misc :
 ALS Vial : 5 Sample Multiplier: 1

Integration File signal 1: autoint1.e
 Integration File signal 2: autoint2.e
 Quant Time: Sep 23 02:14:00 2024
 Quant Method : Z:\pestpcbsrv\HPCHEM1\ECD_D\Method\PD092224CLP.M
 Quant Title : GC Extractables
 QLast Update : Mon Sep 23 02:13:52 2024
 Response via : Initial Calibration
 Integrator: ChemStation

Volume Inj. : 1 µl
 Signal #1 Phase : ZB-MR1 Signal #2 Phase: ZB-MR2
 Signal #1 Info : 30M x 0.32mm x 0.5 Signal #2 Info : 30M x 0.32mm x 0.25µm

Compound	RT#1	RT#2	Resp#1	Resp#2	ng/ml	ng/ml

System Monitoring Compounds						
1) SA Tetrachlo...	3.487	2.891	14791946	43403269	10.258	10.295
27) SA Decachlor...	8.958	8.084	21024702	41477775	20.494	20.548m
Target Compounds						
22) Toxaphene-1	5.773	5.154	5929724	29490751	991.265	1015.380
23) Toxaphene-2	6.360	5.482	21229155	31488353	1034.695	1017.983
24) Toxaphene-3	6.973	5.845	54942208	31056596	1032.287	1024.328
25) Toxaphene-4	7.064	6.767	39453055	105.4E6	1007.111	1014.909m
26) Toxaphene-5	7.843	7.210	28806441	71314654	1019.980	1029.030m

(f)=RT Delta > 1/2 Window (#)=Amounts differ by > 25% (m)=manual int.

Data Path : Z:\pestpcbsrv\HPCHEM1\ECD_D\Data\PD092224\
 Data File : PD085495.D
 Signal(s) : Signal #1: ECD1A.ch Signal #2: ECD2B.ch
 Acq On : 22 Sep 2024 19:19
 Operator : ARVAJ
 Sample : TOXAPH201
 Misc :
 ALS Vial : 5 Sample Multiplier: 1

Integration File signal 1: autoint1.e
 Integration File signal 2: autoint2.e
 Quant Time: Sep 23 02:14:00 2024
 Quant Method : Z:\pestpcbsrv\HPCHEM1\ECD_D\Method\PD092224CLP.M
 Quant Title : GC Extractables
 QLast Update : Mon Sep 23 02:13:52 2024
 Response via : Initial Calibration
 Integrator: ChemStation

Volume Inj. : 1 µl
 Signal #1 Phase : ZB-MR1 Signal #2 Phase: ZB-MR2
 Signal #1 Info : 30M x 0.32mm x 0.5 Signal #2 Info : 30M x 0.32mm x 0.25µm

