

Data Path : Z:\pestpcbsrv\HPCHEM1\ECD\_D\Data\PD092318\  
 Data File : PD049359.D  
 Signal(s) : Signal #1: ECD1A.CH Signal #2: ECD2B.CH  
 Acq On : 22 Sep 2018 2:15  
 Operator : AJ\SJ  
 Sample : PCHLORICC1000  
 Misc :  
 ALS Vial : 28 Sample Multiplier: 1

Instrument :  
 ECD\_D  
 ClientSampleId :  
 PCHLORICC1000

Integration File signal 1: autoint1.e  
 Integration File signal 2: autoint2.e  
 Quant Time: Sep 24 01:33:31 2018  
 Quant Method : Z:\pestpcbsrv\HPCHEM1\ECD\_D\Method\PD092318.M  
 Quant Title : GC Extractables  
 QLast Update : Mon Sep 24 01:33:32 2018  
 Response via : Initial Calibration  
 Integrator: ChemStation 6890 Scale Mode: Large solvent peaks clipped

Volume Inj. : 2 µl  
 Signal #1 Phase : ZB-MR2 Signal #2 Phase: ZB-MR1  
 Signal #1 Info : 30M x 0.32mm x0.2 Signal #2 Info : 30M x 0.32mm x 0.50µm

Compound	RT#1	RT#2	Resp#1	Resp#2	ng/ml	ng/ml
-----						
System Monitoring Compounds						
1) SA Tetrachlo...	3.295	3.913	112.6E6	872.5E6	100.589	97.812
28) SA Decachlor...	7.952	8.903	107.8E6	325.9E6	98.563	98.377
Target Compounds						
23) Chlordane-1	4.133	4.891	48955248	408.1E6	1001.168	980.029
24) Chlordane-2	4.620	5.351	51554408	380.8E6	986.986	969.178
25) Chlordane-3	5.171	5.987	287.2E6	1276.4E6	1726.904	980.834 #
26) Chlordane-4	5.228	6.063	155.1E6	1476.1E6	1007.424	976.727
27) Chlordane-5	6.048	6.852	54035252	299.1E6	993.774	985.350
-----						

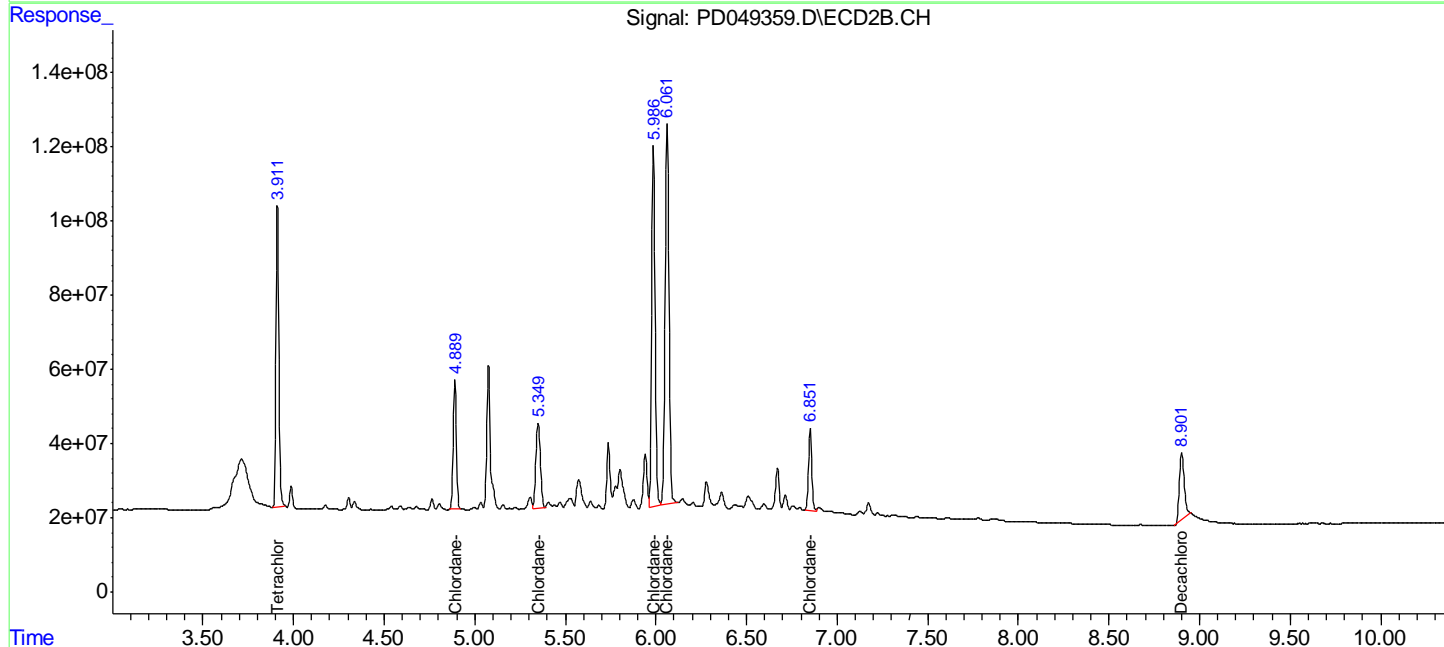
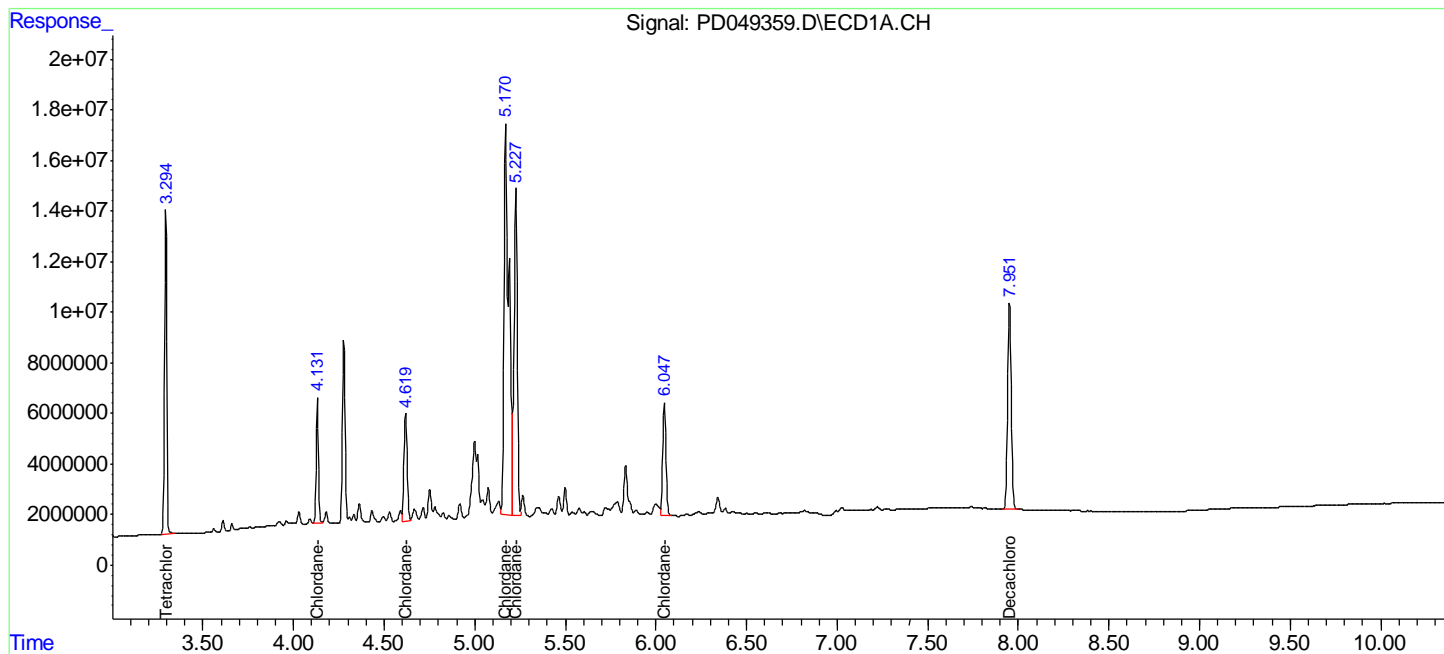
(f)=RT Delta > 1/2 Window (#)=Amounts differ by > 25% (m)=manual int.

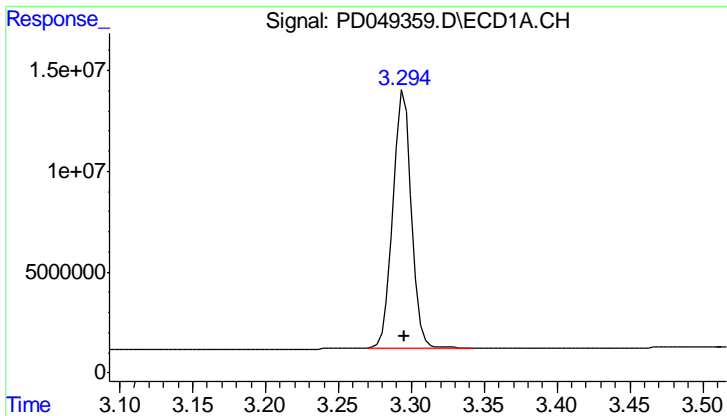
Data Path : Z:\pestpcbsrv\HPCHEM1\ECD\_D\Data\PD092318\  
 Data File : PD049359.D  
 Signal(s) : Signal #1: ECD1A.CH Signal #2: ECD2B.CH  
 Acq On : 22 Sep 2018 2:15  
 Operator : AJ\SJ  
 Sample : PCHLORICC1000  
 Misc :  
 ALS Vial : 28 Sample Multiplier: 1

Instrument :  
 ECD\_D  
 ClientSampleID :  
 PCHLORICC1000

Integration File signal 1: autoint1.e  
 Integration File signal 2: autoint2.e  
 Quant Time: Sep 24 01:33:31 2018  
 Quant Method : Z:\pestpcbsrv\HPCHEM1\ECD\_D\Method\PD092318.M  
 Quant Title : GC Extractables  
 QLast Update : Mon Sep 24 01:33:32 2018  
 Response via : Initial Calibration  
 Integrator: ChemStation 6890 Scale Mode: Large solvent peaks clipped

Volume Inj. : 2 µl  
 Signal #1 Phase : ZB-MR2 Signal #2 Phase: ZB-MR1  
 Signal #1 Info : 30M x 0.32mm x0.2 Signal #2 Info : 30M x 0.32mm x 0.50µm

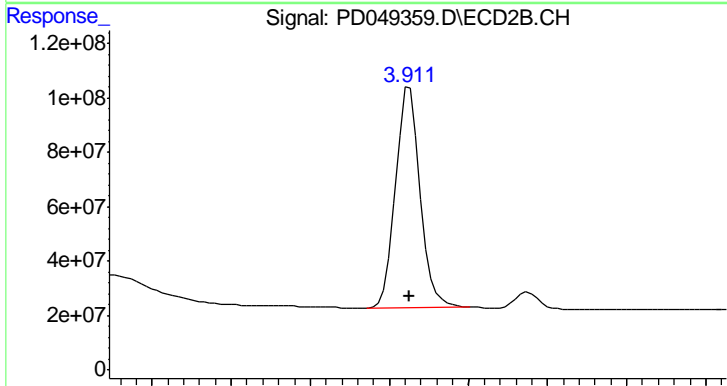




#1 Tetrachloro-m-xylene

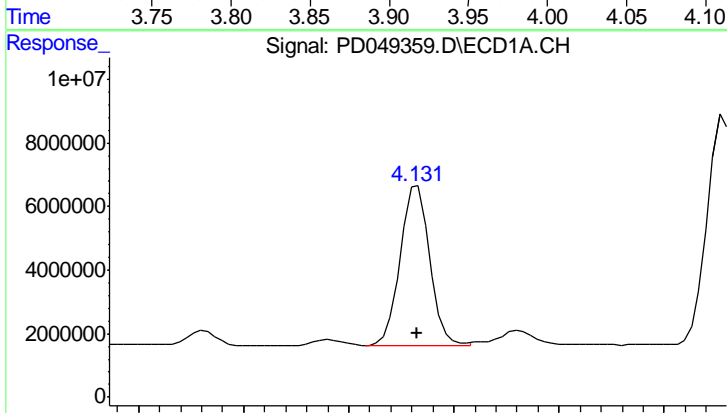
R.T.: 3.295 min  
 Delta R.T.: 0.000 min  
 Response: 112615816  
 Conc: 100.59 ng/ml

Instrument :  
 ECD\_D  
 ClientSampleId :  
 PCHLORICC1000



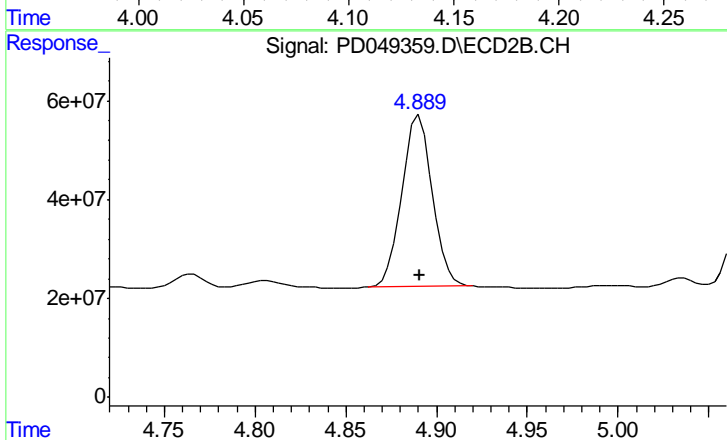
#1 Tetrachloro-m-xylene

R.T.: 3.913 min  
 Delta R.T.: 0.000 min  
 Response: 872498305  
 Conc: 97.81 ng/ml



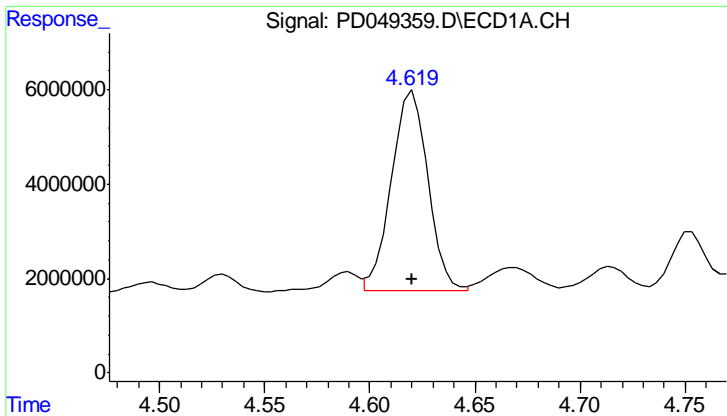
#23 Chlordane-1

R.T.: 4.133 min  
 Delta R.T.: 0.000 min  
 Response: 48955248  
 Conc: 1001.17 ng/ml



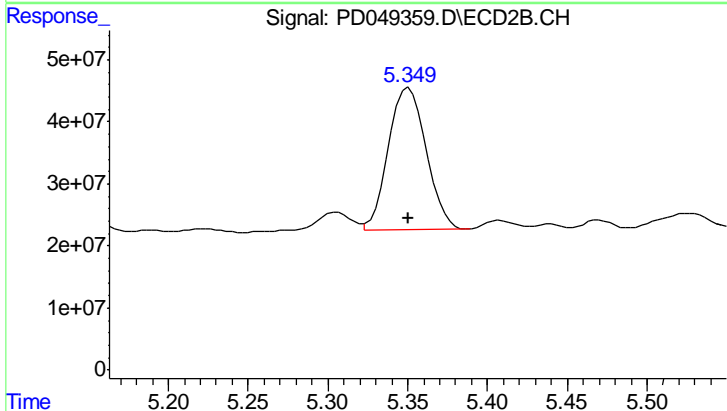
#23 Chlordane-1

R.T.: 4.891 min  
 Delta R.T.: 0.000 min  
 Response: 408078535  
 Conc: 980.03 ng/ml

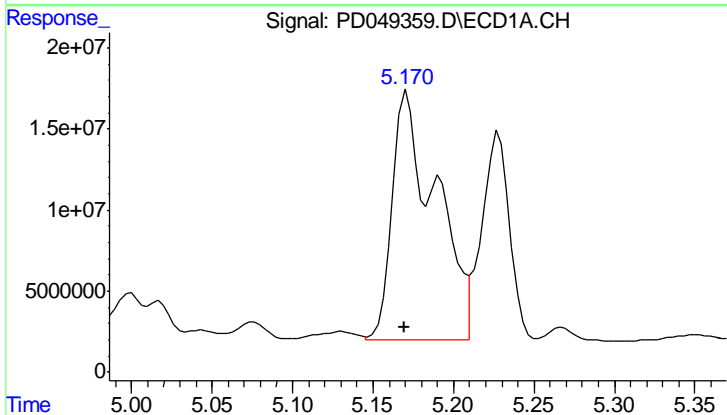


#24 Chlordane-2  
 R.T.: 4.620 min  
 Delta R.T.: 0.000 min  
 Response: 51554408  
 Conc: 986.99 ng/ml

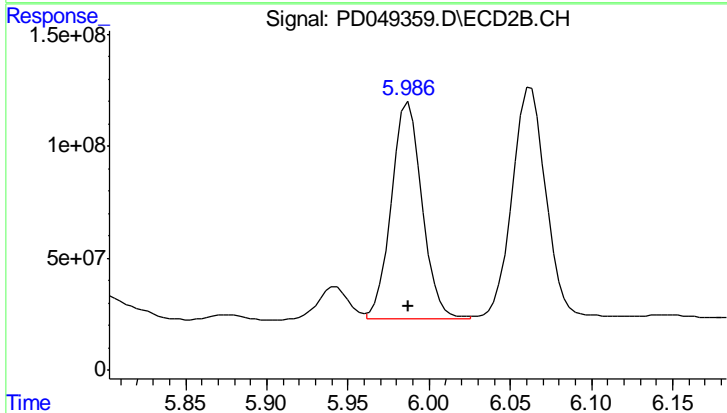
Instrument :  
 ECD\_D  
 ClientSampleId :  
 PCHLORICC1000



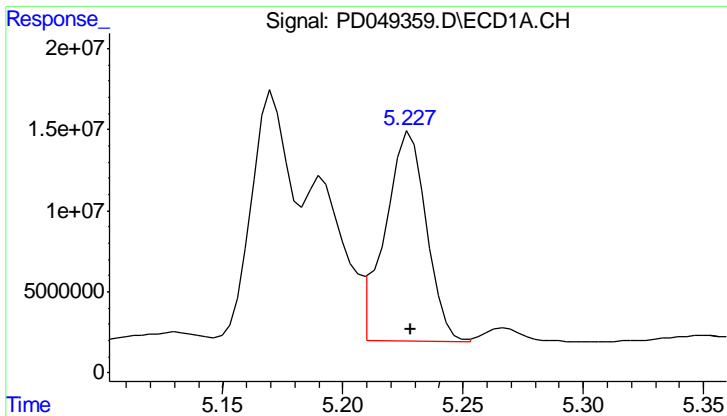
#24 Chlordane-2  
 R.T.: 5.351 min  
 Delta R.T.: 0.000 min  
 Response: 380798828  
 Conc: 969.18 ng/ml



#25 Chlordane-3  
 R.T.: 5.171 min  
 Delta R.T.: 0.002 min  
 Response: 287153321  
 Conc: 1726.90 ng/ml

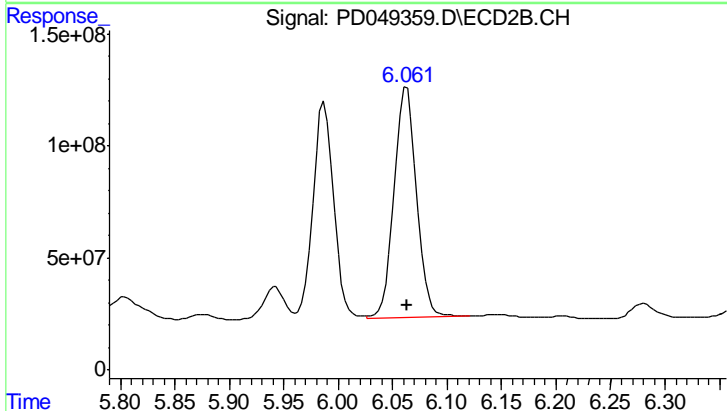


#25 Chlordane-3  
 R.T.: 5.987 min  
 Delta R.T.: 0.000 min  
 Response: 1276356766  
 Conc: 980.83 ng/ml

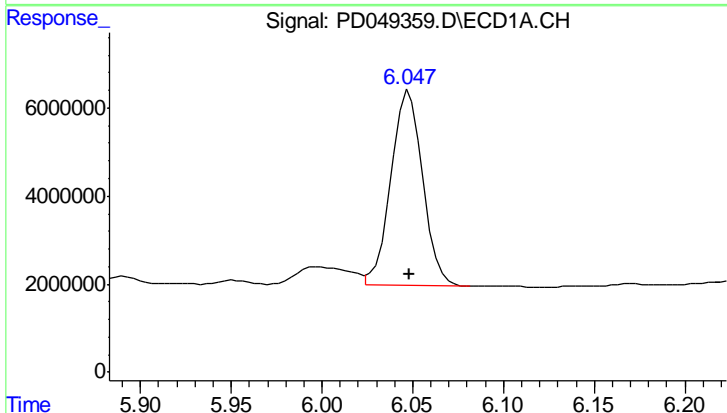


#26 Chlordane-4  
 R.T.: 5.228 min  
 Delta R.T.: 0.000 min  
 Response: 155125245  
 Conc: 1007.42 ng/ml

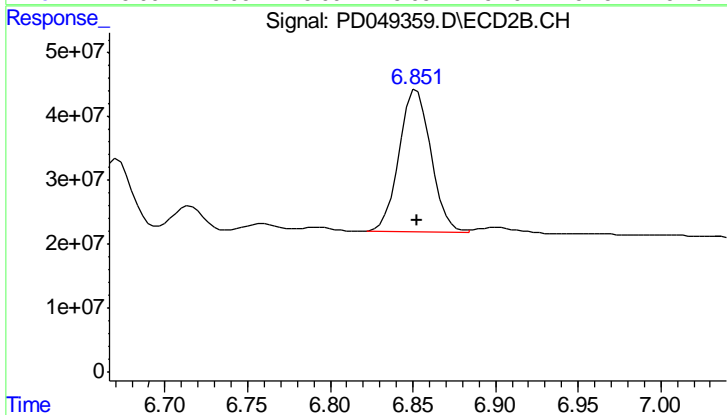
Instrument :  
 ECD\_D  
 ClientSampleId :  
 PCHLORICC1000



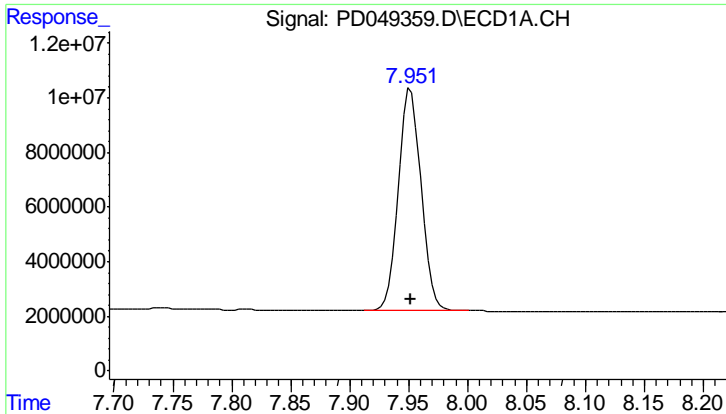
#26 Chlordane-4  
 R.T.: 6.063 min  
 Delta R.T.: 0.000 min  
 Response: 1476069108  
 Conc: 976.73 ng/ml



#27 Chlordane-5  
 R.T.: 6.048 min  
 Delta R.T.: 0.000 min  
 Response: 54035252  
 Conc: 993.77 ng/ml



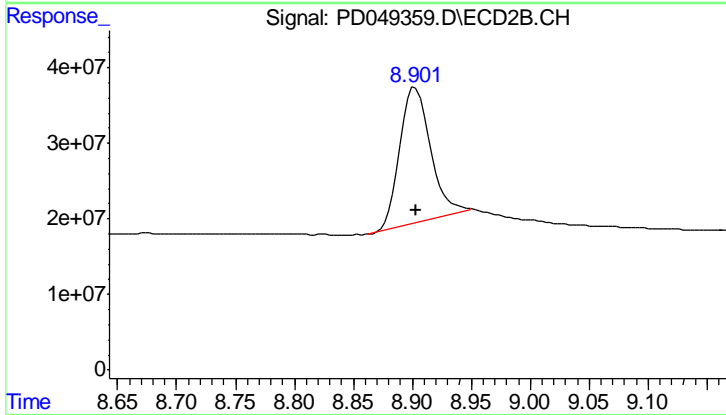
#27 Chlordane-5  
 R.T.: 6.852 min  
 Delta R.T.: 0.000 min  
 Response: 299089985  
 Conc: 985.35 ng/ml



#28 Decachlorobiphenyl

R.T.: 7.952 min  
 Delta R.T.: 0.000 min  
 Response: 107772922  
 Conc: 98.56 ng/ml

**Instrument :**  
 ECD\_D  
**ClientSampleId :**  
 PCHLORICC1000



#28 Decachlorobiphenyl

R.T.: 8.903 min  
 Delta R.T.: 0.000 min  
 Response: 325917019  
 Conc: 98.38 ng/ml