

Data Path : Z:\pestpcbsrv\HPCHEM1\ECD_D\Data\PD092318\
 Data File : PD049371.D
 Signal(s) : Signal #1: ECD1A.CH Signal #2: ECD2B.CH
 Acq On : 22 Sep 2018 5:03
 Operator : AJ\SJ
 Sample : PTOXICV500
 Misc :
 ALS Vial : 40 Sample Multiplier: 1

Instrument :
 ECD_D
 ClientSampleId :
 ICVPD092318TOX

Integration File signal 1: autoint1.e
 Integration File signal 2: autoint2.e
 Quant Time: Sep 22 06:38:33 2018
 Quant Method : Z:\pestpcbsrv\HPCHEM1\ECD_D\Method\DTX092318.M
 Quant Title : GC Extractables
 QLast Update : Sat Sep 22 06:38:08 2018
 Response via : Initial Calibration
 Integrator: ChemStation 6890 Scale Mode: Large solvent peaks clipped

Volume Inj. : 1 µl
 Signal #1 Phase : ZB-MR2 Signal #2 Phase: ZB-MR1
 Signal #1 Info : 30M x 0.32mm x0.2 Signal #2 Info : 30M x 0.32mm x 0.50µm

Compound	RT#1	RT#2	Resp#1	Resp#2	ng/ml	ng/ml

System Monitoring Compounds						
1) SA Tetrachlo...	3.295	3.913	49746440	438.3E6	47.338	46.806
7) SA Decachlor...	7.952	8.903	53977032	156.7E6	47.457	46.342
Target Compounds						
2) Toxaphene-1	5.483	6.195	4567844	12744789	458.659	464.836
3) Toxaphene-2	6.075	6.548	12314928	37890524	460.272	463.032
4) Toxaphene-3	6.667	7.028	10512544	111.1E6	468.484	472.273
5) Toxaphene-4	6.734	7.111	5768353	64773955	479.798	469.363
6) Toxaphene-5	6.796	7.251	15668921	24363247	458.973	448.371

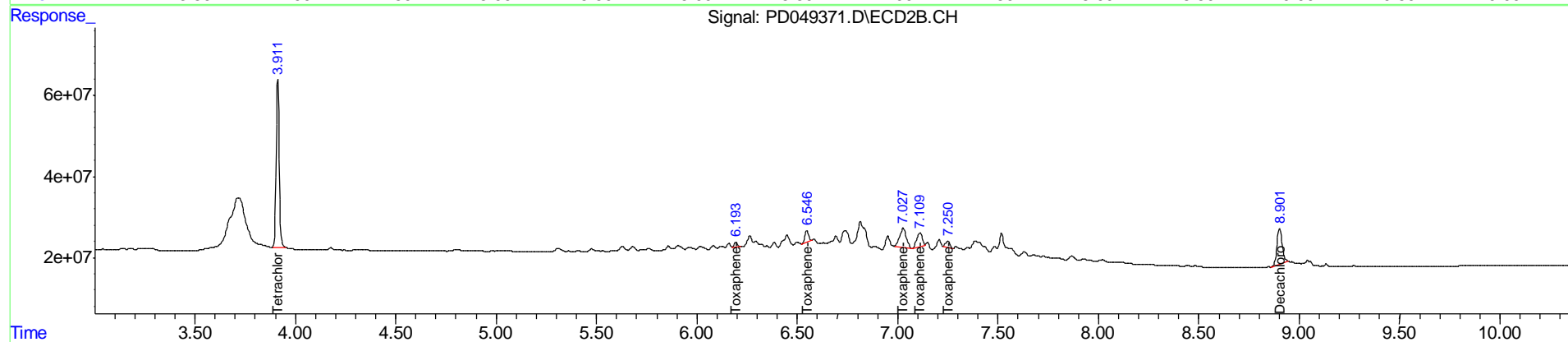
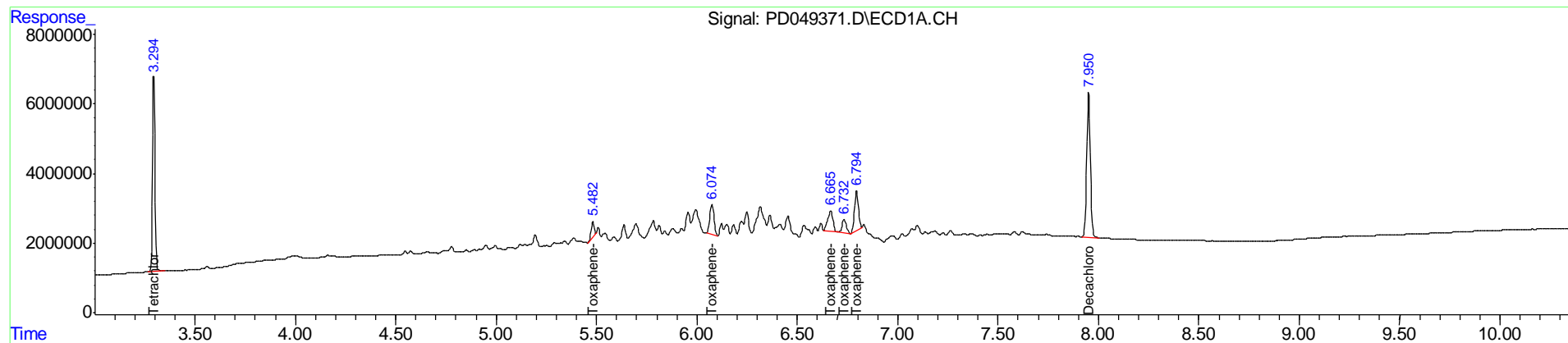
(f)=RT Delta > 1/2 Window (#)=Amounts differ by > 25% (m)=manual int.

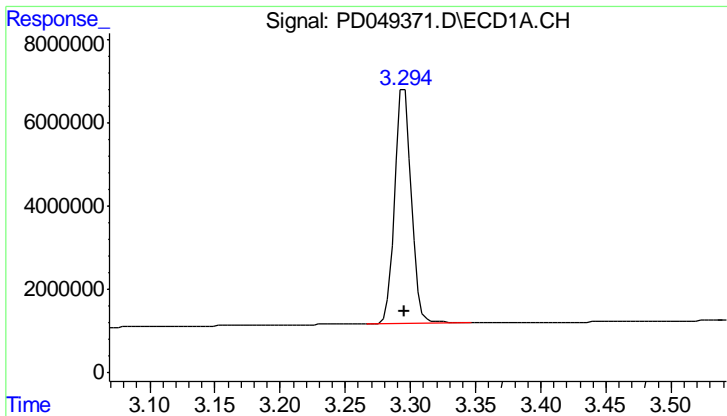
Data Path : Z:\pestpcbsrv\HPCHEM1\ECD_D\Data\PD092318\
 Data File : PD049371.D
 Signal(s) : Signal #1: ECD1A.CH Signal #2: ECD2B.CH
 Acq On : 22 Sep 2018 5:03
 Operator : AJ\SJ
 Sample : PTOXICV500
 Misc :
 ALS Vial : 40 Sample Multiplier: 1

Instrument :
 ECD_D
 Client Sampled :
 ICVPD092318TOX

Integration File signal 1: autoint1.e
 Integration File signal 2: autoint2.e
 Quant Time: Sep 22 06:38:33 2018
 Quant Method : Z:\pestpcbsrv\HPCHEM1\ECD_D\Method\DTX092318.M
 Quant Title : GC Extractables
 QLast Update : Sat Sep 22 06:38:08 2018
 Response via : Initial Calibration
 Integrator: ChemStation 6890 Scale Mode: Large solvent peaks clipped

Volume Inj. : 1 µl
 Signal #1 Phase : ZB-MR2 Signal #2 Phase: ZB-MR1
 Signal #1 Info : 30M x 0.32mm x 0.2 Signal #2 Info : 30M x 0.32mm x 0.50µm

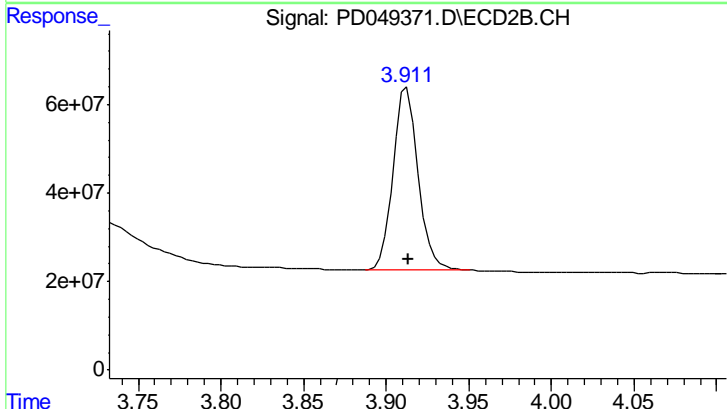




#1 Tetrachloro-m-xylene

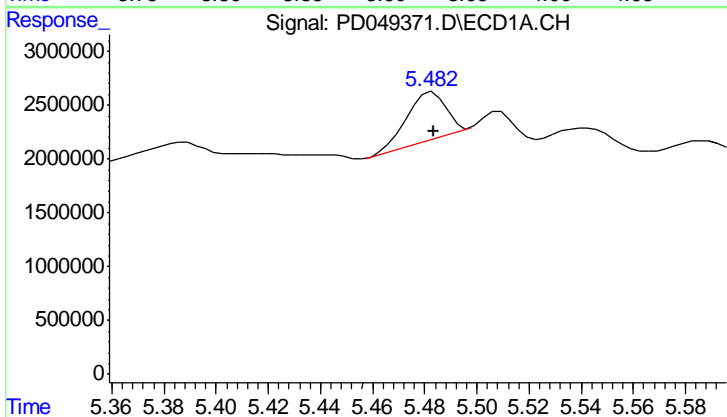
R.T.: 3.295 min
 Delta R.T.: 0.000 min
 Response: 49746440
 Conc: 47.34 ng/ml

Instrument :
 ECD_D
 ClientSampleId :
 ICVPD092318TOX



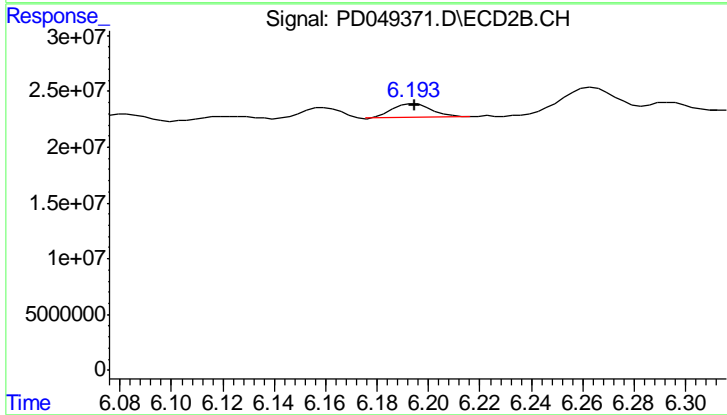
#1 Tetrachloro-m-xylene

R.T.: 3.913 min
 Delta R.T.: 0.000 min
 Response: 438256366
 Conc: 46.81 ng/ml



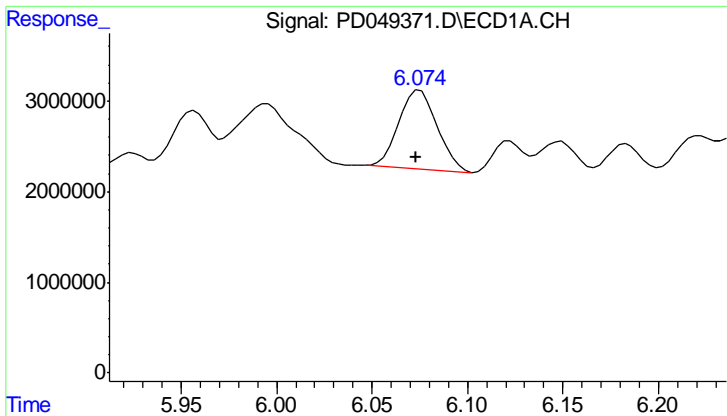
#2 Toxaphene-1

R.T.: 5.483 min
 Delta R.T.: 0.000 min
 Response: 4567844
 Conc: 458.66 ng/ml



#2 Toxaphene-1

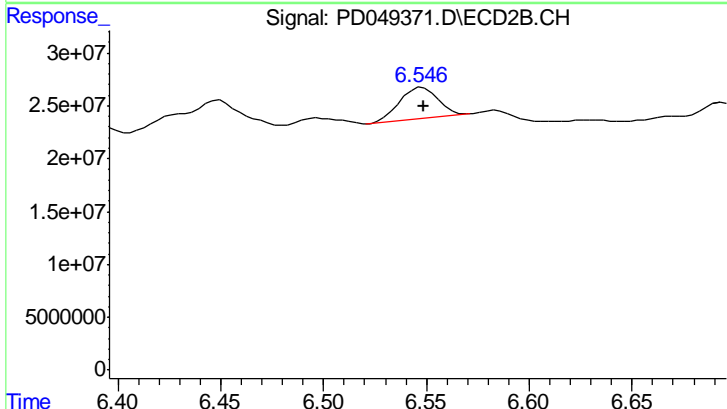
R.T.: 6.195 min
 Delta R.T.: 0.000 min
 Response: 12744789
 Conc: 464.84 ng/ml



#3 Toxaphene-2

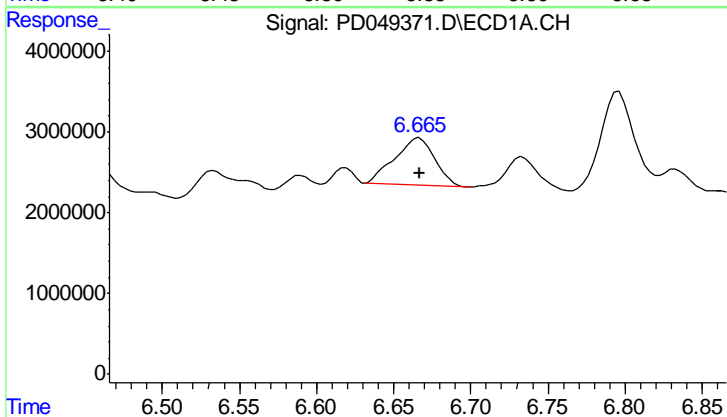
R.T.: 6.075 min
 Delta R.T.: 0.002 min
 Response: 12314928
 Conc: 460.27 ng/ml

Instrument :
 ECD_D
 ClientSampleId :
 ICVPD092318TOX



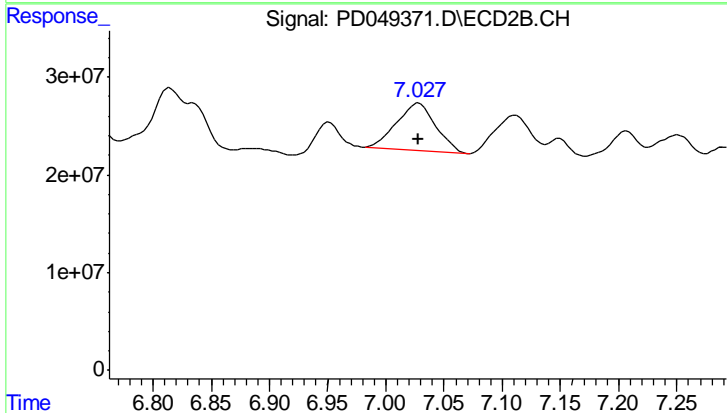
#3 Toxaphene-2

R.T.: 6.548 min
 Delta R.T.: 0.000 min
 Response: 37890524
 Conc: 463.03 ng/ml



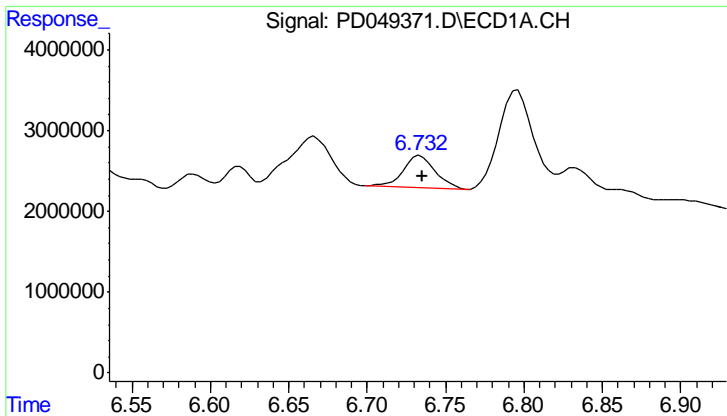
#4 Toxaphene-3

R.T.: 6.667 min
 Delta R.T.: 0.000 min
 Response: 10512544
 Conc: 468.48 ng/ml



#4 Toxaphene-3

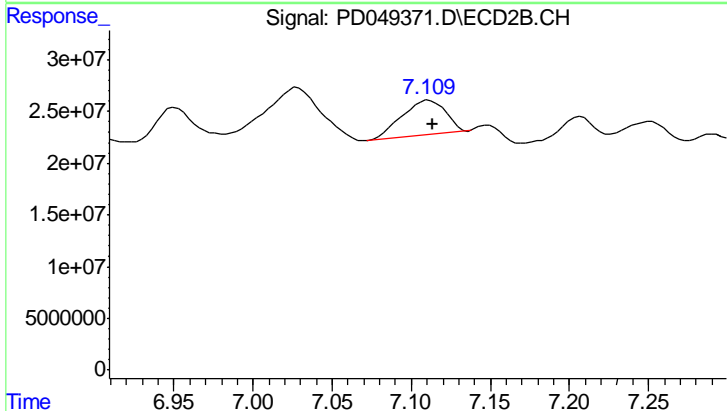
R.T.: 7.028 min
 Delta R.T.: 0.000 min
 Response: 111114842
 Conc: 472.27 ng/ml



#5 Toxaphene-4

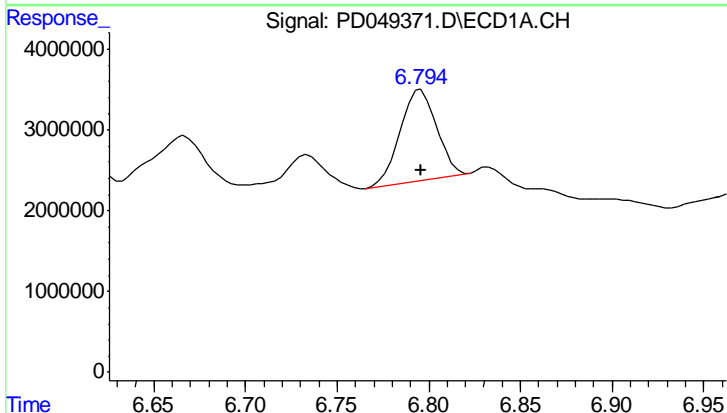
R.T.: 6.734 min
 Delta R.T.: -0.001 min
 Response: 5768353
 Conc: 479.80 ng/ml

Instrument :
 ECD_D
 ClientSampleId :
 ICVPD092318TOX



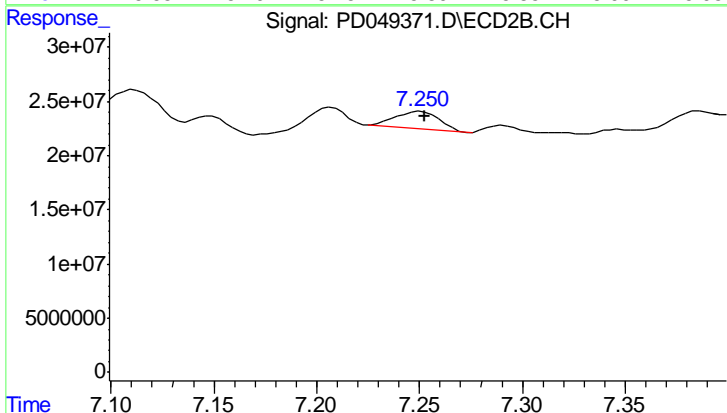
#5 Toxaphene-4

R.T.: 7.111 min
 Delta R.T.: -0.002 min
 Response: 64773955
 Conc: 469.36 ng/ml



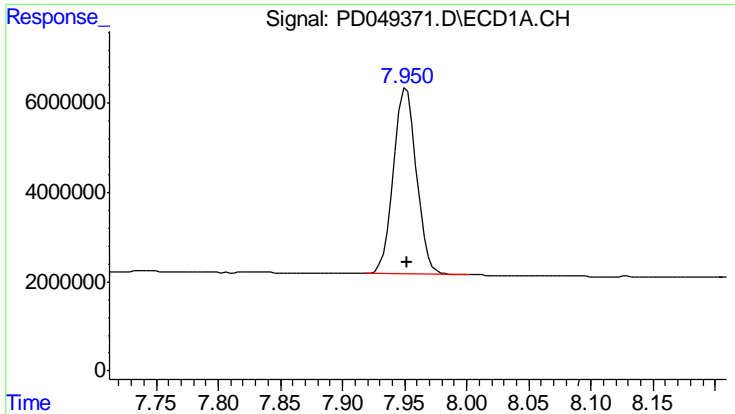
#6 Toxaphene-5

R.T.: 6.796 min
 Delta R.T.: 0.000 min
 Response: 15668921
 Conc: 458.97 ng/ml



#6 Toxaphene-5

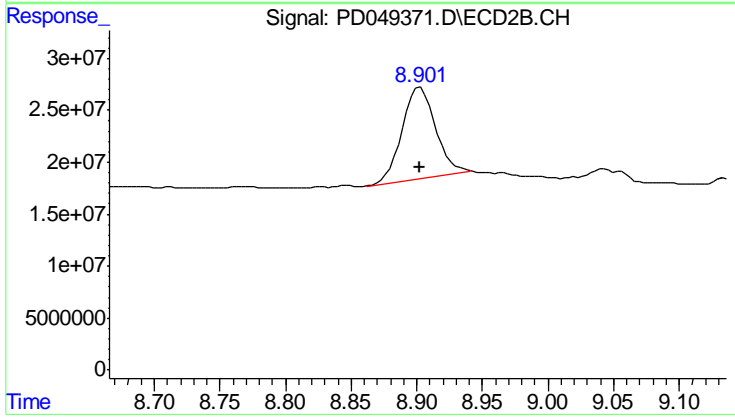
R.T.: 7.251 min
 Delta R.T.: -0.001 min
 Response: 24363247
 Conc: 448.37 ng/ml



#7 Decachlorobiphenyl

R.T.: 7.952 min
Delta R.T.: 0.000 min
Response: 53977032
Conc: 47.46 ng/ml

Instrument :
ECD_D
ClientSampleId :
ICVPD092318TOX



#7 Decachlorobiphenyl

R.T.: 8.903 min
Delta R.T.: 0.000 min
Response: 156732186
Conc: 46.34 ng/ml