

Data Path : Z:\pestpcbsrv\HPCHEM1\ECD_D\Data\PD092320\
 Data File : PD059303.D
 Signal(s) : Signal #1: ECD1A.ch Signal #2: ECD2B.ch
 Acq On : 23 Sep 2020 15:55
 Operator : DD\AJ
 Sample : PB131780BL
 Misc :
 ALS Vial : 7 Sample Multiplier: 1

Instrument :
 ECD_D
 ClientSampleId :

Integration File signal 1: autoint1.e
 Integration File signal 2: autoint2.e
 Quant Time: Sep 24 01:20:14 2020
 Quant Method : Z:\pestpcbsrv\HPCHEM1\ECD_D\Method\PD092320CLP.M
 Quant Title : GC Extractables
 QLast Update : Wed Sep 23 13:19:45 2020
 Response via : Initial Calibration
 Integrator: ChemStation

Volume Inj. : 1 µl
 Signal #1 Phase : ZB-MR2 Signal #2 Phase: ZB-MR1
 Signal #1 Info : 30M x 0.32mm x0.2 Signal #2 Info : 30M x 0.32mm x 0.50µm

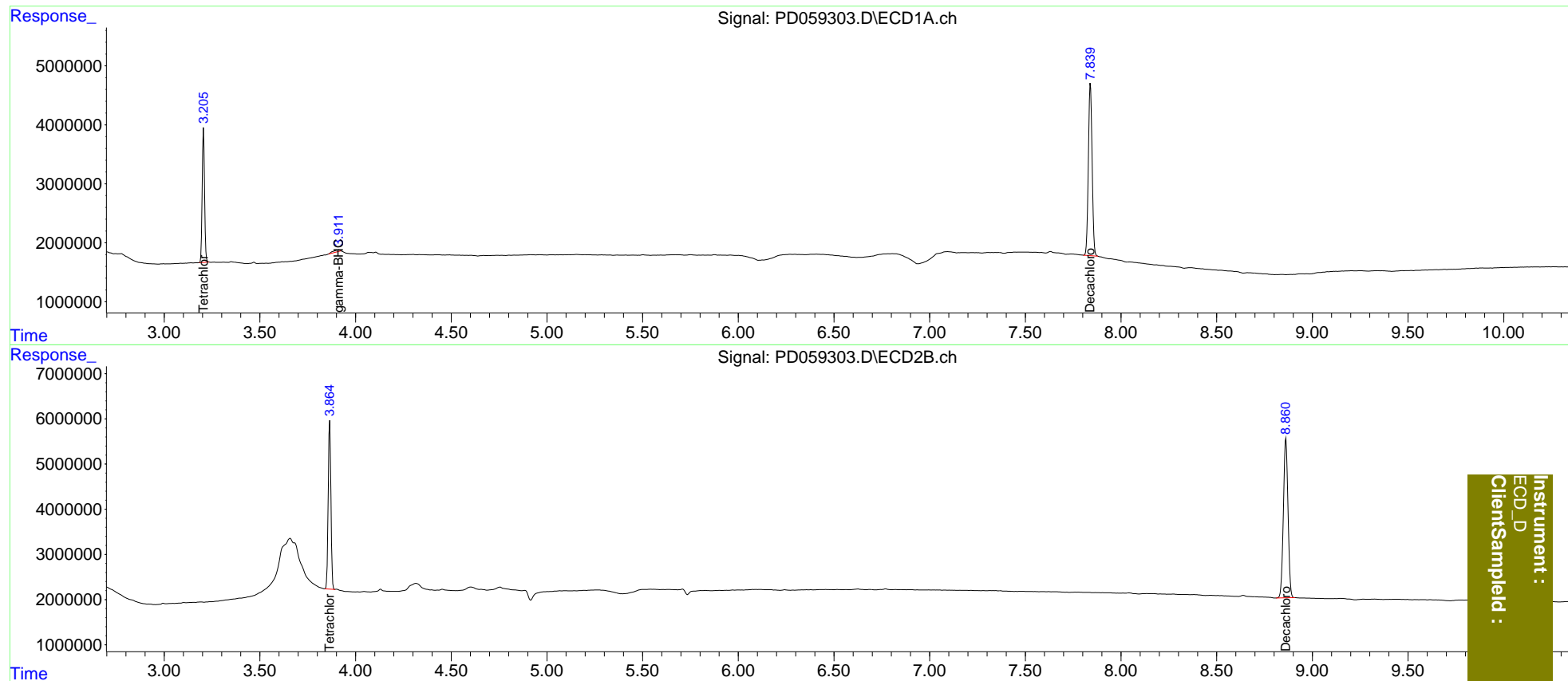
| Compound | RT#1 | RT#2 | Resp#1 | Resp#2 | ng/ml | ng/ml |
|-----------------------------|-------|--------|----------|----------|--------|--------|
| ----- | | | | | | |
| System Monitoring Compounds | | | | | | |
| 1) SA Tetrachlo... | 3.206 | 3.865 | 19630162 | 36613367 | 20.358 | 20.476 |
| 27) SA Decachlor... | 7.840 | 8.862 | 39709071 | 59057375 | 38.907 | 40.058 |
| Target Compounds | | | | | | |
| 3) MA gamma-BHC... | 3.912 | 0.000 | 872071 | 0 | 0.623 | N.D. # |
| 10) B trans-Chl... | 0.000 | 5.903f | 0 | 135678 | N.D. | <MDL |
| ----- | | | | | | |

(f)=RT Delta > 1/2 Window (#)=Amounts differ by > 25% (m)=manual int.

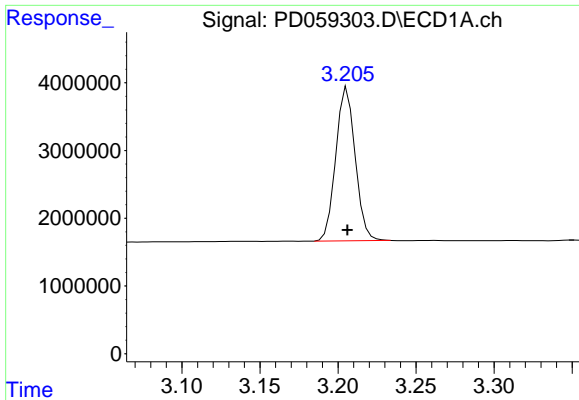
Data Path : Z:\pestpcbsrv\HPCHEM1\ECD_D\Data\PD092320\
 Data File : PD059303.D
 Signal(s) : Signal #1: ECD1A.ch Signal #2: ECD2B.ch
 Acq On : 23 Sep 2020 15:55
 Operator : DD\AJ
 Sample : PB131780BL
 Misc :
 ALS Vial : 7 Sample Multiplier: 1

Integration File signal 1: autoint1.e
 Integration File signal 2: autoint2.e
 Quant Time: Sep 24 01:20:14 2020
 Quant Method : Z:\pestpcbsrv\HPCHEM1\ECD_D\Method\PD092320CLP.M
 Quant Title : GC Extractables
 QLast Update : Wed Sep 23 13:19:45 2020
 Response via : Initial Calibration
 Integrator: ChemStation

Volume Inj. : 1 µl
 Signal #1 Phase : ZB-MR2 Signal #2 Phase: ZB-MR1
 Signal #1 Info : 30M x 0.32mm x0.2 Signal #2 Info : 30M x 0.32mm x 0.50µm

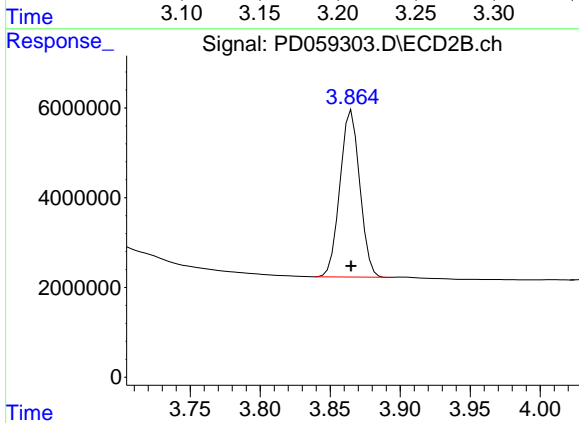


Instrument :
 ECD_D
 ClientSampleId :

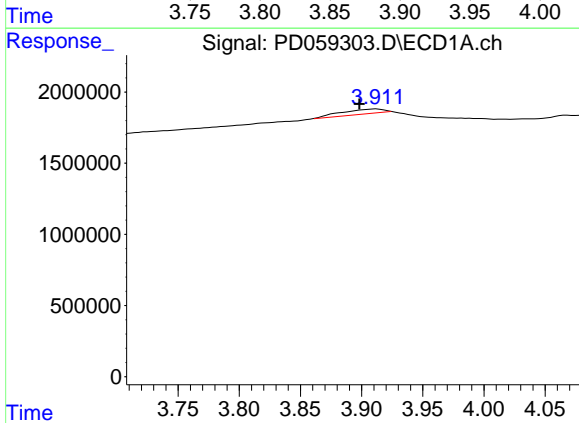


#1 Tetrachloro-m-xylene
 R.T.: 3.206 min
 Delta R.T.: 0.000 min
 Response: 19630162
 Conc: 20.36 ng/ml

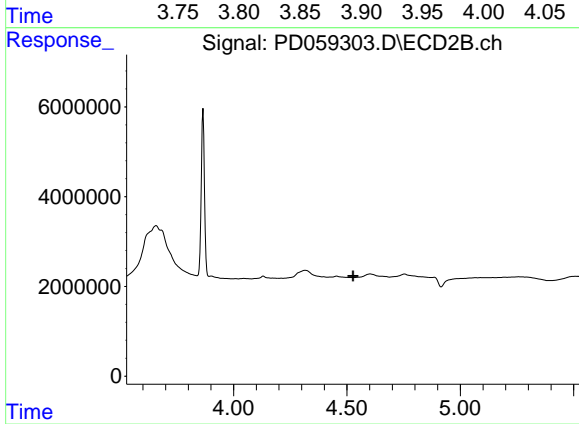
Instrument :
 ECD_D
 ClientSampleId :



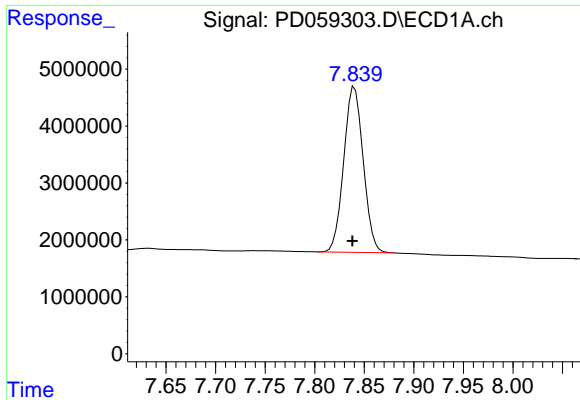
#1 Tetrachloro-m-xylene
 R.T.: 3.865 min
 Delta R.T.: 0.000 min
 Response: 36613367
 Conc: 20.48 ng/ml



#3 gamma-BHC (Lindane)
 R.T.: 3.912 min
 Delta R.T.: 0.014 min
 Response: 872071
 Conc: 0.62 ng/ml



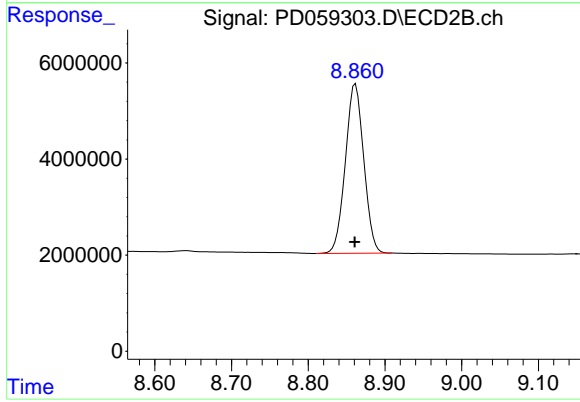
#3 gamma-BHC (Lindane)
 R.T.: 0.000 min
 Exp R.T. : 4.528 min
 Response: 0
 Conc: N.D.



#27 Decachlorobiphenyl

R.T.: 7.840 min
Delta R.T.: 0.002 min
Response: 39709071
Conc: 38.91 ng/ml

Instrument :
ECD_D
ClientSampleId :



#27 Decachlorobiphenyl

R.T.: 8.862 min
Delta R.T.: 0.000 min
Response: 59057375
Conc: 40.06 ng/ml