

Data Path : Z:\pestpcbsrv\HPCHEM1\ECD_D\Data\PD092320\
 Data File : PD059281.D
 Signal(s) : Signal #1: ECD1A.ch Signal #2: ECD2B.ch
 Acq On : 23 Sep 2020 10:05
 Operator : DD\AJ
 Sample : TOXAPH401
 Misc :
 ALS Vial : 7 Sample Multiplier: 1

Instrument :
 ECD_D
ClientSampleId :
 TOXAPH401

Manual Integrations
APPROVED
 Ankita
 9/24/2020 3:32:23 PM

Integration File signal 1: autoint1.e
 Integration File signal 2: autoint2.e
 Quant Time: Sep 23 10:52:29 2020
 Quant Method : Z:\pestpcbsrv\HPCHEM1\ECD_D\Method\PD092320CLP.M
 Quant Title : GC Extractables
 QLast Update : Wed Sep 23 10:51:16 2020
 Response via : Initial Calibration
 Integrator: ChemStation

Volume Inj. : 1 µl
 Signal #1 Phase : ZB-MR2 Signal #2 Phase: ZB-MR1
 Signal #1 Info : 30M x 0.32mm x0.2 Signal #2 Info : 30M x 0.32mm x 0.50µm

Compound	RT#1	RT#2	Resp#1	Resp#2	ng/ml	ng/ml

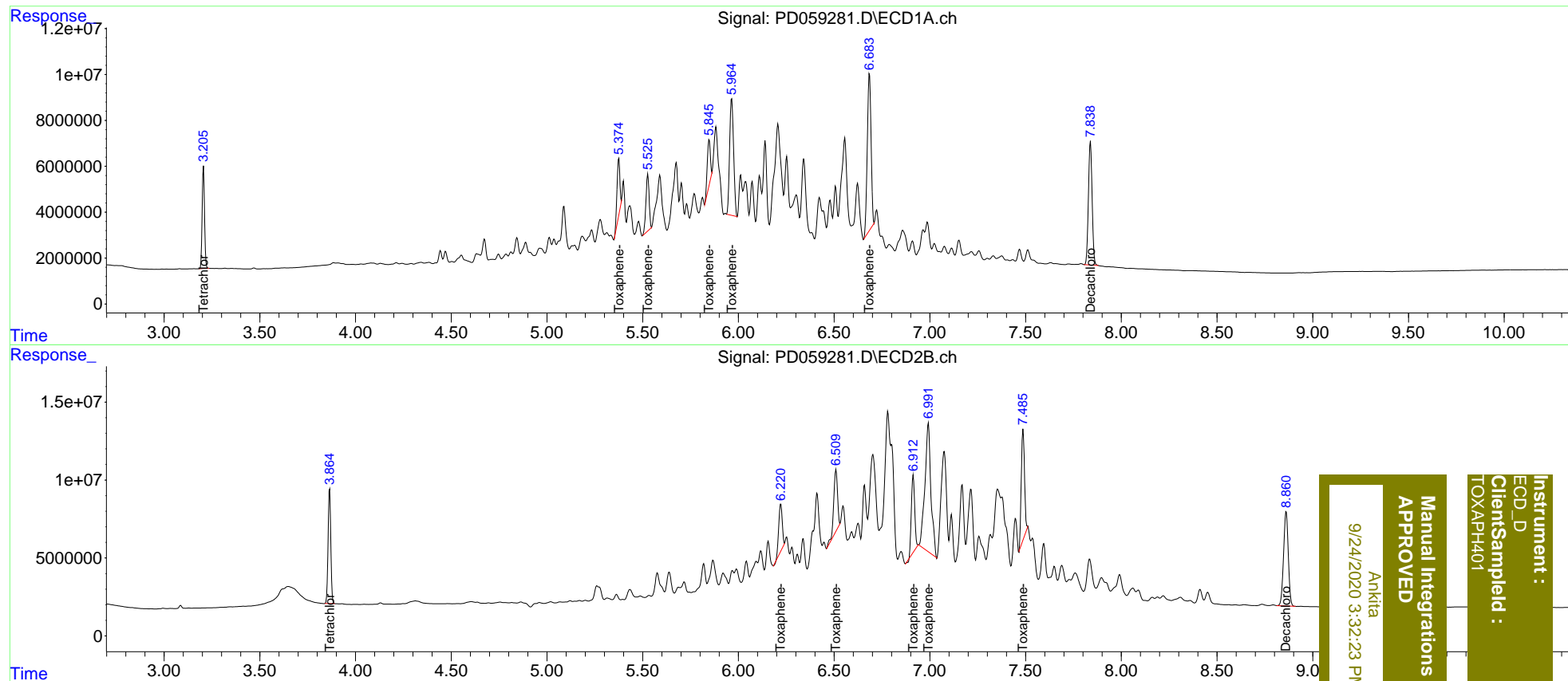
System Monitoring Compounds						
1) SA Tetrachlo...	3.206	3.865	38424699	72382998	38.839	39.185
27) SA Decachlor...	7.839	8.861	72323578	103.3E6	77.659	75.644
Target Compounds						
22) Toxaphene-1	5.375	6.222	25440586	37798053	4142.464	3976.247
23) Toxaphene-2	5.527	6.510	28498088	53871596	4026.480	4202.741
24) Toxaphene-3	5.848	6.913	21483607	58835746	3862.073	3763.816
25) Toxaphene-4	5.965	6.992	73705559	180.4E6	4001.194	3998.448
26) Toxaphene-5	6.685	7.485	93772399	83786779	4132.726	4048.726m

(f)=RT Delta > 1/2 Window (#)=Amounts differ by > 25% (m)=manual int.

Data Path : Z:\pestpcbsrv\HPCHEM1\ECD_D\Data\PD092320\
 Data File : PD059281.D
 Signal(s) : Signal #1: ECD1A.ch Signal #2: ECD2B.ch
 Acq On : 23 Sep 2020 10:05
 Operator : DD\AJ
 Sample : TOXAPH401
 Misc :
 ALS Vial : 7 Sample Multiplier: 1

Integration File signal 1: autoint1.e
 Integration File signal 2: autoint2.e
 Quant Time: Sep 23 10:52:29 2020
 Quant Method : Z:\pestpcbsrv\HPCHEM1\ECD_D\Method\PD092320CLP.M
 Quant Title : GC Extractables
 QLast Update : Wed Sep 23 10:51:16 2020
 Response via : Initial Calibration
 Integrator: ChemStation

Volume Inj. : 1 µl
 Signal #1 Phase : ZB-MR2 Signal #2 Phase: ZB-MR1
 Signal #1 Info : 30M x 0.32mm x0.2 Signal #2 Info : 30M x 0.32mm x 0.50µm



Instrument : ECD_D
 ClientSampleId : TOXAPH401
 Manual Integrations APPROVED
 Ankitia
 9/24/2020 3:32:23 PM