

Data Path : Z:\pestpcbsrv\HPCHEM1\ECD_D\Data\PD092320\
 Data File : PD059285.D
 Signal(s) : Signal #1: ECD1A.ch Signal #2: ECD2B.ch
 Acq On : 23 Sep 2020 11:01
 Operator : DD\AJ
 Sample : INDA201
 Misc :
 ALS Vial : 11 Sample Multiplier: 1

Instrument :
 ECD_D
 ClientSampleId :
 INDA201

Integration File signal 1: autoint1.e
 Integration File signal 2: autoint2.e
 Quant Time: Sep 23 11:57:10 2020
 Quant Method : Z:\pestpcbsrv\HPCHEM1\ECD_D\Method\PD092320CLP.M
 Quant Title : GC Extractables
 QLast Update : Wed Sep 23 11:55:30 2020
 Response via : Initial Calibration
 Integrator: ChemStation

Volume Inj. : 1 µl
 Signal #1 Phase : ZB-MR1 Signal #2 Phase: ZB-MR1
 Signal #1 Info : 30M x 0.32mm x0.2 Signal #2 Info : 30M x 0.32mm x 0.50µm

	Compound	RT#1	RT#2	Resp#1	Resp#2	ng/ml	ng/ml

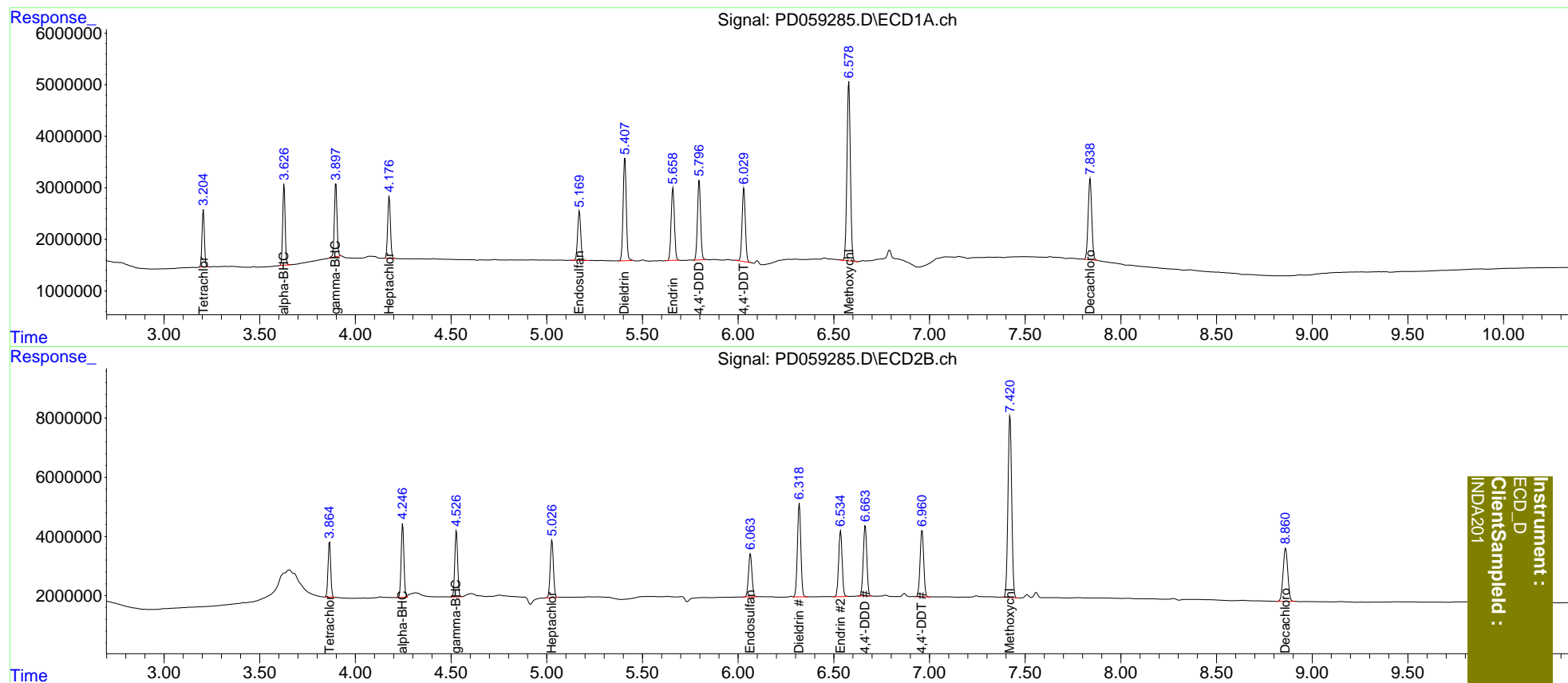
System Monitoring Compounds							
1)	SA Tetrachlo...	3.206	3.865	9703878	18286657	10.157	10.263
27)	SA Decachlor...	7.839	8.861	20641917	30458923	19.920	19.795
Target Compounds							
2)	A alpha-BHC	3.627	4.247	13895240	24924695	9.810	9.832
3)	MA gamma-BHC...	3.898	4.528	13856630	23129305	10.194	9.949
4)	MA Heptachlor	4.177	5.028	12086924	22400382	9.854	9.909
9)	A Endosulfan I	5.171	6.064	10867924	18250342	10.022	10.051
13)	MA Dieldrin	5.408	6.320	23090736	39142350	19.216	19.596
14)	MA Endrin	5.660	6.536	16828868	28474089	18.231	18.386
16)	A 4,4'-DDD	5.797	6.665	17545957	30693751	19.407	19.656
17)	MA 4,4'-DDT	6.030	6.962	16734602	29600888	18.123	18.753
20)	A Methoxychlor	6.579	7.421	43241638	83536056	96.296	96.006

(f)=RT Delta > 1/2 Window (#)=Amounts differ by > 25% (m)=manual int.

Data Path : Z:\pestpcbsrv\HPCHEM1\ECD_D\Data\PD092320\
 Data File : PD059285.D
 Signal(s) : Signal #1: ECD1A.ch Signal #2: ECD2B.ch
 Acq On : 23 Sep 2020 11:01
 Operator : DD\AJ
 Sample : INDA201
 Misc :
 ALS Vial : 11 Sample Multiplier: 1

Integration File signal 1: autoint1.e
 Integration File signal 2: autoint2.e
 Quant Time: Sep 23 11:57:10 2020
 Quant Method : Z:\pestpcbsrv\HPCHEM1\ECD_D\Method\PD092320CLP.M
 Quant Title : GC Extractables
 QLast Update : Wed Sep 23 11:55:30 2020
 Response via : Initial Calibration
 Integrator: ChemStation

Volume Inj. : 1 µl
 Signal #1 Phase : ZB-MR2 Signal #2 Phase: ZB-MR1
 Signal #1 Info : 30M x 0.32mm x0.2 Signal #2 Info : 30M x 0.32mm x 0.50µm



Instrument :
 ECD_D
 ClientSampleId :
 INDA201