

Data Path : Z:\pestpcbsrv\HPCHEM1\ECD\_D\Data\PD092320\  
 Data File : PD059290.D  
 Signal(s) : Signal #1: ECD1A.ch Signal #2: ECD2B.ch  
 Acq On : 23 Sep 2020 12:12  
 Operator : DD\AJ  
 Sample : INDB401  
 Misc :  
 ALS Vial : 16 Sample Multiplier: 1

Instrument :  
 ECD\_D  
 ClientSampleId :  
 INDB401

Integration File signal 1: autoint1.e  
 Integration File signal 2: autoint2.e  
 Quant Time: Sep 23 13:00:38 2020  
 Quant Method : Z:\pestpcbsrv\HPCHEM1\ECD\_D\Method\PD092320CLP.M  
 Quant Title : GC Extractables  
 QLast Update : Wed Sep 23 12:59:01 2020  
 Response via : Initial Calibration  
 Integrator: ChemStation

Volume Inj. : 1 µl  
 Signal #1 Phase : ZB-MR2 Signal #2 Phase: ZB-MR1  
 Signal #1 Info : 30M x 0.32mm x0.2 Signal #2 Info : 30M x 0.32mm x 0.50µm

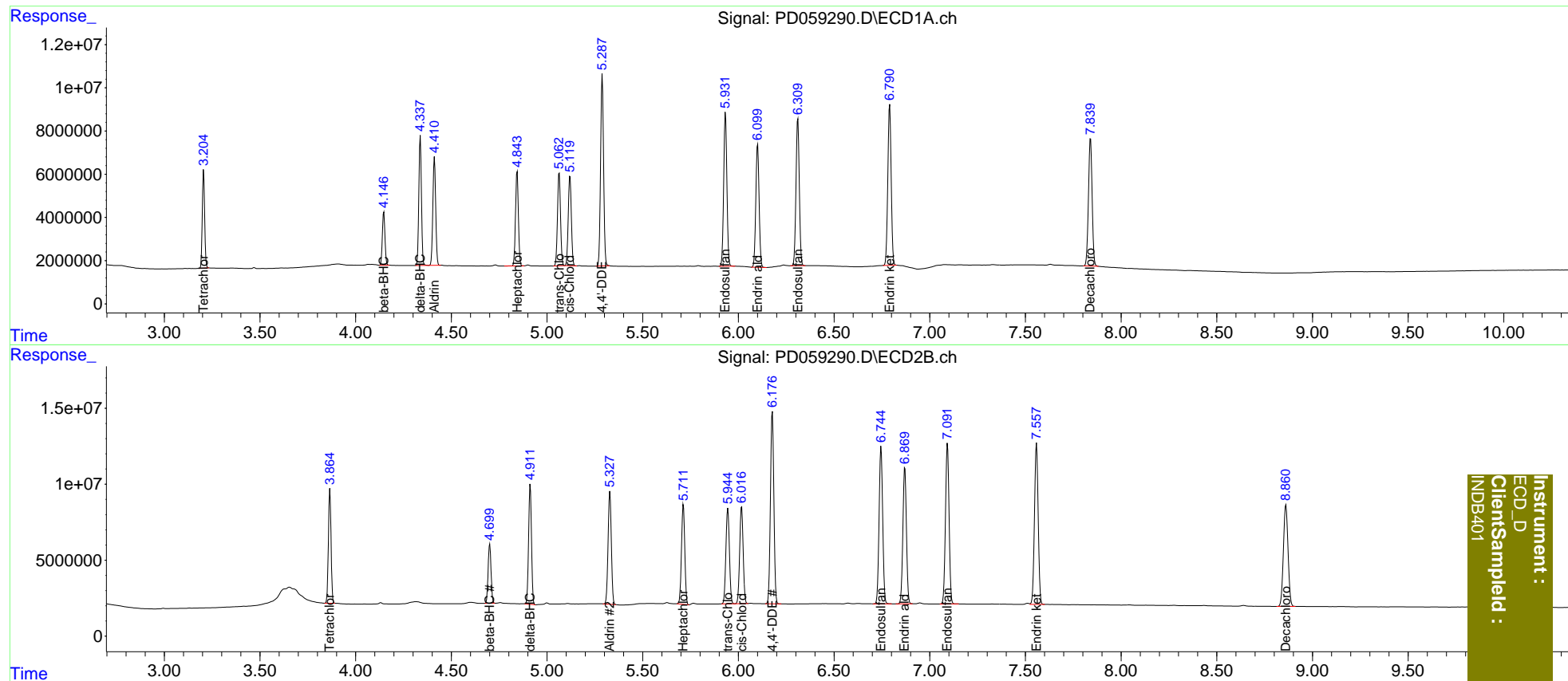
Compound	RT#1	RT#2	Resp#1	Resp#2	ng/ml	ng/ml
-----						
System Monitoring Compounds						
1) SA Tetrachlo...	3.206	3.866	38924857	72524550	40.132	39.562
27) SA Decachlor...	7.840	8.861	78940254	112.7E6	80.150	77.964
Target Compounds						
5) MB Aldrin	4.412	5.329	51283431	87385589	41.156	40.341
6) B beta-BHC	4.147	4.701	23333186	41618555	39.365	38.836
7) B delta-BHC	4.338	4.913	56568488	82407072	41.402	42.280
8) B Heptachlo...	4.844	5.713	46341804	79103029	40.445	39.566
10) B trans-Chl...	5.064	5.945	47091313	80260481	40.701	39.854
11) B cis-Chlor...	5.120	6.017	46831307	80223865	40.260	39.709
12) B 4,4'-DDE	5.289	6.177	95746400	157.0E6	83.753	82.230
15) B Endosulfa...	5.933	6.746	82661912	135.3E6	81.466	80.635
18) B Endrin al...	6.101	6.870	68176182	115.1E6	81.003	79.560
19) B Endosulfa...	6.311	7.093	81859329	137.7E6	81.359	80.384
21) B Endrin ke...	6.791	7.558	91030425	142.7E6	81.975	81.123
-----						

(f)=RT Delta > 1/2 Window (#)=Amounts differ by > 25% (m)=manual int.

Data Path : Z:\pestpcbsrv\HPCHEM1\ECD\_D\Data\PD092320\  
 Data File : PD059290.D  
 Signal(s) : Signal #1: ECD1A.ch Signal #2: ECD2B.ch  
 Acq On : 23 Sep 2020 12:12  
 Operator : DD\AJ  
 Sample : INDB401  
 Misc :  
 ALS Vial : 16 Sample Multiplier: 1

Integration File signal 1: autoint1.e  
 Integration File signal 2: autoint2.e  
 Quant Time: Sep 23 13:00:38 2020  
 Quant Method : Z:\pestpcbsrv\HPCHEM1\ECD\_D\Method\PD092320CLP.M  
 Quant Title : GC Extractables  
 QLast Update : Wed Sep 23 12:59:01 2020  
 Response via : Initial Calibration  
 Integrator: ChemStation

Volume Inj. : 1 µl  
 Signal #1 Phase : ZB-MR2 Signal #2 Phase: ZB-MR1  
 Signal #1 Info : 30M x 0.32mm x0.2 Signal #2 Info : 30M x 0.32mm x 0.50µm



Instrument :  
 ECD\_D  
 ClientSampleId :  
 INDB401