

Data Path : Z:\pestpcbsrv\HPCHEM1\ECD\_D\Data\PD092320\  
 Data File : PD059301.D  
 Signal(s) : Signal #1: ECD1A.ch Signal #2: ECD2B.ch  
 Acq On : 23 Sep 2020 15:27  
 Operator : DD\AJ  
 Sample : L1955-02  
 Misc : PEST MDL 1 PPB  
 ALS Vial : 5 Sample Multiplier: 1

Instrument :  
 ECD\_D  
 ClientSampled :

Integration File signal 1: autoint1.e  
 Integration File signal 2: autoint2.e  
 Quant Time: Sep 24 01:19:30 2020  
 Quant Method : Z:\pestpcbsrv\HPCHEM1\ECD\_D\Method\PD092320CLP.M  
 Quant Title : GC Extractables  
 QLast Update : Wed Sep 23 13:19:45 2020  
 Response via : Initial Calibration  
 Integrator: ChemStation

Volume Inj. : 1 µl  
 Signal #1 Phase : ZB-MR2 Signal #2 Phase: ZB-MR1  
 Signal #1 Info : 30M x 0.32mm x0.2 Signal #2 Info : 30M x 0.32mm x 0.50µm

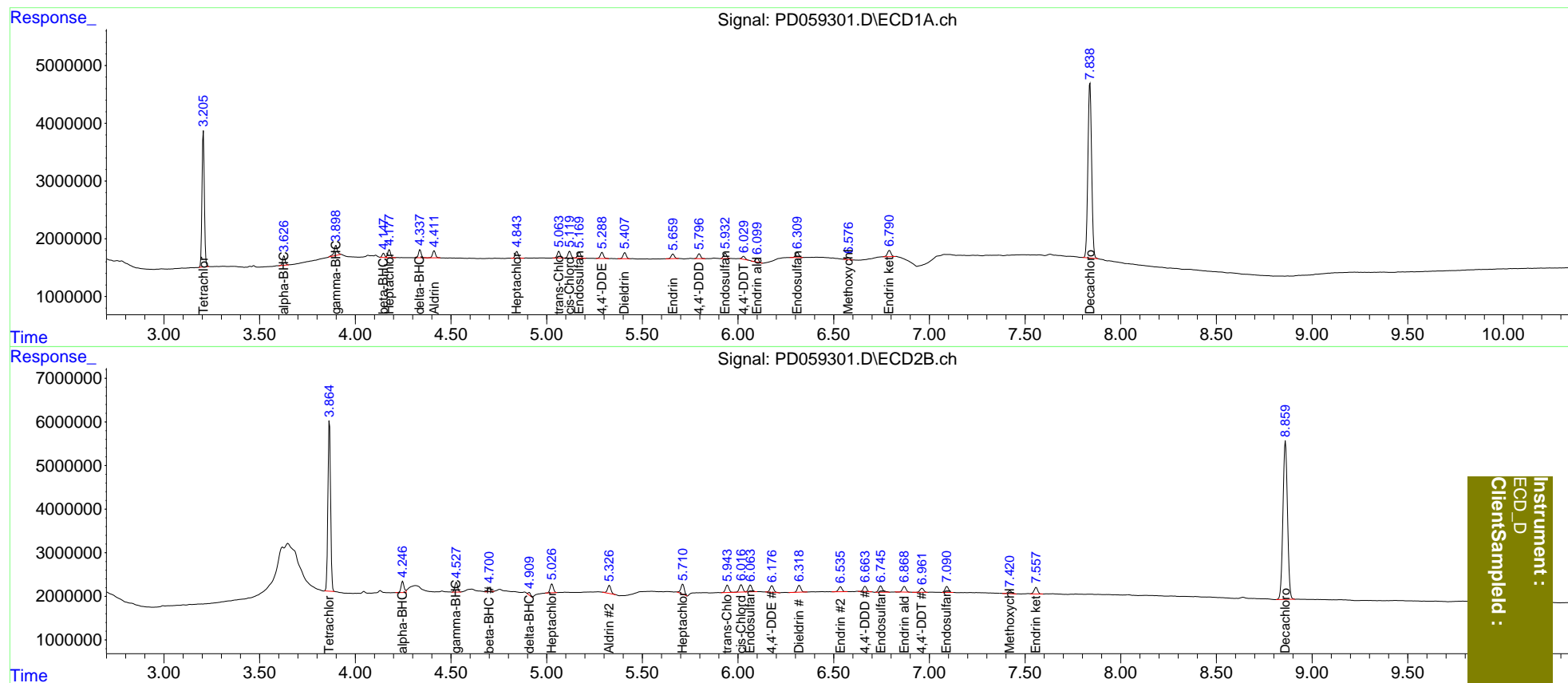
	Compound	RT#1	RT#2	Resp#1	Resp#2	ng/ml	ng/ml
-----							
System Monitoring Compounds							
1)	SA Tetrachlo...	3.206	3.865	20338347	38014944	21.093	21.260
2)	SA Decachlor...	7.839	8.860	40985493	59870261	40.157	40.609
Target Compounds							
2)	A alpha-BHC	3.628	4.248	1464448	2789163	1.021	1.094
3)	MA gamma-BHC...	3.899	4.528	2161691	2333652	1.544	0.998 #
4)	MA Heptachlor	4.178	5.028	1365135	2357486	1.108	1.046
5)	MB Aldrin	4.412	5.328	1346635	2281604	1.078	1.072
6)	B beta-BHC	4.148	4.701	685957	1032351	1.152	0.988
7)	B delta-BHC	4.338	4.909	1382894	507409	1.011	0.278m#
8)	B Heptachlo...	4.845	5.712	1284612	2993105	1.117	1.506 #
9)	A Endosulfan I	5.171	6.065	1157531	1959485	1.061	1.073
10)	B trans-Chl...	5.064	5.945	1258515	2114800	1.083	1.064
11)	B cis-Chlor...	5.120	6.017	1282579	2129303	1.099	1.067
12)	B 4,4'-DDE	5.290	6.177	1252876	2034701	1.091	1.077
13)	MA Dieldrin	5.409	6.320	1215625	2037614	1.018	1.020
14)	MA Endrin	5.660	6.536	949142	1488406	1.070	0.999
15)	B Endosulfa...	5.933	6.745	1107517	2144335	1.088	1.279m
16)	A 4,4'-DDD	5.798	6.665	965018	1433386	1.072	0.917
17)	MA 4,4'-DDT	6.029	6.962	583139	1254173	0.642m	0.808 #
18)	B Endrin al...	6.100	6.870	735808	1664932	0.875	1.152 #
19)	B Endosulfa...	6.311	7.092	1103213	1797147	1.086	1.045
20)	A Methoxychlor	6.576	7.421	424781	895287	0.984m	1.088
21)	B Endrin ke...	6.791	7.558	1414211	2005720	1.273	1.160

(f)=RT Delta > 1/2 Window (#)=Amounts differ by > 25% (m)=manual int.

Data Path : Z:\pestpcbsrv\HPCHEM1\ECD\_D\Data\PD092320\  
 Data File : PD059301.D  
 Signal(s) : Signal #1: ECD1A.ch Signal #2: ECD2B.ch  
 Acq On : 23 Sep 2020 15:27  
 Operator : DD\AJ  
 Sample : L1955-02  
 Misc : PEST MDL 1 PPB  
 ALS Vial : 5 Sample Multiplier: 1

Integration File signal 1: autoint1.e  
 Integration File signal 2: autoint2.e  
 Quant Time: Sep 24 01:19:30 2020  
 Quant Method : Z:\pestpcbsrv\HPCHEM1\ECD\_D\Method\PD092320CLP.M  
 Quant Title : GC Extractables  
 QLast Update : Wed Sep 23 13:19:45 2020  
 Response via : Initial Calibration  
 Integrator: ChemStation

Volume Inj. : 1 µl  
 Signal #1 Phase : ZB-MR2 Signal #2 Phase: ZB-MR1  
 Signal #1 Info : 30M x 0.32mm x0.2 Signal #2 Info : 30M x 0.32mm x 0.50µm



Instrument :  
 ECD\_D  
 ClientSampleId :