

Data Path : Z:\pestpcbsrv\HPCHEM1\ECD\_D\Data\PD092320\  
 Data File : PD059315.D  
 Signal(s) : Signal #1: ECD1A.ch Signal #2: ECD2B.ch  
 Acq On : 23 Sep 2020 18:45  
 Operator : DD\AJ  
 Sample : MDL-TOX-01  
 Misc : TOX MDL 100 PPB  
 ALS Vial : 16 Sample Multiplier: 1

Instrument :  
 ECD\_D  
 ClientSampleId :

Integration File signal 1: autoint1.e  
 Integration File signal 2: autoint2.e  
 Quant Time: Sep 24 01:49:02 2020  
 Quant Method : Z:\pestpcbsrv\HPCHEM1\ECD\_D\Method\PD092320CLP.M  
 Quant Title : GC Extractables  
 QLast Update : Wed Sep 23 13:19:45 2020  
 Response via : Initial Calibration  
 Integrator: ChemStation

Volume Inj. : 1 µl  
 Signal #1 Phase : ZB-MR2 Signal #2 Phase: ZB-MR1  
 Signal #1 Info : 30M x 0.32mm x0.2 Signal #2 Info : 30M x 0.32mm x 0.50µm

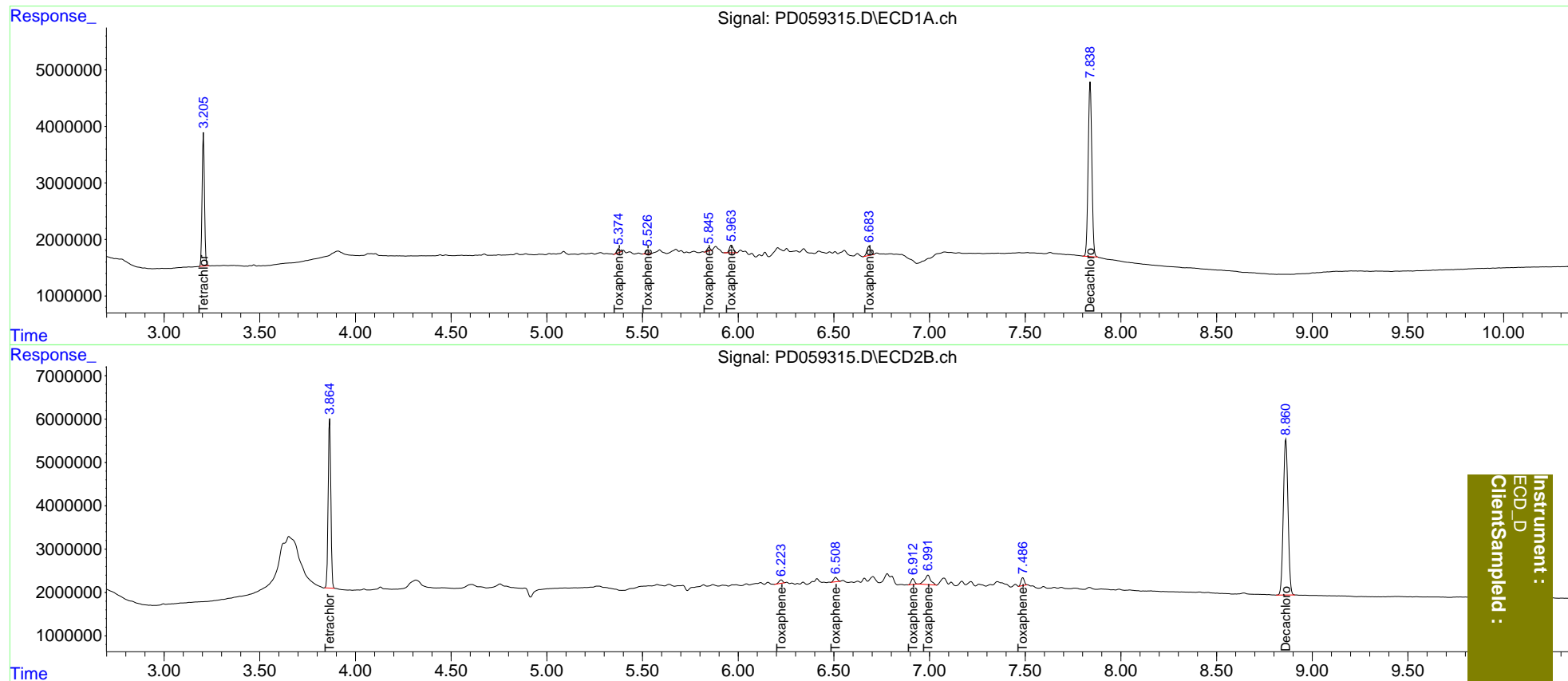
Compound	RT#1	RT#2	Resp#1	Resp#2	ng/ml	ng/ml
-----						
System Monitoring Compounds						
1) SA Tetrachlo...	3.206	3.865	20312296	38046468	21.066	21.277
27) SA Decachlor...	7.839	8.862	41125072	61292980	40.294	41.574
Target Compounds						
22) Toxaphene-1	5.375	6.225	704516	1007706	113.584	105.901
23) Toxaphene-2	5.527	6.510	752952	1287469	106.612	98.703
24) Toxaphene-3	5.848	6.913	636764	1647053	116.933	109.539
25) Toxaphene-4	5.964	6.992	1872583	4775665	103.995	105.632
26) Toxaphene-5	6.685	7.488	2197515	2217420	97.049	102.185
-----						

(f)=RT Delta > 1/2 Window (#)=Amounts differ by > 25% (m)=manual int.

Data Path : Z:\pestpcbsrv\HPCHEM1\ECD\_D\Data\PD092320\  
 Data File : PD059315.D  
 Signal(s) : Signal #1: ECD1A.ch Signal #2: ECD2B.ch  
 Acq On : 23 Sep 2020 18:45  
 Operator : DD\AJ  
 Sample : MDL-TOX-01  
 Misc : TOX MDL 100 PPB  
 ALS Vial : 16 Sample Multiplier: 1

Integration File signal 1: autoint1.e  
 Integration File signal 2: autoint2.e  
 Quant Time: Sep 24 01:49:02 2020  
 Quant Method : Z:\pestpcbsrv\HPCHEM1\ECD\_D\Method\PD092320CLP.M  
 Quant Title : GC Extractables  
 QLast Update : Wed Sep 23 13:19:45 2020  
 Response via : Initial Calibration  
 Integrator: ChemStation

Volume Inj. : 1 µl  
 Signal #1 Phase : ZB-MR2 Signal #2 Phase: ZB-MR1  
 Signal #1 Info : 30M x 0.32mm x0.2 Signal #2 Info : 30M x 0.32mm x 0.50µm



Instrument :  
 ECD\_D  
 ClientSampleId :