

Data Path : Z:\pestpcbsrv\HPCHEM1\ECD_D\Data\PD092321\
 Data File : PD065816.D
 Signal(s) : Signal #1: ECD1A.ch Signal #2: ECD2B.ch
 Acq On : 23 Sep 2021 14:17
 Operator : AR\AJ
 Sample : M3702-11
 Misc :
 ALS Vial : 10 Sample Multiplier: 1

Instrument :
 ECD_D
 ClientSampleId :
 PT-CHLR-WP

Integration File signal 1: autoint1.e
 Integration File signal 2: autoint2.e
 Quant Time: Sep 23 16:21:59 2021
 Quant Method : Z:\pestpcbsrv\HPCHEM1\ECD_D\Method\PD092221.M
 Quant Title : GC Extractables
 QLast Update : Thu Sep 23 12:18:33 2021
 Response via : Initial Calibration
 Integrator: ChemStation

Volume Inj. : 2 µl
 Signal #1 Phase : ZB-MR2 Signal #2 Phase: ZB-MR1
 Signal #1 Info : 30M x 0.32mm x0.2 Signal #2 Info : 30M x 0.32mm x 0.50µm

Compound	RT#1	RT#2	Resp#1	Resp#2	ng/ml	ng/ml

System Monitoring Compounds						
1) SA Tetrachlo...	3.490	4.012	43924350	135.6E6	59.313	23.618 #
28) SA Decachlor...	8.236	9.085	35838329	98294976	26.237	25.398
Target Compounds						
2) A alpha-BHC	3.932	4.408	5597779	84354461	4.984	10.032 #
3) MA gamma-BHC...	4.215	4.708	1440319	35378909	1.284	4.579 #
4) MA Heptachlor	4.513	5.197	145.2E6	944.9E6	121.704	130.223
5) MB Aldrin	4.767	5.478f	11563440	474.7E6	10.337	70.554 #
6) B beta-BHC	4.464	4.884	1908693	75823769	3.343	20.516 #
7) B delta-BHC	4.669	5.086	17645072	52346293	15.608	7.274 #
8) B Heptachlo...	0.000	5.880	0	350.3E6	N.D.	67.781 #
9) A Endosulfan I	5.524f	6.248	17731989	17420207	16.305	3.152 #
10) B gamma-Chl...	5.429	6.126	316.4E6	1800.3E6	262.001	300.156
11) B alpha-Chl...	5.487	6.199	255.3E6	1993.3E6	215.670	332.096 #
12) B 4,4'-DDE	5.653	6.354	-1270700	27473257	N.D.	4.763
13) MA Dieldrin	5.767f	6.504	16053189	149.3E6	13.851	25.342 #
14) MA Endrin	6.043	6.749f	9205510	7984454	8.700	1.620 #
15) B Endosulfa...	6.324	6.945	99601623	32626378	92.197	6.736 #
16) A 4,4'-DDD	6.164	6.862	-1616650	61618653	N.D.	12.538
17) MA 4,4'-DDT	6.407	7.149	2205380	5679247	2.004	1.124 #
18) B Endrin al...	6.482	7.064	17165937	72595686	19.369	18.543
19) B Endosulfa...	6.695	7.287	8178188	61638355	7.165	12.497 #
20) A Methoxychlor	6.951	7.608	5404267	22645762	7.908	8.605
21) B Endrin ke...	7.189	7.763	7966983	40836806	5.656	7.161 #
22) Mirex	0.000	8.232f	0	2645464	N.D.	0.670 #
23) Chlordane-1	4.362	5.008	71109272	522.6E6	2122.844	2360.428
24) Chlordane-2	4.862	5.478	85135424	474.7E6	2096.333	2052.025
25) Chlordane-3	5.429	6.126	316.4E6	1800.3E6	2685.379	2195.283
26) Chlordane-4	5.487	6.199	255.3E6	1993.3E6	2584.979	2078.126
27) Chlordane-5	6.324	7.009	99601623	396.0E6	2049.408	2130.835

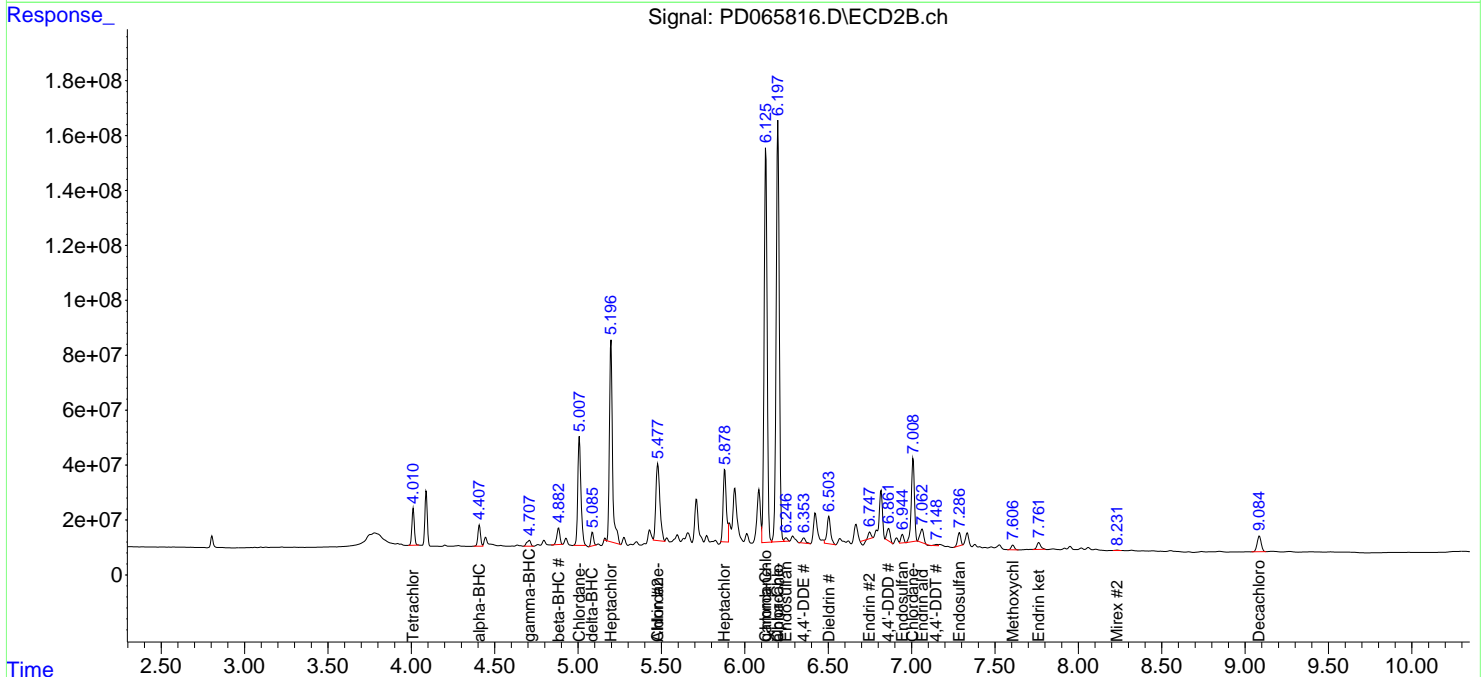
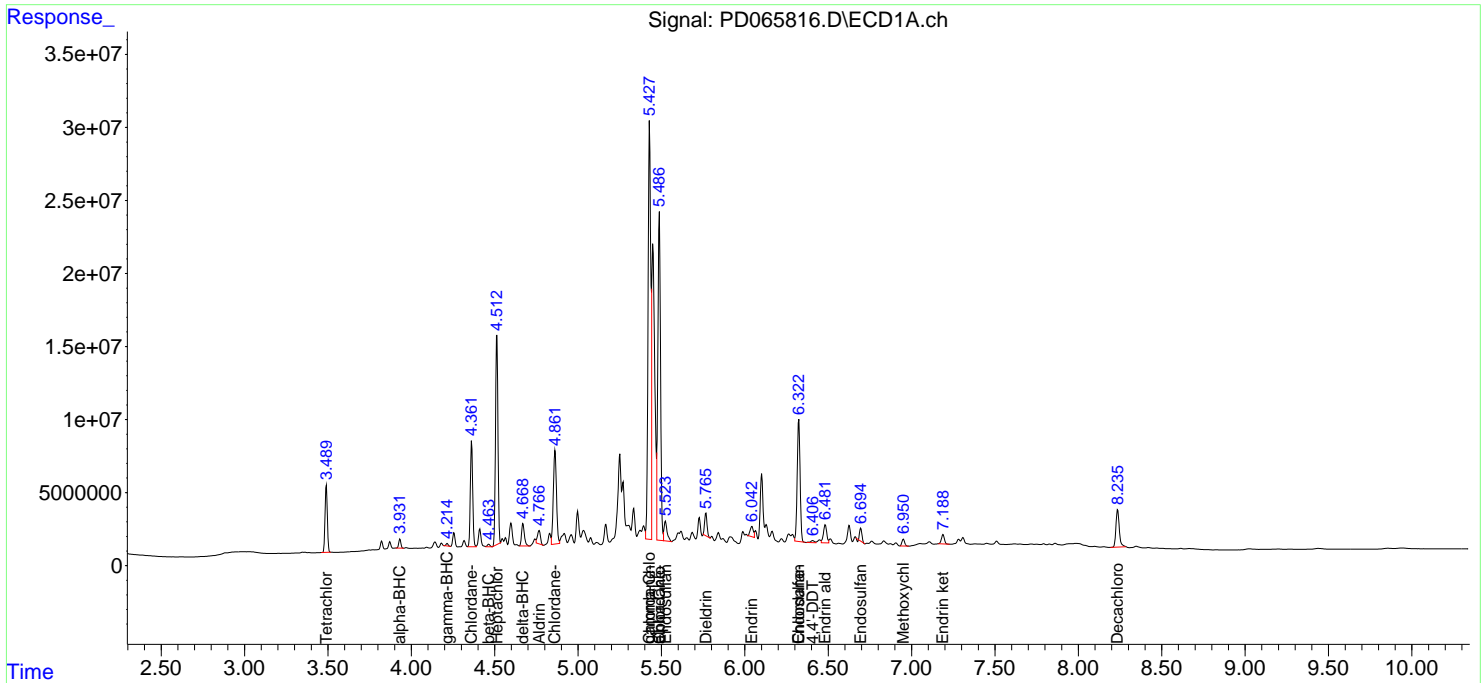
(f)=RT Delta > 1/2 Window (#)=Amounts differ by > 25% (m)=manual int.

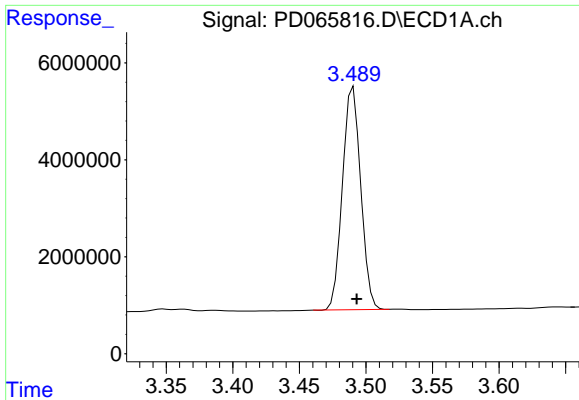
Data Path : Z:\pestpcbsrv\HPCHEM1\ECD_D\Data\PD092321\
 Data File : PD065816.D
 Signal(s) : Signal #1: ECD1A.ch Signal #2: ECD2B.ch
 Acq On : 23 Sep 2021 14:17
 Operator : AR\AJ
 Sample : M3702-11
 Misc :
 ALS Vial : 10 Sample Multiplier: 1

Instrument :
 ECD_D
 ClientSampleId :
 PT-CHLR-WP

Integration File signal 1: autoint1.e
 Integration File signal 2: autoint2.e
 Quant Time: Sep 23 16:21:59 2021
 Quant Method : Z:\pestpcbsrv\HPCHEM1\ECD_D\Method\PD092221.M
 Quant Title : GC Extractables
 QLast Update : Thu Sep 23 12:18:33 2021
 Response via : Initial Calibration
 Integrator: ChemStation

Volume Inj. : 2 µl
 Signal #1 Phase : ZB-MR2 Signal #2 Phase: ZB-MR1
 Signal #1 Info : 30M x 0.32mm x0.2 Signal #2 Info : 30M x 0.32mm x 0.50µm

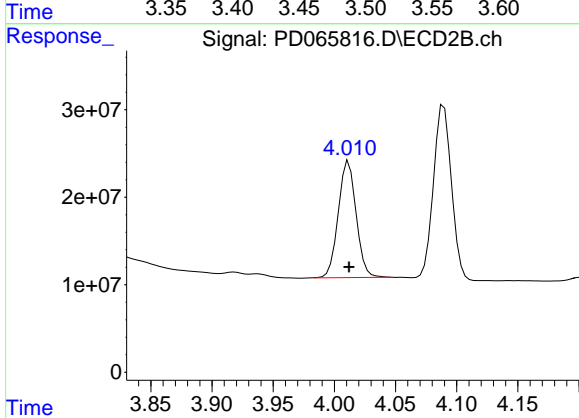




#1 Tetrachloro-m-xylene

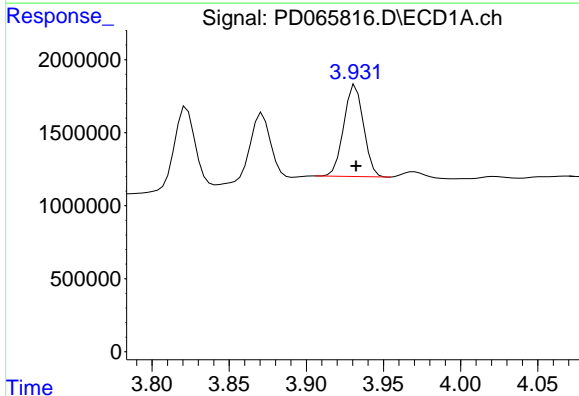
R.T.: 3.490 min
 Delta R.T.: -0.003 min
 Response: 43924350
 Conc: 59.31 ng/ml

Instrument :
 ECD_D
 ClientSampleId :
 PT-CHLR-WP



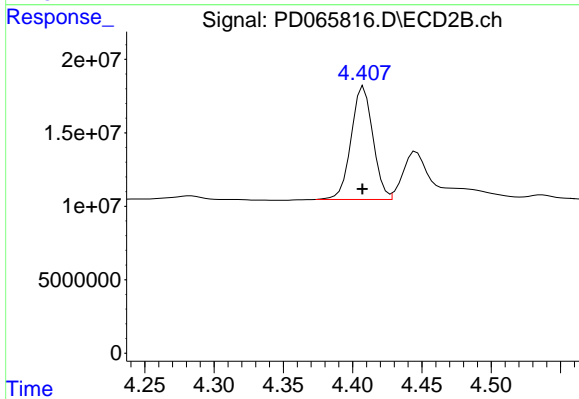
#1 Tetrachloro-m-xylene

R.T.: 4.012 min
 Delta R.T.: 0.000 min
 Response: 135620406
 Conc: 23.62 ng/ml



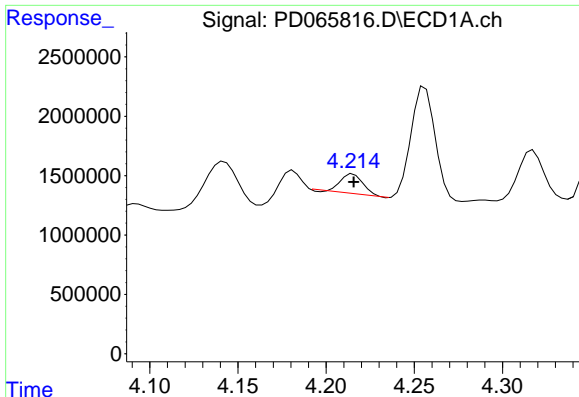
#2 alpha-BHC

R.T.: 3.932 min
 Delta R.T.: 0.000 min
 Response: 5597779
 Conc: 4.98 ng/ml



#2 alpha-BHC

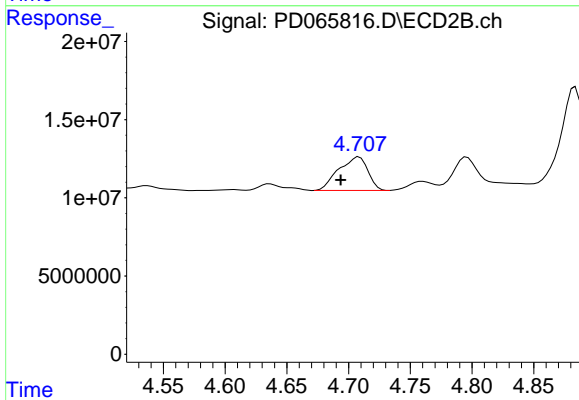
R.T.: 4.408 min
 Delta R.T.: 0.001 min
 Response: 84354461
 Conc: 10.03 ng/ml



#3 gamma-BHC (Lindane)

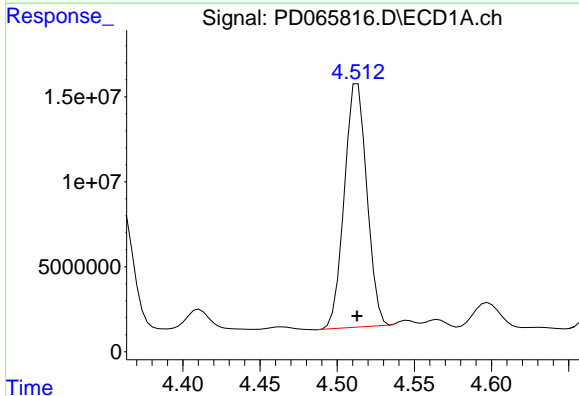
R.T.: 4.215 min
 Delta R.T.: 0.000 min
 Response: 1440319
 Conc: 1.28 ng/ml

Instrument :
 ECD_D
 ClientSampleId :
 PT-CHLR-WP



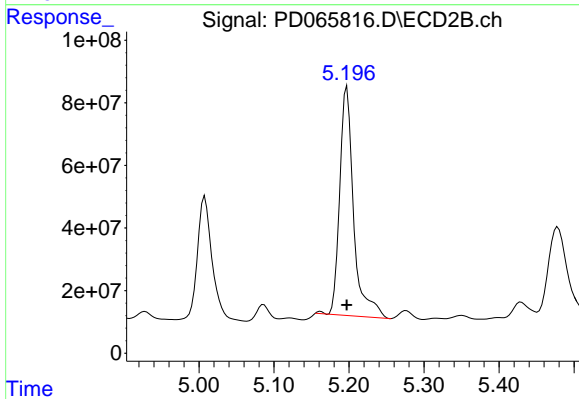
#3 gamma-BHC (Lindane)

R.T.: 4.708 min
 Delta R.T.: 0.015 min
 Response: 35378909
 Conc: 4.58 ng/ml



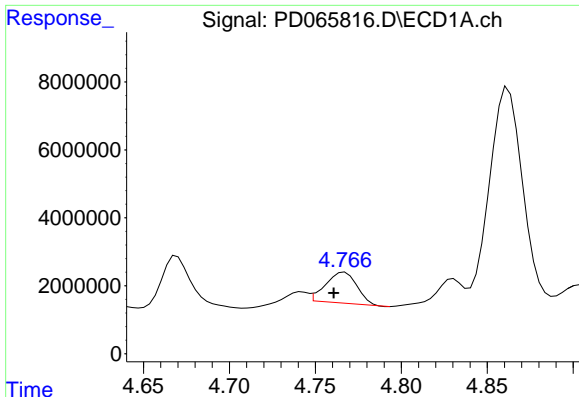
#4 Heptachlor

R.T.: 4.513 min
 Delta R.T.: 0.000 min
 Response: 145168915
 Conc: 121.70 ng/ml



#4 Heptachlor

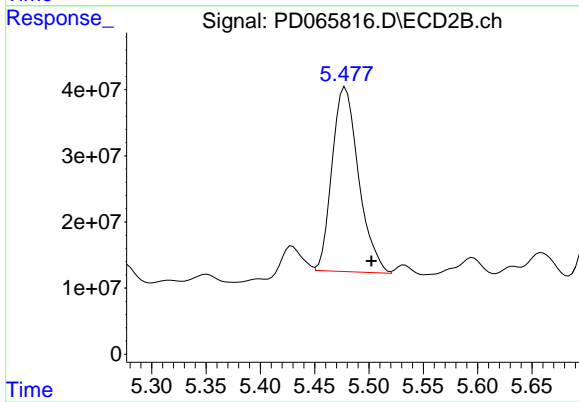
R.T.: 5.197 min
 Delta R.T.: 0.000 min
 Response: 944868156
 Conc: 130.22 ng/ml



#5 Aldrin

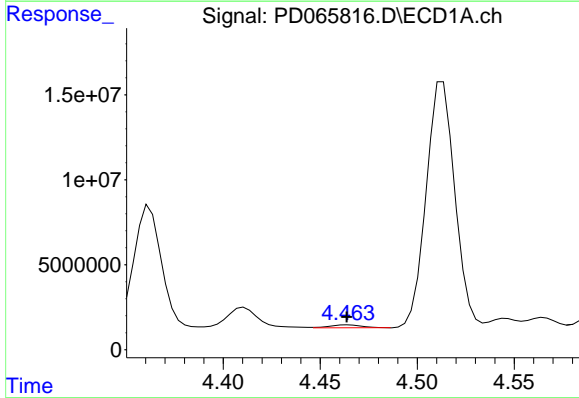
R.T.: 4.767 min
 Delta R.T.: 0.006 min
 Response: 11563440
 Conc: 10.34 ng/ml

Instrument :
 ECD_D
 ClientSampleId :
 PT-CHLR-WP



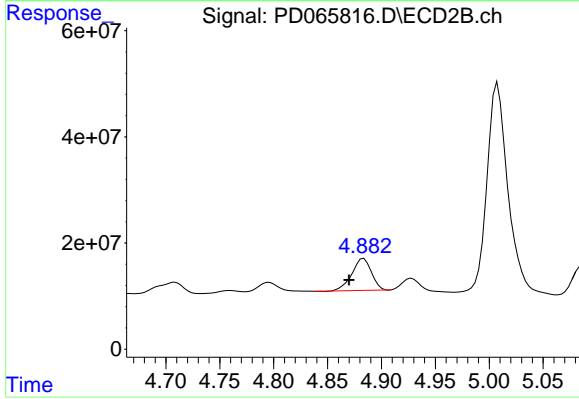
#5 Aldrin

R.T.: 5.478 min
 Delta R.T.: -0.024 min
 Response: 474658479
 Conc: 70.55 ng/ml



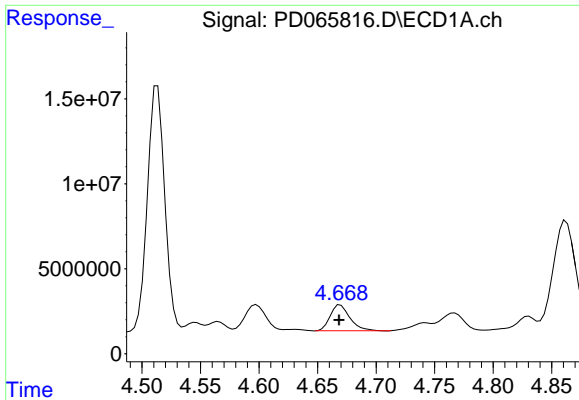
#6 beta-BHC

R.T.: 4.464 min
 Delta R.T.: 0.000 min
 Response: 1908693
 Conc: 3.34 ng/ml



#6 beta-BHC

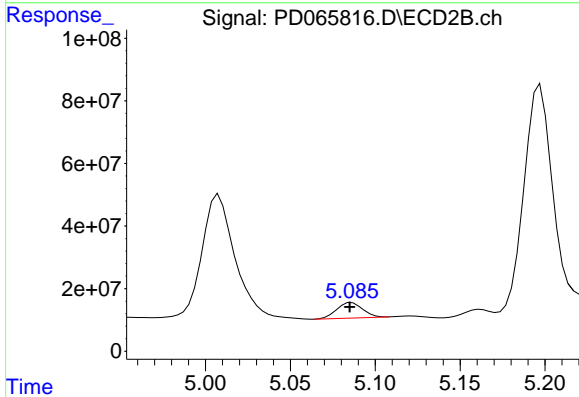
R.T.: 4.884 min
 Delta R.T.: 0.014 min
 Response: 75823769
 Conc: 20.52 ng/ml



#7 delta-BHC

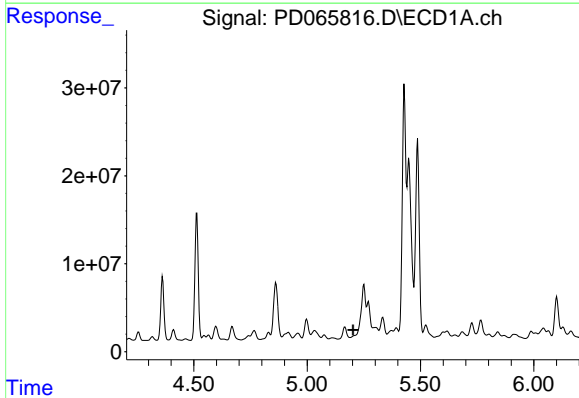
R.T.: 4.669 min
 Delta R.T.: 0.001 min
 Response: 17645072
 Conc: 15.61 ng/ml

Instrument :
 ECD_D
 ClientSampleId :
 PT-CHLR-WP



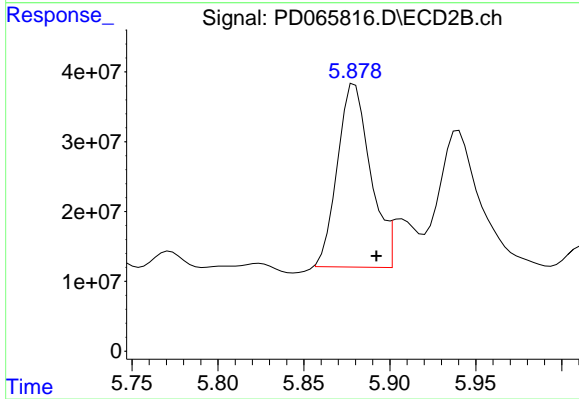
#7 delta-BHC

R.T.: 5.086 min
 Delta R.T.: 0.001 min
 Response: 52346293
 Conc: 7.27 ng/ml



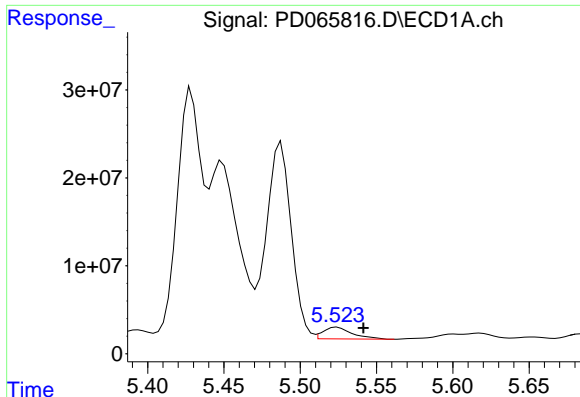
#8 Heptachlor epoxide

R.T.: 0.000 min
 Exp R.T. : 5.203 min
 Response: 0
 Conc: N.D.



#8 Heptachlor epoxide

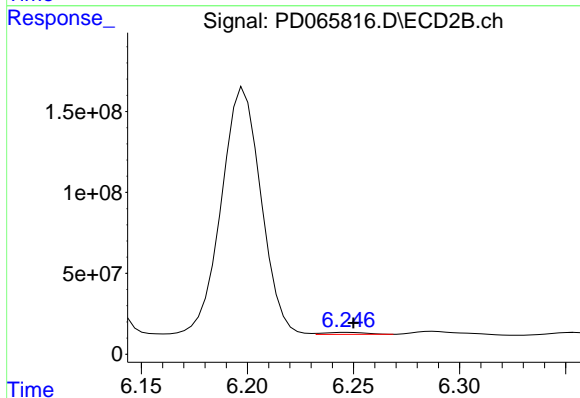
R.T.: 5.880 min
 Delta R.T.: -0.012 min
 Response: 350285040
 Conc: 67.78 ng/ml



#9 Endosulfan I

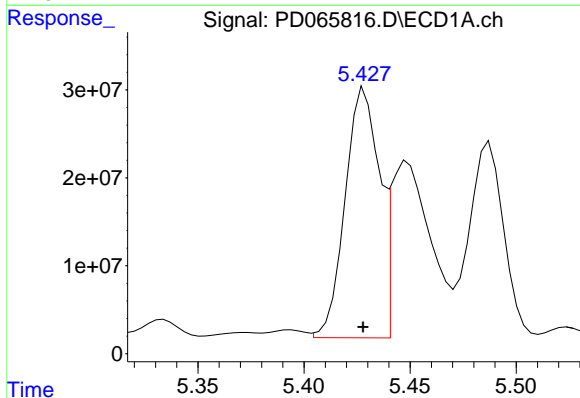
R.T.: 5.524 min
 Delta R.T.: -0.017 min
 Response: 17731989
 Conc: 16.30 ng/ml

Instrument :
 ECD_D
 ClientSampleId :
 PT-CHLR-WP



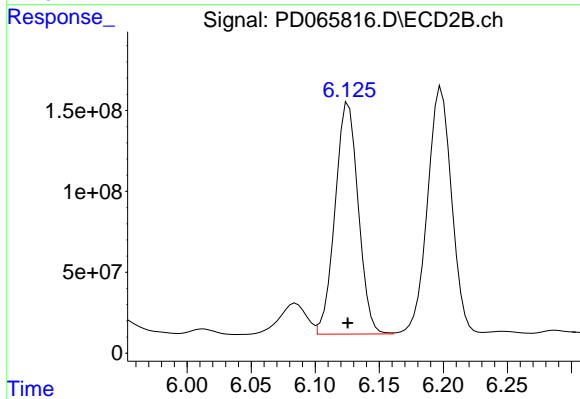
#9 Endosulfan I

R.T.: 6.248 min
 Delta R.T.: -0.002 min
 Response: 17420207
 Conc: 3.15 ng/ml



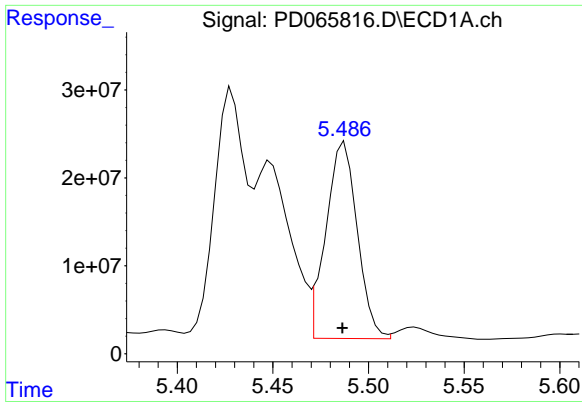
#10 gamma-Chlordane

R.T.: 5.429 min
 Delta R.T.: 0.000 min
 Response: 316376372
 Conc: 262.00 ng/ml



#10 gamma-Chlordane

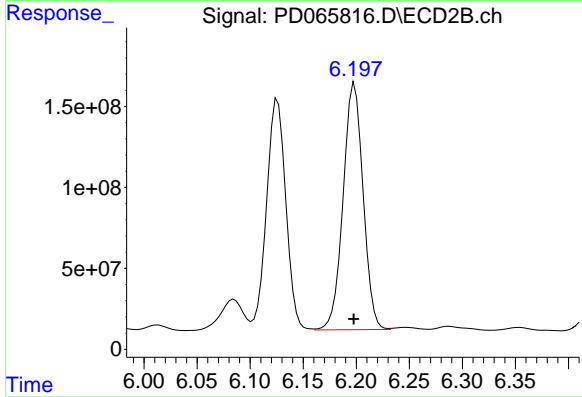
R.T.: 6.126 min
 Delta R.T.: 0.000 min
 Response: 1800255859
 Conc: 300.16 ng/ml



#11 alpha-Chlordane

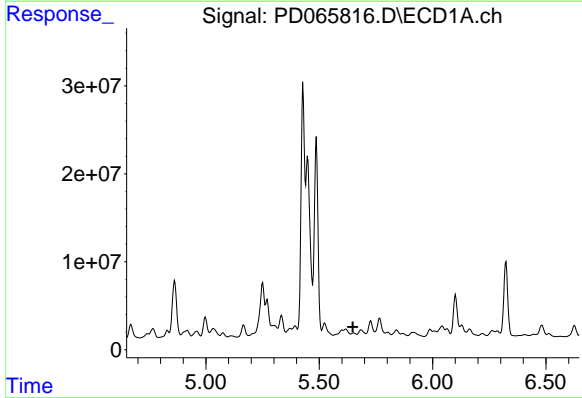
R.T.: 5.487 min
 Delta R.T.: 0.001 min
 Response: 255303921
 Conc: 215.67 ng/ml

Instrument :
 ECD_D
 ClientSampleId :
 PT-CHLR-WP



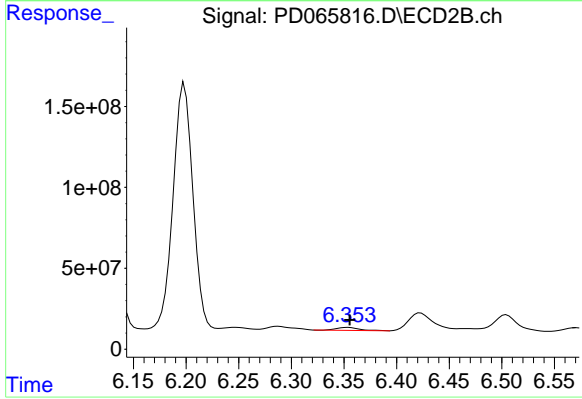
#11 alpha-Chlordane

R.T.: 6.199 min
 Delta R.T.: 0.000 min
 Response: 1993258154
 Conc: 332.10 ng/ml



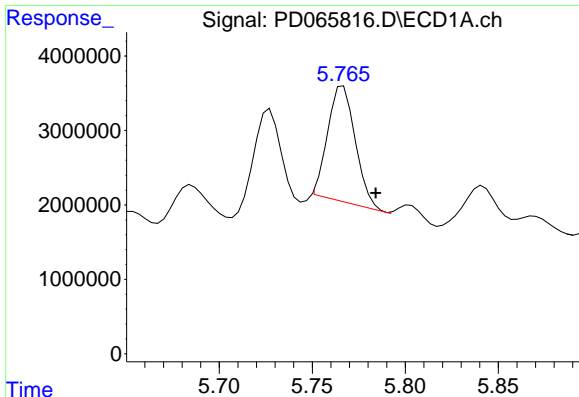
#12 4,4'-DDE

R.T.: 5.653 min
 Delta R.T.: 0.004 min
 Response: -1270700
 Conc: N.D.



#12 4,4'-DDE

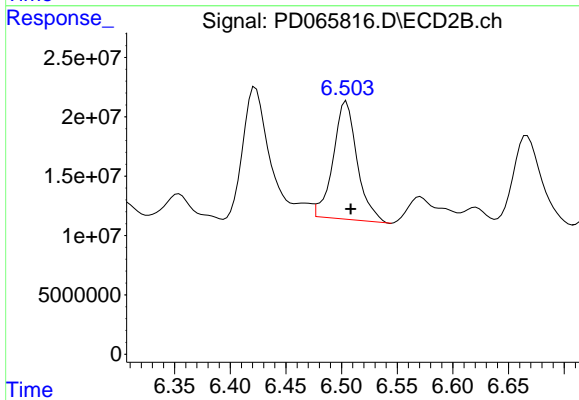
R.T.: 6.354 min
 Delta R.T.: -0.002 min
 Response: 27473257
 Conc: 4.76 ng/ml



#13 Dieldrin

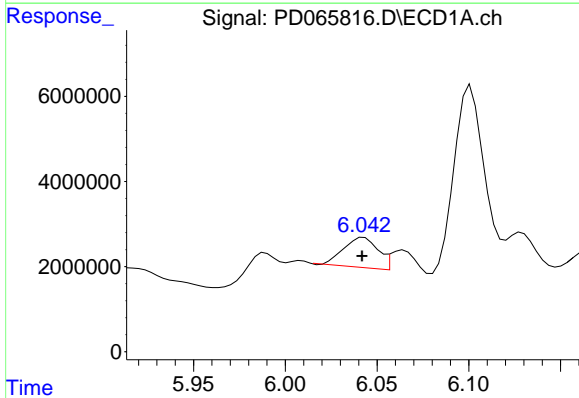
R.T.: 5.767 min
 Delta R.T.: -0.017 min
 Response: 16053189
 Conc: 13.85 ng/ml

Instrument :
 ECD_D
 ClientSampleId :
 PT-CHLR-WP



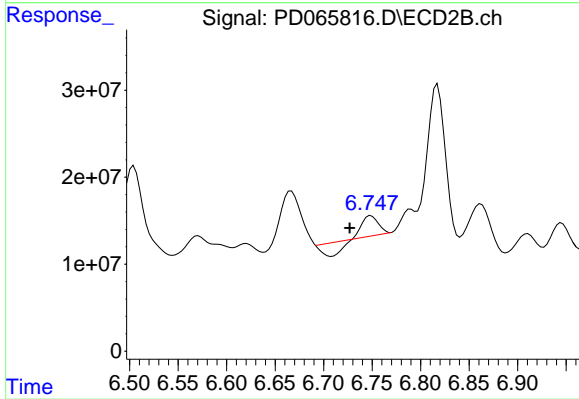
#13 Dieldrin

R.T.: 6.504 min
 Delta R.T.: -0.004 min
 Response: 149345090
 Conc: 25.34 ng/ml



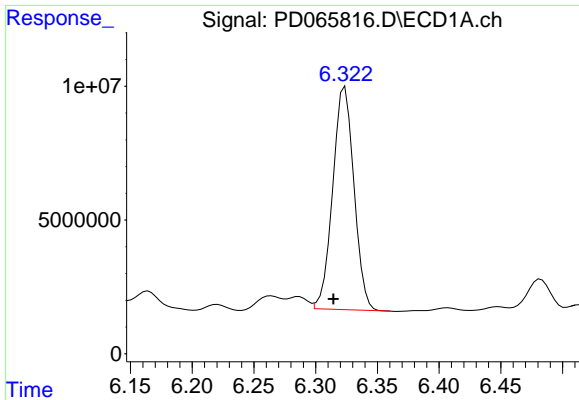
#14 Endrin

R.T.: 6.043 min
 Delta R.T.: 0.001 min
 Response: 9205510
 Conc: 8.70 ng/ml



#14 Endrin

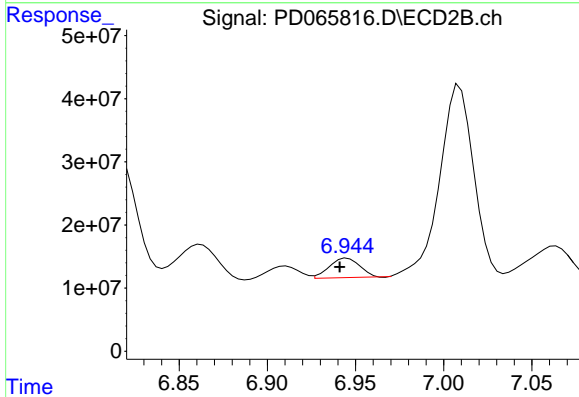
R.T.: 6.749 min
 Delta R.T.: 0.022 min
 Response: 7984454
 Conc: 1.62 ng/ml



#15 Endosulfan II

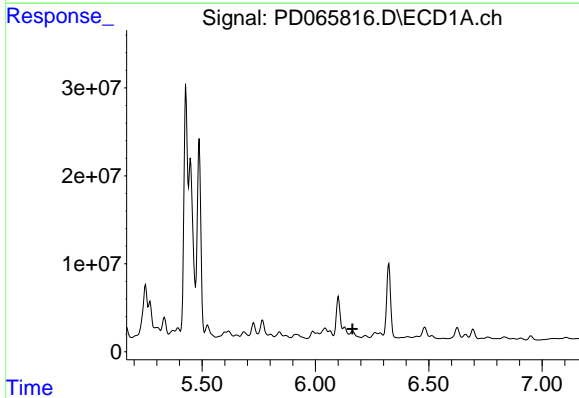
R.T.: 6.324 min
 Delta R.T.: 0.009 min
 Response: 99601623
 Conc: 92.20 ng/ml

Instrument :
 ECD_D
 ClientSampleId :
 PT-CHLR-WP



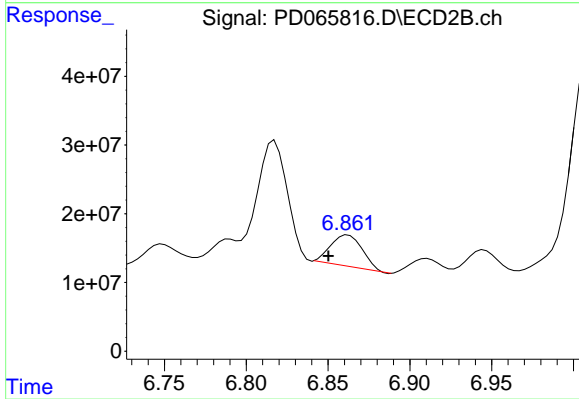
#15 Endosulfan II

R.T.: 6.945 min
 Delta R.T.: 0.004 min
 Response: 32626378
 Conc: 6.74 ng/ml



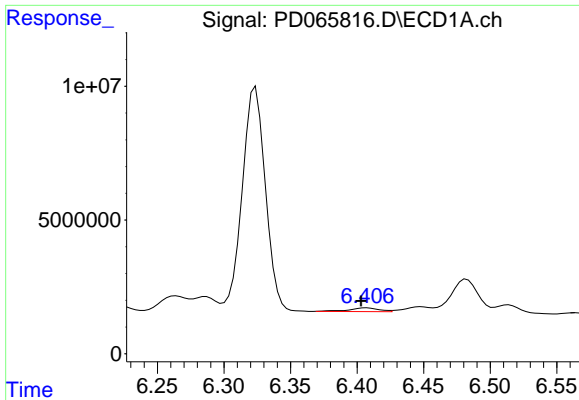
#16 4,4'-DDD

R.T.: 6.164 min
 Delta R.T.: 0.000 min
 Response: -1616650
 Conc: N.D.



#16 4,4'-DDD

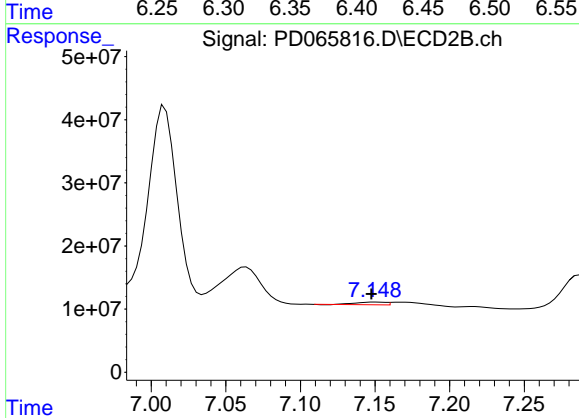
R.T.: 6.862 min
 Delta R.T.: 0.012 min
 Response: 61618653
 Conc: 12.54 ng/ml



#17 4,4'-DDT

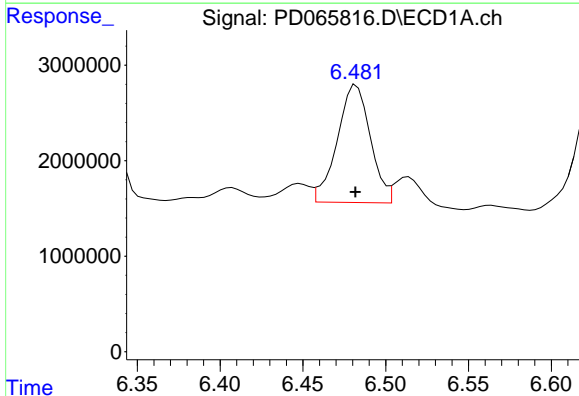
R.T.: 6.407 min
 Delta R.T.: 0.004 min
 Response: 2205380
 Conc: 2.00 ng/ml

Instrument :
 ECD_D
 ClientSampleId :
 PT-CHLR-WP



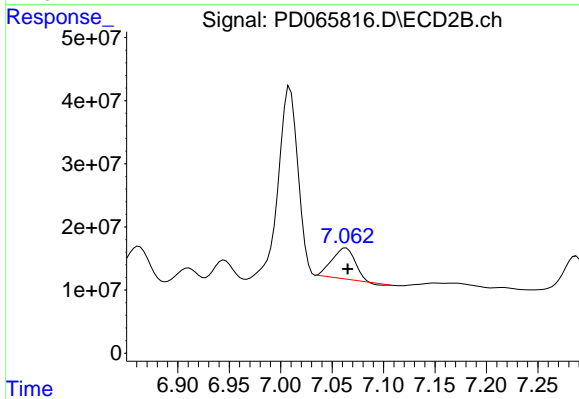
#17 4,4'-DDT

R.T.: 7.149 min
 Delta R.T.: 0.002 min
 Response: 5679247
 Conc: 1.12 ng/ml



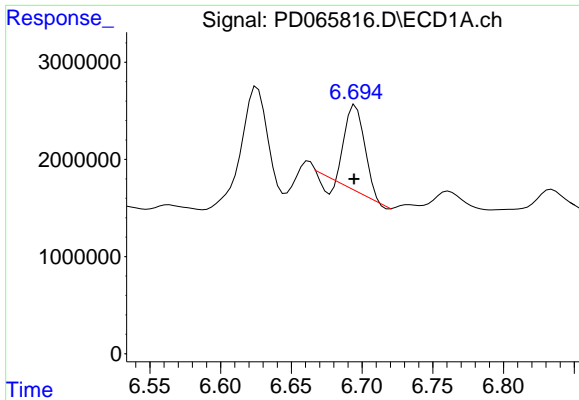
#18 Endrin aldehyde

R.T.: 6.482 min
 Delta R.T.: 0.000 min
 Response: 17165937
 Conc: 19.37 ng/ml



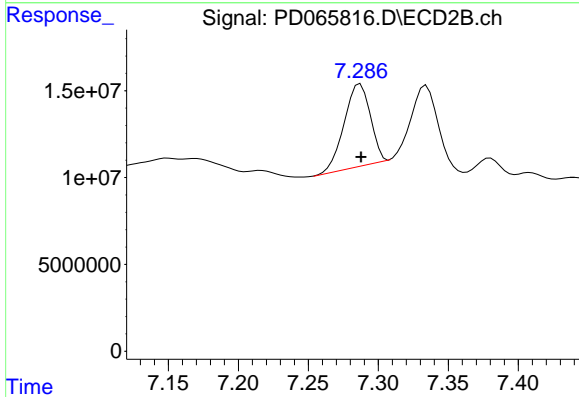
#18 Endrin aldehyde

R.T.: 7.064 min
 Delta R.T.: -0.001 min
 Response: 72595686
 Conc: 18.54 ng/ml

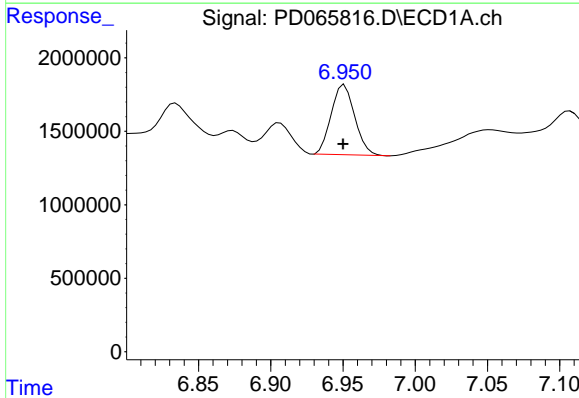


#19 Endosulfan Sulfate
 R.T.: 6.695 min
 Delta R.T.: 0.000 min
 Response: 8178188
 Conc: 7.17 ng/ml

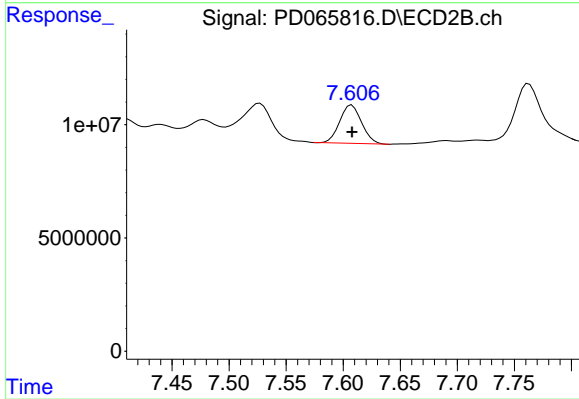
Instrument :
 ECD_D
 ClientSampleId :
 PT-CHLR-WP



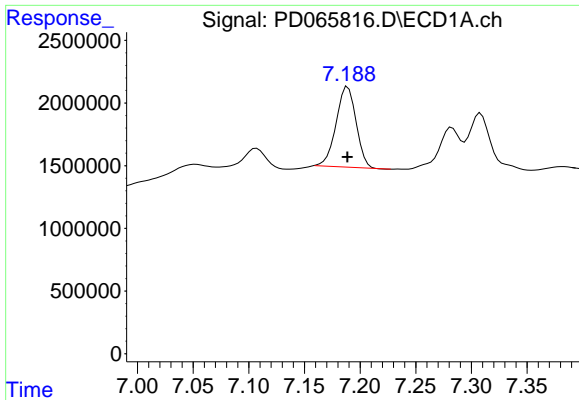
#19 Endosulfan Sulfate
 R.T.: 7.287 min
 Delta R.T.: 0.000 min
 Response: 6163835
 Conc: 12.50 ng/ml



#20 Methoxychlor
 R.T.: 6.951 min
 Delta R.T.: 0.000 min
 Response: 5404267
 Conc: 7.91 ng/ml



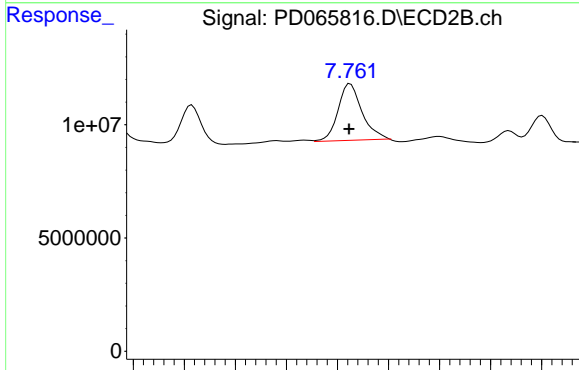
#20 Methoxychlor
 R.T.: 7.608 min
 Delta R.T.: 0.000 min
 Response: 22645762
 Conc: 8.61 ng/ml



#21 Endrin ketone

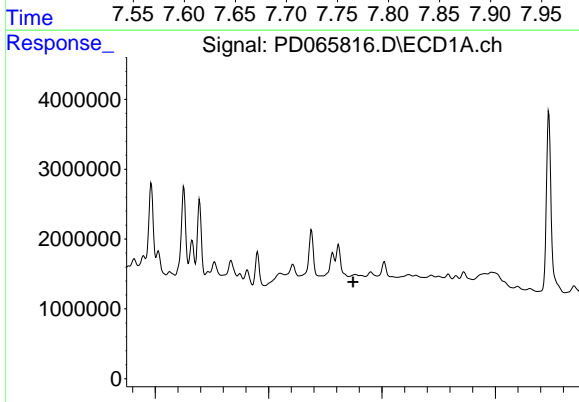
R.T.: 7.189 min
 Delta R.T.: 0.000 min
 Response: 7966983
 Conc: 5.66 ng/ml

Instrument :
 ECD_D
 ClientSampleId :
 PT-CHLR-WP



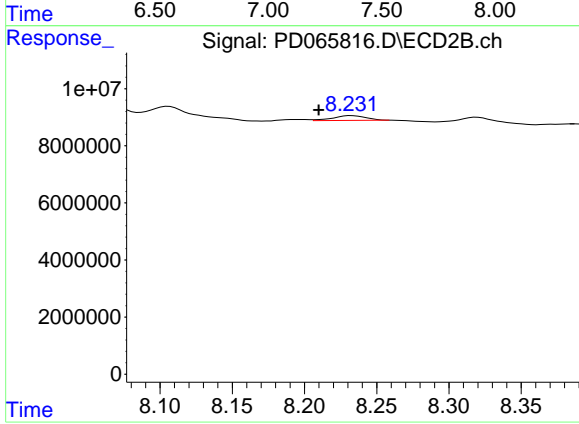
#21 Endrin ketone

R.T.: 7.763 min
 Delta R.T.: 0.001 min
 Response: 40836806
 Conc: 7.16 ng/ml



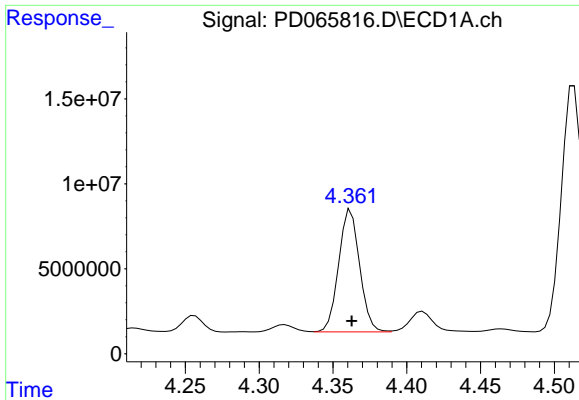
#22 Mirex

R.T.: 0.000 min
 Exp R.T. : 7.373 min
 Response: 0
 Conc: N.D.



#22 Mirex

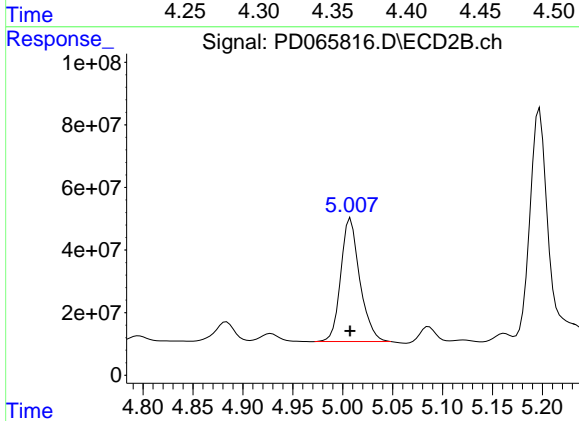
R.T.: 8.232 min
 Delta R.T.: 0.022 min
 Response: 2645464
 Conc: 0.67 ng/ml



#23 Chlordane-1

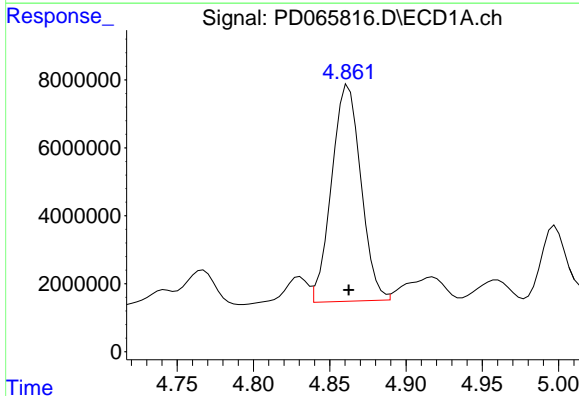
R.T.: 4.362 min
 Delta R.T.: 0.000 min
 Response: 71109272
 Conc: 2122.84 ng/m

Instrument :
 ECD_D
 ClientSampleId :
 PT-CHLR-WP



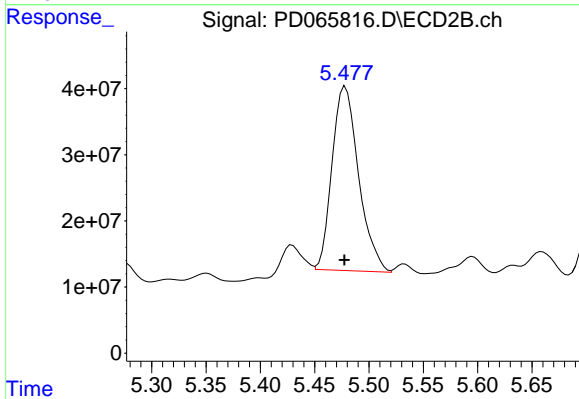
#23 Chlordane-1

R.T.: 5.008 min
 Delta R.T.: 0.000 min
 Response: 522630784
 Conc: 2360.43 ng/ml



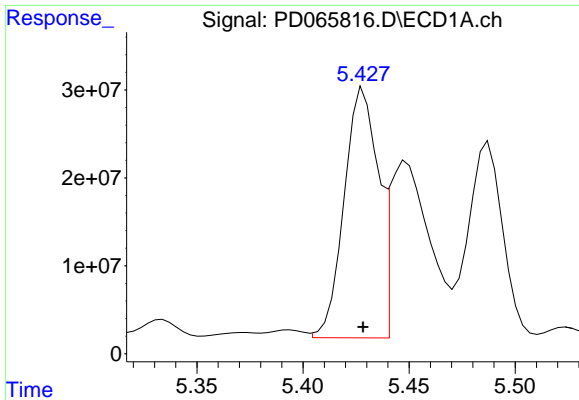
#24 Chlordane-2

R.T.: 4.862 min
 Delta R.T.: 0.000 min
 Response: 85135424
 Conc: 2096.33 ng/ml



#24 Chlordane-2

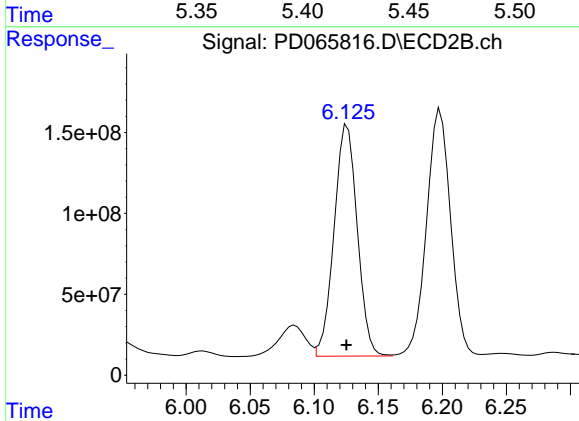
R.T.: 5.478 min
 Delta R.T.: 0.000 min
 Response: 474658479
 Conc: 2052.02 ng/ml



#25 Chlordane-3

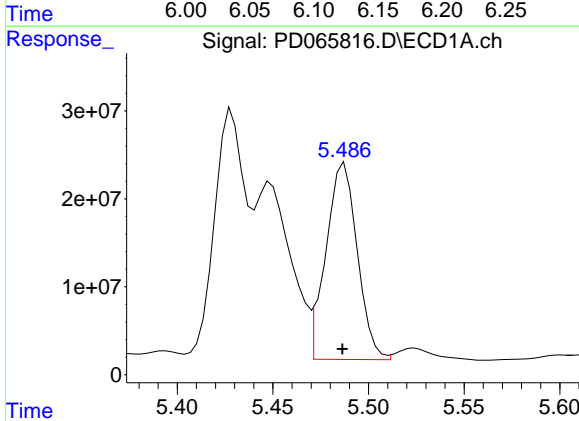
R.T.: 5.429 min
 Delta R.T.: 0.000 min
 Response: 316376372
 Conc: 2685.38 ng/m

Instrument :
 ECD_D
 ClientSampleId :
 PT-CHLR-WP



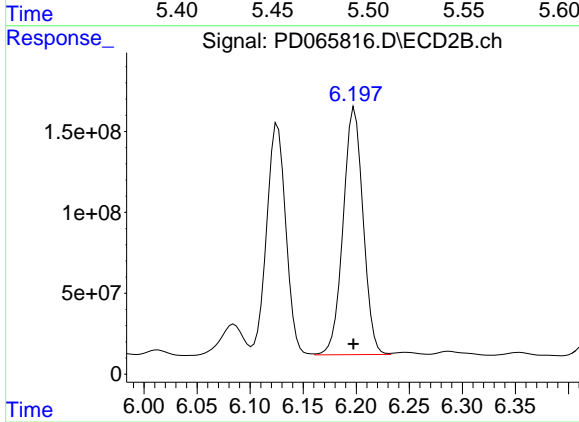
#25 Chlordane-3

R.T.: 6.126 min
 Delta R.T.: 0.000 min
 Response: 1800255859
 Conc: 2195.28 ng/ml



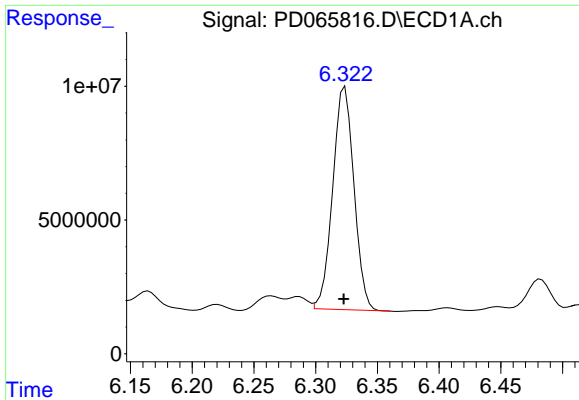
#26 Chlordane-4

R.T.: 5.487 min
 Delta R.T.: 0.001 min
 Response: 255303921
 Conc: 2584.98 ng/ml



#26 Chlordane-4

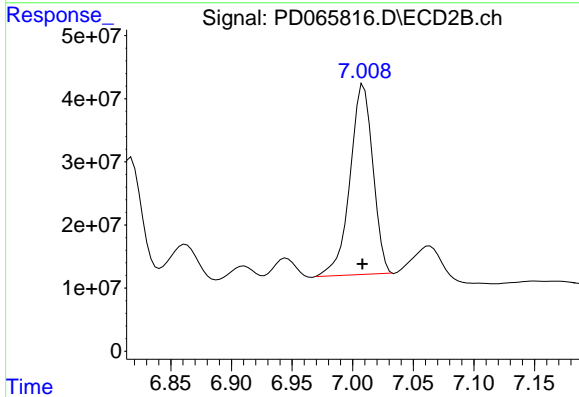
R.T.: 6.199 min
 Delta R.T.: 0.001 min
 Response: 1993258154
 Conc: 2078.13 ng/ml



#27 Chlordane-5

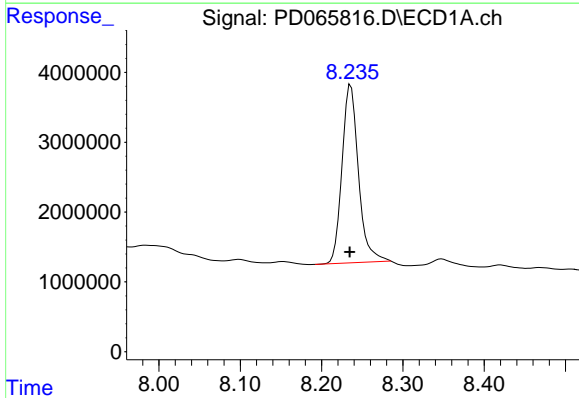
R.T.: 6.324 min
 Delta R.T.: 0.001 min
 Response: 99601623
 Conc: 2049.41 ng/ml

Instrument :
 ECD_D
 ClientSampleId :
 PT-CHLR-WP



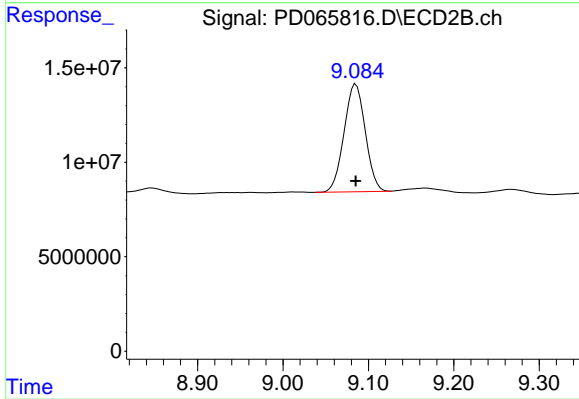
#27 Chlordane-5

R.T.: 7.009 min
 Delta R.T.: 0.001 min
 Response: 395993907
 Conc: 2130.83 ng/ml



#28 Decachlorobiphenyl

R.T.: 8.236 min
 Delta R.T.: 0.001 min
 Response: 35838329
 Conc: 26.24 ng/ml



#28 Decachlorobiphenyl

R.T.: 9.085 min
 Delta R.T.: 0.000 min
 Response: 98294976
 Conc: 25.40 ng/ml