

Data Path : Z:\pestpcbsrv\HPCHEM1\ECD_D\Data\PD092321\
 Data File : PD065817.D
 Signal(s) : Signal #1: ECD1A.ch Signal #2: ECD2B.ch
 Acq On : 23 Sep 2021 14:31
 Operator : AR\AJ
 Sample : M3702-13
 Misc :
 ALS Vial : 11 Sample Multiplier: 1

Instrument :
 ECD_D
 ClientSampleId :
 PT-TXP-WP

Integration File signal 1: autoint1.e
 Integration File signal 2: autoint2.e
 Quant Time: Sep 23 17:44:13 2021
 Quant Method : Z:\pestpcbsrv\HPCHEM1\ECD_D\Method\DTX092221.M
 Quant Title : GC Extractables
 QLast Update : Thu Sep 23 05:04:03 2021
 Response via : Initial Calibration
 Integrator: ChemStation

Volume Inj. : 1 µl
 Signal #1 Phase : ZB-MR2 Signal #2 Phase: ZB-MR1
 Signal #1 Info : 30M x 0.32mm x0.2 Signal #2 Info : 30M x 0.32mm x 0.50µm

Compound	RT#1	RT#2	Resp#1	Resp#2	ng/ml	ng/ml

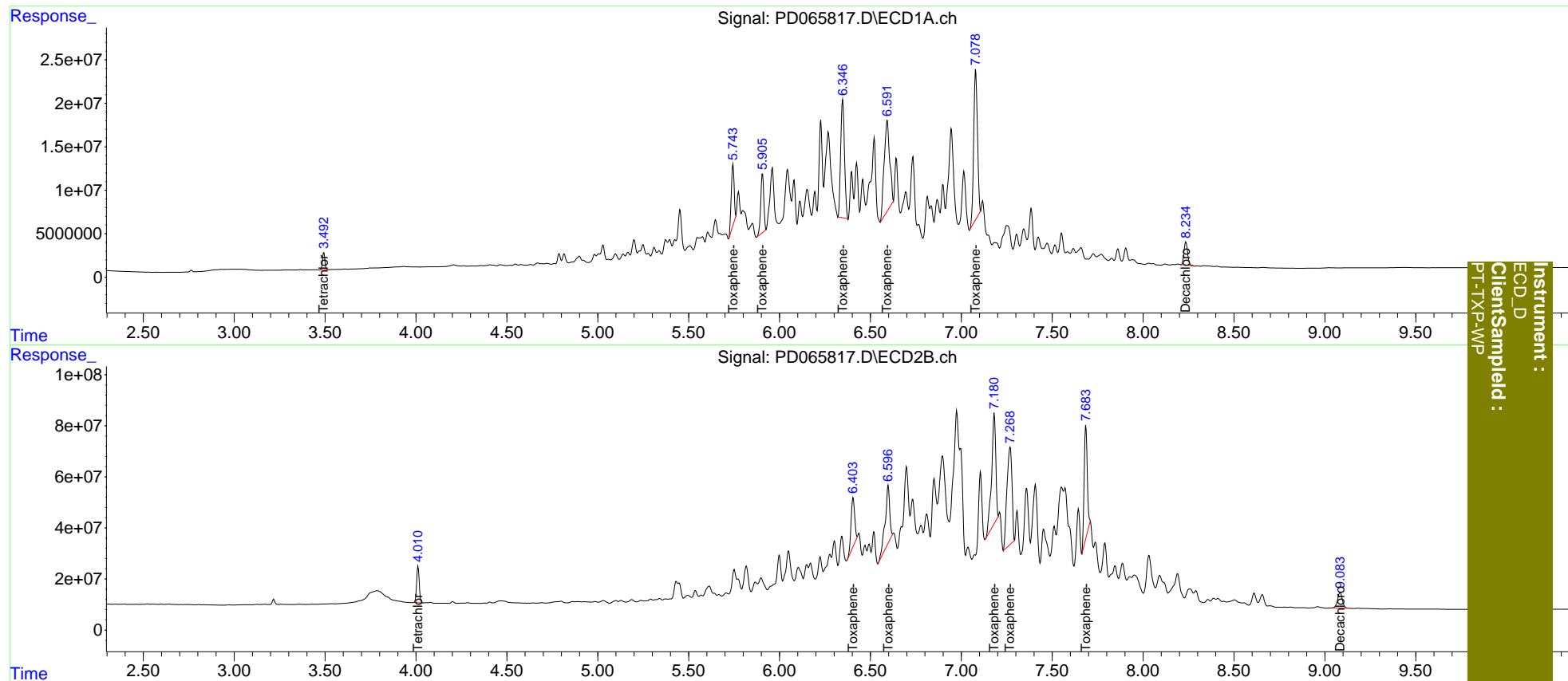
System Monitoring Compounds						
1) SA Tetrachlo...	3.493	4.012	17877282	143.1E6	22.333	23.166
7) SA Decachlor...	8.235	9.084	36016073	110.0E6	24.844	26.706
Target Compounds						
2) Toxaphene-1	5.744	6.405	75802757	259.7E6	8250.167	8062.451
3) Toxaphene-2	5.906	6.598	79254078	383.2E6	8014.520	7094.423
4) Toxaphene-3	6.348	7.182	197.4E6	688.8E6	8967.784	6844.930
5) Toxaphene-4	6.593	7.269	219.2E6	730.0E6	8805.652	7500.881
6) Toxaphene-5	7.079	7.686	246.7E6	540.9E6	8252.703	6952.514

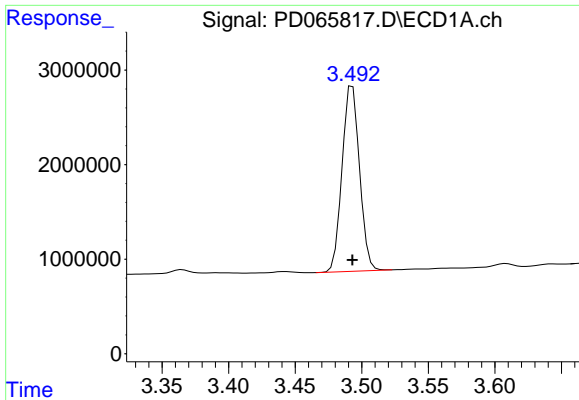
(f)=RT Delta > 1/2 Window (#)=Amounts differ by > 25% (m)=manual int.

Data Path : Z:\pestpcbsrv\HPCHEM1\ECD_D\Data\PD092321\
 Data File : PD065817.D
 Signal(s) : Signal #1: ECD1A.ch Signal #2: ECD2B.ch
 Acq On : 23 Sep 2021 14:31
 Operator : AR\AJ
 Sample : M3702-13
 Misc :
 ALS Vial : 11 Sample Multiplier: 1

Integration File signal 1: autoint1.e
 Integration File signal 2: autoint2.e
 Quant Time: Sep 23 17:44:13 2021
 Quant Method : Z:\pestpcbsrv\HPCHEM1\ECD_D\Method\DTX092221.M
 Quant Title : GC Extractables
 QLast Update : Thu Sep 23 05:04:03 2021
 Response via : Initial Calibration
 Integrator: ChemStation

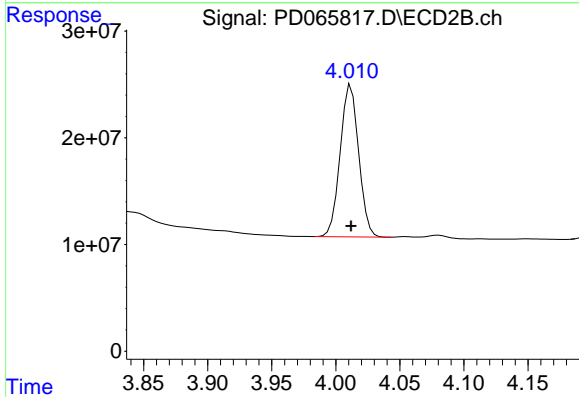
Volume Inj. : 1 µl
 Signal #1 Phase : ZB-MR2 Signal #2 Phase: ZB-MR1
 Signal #1 Info : 30M x 0.32mm x0.2 Signal #2 Info : 30M x 0.32mm x 0.50µm



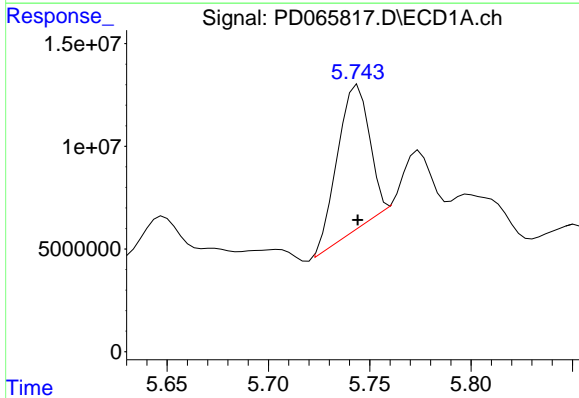


#1 Tetrachloro-m-xylene
 R.T.: 3.493 min
 Delta R.T.: 0.000 min
 Response: 17877282
 Conc: 22.33 ng/ml

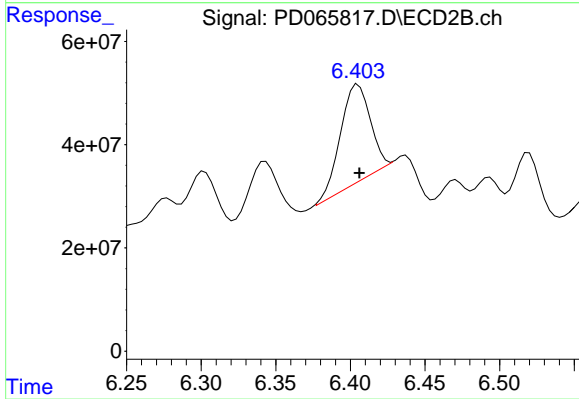
Instrument :
 ECD_D
 ClientSampleId :
 PT-TXP-WP



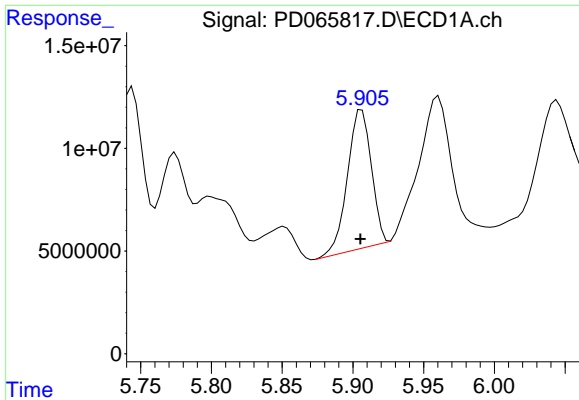
#1 Tetrachloro-m-xylene
 R.T.: 4.012 min
 Delta R.T.: 0.000 min
 Response: 143130147
 Conc: 23.17 ng/ml



#2 Toxaphene-1
 R.T.: 5.744 min
 Delta R.T.: 0.000 min
 Response: 75802757
 Conc: 8250.17 ng/ml



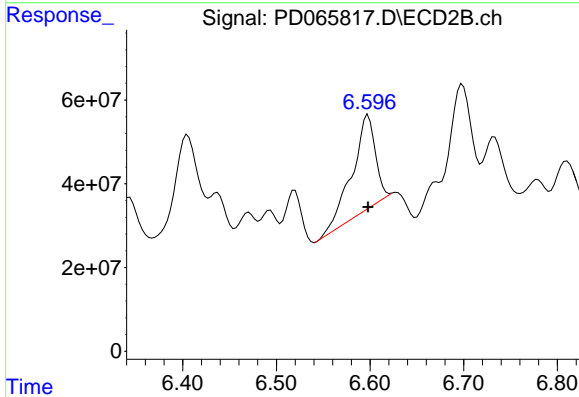
#2 Toxaphene-1
 R.T.: 6.405 min
 Delta R.T.: 0.000 min
 Response: 259721882
 Conc: 8062.45 ng/ml



#3 Toxaphene-2

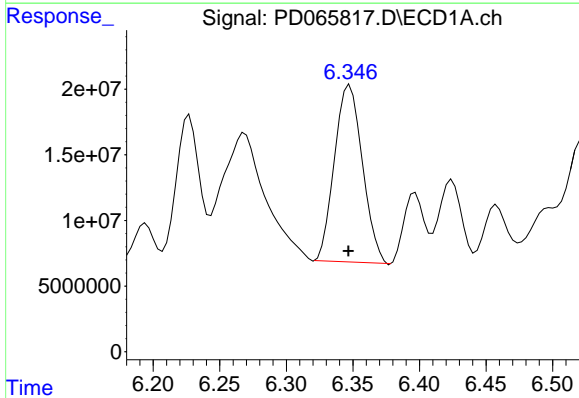
R.T.: 5.906 min
 Delta R.T.: 0.001 min
 Response: 79254078
 Conc: 8014.52 ng/m

Instrument :
 ECD_D
 ClientSampleId :
 PT-TXP-WP



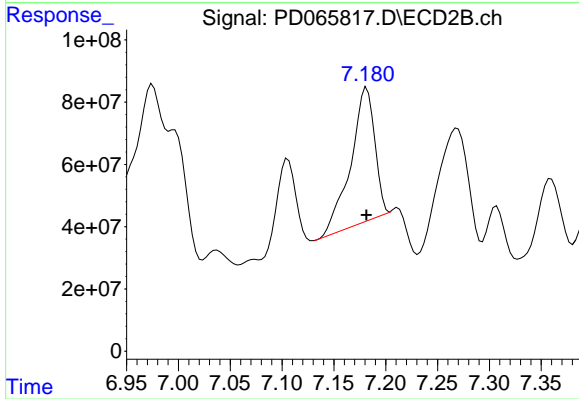
#3 Toxaphene-2

R.T.: 6.598 min
 Delta R.T.: 0.000 min
 Response: 383159288
 Conc: 7094.42 ng/ml



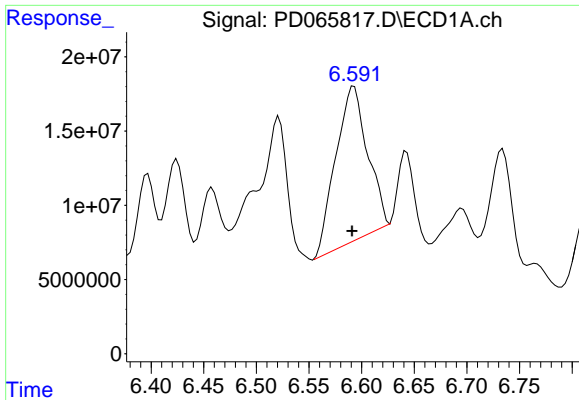
#4 Toxaphene-3

R.T.: 6.348 min
 Delta R.T.: 0.001 min
 Response: 197398805
 Conc: 8967.78 ng/ml



#4 Toxaphene-3

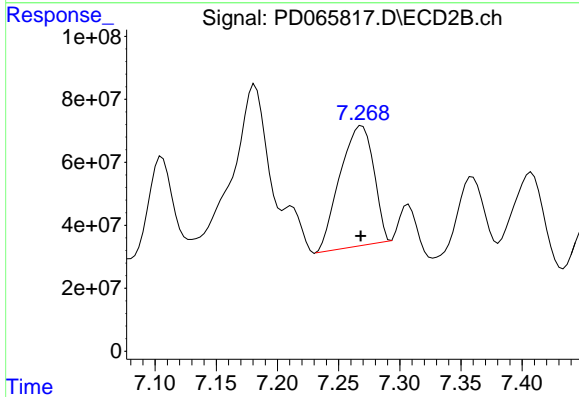
R.T.: 7.182 min
 Delta R.T.: 0.000 min
 Response: 688783642
 Conc: 6844.93 ng/ml



#5 Toxaphene-4

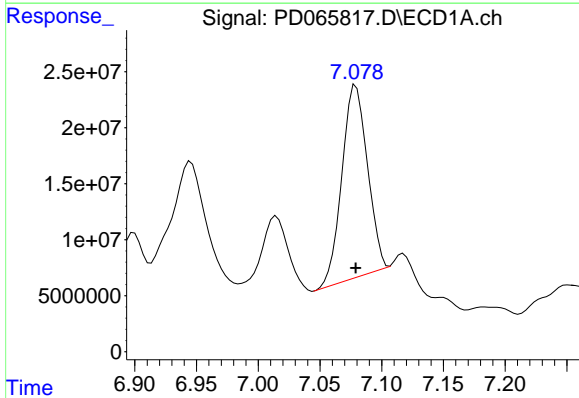
R.T.: 6.593 min
 Delta R.T.: 0.002 min
 Response: 219246086
 Conc: 8805.65 ng/m

Instrument :
 ECD_D
 ClientSampleId :
 PT-TXP-WP



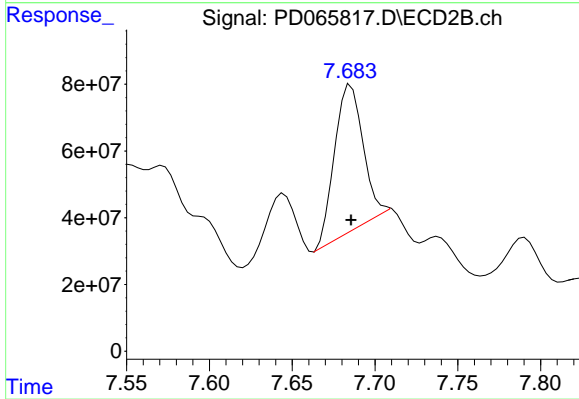
#5 Toxaphene-4

R.T.: 7.269 min
 Delta R.T.: 0.001 min
 Response: 729997083
 Conc: 7500.88 ng/ml



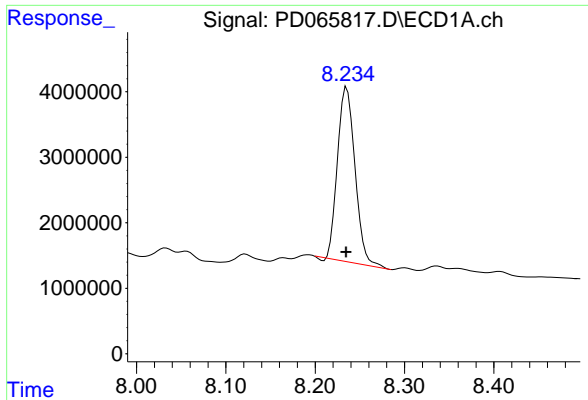
#6 Toxaphene-5

R.T.: 7.079 min
 Delta R.T.: 0.000 min
 Response: 246658176
 Conc: 8252.70 ng/ml



#6 Toxaphene-5

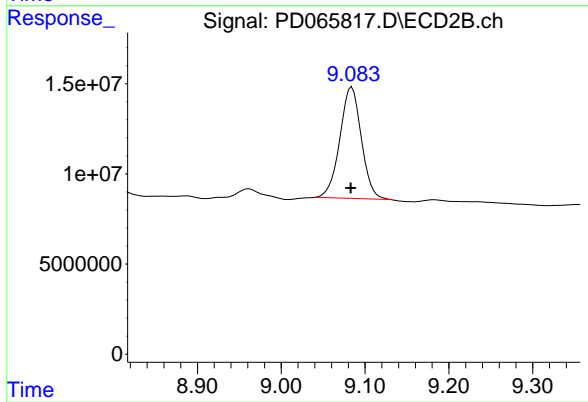
R.T.: 7.686 min
 Delta R.T.: 0.000 min
 Response: 540883169
 Conc: 6952.51 ng/ml



#7 Decachlorobiphenyl

R.T.: 8.235 min
Delta R.T.: 0.000 min
Response: 36016073
Conc: 24.84 ng/ml

Instrument :
ECD_D
ClientSampleId :
PT-TXP-WP



#7 Decachlorobiphenyl

R.T.: 9.084 min
Delta R.T.: 0.001 min
Response: 110018971
Conc: 26.71 ng/ml