

Data Path : Z:\pestpcbsrv\HPCHEM1\ECD\_D\Data\PD092322\  
 Data File : PD071986.D  
 Signal(s) : Signal #1: ECD1A.ch Signal #2: ECD2B.ch  
 Acq On : 22 Sep 2022 15:04  
 Operator : AR\AJ  
 Sample : N4706-02  
 Misc :  
 ALS Vial : 7 Sample Multiplier: 1

Instrument :  
 ECD\_D  
 ClientSampleId :

Integration File signal 1: autoint1.e  
 Integration File signal 2: autoint2.e  
 Quant Time: Sep 22 23:55:51 2022  
 Quant Method : Z:\pestpcbsrv\HPCHEM1\ECD\_D\Method\PD082622CLP.M  
 Quant Title : GC Extractables  
 QLast Update : Sat Aug 27 07:11:22 2022  
 Response via : Initial Calibration  
 Integrator: ChemStation

Volume Inj. : 1 µl  
 Signal #1 Phase : ZB-MR2 Signal #2 Phase: ZB-MR1  
 Signal #1 Info : 30M x 0.32mm x0.2 Signal #2 Info : 30M x 0.32mm x 0.50µm

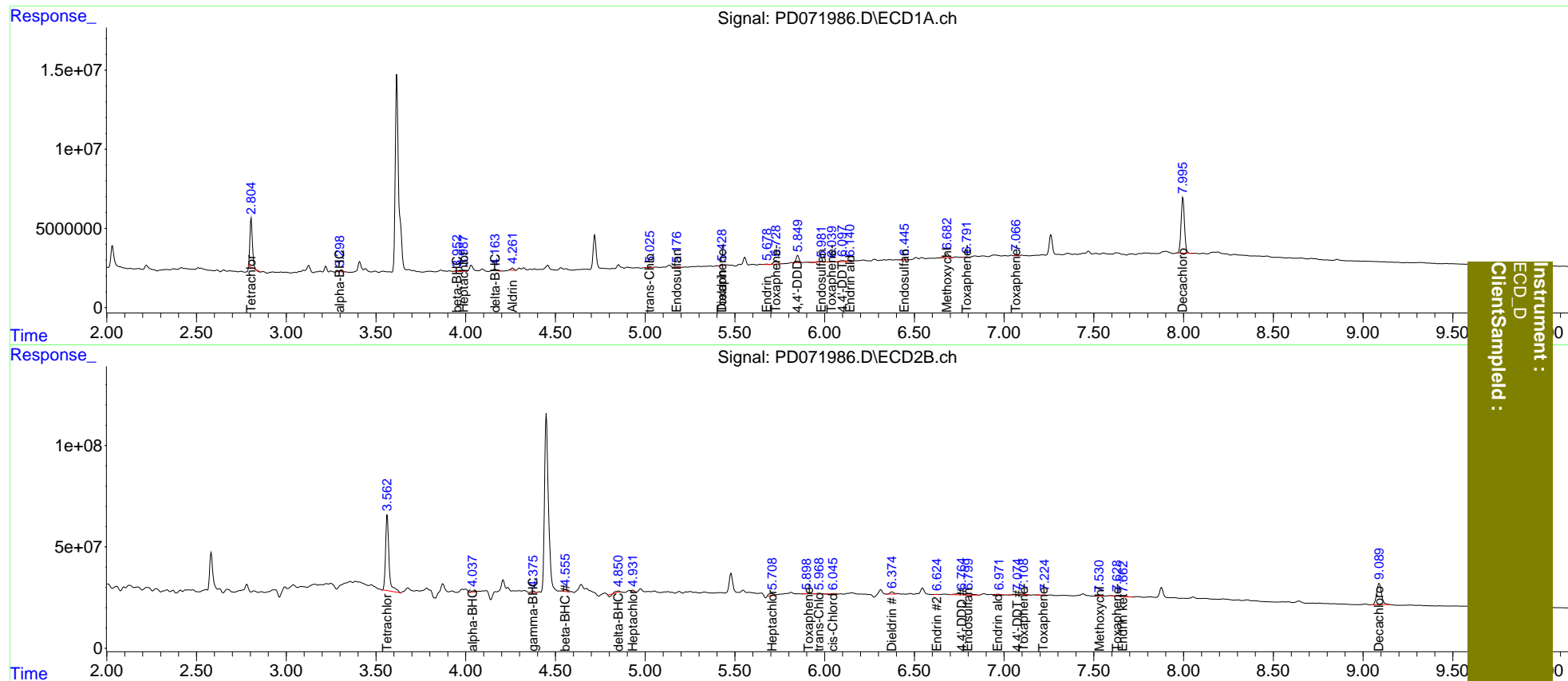
Compound	RT#1	RT#2	Resp#1	Resp#2	ng/ml	ng/ml
System Monitoring Compounds						
1) SA Tetrachlo...	2.805	3.563	30299981	494.7E6	11.618	15.097 #
27) SA Decachlor...	7.997	9.090	45695393	196.2E6	17.413	20.521
Target Compounds						
2) A alpha-BHC	3.300	4.039	722797	5949909	0.187	0.135 #
3) MA gamma-BHC...	0.000	4.377	0	8449518	N.D.	0.227
4) MA Heptachlor	3.989	4.932	684021	7861784	0.180	0.291 #
5) MB Aldrin	4.262	5.282	1562748	-1026961	0.439	N.D. #
6) B beta-BHC	3.953	4.556	598033	14485758	0.376	1.012 #
7) B delta-BHC	4.165	4.851f	1328436	2688147	0.380	0.102 #
8) B Heptachlo...	4.819f	5.709	-134895	20601501	N.D.	1.218
9) A Endosulfan I	5.177	6.089	448851	1374256	0.142	<MDL #
10) B trans-Chl...	5.027	5.969	650097	2900751	0.192	0.171
11) B cis-Chlor...	5.101	6.046	274804	2995931	<MDL	0.184 #
12) B 4,4'-DDE	5.296	6.201	214765	87958	<MDL	<MDL #
13) MA Dieldrin	5.430	6.376	369002	15735820	0.107	0.983 #
14) MA Endrin	5.679	6.626	347457	1483559	0.116	0.113
15) B Endosulfa...	5.983	6.801f	678820	15132784	0.255	1.255 #
16) A 4,4'-DDD	5.850	6.765	5167779	19080040	1.963	1.559
17) MA 4,4'-DDT	6.098	7.075	1363607	3845565	0.501	0.319 #
18) B Endrin al...	6.142f	6.967	1324998	3940831	0.573	0.386 #
19) B Endosulfa...	6.446f	7.220	491869	162727	0.185	<MDL #
20) A Methoxychlor	6.683	7.530	3627256	1716386	2.525	0.313 #
21) B Endrin ke...	6.953f	7.663	-137240	3837685	N.D.	0.310
22) Toxaphene-1	5.430f	5.901	369002	380671	21.065	6.412 #
23) Toxaphene-2	5.730	6.313f	3535602	-13046986	192.069	N.D. #
24) Toxaphene-3	6.041	7.110	631386	573454	29.686	3.140 #
25) Toxaphene-4	6.791	7.220	291673	162727	3.324	0.620 #
26) Toxaphene-5	7.068f	7.629	444016	3742651	11.614	25.095 #

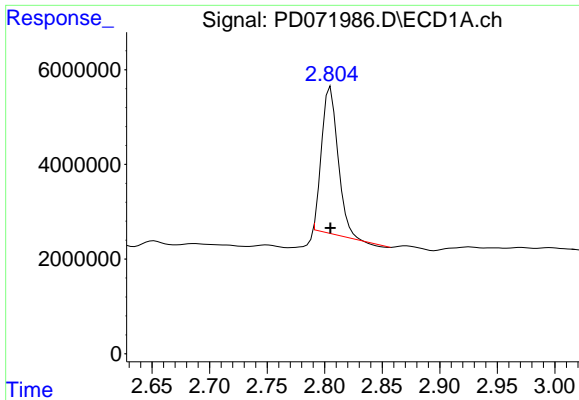
(f)=RT Delta > 1/2 Window (#)=Amounts differ by > 25% (m)=manual int.

Data Path : Z:\pestpcbsrv\HPCHEM1\ECD\_D\Data\PD092322\  
 Data File : PD071986.D  
 Signal(s) : Signal #1: ECD1A.ch Signal #2: ECD2B.ch  
 Acq On : 22 Sep 2022 15:04  
 Operator : AR\AJ  
 Sample : N4706-02  
 Misc :  
 ALS Vial : 7 Sample Multiplier: 1

Integration File signal 1: autoint1.e  
 Integration File signal 2: autoint2.e  
 Quant Time: Sep 22 23:55:51 2022  
 Quant Method : Z:\pestpcbsrv\HPCHEM1\ECD\_D\Method\PD082622CLP.M  
 Quant Title : GC Extractables  
 QLast Update : Sat Aug 27 07:11:22 2022  
 Response via : Initial Calibration  
 Integrator: ChemStation

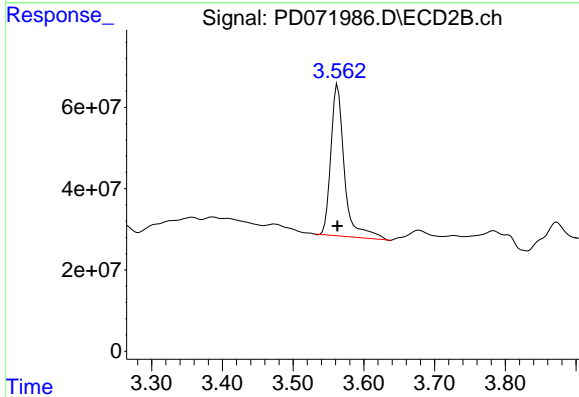
Volume Inj. : 1 µl  
 Signal #1 Phase : ZB-MR2 Signal #2 Phase: ZB-MR1  
 Signal #1 Info : 30M x 0.32mm x0.2 Signal #2 Info : 30M x 0.32mm x 0.50µm



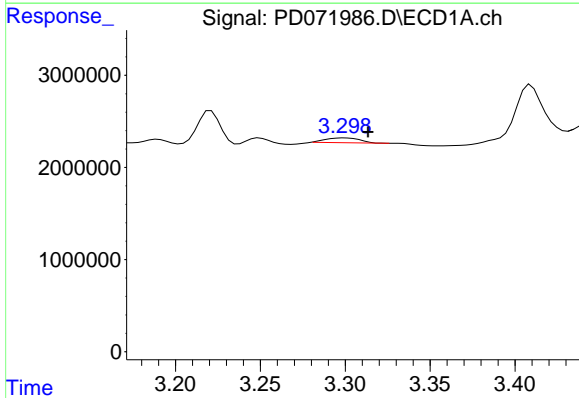


#1 Tetrachloro-m-xylene  
 R.T.: 2.805 min  
 Delta R.T.: 0.000 min  
 Response: 30299981  
 Conc: 11.62 ng/ml

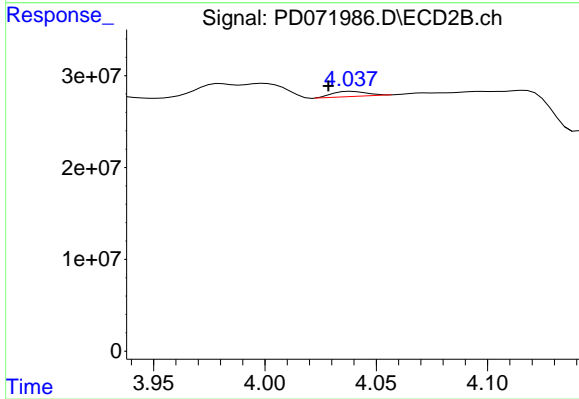
Instrument :  
 ECD\_D  
 ClientSampleId :



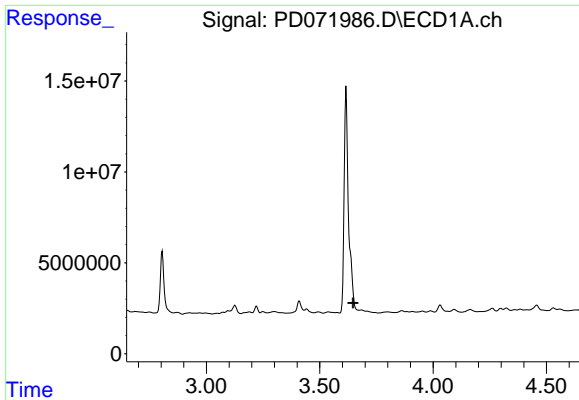
#1 Tetrachloro-m-xylene  
 R.T.: 3.563 min  
 Delta R.T.: 0.000 min  
 Response: 494675821  
 Conc: 15.10 ng/ml



#2 alpha-BHC  
 R.T.: 3.300 min  
 Delta R.T.: -0.014 min  
 Response: 722797  
 Conc: 0.19 ng/ml



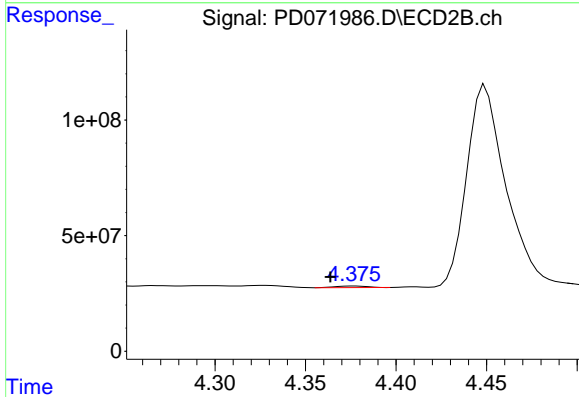
#2 alpha-BHC  
 R.T.: 4.039 min  
 Delta R.T.: 0.010 min  
 Response: 5949909  
 Conc: 0.13 ng/ml



#3 gamma-BHC (Lindane)

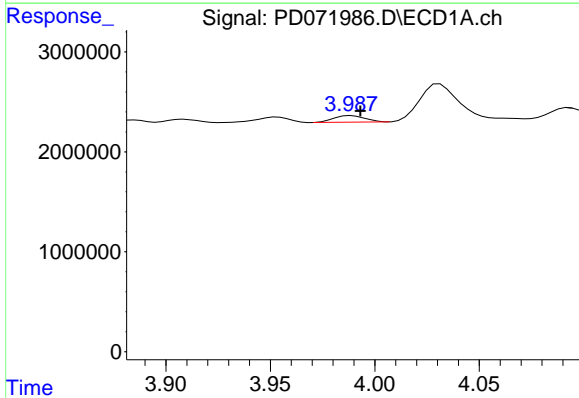
R.T.: 0.000 min  
 Exp R.T.: 3.647 min  
 Response: 0  
 Conc: N.D.

Instrument :  
 ECD\_D  
 ClientSampleId :



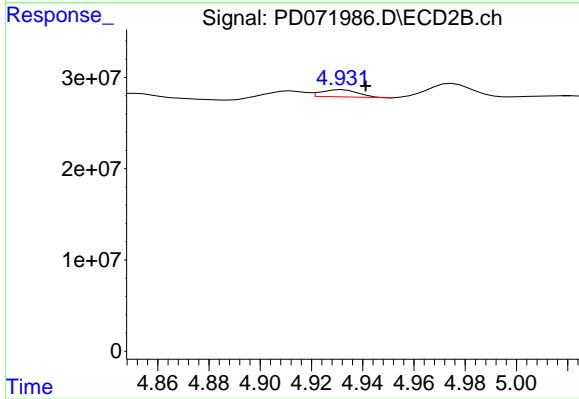
#3 gamma-BHC (Lindane)

R.T.: 4.377 min  
 Delta R.T.: 0.013 min  
 Response: 8449518  
 Conc: 0.23 ng/ml



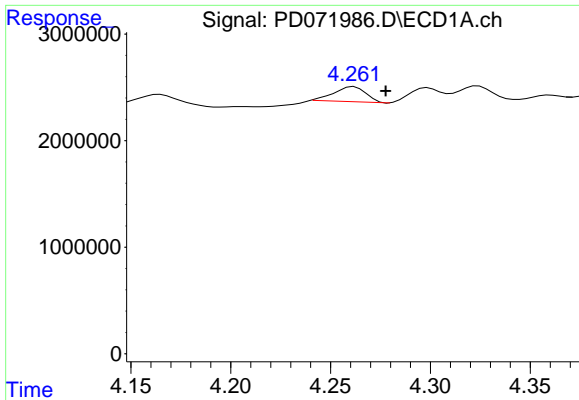
#4 Heptachlor

R.T.: 3.989 min  
 Delta R.T.: -0.004 min  
 Response: 684021  
 Conc: 0.18 ng/ml



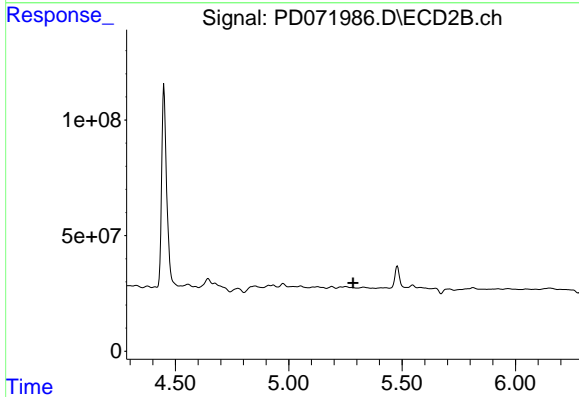
#4 Heptachlor

R.T.: 4.932 min  
 Delta R.T.: -0.009 min  
 Response: 7861784  
 Conc: 0.29 ng/ml

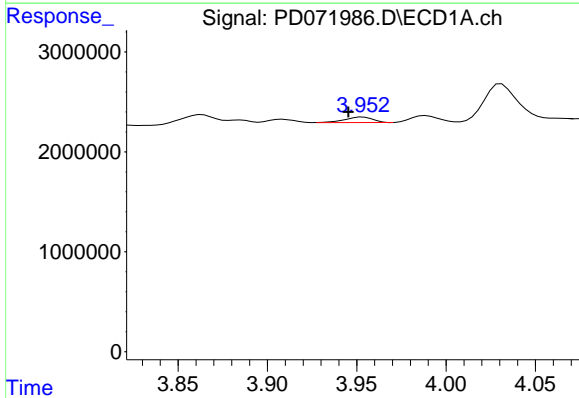


#5 Aldrin  
 R.T.: 4.262 min  
 Delta R.T.: -0.016 min  
 Response: 1562748  
 Conc: 0.44 ng/ml

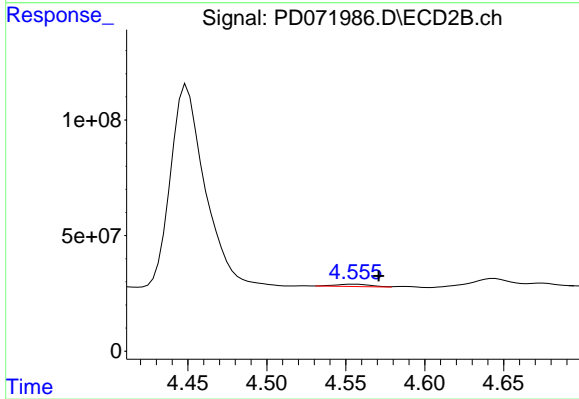
Instrument :  
 ECD\_D  
 ClientSampleId :



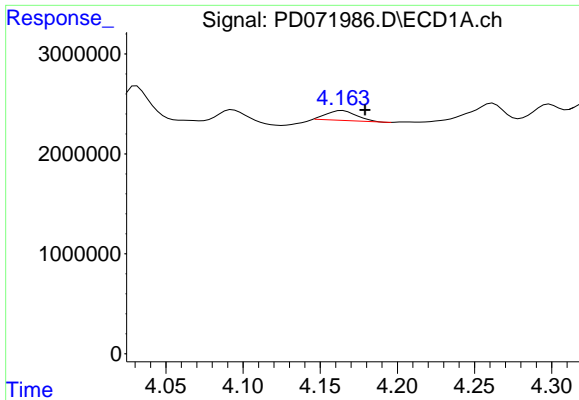
#5 Aldrin  
 R.T.: 5.282 min  
 Delta R.T.: -0.002 min  
 Response: -1026961  
 Conc: N.D.



#6 beta-BHC  
 R.T.: 3.953 min  
 Delta R.T.: 0.008 min  
 Response: 598033  
 Conc: 0.38 ng/ml



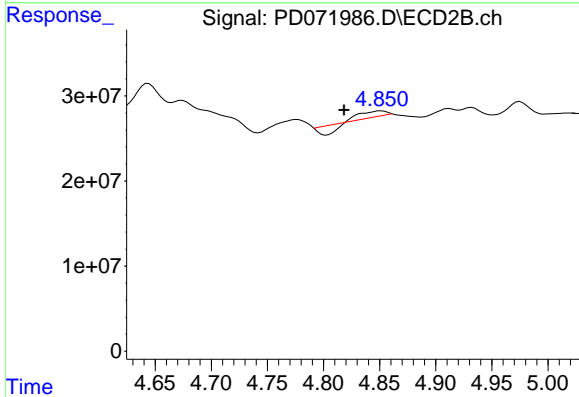
#6 beta-BHC  
 R.T.: 4.556 min  
 Delta R.T.: -0.015 min  
 Response: 14485758  
 Conc: 1.01 ng/ml



#7 delta-BHC

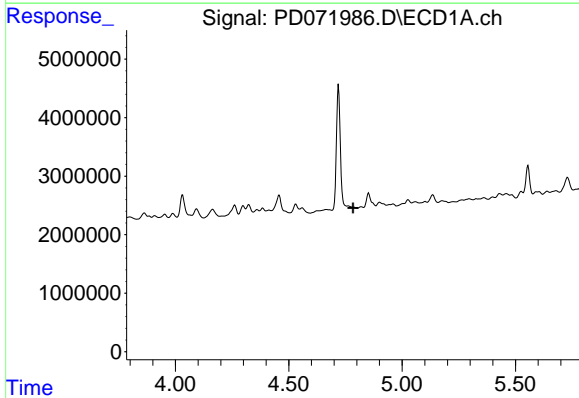
R.T.: 4.165 min  
 Delta R.T.: -0.015 min  
 Response: 1328436  
 Conc: 0.38 ng/ml

Instrument :  
 ECD\_D  
 ClientSampleId :



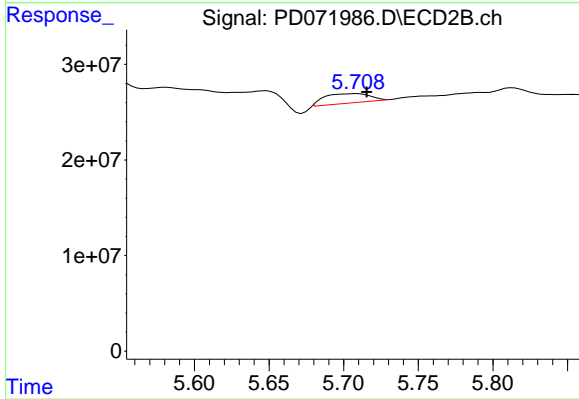
#7 delta-BHC

R.T.: 4.851 min  
 Delta R.T.: 0.033 min  
 Response: 2688147  
 Conc: 0.10 ng/ml



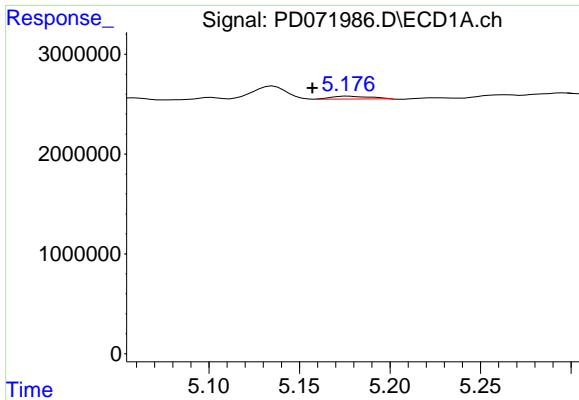
#8 Heptachlor epoxide

R.T.: 4.819 min  
 Delta R.T.: 0.036 min  
 Response: -134895  
 Conc: N.D.



#8 Heptachlor epoxide

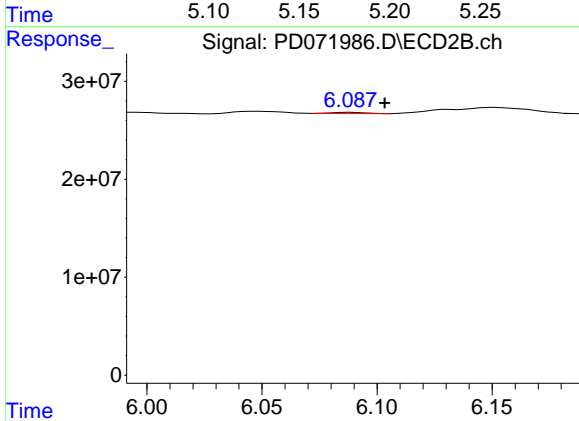
R.T.: 5.709 min  
 Delta R.T.: -0.006 min  
 Response: 20601501  
 Conc: 1.22 ng/ml



#9 Endosulfan I

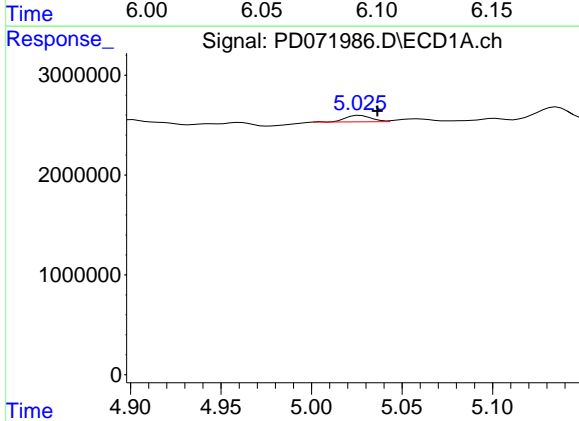
R.T.: 5.177 min  
 Delta R.T.: 0.020 min  
 Response: 448851  
 Conc: 0.14 ng/ml

Instrument :  
 ECD\_D  
 ClientSampleId :



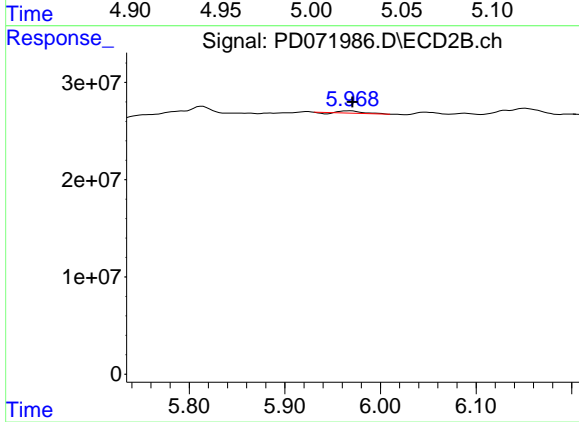
#9 Endosulfan I

R.T.: 6.089 min  
 Delta R.T.: -0.015 min  
 Response: 1374256  
 Conc: N.D.



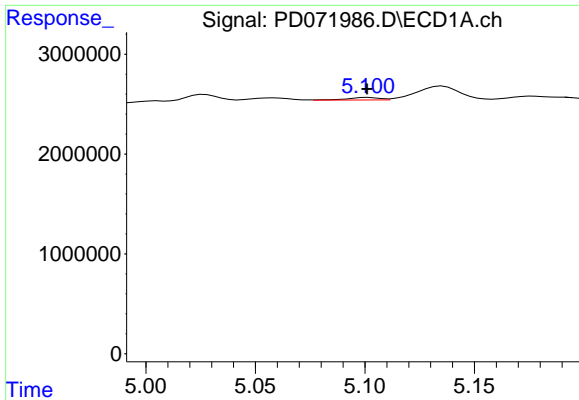
#10 trans-Chlordane

R.T.: 5.027 min  
 Delta R.T.: -0.010 min  
 Response: 650097  
 Conc: 0.19 ng/ml



#10 trans-Chlordane

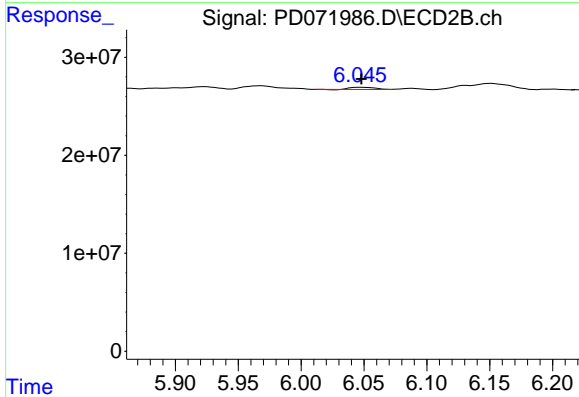
R.T.: 5.969 min  
 Delta R.T.: -0.002 min  
 Response: 2900751  
 Conc: 0.17 ng/ml



#11 cis-Chlordane

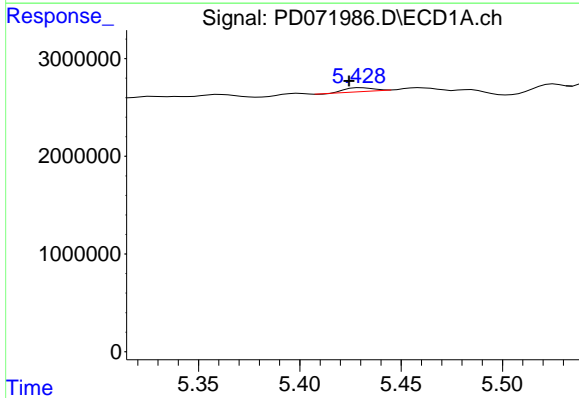
R.T.: 5.101 min  
 Delta R.T.: 0.000 min  
 Response: 274804  
 Conc: N.D.

Instrument :  
 ECD\_D  
 ClientSampleId :



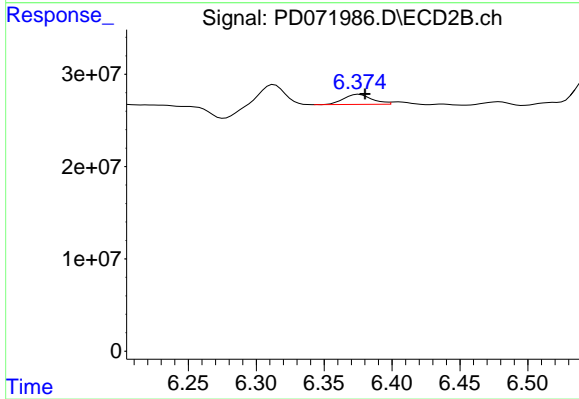
#11 cis-Chlordane

R.T.: 6.046 min  
 Delta R.T.: -0.002 min  
 Response: 2995931  
 Conc: 0.18 ng/ml



#13 Dieldrin

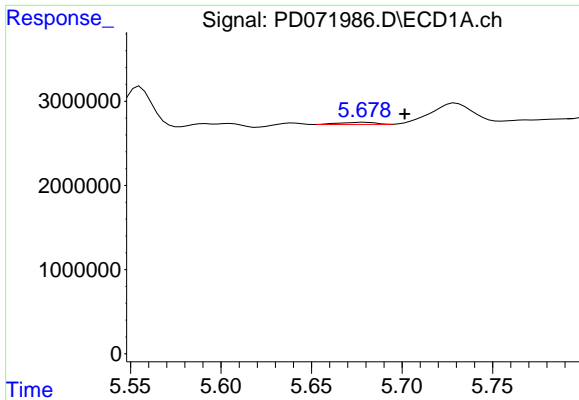
R.T.: 5.430 min  
 Delta R.T.: 0.006 min  
 Response: 369002  
 Conc: 0.11 ng/ml



#13 Dieldrin

R.T.: 6.376 min  
 Delta R.T.: -0.005 min  
 Response: 15735820  
 Conc: 0.98 ng/ml

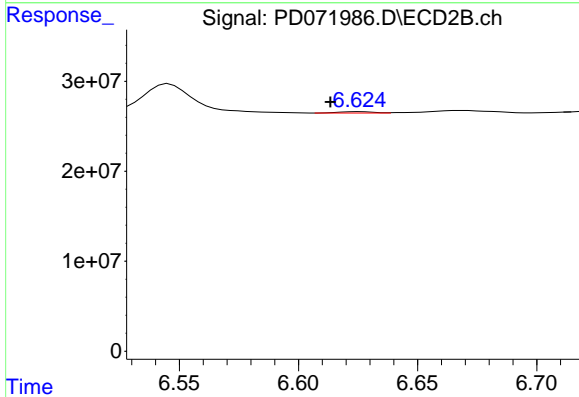




#14 Endrin

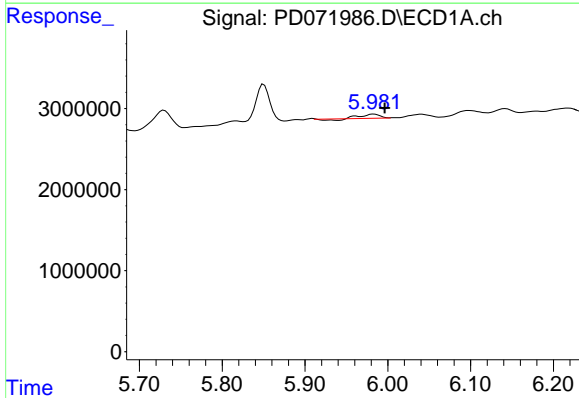
R.T.: 5.679 min  
 Delta R.T.: -0.022 min  
 Response: 347457  
 Conc: 0.12 ng/ml

Instrument :  
 ECD\_D  
 ClientSampleId :



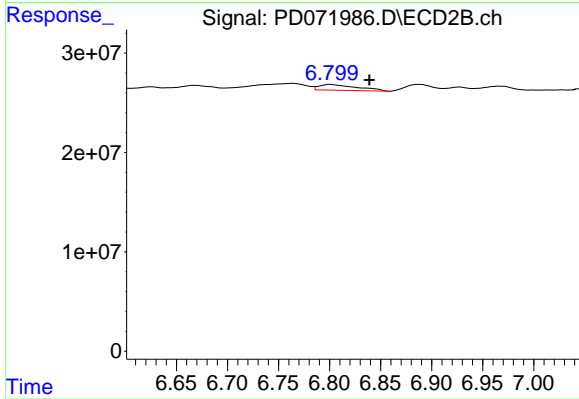
#14 Endrin

R.T.: 6.626 min  
 Delta R.T.: 0.013 min  
 Response: 1483559  
 Conc: 0.11 ng/ml



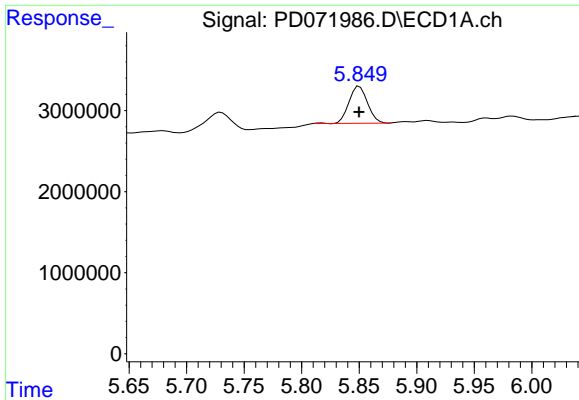
#15 Endosulfan II

R.T.: 5.983 min  
 Delta R.T.: -0.013 min  
 Response: 678820  
 Conc: 0.26 ng/ml



#15 Endosulfan II

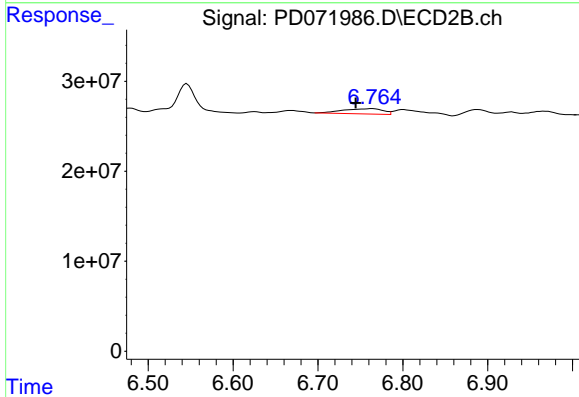
R.T.: 6.801 min  
 Delta R.T.: -0.038 min  
 Response: 15132784  
 Conc: 1.26 ng/ml



#16 4,4'-DDD

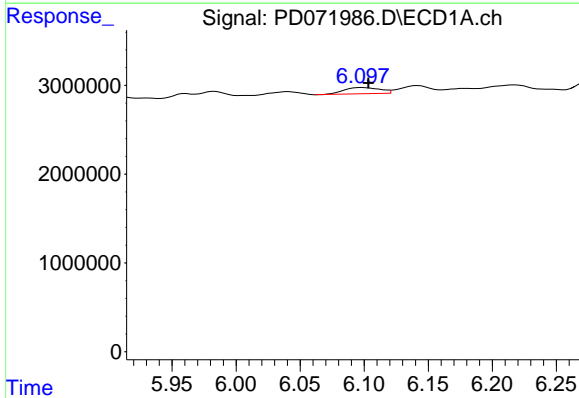
R.T.: 5.850 min  
 Delta R.T.: 0.000 min  
 Response: 5167779  
 Conc: 1.96 ng/ml

Instrument :  
 ECD\_D  
 ClientSampleId :



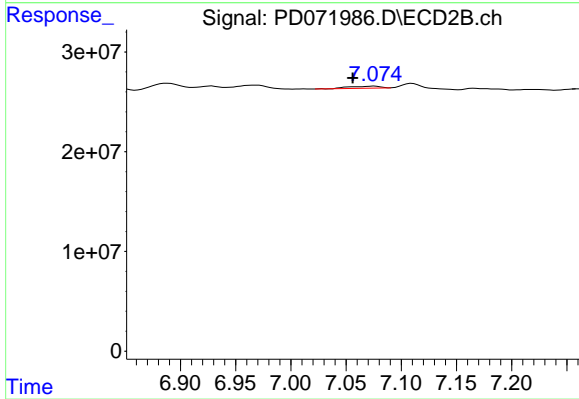
#16 4,4'-DDD

R.T.: 6.765 min  
 Delta R.T.: 0.020 min  
 Response: 19080040  
 Conc: 1.56 ng/ml



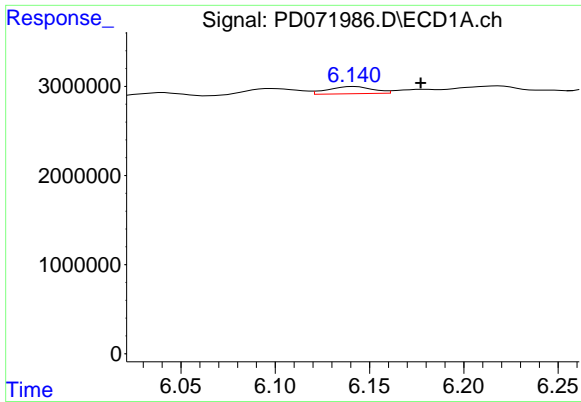
#17 4,4'-DDT

R.T.: 6.098 min  
 Delta R.T.: -0.005 min  
 Response: 1363607  
 Conc: 0.50 ng/ml



#17 4,4'-DDT

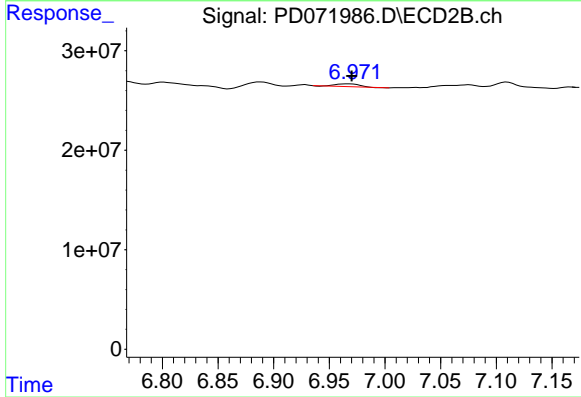
R.T.: 7.075 min  
 Delta R.T.: 0.019 min  
 Response: 3845565  
 Conc: 0.32 ng/ml



#18 Endrin aldehyde

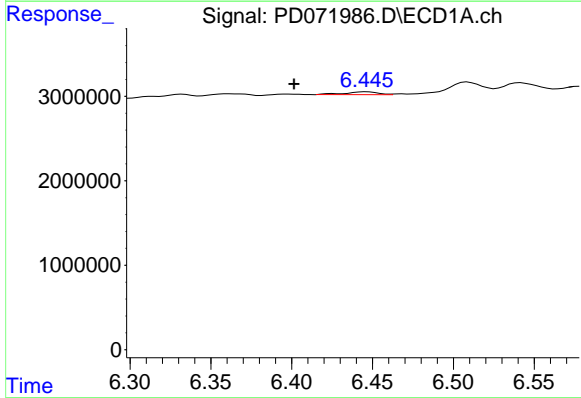
R.T.: 6.142 min  
 Delta R.T.: -0.035 min  
 Response: 1324998  
 Conc: 0.57 ng/ml

Instrument :  
 ECD\_D  
 ClientSampleId :



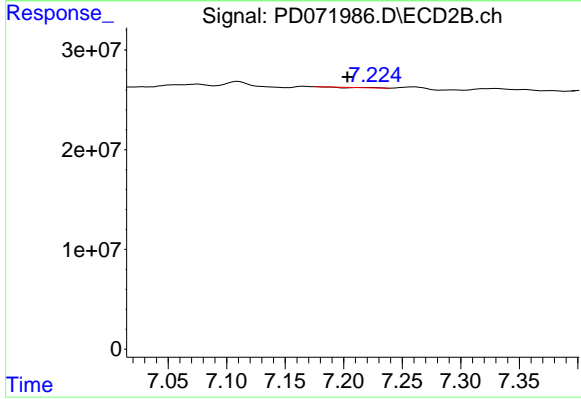
#18 Endrin aldehyde

R.T.: 6.967 min  
 Delta R.T.: -0.003 min  
 Response: 3940831  
 Conc: 0.39 ng/ml



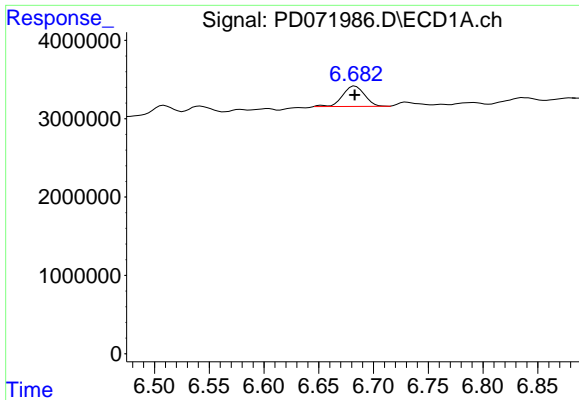
#19 Endosulfan Sulfate

R.T.: 6.446 min  
 Delta R.T.: 0.045 min  
 Response: 491869  
 Conc: 0.18 ng/ml



#19 Endosulfan Sulfate

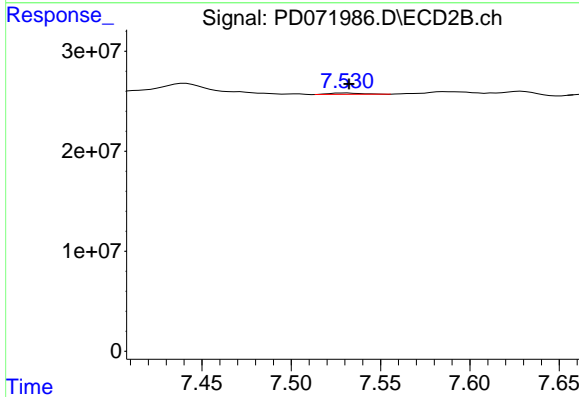
R.T.: 7.220 min  
 Delta R.T.: 0.017 min  
 Response: 162727  
 Conc: N.D.



#20 Methoxychlor

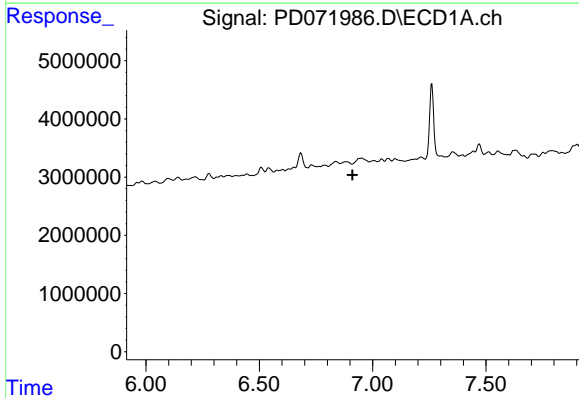
R.T.: 6.683 min  
 Delta R.T.: 0.000 min  
 Response: 3627256  
 Conc: 2.53 ng/ml

Instrument :  
 ECD\_D  
 ClientSampleId :



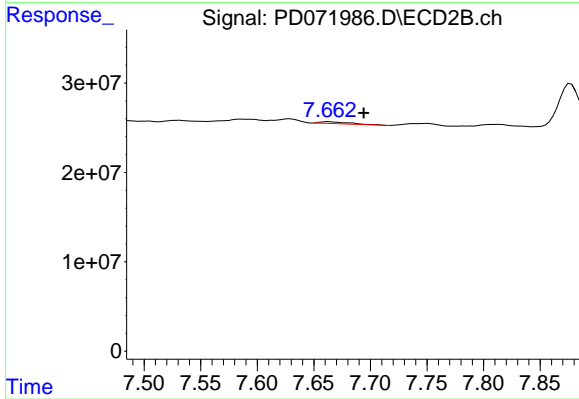
#20 Methoxychlor

R.T.: 7.530 min  
 Delta R.T.: -0.002 min  
 Response: 1716386  
 Conc: 0.31 ng/ml



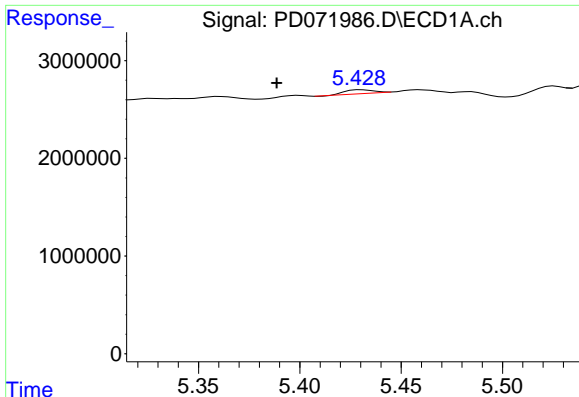
#21 Endrin ketone

R.T.: 6.953 min  
 Delta R.T.: 0.042 min  
 Response: -137240  
 Conc: N.D.



#21 Endrin ketone

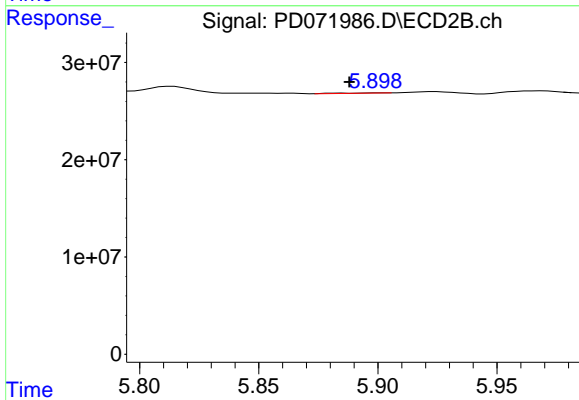
R.T.: 7.663 min  
 Delta R.T.: -0.031 min  
 Response: 3837685  
 Conc: 0.31 ng/ml



#22 Toxaphene-1

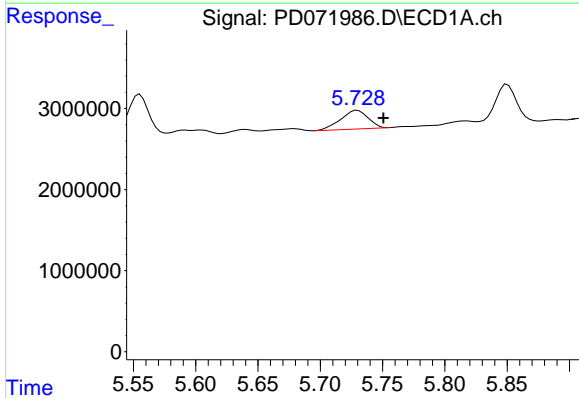
R.T.: 5.430 min  
 Delta R.T.: 0.042 min  
 Response: 369002  
 Conc: 21.07 ng/ml

Instrument :  
 ECD\_D  
 ClientSampleId :



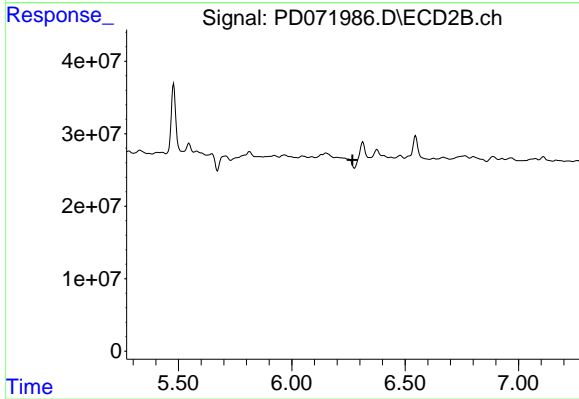
#22 Toxaphene-1

R.T.: 5.901 min  
 Delta R.T.: 0.013 min  
 Response: 380671  
 Conc: 6.41 ng/ml



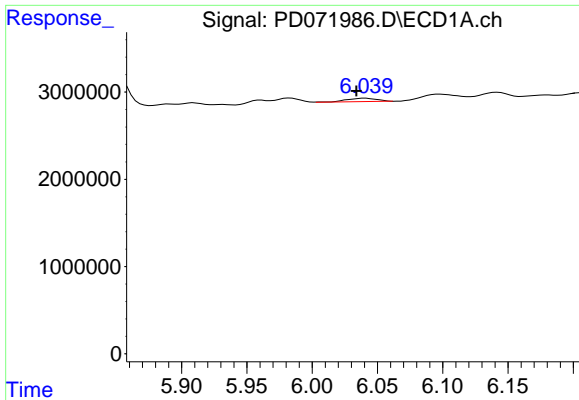
#23 Toxaphene-2

R.T.: 5.730 min  
 Delta R.T.: -0.021 min  
 Response: 3535602  
 Conc: 192.07 ng/ml



#23 Toxaphene-2

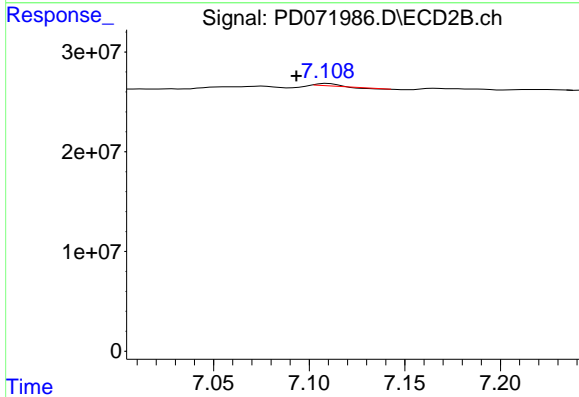
R.T.: 6.313 min  
 Delta R.T.: 0.045 min  
 Response: -13046986  
 Conc: N.D.



#24 Toxaphene-3

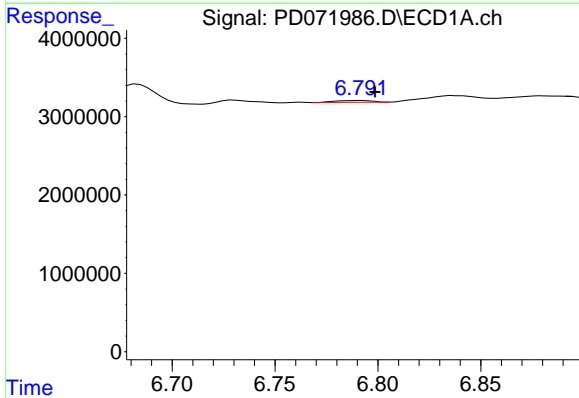
R.T.: 6.041 min  
 Delta R.T.: 0.007 min  
 Response: 631386  
 Conc: 29.69 ng/ml

Instrument :  
 ECD\_D  
 ClientSampleId :



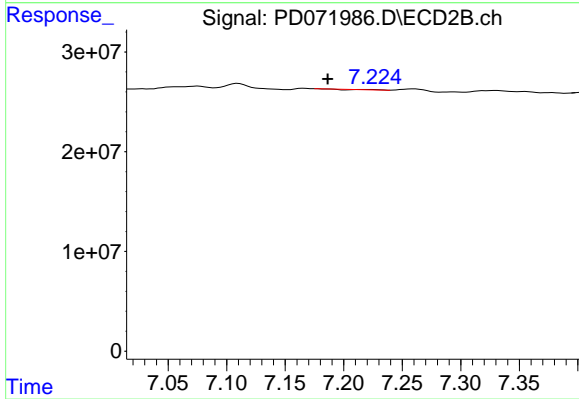
#24 Toxaphene-3

R.T.: 7.110 min  
 Delta R.T.: 0.016 min  
 Response: 573454  
 Conc: 3.14 ng/ml



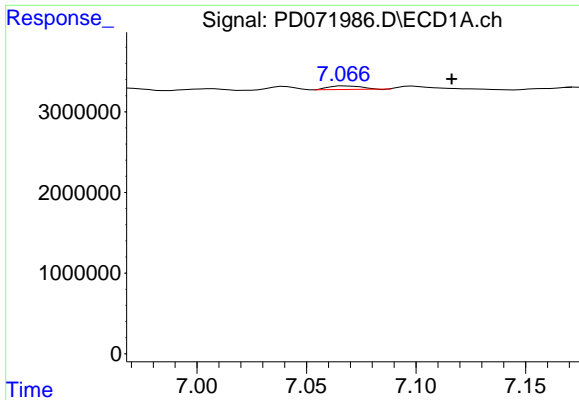
#25 Toxaphene-4

R.T.: 6.791 min  
 Delta R.T.: -0.007 min  
 Response: 291673  
 Conc: 3.32 ng/ml



#25 Toxaphene-4

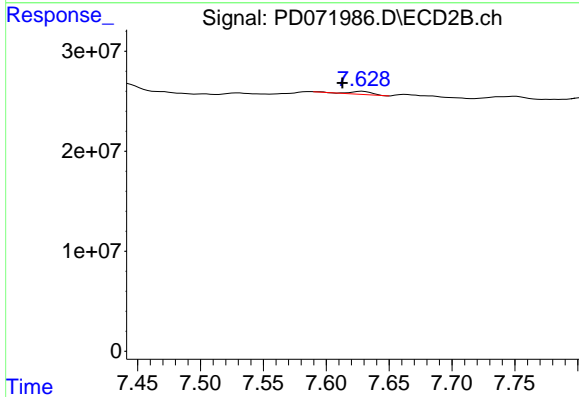
R.T.: 7.220 min  
 Delta R.T.: 0.034 min  
 Response: 162727  
 Conc: 0.62 ng/ml



#26 Toxaphene-5

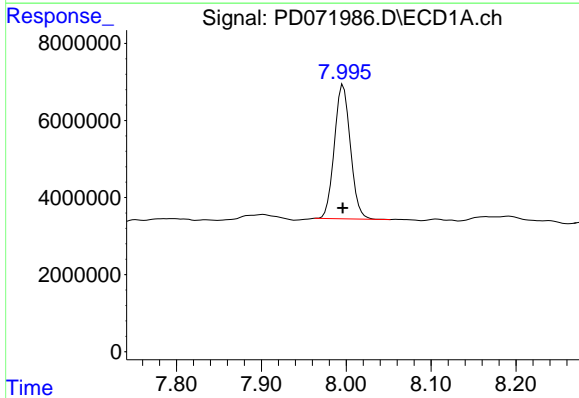
R.T.: 7.068 min  
 Delta R.T.: -0.048 min  
 Response: 444016  
 Conc: 11.61 ng/ml

Instrument :  
 ECD\_D  
 ClientSampleId :



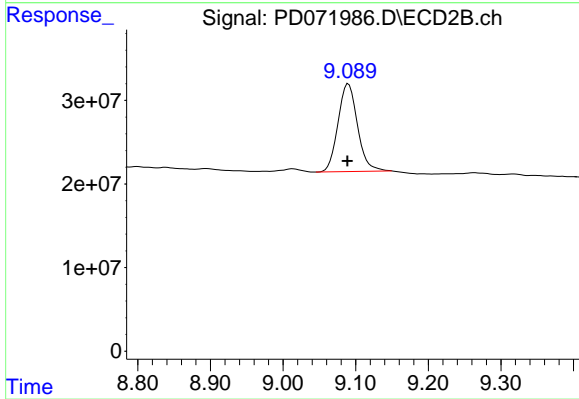
#26 Toxaphene-5

R.T.: 7.629 min  
 Delta R.T.: 0.016 min  
 Response: 3742651  
 Conc: 25.09 ng/ml



#27 Decachlorobiphenyl

R.T.: 7.997 min  
 Delta R.T.: 0.000 min  
 Response: 45695393  
 Conc: 17.41 ng/ml



#27 Decachlorobiphenyl

R.T.: 9.090 min  
 Delta R.T.: 0.001 min  
 Response: 196172677  
 Conc: 20.52 ng/ml