

Data Path : Z:\pestpcbsrv\HPCHEM1\ECD\_D\Data\PD092323\  
 Data File : PD078208.D  
 Signal(s) : Signal #1: ECD1A.ch Signal #2: ECD2B.ch  
 Acq On : 21 Sep 2023 18:50  
 Operator : AR\AJ  
 Sample : 04417-05  
 Misc :  
 ALS Vial : 7 Sample Multiplier: 1

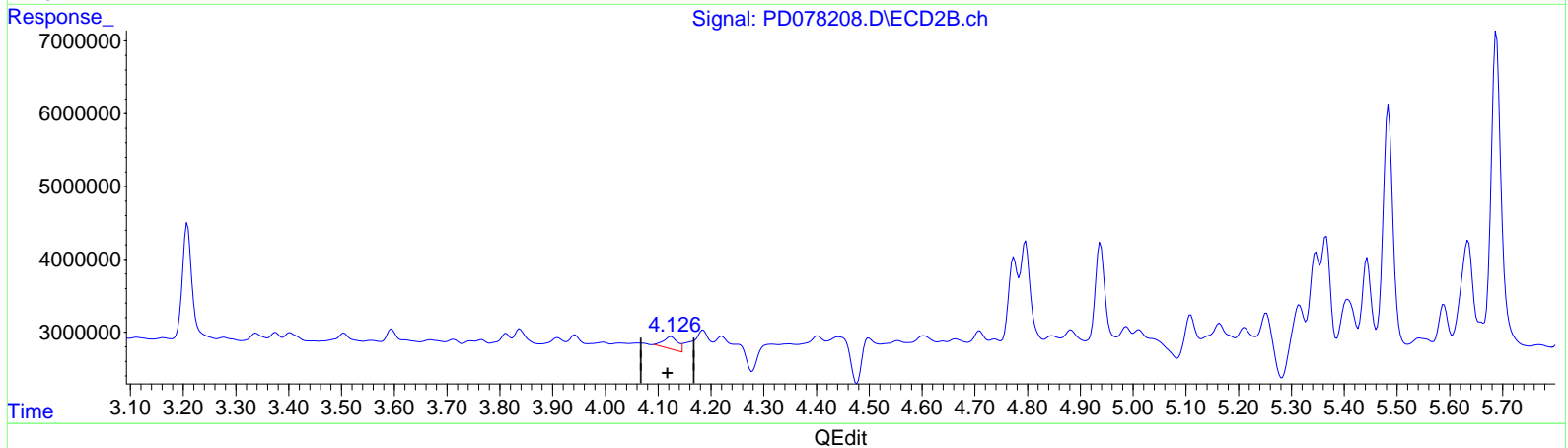
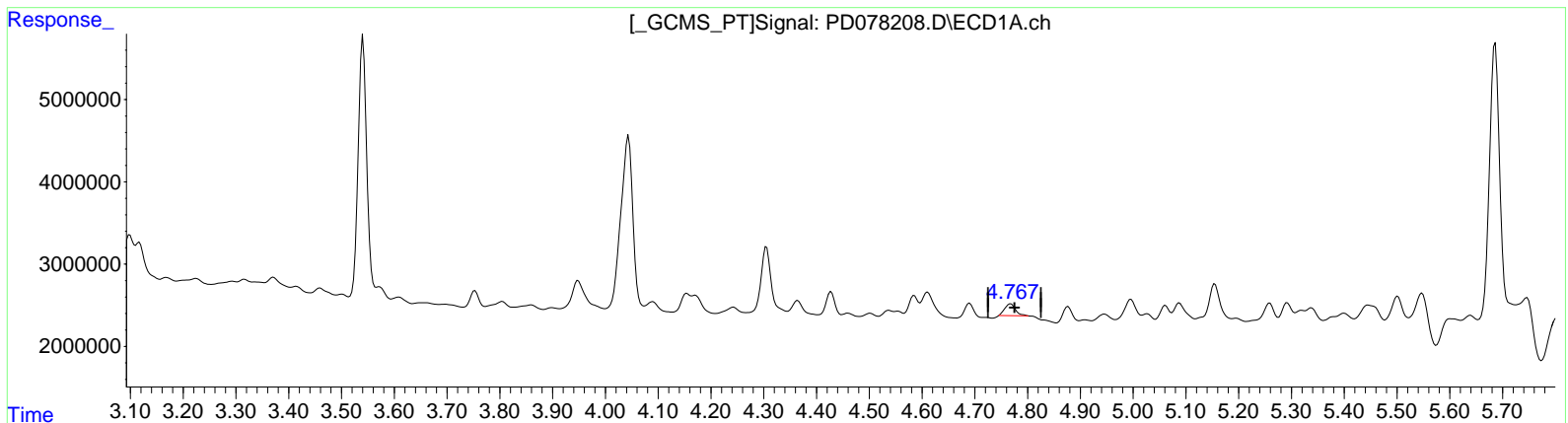
Instrument :  
 ECD\_D  
 ClientSampleId :  
 EZYF4

Manual Integrations APPROVED

Reviewed By : Abdul Mirza 09/22/2023  
 Supervised By : Ankita Jodhani 09/25/2023

Integration File signal 1: autoint1.e  
 Integration File signal 2: autoint2.e  
 Quant Time: Sep 30 02:07:40 2023  
 Quant Method : Z:\pestpcbsrv\HPCHEM1\ECD\_D\Method\PD090623CLP.M  
 Quant Title : GC Extractables  
 QLast Update : Wed Sep 06 16:40:06 2023  
 Response via : Initial Calibration  
 Integrator: ChemStation

Volume Inj. : 1 µl  
 Signal #1 Phase : ZB-MR1 Signal #2 Phase: ZB-MR2  
 Signal #1 Info : 30M x 0.32mm x 0.5 Signal #2 Info : 30M x 0.32mm x 0.25µm



(7) delta-BHC (B)  
 4.768min 0.504 ng/ml  
 response 2023722

(7) delta-BHC #2 (B)  
 4.124min 1.463 ng/ml  
 response 3260586

Data Path : Z:\pestpcbsrv\HPCHEM1\ECD\_D\Data\PD092323\  
 Data File : PD078208.D  
 Signal(s) : Signal #1: ECD1A.ch Signal #2: ECD2B.ch  
 Acq On : 21 Sep 2023 18:50  
 Operator : AR\AJ  
 Sample : 04417-05  
 Misc :  
 ALS Vial : 7 Sample Multiplier: 1

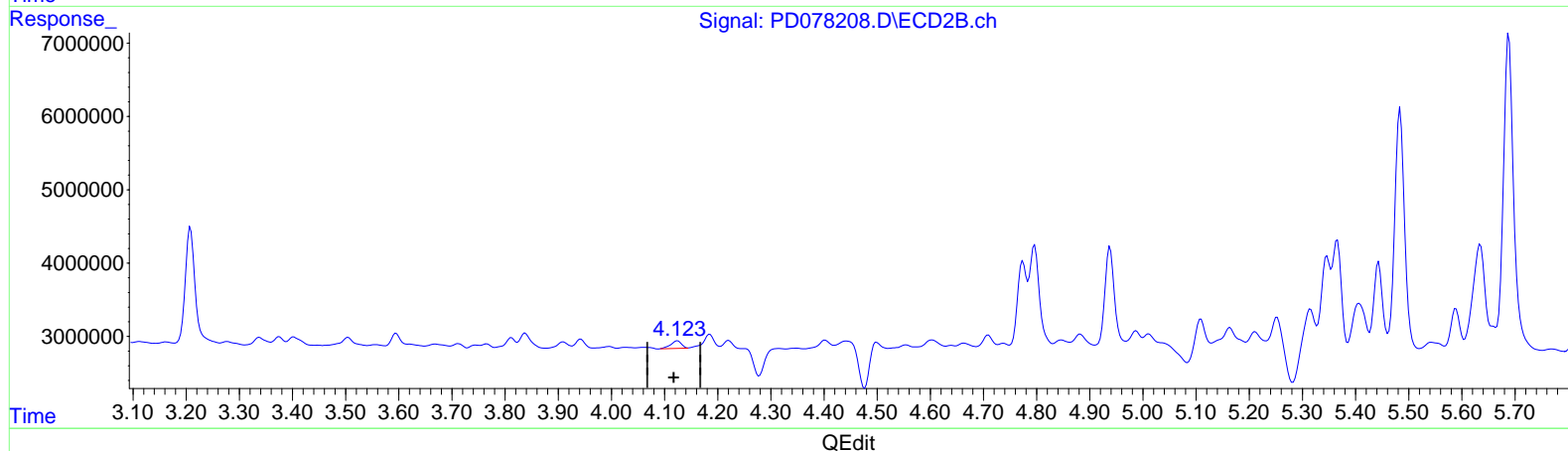
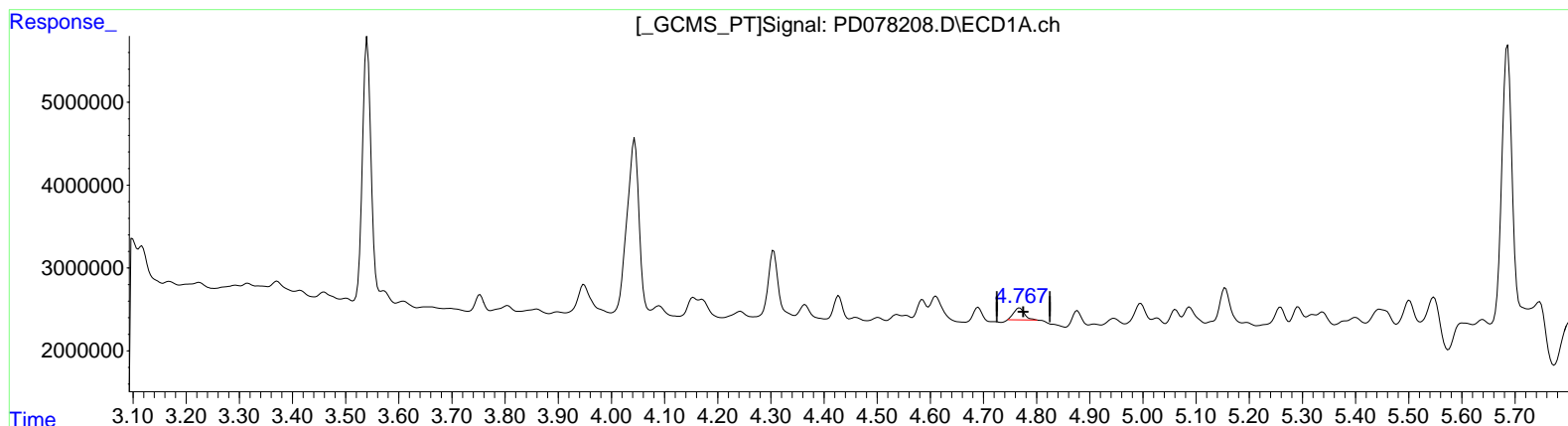
Instrument :  
 ECD\_D  
 ClientSampleId :  
 EZYF4

Manual Integrations APPROVED

Reviewed By : Abdul Mirza 09/22/2023  
 Supervised By : Ankita Jodhani 09/25/2023

Integration File signal 1: autoint1.e  
 Integration File signal 2: autoint2.e  
 Quant Time: Sep 22 00:59:57 2023  
 Quant Method : Z:\pestpcbsrv\HPCHEM1\ECD\_D\Method\PD090623CLP.M  
 Quant Title : GC Extractables  
 QLast Update : Wed Sep 06 16:40:06 2023  
 Response via : Initial Calibration  
 Integrator: ChemStation

Volume Inj. : 1 µl  
 Signal #1 Phase : ZB-MR1 Signal #2 Phase: ZB-MR2  
 Signal #1 Info : 30M x 0.32mm x 0.5 Signal #2 Info : 30M x 0.32mm x 0.25µm



(7) delta-BHC (B)  
 4.768min 0.504 ng/ml  
 response 2023722

(7) delta-BHC #2 (B)  
 4.123min 0.652 ng/ml m  
 response 1454436

Data Path : Z:\pestpcbsrv\HPCHEM1\ECD\_D\Data\PD092323\  
 Data File : PD078208.D  
 Signal(s) : Signal #1: ECD1A.ch Signal #2: ECD2B.ch  
 Acq On : 21 Sep 2023 18:50  
 Operator : AR\AJ  
 Sample : 04417-05  
 Misc :  
 ALS Vial : 7 Sample Multiplier: 1

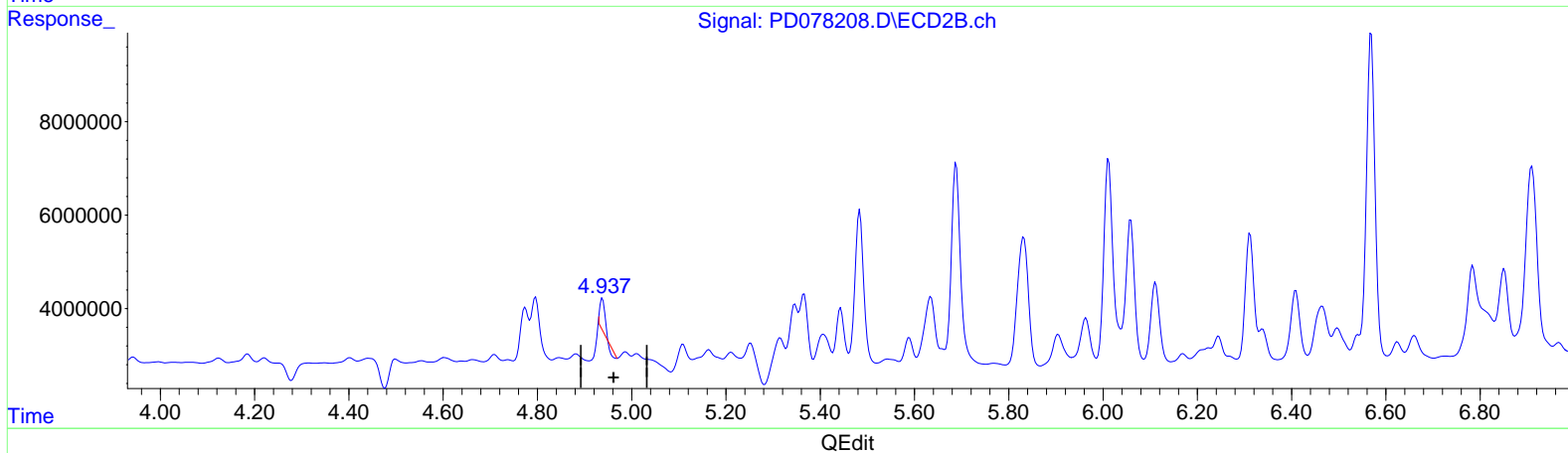
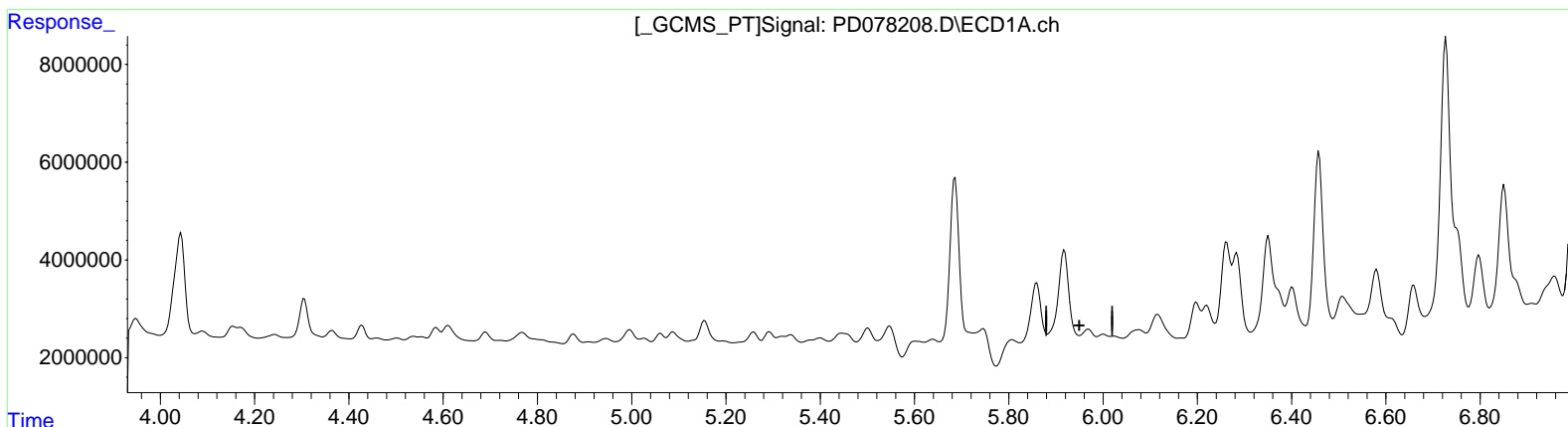
Instrument :  
 ECD\_D  
 ClientSampleId :  
 EZYF4

Manual Integrations APPROVED

Reviewed By : Abdul Mirza 09/22/2023  
 Supervised By : Ankita Jodhani 09/25/2023

Integration File signal 1: autoint1.e  
 Integration File signal 2: autoint2.e  
 Quant Time: Sep 30 02:01:53 2023  
 Quant Method : Z:\pestpcbsrv\HPCHEM1\ECD\_D\Method\PD090623CLP.M  
 Quant Title : GC Extractables  
 QLast Update : Wed Sep 06 16:40:06 2023  
 Response via : Initial Calibration  
 Integrator: ChemStation

Volume Inj. : 1 µl  
 Signal #1 Phase : ZB-MR1 Signal #2 Phase: ZB-MR2  
 Signal #1 Info : 30M x 0.32mm x 0.5 Signal #2 Info : 30M x 0.32mm x 0.25µm



(10) trans-Chlordane (B)  
 5.969min -0.964 ng/ml  
 response -3590787

(10) trans-Chlordane #2 (B)  
 4.938min 2.164 ng/ml  
 response 4321484

Data Path : Z:\pestpcbsrv\HPCHEM1\ECD\_D\Data\PD092323\  
 Data File : PD078208.D  
 Signal(s) : Signal #1: ECD1A.ch Signal #2: ECD2B.ch  
 Acq On : 21 Sep 2023 18:50  
 Operator : AR\AJ  
 Sample : 04417-05  
 Misc :  
 ALS Vial : 7 Sample Multiplier: 1

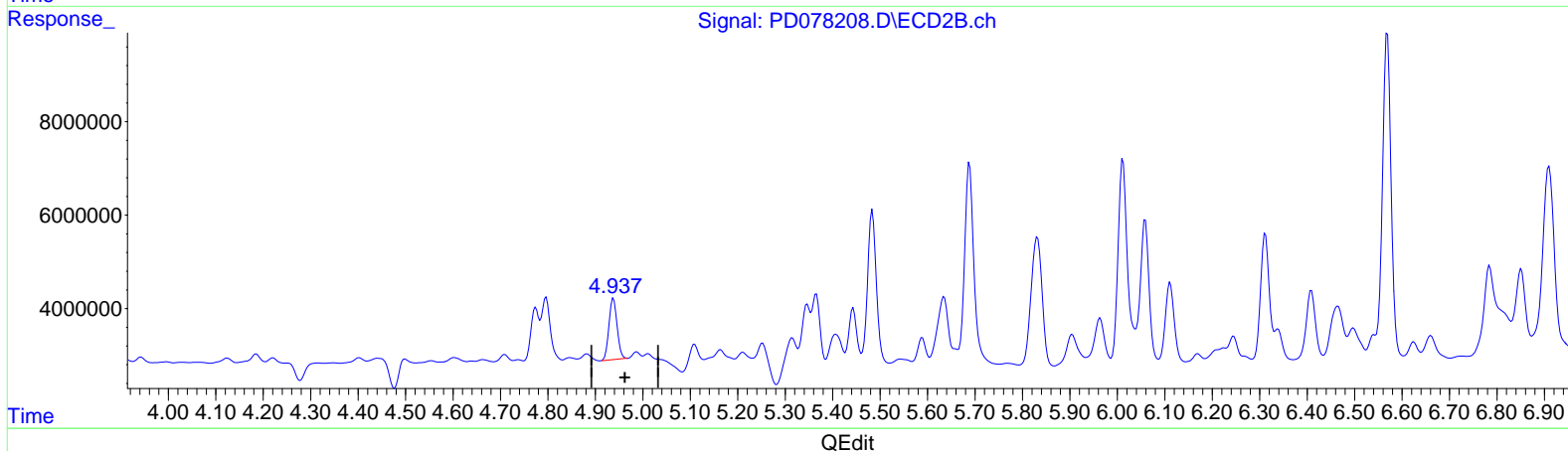
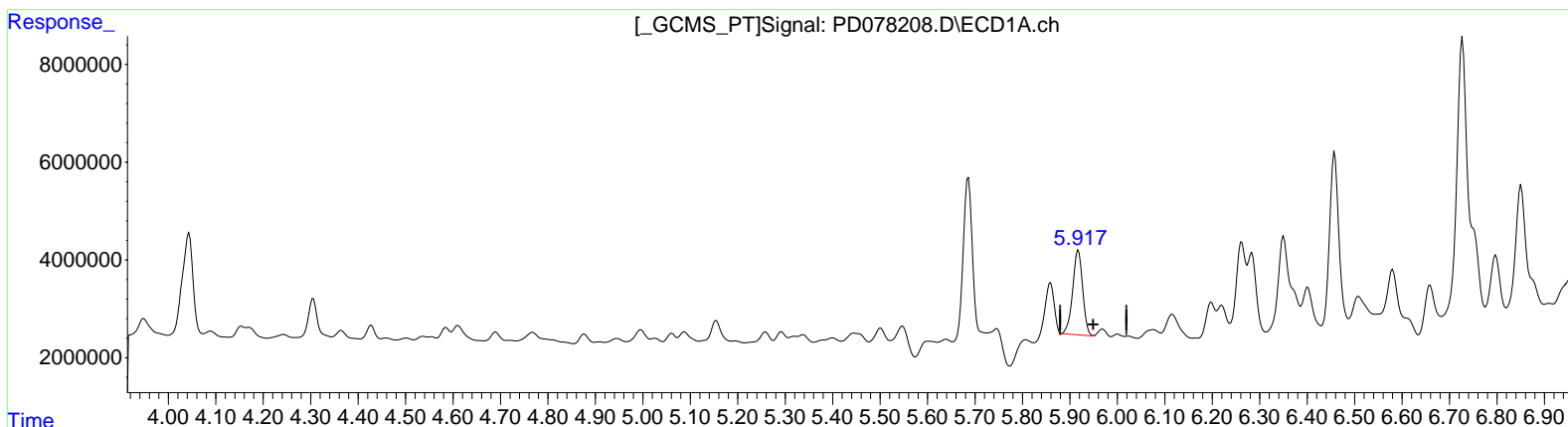
Instrument :  
 ECD\_D  
 ClientSampleId :  
 EZYF4

Manual Integrations APPROVED

Reviewed By : Abdul Mirza 09/22/2023  
 Supervised By : Ankita Jodhani 09/25/2023

Integration File signal 1: autoint1.e  
 Integration File signal 2: autoint2.e  
 Quant Time: Sep 22 00:59:57 2023  
 Quant Method : Z:\pestpcbsrv\HPCHEM1\ECD\_D\Method\PD090623CLP.M  
 Quant Title : GC Extractables  
 QLast Update : Wed Sep 06 16:40:06 2023  
 Response via : Initial Calibration  
 Integrator: ChemStation

Volume Inj. : 1 µl  
 Signal #1 Phase : ZB-MR1 Signal #2 Phase: ZB-MR2  
 Signal #1 Info : 30M x 0.32mm x 0.5 Signal #2 Info : 30M x 0.32mm x 0.25µm



(10) trans-Chlordane (B)  
 5.917min 6.747 ng/ml m  
 response 25122371

(10) trans-Chlordane #2 (B)  
 4.937min 7.797 ng/ml m  
 response 15570984

Data Path : Z:\pestpcbsrv\HPCHEM1\ECD\_D\Data\PD092323\  
 Data File : PD078208.D  
 Signal(s) : Signal #1: ECD1A.ch Signal #2: ECD2B.ch  
 Acq On : 21 Sep 2023 18:50  
 Operator : AR\AJ  
 Sample : 04417-05  
 Misc :  
 ALS Vial : 7 Sample Multiplier: 1

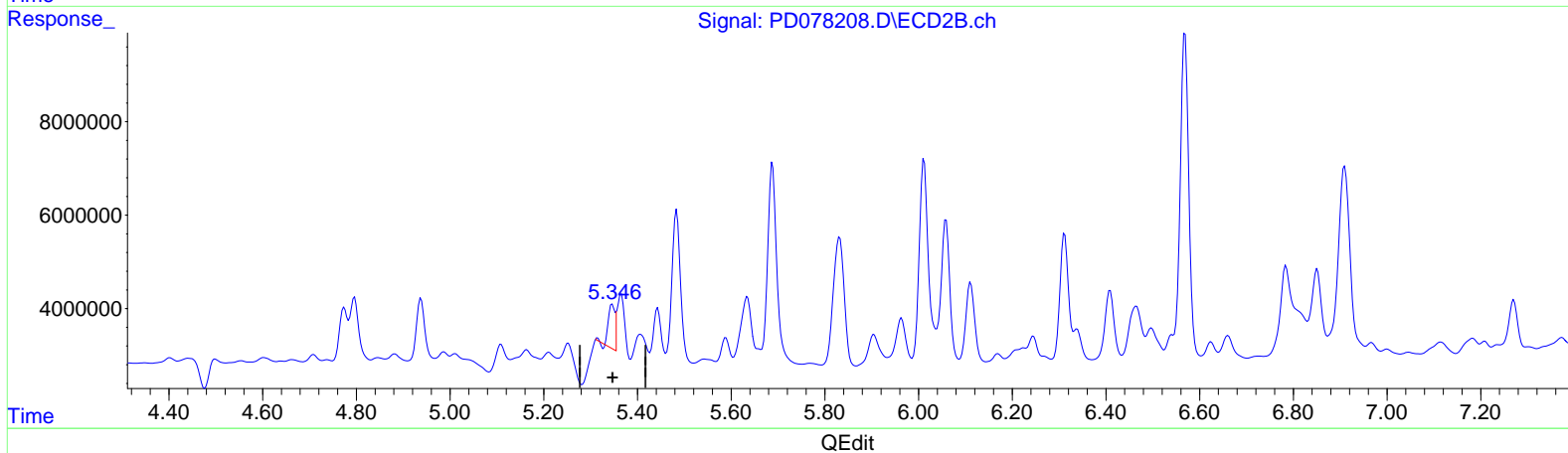
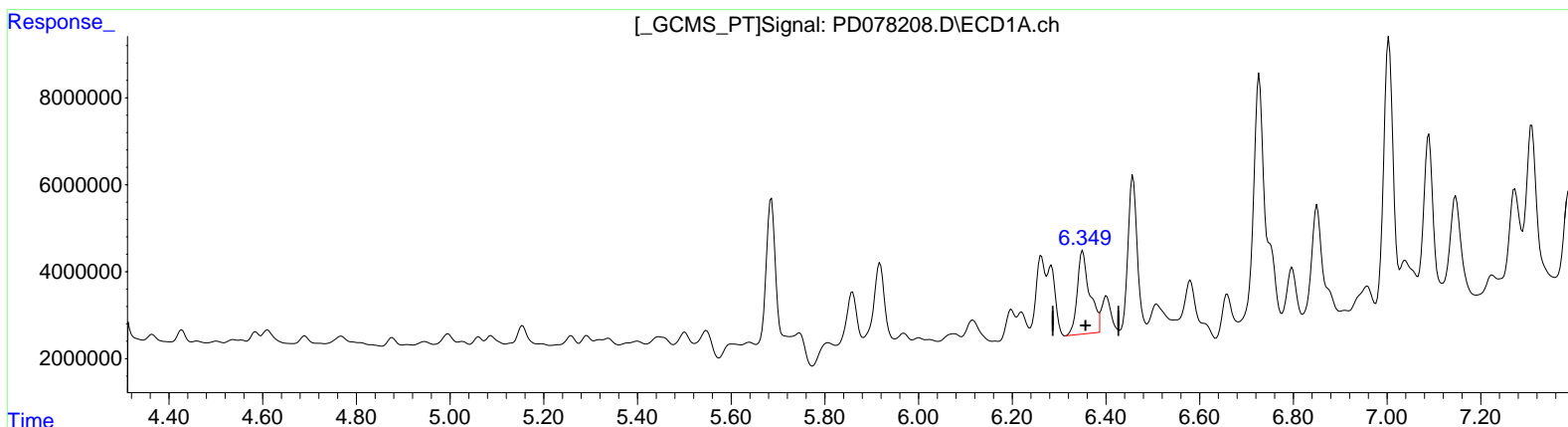
Instrument :  
 ECD\_D  
 ClientSampleId :  
 EZYF4

Manual Integrations APPROVED

Reviewed By : Abdul Mirza 09/22/2023  
 Supervised By : Ankita Jodhani 09/25/2023

Integration File signal 1: autoint1.e  
 Integration File signal 2: autoint2.e  
 Quant Time: Sep 30 02:01:53 2023  
 Quant Method : Z:\pestpcbsrv\HPCHEM1\ECD\_D\Method\PD090623CLP.M  
 Quant Title : GC Extractables  
 QLast Update : Wed Sep 06 16:40:06 2023  
 Response via : Initial Calibration  
 Integrator: ChemStation

Volume Inj. : 1 µl  
 Signal #1 Phase : ZB-MR1 Signal #2 Phase: ZB-MR2  
 Signal #1 Info : 30M x 0.32mm x 0.5 Signal #2 Info : 30M x 0.32mm x 0.25µm



(13) Dieldrin (MA)  
 6.351min 9.417 ng/ml  
 response 35248841

(13) Dieldrin #2 (MA)  
 5.346min 4.276 ng/ml  
 response 8835975

Data Path : Z:\pestpcbsrv\HPCHEM1\ECD\_D\Data\PD092323\  
 Data File : PD078208.D  
 Signal(s) : Signal #1: ECD1A.ch Signal #2: ECD2B.ch  
 Acq On : 21 Sep 2023 18:50  
 Operator : AR\AJ  
 Sample : 04417-05  
 Misc :  
 ALS Vial : 7 Sample Multiplier: 1

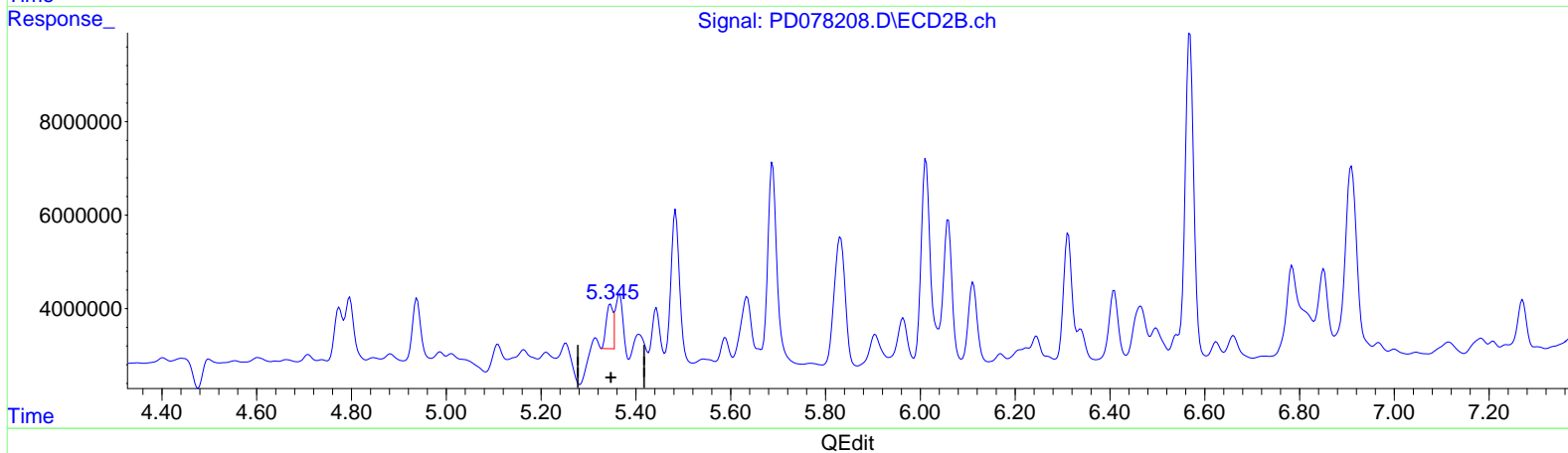
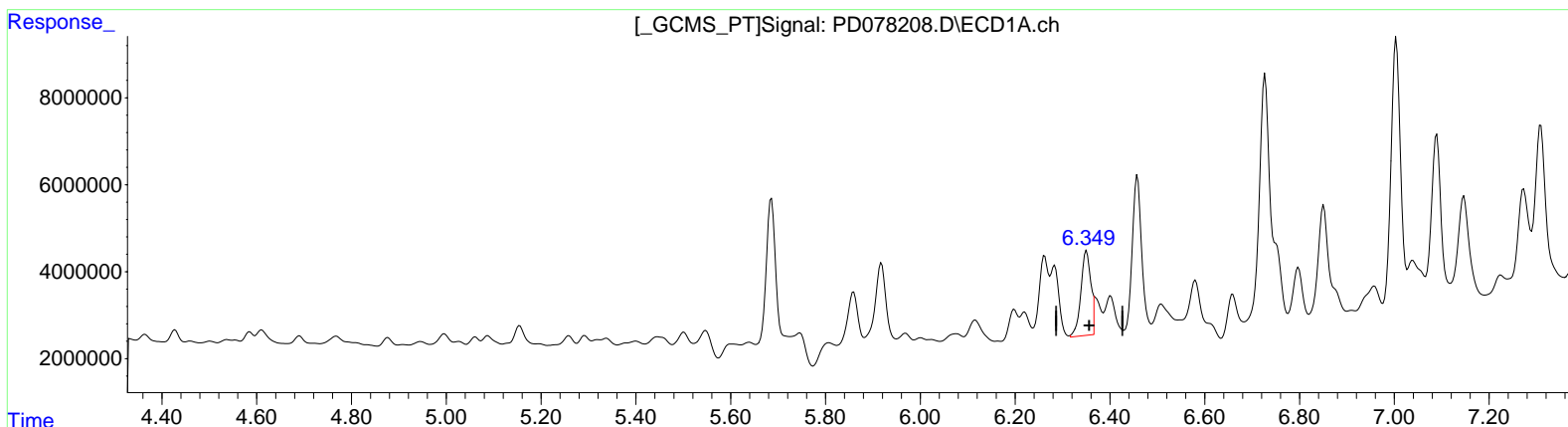
Instrument :  
 ECD\_D  
 ClientSampleId :  
 EZYF4

Manual Integrations APPROVED

Reviewed By : Abdul Mirza 09/22/2023  
 Supervised By : Ankita Jodhani 09/25/2023

Integration File signal 1: autoint1.e  
 Integration File signal 2: autoint2.e  
 Quant Time: Sep 22 00:59:57 2023  
 Quant Method : Z:\pestpcbsrv\HPCHEM1\ECD\_D\Method\PD090623CLP.M  
 Quant Title : GC Extractables  
 QLast Update : Wed Sep 06 16:40:06 2023  
 Response via : Initial Calibration  
 Integrator: ChemStation

Volume Inj. : 1 µl  
 Signal #1 Phase : ZB-MR1 Signal #2 Phase: ZB-MR2  
 Signal #1 Info : 30M x 0.32mm x 0.5 Signal #2 Info : 30M x 0.32mm x 0.25µm



(13) Dieldrin (MA)  
 6.349min 8.001 ng/ml m  
 response 29946554

(13) Dieldrin #2 (MA)  
 5.345min 4.764 ng/ml m  
 response 9844105

Data Path : Z:\pestpcbsrv\HPCHEM1\ECD\_D\Data\PD092323\  
 Data File : PD078208.D  
 Signal(s) : Signal #1: ECD1A.ch Signal #2: ECD2B.ch  
 Acq On : 21 Sep 2023 18:50  
 Operator : AR\AJ  
 Sample : 04417-05  
 Misc :  
 ALS Vial : 7 Sample Multiplier: 1

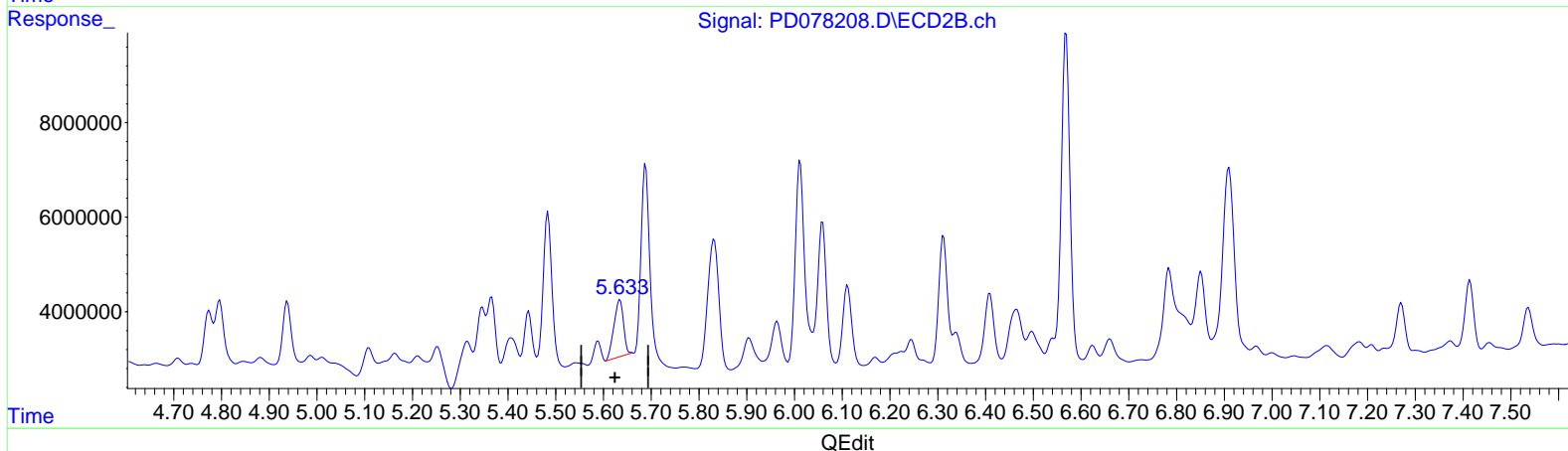
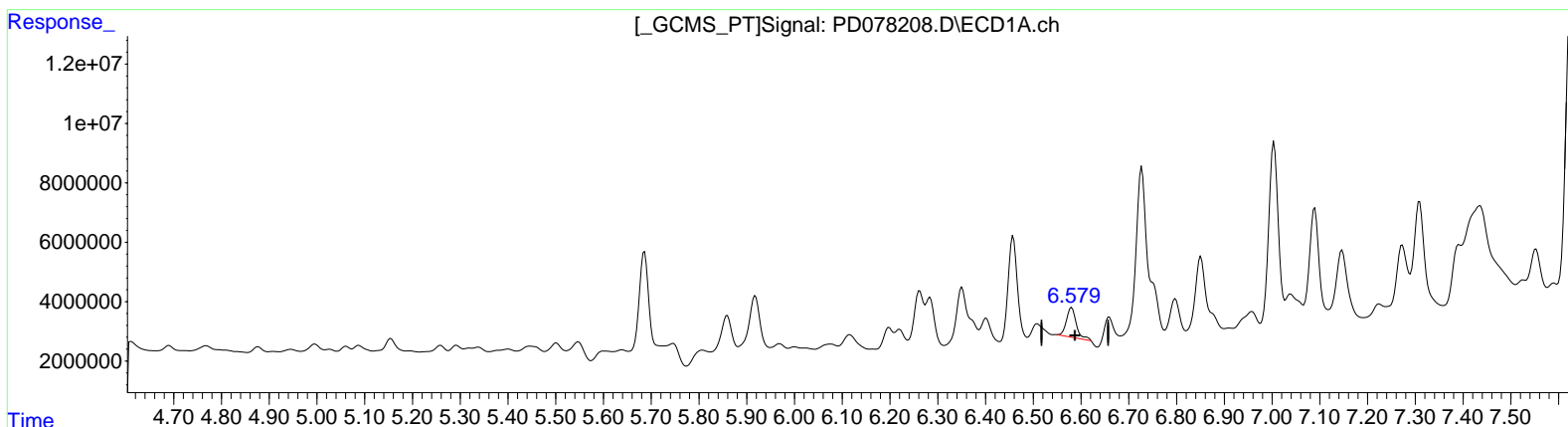
Instrument :  
 ECD\_D  
 ClientSampleId :  
 EZYF4

Manual Integrations APPROVED

Reviewed By : Abdul Mirza 09/22/2023  
 Supervised By : Ankita Jodhani 09/25/2023

Integration File signal 1: autoint1.e  
 Integration File signal 2: autoint2.e  
 Quant Time: Sep 22 00:59:57 2023  
 Quant Method : Z:\pestpcbsrv\HPCHEM1\ECD\_D\Method\PD090623CLP.M  
 Quant Title : GC Extractables  
 QLast Update : Wed Sep 06 16:40:06 2023  
 Response via : Initial Calibration  
 Integrator: ChemStation

Volume Inj. : 1 µl  
 Signal #1 Phase : ZB-MR1 Signal #2 Phase: ZB-MR2  
 Signal #1 Info : 30M x 0.32mm x 0.5 Signal #2 Info : 30M x 0.32mm x 0.25µm



(14) Endrin (MA)  
 6.580min 4.588 ng/ml  
 response 14153966

(14) Endrin #2 (MA)  
 5.633min 9.202 ng/ml m  
 response 16824441

Data Path : Z:\pestpcbsrv\HPCHEM1\ECD\_D\Data\PD092323\  
 Data File : PD078208.D  
 Signal(s) : Signal #1: ECD1A.ch Signal #2: ECD2B.ch  
 Acq On : 21 Sep 2023 18:50  
 Operator : AR\AJ  
 Sample : 04417-05  
 Misc :  
 ALS Vial : 7 Sample Multiplier: 1

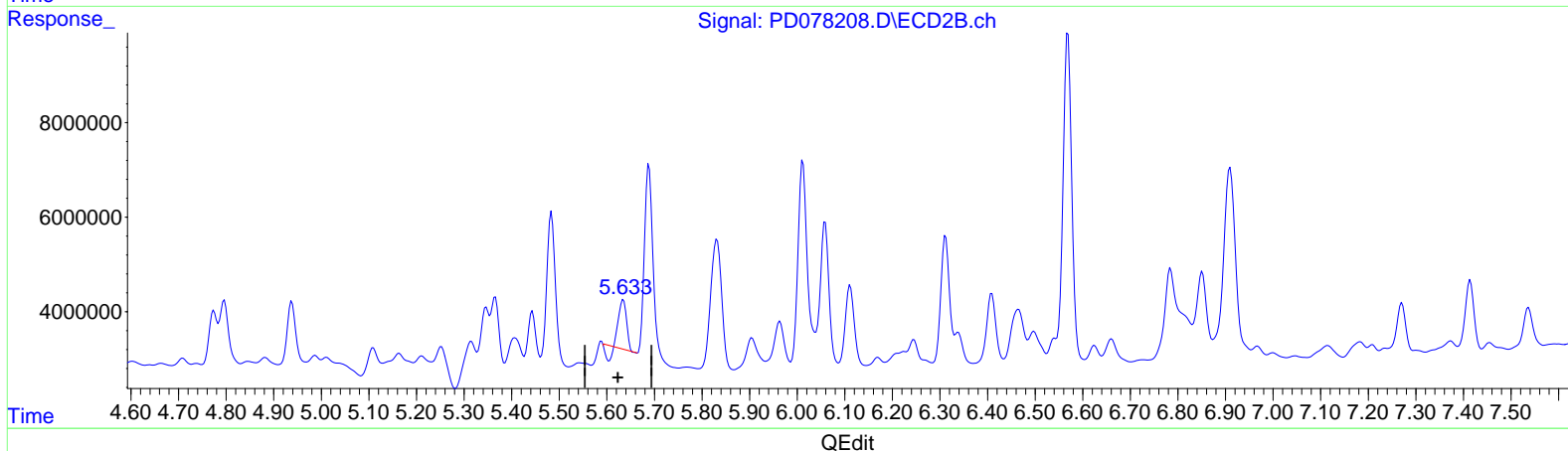
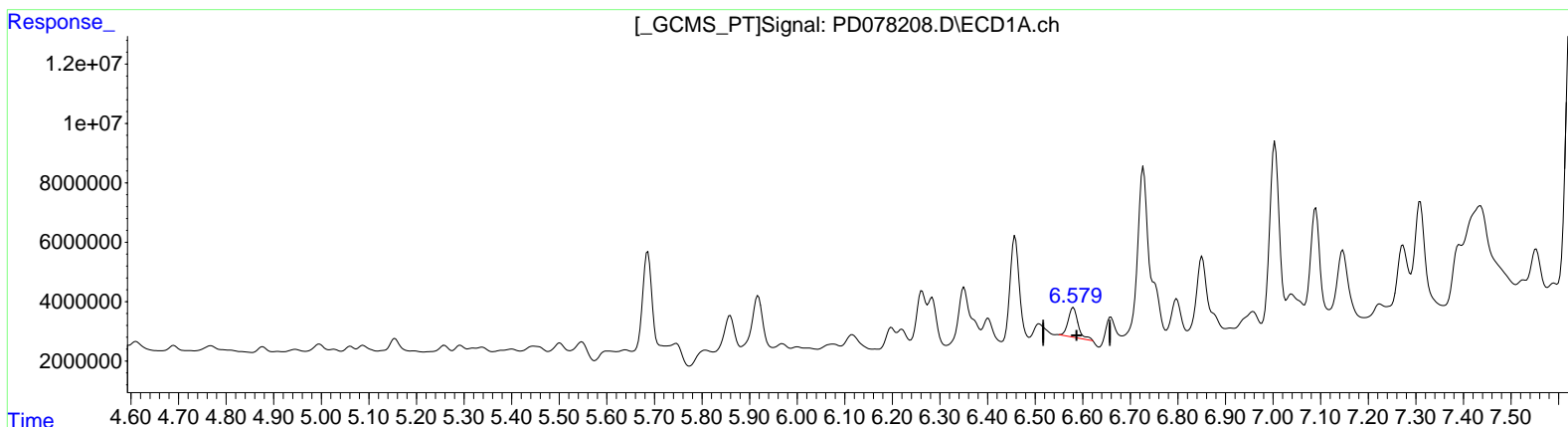
Instrument :  
 ECD\_D  
 ClientSampleId :  
 EZYF4

Manual Integrations APPROVED

Reviewed By : Abdul Mirza 09/22/2023  
 Supervised By : Ankita Jodhani 09/25/2023

Integration File signal 1: autoint1.e  
 Integration File signal 2: autoint2.e  
 Quant Time: Sep 30 02:01:53 2023  
 Quant Method : Z:\pestpcbsrv\HPCHEM1\ECD\_D\Method\PD090623CLP.M  
 Quant Title : GC Extractables  
 QLast Update : Wed Sep 06 16:40:06 2023  
 Response via : Initial Calibration  
 Integrator: ChemStation

Volume Inj. : 1 µl  
 Signal #1 Phase : ZB-MR1 Signal #2 Phase: ZB-MR2  
 Signal #1 Info : 30M x 0.32mm x 0.5 Signal #2 Info : 30M x 0.32mm x 0.25µm



(14) Endrin (MA)  
 6.580min 4.588 ng/ml  
 response 14153966

(14) Endrin #2 (MA)  
 5.635min 5.323 ng/ml  
 response 9732568



Data Path : Z:\pestpcbsrv\HPCHEM1\ECD\_D\Data\PD092323\  
 Data File : PD078208.D  
 Signal(s) : Signal #1: ECD1A.ch Signal #2: ECD2B.ch  
 Acq On : 21 Sep 2023 18:50  
 Operator : AR\AJ  
 Sample : 04417-05  
 Misc :  
 ALS Vial : 7 Sample Multiplier: 1

**Instrument :**

ECD\_D

**ClientSampleId :**

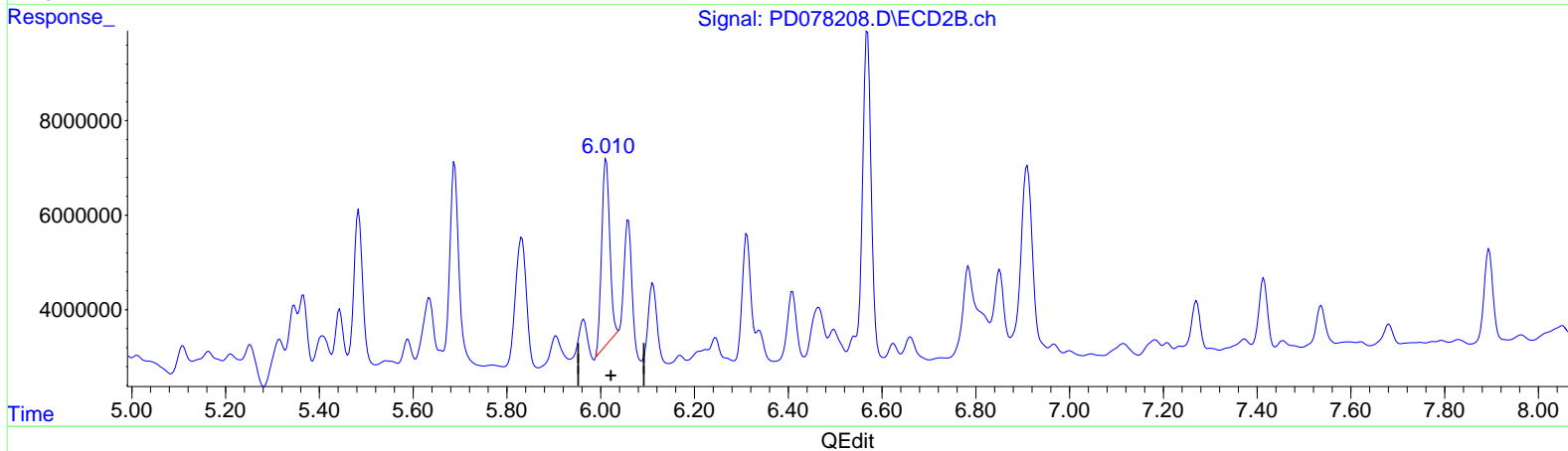
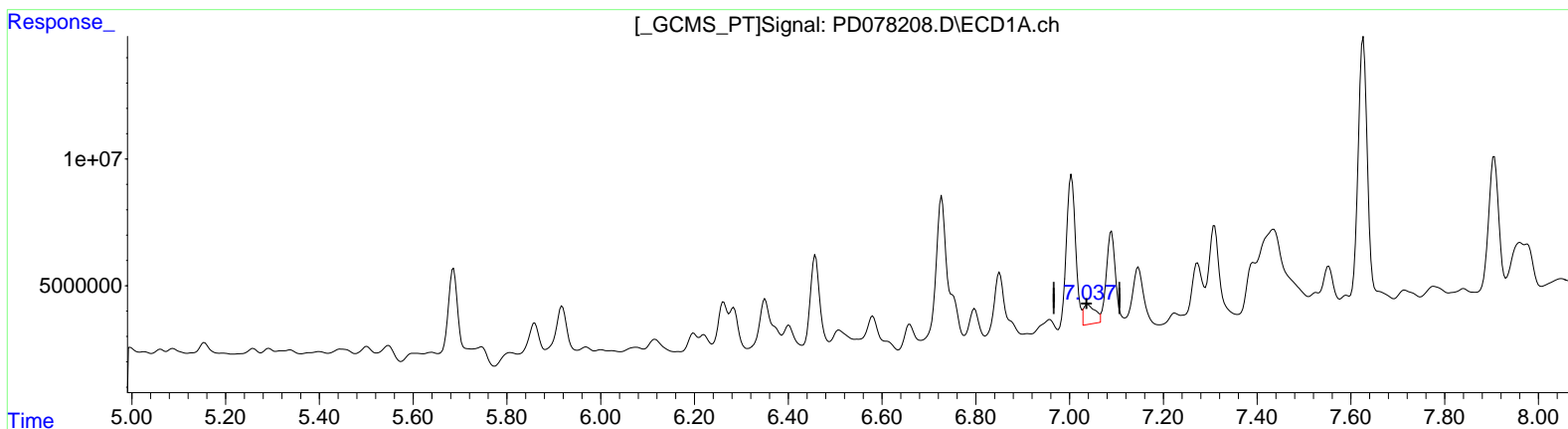
EZYF4

**Manual IntegrationsAPPROVED**

Reviewed By :Abdul Mirza 09/22/2023  
 Supervised By :Ankita Jodhani 09/25/2023

Integration File signal 1: autoint1.e  
 Integration File signal 2: autoint2.e  
 Quant Time: Sep 30 02:01:53 2023  
 Quant Method : Z:\pestpcbsrv\HPCHEM1\ECD\_D\Method\PD090623CLP.M  
 Quant Title : GC Extractables  
 QLast Update : Wed Sep 06 16:40:06 2023  
 Response via : Initial Calibration  
 Integrator: ChemStation

Volume Inj. : 1 µl  
 Signal #1 Phase : ZB-MR1 Signal #2 Phase: ZB-MR2  
 Signal #1 Info : 30M x 0.32mm x0.5 Signal #2 Info : 30M x 0.32mm x 0.25µm



(17) 4,4'-DDT (MA)  
 7.039min 4.928 ng/ml  
 response 13502484

(17) 4,4'-DDT #2 (MA)  
 6.012min 33.100 ng/ml  
 response 46781641

Quantitation Report (Qedit)

Data Path : Z:\pestpcbsrv\HPCHEM1\ECD\_D\Data\PD092323\  
 Data File : PD078208.D  
 Signal(s) : Signal #1: ECD1A.ch Signal #2: ECD2B.ch  
 Acq On : 21 Sep 2023 18:50  
 Operator : AR\AJ  
 Sample : 04417-05  
 Misc :  
 ALS Vial : 7 Sample Multiplier: 1

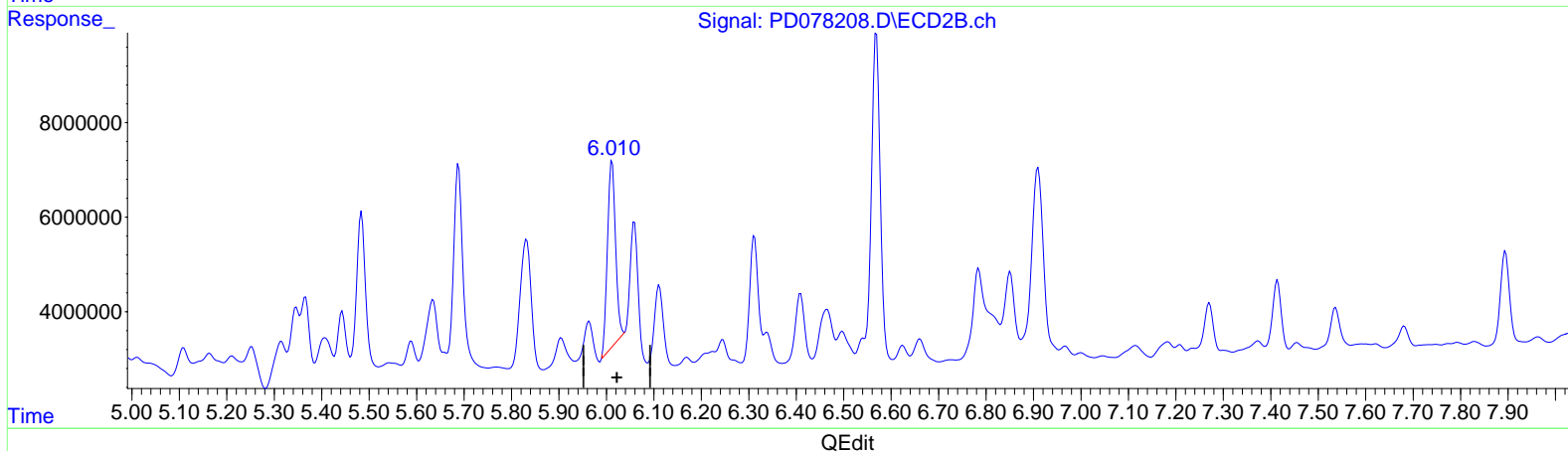
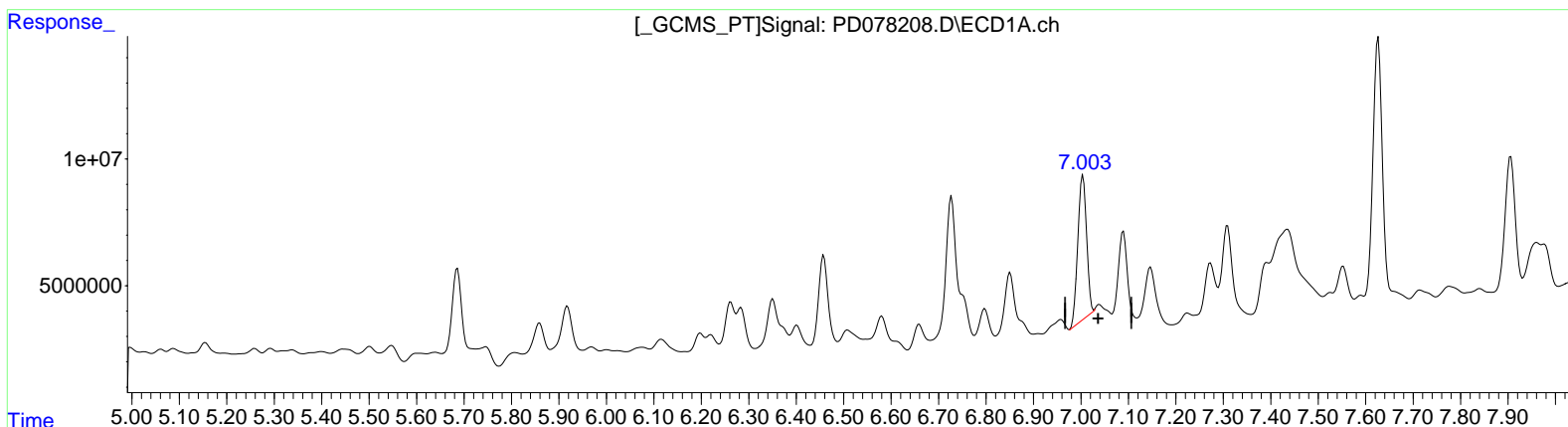
Instrument :  
 ECD\_D  
 ClientSampleId :  
 EZYF4

Manual Integrations APPROVED

Reviewed By : Abdul Mirza 09/22/2023  
 Supervised By : Ankita Jodhani 09/25/2023

Integration File signal 1: autoint1.e  
 Integration File signal 2: autoint2.e  
 Quant Time: Sep 22 00:59:57 2023  
 Quant Method : Z:\pestpcbsrv\HPCHEM1\ECD\_D\Method\PD090623CLP.M  
 Quant Title : GC Extractables  
 QLast Update : Wed Sep 06 16:40:06 2023  
 Response via : Initial Calibration  
 Integrator: ChemStation

Volume Inj. : 1 µl  
 Signal #1 Phase : ZB-MR1 Signal #2 Phase: ZB-MR2  
 Signal #1 Info : 30M x 0.32mm x 0.5 Signal #2 Info : 30M x 0.32mm x 0.25µm



(17) 4,4'-DDT (MA)  
 7.003min 27.037 ng/ml m  
 response 74075539

(17) 4,4'-DDT #2 (MA)  
 6.012min 33.100 ng/ml  
 response 46781641

Data Path : Z:\pestpcbsrv\HPCHEM1\ECD\_D\Data\PD092323\  
 Data File : PD078208.D  
 Signal(s) : Signal #1: ECD1A.ch Signal #2: ECD2B.ch  
 Acq On : 21 Sep 2023 18:50  
 Operator : ARVAJ  
 Sample : 04417-05  
 Misc :  
 ALS Vial : 7 Sample Multiplier: 1

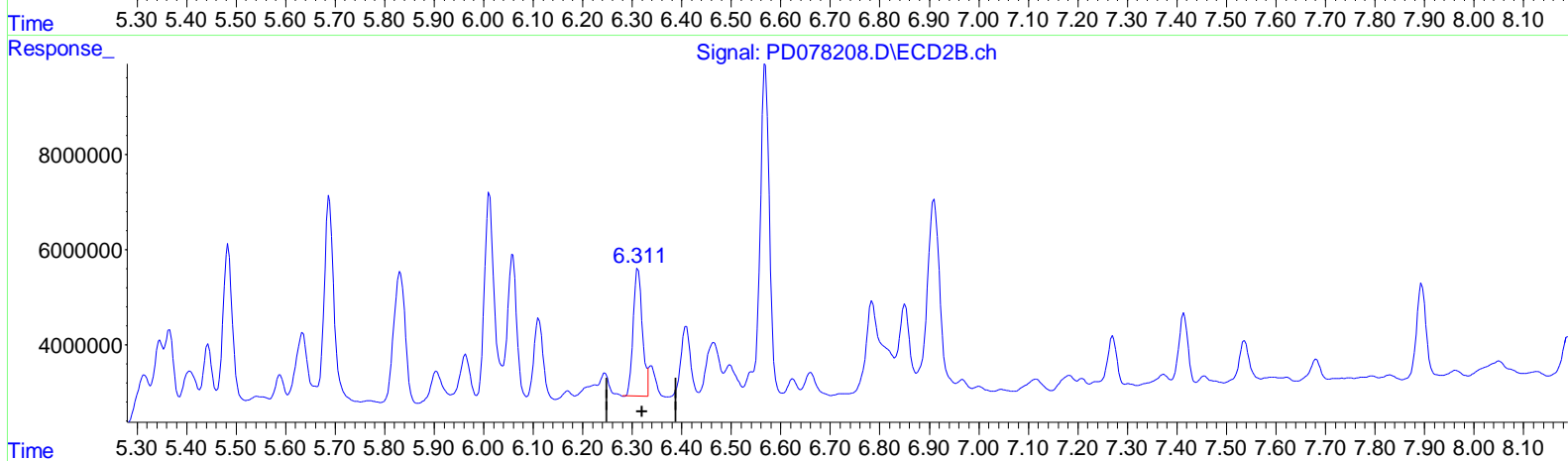
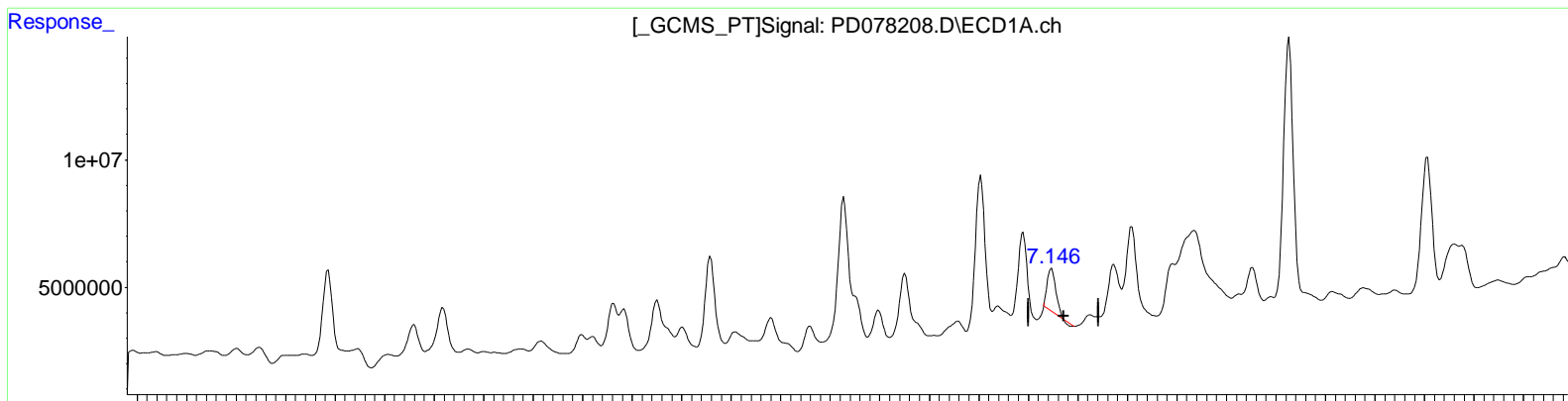
**Instrument :**  
 ECD\_D  
**ClientSampleId :**  
 EZYF4

**Manual IntegrationsAPPROVED**

Reviewed By :Abdul Mirza 09/22/2023  
 Supervised By :Ankita Jodhani 09/25/2023

Integration File signal 1: autoint1.e  
 Integration File signal 2: autoint2.e  
 Quant Time: Sep 22 00:59:57 2023  
 Quant Method : Z:\pestpcbsrv\HPCHEM1\ECD\_D\Method\PD090623CLP.M  
 Quant Title : GC Extractables  
 QLast Update : Wed Sep 06 16:40:06 2023  
 Response via : Initial Calibration  
 Integrator: ChemStation

Volume Inj. : 1 µl  
 Signal #1 Phase : ZB-MR1 Signal #2 Phase: ZB-MR2  
 Signal #1 Info : 30M x 0.32mm x0.5 Signal #2 Info : 30M x 0.32mm x 0.25µm



QEdit

(19) Endosulfan Sulfate (B)  
 7.147min 6.616 ng/ml  
 response 20048788

(19) Endosulfan Sulfate #2 (B)  
 6.312min 20.802 ng/ml  
 response 34369685

Data Path : Z:\pestpcbsrv\HPCHEM1\ECD\_D\Data\PD092323\  
 Data File : PD078208.D  
 Signal(s) : Signal #1: ECD1A.ch Signal #2: ECD2B.ch  
 Acq On : 21 Sep 2023 18:50  
 Operator : ARVAJ  
 Sample : 04417-05  
 Misc :  
 ALS Vial : 7 Sample Multiplier: 1

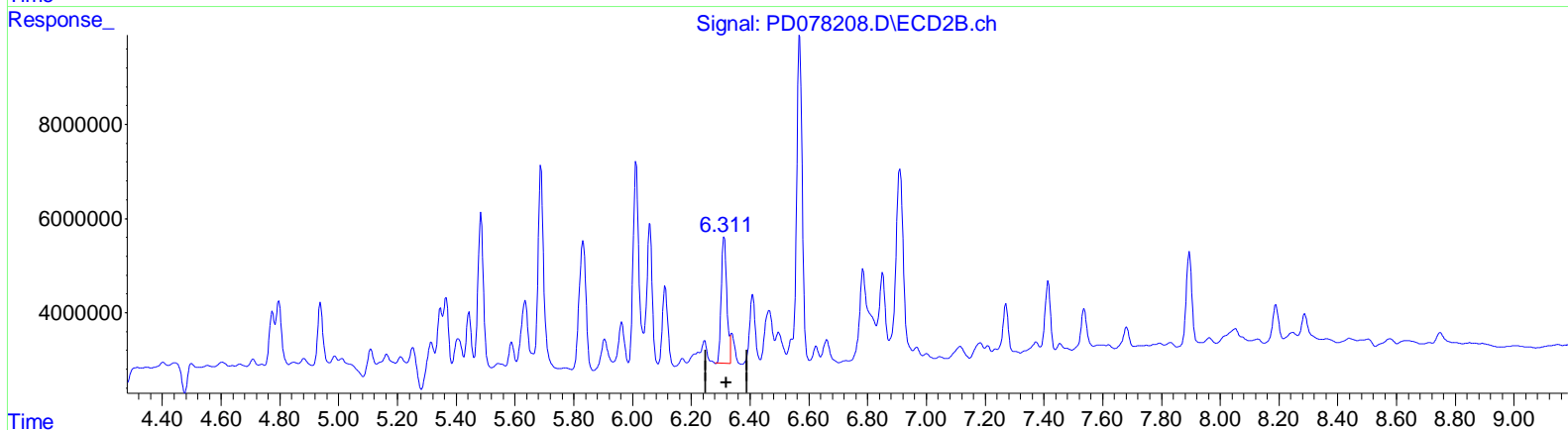
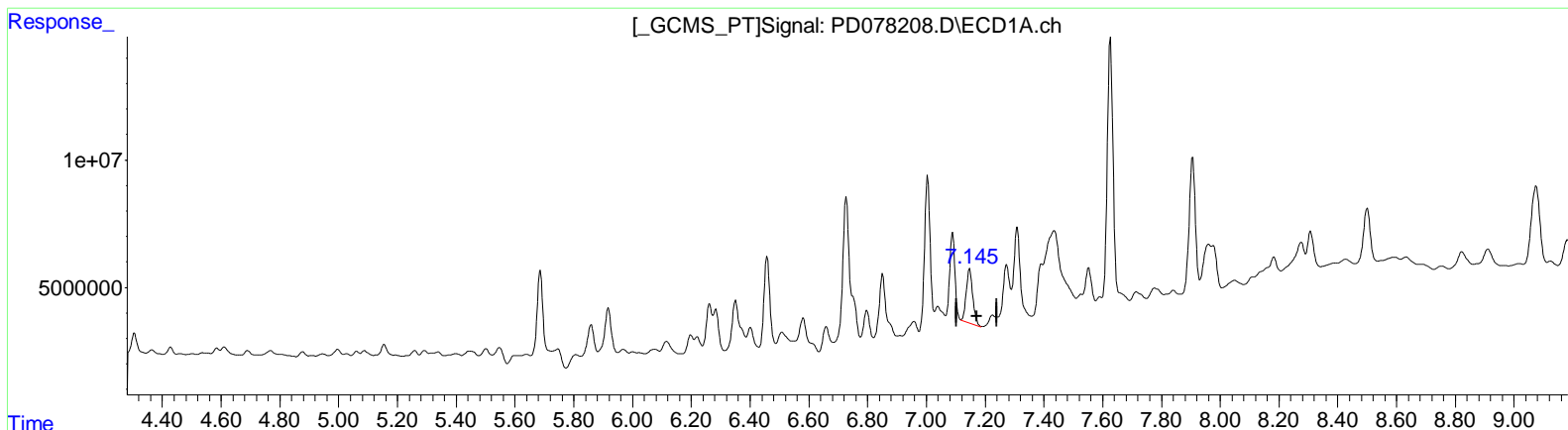
**Instrument :**  
 ECD\_D  
**ClientSampleId :**  
 EZYF4

**Manual IntegrationsAPPROVED**

Reviewed By :Abdul Mirza 09/22/2023  
 Supervised By :Ankita Jodhani 09/25/2023

Integration File signal 1: autoint1.e  
 Integration File signal 2: autoint2.e  
 Quant Time: Sep 22 00:59:57 2023  
 Quant Method : Z:\pestpcbsrv\HPCHEM1\ECD\_D\Method\PD090623CLP.M  
 Quant Title : GC Extractables  
 QLast Update : Wed Sep 06 16:40:06 2023  
 Response via : Initial Calibration  
 Integrator: ChemStation

Volume Inj. : 1 µl  
 Signal #1 Phase : ZB-MR1 Signal #2 Phase: ZB-MR2  
 Signal #1 Info : 30M x 0.32mm x0.5 Signal #2 Info : 30M x 0.32mm x 0.25µm



(19) Endosulfan Sulfate (B)  
 7.145min 10.945 ng/ml m  
 response 33166891

(19) Endosulfan Sulfate #2 (B)  
 6.312min 20.802 ng/ml  
 response 34369685

(+) = Expected Retention Time