

Data Path : Z:\pestpcbsrv\HPCHEM1\ECD\_D\Data\PD092419\  
 Data File : PD054912.D  
 Signal(s) : Signal #1: ECD1A.CH Signal #2: ECD2B.CH  
 Acq On : 24 Sep 2019 13:46  
 Operator : SG\AJ  
 Sample : K4932-15  
 Misc :  
 ALS Vial : 20 Sample Multiplier: 1

**Instrument :**  
 ECD\_D  
**ClientSampled :**  
 BFDM6

**Manual Integrations**  
**APPROVED**  
 Ankita  
 9/25/2019 3:45:13 PM

Integration File signal 1: autoint1.e  
 Integration File signal 2: autoint2.e  
 Quant Time: Sep 25 07:03:47 2019  
 Quant Method : Z:\pestpcbsrv\HPCHEM1\ECD\_D\Method\PD092319CLP.M  
 Quant Title : GC Extractables  
 QLast Update : Tue Sep 24 07:21:19 2019  
 Response via : Initial Calibration  
 Integrator: ChemStation 6890 Scale Mode: Large solvent peaks clipped

Volume Inj. : 1 µl  
 Signal #1 Phase : ZB-MR2 Signal #2 Phase: ZB-MR1  
 Signal #1 Info : 30M x 0.32mm x0.2 Signal #2 Info : 30M x 0.32mm x 0.50µm

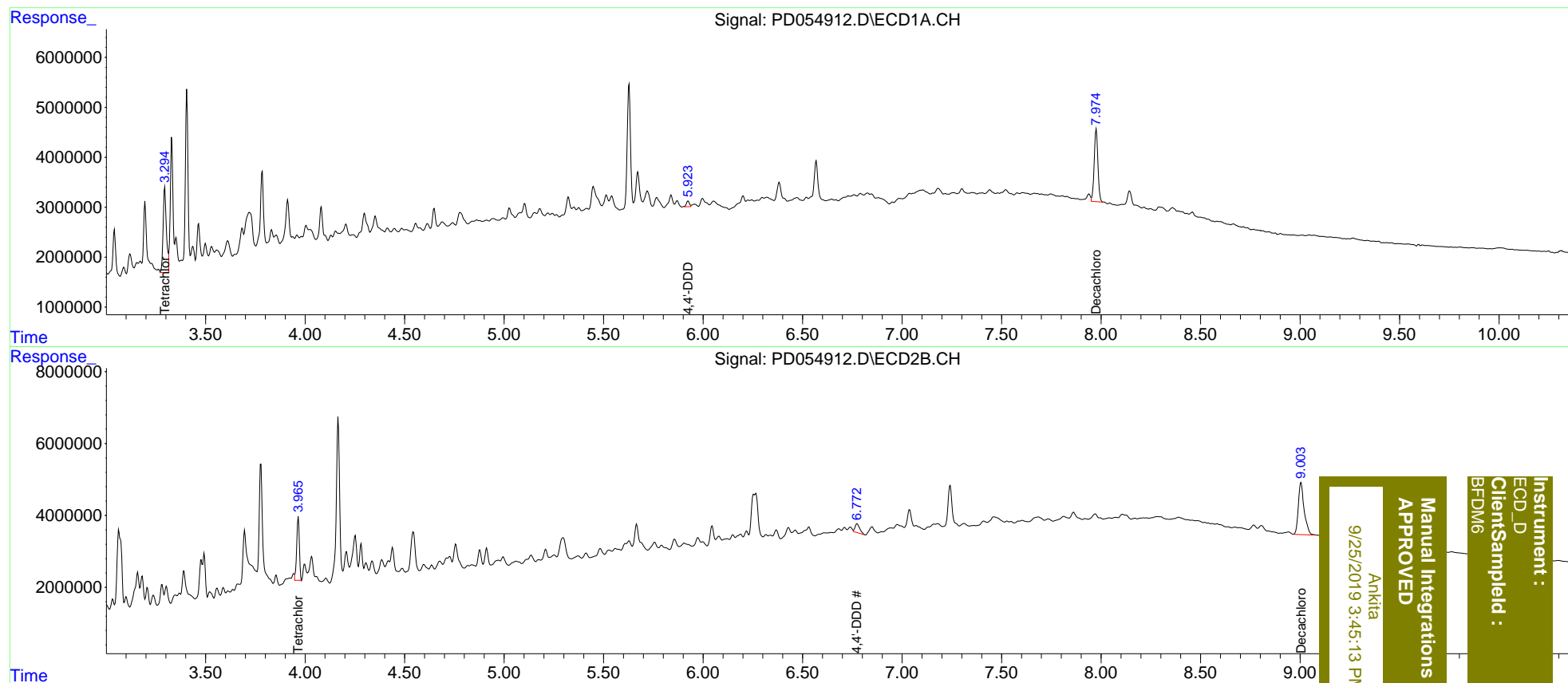
Compound	RT#1	RT#2	Resp#1	Resp#2	ng/ml	ng/ml
-----						
System Monitoring Compounds						
1) SA Tetrachlo...	3.294	3.965	18734404	16452200	24.625m	16.032m#
27) SA Decachlor...	7.974	9.003	18807635	29413820	22.321m	25.246m
Target Compounds						
16) A 4,4'-DDD	5.923	6.772	1227949	4030094	1.693m	3.713m#
-----						

(f)=RT Delta > 1/2 Window (#)=Amounts differ by > 25% (m)=manual int.

Data Path : Z:\pestpcbsrv\HPCHEM1\ECD\_D\Data\PD092419\  
 Data File : PD054912.D  
 Signal(s) : Signal #1: ECD1A.CH Signal #2: ECD2B.CH  
 Acq On : 24 Sep 2019 13:46  
 Operator : SG\AJ  
 Sample : K4932-15  
 Misc :  
 ALS Vial : 20 Sample Multiplier: 1

Integration File signal 1: autoint1.e  
 Integration File signal 2: autoint2.e  
 Quant Time: Sep 25 07:03:47 2019  
 Quant Method : Z:\pestpcbsrv\HPCHEM1\ECD\_D\Method\PD092319CLP.M  
 Quant Title : GC Extractables  
 QLast Update : Tue Sep 24 07:21:19 2019  
 Response via : Initial Calibration  
 Integrator: ChemStation 6890 Scale Mode: Large solvent peaks clipped

Volume Inj. : 1 µl  
 Signal #1 Phase : ZB-MR2 Signal #2 Phase: ZB-MR1  
 Signal #1 Info : 30M x 0.32mm x0.2 Signal #2 Info : 30M x 0.32mm x 0.50µm



Instrument :  
 ECD\_D  
 ClientSampleId :  
 BFDW6

Manual Integrations  
 APPROVED  
 Ankitia  
 9/25/2019 3:45:13 PM