

Data Path : Z:\pestpcbsrv\HPCHEM1\ECD\_D\Data\PD092419\  
 Data File : PD054918.D  
 Signal(s) : Signal #1: ECD1A.CH Signal #2: ECD2B.CH  
 Acq On : 24 Sep 2019 15:09  
 Operator : SG\AJ  
 Sample : PIBLK33  
 Misc :  
 ALS Vial : 2 Sample Multiplier: 1

Instrument :  
 ECD\_D  
 ClientSampleId :  
 PIBLK33

Integration File signal 1: autoint1.e  
 Integration File signal 2: autoint2.e  
 Quant Time: Sep 25 07:05:24 2019  
 Quant Method : Z:\pestpcbsrv\HPCHEM1\ECD\_D\Method\PD092319CLP.M  
 Quant Title : GC Extractables  
 QLast Update : Tue Sep 24 07:21:19 2019  
 Response via : Initial Calibration  
 Integrator: ChemStation 6890 Scale Mode: Large solvent peaks clipped

Volume Inj. : 1 µl  
 Signal #1 Phase : ZB-MR2 Signal #2 Phase: ZB-MR1  
 Signal #1 Info : 30M x 0.32mm x0.2 Signal #2 Info : 30M x 0.32mm x 0.50µm

Compound	RT#1	RT#2	Resp#1	Resp#2	ng/ml	ng/ml
-----						
System Monitoring Compounds						
1) SA Tetrachlo...	3.294	3.967	17440926	23117836	22.925	22.528
27) SA Decachlor...	7.976	9.004	34129521	44794217	40.506	38.448

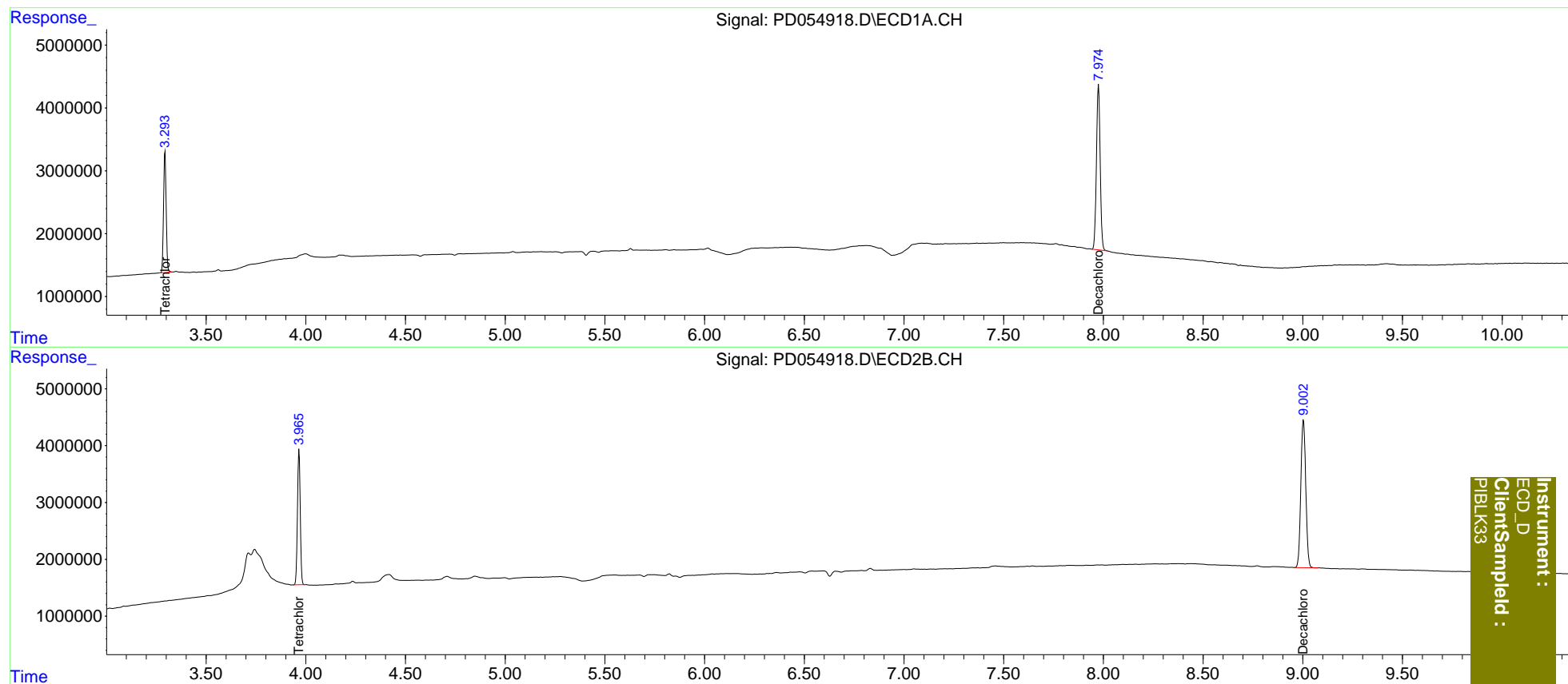
Target Compounds

(f)=RT Delta > 1/2 Window (#)=Amounts differ by > 25% (m)=manual int.

Data Path : Z:\pestpcbsrv\HPCHEM1\ECD\_D\Data\PD092419\  
Data File : PD054918.D  
Signal(s) : Signal #1: ECD1A.CH Signal #2: ECD2B.CH  
Acq On : 24 Sep 2019 15:09  
Operator : SG\AJ  
Sample : PIBLK33  
Misc :  
ALS Vial : 2 Sample Multiplier: 1

Integration File signal 1: autoint1.e  
Integration File signal 2: autoint2.e  
Quant Time: Sep 25 07:05:24 2019  
Quant Method : Z:\pestpcbsrv\HPCHEM1\ECD\_D\Method\PD092319CLP.M  
Quant Title : GC Extractables  
QLast Update : Tue Sep 24 07:21:19 2019  
Response via : Initial Calibration  
Integrator: ChemStation 6890 Scale Mode: Large solvent peaks clipped

Volume Inj. : 1 µl  
Signal #1 Phase : ZB-MR2 Signal #2 Phase: ZB-MR1  
Signal #1 Info : 30M x 0.32mm x 0.2 Signal #2 Info : 30M x 0.32mm x 0.50µm



Instrument :  
ECD\_D  
ClientSampleId :  
PIBLK33