

Data Path : Z:\pestpcbsrv\HPCHEM1\ECD_D\Data\PD092420\
 Data File : PD059317.D
 Signal(s) : Signal #1: ECD1A.ch Signal #2: ECD2B.ch
 Acq On : 25 Sep 2020 00:10
 Operator : DD\AJ
 Sample : INDB501
 Misc :
 ALS Vial : 18 Sample Multiplier: 1

Instrument :
 ECD_D
 ClientSampleId :

Integration File signal 1: autoint1.e
 Integration File signal 2: autoint2.e
 Quant Time: Sep 25 02:34:57 2020
 Quant Method : Z:\pestpcbsrv\HPCHEM1\ECD_D\Method\PD092420CLP.M
 Quant Title : GC Extractables
 QLast Update : Fri Sep 25 02:27:22 2020
 Response via : Initial Calibration
 Integrator: ChemStation

Volume Inj. : 1 µl
 Signal #1 Phase : ZB-MR2 Signal #2 Phase: ZB-MR1
 Signal #1 Info : 30M x 0.32mm x0.2 Signal #2 Info : 30M x 0.32mm x 0.50µm

	Compound	RT#1	RT#2	Resp#1	Resp#2	ng/ml	ng/ml

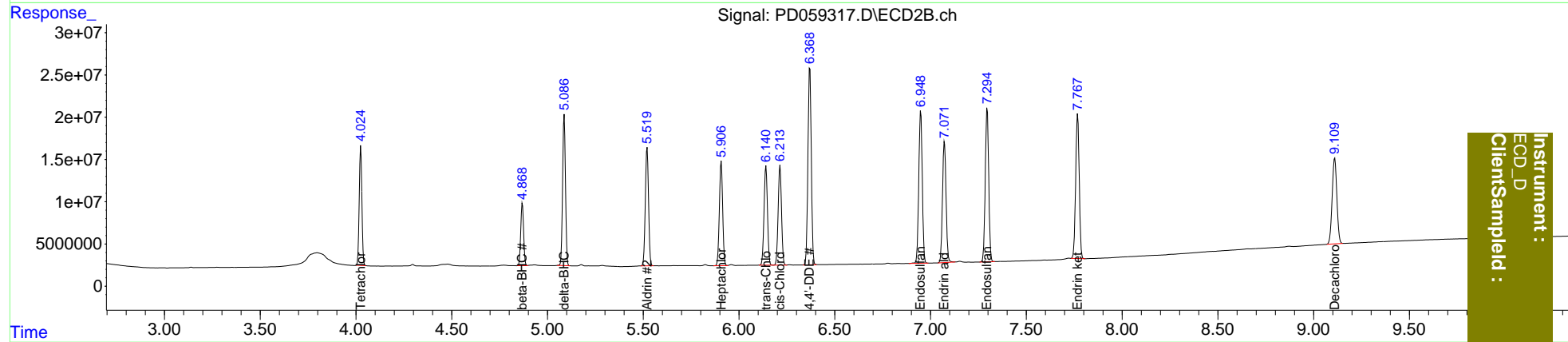
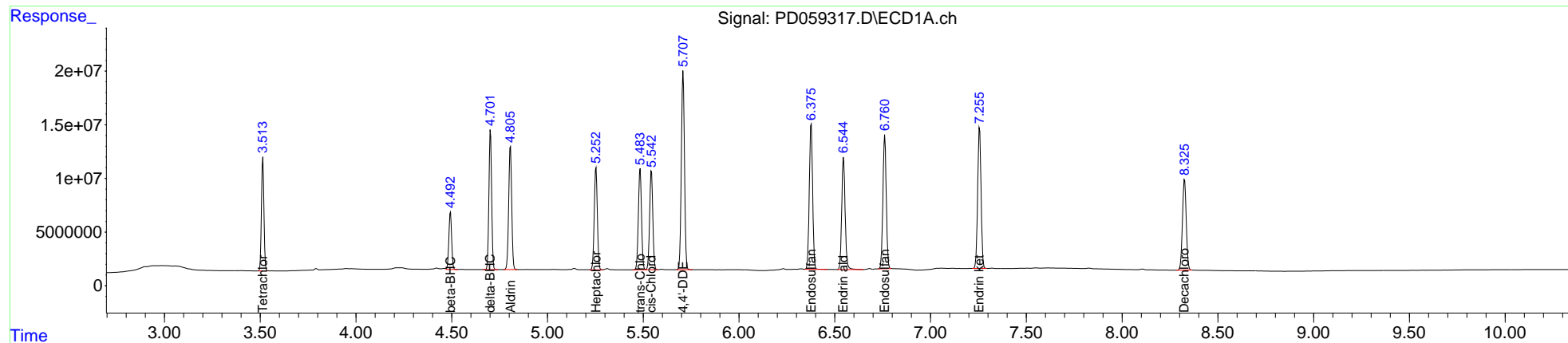
System Monitoring Compounds							
1)	SA Tetrachlo...	3.514	4.025	95473773	136.4E6	73.670	77.988
27)	SA Decachlor...	8.326	9.110	116.3E6	172.6E6	140.926	151.143
Target Compounds							
5)	MB Aldrin	4.807	5.521	125.8E6	163.8E6	78.044	80.519
6)	B beta-BHC	4.494	4.869	53774148	77334581	69.871	74.964
7)	B delta-BHC	4.702	5.088	127.7E6	185.5E6	77.546	81.108
8)	B Heptachlo...	5.254	5.908	106.9E6	147.1E6	74.976	78.301
10)	B trans-Chl...	5.484	6.141	107.3E6	145.3E6	75.635	79.636
11)	B cis-Chlor...	5.543	6.215	105.5E6	143.2E6	74.680	78.816
12)	B 4,4'-DDE	5.708	6.370	210.0E6	283.1E6	157.590	165.500
15)	B Endosulfa...	6.377	6.949	164.1E6	229.6E6	152.173	160.801
18)	B Endrin al...	6.546	7.073	130.1E6	185.6E6	146.394	156.591
19)	B Endosulfa...	6.761	7.296	150.6E6	227.5E6	146.965	156.683
21)	B Endrin ke...	7.256	7.768	161.3E6	221.1E6	149.953	158.007

(f)=RT Delta > 1/2 Window (#)=Amounts differ by > 25% (m)=manual int.

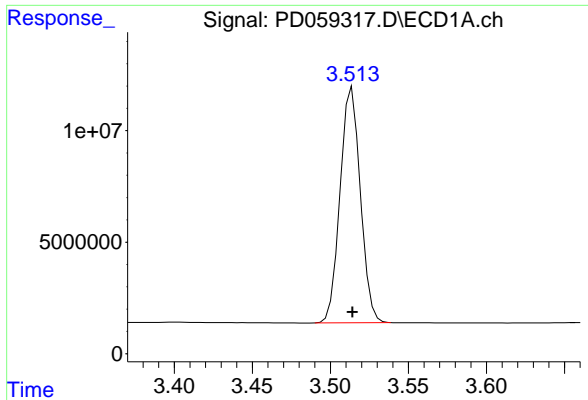
Data Path : Z:\pestpcbsrv\HPCHEM1\ECD_D\Data\PD092420\
 Data File : PD059317.D
 Signal(s) : Signal #1: ECD1A.ch Signal #2: ECD2B.ch
 Acq On : 25 Sep 2020 00:10
 Operator : DD\AJ
 Sample : INDB501
 Misc :
 ALS Vial : 18 Sample Multiplier: 1

Integration File signal 1: autoint1.e
 Integration File signal 2: autoint2.e
 Quant Time: Sep 25 02:34:57 2020
 Quant Method : Z:\pestpcbsrv\HPCHEM1\ECD_D\Method\PD092420CLP.M
 Quant Title : GC Extractables
 QLast Update : Fri Sep 25 02:27:22 2020
 Response via : Initial Calibration
 Integrator: ChemStation

Volume Inj. : 1 µl
 Signal #1 Phase : ZB-MR2 Signal #2 Phase: ZB-MR1
 Signal #1 Info : 30M x 0.32mm x0.2 Signal #2 Info : 30M x 0.32mm x 0.50µm



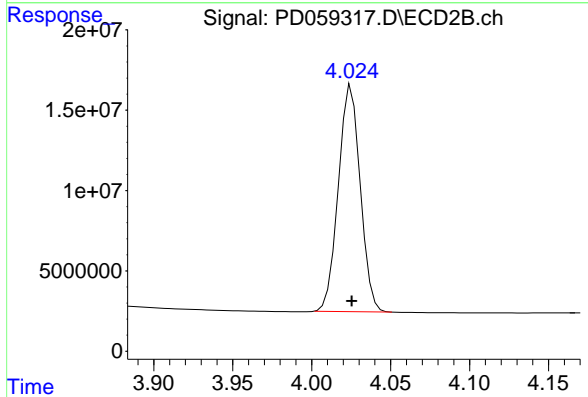
Instrument :
 ECD_D
 ClientSampleId :



#1 Tetrachloro-m-xylene

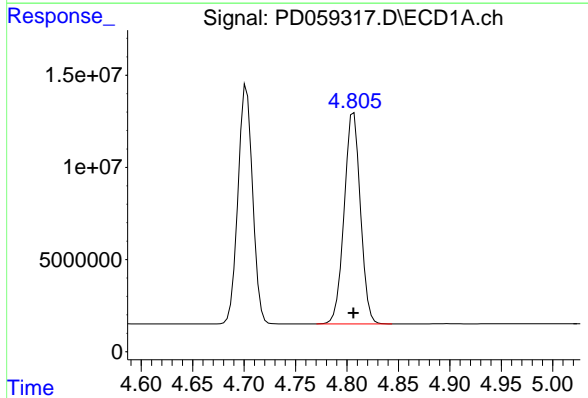
R.T.: 3.514 min
 Delta R.T.: 0.000 min
 Response: 95473773
 Conc: 73.67 ng/ml

Instrument :
 ECD_D
 ClientSampleId :



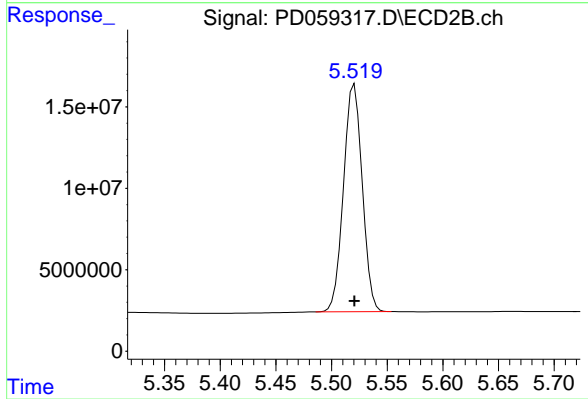
#1 Tetrachloro-m-xylene

R.T.: 4.025 min
 Delta R.T.: 0.000 min
 Response: 136382182
 Conc: 77.99 ng/ml



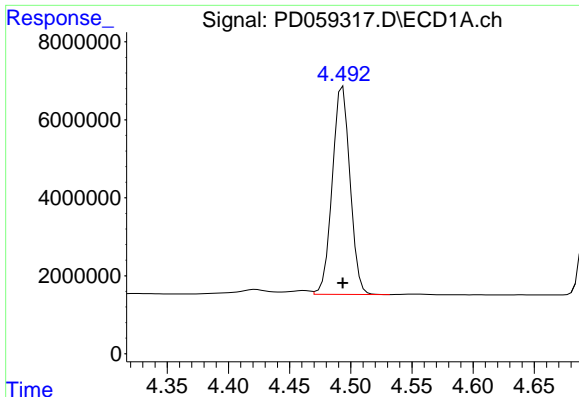
#5 Aldrin

R.T.: 4.807 min
 Delta R.T.: 0.000 min
 Response: 125832810
 Conc: 78.04 ng/ml



#5 Aldrin

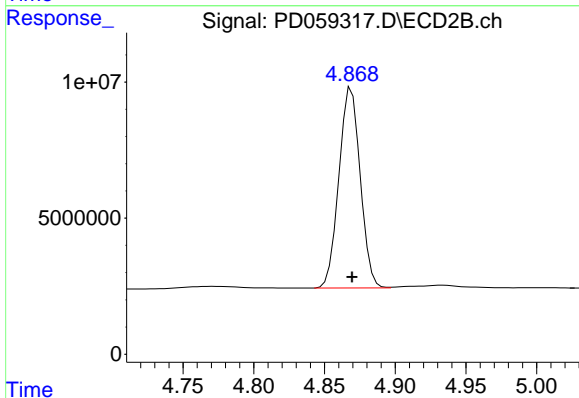
R.T.: 5.521 min
 Delta R.T.: 0.000 min
 Response: 163750650
 Conc: 80.52 ng/ml



#6 beta-BHC

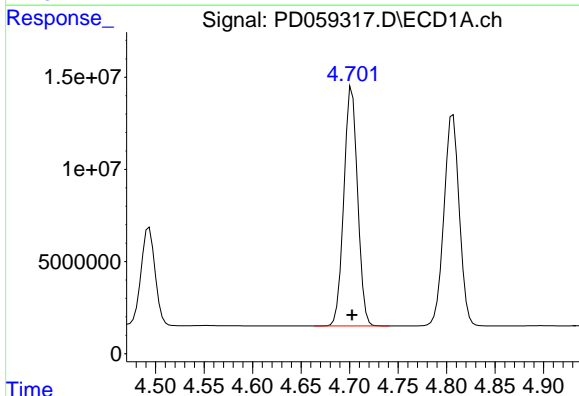
R.T.: 4.494 min
Delta R.T.: 0.000 min
Response: 53774148
Conc: 69.87 ng/ml

Instrument :
ECD_D
ClientSampled :



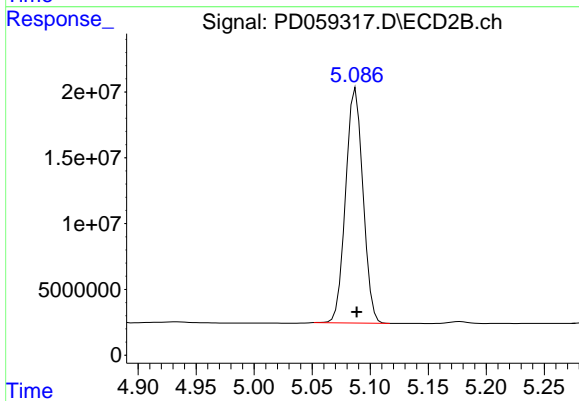
#6 beta-BHC

R.T.: 4.869 min
Delta R.T.: 0.000 min
Response: 77334581
Conc: 74.96 ng/ml



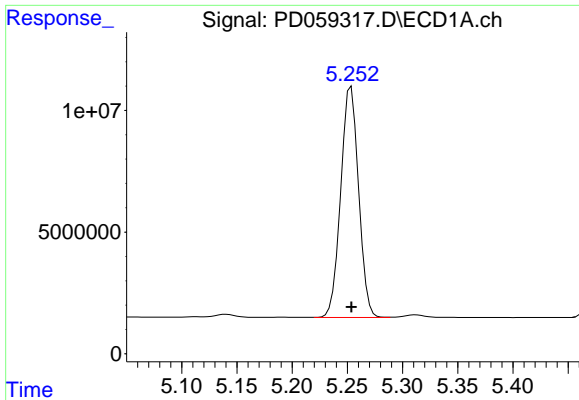
#7 delta-BHC

R.T.: 4.702 min
Delta R.T.: 0.000 min
Response: 127687954
Conc: 77.55 ng/ml



#7 delta-BHC

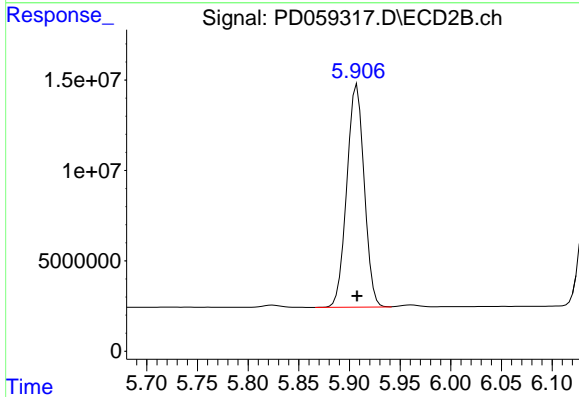
R.T.: 5.088 min
Delta R.T.: 0.000 min
Response: 185537194
Conc: 81.11 ng/ml



#8 Heptachlor epoxide

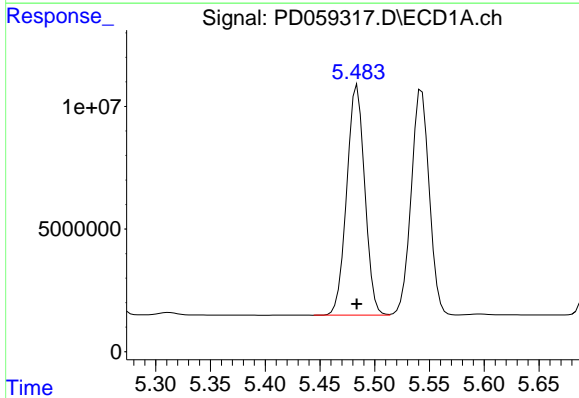
R.T.: 5.254 min
 Delta R.T.: 0.000 min
 Response: 106927239
 Conc: 74.98 ng/ml

Instrument :
 ECD_D
 ClientSampled :



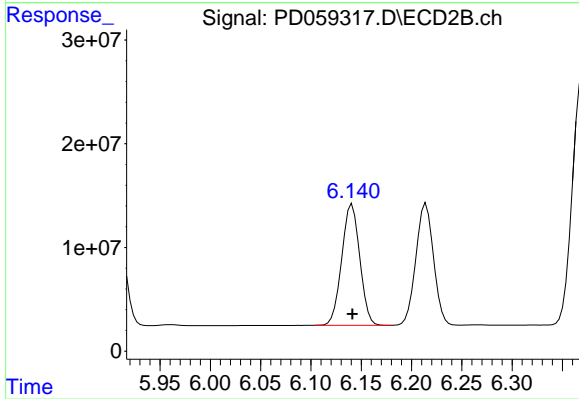
#8 Heptachlor epoxide

R.T.: 5.908 min
 Delta R.T.: 0.000 min
 Response: 147093300
 Conc: 78.30 ng/ml



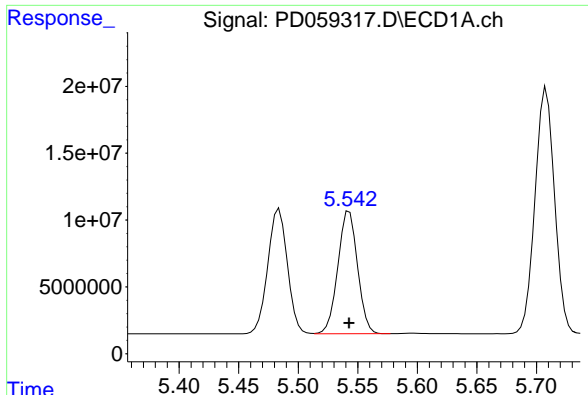
#10 trans-Chlordane

R.T.: 5.484 min
 Delta R.T.: 0.000 min
 Response: 107299352
 Conc: 75.63 ng/ml



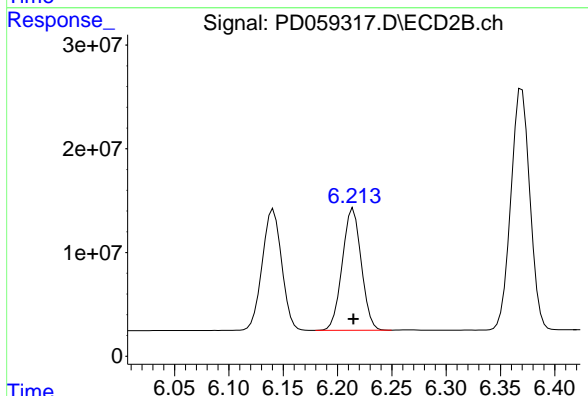
#10 trans-Chlordane

R.T.: 6.141 min
 Delta R.T.: 0.000 min
 Response: 145343312
 Conc: 79.64 ng/ml

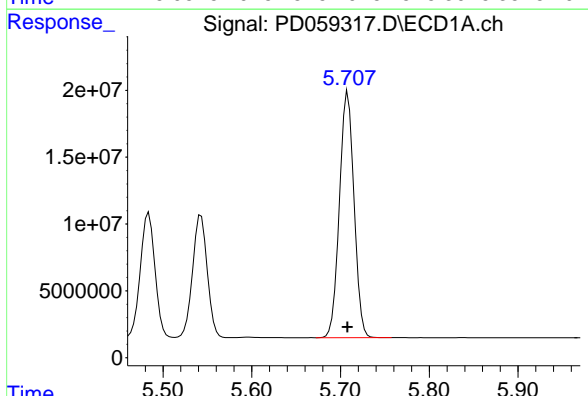


#11 cis-Chlordane
 R.T.: 5.543 min
 Delta R.T.: 0.000 min
 Response: 105528930
 Conc: 74.68 ng/ml

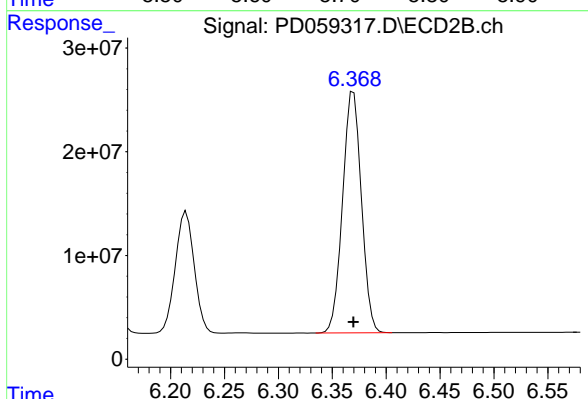
Instrument :
 ECD_D
 ClientSampled :



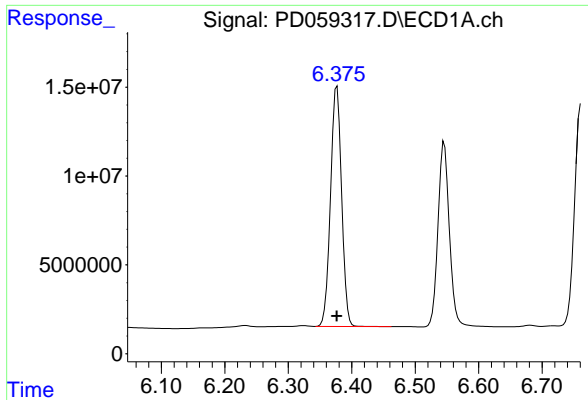
#11 cis-Chlordane
 R.T.: 6.215 min
 Delta R.T.: 0.000 min
 Response: 143232733
 Conc: 78.82 ng/ml



#12 4,4'-DDE
 R.T.: 5.708 min
 Delta R.T.: 0.000 min
 Response: 210028725
 Conc: 157.59 ng/ml



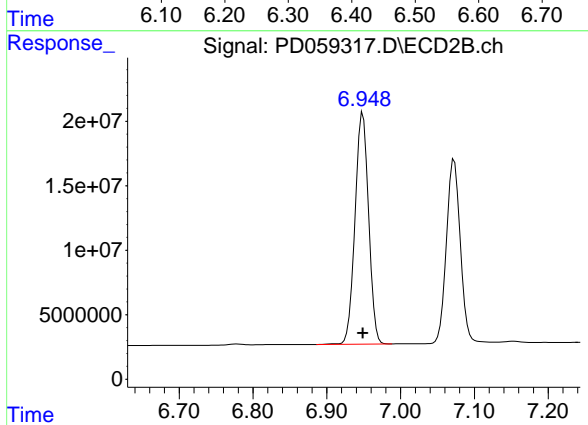
#12 4,4'-DDE
 R.T.: 6.370 min
 Delta R.T.: 0.000 min
 Response: 283102061
 Conc: 165.50 ng/ml



#15 Endosulfan II

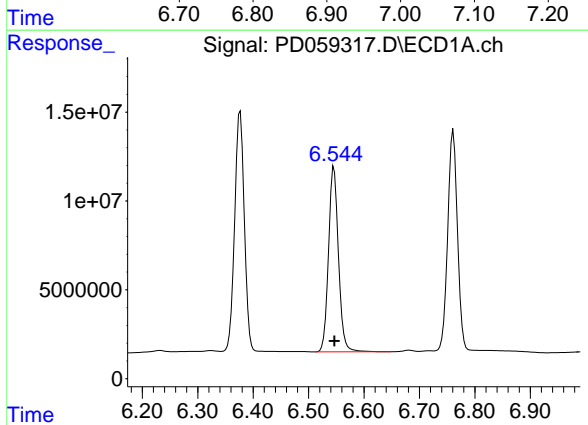
R.T.: 6.377 min
Delta R.T.: 0.000 min
Response: 164117347
Conc: 152.17 ng/ml

Instrument :
ECD_D
ClientSampled :



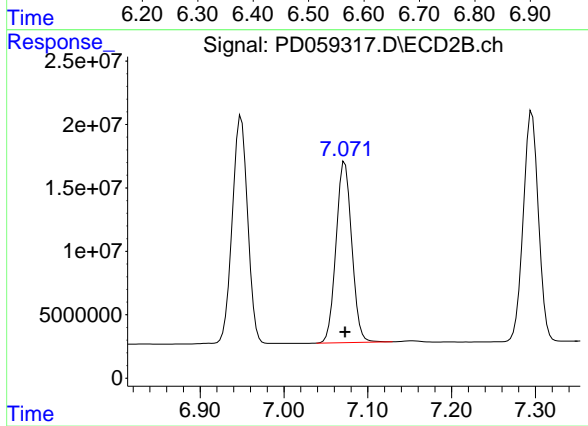
#15 Endosulfan II

R.T.: 6.949 min
Delta R.T.: 0.000 min
Response: 229630723
Conc: 160.80 ng/ml



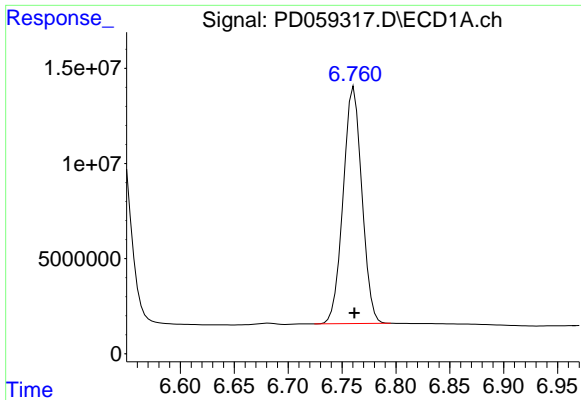
#18 Endrin aldehyde

R.T.: 6.546 min
Delta R.T.: 0.000 min
Response: 130101534
Conc: 146.39 ng/ml



#18 Endrin aldehyde

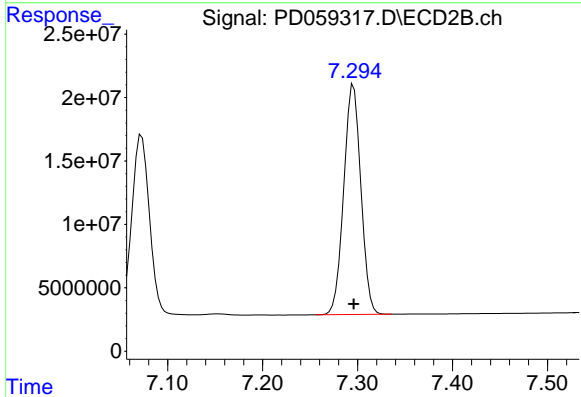
R.T.: 7.073 min
Delta R.T.: 0.000 min
Response: 185610908
Conc: 156.59 ng/ml



#19 Endosulfan Sulfate

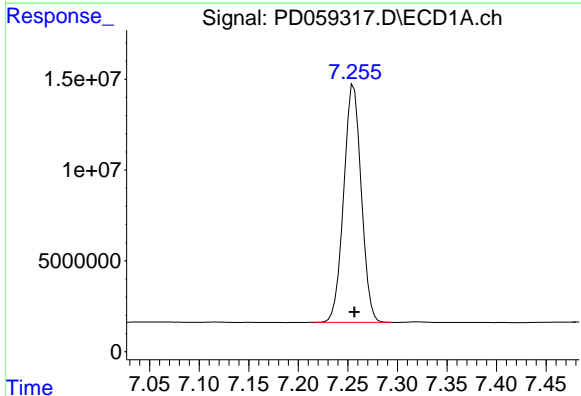
R.T.: 6.761 min
Delta R.T.: 0.000 min
Response: 150618466
Conc: 146.97 ng/ml

Instrument :
ECD_D
ClientSampleId :



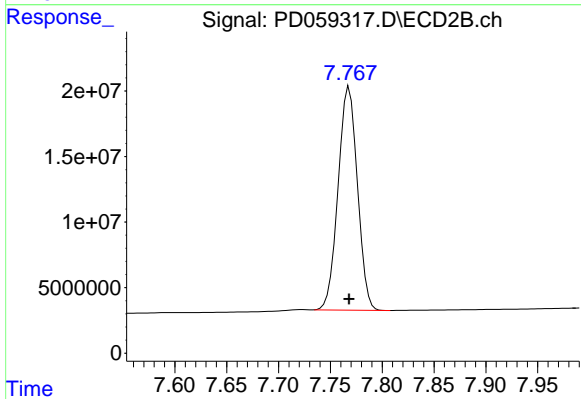
#19 Endosulfan Sulfate

R.T.: 7.296 min
Delta R.T.: 0.000 min
Response: 227505380
Conc: 156.68 ng/ml



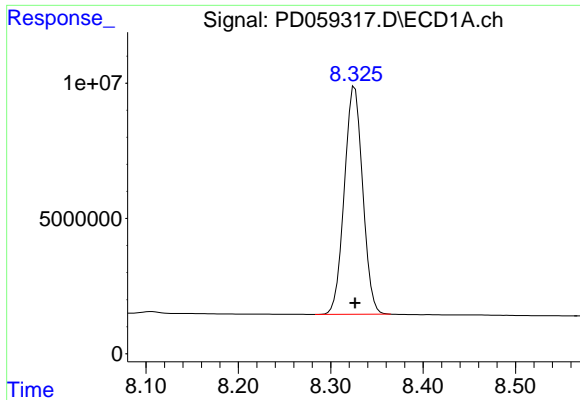
#21 Endrin ketone

R.T.: 7.256 min
Delta R.T.: 0.000 min
Response: 161346566
Conc: 149.95 ng/ml



#21 Endrin ketone

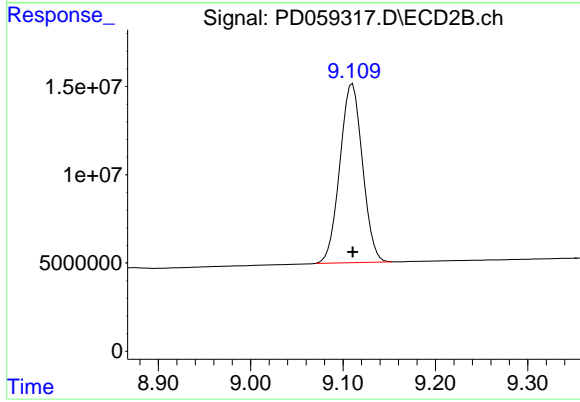
R.T.: 7.768 min
Delta R.T.: 0.000 min
Response: 221132016
Conc: 158.01 ng/ml



#27 Decachlorobiphenyl

R.T.: 8.326 min
Delta R.T.: 0.000 min
Response: 116267444
Conc: 140.93 ng/ml

Instrument :
ECD_D
ClientSampleId :



#27 Decachlorobiphenyl

R.T.: 9.110 min
Delta R.T.: 0.000 min
Response: 172627291
Conc: 151.14 ng/ml