

Data Path : Z:\pestpcbsrv\HPCHEM1\ECD_D\Data\PD092420\
 Data File : PD059317.D
 Signal(s) : Signal #1: ECD1A.ch Signal #2: ECD2B.ch
 Acq On : 25 Sep 2020 00:10
 Operator : DD\AJ
 Sample : INDB501
 Misc :
 ALS Vial : 18 Sample Multiplier: 1

Instrument :
 ECD_D
 ClientSampleId :
 INDB501

Integration File signal 1: autoint1.e
 Integration File signal 2: autoint2.e
 Quant Time: Sep 25 02:34:57 2020
 Quant Method : Z:\pestpcbsrv\HPCHEM1\ECD_D\Method\PD092420CLP.M
 Quant Title : GC Extractables
 QLast Update : Fri Sep 25 02:27:22 2020
 Response via : Initial Calibration
 Integrator: ChemStation

Volume Inj. : 1 µl
 Signal #1 Phase : ZB-MR2 Signal #2 Phase: ZB-MR1
 Signal #1 Info : 30M x 0.32mm x0.2 Signal #2 Info : 30M x 0.32mm x 0.50µm

Compound	RT#1	RT#2	Resp#1	Resp#2	ng/ml	ng/ml

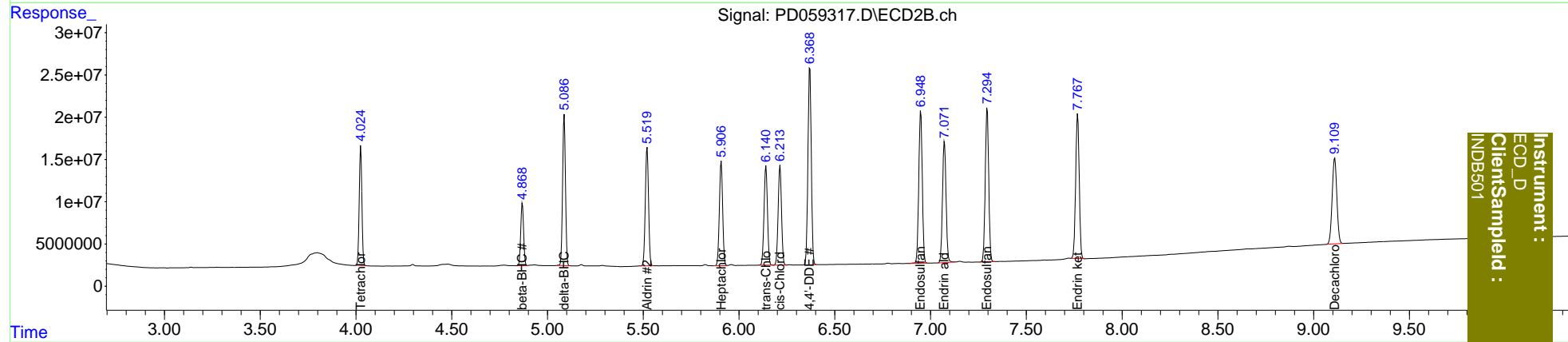
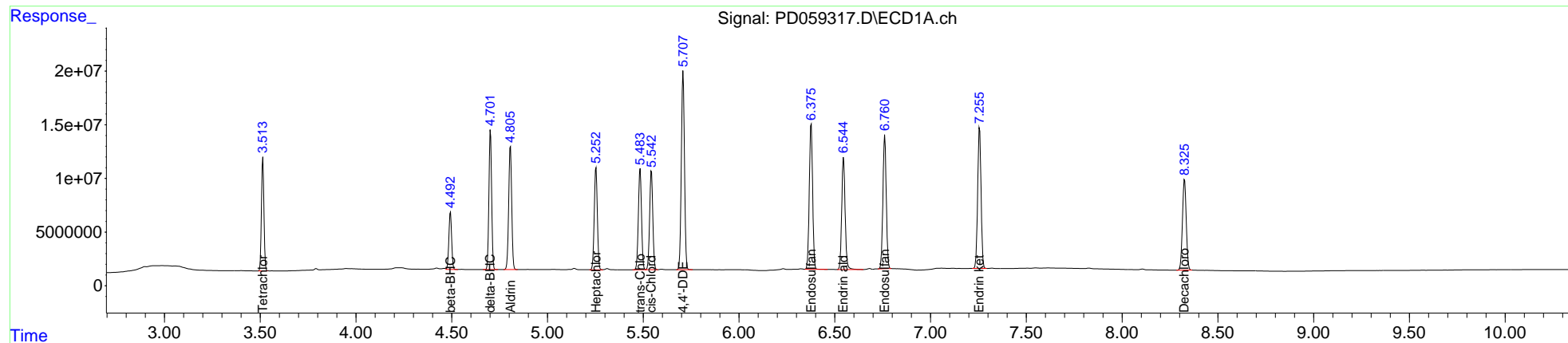
System Monitoring Compounds						
1) SA Tetrachlo...	3.514	4.025	95473773	136.4E6	73.670	77.988
27) SA Decachlor...	8.326	9.110	116.3E6	172.6E6	140.926	151.143
Target Compounds						
5) MB Aldrin	4.807	5.521	125.8E6	163.8E6	78.044	80.519
6) B beta-BHC	4.494	4.869	53774148	77334581	69.871	74.964
7) B delta-BHC	4.702	5.088	127.7E6	185.5E6	77.546	81.108
8) B Heptachlo...	5.254	5.908	106.9E6	147.1E6	74.976	78.301
10) B trans-Chl...	5.484	6.141	107.3E6	145.3E6	75.635	79.636
11) B cis-Chlor...	5.543	6.215	105.5E6	143.2E6	74.680	78.816
12) B 4,4'-DDE	5.708	6.370	210.0E6	283.1E6	157.590	165.500
15) B Endosulfa...	6.377	6.949	164.1E6	229.6E6	152.173	160.801
18) B Endrin al...	6.546	7.073	130.1E6	185.6E6	146.394	156.591
19) B Endosulfa...	6.761	7.296	150.6E6	227.5E6	146.965	156.683
21) B Endrin ke...	7.256	7.768	161.3E6	221.1E6	149.953	158.007

(f)=RT Delta > 1/2 Window (#)=Amounts differ by > 25% (m)=manual int.

Data Path : Z:\pestpcbsrv\HPCHEM1\ECD_D\Data\PD092420\
 Data File : PD059317.D
 Signal(s) : Signal #1: ECD1A.ch Signal #2: ECD2B.ch
 Acq On : 25 Sep 2020 00:10
 Operator : DD\AJ
 Sample : INDB501
 Misc :
 ALS Vial : 18 Sample Multiplier: 1

Integration File signal 1: autoint1.e
 Integration File signal 2: autoint2.e
 Quant Time: Sep 25 02:34:57 2020
 Quant Method : Z:\pestpcbsrv\HPCHEM1\ECD_D\Method\PD092420CLP.M
 Quant Title : GC Extractables
 QLast Update : Fri Sep 25 02:27:22 2020
 Response via : Initial Calibration
 Integrator: ChemStation

Volume Inj. : 1 µl
 Signal #1 Phase : ZB-MR2 Signal #2 Phase: ZB-MR1
 Signal #1 Info : 30M x 0.32mm x0.2 Signal #2 Info : 30M x 0.32mm x 0.50µm



Instrument :
 ECD_D
 ClientSampleId :
 INDB501