

Data Path : Z:\pestpcbsrv\HPCHEM1\ECD_D\Data\PD092424\
 Data File : PD085614.D
 Signal(s) : Signal #1: ECD1A.ch Signal #2: ECD2B.ch
 Acq On : 24 Sep 2024 14:07
 Operator : AR\AJ
 Sample : P4016-09
 Misc :
 ALS Vial : 18 Sample Multiplier: 1

Instrument :
 ECD_D
 ClientSampleId :
 DCVW0

Integration File signal 1: autoint1.e
 Integration File signal 2: autoint2.e
 Quant Time: Sep 25 05:15:46 2024
 Quant Method : Z:\pestpcbsrv\HPCHEM1\ECD_D\Method\PD091924CLP.M
 Quant Title : GC Extractables
 QLast Update : Fri Sep 20 05:48:22 2024
 Response via : Initial Calibration
 Integrator: ChemStation

Volume Inj. : 1 µl
 Signal #1 Phase : ZB-MR1 Signal #2 Phase: ZB-MR2
 Signal #1 Info : 30M x 0.32mm x0.5 Signal #2 Info : 30M x 0.32mm x 0.25µm

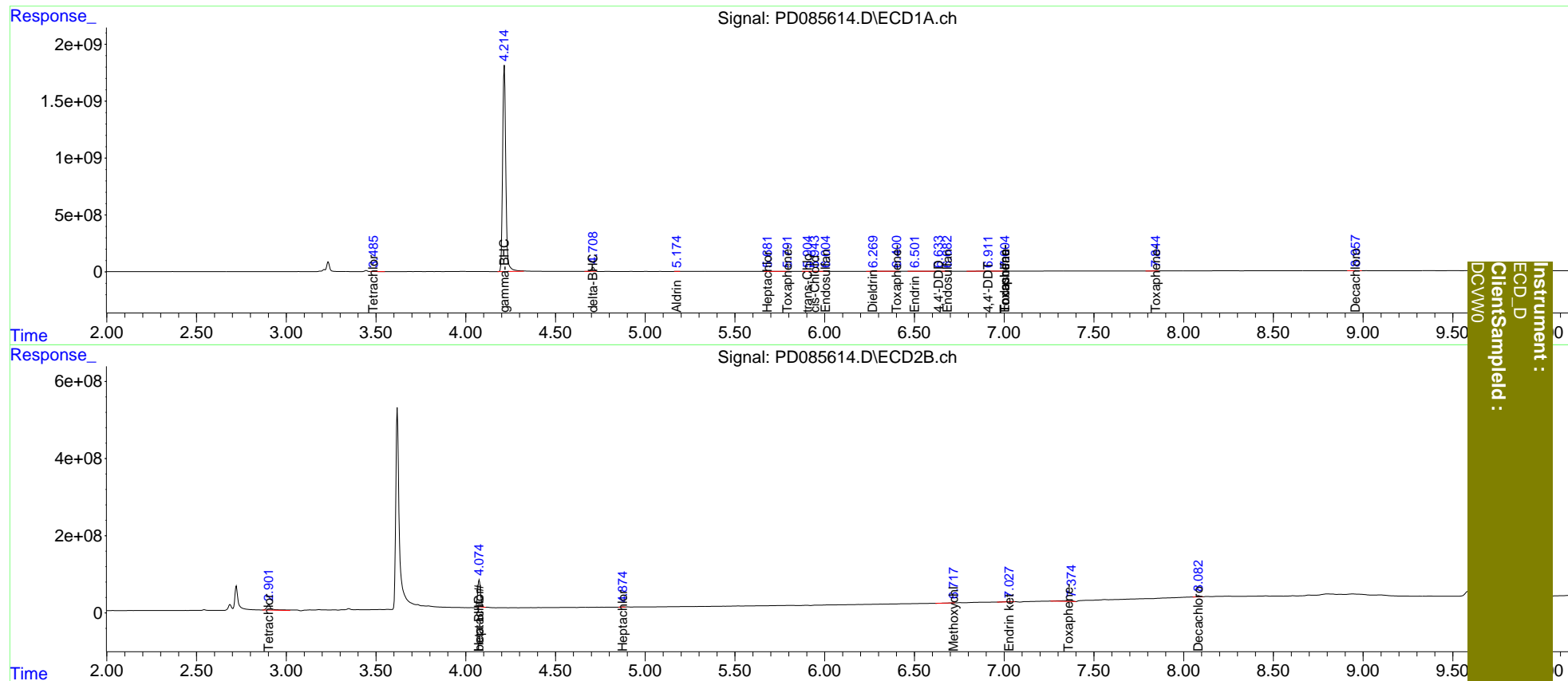
| Compound | RT#1 | RT#2 | Resp#1 | Resp#2 | ng/ml | ng/ml |
|-----------------------------|--------|--------|-----------|----------|----------|------------|
| System Monitoring Compounds | | | | | | |
| 1) SA Tetrachlo... | 3.486 | 2.902 | 7178543 | 270.7E6 | 5.928 | 71.618 # |
| 2) SA Decachlor... | 8.958 | 8.083 | 22409846 | 42182112 | 13.661 | 15.779 |
| Target Compounds | | | | | | |
| 3) MA gamma-BHC... | 4.215f | 0.000 | 18752.1E6 | 0 | 7495.338 | N.D. # |
| 4) MA Heptachlor | 0.000 | 4.075 | 0 | 765.1E6 | N.D. | 161.175 |
| 5) MB Aldrin | 5.176 | 0.000 | 1059516 | 0 | 0.488 | N.D. # |
| 6) B beta-BHC | 0.000 | 4.075f | 0 | 765.1E6 | N.D. | 328.992 |
| 7) B delta-BHC | 4.709 | 0.000 | 403.0E6 | 0 | 176.785 | N.D. # |
| 8) B Heptachlo... | 5.683f | 4.875 | 8438439 | 5058938 | 4.225 | 1.090 # |
| 9) A Endosulfan I | 6.006 | 0.000 | 1686342 | 0 | 0.951 | N.D. # |
| 10) B trans-Chl... | 5.905 | 0.000 | 2144396 | 0 | 1.127 | N.D. # |
| 11) B cis-Chlor... | 5.944 | 0.000 | 295057 | 0 | 0.147 | N.D. # |
| 13) MA Dieldrin | 6.270 | 0.000 | 2203994 | 0 | 1.140 | N.D. # |
| 14) MA Endrin | 6.502 | 0.000 | 1724144 | 0 | 1.072 | N.D. # |
| 15) B Endosulfa... | 6.683 | 0.000 | 655905 | 0 | 0.358 | N.D. # |
| 16) A 4,4'-DDD | 6.632 | 5.945 | 1904926 | -2103700 | 1.446 | N.D. # |
| 17) MA 4,4'-DDT | 6.913 | 0.000 | 219430 | 0 | 0.180 | N.D. # |
| 20) A Methoxychlor | 0.000 | 6.719f | 0 | 4666903 | N.D. | 2.876 |
| 21) B Endrin ke... | 0.000 | 7.029 | 0 | 11406913 | N.D. | 2.456 |
| 22) Toxaphene-1 | 5.794 | 0.000 | 648256 | 0 | 132.291 | N.D. # |
| 23) Toxaphene-2 | 6.402f | 0.000 | 1483873 | 0 | 84.939 | N.D. # |
| 24) Toxaphene-3 | 7.005 | 0.000 | 435302 | 0 | 10.212 | N.D. # |
| 25) Toxaphene-4 | 7.005f | 0.000 | 435302 | 0 | 13.804 | N.D. # |
| 26) Toxaphene-5 | 7.847 | 7.359 | 4978161 | 109.7E6 | 216.159 | 3475.943 # |

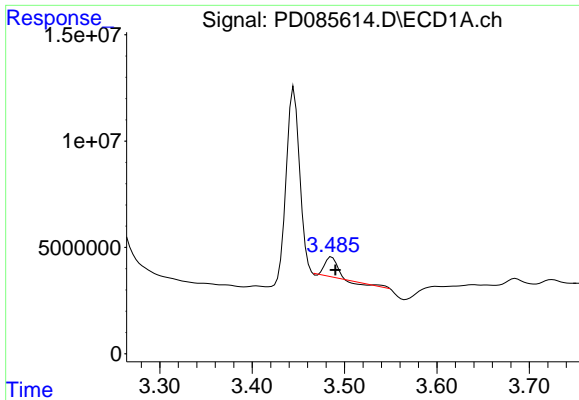
(f)=RT Delta > 1/2 Window (#)=Amounts differ by > 25% (m)=manual int.

Data Path : Z:\pestpcbsrv\HPCHEM1\ECD_D\Data\PD092424\
 Data File : PD085614.D
 Signal(s) : Signal #1: ECD1A.ch Signal #2: ECD2B.ch
 Acq On : 24 Sep 2024 14:07
 Operator : AR\AJ
 Sample : P4016-09
 Misc :
 ALS Vial : 18 Sample Multiplier: 1

Integration File signal 1: autoint1.e
 Integration File signal 2: autoint2.e
 Quant Time: Sep 25 05:15:46 2024
 Quant Method : Z:\pestpcbsrv\HPCHEM1\ECD_D\Method\PD091924CLP.M
 Quant Title : GC Extractables
 QLast Update : Fri Sep 20 05:48:22 2024
 Response via : Initial Calibration
 Integrator: ChemStation

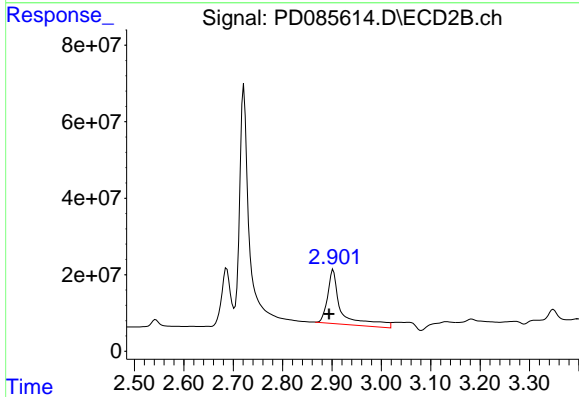
Volume Inj. : 1 µl
 Signal #1 Phase : ZB-MR1 Signal #2 Phase: ZB-MR2
 Signal #1 Info : 30M x 0.32mm x0.5 Signal #2 Info : 30M x 0.32mm x 0.25µm



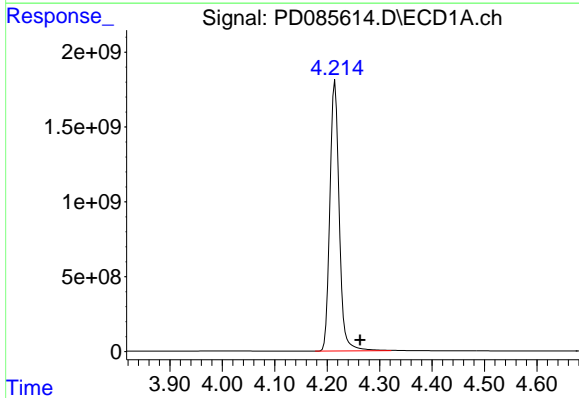


#1 Tetrachloro-m-xylene
 R.T.: 3.486 min
 Delta R.T.: -0.004 min
 Response: 7178543
 Conc: 5.93 ng/ml

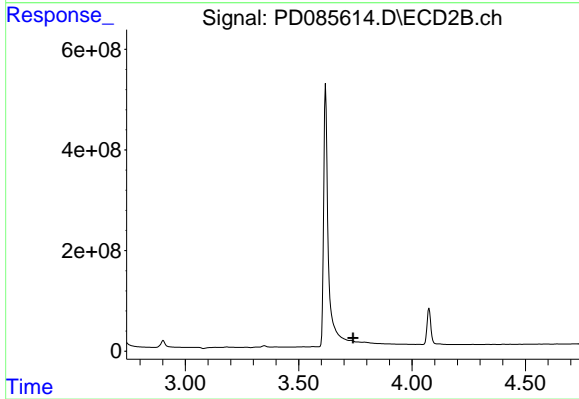
Instrument :
 ECD_D
 ClientSampleId :
 DCVW0



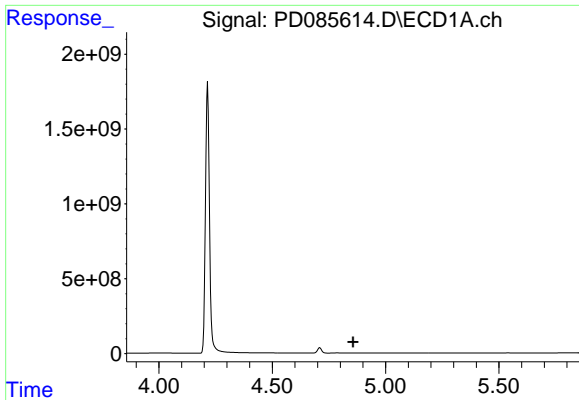
#1 Tetrachloro-m-xylene
 R.T.: 2.902 min
 Delta R.T.: 0.009 min
 Response: 270704678
 Conc: 71.62 ng/ml



#3 gamma-BHC (Lindane)
 R.T.: 4.215 min
 Delta R.T.: -0.047 min
 Response: 18752092603
 Conc: 7495.34 ng/ml



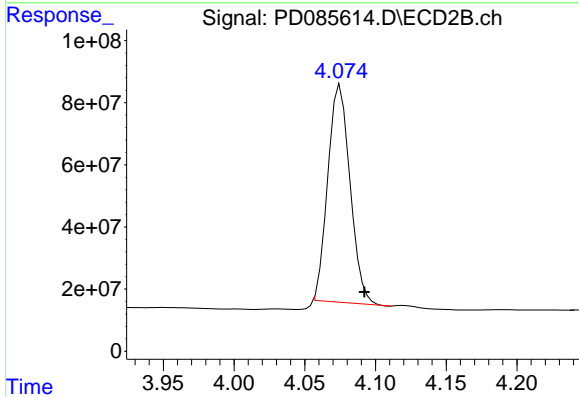
#3 gamma-BHC (Lindane)
 R.T.: 0.000 min
 Exp R.T.: 3.739 min
 Response: 0
 Conc: N.D.



#4 Heptachlor

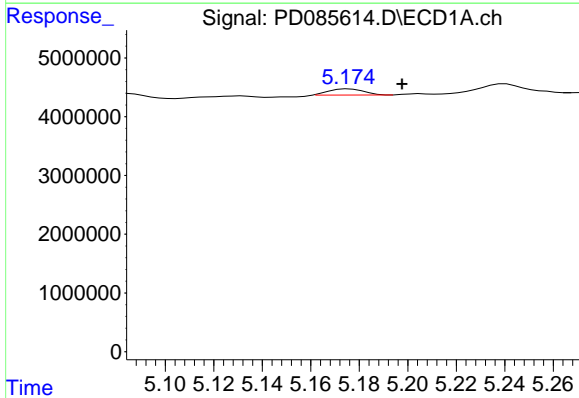
R.T.: 0.000 min
 Exp R.T.: 4.857 min
 Response: 0
 Conc: N.D.

Instrument :
 ECD_D
 ClientSampleId :
 DCVW0



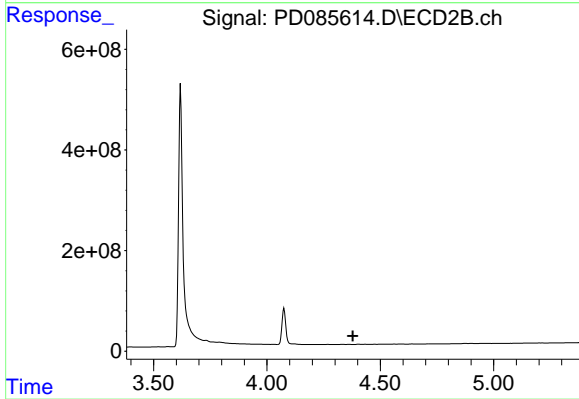
#4 Heptachlor

R.T.: 4.075 min
 Delta R.T.: -0.017 min
 Response: 765075636
 Conc: 161.18 ng/ml



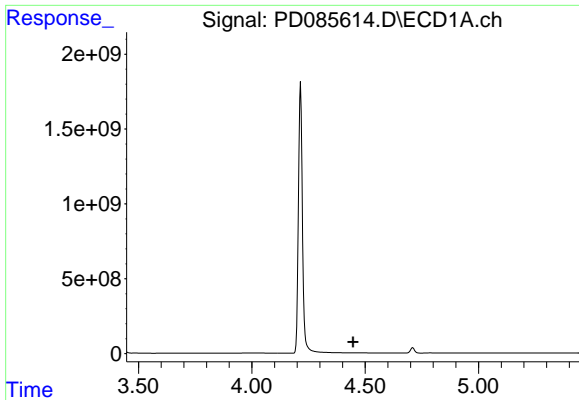
#5 Aldrin

R.T.: 5.176 min
 Delta R.T.: -0.022 min
 Response: 1059516
 Conc: 0.49 ng/ml



#5 Aldrin

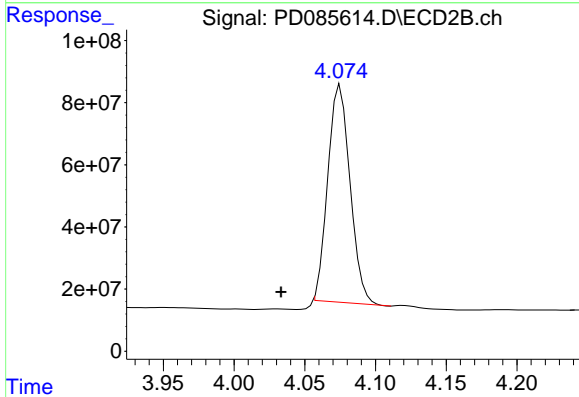
R.T.: 0.000 min
 Exp R.T.: 4.379 min
 Response: 0
 Conc: N.D.



#6 beta-BHC

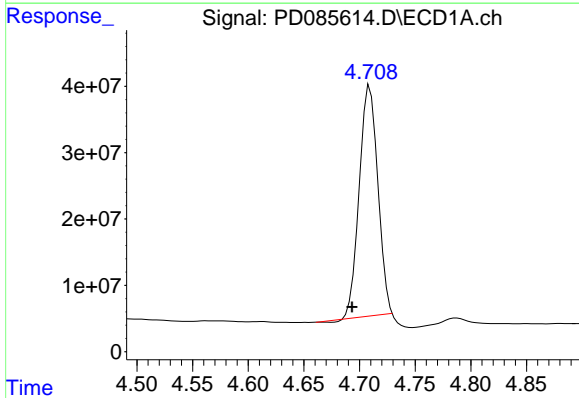
R.T.: 0.000 min
 Exp R.T.: 4.447 min
 Response: 0
 Conc: N.D.

Instrument :
 ECD_D
 ClientSampleId :
 DCVW0



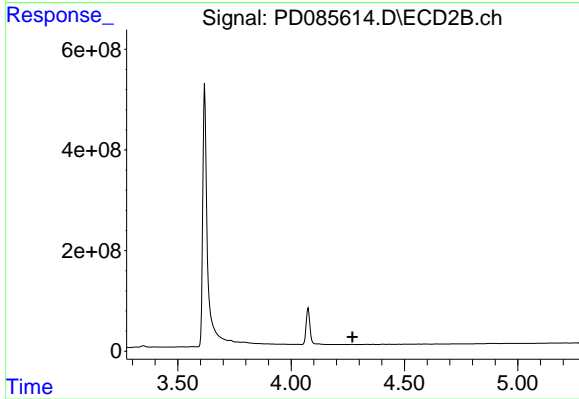
#6 beta-BHC

R.T.: 4.075 min
 Delta R.T.: 0.042 min
 Response: 765075636
 Conc: 328.99 ng/ml



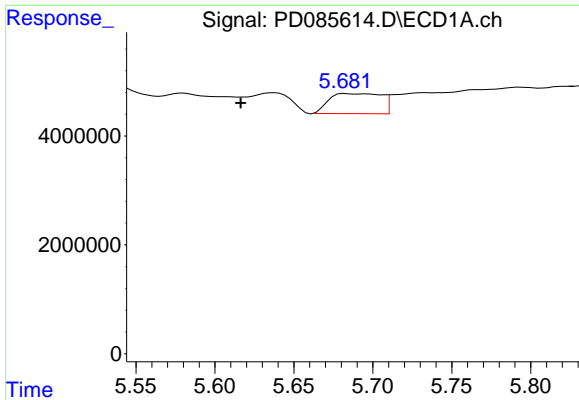
#7 delta-BHC

R.T.: 4.709 min
 Delta R.T.: 0.016 min
 Response: 403001152
 Conc: 176.79 ng/ml



#7 delta-BHC

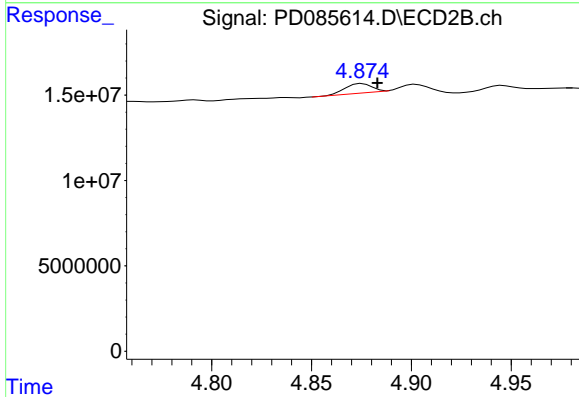
R.T.: 0.000 min
 Exp R.T.: 4.271 min
 Response: 0
 Conc: N.D.



#8 Heptachlor epoxide

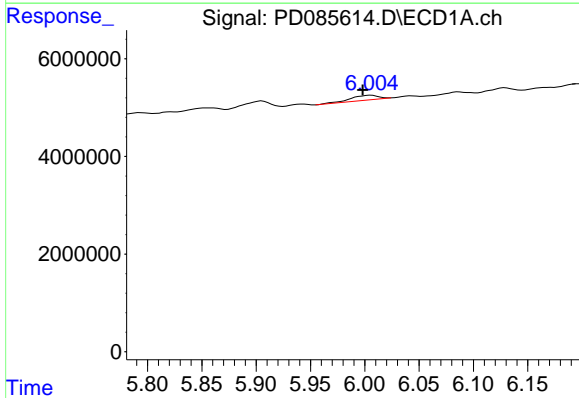
R.T.: 5.683 min
 Delta R.T.: 0.067 min
 Response: 8438439
 Conc: 4.22 ng/ml

Instrument :
 ECD_D
 ClientSampleId :
 DCVW0



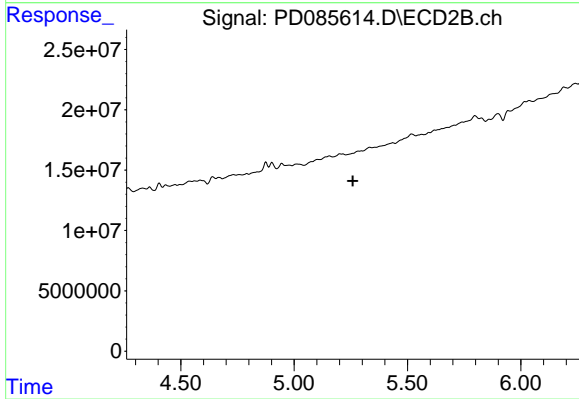
#8 Heptachlor epoxide

R.T.: 4.875 min
 Delta R.T.: -0.008 min
 Response: 5058938
 Conc: 1.09 ng/ml



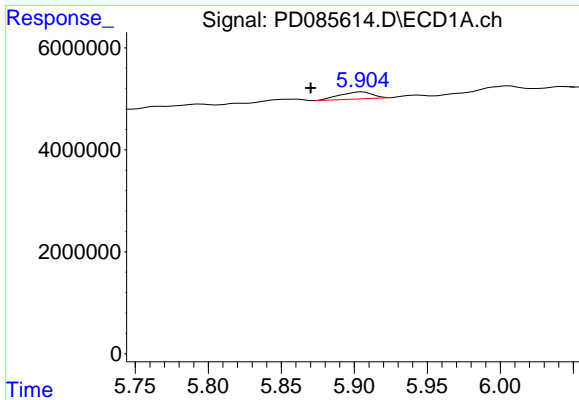
#9 Endosulfan I

R.T.: 6.006 min
 Delta R.T.: 0.007 min
 Response: 1686342
 Conc: 0.95 ng/ml



#9 Endosulfan I

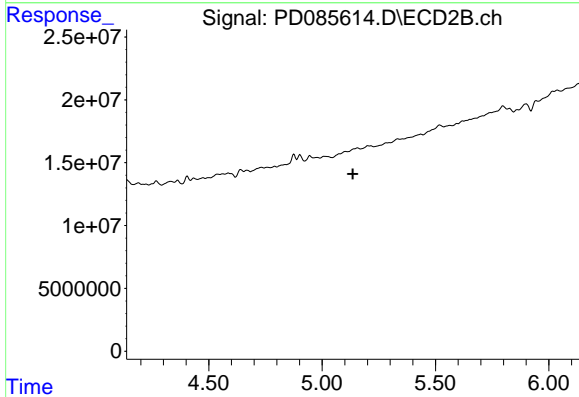
R.T.: 0.000 min
 Exp R.T.: 5.259 min
 Response: 0
 Conc: N.D.



#10 trans-Chlordane

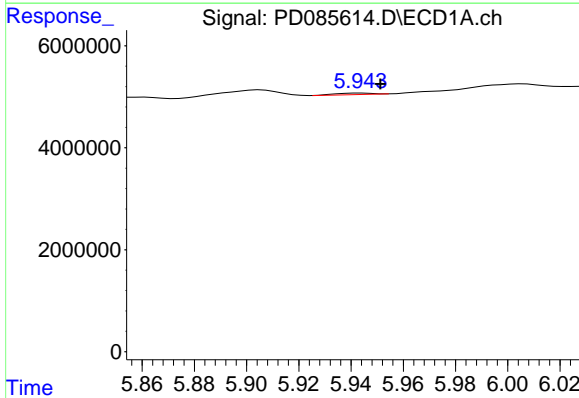
R.T.: 5.905 min
 Delta R.T.: 0.035 min
 Response: 2144396
 Conc: 1.13 ng/ml

Instrument :
 ECD_D
 ClientSampleId :
 DCVW0



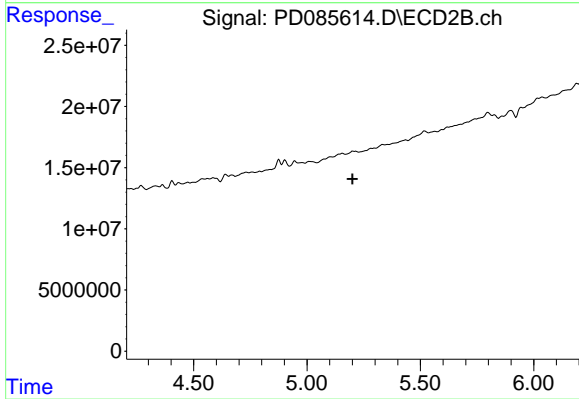
#10 trans-Chlordane

R.T.: 0.000 min
 Exp R.T. : 5.136 min
 Response: 0
 Conc: N.D.



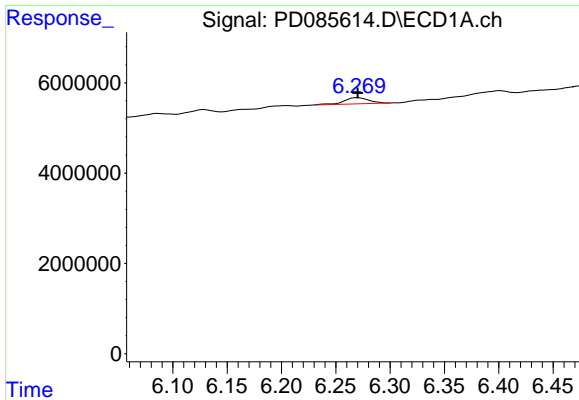
#11 cis-Chlordane

R.T.: 5.944 min
 Delta R.T.: -0.008 min
 Response: 295057
 Conc: 0.15 ng/ml



#11 cis-Chlordane

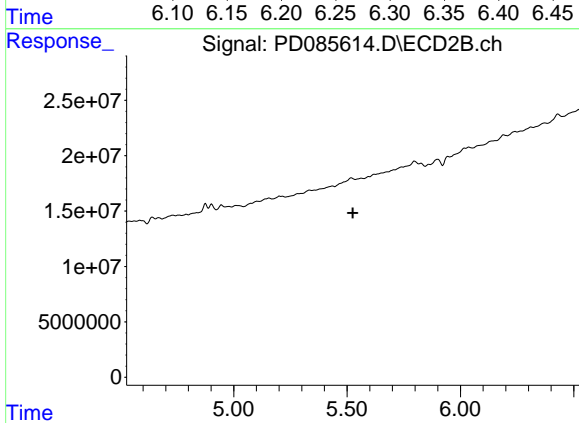
R.T.: 0.000 min
 Exp R.T. : 5.201 min
 Response: 0
 Conc: N.D.



#13 Dieldrin

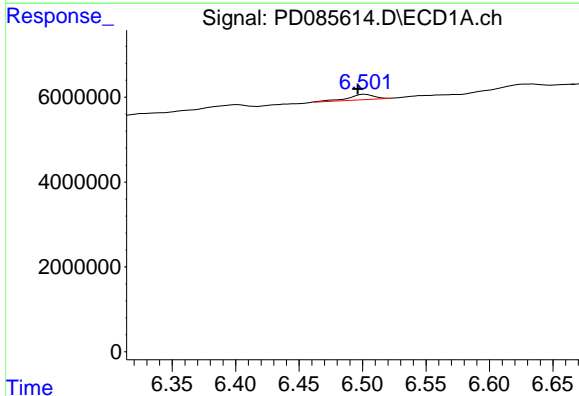
R.T.: 6.270 min
 Delta R.T.: 0.000 min
 Response: 2203994
 Conc: 1.14 ng/ml

Instrument :
 ECD_D
 ClientSampleId :
 DCVW0



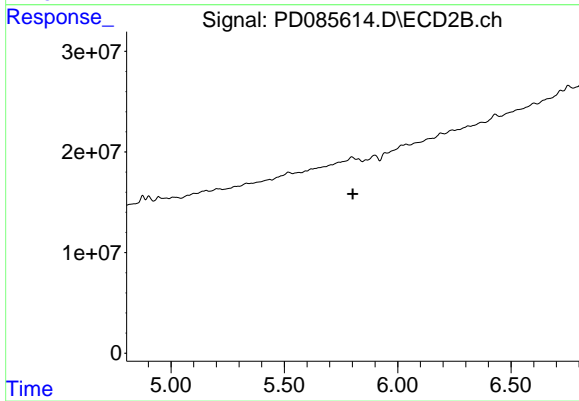
#13 Dieldrin

R.T.: 0.000 min
 Exp R.T. : 5.525 min
 Response: 0
 Conc: N.D.



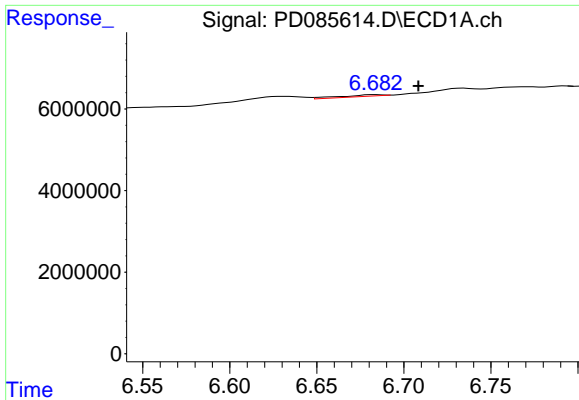
#14 Endrin

R.T.: 6.502 min
 Delta R.T.: 0.006 min
 Response: 1724144
 Conc: 1.07 ng/ml



#14 Endrin

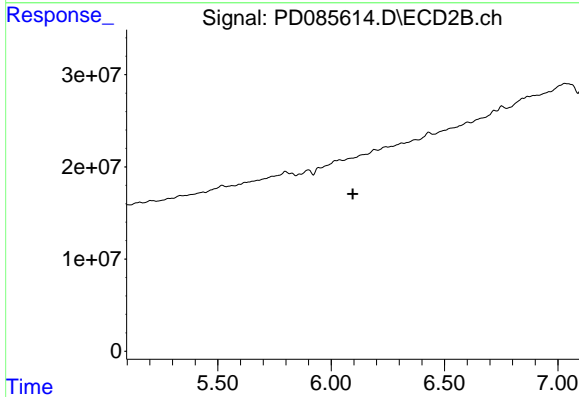
R.T.: 0.000 min
 Exp R.T. : 5.802 min
 Response: 0
 Conc: N.D.



#15 Endosulfan II

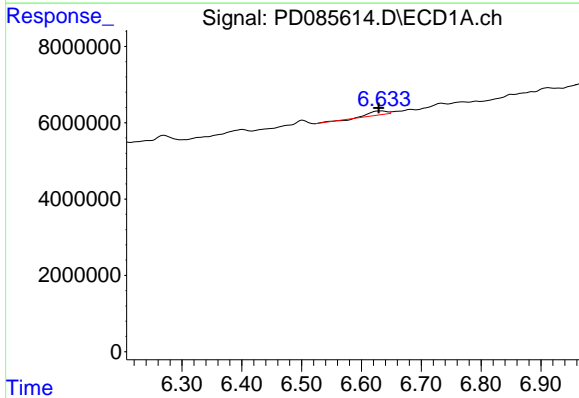
R.T.: 6.683 min
 Delta R.T.: -0.025 min
 Response: 655905
 Conc: 0.36 ng/ml

Instrument :
 ECD_D
 ClientSampleId :
 DCVW0



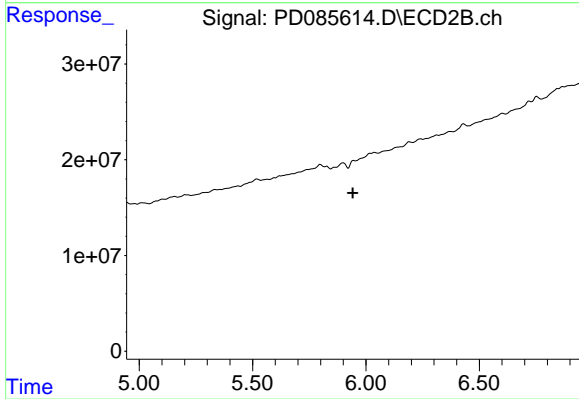
#15 Endosulfan II

R.T.: 0.000 min
 Exp R.T. : 6.095 min
 Response: 0
 Conc: N.D.



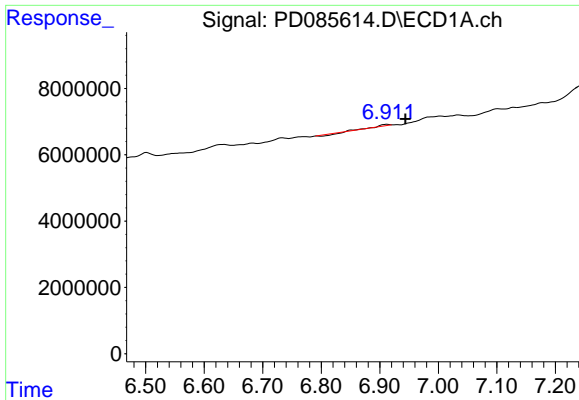
#16 4,4'-DDD

R.T.: 6.632 min
 Delta R.T.: 0.003 min
 Response: 1904926
 Conc: 1.45 ng/ml



#16 4,4'-DDD

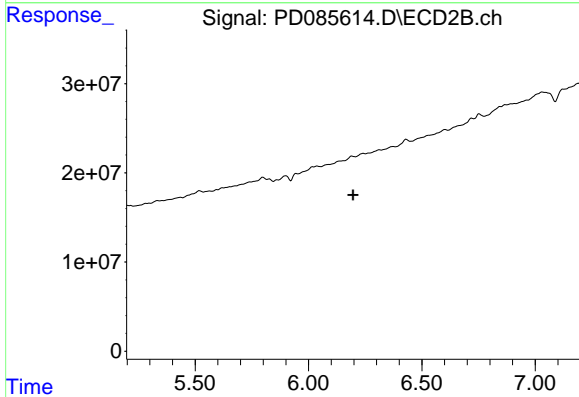
R.T.: 5.945 min
 Delta R.T.: 0.002 min
 Response: -2103700
 Conc: N.D.



#17 4,4'-DDT

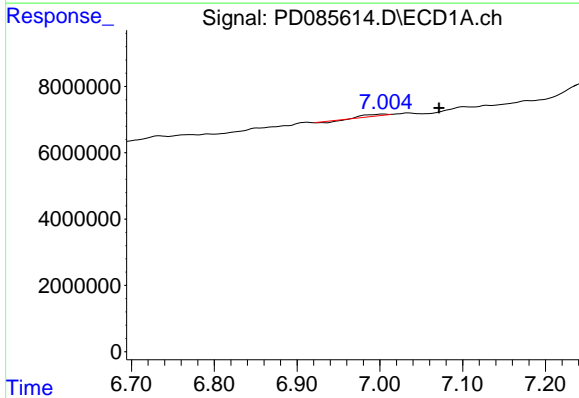
R.T.: 6.913 min
 Delta R.T.: -0.031 min
 Response: 219430
 Conc: 0.18 ng/ml

Instrument :
 ECD_D
 ClientSampleId :
 DCVW0



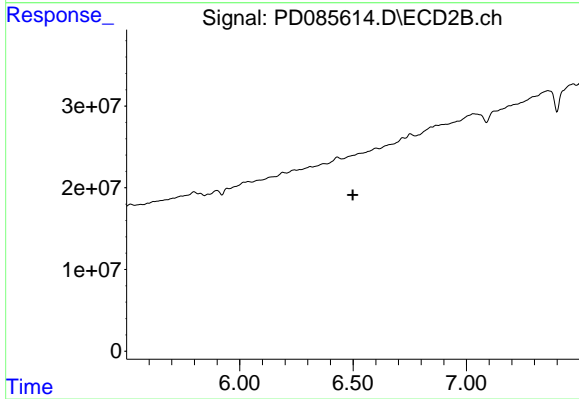
#17 4,4'-DDT

R.T.: 0.000 min
 Exp R.T. : 6.197 min
 Response: 0
 Conc: N.D.



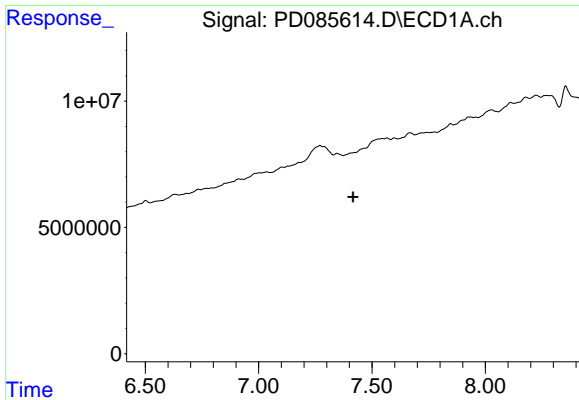
#19 Endosulfan Sulfate

R.T.: 7.005 min
 Delta R.T.: -0.066 min
 Response: 435302
 Conc: 0.29 ng/ml



#19 Endosulfan Sulfate

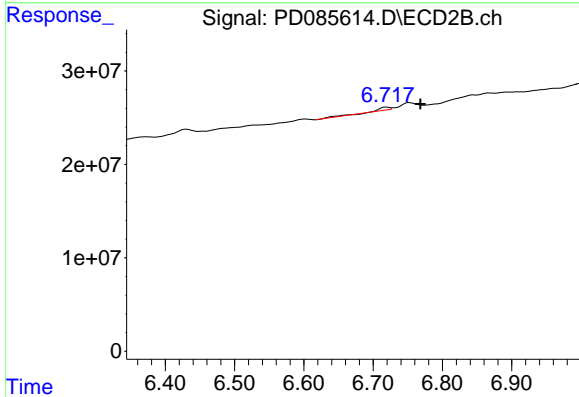
R.T.: 6.430 min
 Delta R.T.: -0.068 min
 Response: -1330687
 Conc: N.D.



#20 Methoxychlor

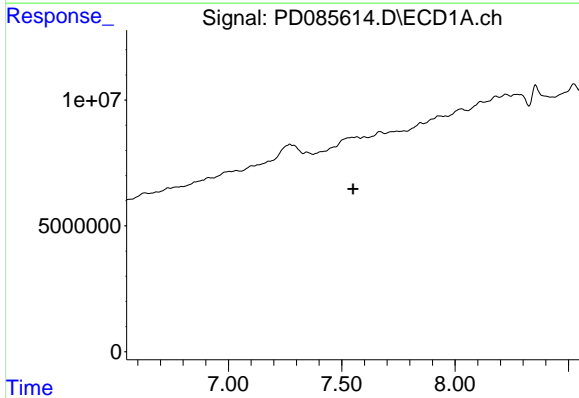
R.T.: 0.000 min
 Exp R.T.: 7.416 min
 Response: 0
 Conc: N.D.

Instrument :
 ECD_D
 ClientSampleId :
 DCVW0



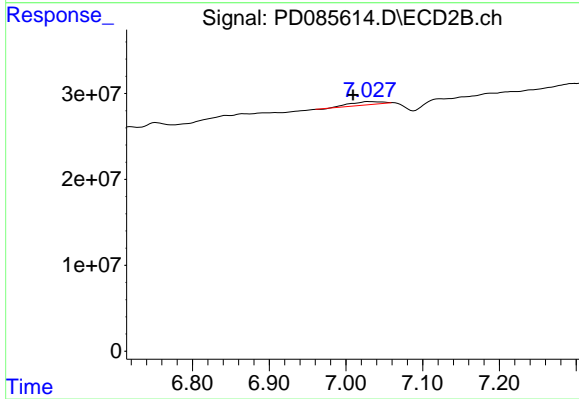
#20 Methoxychlor

R.T.: 6.719 min
 Delta R.T.: -0.050 min
 Response: 4666903
 Conc: 2.88 ng/ml



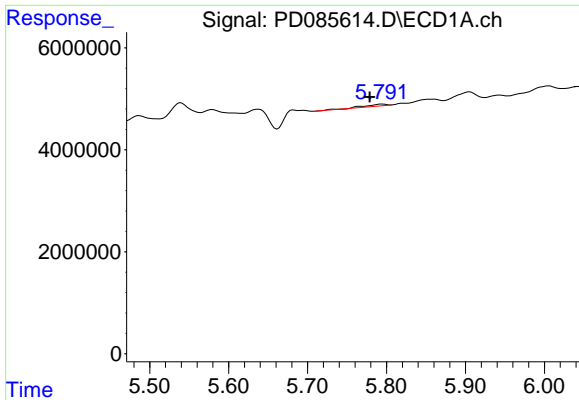
#21 Endrin ketone

R.T.: 0.000 min
 Exp R.T.: 7.550 min
 Response: 0
 Conc: N.D.



#21 Endrin ketone

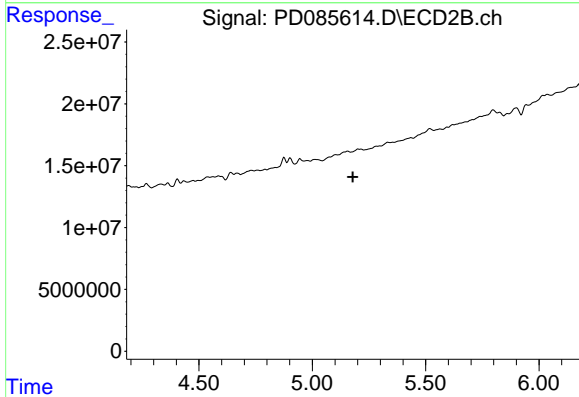
R.T.: 7.029 min
 Delta R.T.: 0.020 min
 Response: 11406913
 Conc: 2.46 ng/ml



#22 Toxaphene-1

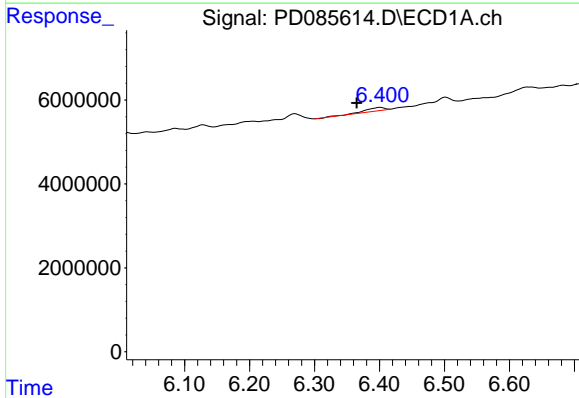
R.T.: 5.794 min
 Delta R.T.: 0.016 min
 Response: 648256
 Conc: 132.29 ng/ml

Instrument :
 ECD_D
 ClientSampleId :
 DCVW0



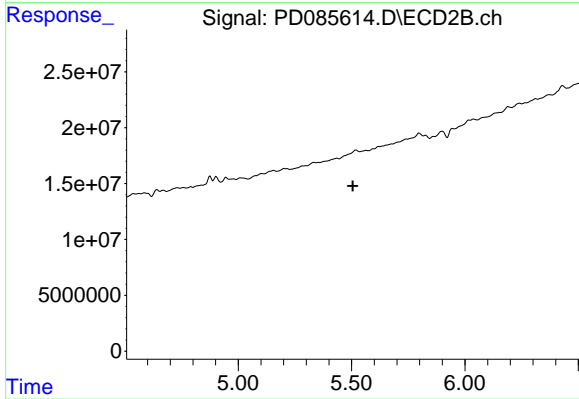
#22 Toxaphene-1

R.T.: 0.000 min
 Exp R.T. : 5.178 min
 Response: 0
 Conc: N.D.



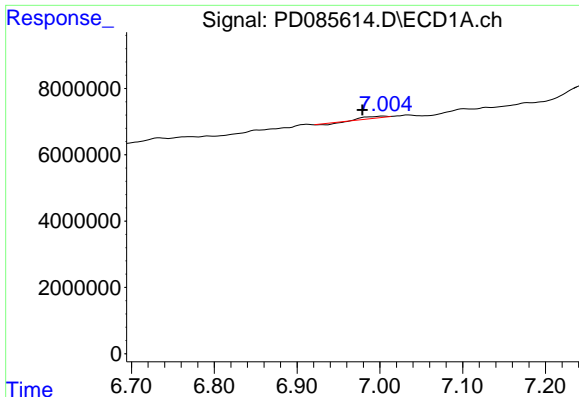
#23 Toxaphene-2

R.T.: 6.402 min
 Delta R.T.: 0.036 min
 Response: 1483873
 Conc: 84.94 ng/ml



#23 Toxaphene-2

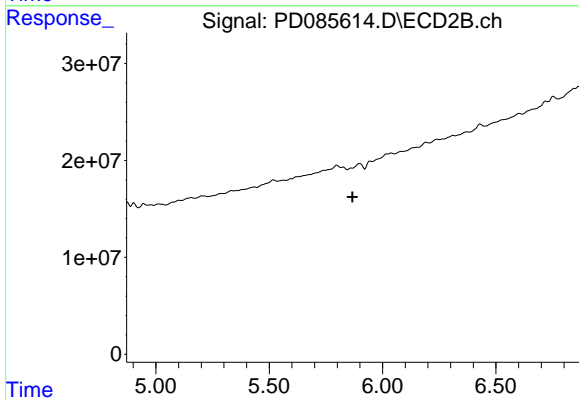
R.T.: 0.000 min
 Exp R.T. : 5.505 min
 Response: 0
 Conc: N.D.



#24 Toxaphene-3

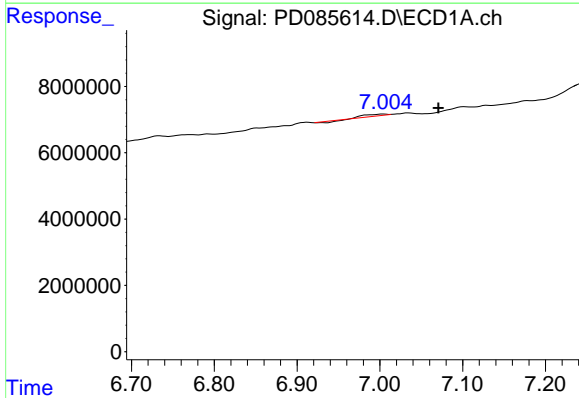
R.T.: 7.005 min
 Delta R.T.: 0.026 min
 Response: 435302
 Conc: 10.21 ng/ml

Instrument :
 ECD_D
 ClientSampleId :
 DCVW0



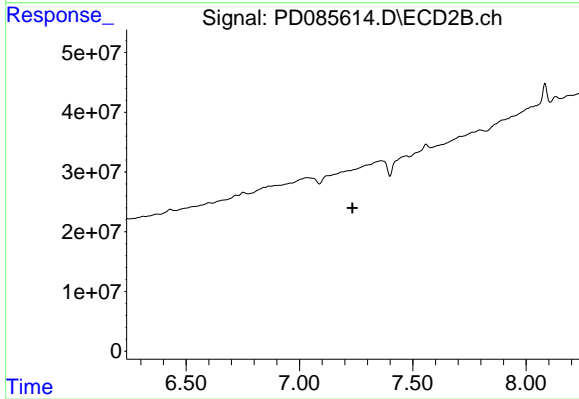
#24 Toxaphene-3

R.T.: 0.000 min
 Exp R.T. : 5.868 min
 Response: 0
 Conc: N.D.



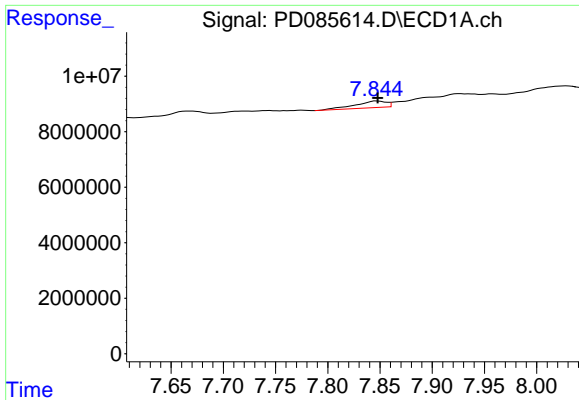
#25 Toxaphene-4

R.T.: 7.005 min
 Delta R.T.: -0.066 min
 Response: 435302
 Conc: 13.80 ng/ml



#25 Toxaphene-4

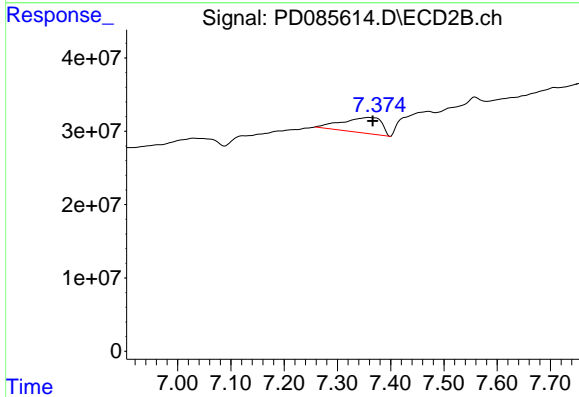
R.T.: 0.000 min
 Exp R.T. : 7.234 min
 Response: 0
 Conc: N.D.



#26 Toxaphene-5

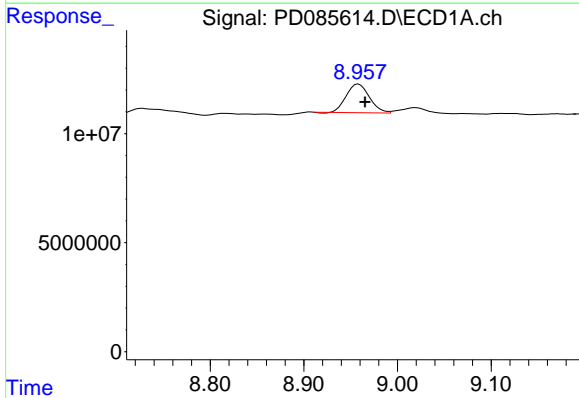
R.T.: 7.847 min
 Delta R.T.: 0.000 min
 Response: 4978161
 Conc: 216.16 ng/ml

Instrument :
 ECD_D
 ClientSampleId :
 DCVW0



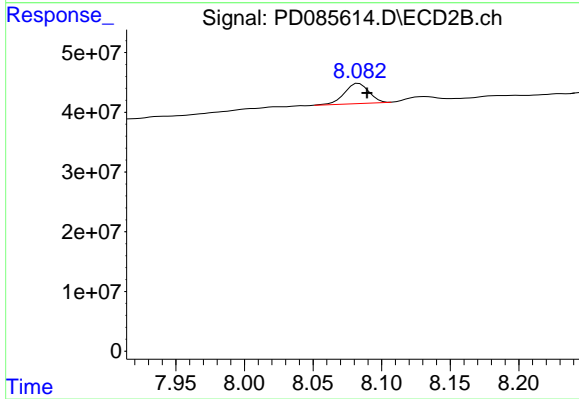
#26 Toxaphene-5

R.T.: 7.359 min
 Delta R.T.: -0.007 min
 Response: 109667845
 Conc: 3475.94 ng/ml



#27 Decachlorobiphenyl

R.T.: 8.958 min
 Delta R.T.: -0.007 min
 Response: 22409846
 Conc: 13.66 ng/ml



#27 Decachlorobiphenyl

R.T.: 8.083 min
 Delta R.T.: -0.006 min
 Response: 42182112
 Conc: 15.78 ng/ml