

Data Path : Z:\pestpcbsrv\HPCHEM1\ECD\_D\Data\PD092520\  
 Data File : PD059330.D  
 Signal(s) : Signal #1: ECD1A.ch Signal #2: ECD2B.ch  
 Acq On : 25 Sep 2020 10:56  
 Operator : DD\AJ  
 Sample : L1955-08  
 Misc :  
 ALS Vial : 11 Sample Multiplier: 1

**Instrument :**  
 ECD\_D  
**Client Sampled :**  
 MDL-WATER-01

**Manual Integrations**  
**APPROVED**  
 Ankita  
 9/29/2020 9:08:08 AM

Integration File signal 1: autoint1.e  
 Integration File signal 2: autoint2.e  
 Quant Time: Sep 26 08:10:01 2020  
 Quant Method : Z:\pestpcbsrv\HPCHEM1\ECD\_D\Method\PD092420CLP.M  
 Quant Title : GC Extractables  
 QLast Update : Fri Sep 25 05:12:00 2020  
 Response via : Initial Calibration  
 Integrator: ChemStation

Volume Inj. : 1 µl  
 Signal #1 Phase : ZB-MR2 Signal #2 Phase: ZB-MR1  
 Signal #1 Info : 30M x 0.32mm x0.2 Signal #2 Info : 30M x 0.32mm x 0.50µm

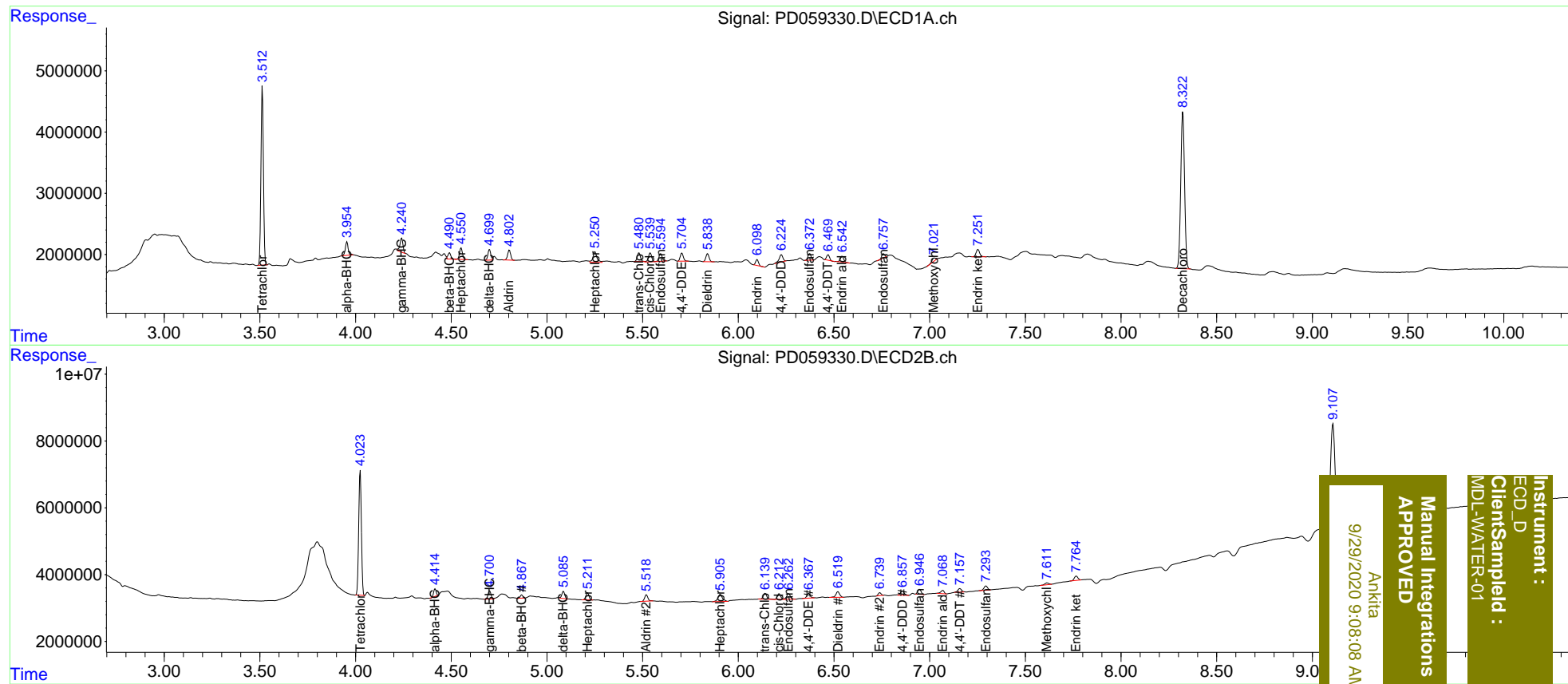
Compound	RT#1	RT#2	Resp#1	Resp#2	ng/ml	ng/ml
-----						
System Monitoring Compounds						
1) SA Tetrachlo...	3.513	4.025	26091187	36291523	20.800	21.567
27) SA Decachlor...	8.323	9.108	35563965	52277378	42.144	45.923
Target Compounds						
2) A alpha-BHC	3.955	4.416	2352633	1960760	1.334	0.801 #
3) MA gamma-BHC...	4.240	4.701	2493786	2654071	1.478m	1.186
4) MA Heptachlor	4.552	5.213	1992020	2331407	1.203	1.076
5) MB Aldrin	4.804	5.520	1816846	2278845	1.124	1.127
6) B beta-BHC	4.491	4.869	1128733	897740	1.463	0.888 #
7) B delta-BHC	4.700	5.087	1785950	2223195	1.080	0.978
8) B Heptachlo...	5.251	5.906	2551549	3513258	1.784	1.867
9) A Endosulfan I	5.595	6.263	1473353	2282447	1.146	1.377
10) B trans-Chl...	5.479	6.140	1632726	2339868	1.156m	1.284
11) B cis-Chlor...	5.540	6.213	1762098	2066663	1.252	1.145
12) B 4,4'-DDE	5.704	6.368	1526793	1814688	1.146m	1.063
13) MA Dieldrin	5.840	6.521	1515086	2345574	1.124	1.321
14) MA Endrin	6.099	6.740	1039591	929060	1.053	0.724 #
15) B Endosulfa...	6.373	6.947	1221569	1827187	1.137	1.281
16) A 4,4'-DDD	6.225	6.857	1626067	1810971	1.565	1.341m
17) MA 4,4'-DDT	6.470	7.157	966262	1457274	0.918	1.311m#
18) B Endrin al...	6.543	7.069	1212967	1200069	1.369	1.017 #
19) B Endosulfa...	6.759	7.295	639119	1632850	0.629	1.121 #
20) A Methoxychlor	7.024	7.614	605973	769915	1.229	1.242
21) B Endrin ke...	7.253	7.766	1568905	1706622	1.457	1.219

(f)=RT Delta > 1/2 Window (#)=Amounts differ by > 25% (m)=manual int.

Data Path : Z:\pestpcbsrv\HPCHEM1\ECD\_D\Data\PD092520\  
 Data File : PD059330.D  
 Signal(s) : Signal #1: ECD1A.ch Signal #2: ECD2B.ch  
 Acq On : 25 Sep 2020 10:56  
 Operator : DD\AJ  
 Sample : L1955-08  
 Misc :  
 ALS Vial : 11 Sample Multiplier: 1

Integration File signal 1: autoint1.e  
 Integration File signal 2: autoint2.e  
 Quant Time: Sep 26 08:10:01 2020  
 Quant Method : Z:\pestpcbsrv\HPCHEM1\ECD\_D\Method\PD092420CLP.M  
 Quant Title : GC Extractables  
 QLast Update : Fri Sep 25 05:12:00 2020  
 Response via : Initial Calibration  
 Integrator: ChemStation

Volume Inj. : 1 µl  
 Signal #1 Phase : ZB-MR2 Signal #2 Phase: ZB-MR1  
 Signal #1 Info : 30M x 0.32mm x0.2 Signal #2 Info : 30M x 0.32mm x 0.50µm



Instrument :  
 ECD\_D  
 Client Sample Id :  
 MDL-WATER-01

Manual Integrations  
 APPROVED  
 Ankita  
 9/29/2020 9:08:08 AM