

Data Path : Z:\pestpcbsrv\HPCHEM1\ECD_D\Data\PD092719\
 Data File : PD055038.D
 Signal(s) : Signal #1: ECD1A.ch Signal #2: ECD2B.ch
 Acq On : 27 Sep 2019 12:36
 Operator : SG\AJ
 Sample : MDL-TOX-W-01
 Misc :
 ALS Vial : 14 Sample Multiplier: 1

Instrument :
 ECD_D
 ClientSampleId :

Integration File signal 1: autoint1.e
 Integration File signal 2: autoint2.e
 Quant Time: Sep 27 13:10:25 2019
 Quant Method : Z:\pestpcbsrv\HPCHEM1\ECD_D\Method\PD092319CLP.M
 Quant Title : GC Extractables
 QLast Update : Tue Sep 24 07:21:19 2019
 Response via : Initial Calibration
 Integrator: ChemStation

Volume Inj. : 1 µl
 Signal #1 Phase : ZB-MR2 Signal #2 Phase: ZB-MR1
 Signal #1 Info : 30M x 0.32mm x0.2 Signal #2 Info : 30M x 0.32mm x 0.50µm

Compound	RT#1	RT#2	Resp#1	Resp#2	ng/ml	ng/ml

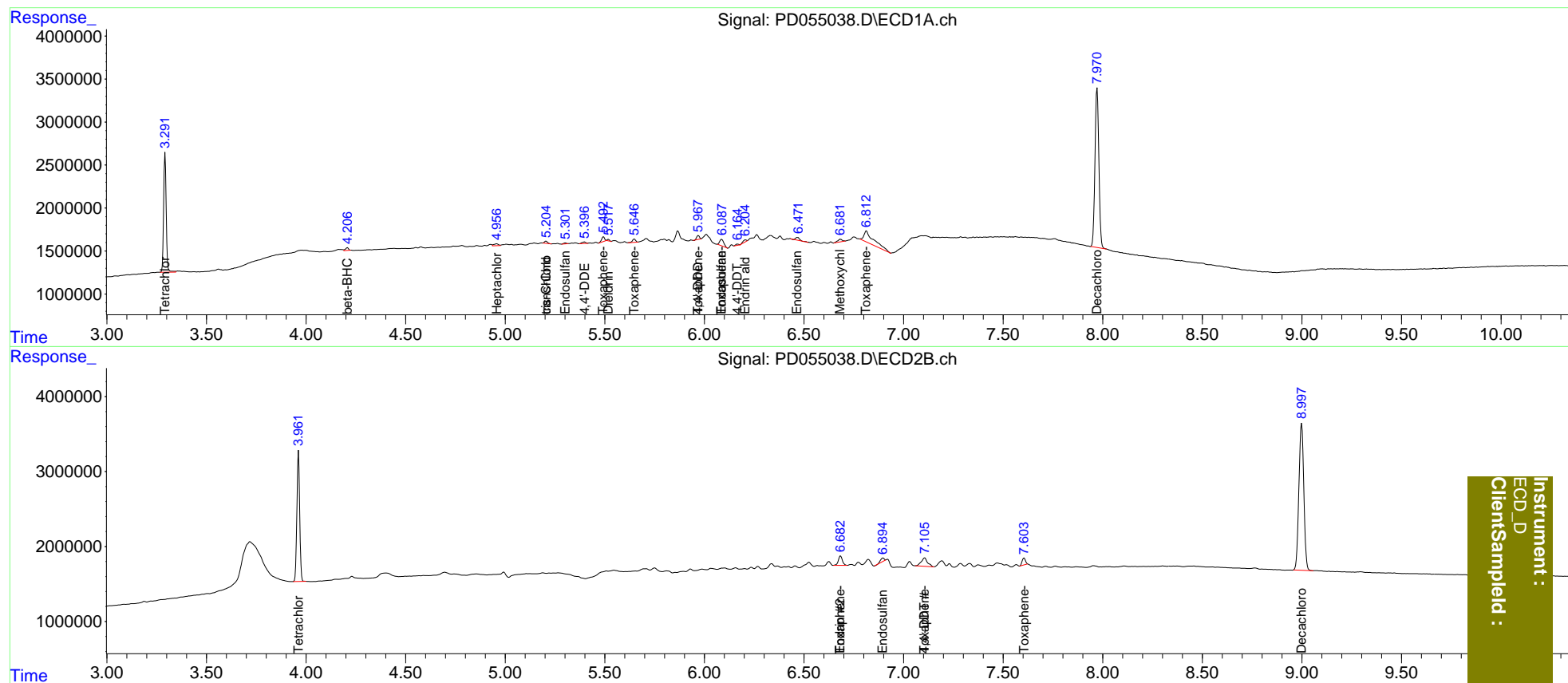
System Monitoring Compounds						
1) SA Tetrachlo...	3.292	3.962	12416648	17127471	16.321	16.690
2) SA Decachlor...	7.971	8.998	25157190	33586467	29.857	28.828
Target Compounds						
6) B beta-BHC	4.208f	0.000	351401	0	0.751	N.D. #
8) B Heptachlo...	4.957	0.000	351950	0	0.384	N.D. #
9) A Endosulfan I	5.303	0.000	104718	0	0.118	N.D. #
10) B trans-Chl...	5.205	0.000	281211	0	0.298	N.D. #
11) B cis-Chlor...	5.205f	0.000	281211	0	0.307	N.D. #
12) B 4,4'-DDE	5.398	0.000	223939	0	0.250	N.D. #
13) MA Dieldrin	5.518	0.000	133772	0	0.136	N.D. #
14) MA Endrin	5.784	6.684	19728	1780270	<MDL	1.616 #
15) B Endosulfa...	6.087	6.896	1103824	572037	1.267	0.450 #
16) A 4,4'-DDD	5.969f	0.000	429201	0	0.592	N.D. #
17) MA 4,4'-DDT	6.165	7.106	128296	2501925	0.192	2.285 #
18) B Endrin al...	6.206	0.000	266858	0	0.367	N.D. #
19) B Endosulfa...	6.466	0.000	466968	0	0.575	N.D. #
20) A Methoxychlor	6.682	0.000	491462	0	1.386	N.D. #
22) Toxaphene-1	5.493	0.000	548966	0	98.130	N.D. #
23) Toxaphene-2	5.648	6.684	410258	1780270	70.788	210.636 #
24) Toxaphene-3	5.969	0.000	429201	0	85.916	N.D. #
25) Toxaphene-4	6.087	7.106	1103824	2501925	72.982	74.290
26) Toxaphene-5	6.813	7.605	4697461	1093136	253.943	66.584 #

(f)=RT Delta > 1/2 Window (#)=Amounts differ by > 25% (m)=manual int.

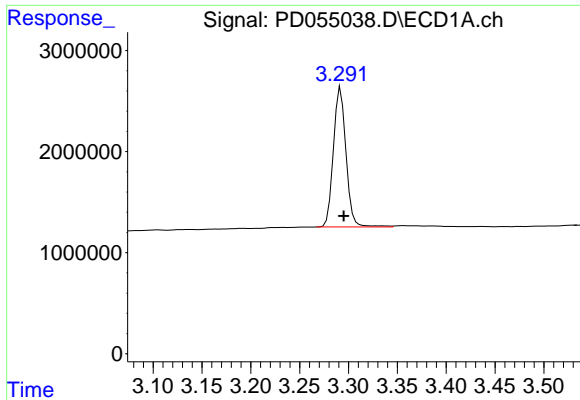
Data Path : Z:\pestpcbsrv\HPCHEM1\ECD_D\Data\PD092719\
 Data File : PD055038.D
 Signal(s) : Signal #1: ECD1A.ch Signal #2: ECD2B.ch
 Acq On : 27 Sep 2019 12:36
 Operator : SG\AJ
 Sample : MDL-TOX-W-01
 Misc :
 ALS Vial : 14 Sample Multiplier: 1

Integration File signal 1: autoint1.e
 Integration File signal 2: autoint2.e
 Quant Time: Sep 27 13:10:25 2019
 Quant Method : Z:\pestpcbsrv\HPCHEM1\ECD_D\Method\PD092319CLP.M
 Quant Title : GC Extractables
 QLast Update : Tue Sep 24 07:21:19 2019
 Response via : Initial Calibration
 Integrator: ChemStation

Volume Inj. : 1 µl
 Signal #1 Phase : ZB-MR2 Signal #2 Phase: ZB-MR1
 Signal #1 Info : 30M x 0.32mm x0.2 Signal #2 Info : 30M x 0.32mm x 0.50µm

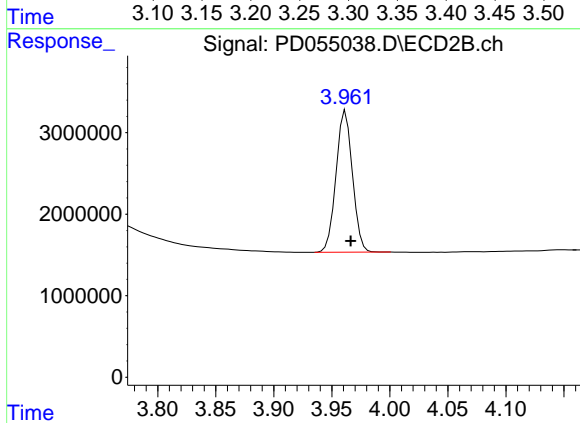


Instrument :
 ECD_D
 ClientSampleId :

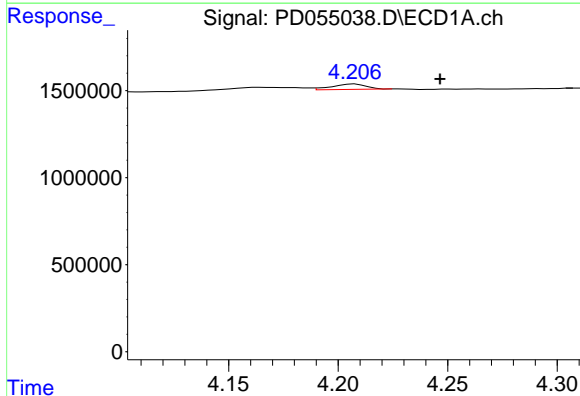


#1 Tetrachloro-m-xylene
 R.T.: 3.292 min
 Delta R.T.: -0.003 min
 Response: 12416648
 Conc: 16.32 ng/ml

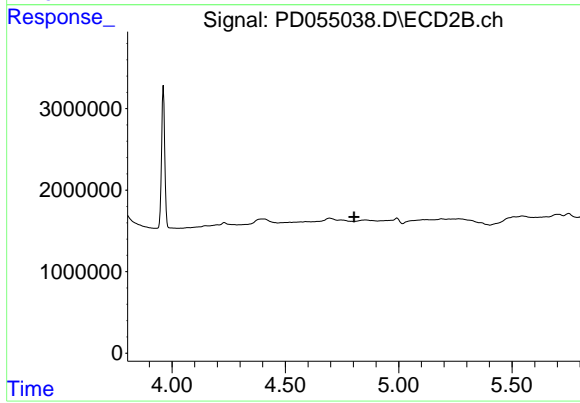
Instrument :
 ECD_D
 ClientSampled :



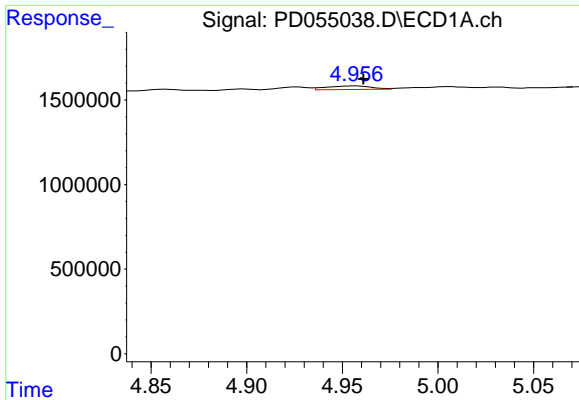
#1 Tetrachloro-m-xylene
 R.T.: 3.962 min
 Delta R.T.: -0.004 min
 Response: 17127471
 Conc: 16.69 ng/ml



#6 beta-BHC
 R.T.: 4.208 min
 Delta R.T.: -0.039 min
 Response: 351401
 Conc: 0.75 ng/ml

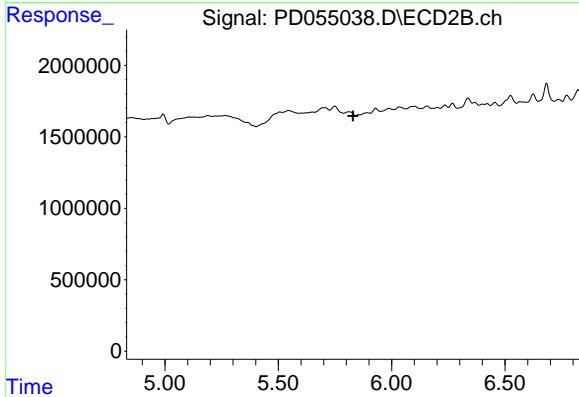


#6 beta-BHC
 R.T.: 0.000 min
 Exp R.T. : 4.804 min
 Response: 0
 Conc: N.D.

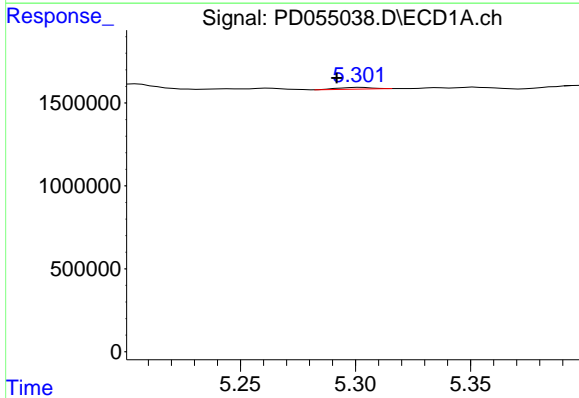


#8 Heptachlor epoxide
 R.T.: 4.957 min
 Delta R.T.: -0.004 min
 Response: 351950
 Conc: 0.38 ng/ml

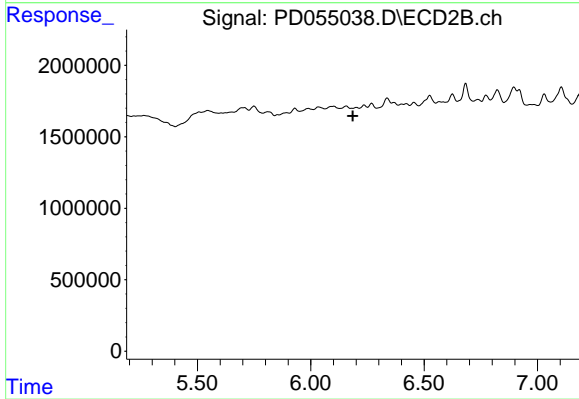
Instrument :
 ECD_D
 ClientSampled :



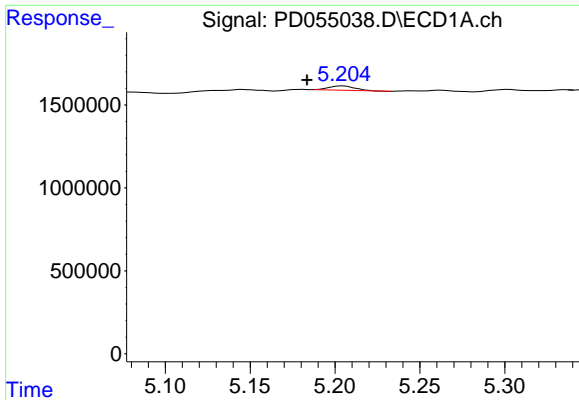
#8 Heptachlor epoxide
 R.T.: 0.000 min
 Exp R.T. : 5.831 min
 Response: 0
 Conc: N.D.



#9 Endosulfan I
 R.T.: 5.303 min
 Delta R.T.: 0.011 min
 Response: 104718
 Conc: 0.12 ng/ml

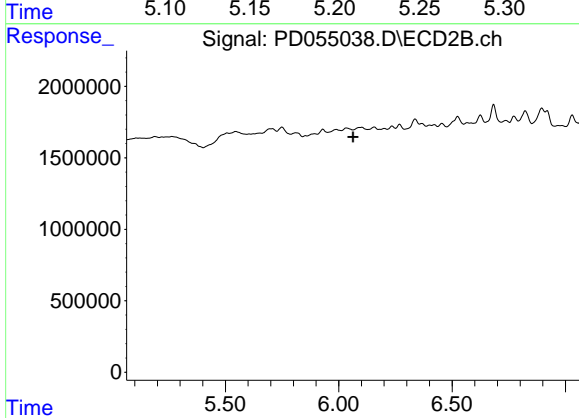


#9 Endosulfan I
 R.T.: 0.000 min
 Exp R.T. : 6.185 min
 Response: 0
 Conc: N.D.

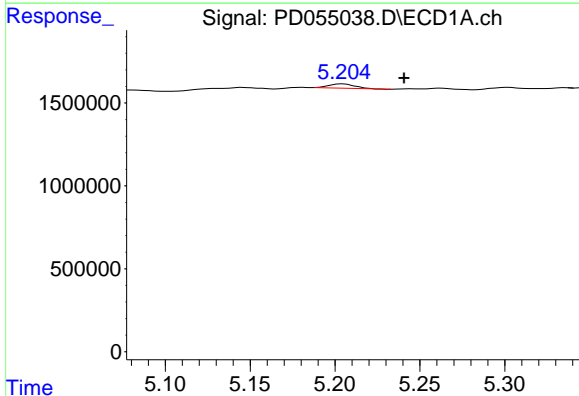


#10 trans-Chlordane
 R.T.: 5.205 min
 Delta R.T.: 0.021 min
 Response: 281211
 Conc: 0.30 ng/ml

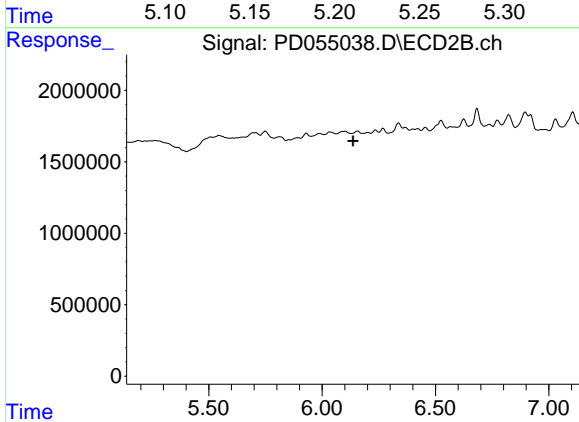
Instrument :
 ECD_D
 ClientSampled :



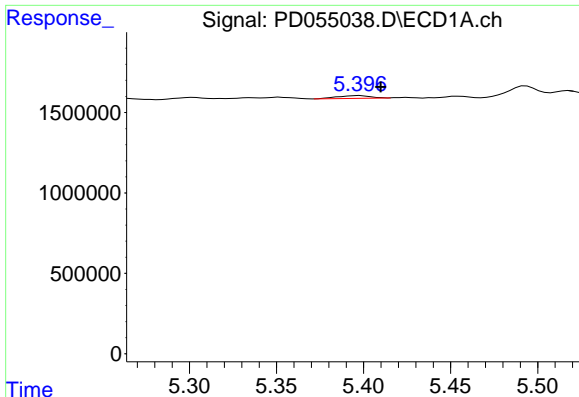
#10 trans-Chlordane
 R.T.: 0.000 min
 Exp R.T. : 6.063 min
 Response: 0
 Conc: N.D.



#11 cis-Chlordane
 R.T.: 5.205 min
 Delta R.T.: -0.036 min
 Response: 281211
 Conc: 0.31 ng/ml



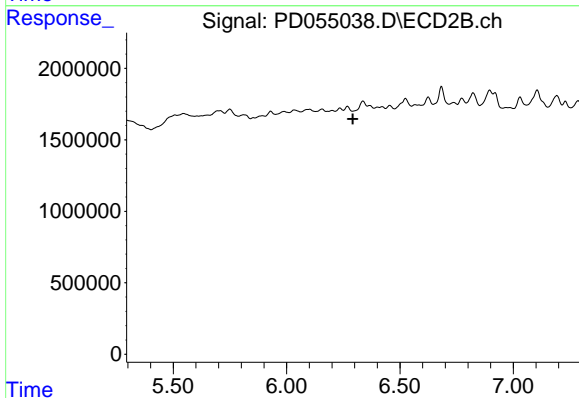
#11 cis-Chlordane
 R.T.: 0.000 min
 Exp R.T. : 6.136 min
 Response: 0
 Conc: N.D.



#12 4,4'-DDE

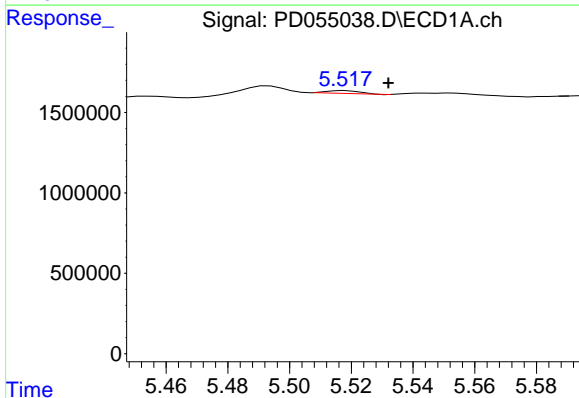
R.T.: 5.398 min
 Delta R.T.: -0.012 min
 Response: 223939
 Conc: 0.25 ng/ml

Instrument :
 ECD_D
 ClientSampleId :



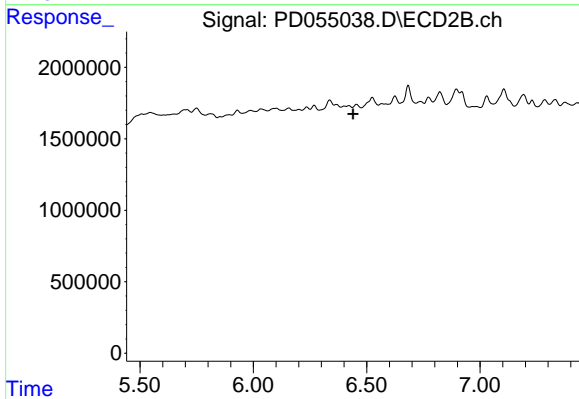
#12 4,4'-DDE

R.T.: 0.000 min
 Exp R.T. : 6.293 min
 Response: 0
 Conc: N.D.



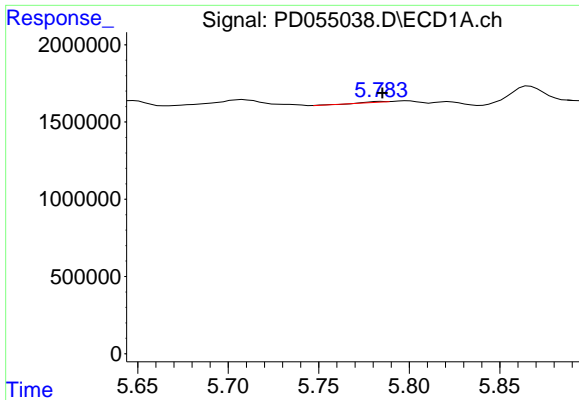
#13 Dieldrin

R.T.: 5.518 min
 Delta R.T.: -0.014 min
 Response: 133772
 Conc: 0.14 ng/ml



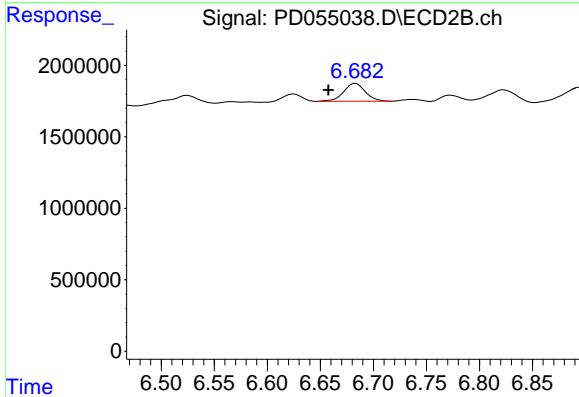
#13 Dieldrin

R.T.: 0.000 min
 Exp R.T. : 6.441 min
 Response: 0
 Conc: N.D.

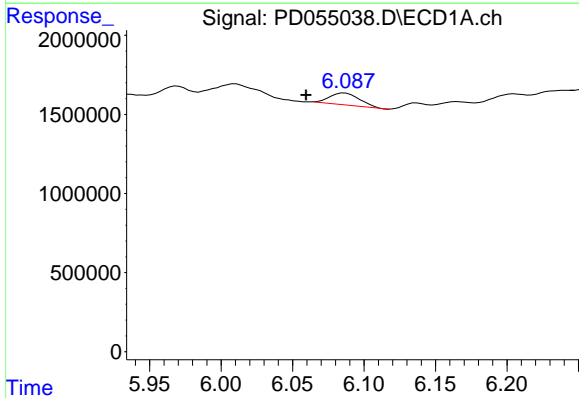


#14 Endrin
 R.T.: 5.784 min
 Delta R.T.: 0.000 min
 Response: 19728
 Conc: N.D.

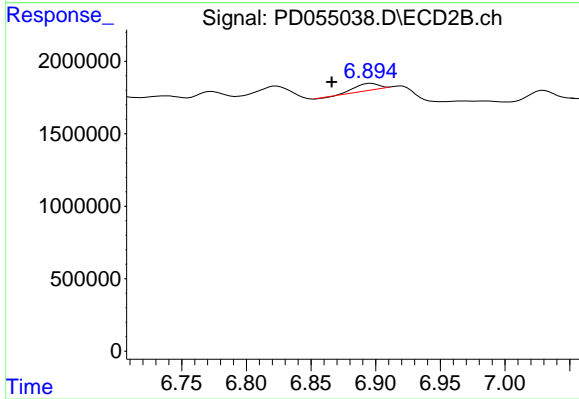
Instrument :
 ECD_D
 ClientSampled :



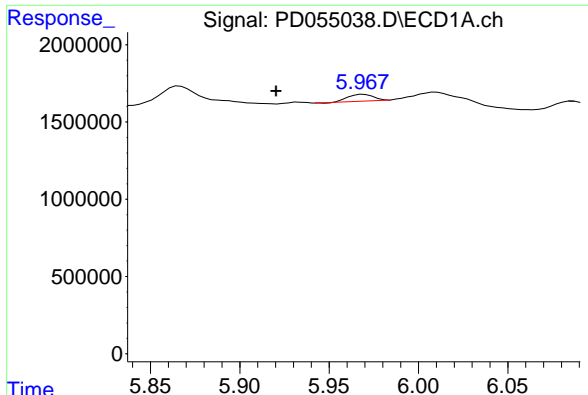
#14 Endrin
 R.T.: 6.684 min
 Delta R.T.: 0.026 min
 Response: 1780270
 Conc: 1.62 ng/ml



#15 Endosulfan II
 R.T.: 6.087 min
 Delta R.T.: 0.027 min
 Response: 1103824
 Conc: 1.27 ng/ml



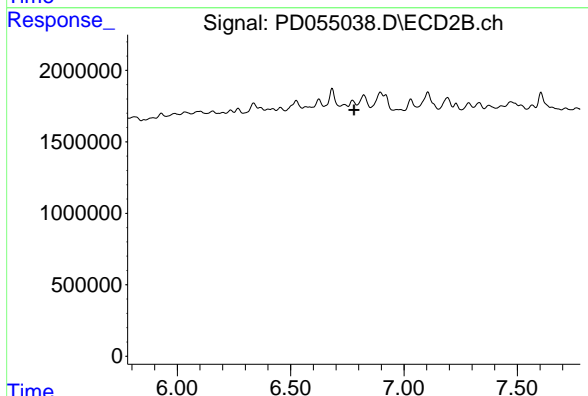
#15 Endosulfan II
 R.T.: 6.896 min
 Delta R.T.: 0.030 min
 Response: 572037
 Conc: 0.45 ng/ml



#16 4,4'-DDD

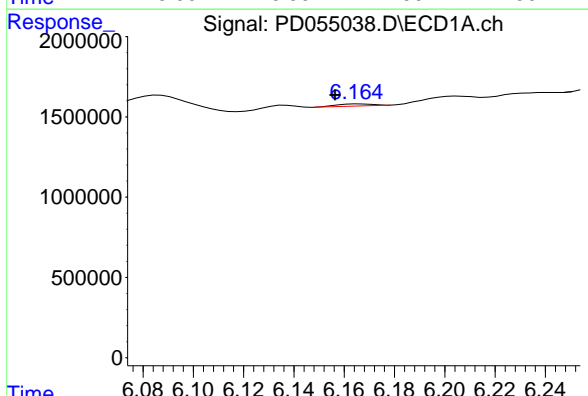
R.T.: 5.969 min
 Delta R.T.: 0.049 min
 Response: 429201
 Conc: 0.59 ng/ml

Instrument :
 ECD_D
 ClientSampleId :



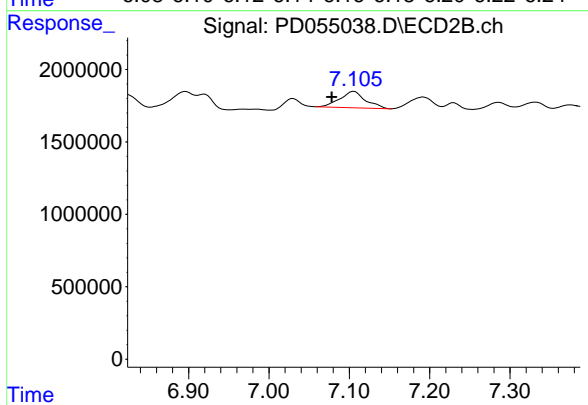
#16 4,4'-DDD

R.T.: 0.000 min
 Exp R.T. : 6.780 min
 Response: 0
 Conc: N.D.



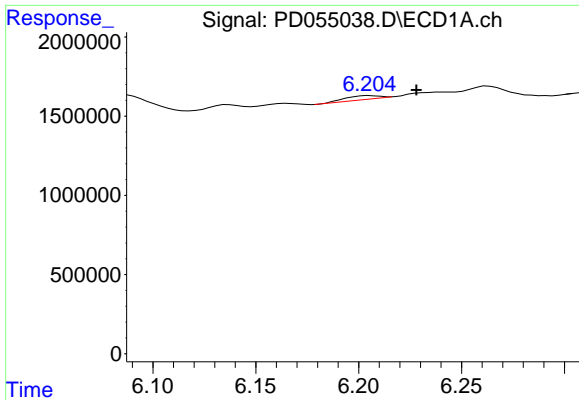
#17 4,4'-DDT

R.T.: 6.165 min
 Delta R.T.: 0.009 min
 Response: 128296
 Conc: 0.19 ng/ml



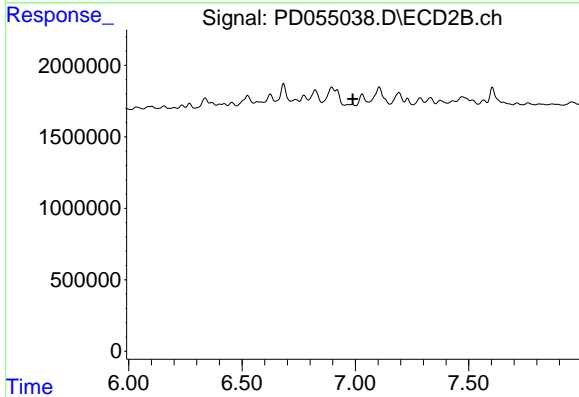
#17 4,4'-DDT

R.T.: 7.106 min
 Delta R.T.: 0.028 min
 Response: 2501925
 Conc: 2.29 ng/ml

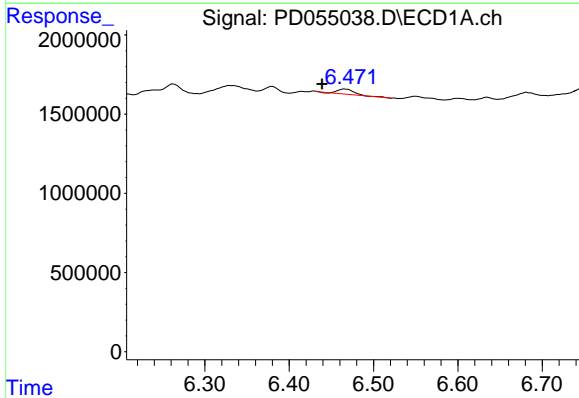


#18 Endrin aldehyde
 R.T.: 6.206 min
 Delta R.T.: -0.022 min
 Response: 266858
 Conc: 0.37 ng/ml

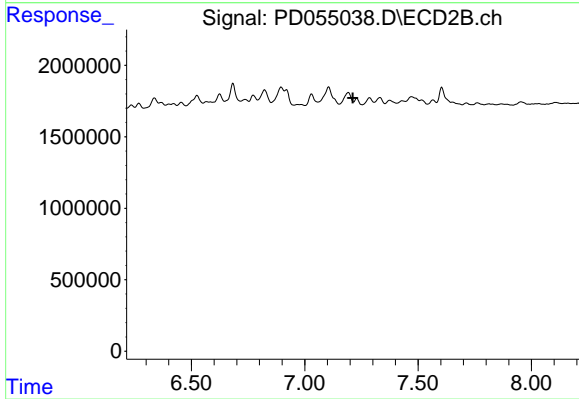
Instrument :
 ECD_D
 ClientSampleId :



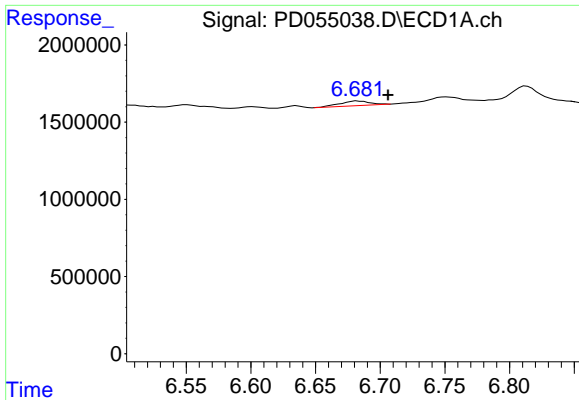
#18 Endrin aldehyde
 R.T.: 0.000 min
 Exp R.T. : 6.989 min
 Response: 0
 Conc: N.D.



#19 Endosulfan Sulfate
 R.T.: 6.466 min
 Delta R.T.: 0.027 min
 Response: 466968
 Conc: 0.58 ng/ml



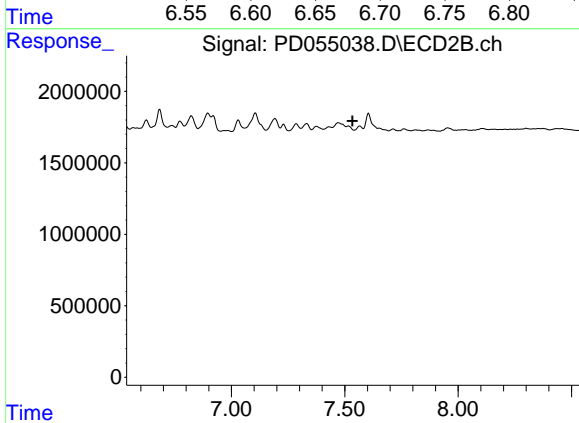
#19 Endosulfan Sulfate
 R.T.: 0.000 min
 Exp R.T. : 7.212 min
 Response: 0
 Conc: N.D.



#20 Methoxychlor

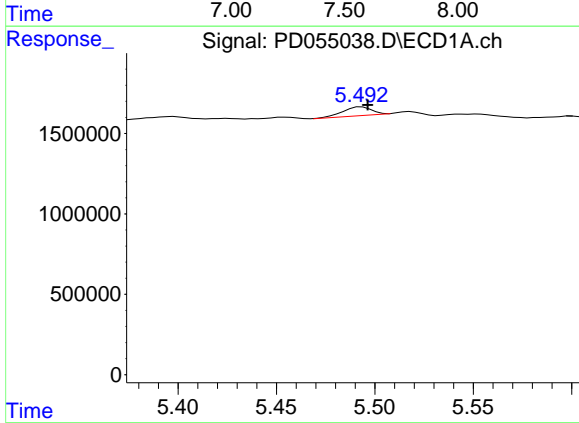
R.T.: 6.682 min
 Delta R.T.: -0.024 min
 Response: 491462
 Conc: 1.39 ng/ml

Instrument :
 ECD_D
 ClientSampleId :



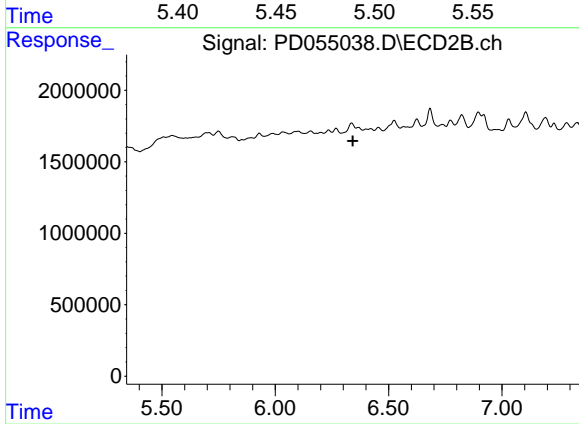
#20 Methoxychlor

R.T.: 0.000 min
 Exp R.T. : 7.535 min
 Response: 0
 Conc: N.D.



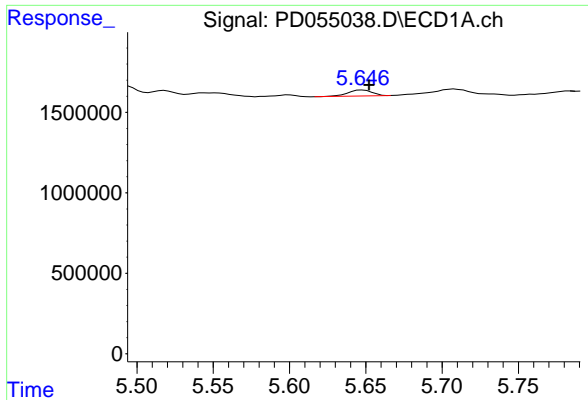
#22 Toxaphene-1

R.T.: 5.493 min
 Delta R.T.: -0.003 min
 Response: 548966
 Conc: 98.13 ng/ml



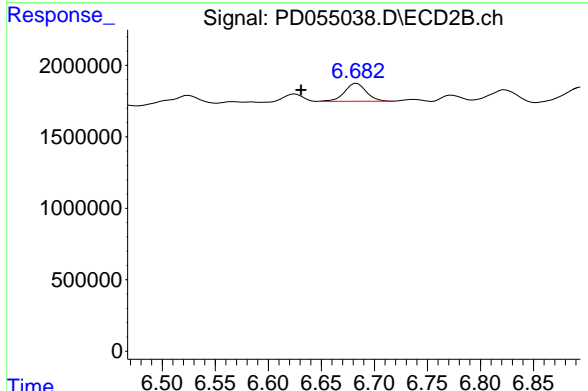
#22 Toxaphene-1

R.T.: 0.000 min
 Exp R.T. : 6.342 min
 Response: 0
 Conc: N.D.

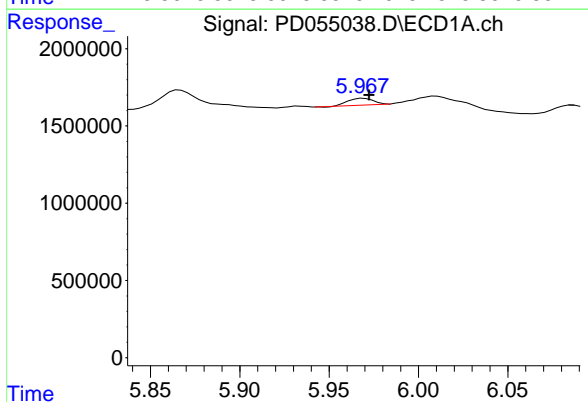


#23 Toxaphene-2
 R.T.: 5.648 min
 Delta R.T.: -0.004 min
 Response: 410258
 Conc: 70.79 ng/ml

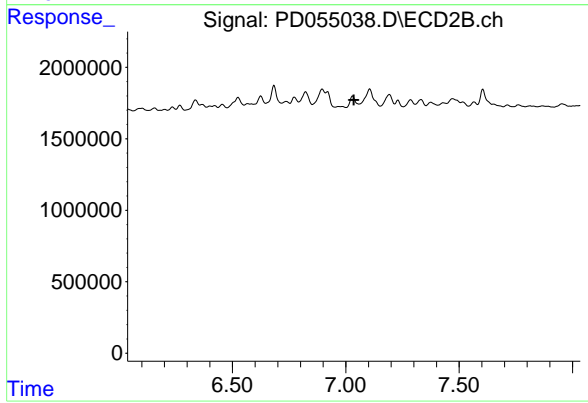
Instrument :
 ECD_D
 ClientSampleId :



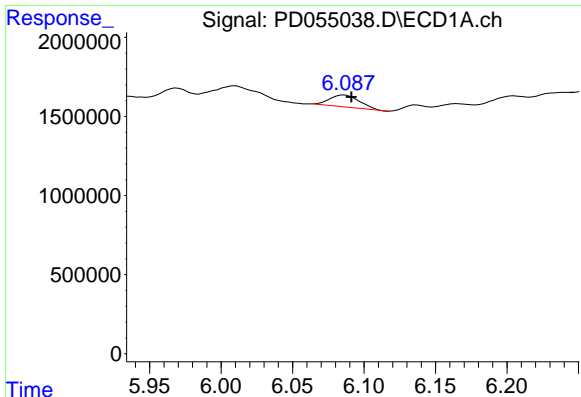
#23 Toxaphene-2
 R.T.: 6.684 min
 Delta R.T.: 0.053 min
 Response: 1780270
 Conc: 210.64 ng/ml



#24 Toxaphene-3
 R.T.: 5.969 min
 Delta R.T.: -0.003 min
 Response: 429201
 Conc: 85.92 ng/ml

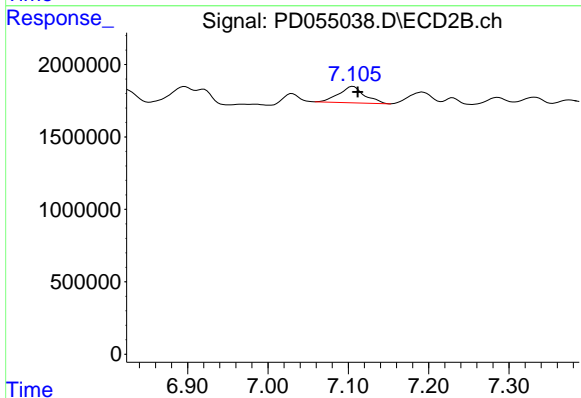


#24 Toxaphene-3
 R.T.: 0.000 min
 Exp R.T.: 7.036 min
 Response: 0
 Conc: N.D.

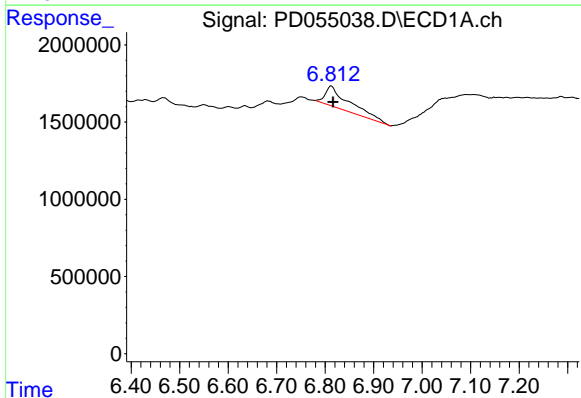


#25 Toxaphene-4
 R.T.: 6.087 min
 Delta R.T.: -0.005 min
 Response: 1103824
 Conc: 72.98 ng/ml

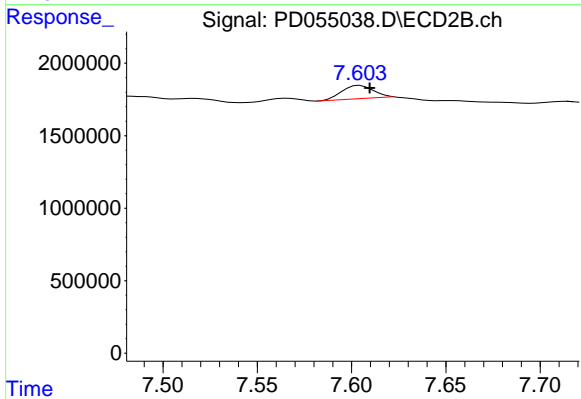
Instrument :
 ECD_D
 ClientSampleId :



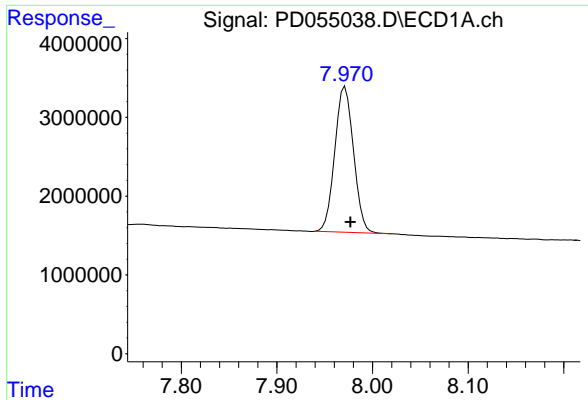
#25 Toxaphene-4
 R.T.: 7.106 min
 Delta R.T.: -0.006 min
 Response: 2501925
 Conc: 74.29 ng/ml



#26 Toxaphene-5
 R.T.: 6.813 min
 Delta R.T.: -0.003 min
 Response: 4697461
 Conc: 253.94 ng/ml



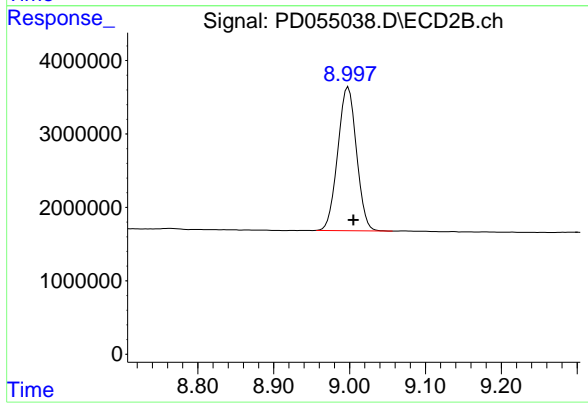
#26 Toxaphene-5
 R.T.: 7.605 min
 Delta R.T.: -0.005 min
 Response: 1093136
 Conc: 66.58 ng/ml



#27 Decachlorobiphenyl

R.T.: 7.971 min
Delta R.T.: -0.006 min
Response: 25157190
Conc: 29.86 ng/ml

Instrument :
ECD_D
ClientSampleId :



#27 Decachlorobiphenyl

R.T.: 8.998 min
Delta R.T.: -0.006 min
Response: 33586467
Conc: 28.83 ng/ml