

Data Path : Z:\pestpcbsrv\HPCHEM1\ECD\_D\Data\PD092721\  
 Data File : PD065891.D  
 Signal(s) : Signal #1: ECD1A.ch Signal #2: ECD2B.ch  
 Acq On : 27 Sep 2021 09:13  
 Operator : AR\AJ  
 Sample : I.BLK  
 Misc :  
 ALS Vial : 2 Sample Multiplier: 1

Instrument :  
 ECD\_D  
 ClientSampleId :  
 I.BLK

Integration File signal 1: autoint1.e  
 Integration File signal 2: autoint2.e  
 Quant Time: Sep 27 15:21:49 2021  
 Quant Method : Z:\pestpcbsrv\HPCHEM1\ECD\_D\Method\PD092221.M  
 Quant Title : GC Extractables  
 QLast Update : Thu Sep 23 12:18:33 2021  
 Response via : Initial Calibration  
 Integrator: ChemStation

Volume Inj. : 2 µl  
 Signal #1 Phase : ZB-MR2 Signal #2 Phase: ZB-MR1  
 Signal #1 Info : 30M x 0.32mm x0.2 Signal #2 Info : 30M x 0.32mm x 0.50µm

| Compound                    | RT#1  | RT#2  | Resp#1   | Resp#2   | ng/ml  | ng/ml  |
|-----------------------------|-------|-------|----------|----------|--------|--------|
| -----                       |       |       |          |          |        |        |
| System Monitoring Compounds |       |       |          |          |        |        |
| 1) SA Tetrachlo...          | 3.492 | 4.011 | 19562214 | 153.4E6  | 26.416 | 26.720 |
| 28) SA Decachlor...         | 8.234 | 9.083 | 30226633 | 95505226 | 22.129 | 24.677 |

Target Compounds

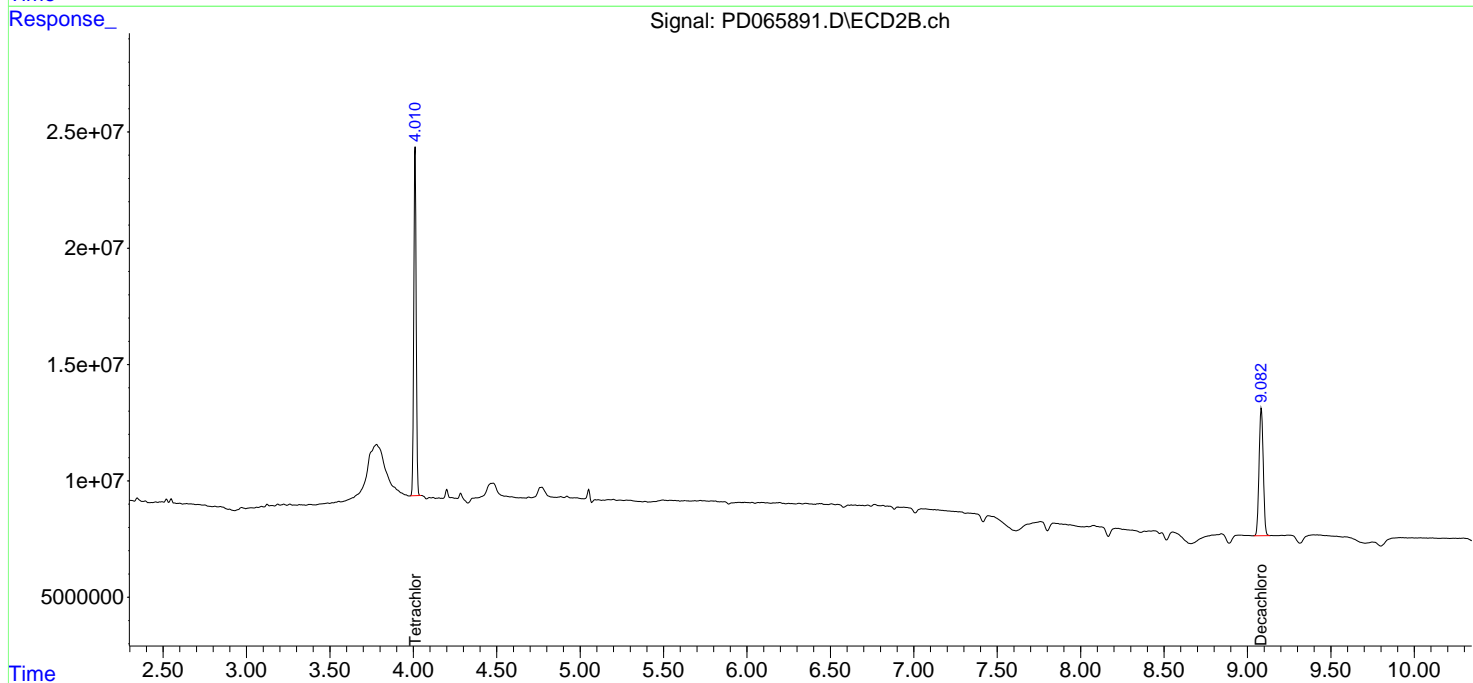
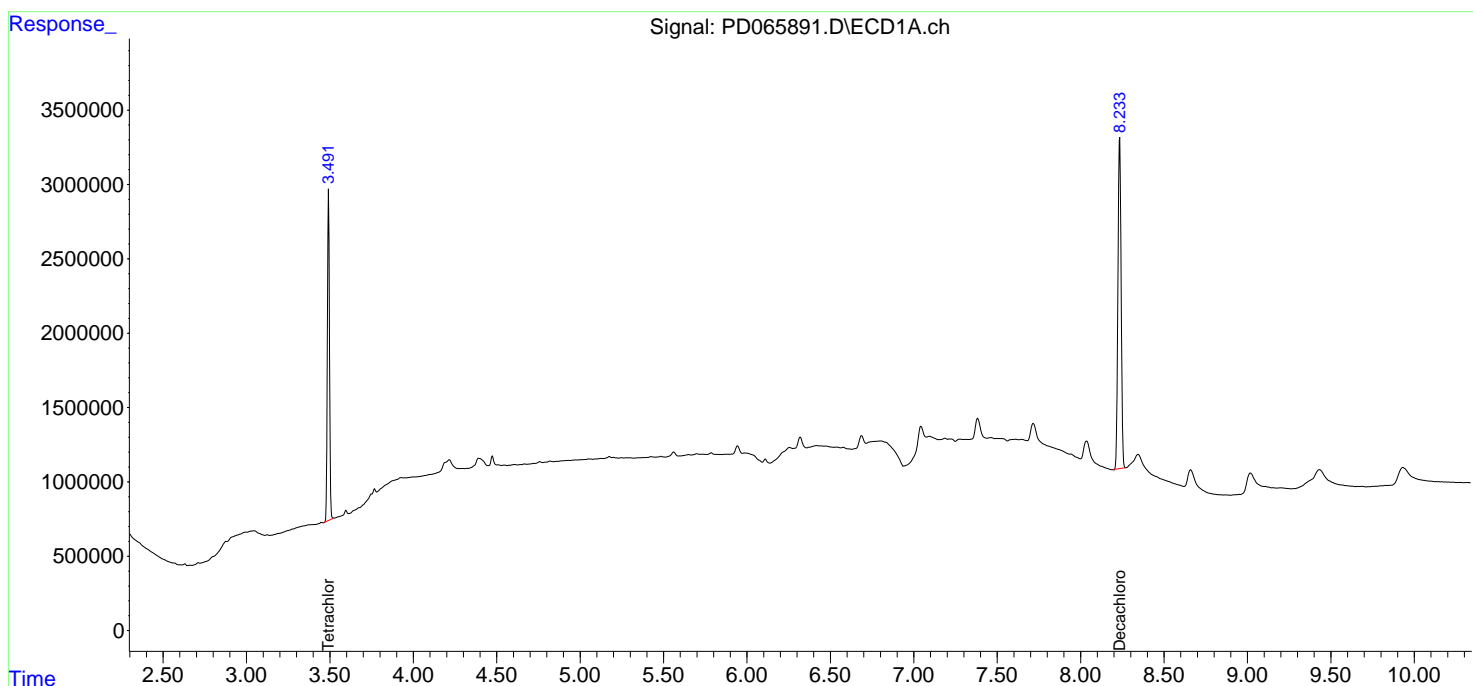
(f)=RT Delta > 1/2 Window (#)=Amounts differ by > 25% (m)=manual int.

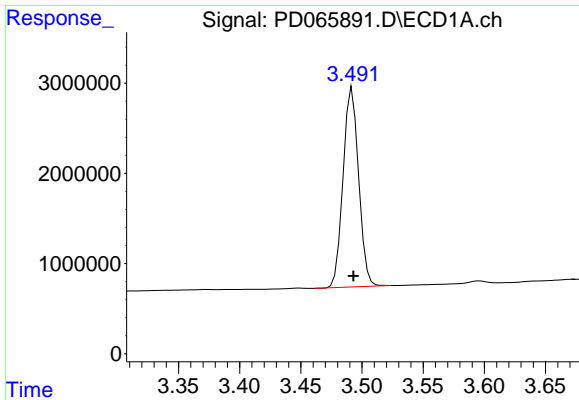
Data Path : Z:\pestpcbsrv\HPCHEM1\ECD\_D\Data\PD092721\  
 Data File : PD065891.D  
 Signal(s) : Signal #1: ECD1A.ch Signal #2: ECD2B.ch  
 Acq On : 27 Sep 2021 09:13  
 Operator : AR\AJ  
 Sample : I.BLK  
 Misc :  
 ALS Vial : 2 Sample Multiplier: 1

Instrument :  
 ECD\_D  
 ClientSampled :  
 I.BLK

Integration File signal 1: autoint1.e  
 Integration File signal 2: autoint2.e  
 Quant Time: Sep 27 15:21:49 2021  
 Quant Method : Z:\pestpcbsrv\HPCHEM1\ECD\_D\Method\PD092221.M  
 Quant Title : GC Extractables  
 QLast Update : Thu Sep 23 12:18:33 2021  
 Response via : Initial Calibration  
 Integrator: ChemStation

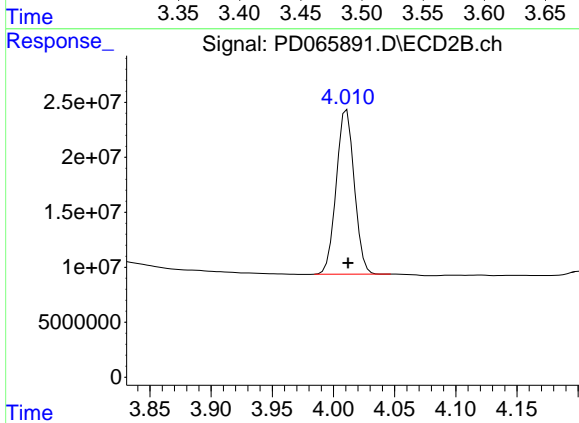
Volume Inj. : 2 µl  
 Signal #1 Phase : ZB-MR2 Signal #2 Phase: ZB-MR1  
 Signal #1 Info : 30M x 0.32mm x 0.2 Signal #2 Info : 30M x 0.32mm x 0.50µm



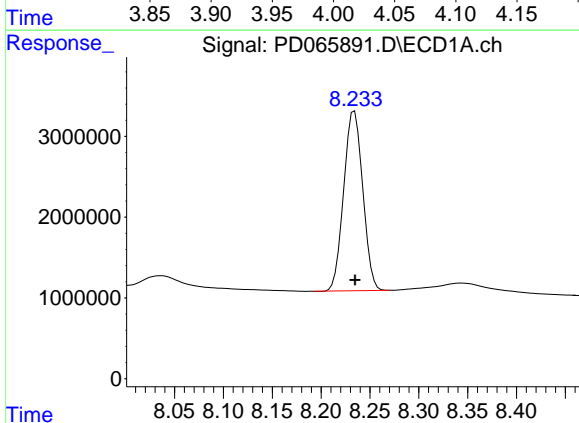


#1 Tetrachloro-m-xylene  
 R.T.: 3.492 min  
 Delta R.T.: 0.000 min  
 Response: 19562214  
 Conc: 26.42 ng/ml

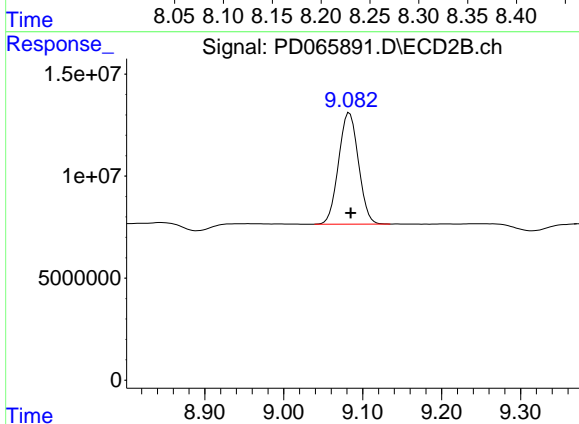
Instrument :  
 ECD\_D  
 ClientSampled :  
 I.BLK



#1 Tetrachloro-m-xylene  
 R.T.: 4.011 min  
 Delta R.T.: -0.001 min  
 Response: 153428555  
 Conc: 26.72 ng/ml



#28 Decachlorobiphenyl  
 R.T.: 8.234 min  
 Delta R.T.: 0.000 min  
 Response: 30226633  
 Conc: 22.13 ng/ml



#28 Decachlorobiphenyl  
 R.T.: 9.083 min  
 Delta R.T.: -0.002 min  
 Response: 95505226  
 Conc: 24.68 ng/ml