

Data Path : Z:\pestpcbsrv\HPCHEM1\ECD\_D\Data\PD092721\  
 Data File : PD065892.D  
 Signal(s) : Signal #1: ECD1A.ch Signal #2: ECD2B.ch  
 Acq On : 27 Sep 2021 09:27  
 Operator : AR\AJ  
 Sample : PEM  
 Misc :  
 ALS Vial : 3 Sample Multiplier: 1

Instrument :  
 ECD\_D  
 ClientSampled :  
 PEM

Manual Integrations  
 APPROVED

mohammad  
 9/28/2021 11:26:56 AM

Integration File signal 1: autoint1.e  
 Integration File signal 2: autoint2.e  
 Quant Time: Sep 27 15:21:59 2021  
 Quant Method : Z:\pestpcbsrv\HPCHEM1\ECD\_D\Method\PD092221.M  
 Quant Title : GC Extractables  
 QLast Update : Thu Sep 23 12:18:33 2021  
 Response via : Initial Calibration  
 Integrator: ChemStation

Volume Inj. : 2 µl  
 Signal #1 Phase : ZB-MR2 Signal #2 Phase: ZB-MR1  
 Signal #1 Info : 30M x 0.32mm x0.2 Signal #2 Info : 30M x 0.32mm x 0.50µm

	Compound	RT#1	RT#2	Resp#1	Resp#2	ng/ml	ng/ml
-----							
System Monitoring Compounds							
1)	SA Tetrachlo...	3.492	4.012	17502202	139.1E6	23.634	24.225
28)	SA Decachlor...	8.234	9.084	27610087	86701696	20.213	22.403
Target Compounds							
2)	A alpha-BHC	3.932	4.407	12178161	100.8E6	10.844	11.989
3)	MA gamma-BHC...	4.215	4.693	12354651	93724370	11.017	12.131
6)	B beta-BHC	4.464	4.869	8848088	46601172	15.499	12.609
12)	B 4,4'-DDE	5.648	6.356	257010	1694311	0.236	0.294m
14)	MA Endrin	6.042	6.727	55257422	255.1E6	52.221	51.753
16)	A 4,4'-DDD	6.164	6.850	3430011	19130658	3.497	3.893
17)	MA 4,4'-DDT	6.404	7.148	112.1E6	473.6E6	101.873	93.764
18)	B Endrin al...	6.481	7.065	1353711	4190902	1.527	1.070 #
20)	A Methoxychlor	6.950	7.607	160.4E6	534.3E6	234.747	203.033
21)	B Endrin ke...	7.186	7.761	5744895	21243118	4.078	3.725

(f)=RT Delta > 1/2 Window (#)=Amounts differ by > 25% (m)=manual int.

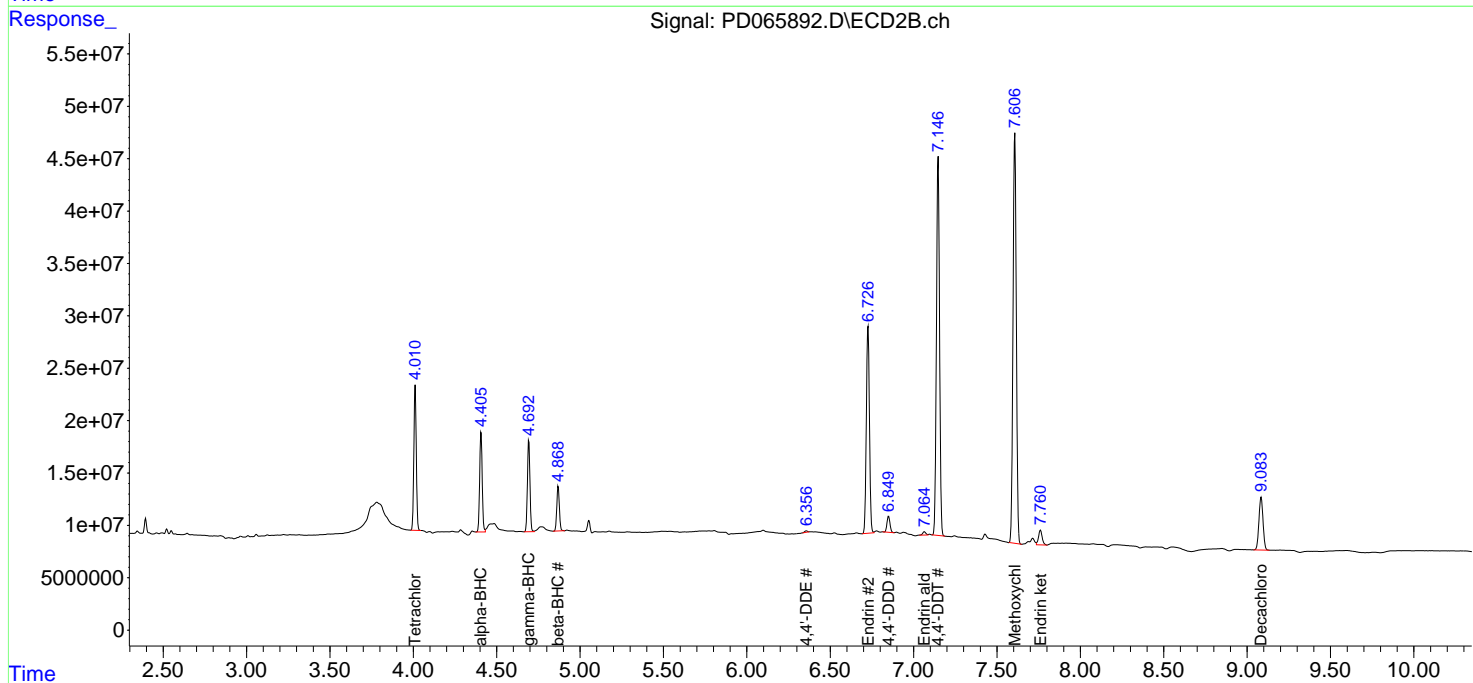
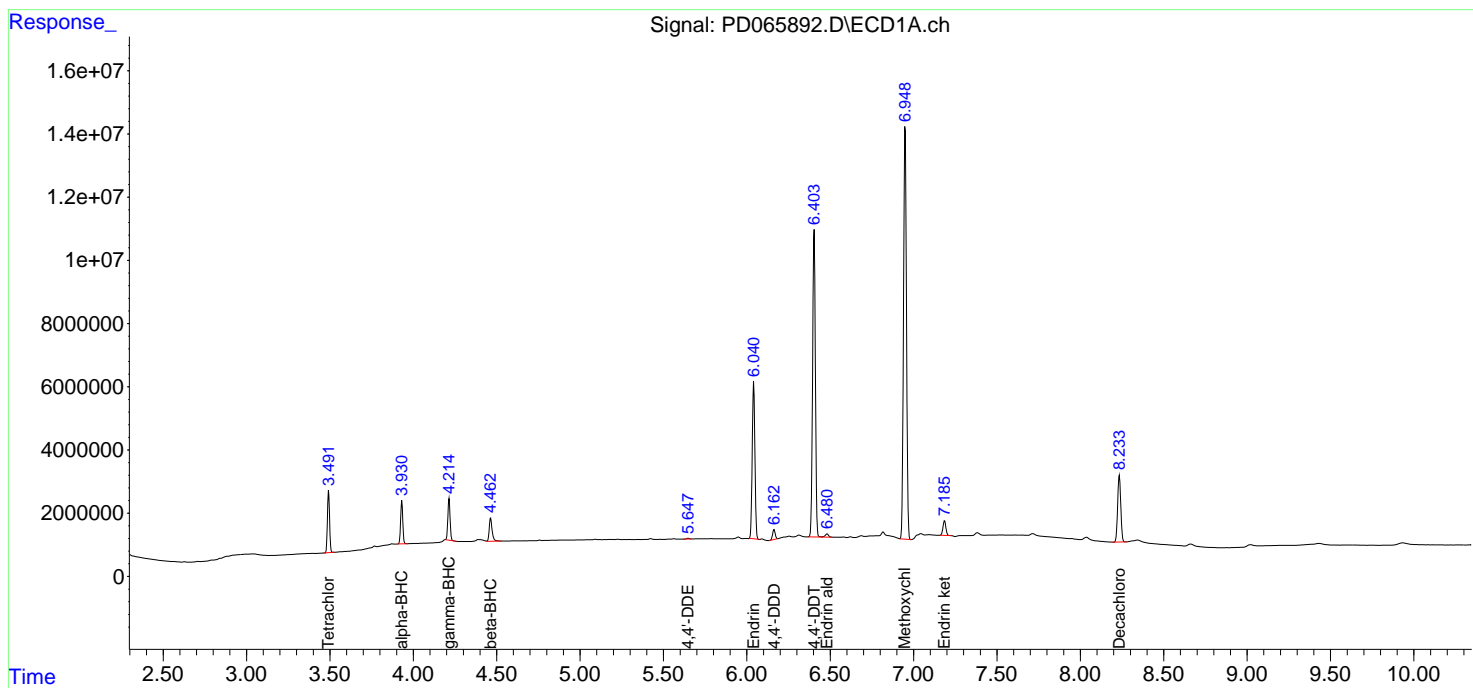
Data Path : Z:\pestpcbsrv\HPCHEM1\ECD\_D\Data\PD092721\  
 Data File : PD065892.D  
 Signal(s) : Signal #1: ECD1A.ch Signal #2: ECD2B.ch  
 Acq On : 27 Sep 2021 09:27  
 Operator : AR\AJ  
 Sample : PEM  
 Misc :  
 ALS Vial : 3 Sample Multiplier: 1

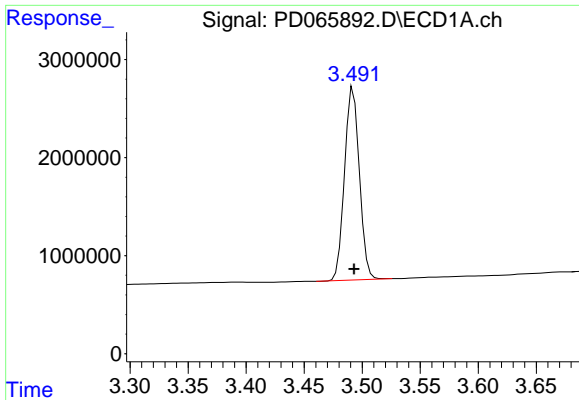
Instrument :  
 ECD\_D  
 ClientSampled :  
 PEM

Manual Integrations  
**APPROVED**  
 mohammad  
 9/28/2021 11:26:56 AM

Integration File signal 1: autoint1.e  
 Integration File signal 2: autoint2.e  
 Quant Time: Sep 27 15:21:59 2021  
 Quant Method : Z:\pestpcbsrv\HPCHEM1\ECD\_D\Method\PD092221.M  
 Quant Title : GC Extractables  
 QLast Update : Thu Sep 23 12:18:33 2021  
 Response via : Initial Calibration  
 Integrator: ChemStation

Volume Inj. : 2 µl  
 Signal #1 Phase : ZB-MR2 Signal #2 Phase: ZB-MR1  
 Signal #1 Info : 30M x 0.32mm x 0.2 Signal #2 Info : 30M x 0.32mm x 0.50µm





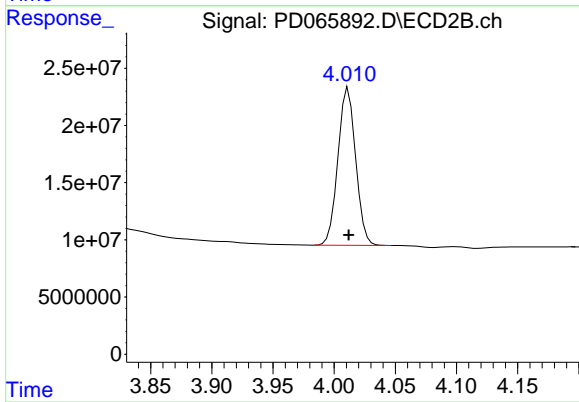
#1 Tetrachloro-m-xylene

R.T.: 3.492 min  
 Delta R.T.: 0.000 min  
 Response: 17502202  
 Conc: 23.63 ng/ml

Instrument :  
 ECD\_D  
 ClientSampled :  
 PEM

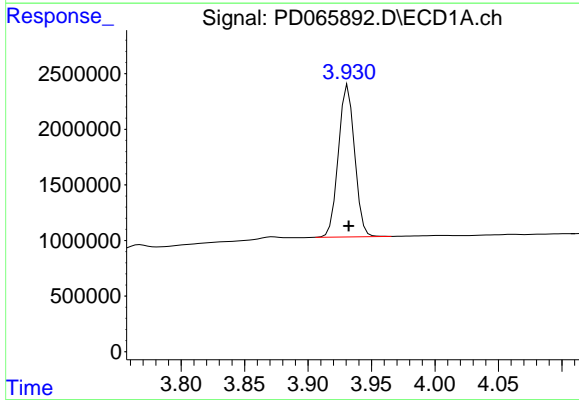
Manual Integrations  
 APPROVED

mohammad  
 9/28/2021 11:26:56 AM



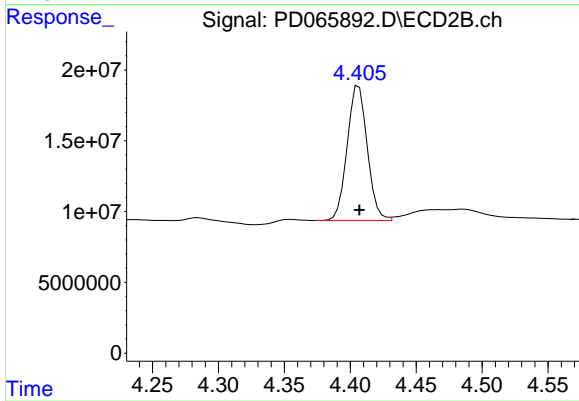
#1 Tetrachloro-m-xylene

R.T.: 4.012 min  
 Delta R.T.: 0.000 min  
 Response: 139100876  
 Conc: 24.22 ng/ml



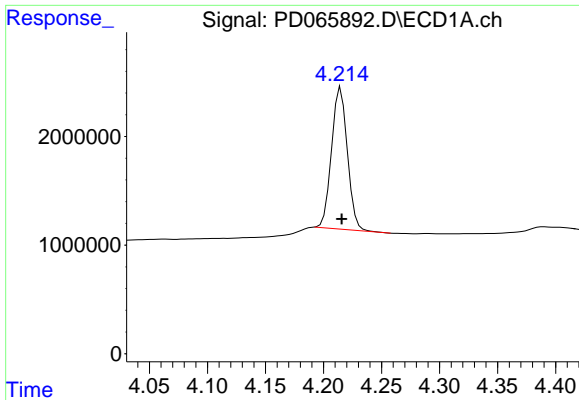
#2 alpha-BHC

R.T.: 3.932 min  
 Delta R.T.: 0.000 min  
 Response: 12178161  
 Conc: 10.84 ng/ml



#2 alpha-BHC

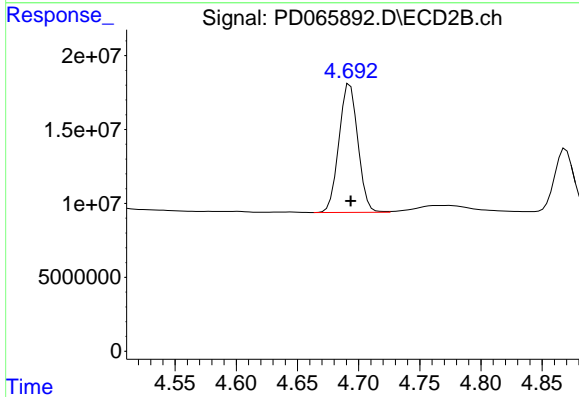
R.T.: 4.407 min  
 Delta R.T.: 0.000 min  
 Response: 100808218  
 Conc: 11.99 ng/ml



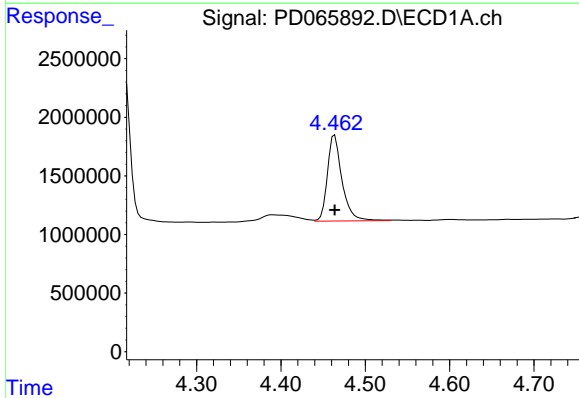
#3 gamma-BHC (Lindane)  
 R.T.: 4.215 min  
 Delta R.T.: 0.000 min  
 Response: 12354651  
 Conc: 11.02 ng/ml

Instrument :  
 ECD\_D  
 ClientSampled :  
 PEM

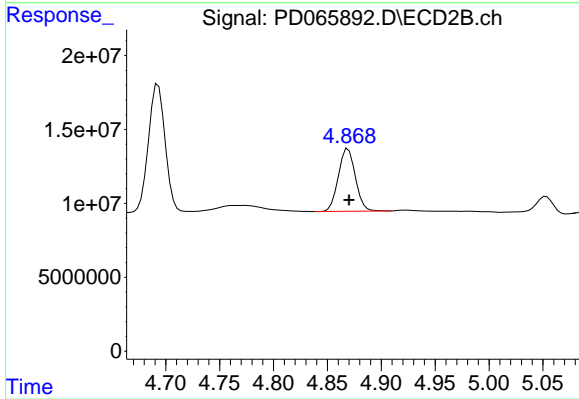
Manual Integrations  
 APPROVED  
 mohammad  
 9/28/2021 11:26:56 AM



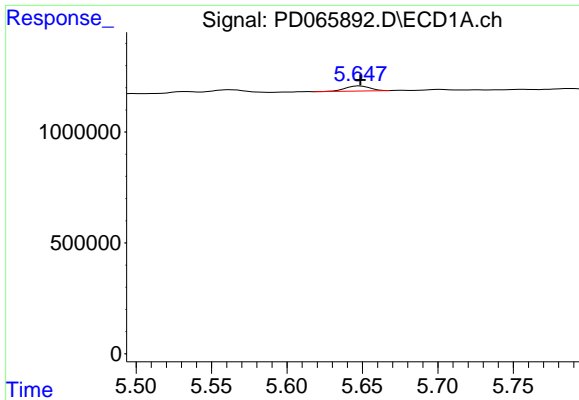
#3 gamma-BHC (Lindane)  
 R.T.: 4.693 min  
 Delta R.T.: 0.000 min  
 Response: 93724370  
 Conc: 12.13 ng/ml



#6 beta-BHC  
 R.T.: 4.464 min  
 Delta R.T.: 0.000 min  
 Response: 8848088  
 Conc: 15.50 ng/ml



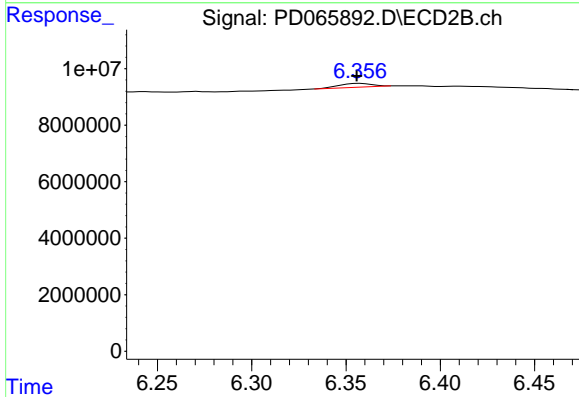
#6 beta-BHC  
 R.T.: 4.869 min  
 Delta R.T.: 0.000 min  
 Response: 46601172  
 Conc: 12.61 ng/ml



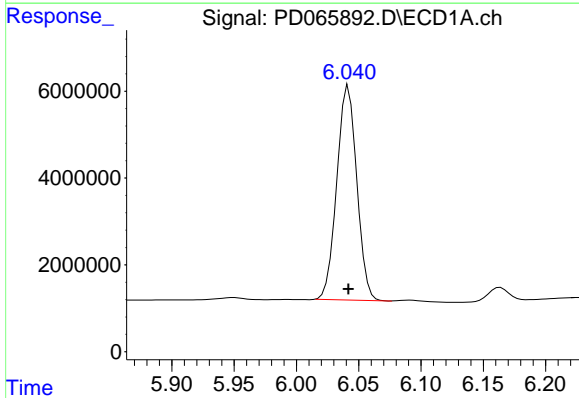
#12 4,4'-DDE  
 R.T.: 5.648 min  
 Delta R.T.: 0.000 min  
 Response: 257010  
 Conc: 0.24 ng/ml

**Instrument :**  
 ECD\_D  
**ClientSampled :**  
 PEM

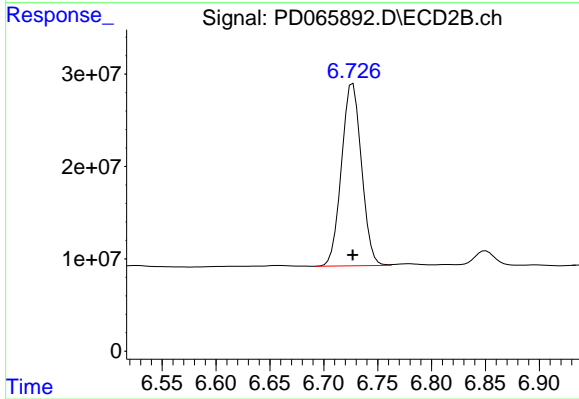
**Manual Integrations**  
**APPROVED**  
 mohammad  
 9/28/2021 11:26:56 AM



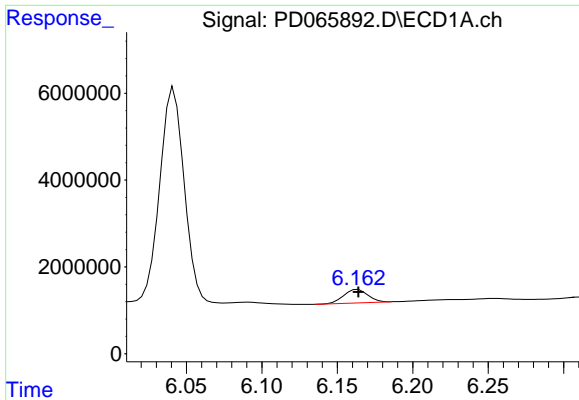
#12 4,4'-DDE  
 R.T.: 6.356 min  
 Delta R.T.: 0.000 min  
 Response: 1694311  
 Conc: 0.29 ng/ml m



#14 Endrin  
 R.T.: 6.042 min  
 Delta R.T.: 0.000 min  
 Response: 55257422  
 Conc: 52.22 ng/ml



#14 Endrin  
 R.T.: 6.727 min  
 Delta R.T.: 0.000 min  
 Response: 255146082  
 Conc: 51.75 ng/ml



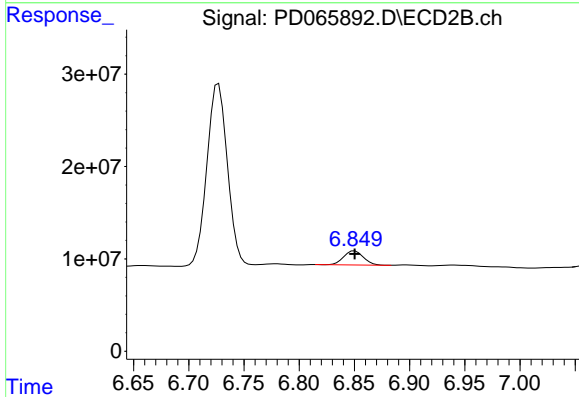
#16 4,4'-DDD

R.T.: 6.164 min  
 Delta R.T.: 0.000 min  
 Response: 3430011  
 Conc: 3.50 ng/ml

Instrument :  
 ECD\_D  
 ClientSampled :  
 PEM

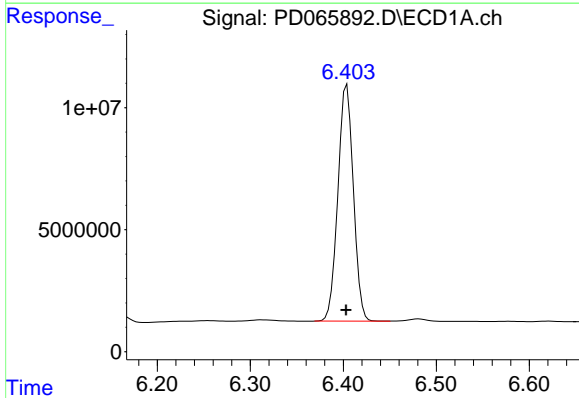
Manual Integrations  
 APPROVED

mohammad  
 9/28/2021 11:26:56 AM



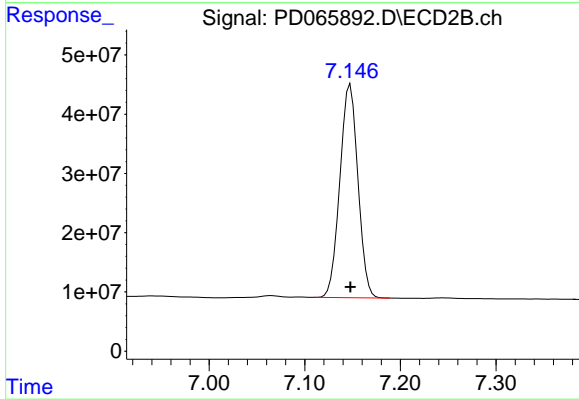
#16 4,4'-DDD

R.T.: 6.850 min  
 Delta R.T.: 0.000 min  
 Response: 19130658  
 Conc: 3.89 ng/ml



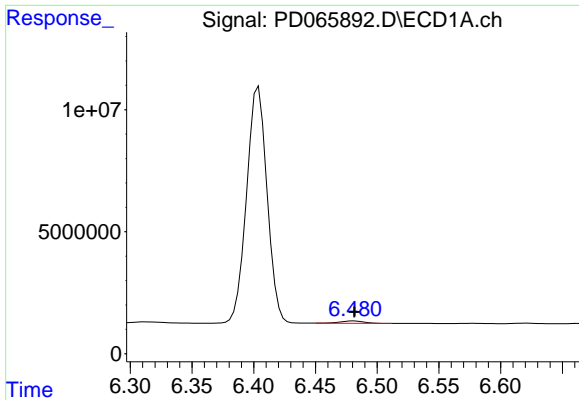
#17 4,4'-DDT

R.T.: 6.404 min  
 Delta R.T.: 0.000 min  
 Response: 112131249  
 Conc: 101.87 ng/ml



#17 4,4'-DDT

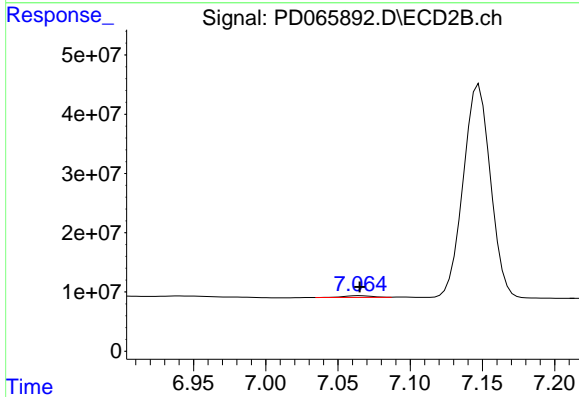
R.T.: 7.148 min  
 Delta R.T.: 0.000 min  
 Response: 473636000  
 Conc: 93.76 ng/ml



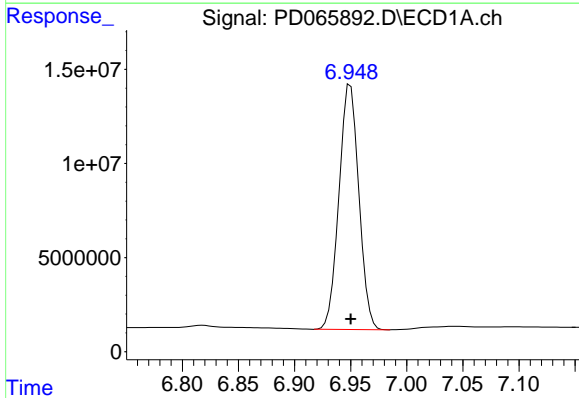
#18 Endrin aldehyde  
 R.T.: 6.481 min  
 Delta R.T.: 0.000 min  
 Response: 1353711  
 Conc: 1.53 ng/ml

Instrument :  
 ECD\_D  
 ClientSampled :  
 PEM

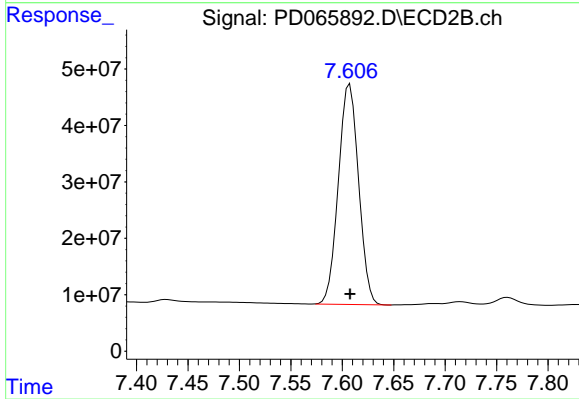
Manual Integrations  
 APPROVED  
 mohammad  
 9/28/2021 11:26:56 AM



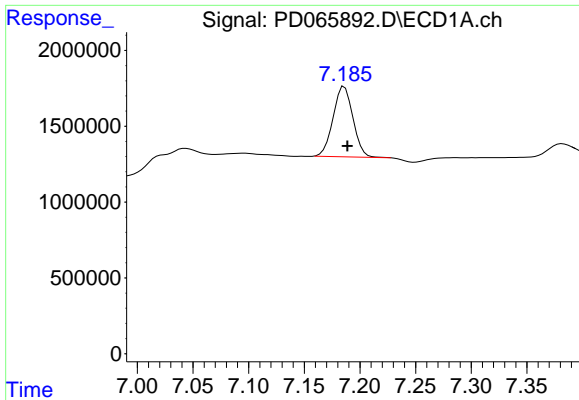
#18 Endrin aldehyde  
 R.T.: 7.065 min  
 Delta R.T.: 0.000 min  
 Response: 4190902  
 Conc: 1.07 ng/ml



#20 Methoxychlor  
 R.T.: 6.950 min  
 Delta R.T.: 0.000 min  
 Response: 160416683  
 Conc: 234.75 ng/ml



#20 Methoxychlor  
 R.T.: 7.607 min  
 Delta R.T.: 0.000 min  
 Response: 534304903  
 Conc: 203.03 ng/ml



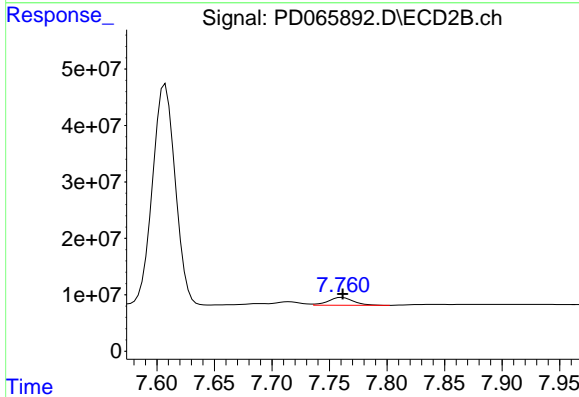
#21 Endrin ketone

R.T.: 7.186 min  
 Delta R.T.: -0.003 min  
 Response: 5744895  
 Conc: 4.08 ng/ml

Instrument :  
 ECD\_D  
 ClientSampled :  
 PEM

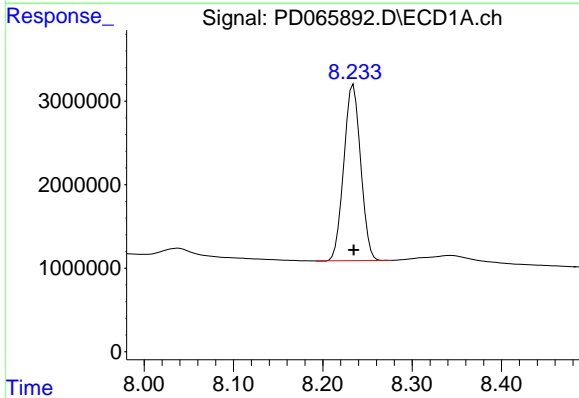
Manual Integrations  
 APPROVED

mohammad  
 9/28/2021 11:26:56 AM



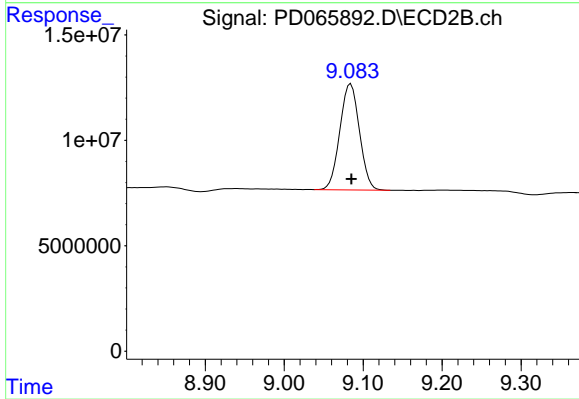
#21 Endrin ketone

R.T.: 7.761 min  
 Delta R.T.: 0.000 min  
 Response: 21243118  
 Conc: 3.72 ng/ml



#28 Decachlorobiphenyl

R.T.: 8.234 min  
 Delta R.T.: 0.000 min  
 Response: 27610087  
 Conc: 20.21 ng/ml



#28 Decachlorobiphenyl

R.T.: 9.084 min  
 Delta R.T.: 0.000 min  
 Response: 86701696  
 Conc: 22.40 ng/ml