

Data Path : Z:\pestpcbsrv\HPCHEM1\ECD_D\Data\PD092721\
 Data File : PD065896.D
 Signal(s) : Signal #1: ECD1A.ch Signal #2: ECD2B.ch
 Acq On : 27 Sep 2021 10:49
 Operator : AR\AJ
 Sample : M3907-03
 Misc :
 ALS Vial : 7 Sample Multiplier: 1

Instrument :
 ECD_D
 ClientSampleId :
 RO-206

Integration File signal 1: autoint1.e
 Integration File signal 2: autoint2.e
 Quant Time: Sep 27 15:22:40 2021
 Quant Method : Z:\pestpcbsrv\HPCHEM1\ECD_D\Method\PD092221.M
 Quant Title : GC Extractables
 QLast Update : Thu Sep 23 12:18:33 2021
 Response via : Initial Calibration
 Integrator: ChemStation

Volume Inj. : 2 µl
 Signal #1 Phase : ZB-MR2 Signal #2 Phase: ZB-MR1
 Signal #1 Info : 30M x 0.32mm x0.2 Signal #2 Info : 30M x 0.32mm x 0.50µm

Compound	RT#1	RT#2	Resp#1	Resp#2	ng/ml	ng/ml

System Monitoring Compounds						
1) SA Tetrachlo...	3.493	4.012	19020247	146.4E6	25.684	25.500
28) SA Decachlor...	8.235	9.084	27637558	87051448	20.233	22.493

Target Compounds

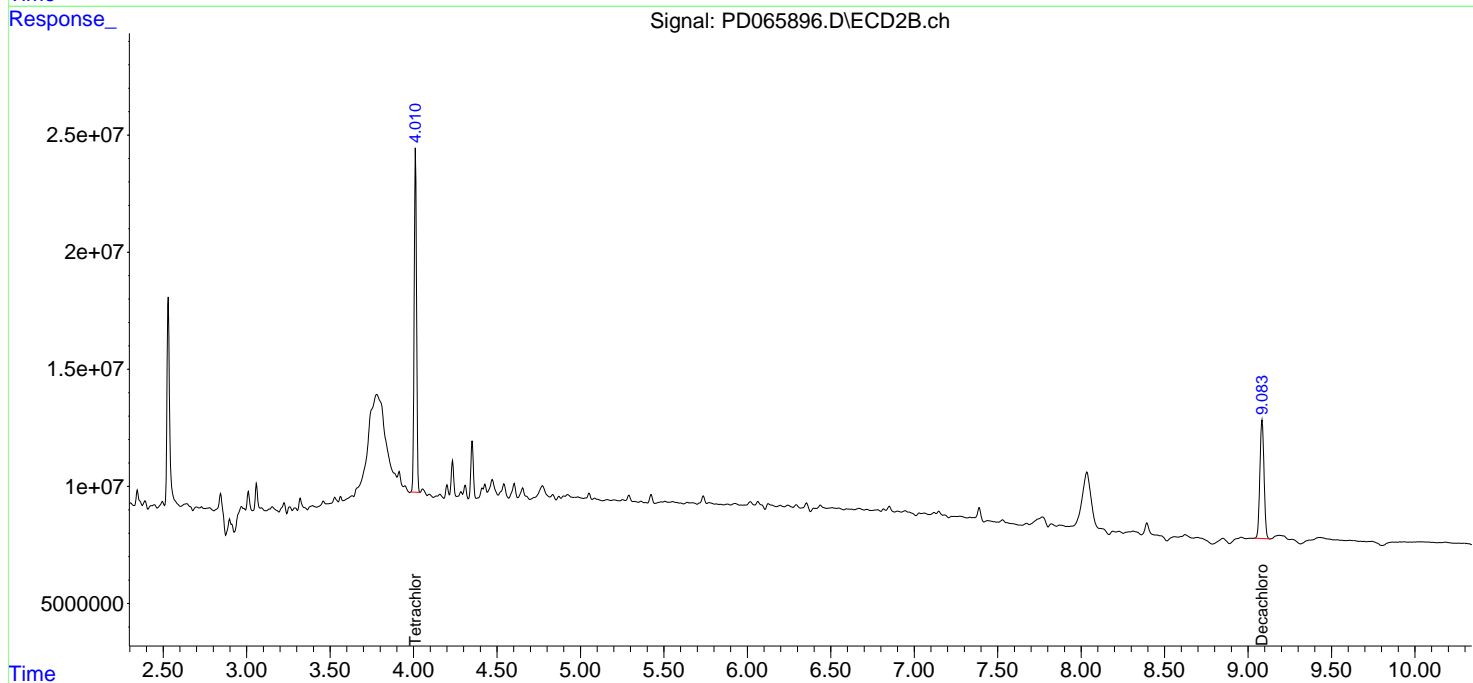
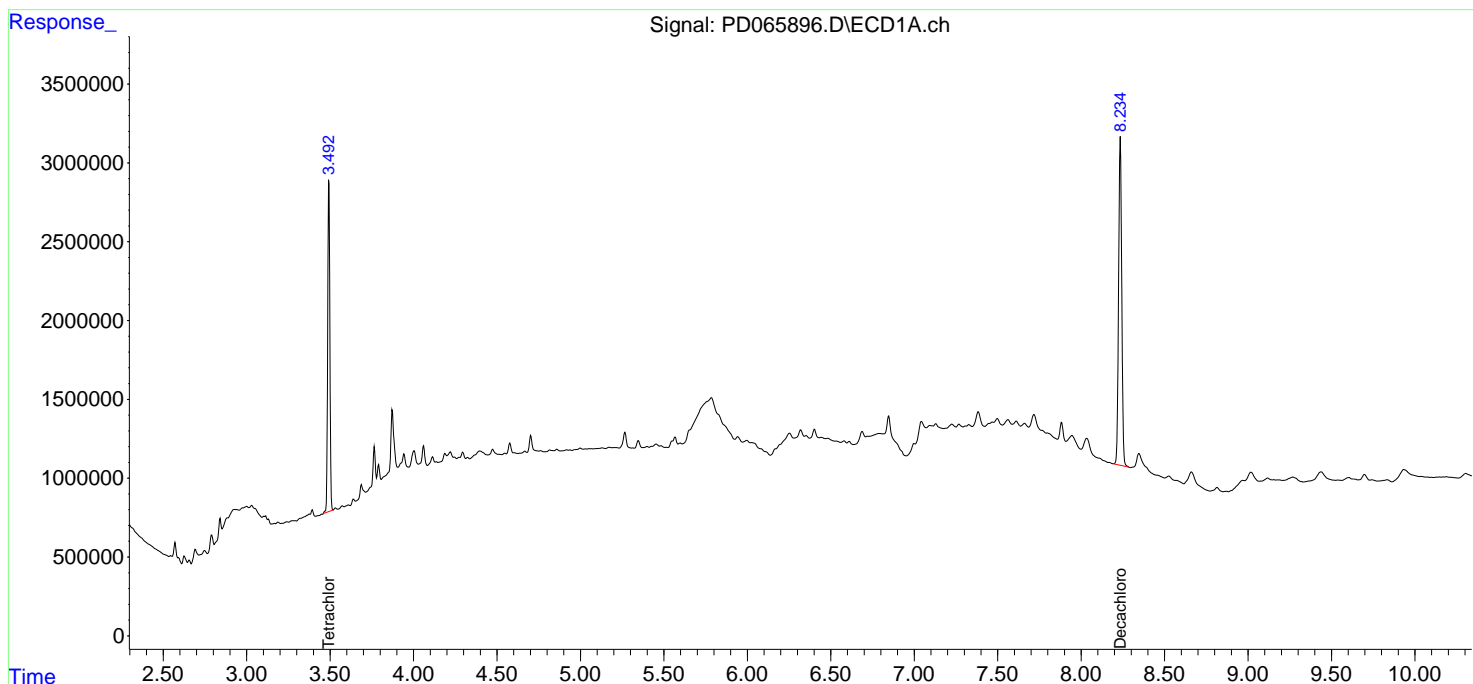
(f)=RT Delta > 1/2 Window (#)=Amounts differ by > 25% (m)=manual int.

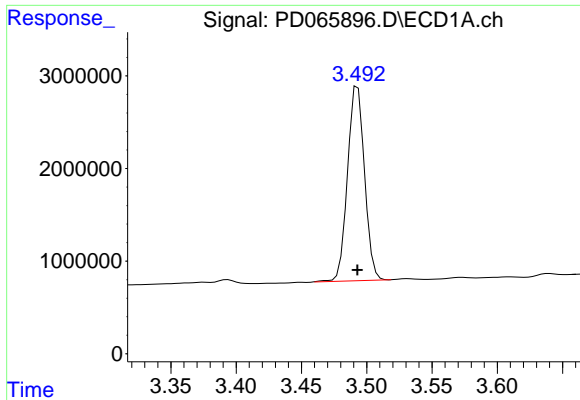
Data Path : Z:\pestpcbsrv\HPCHEM1\ECD_D\Data\PD092721\
 Data File : PD065896.D
 Signal(s) : Signal #1: ECD1A.ch Signal #2: ECD2B.ch
 Acq On : 27 Sep 2021 10:49
 Operator : AR\AJ
 Sample : M3907-03
 Misc :
 ALS Vial : 7 Sample Multiplier: 1

Instrument :
 ECD_D
 ClientSampleID :
 RO-206

Integration File signal 1: autoint1.e
 Integration File signal 2: autoint2.e
 Quant Time: Sep 27 15:22:40 2021
 Quant Method : Z:\pestpcbsrv\HPCHEM1\ECD_D\Method\PD092221.M
 Quant Title : GC Extractables
 QLast Update : Thu Sep 23 12:18:33 2021
 Response via : Initial Calibration
 Integrator: ChemStation

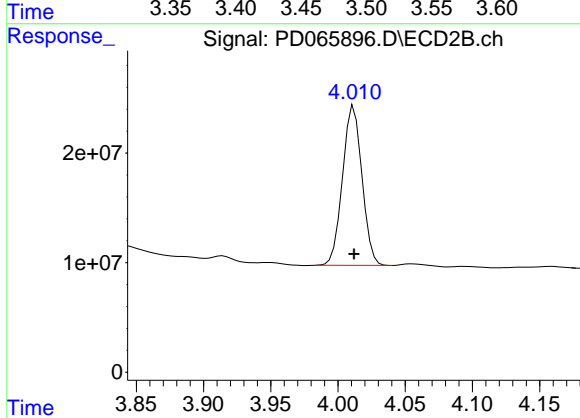
Volume Inj. : 2 µl
 Signal #1 Phase : ZB-MR2 Signal #2 Phase: ZB-MR1
 Signal #1 Info : 30M x 0.32mm x 0.2 Signal #2 Info : 30M x 0.32mm x 0.50µm



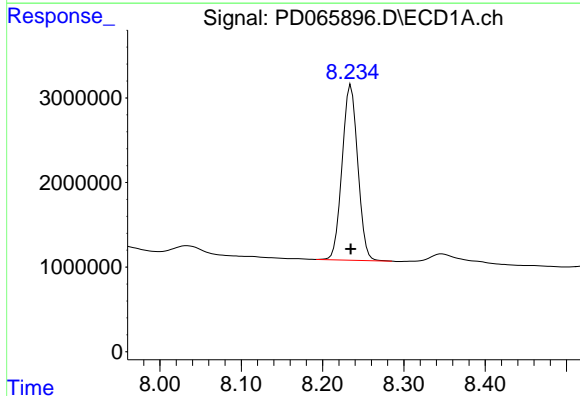


#1 Tetrachloro-m-xylene
 R.T.: 3.493 min
 Delta R.T.: 0.000 min
 Response: 19020247
 Conc: 25.68 ng/ml

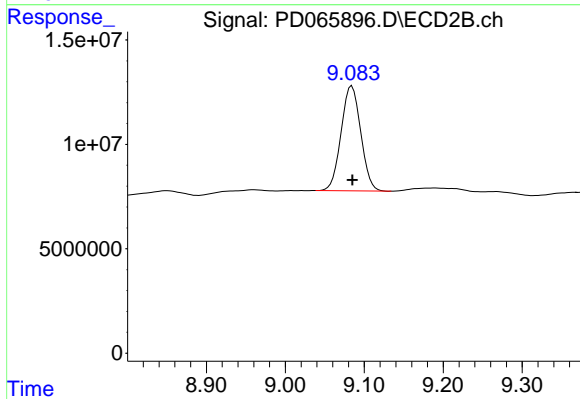
Instrument :
 ECD_D
 ClientSampleId :
 RO-206



#1 Tetrachloro-m-xylene
 R.T.: 4.012 min
 Delta R.T.: 0.000 min
 Response: 146422657
 Conc: 25.50 ng/ml



#28 Decachlorobiphenyl
 R.T.: 8.235 min
 Delta R.T.: 0.000 min
 Response: 27637558
 Conc: 20.23 ng/ml



#28 Decachlorobiphenyl
 R.T.: 9.084 min
 Delta R.T.: 0.000 min
 Response: 87051448
 Conc: 22.49 ng/ml