

Data Path : Z:\pestpcbsrv\HPCHEM1\ECD_D\Data\PD092721\
 Data File : PD065902.D
 Signal(s) : Signal #1: ECD1A.ch Signal #2: ECD2B.ch
 Acq On : 27 Sep 2021 13:29
 Operator : AR\AJ
 Sample : M3941-01
 Misc :
 ALS Vial : 13 Sample Multiplier: 1

Instrument :
 ECD_D
ClientSampleID :
 124019

Manual Integrations
APPROVED
 mohammad
 9/28/2021 11:27:07 AM

Integration File signal 1: autoint1.e
 Integration File signal 2: autoint2.e
 Quant Time: Sep 27 15:23:40 2021
 Quant Method : Z:\pestpcbsrv\HPCHEM1\ECD_D\Method\PD092221.M
 Quant Title : GC Extractables
 QLast Update : Thu Sep 23 12:18:33 2021
 Response via : Initial Calibration
 Integrator: ChemStation

Volume Inj. : 2 µl
 Signal #1 Phase : ZB-MR2 Signal #2 Phase: ZB-MR1
 Signal #1 Info : 30M x 0.32mm x0.2 Signal #2 Info : 30M x 0.32mm x 0.50µm

Compound	RT#1	RT#2	Resp#1	Resp#2	ng/ml	ng/ml

System Monitoring Compounds						
1) SA Tetrachlo...	3.493	4.012	11264752	93268068	15.211	16.243
28) SA Decachlor...	8.235	9.085	11582281	35730073	8.479	9.232
Target Compounds						
10) B gamma-Chl...	5.426	6.128	939812	3064634	0.778m	0.511m#
11) B alpha-Chl...	5.485	6.196	839711	7276110	0.709m	1.212m#
12) B 4,4'-DDE	5.648	6.354	894824	5361436	0.822	0.930m
16) A 4,4'-DDD	6.165	6.848	551128	9718678	0.562	1.978m#
17) MA 4,4'-DDT	6.403	7.148	1850634	6197544	1.681	1.227 #

(f)=RT Delta > 1/2 Window (#)=Amounts differ by > 25% (m)=manual int.

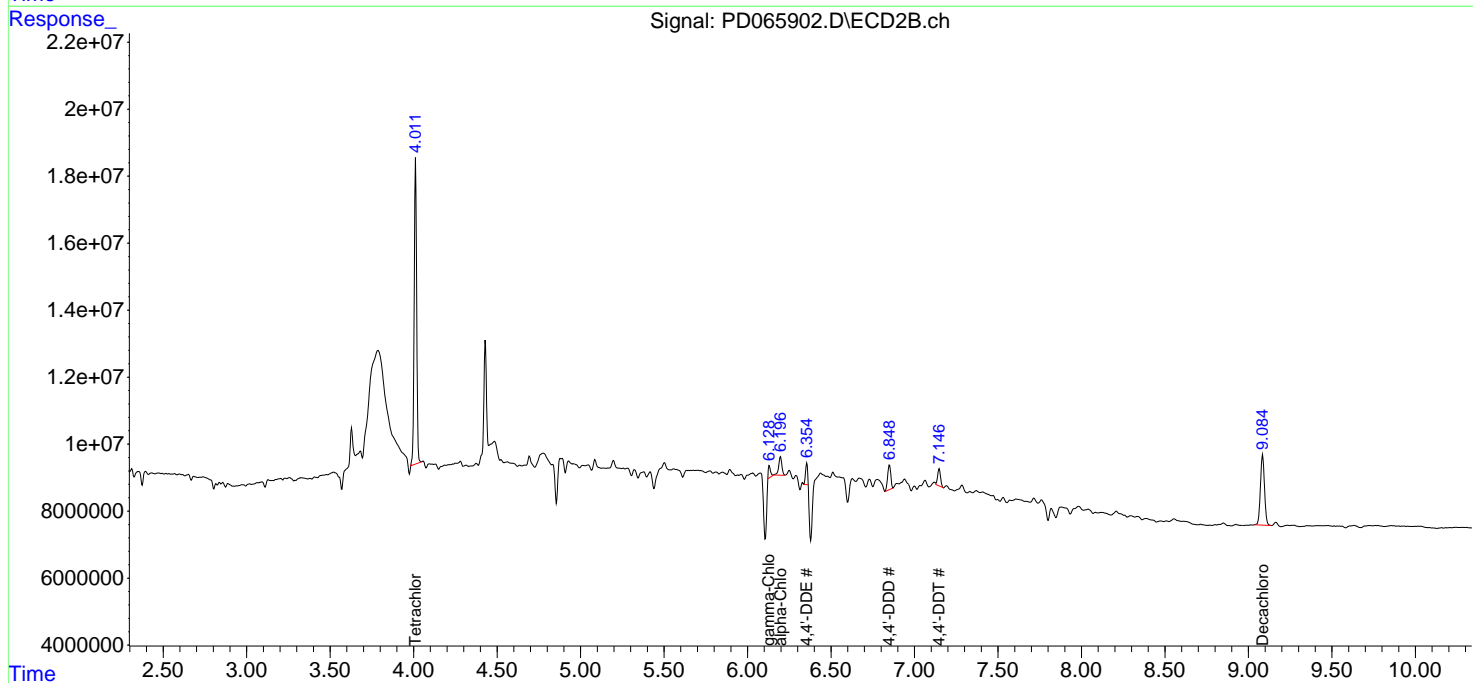
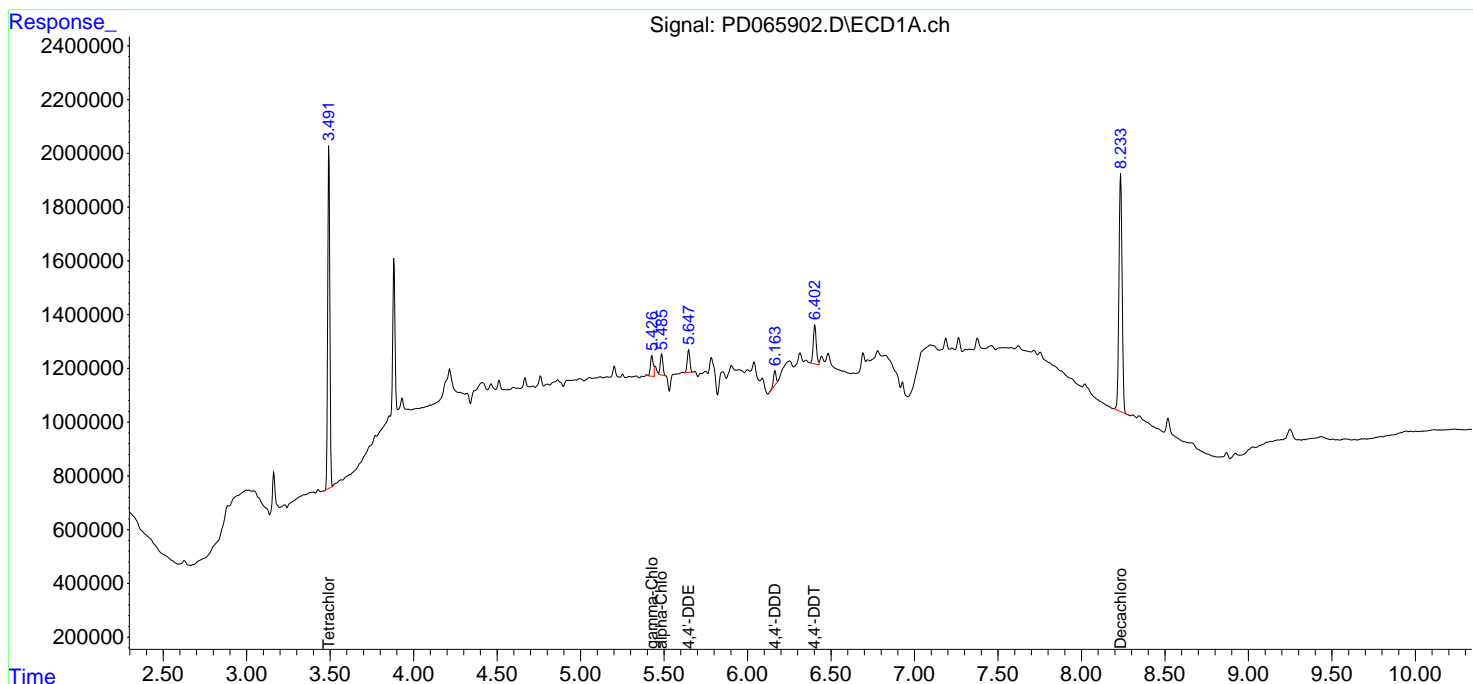
Data Path : Z:\pestpcbsrv\HPCHEM1\ECD_D\Data\PD092721\
 Data File : PD065902.D
 Signal(s) : Signal #1: ECD1A.ch Signal #2: ECD2B.ch
 Acq On : 27 Sep 2021 13:29
 Operator : AR\AJ
 Sample : M3941-01
 Misc :
 ALS Vial : 13 Sample Multiplier: 1

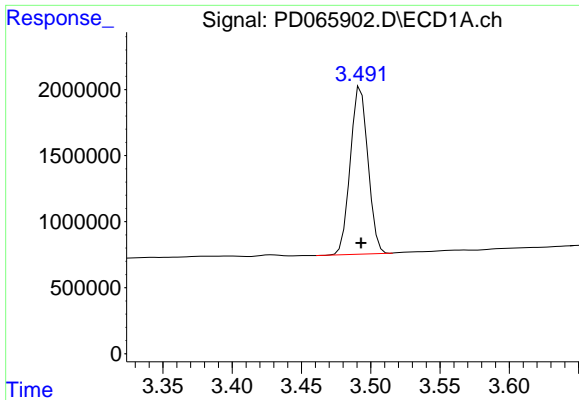
Instrument :
 ECD_D
ClientSampled :
 124019

Manual Integrations
APPROVED
 mohammad
 9/28/2021 11:27:07 AM

Integration File signal 1: autoint1.e
 Integration File signal 2: autoint2.e
 Quant Time: Sep 27 15:23:40 2021
 Quant Method : Z:\pestpcbsrv\HPCHEM1\ECD_D\Method\PD092221.M
 Quant Title : GC Extractables
 QLast Update : Thu Sep 23 12:18:33 2021
 Response via : Initial Calibration
 Integrator: ChemStation

Volume Inj. : 2 µl
 Signal #1 Phase : ZB-MR2 Signal #2 Phase: ZB-MR1
 Signal #1 Info : 30M x 0.32mm x0.2 Signal #2 Info : 30M x 0.32mm x 0.50µm

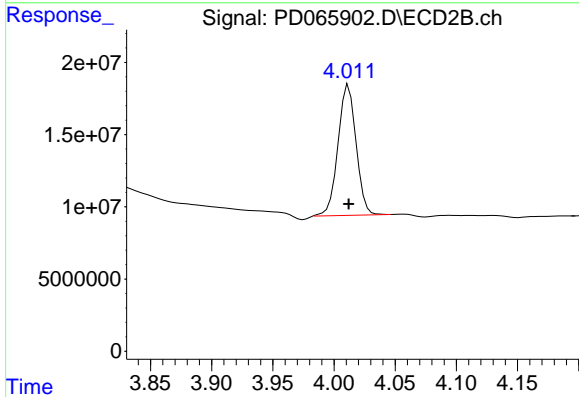




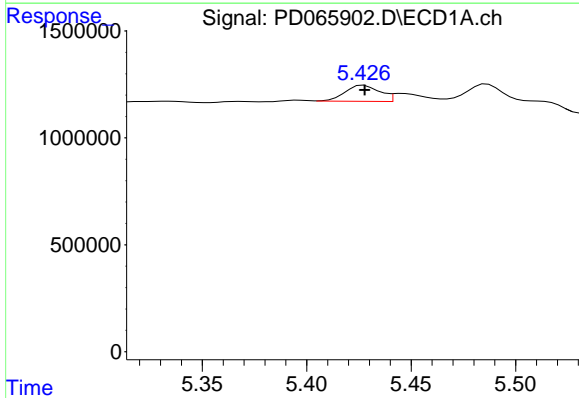
#1 Tetrachloro-m-xylene
 R.T.: 3.493 min
 Delta R.T.: 0.000 min
 Response: 11264752
 Conc: 15.21 ng/ml

Instrument :
 ECD_D
 ClientSampleId :
 124019

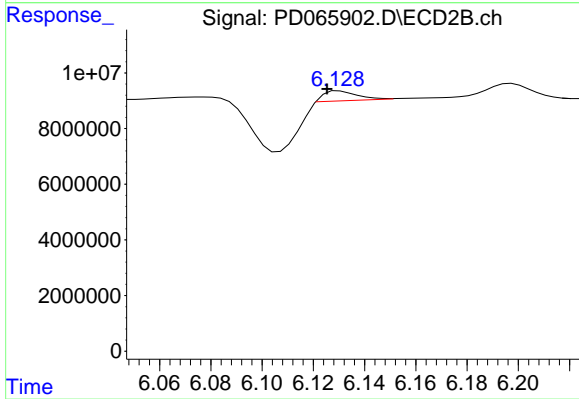
Manual Integrations
 APPROVED
 mohammad
 9/28/2021 11:27:07 AM



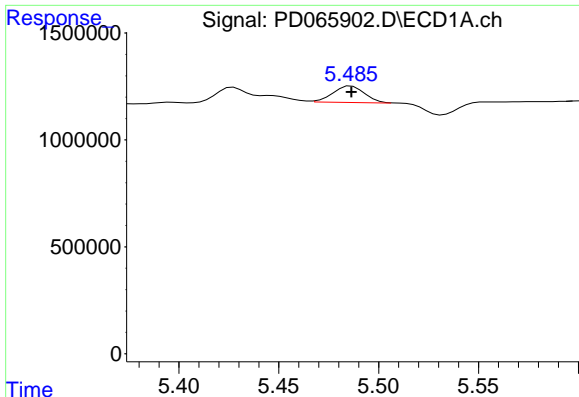
#1 Tetrachloro-m-xylene
 R.T.: 4.012 min
 Delta R.T.: 0.000 min
 Response: 93268068
 Conc: 16.24 ng/ml



#10 gamma-Chlordane
 R.T.: 5.426 min
 Delta R.T.: -0.002 min
 Response: 939812
 Conc: 0.78 ng/ml m



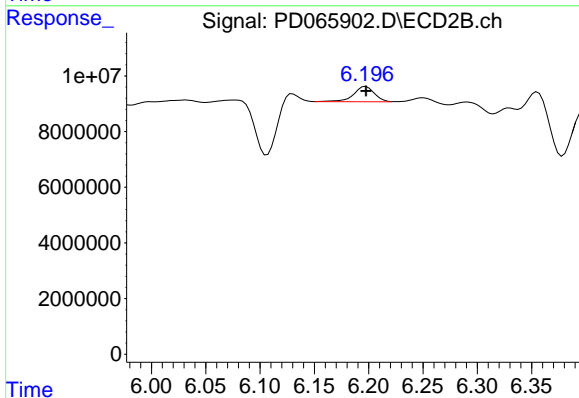
#10 gamma-Chlordane
 R.T.: 6.128 min
 Delta R.T.: 0.003 min
 Response: 3064634
 Conc: 0.51 ng/ml m



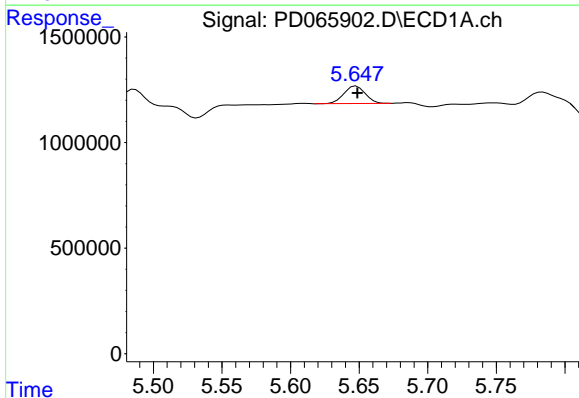
#11 alpha-Chlordane
 R.T.: 5.485 min
 Delta R.T.: -0.001 min
 Response: 839711
 Conc: 0.71 ng/ml m

Instrument :
 ECD_D
 ClientSampled :
 124019

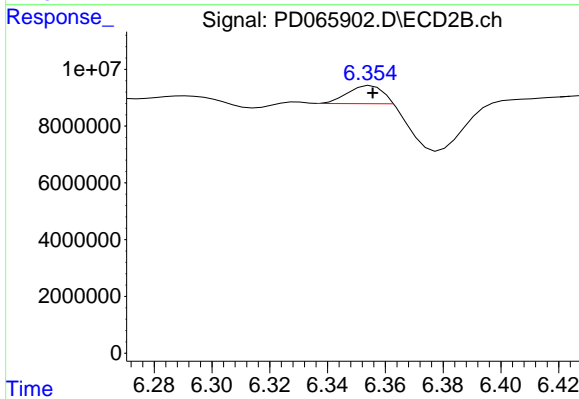
Manual Integrations
 APPROVED
 mohammad
 9/28/2021 11:27:07 AM



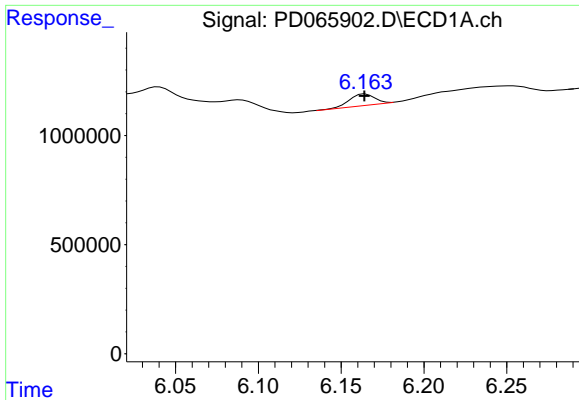
#11 alpha-Chlordane
 R.T.: 6.196 min
 Delta R.T.: -0.001 min
 Response: 7276110
 Conc: 1.21 ng/ml m



#12 4,4'-DDE
 R.T.: 5.648 min
 Delta R.T.: 0.000 min
 Response: 894824
 Conc: 0.82 ng/ml



#12 4,4'-DDE
 R.T.: 6.354 min
 Delta R.T.: -0.002 min
 Response: 5361436
 Conc: 0.93 ng/ml m

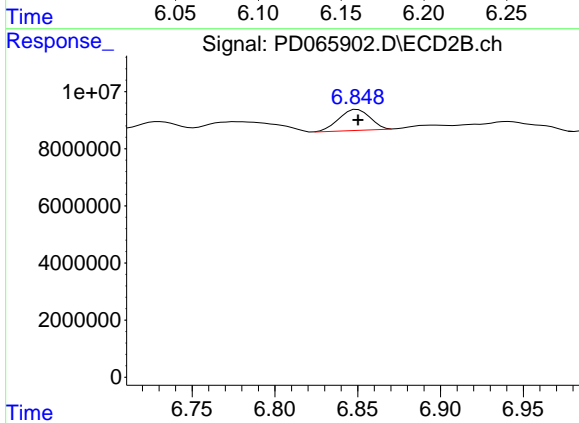


#16 4,4'-DDD

R.T.: 6.165 min
 Delta R.T.: 0.000 min
 Response: 551128
 Conc: 0.56 ng/ml

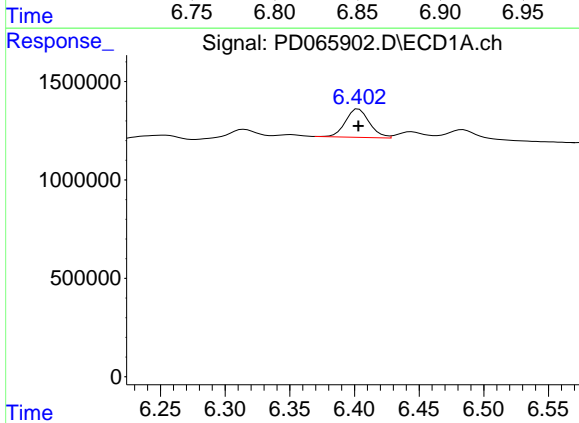
Instrument :
 ECD_D
 ClientSampled :
 124019

Manual Integrations
 APPROVED
 mohammad
 9/28/2021 11:27:07 AM



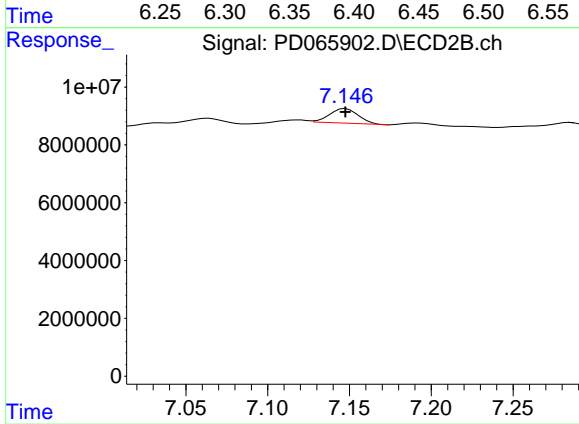
#16 4,4'-DDD

R.T.: 6.848 min
 Delta R.T.: -0.002 min
 Response: 9718678
 Conc: 1.98 ng/ml m



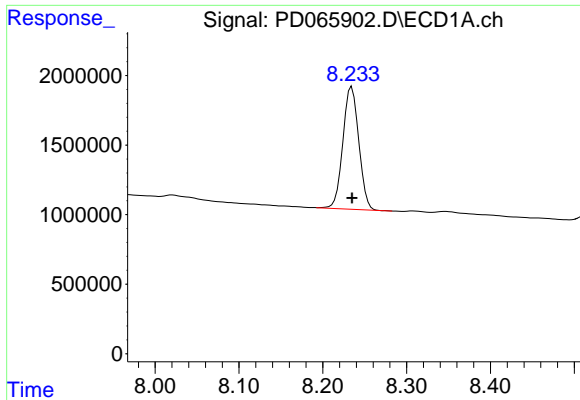
#17 4,4'-DDT

R.T.: 6.403 min
 Delta R.T.: 0.000 min
 Response: 1850634
 Conc: 1.68 ng/ml



#17 4,4'-DDT

R.T.: 7.148 min
 Delta R.T.: 0.000 min
 Response: 6197544
 Conc: 1.23 ng/ml



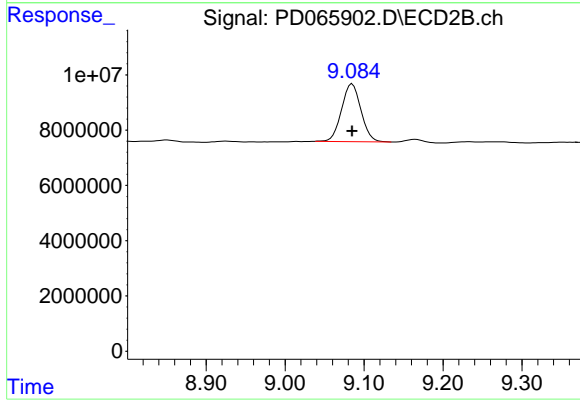
#28 Decachlorobiphenyl

R.T.: 8.235 min
Delta R.T.: 0.000 min
Response: 11582281
Conc: 8.48 ng/ml

Instrument :
ECD_D
ClientSampled :
124019

Manual Integrations
APPROVED

mohammad
9/28/2021 11:27:07 AM



#28 Decachlorobiphenyl

R.T.: 9.085 min
Delta R.T.: 0.000 min
Response: 35730073
Conc: 9.23 ng/ml