

Data Path : Z:\pestpcbsrv\HPCHEM1\ECD_D\Data\PD092721\
 Data File : PD065905.D
 Signal(s) : Signal #1: ECD1A.ch Signal #2: ECD2B.ch
 Acq On : 27 Sep 2021 14:10
 Operator : AR\AJ
 Sample : PSTDCCC050
 Misc :
 ALS Vial : 4 Sample Multiplier: 1

Instrument :
 ECD_D
 ClientSampleId :
 PSTDCCC050

Integration File signal 1: autoint1.e
 Integration File signal 2: autoint2.e
 Quant Time: Sep 27 15:24:10 2021
 Quant Method : Z:\pestpcbsrv\HPCHEM1\ECD_D\Method\PD092221.M
 Quant Title : GC Extractables
 QLast Update : Thu Sep 23 12:18:33 2021
 Response via : Initial Calibration
 Integrator: ChemStation

Volume Inj. : 2 µl
 Signal #1 Phase : ZB-MR2 Signal #2 Phase: ZB-MR1
 Signal #1 Info : 30M x 0.32mm x0.2 Signal #2 Info : 30M x 0.32mm x 0.50µm

	Compound	RT#1	RT#2	Resp#1	Resp#2	ng/ml	ng/ml

System Monitoring Compounds							
1)	SA Tetrachlo...	3.493	4.012	39096349	298.8E6	52.793	52.042
28)	SA Decachlor...	8.234	9.084	57094202	184.2E6	41.798	47.602
Target Compounds							
2)	A alpha-BHC	3.932	4.407	60031164	436.8E6	53.452	51.944
3)	MA gamma-BHC...	4.215	4.694	58148231	403.0E6	51.854	52.157
4)	MA Heptachlor	4.513	5.197	61027960	367.2E6	51.163	50.603
5)	MB Aldrin	4.760	5.502	58878315	341.3E6	52.632	50.725
6)	B beta-BHC	4.463	4.870	29366488	184.4E6	51.441	49.892
7)	B delta-BHC	4.668	5.087	60521656	387.0E6	53.536	53.781
8)	B Heptachlo...	5.203	5.892	58684151	305.6E6	52.409	59.127
9)	A Endosulfan I	5.541	6.250	56010466	285.8E6	51.502	51.711
10)	B gamma-Chl...	5.427	6.125	60461992	304.6E6	50.070	50.790
11)	B alpha-Chl...	5.486	6.198	60027015	299.0E6	50.708	49.815
12)	B 4,4'-DDE	5.648	6.356	55966709	292.8E6	51.416	50.769
13)	MA Dieldrin	5.784	6.508	59908236	301.0E6	51.688	51.074
14)	MA Endrin	6.042	6.727	48124586	228.5E6	45.480	46.338
15)	B Endosulfa...	6.314	6.941	53984499	250.3E6	49.971	51.672
16)	A 4,4'-DDD	6.163	6.850	51456264	252.8E6	52.456	51.435
17)	MA 4,4'-DDT	6.404	7.148	52902989	244.7E6	48.063	48.448
18)	B Endrin al...	6.483	7.065	43217534	196.6E6	48.763	50.215
19)	B Endosulfa...	6.694	7.288	57965145	250.7E6	50.786	50.829
20)	A Methoxychlor	6.950	7.608	32014181	127.1E6	46.848	48.291
21)	B Endrin ke...	7.188	7.761	73337667	288.4E6	52.062	50.568
22)	Mirex	7.373	8.210	56100886	187.9E6	46.465	47.582

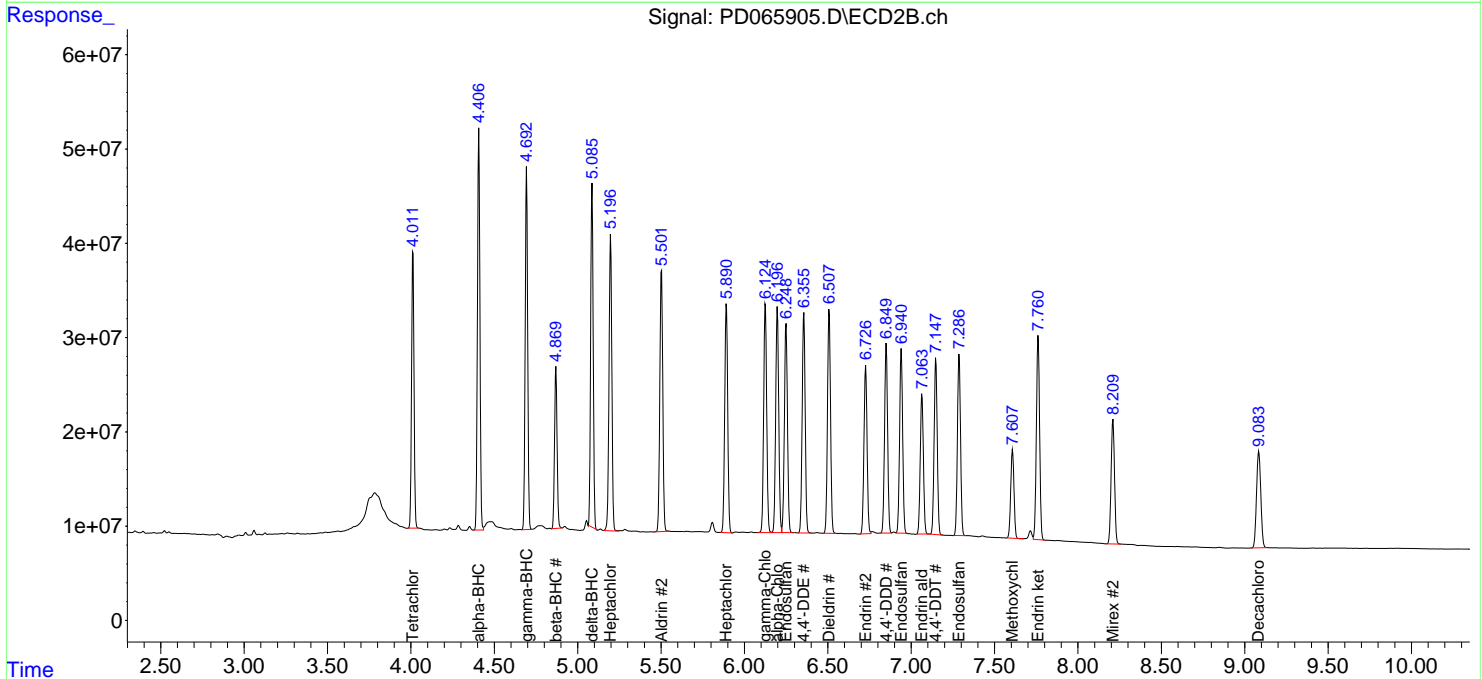
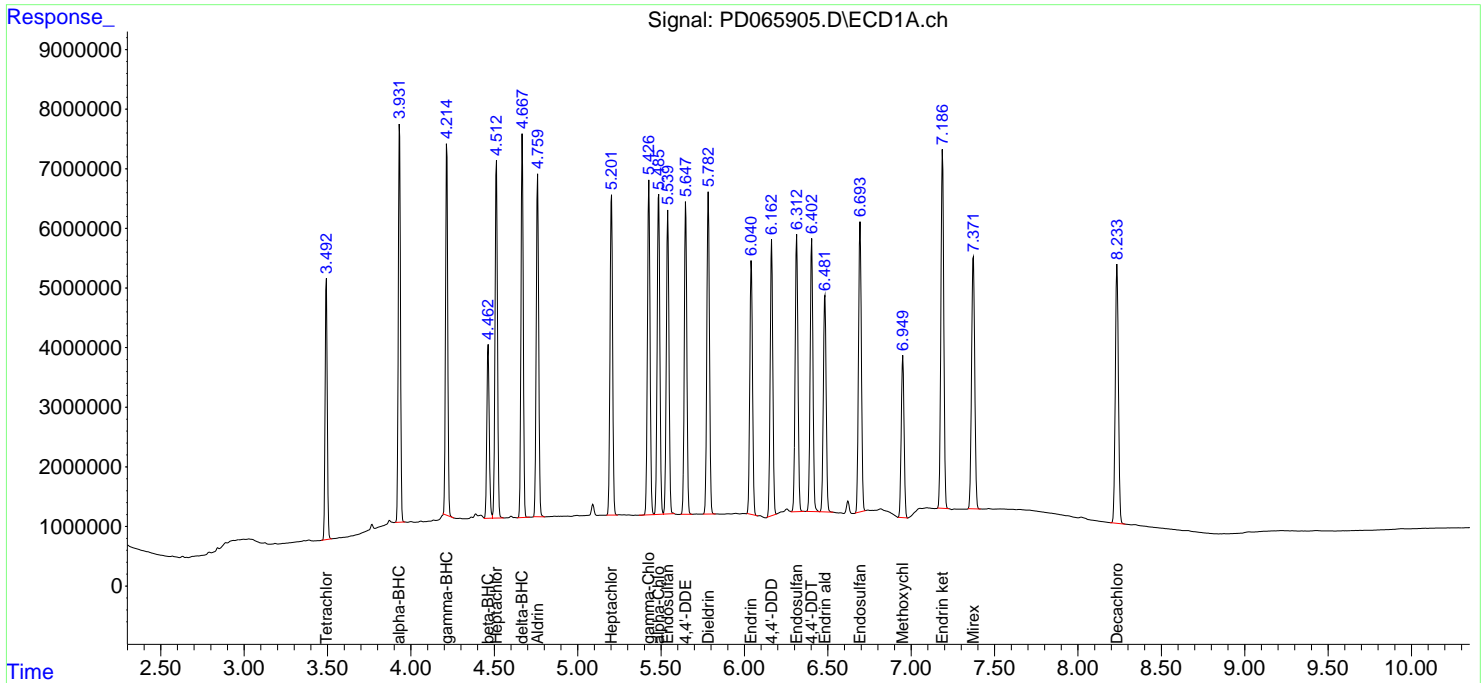
(f)=RT Delta > 1/2 Window (#)=Amounts differ by > 25% (m)=manual int.

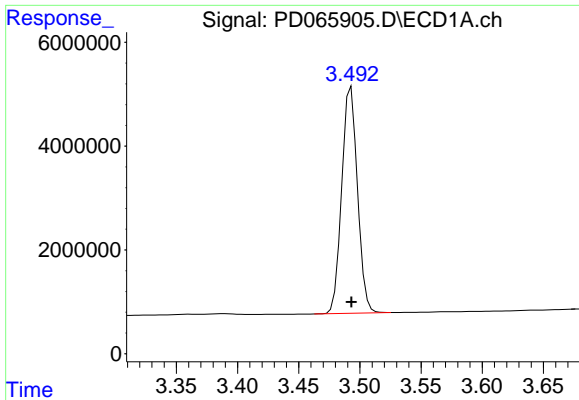
Data Path : Z:\pestpcbsrv\HPCHEM1\ECD_D\Data\PD092721\
 Data File : PD065905.D
 Signal(s) : Signal #1: ECD1A.ch Signal #2: ECD2B.ch
 Acq On : 27 Sep 2021 14:10
 Operator : AR\AJ
 Sample : PSTDCCC050
 Misc :
 ALS Vial : 4 Sample Multiplier: 1

Instrument :
 ECD_D
 ClientSampleId :
 PSTDCCC050

Integration File signal 1: autoint1.e
 Integration File signal 2: autoint2.e
 Quant Time: Sep 27 15:24:10 2021
 Quant Method : Z:\pestpcbsrv\HPCHEM1\ECD_D\Method\PD092221.M
 Quant Title : GC Extractables
 QLast Update : Thu Sep 23 12:18:33 2021
 Response via : Initial Calibration
 Integrator: ChemStation

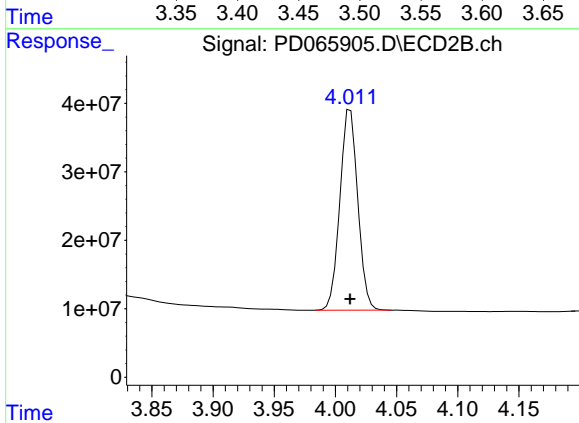
Volume Inj. : 2 µl
 Signal #1 Phase : ZB-MR2 Signal #2 Phase: ZB-MR1
 Signal #1 Info : 30M x 0.32mm x0.2 Signal #2 Info : 30M x 0.32mm x 0.50µm



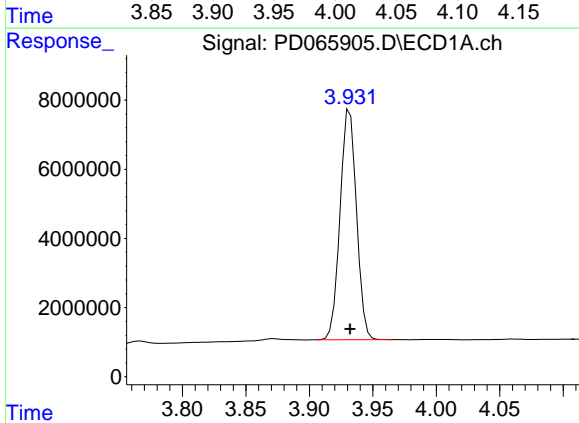


#1 Tetrachloro-m-xylene
 R.T.: 3.493 min
 Delta R.T.: 0.000 min
 Response: 39096349
 Conc: 52.79 ng/ml

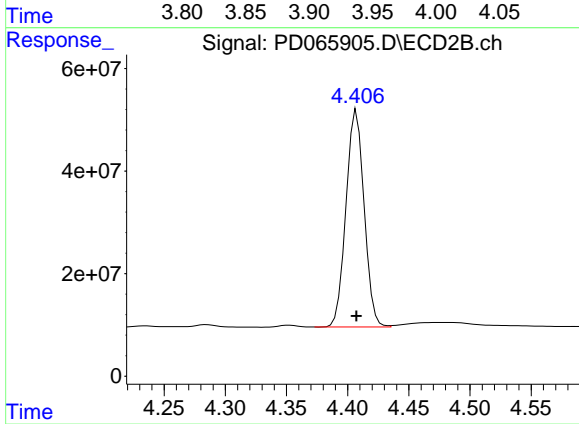
Instrument :
 ECD_D
 ClientSampleId :
 PSTDCCC050



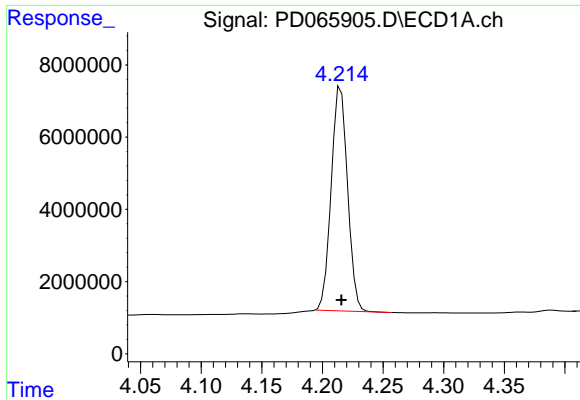
#1 Tetrachloro-m-xylene
 R.T.: 4.012 min
 Delta R.T.: 0.000 min
 Response: 298832102
 Conc: 52.04 ng/ml



#2 alpha-BHC
 R.T.: 3.932 min
 Delta R.T.: 0.000 min
 Response: 60031164
 Conc: 53.45 ng/ml

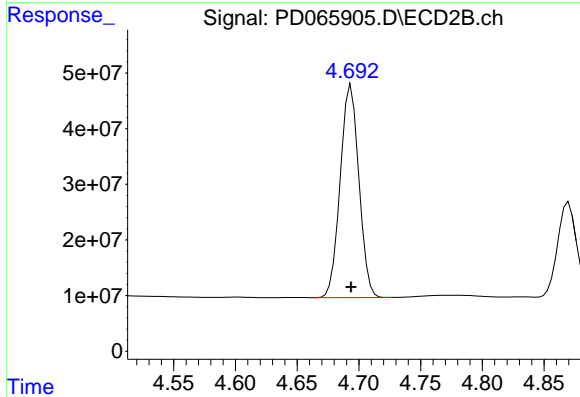


#2 alpha-BHC
 R.T.: 4.407 min
 Delta R.T.: 0.000 min
 Response: 436751891
 Conc: 51.94 ng/ml

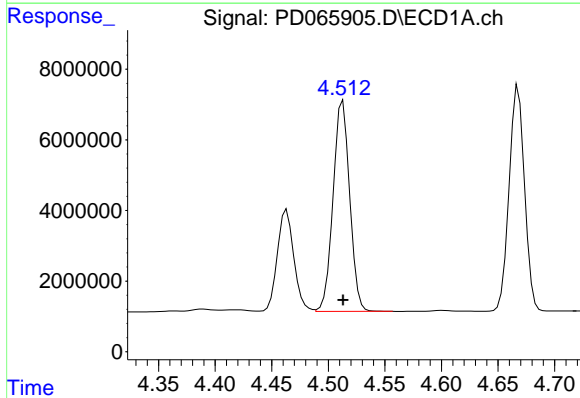


#3 gamma-BHC (Lindane)
 R.T.: 4.215 min
 Delta R.T.: 0.000 min
 Response: 58148231
 Conc: 51.85 ng/ml

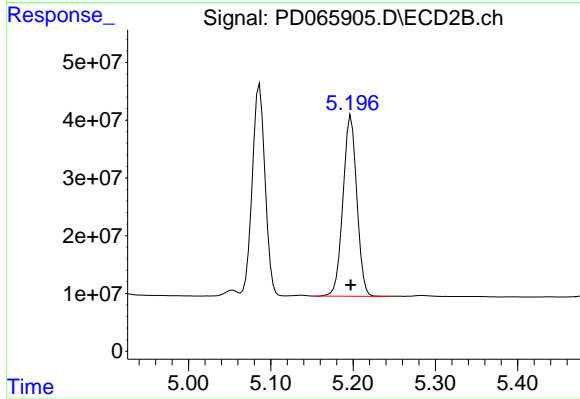
Instrument :
 ECD_D
 ClientSampleId :
 PSTDCCC050



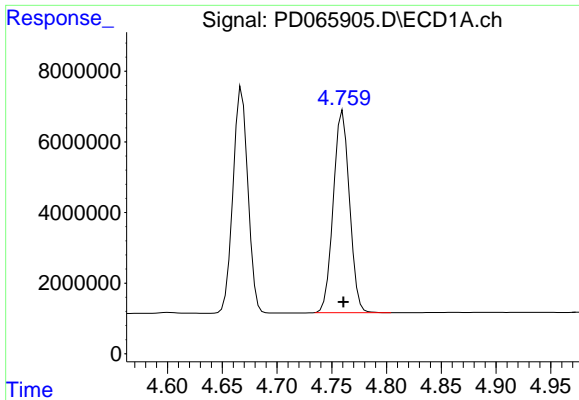
#3 gamma-BHC (Lindane)
 R.T.: 4.694 min
 Delta R.T.: 0.000 min
 Response: 402957226
 Conc: 52.16 ng/ml



#4 Heptachlor
 R.T.: 4.513 min
 Delta R.T.: 0.000 min
 Response: 61027960
 Conc: 51.16 ng/ml

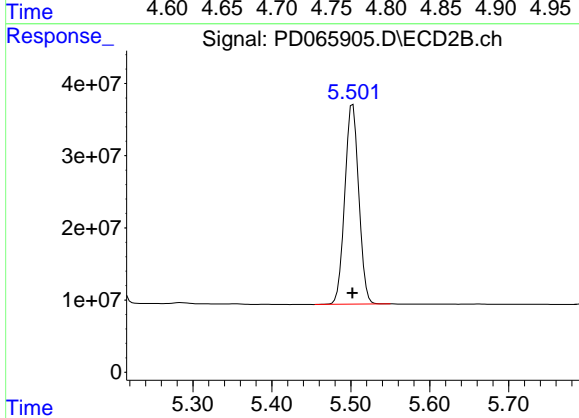


#4 Heptachlor
 R.T.: 5.197 min
 Delta R.T.: 0.000 min
 Response: 367160994
 Conc: 50.60 ng/ml

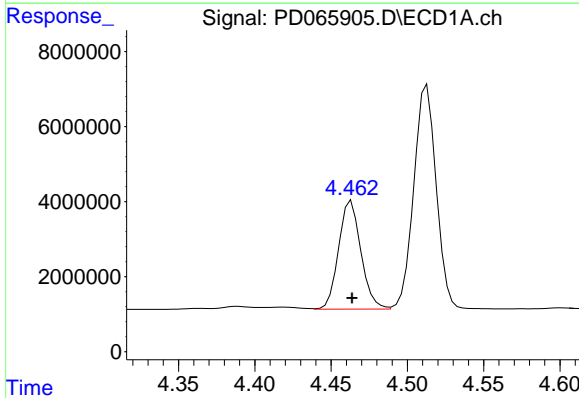


#5 Aldrin
 R.T.: 4.760 min
 Delta R.T.: 0.000 min
 Response: 58878315
 Conc: 52.63 ng/ml

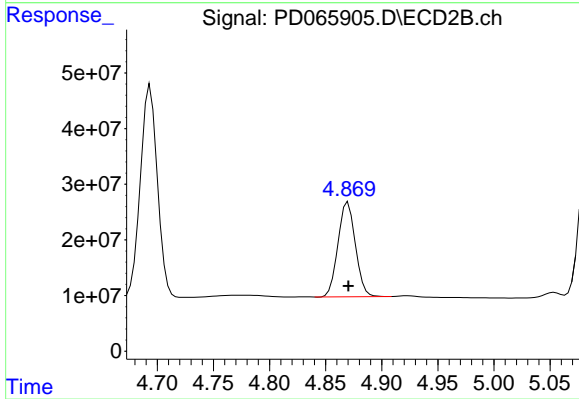
Instrument :
 ECD_D
 ClientSampleId :
 PSTDCCC050



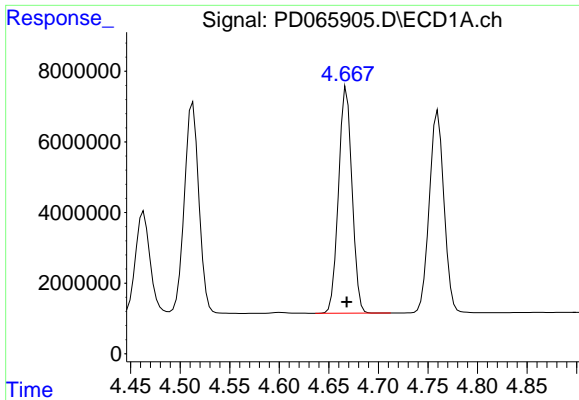
#5 Aldrin
 R.T.: 5.502 min
 Delta R.T.: 0.000 min
 Response: 341255407
 Conc: 50.72 ng/ml



#6 beta-BHC
 R.T.: 4.463 min
 Delta R.T.: 0.000 min
 Response: 29366488
 Conc: 51.44 ng/ml

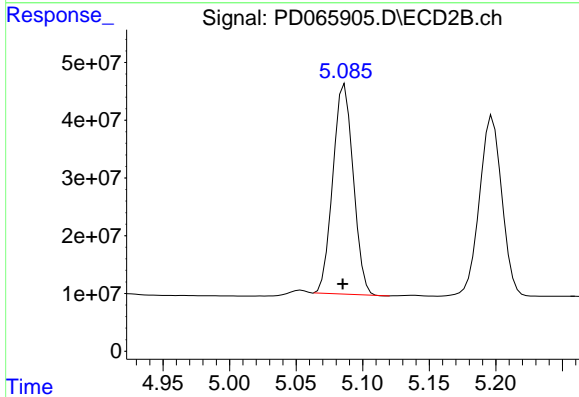


#6 beta-BHC
 R.T.: 4.870 min
 Delta R.T.: 0.000 min
 Response: 184391666
 Conc: 49.89 ng/ml

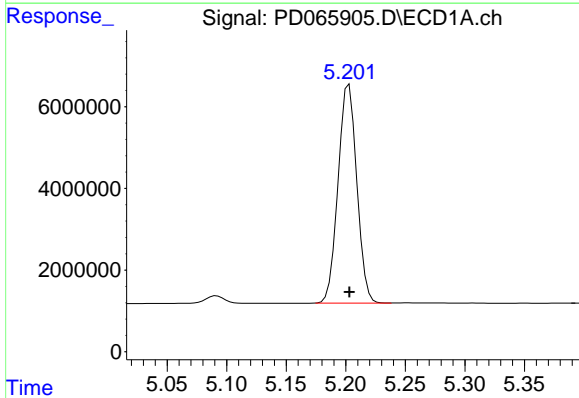


#7 delta-BHC
 R.T.: 4.668 min
 Delta R.T.: 0.000 min
 Response: 60521656
 Conc: 53.54 ng/ml

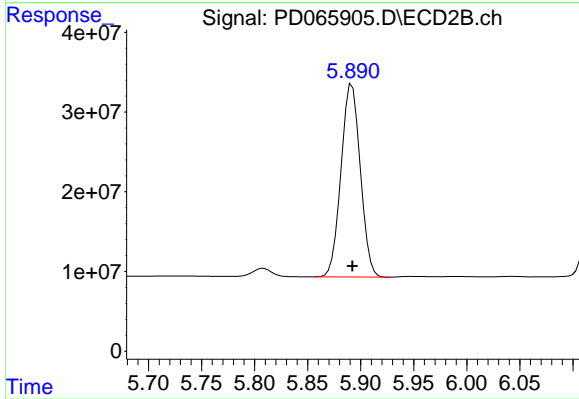
Instrument :
 ECD_D
 ClientSampleId :
 PSTDCCC050



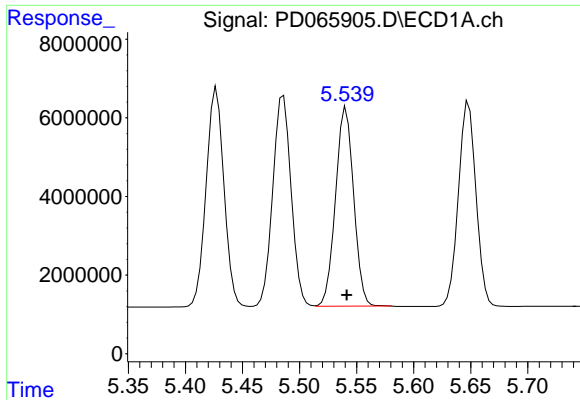
#7 delta-BHC
 R.T.: 5.087 min
 Delta R.T.: 0.001 min
 Response: 387046283
 Conc: 53.78 ng/ml



#8 Heptachlor epoxide
 R.T.: 5.203 min
 Delta R.T.: 0.000 min
 Response: 58684151
 Conc: 52.41 ng/ml

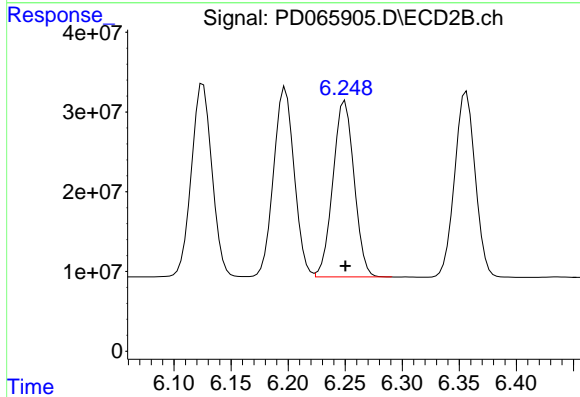


#8 Heptachlor epoxide
 R.T.: 5.892 min
 Delta R.T.: 0.000 min
 Response: 305560778
 Conc: 59.13 ng/ml

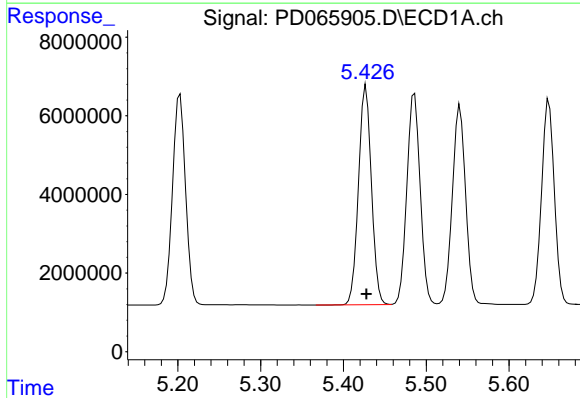


#9 Endosulfan I
 R.T.: 5.541 min
 Delta R.T.: 0.000 min
 Response: 56010466
 Conc: 51.50 ng/ml

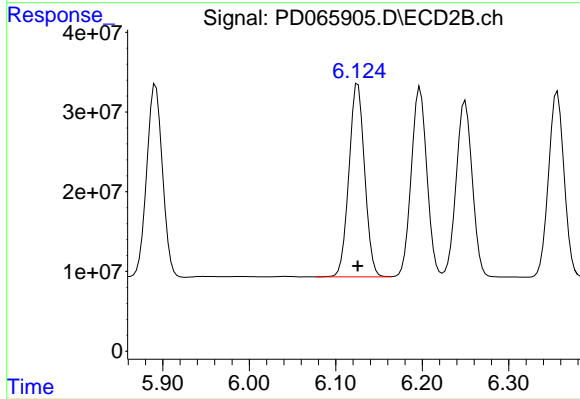
Instrument :
 ECD_D
 ClientSampleId :
 PSTDCCC050



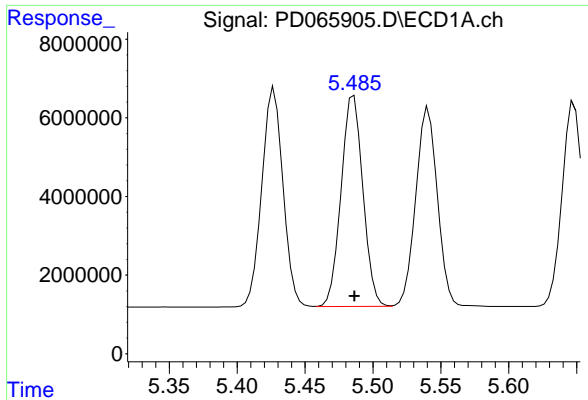
#9 Endosulfan I
 R.T.: 6.250 min
 Delta R.T.: 0.000 min
 Response: 285810072
 Conc: 51.71 ng/ml



#10 gamma-Chlordane
 R.T.: 5.427 min
 Delta R.T.: 0.000 min
 Response: 60461992
 Conc: 50.07 ng/ml

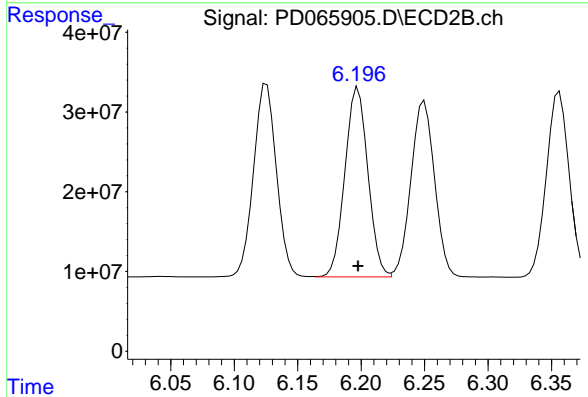


#10 gamma-Chlordane
 R.T.: 6.125 min
 Delta R.T.: 0.000 min
 Response: 304624156
 Conc: 50.79 ng/ml

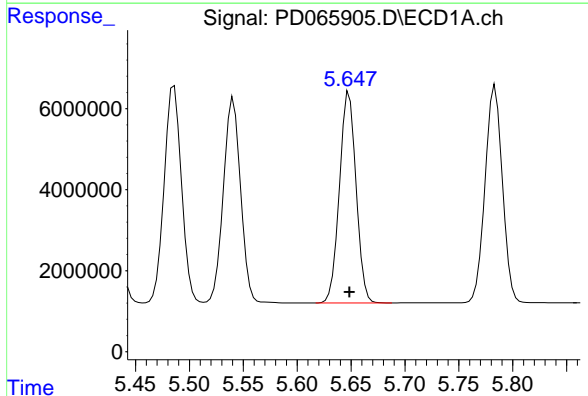


#11 alpha-Chlordane
R.T.: 5.486 min
Delta R.T.: 0.000 min
Response: 60027015
Conc: 50.71 ng/ml

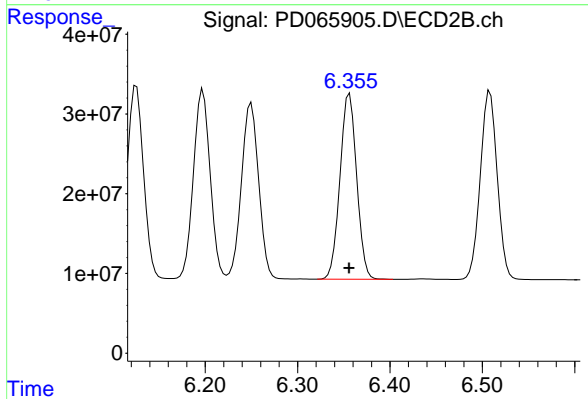
Instrument :
ECD_D
ClientSampleId :
PSTDCCC050



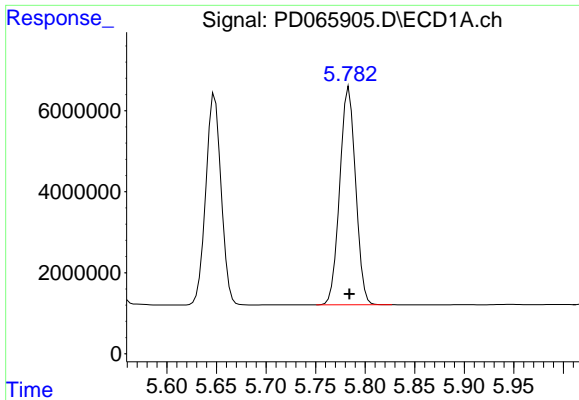
#11 alpha-Chlordane
R.T.: 6.198 min
Delta R.T.: 0.000 min
Response: 298990139
Conc: 49.81 ng/ml



#12 4,4'-DDE
R.T.: 5.648 min
Delta R.T.: 0.000 min
Response: 55966709
Conc: 51.42 ng/ml



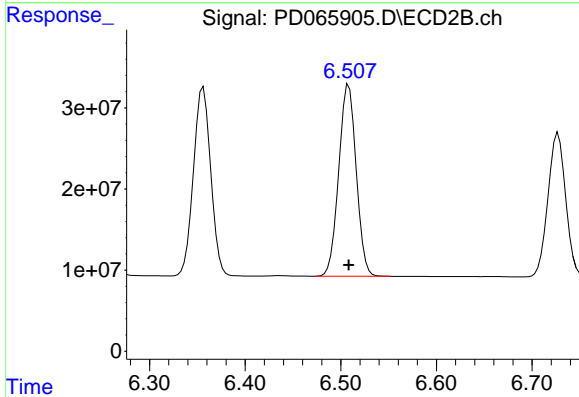
#12 4,4'-DDE
R.T.: 6.356 min
Delta R.T.: 0.000 min
Response: 292808248
Conc: 50.77 ng/ml



#13 Dieldrin

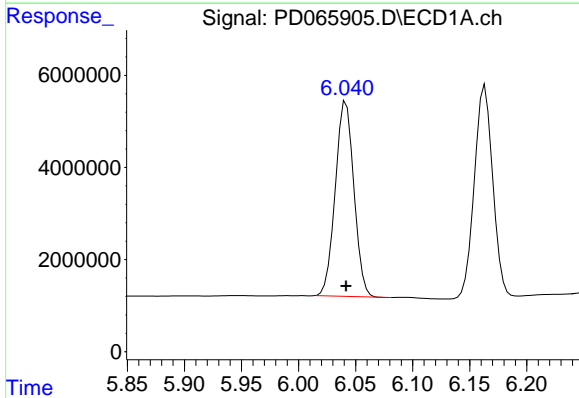
R.T.: 5.784 min
 Delta R.T.: 0.000 min
 Response: 59908236
 Conc: 51.69 ng/ml

Instrument :
 ECD_D
 ClientSampleId :
 PSTDCCC050



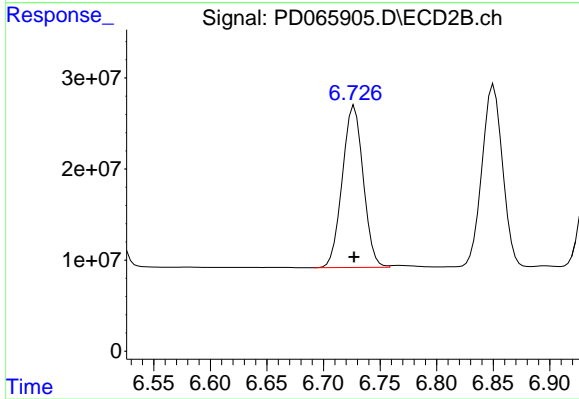
#13 Dieldrin

R.T.: 6.508 min
 Delta R.T.: 0.000 min
 Response: 300986798
 Conc: 51.07 ng/ml



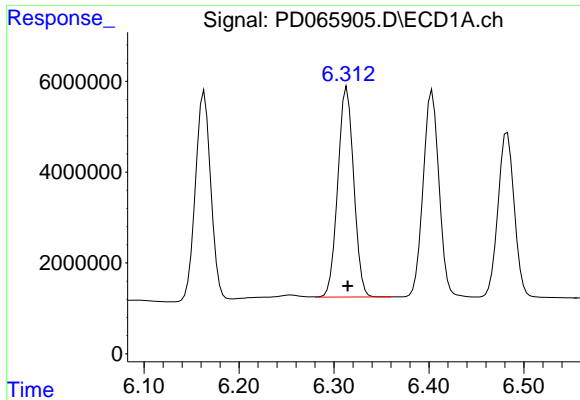
#14 Endrin

R.T.: 6.042 min
 Delta R.T.: 0.000 min
 Response: 48124586
 Conc: 45.48 ng/ml



#14 Endrin

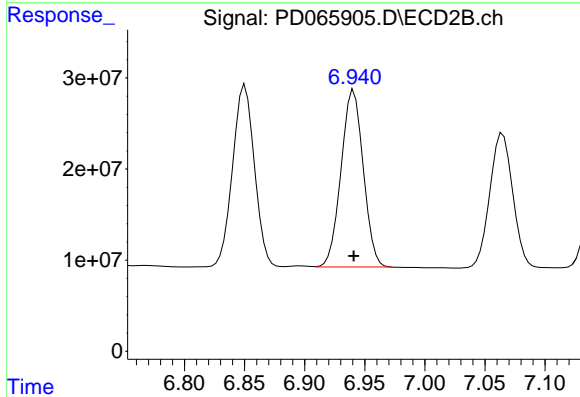
R.T.: 6.727 min
 Delta R.T.: 0.000 min
 Response: 228450095
 Conc: 46.34 ng/ml



#15 Endosulfan II

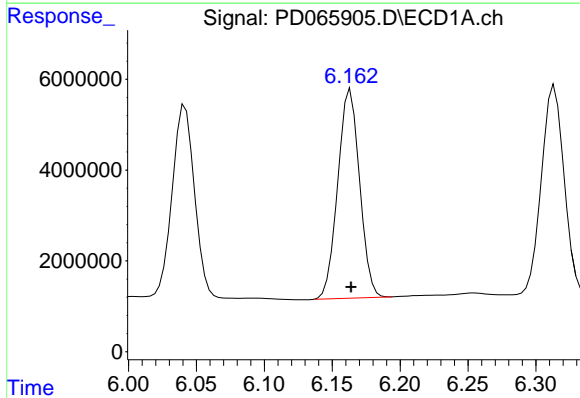
R.T.: 6.314 min
 Delta R.T.: 0.000 min
 Response: 53984499
 Conc: 49.97 ng/ml

Instrument :
 ECD_D
 ClientSampleId :
 PSTDCCC050



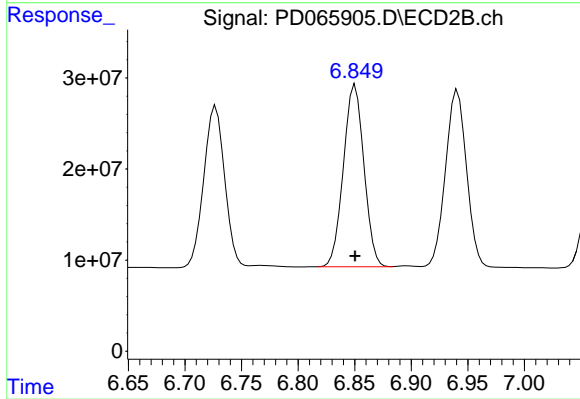
#15 Endosulfan II

R.T.: 6.941 min
 Delta R.T.: 0.000 min
 Response: 250292631
 Conc: 51.67 ng/ml



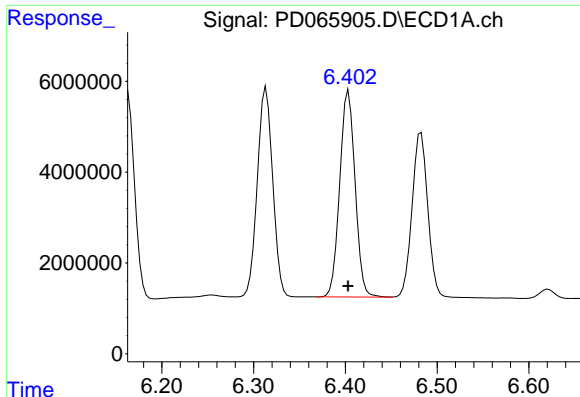
#16 4,4'-DDD

R.T.: 6.163 min
 Delta R.T.: 0.000 min
 Response: 51456264
 Conc: 52.46 ng/ml



#16 4,4'-DDD

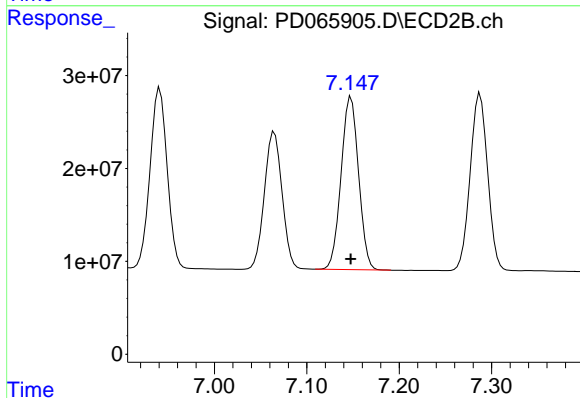
R.T.: 6.850 min
 Delta R.T.: 0.000 min
 Response: 252779785
 Conc: 51.43 ng/ml



#17 4,4'-DDT

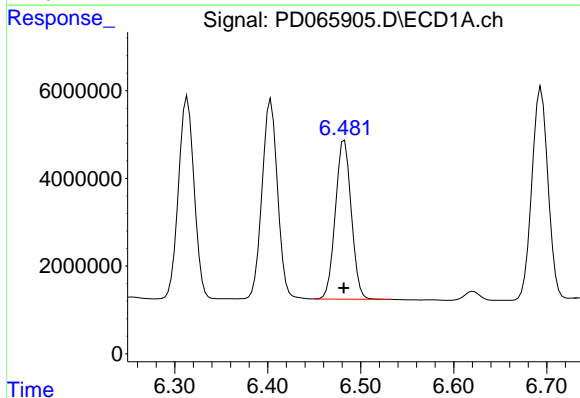
R.T.: 6.404 min
 Delta R.T.: 0.000 min
 Response: 52902989
 Conc: 48.06 ng/ml

Instrument :
 ECD_D
 ClientSampleId :
 PSTDCCC050



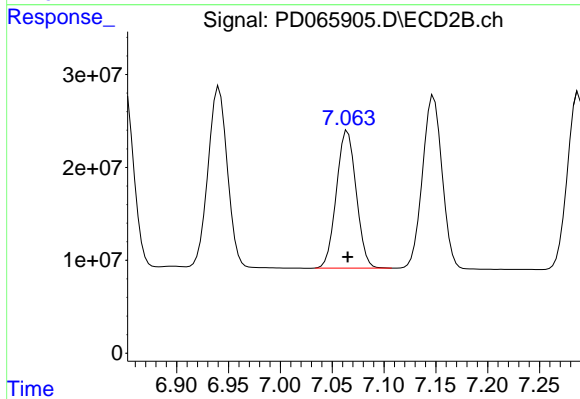
#17 4,4'-DDT

R.T.: 7.148 min
 Delta R.T.: 0.000 min
 Response: 244729156
 Conc: 48.45 ng/ml



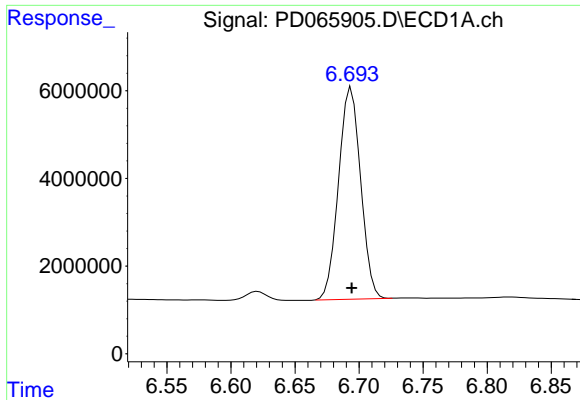
#18 Endrin aldehyde

R.T.: 6.483 min
 Delta R.T.: 0.000 min
 Response: 43217534
 Conc: 48.76 ng/ml



#18 Endrin aldehyde

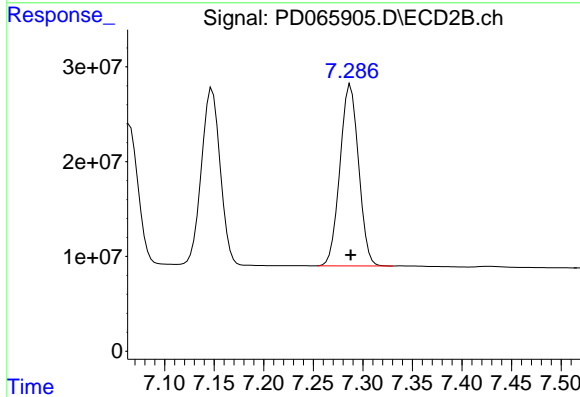
R.T.: 7.065 min
 Delta R.T.: 0.000 min
 Response: 196589220
 Conc: 50.21 ng/ml



#19 Endosulfan Sulfate

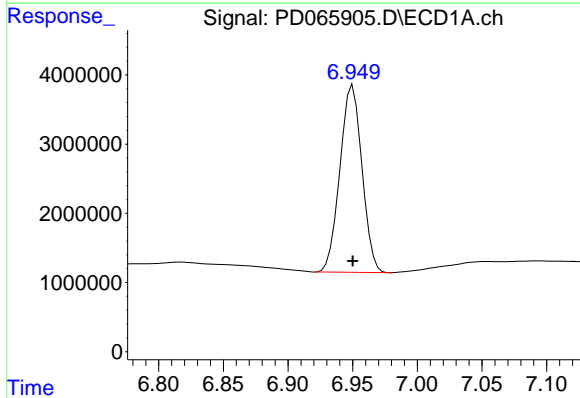
R.T.: 6.694 min
 Delta R.T.: 0.000 min
 Response: 57965145
 Conc: 50.79 ng/ml

Instrument :
 ECD_D
 ClientSampleId :
 PSTDCCC050



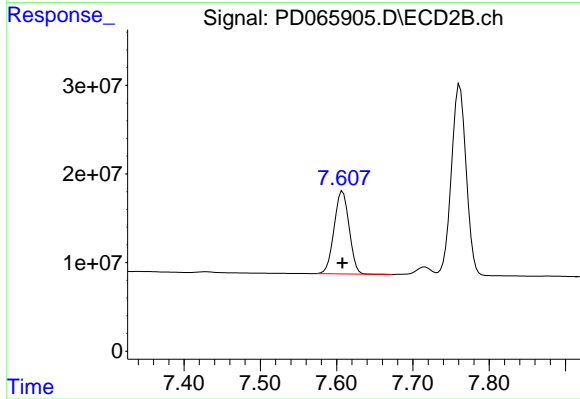
#19 Endosulfan Sulfate

R.T.: 7.288 min
 Delta R.T.: 0.000 min
 Response: 250705350
 Conc: 50.83 ng/ml



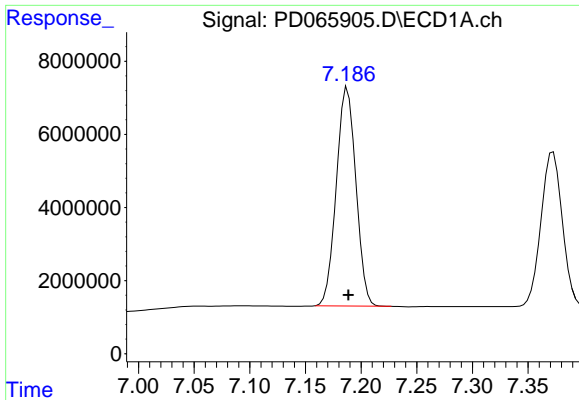
#20 Methoxychlor

R.T.: 6.950 min
 Delta R.T.: 0.000 min
 Response: 32014181
 Conc: 46.85 ng/ml



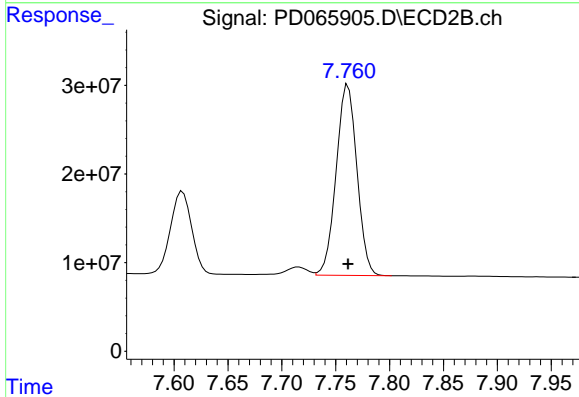
#20 Methoxychlor

R.T.: 7.608 min
 Delta R.T.: 0.000 min
 Response: 127083288
 Conc: 48.29 ng/ml

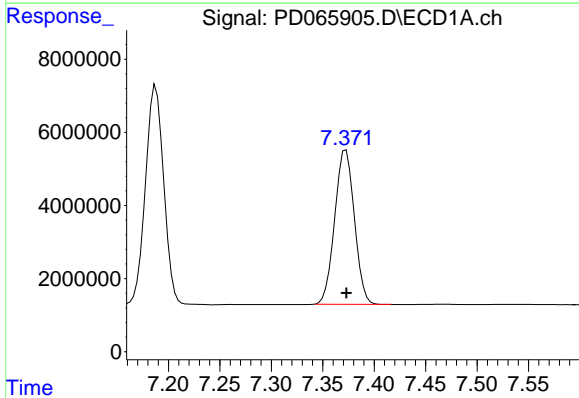


#21 Endrin ketone
R.T.: 7.188 min
Delta R.T.: 0.000 min
Response: 73337667
Conc: 52.06 ng/ml

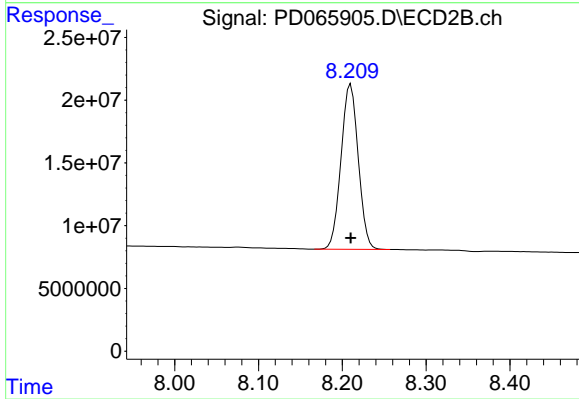
Instrument :
ECD_D
ClientSampleId :
PSTDCCC050



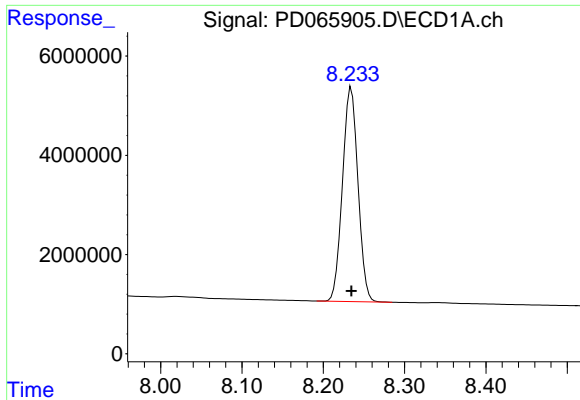
#21 Endrin ketone
R.T.: 7.761 min
Delta R.T.: 0.000 min
Response: 288385109
Conc: 50.57 ng/ml



#22 Mirex
R.T.: 7.373 min
Delta R.T.: 0.000 min
Response: 56100886
Conc: 46.47 ng/ml



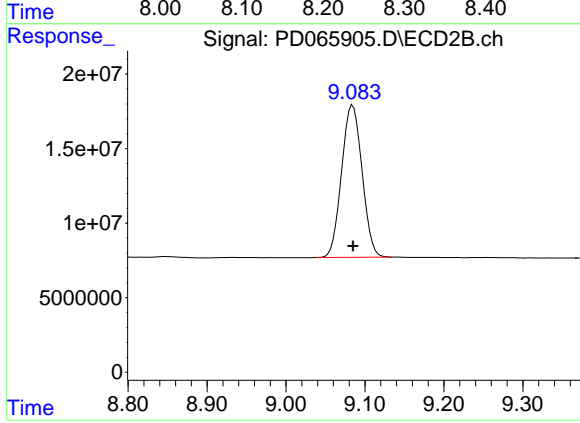
#22 Mirex
R.T.: 8.210 min
Delta R.T.: 0.000 min
Response: 187882783
Conc: 47.58 ng/ml



#28 Decachlorobiphenyl

R.T.: 8.234 min
Delta R.T.: 0.000 min
Response: 57094202
Conc: 41.80 ng/ml

Instrument :
ECD_D
ClientSampleId :
PSTDCCC050



#28 Decachlorobiphenyl

R.T.: 9.084 min
Delta R.T.: 0.000 min
Response: 184226172
Conc: 47.60 ng/ml