

Data Path : Z:\pestpcbsrv\HPCHEM1\ECD_D\Data\PD092721\
 Data File : PD065910.D
 Signal(s) : Signal #1: ECD1A.ch Signal #2: ECD2B.ch
 Acq On : 27 Sep 2021 17:11
 Operator : AR\AJ
 Sample : PB139371BS
 Misc : TOX BS
 ALS Vial : 20 Sample Multiplier: 1

Instrument :
 ECD_D
 ClientSampleId :
 PB139371BS

Integration File signal 1: autoint1.e
 Integration File signal 2: autoint2.e
 Quant Time: Sep 28 02:20:17 2021
 Quant Method : Z:\pestpcbsrv\HPCHEM1\ECD_D\Method\DTX092221.M
 Quant Title : GC Extractables
 QLast Update : Thu Sep 23 05:04:03 2021
 Response via : Initial Calibration
 Integrator: ChemStation

Volume Inj. : 1 µl
 Signal #1 Phase : ZB-MR2 Signal #2 Phase: ZB-MR1
 Signal #1 Info : 30M x 0.32mm x0.2 Signal #2 Info : 30M x 0.32mm x 0.50µm

Compound	RT#1	RT#2	Resp#1	Resp#2	ng/ml	ng/ml

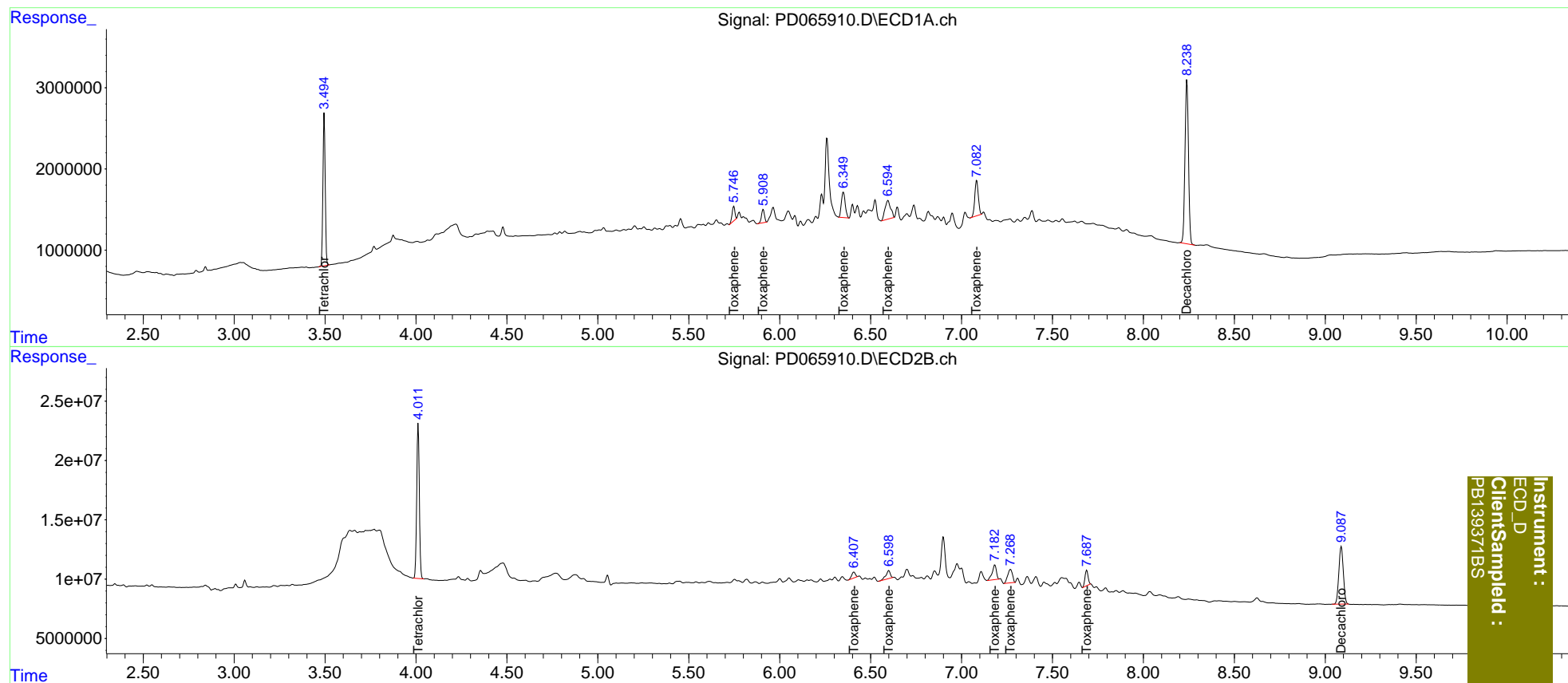
System Monitoring Compounds						
1) SA Tetrachlo...	3.495	4.012	16412371	130.9E6	20.503	21.182
7) SA Decachlor...	8.239	9.088	26839299	83198161	18.514	20.196
Target Compounds						
2) Toxaphene-1	5.748	6.408	1891499	6844794	205.866	212.480
3) Toxaphene-2	5.909	6.600	1863595	11025834	188.455	204.150
4) Toxaphene-3	6.350	7.183	4594632	19667688	208.733	195.452
5) Toxaphene-4	6.596	7.269	4916927	20561875	197.480	211.278
6) Toxaphene-5	7.083	7.689	5857939	15886909	195.995	204.210

(f)=RT Delta > 1/2 Window (#)=Amounts differ by > 25% (m)=manual int.

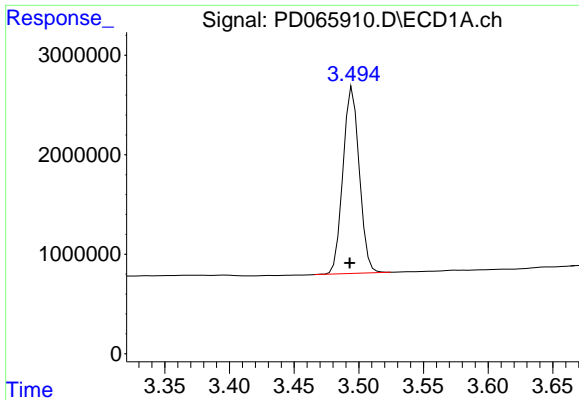
Data Path : Z:\pestpcbsrv\HPCHEM1\ECD_D\Data\PD092721\
 Data File : PD065910.D
 Signal(s) : Signal #1: ECD1A.ch Signal #2: ECD2B.ch
 Acq On : 27 Sep 2021 17:11
 Operator : AR\AJ
 Sample : PB139371BS
 Misc : TOX BS
 ALS Vial : 20 Sample Multiplier: 1

Integration File signal 1: autoint1.e
 Integration File signal 2: autoint2.e
 Quant Time: Sep 28 02:20:17 2021
 Quant Method : Z:\pestpcbsrv\HPCHEM1\ECD_D\Method\DTX092221.M
 Quant Title : GC Extractables
 QLast Update : Thu Sep 23 05:04:03 2021
 Response via : Initial Calibration
 Integrator: ChemStation

Volume Inj. : 1 µl
 Signal #1 Phase : ZB-MR2 Signal #2 Phase: ZB-MR1
 Signal #1 Info : 30M x 0.32mm x0.2 Signal #2 Info : 30M x 0.32mm x 0.50µm



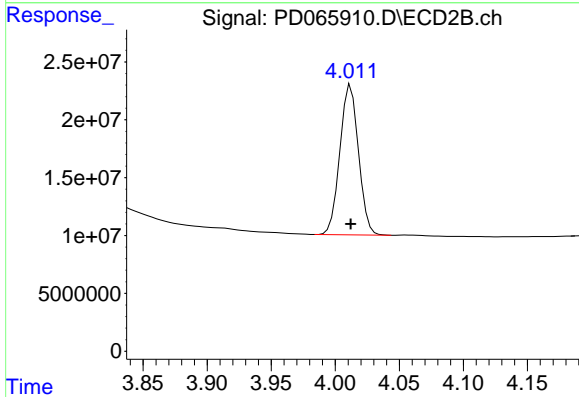
Instrument :
 ECD_D
 ClientSampleId :
 PB139371BS



#1 Tetrachloro-m-xylene

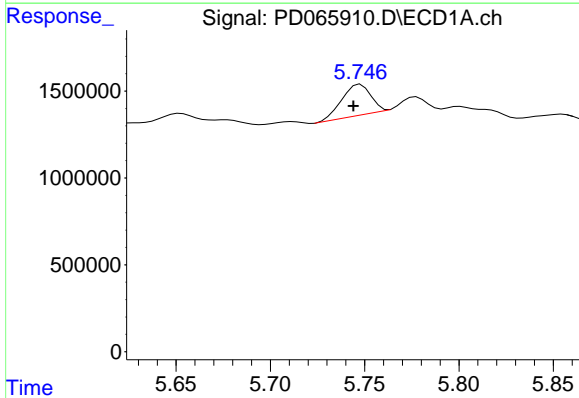
R.T.: 3.495 min
 Delta R.T.: 0.002 min
 Response: 16412371
 Conc: 20.50 ng/ml

Instrument :
 ECD_D
 ClientSampleId :
 PB139371BS



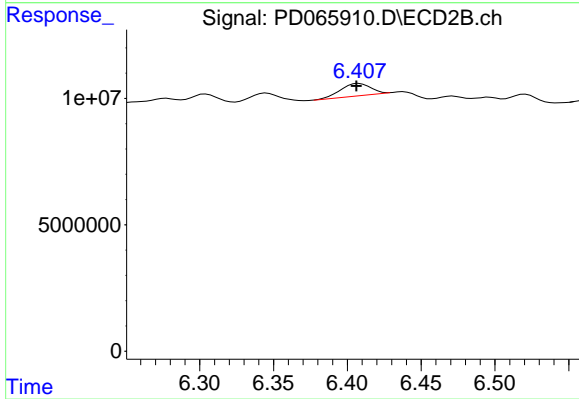
#1 Tetrachloro-m-xylene

R.T.: 4.012 min
 Delta R.T.: 0.000 min
 Response: 130873156
 Conc: 21.18 ng/ml



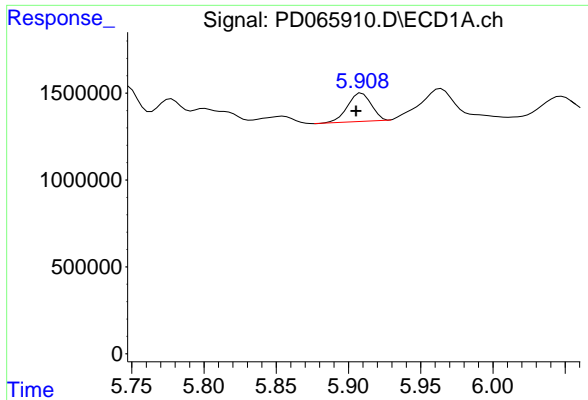
#2 Toxaphene-1

R.T.: 5.748 min
 Delta R.T.: 0.004 min
 Response: 1891499
 Conc: 205.87 ng/ml



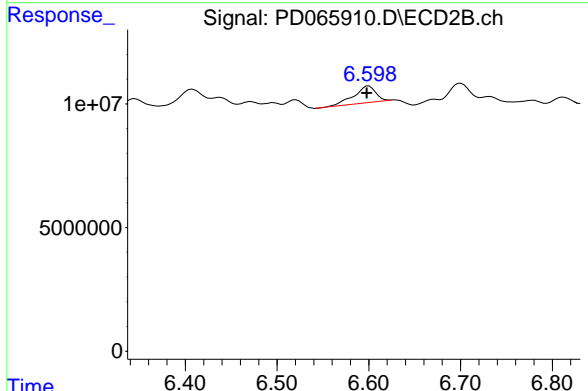
#2 Toxaphene-1

R.T.: 6.408 min
 Delta R.T.: 0.002 min
 Response: 6844794
 Conc: 212.48 ng/ml

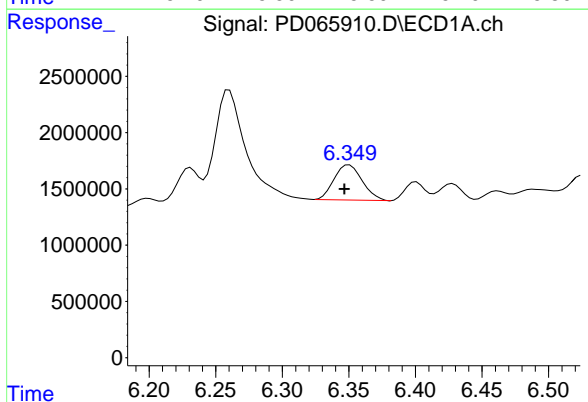


#3 Toxaphene-2
 R.T.: 5.909 min
 Delta R.T.: 0.004 min
 Response: 1863595
 Conc: 188.45 ng/ml

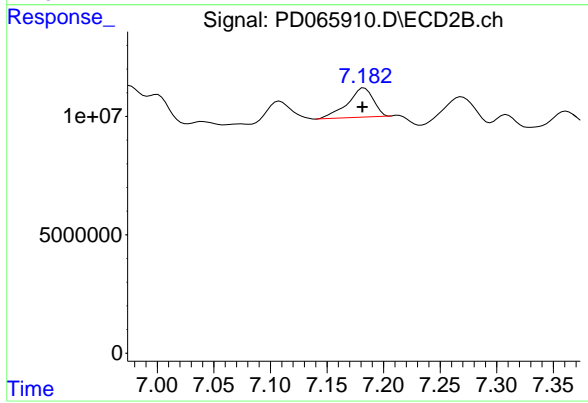
Instrument :
 ECD_D
 ClientSampleId :
 PB139371BS



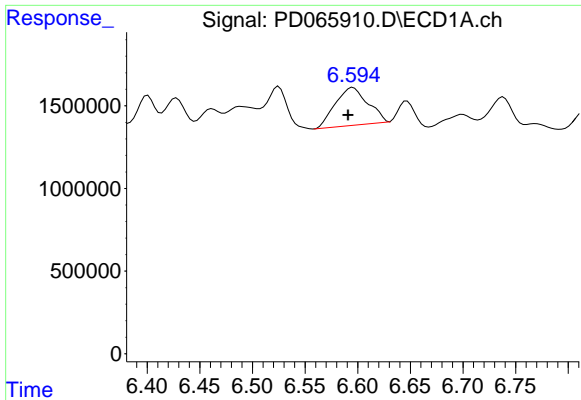
#3 Toxaphene-2
 R.T.: 6.600 min
 Delta R.T.: 0.002 min
 Response: 11025834
 Conc: 204.15 ng/ml



#4 Toxaphene-3
 R.T.: 6.350 min
 Delta R.T.: 0.004 min
 Response: 4594632
 Conc: 208.73 ng/ml



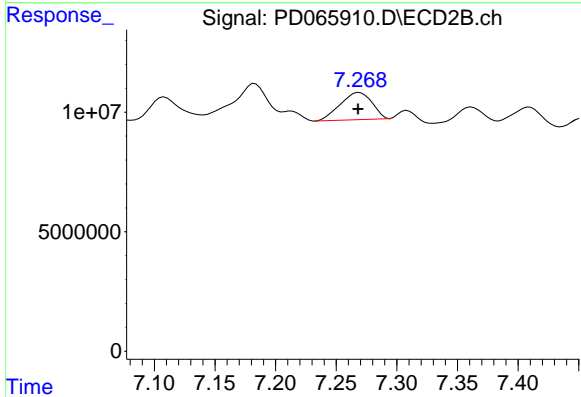
#4 Toxaphene-3
 R.T.: 7.183 min
 Delta R.T.: 0.002 min
 Response: 19667688
 Conc: 195.45 ng/ml



#5 Toxaphene-4

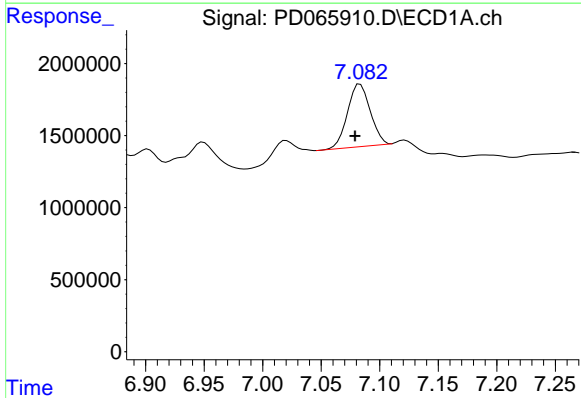
R.T.: 6.596 min
 Delta R.T.: 0.005 min
 Response: 4916927
 Conc: 197.48 ng/ml

Instrument :
 ECD_D
 ClientSampleId :
 PB139371BS



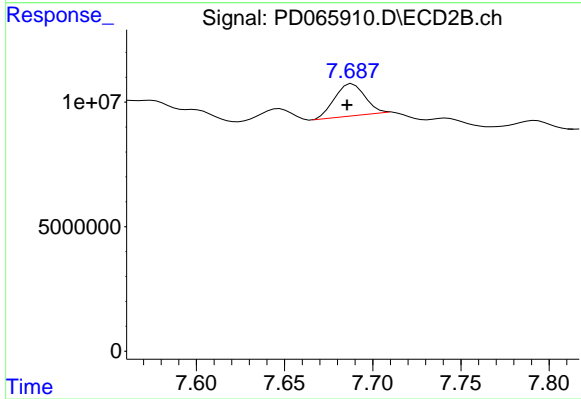
#5 Toxaphene-4

R.T.: 7.269 min
 Delta R.T.: 0.001 min
 Response: 20561875
 Conc: 211.28 ng/ml



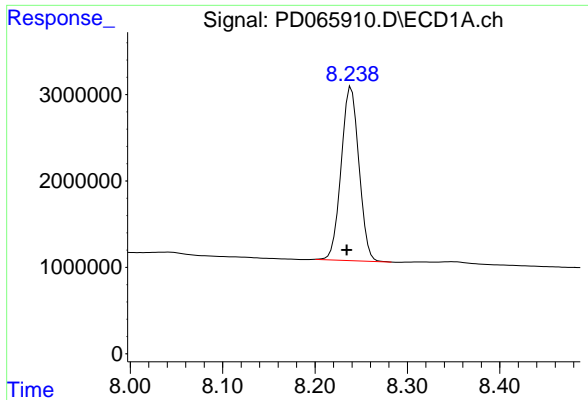
#6 Toxaphene-5

R.T.: 7.083 min
 Delta R.T.: 0.004 min
 Response: 5857939
 Conc: 196.00 ng/ml



#6 Toxaphene-5

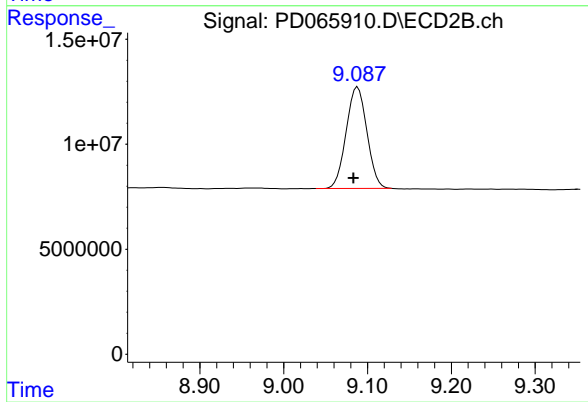
R.T.: 7.689 min
 Delta R.T.: 0.003 min
 Response: 15886909
 Conc: 204.21 ng/ml



#7 Decachlorobiphenyl

R.T.: 8.239 min
Delta R.T.: 0.005 min
Response: 26839299
Conc: 18.51 ng/ml

Instrument :
ECD_D
ClientSampleId :
PB139371BS



#7 Decachlorobiphenyl

R.T.: 9.088 min
Delta R.T.: 0.005 min
Response: 83198161
Conc: 20.20 ng/ml