

Data Path : Z:\pestpcbsrv\HPCHEM1\ECD\_D\Data\PD092721\  
 Data File : PD065918.D  
 Signal(s) : Signal #1: ECD1A.ch Signal #2: ECD2B.ch  
 Acq On : 27 Sep 2021 20:07  
 Operator : AR\AJ  
 Sample : PEM  
 Misc :  
 ALS Vial : 3 Sample Multiplier: 1

**Instrument :**  
 ECD\_D  
**ClientSampled :**  
 PEM

**Manual Integrations**  
**APPROVED**  
 mohammad  
 9/28/2021 11:27:13 AM

Integration File signal 1: autoint1.e  
 Integration File signal 2: autoint2.e  
 Quant Time: Sep 28 01:54:44 2021  
 Quant Method : Z:\pestpcbsrv\HPCHEM1\ECD\_D\Method\PD092221.M  
 Quant Title : GC Extractables  
 QLast Update : Thu Sep 23 12:18:33 2021  
 Response via : Initial Calibration  
 Integrator: ChemStation

Volume Inj. : 2 µl  
 Signal #1 Phase : ZB-MR2 Signal #2 Phase: ZB-MR1  
 Signal #1 Info : 30M x 0.32mm x0.2 Signal #2 Info : 30M x 0.32mm x 0.50µm

	Compound	RT#1	RT#2	Resp#1	Resp#2	ng/ml	ng/ml
-----							
System Monitoring Compounds							
1)	SA Tetrachlo...	3.493	4.013	17587535	135.7E6	23.749	23.637
28)	SA Decachlor...	8.235	9.087	28746971	89428293	21.045	23.107
Target Compounds							
2)	A alpha-BHC	3.932	4.408	12480861	98493290	11.113	11.714
3)	MA gamma-BHC...	4.216	4.694	12924055	91535305	11.525	11.848
6)	B beta-BHC	4.465	4.871	9198750	47897618	16.114	12.960
12)	B 4,4'-DDE	5.648	6.358	291738	1616791	0.268m	0.280
14)	MA Endrin	6.042	6.729	54603922	244.9E6	51.603	49.674
16)	A 4,4'-DDD	6.164	6.851	3980275	21774707	4.058	4.431
17)	MA 4,4'-DDT	6.405	7.149	116.1E6	473.9E6	105.517	93.812
18)	B Endrin al...	6.483	7.066	2117116	7071940	2.389	1.806
20)	A Methoxychlor	6.950	7.609	164.1E6	590.1E6	240.147	224.243
21)	B Endrin ke...	7.186	7.762	7350876	22510200	5.218m	3.947m

(f)=RT Delta > 1/2 Window (#)=Amounts differ by > 25% (m)=manual int.

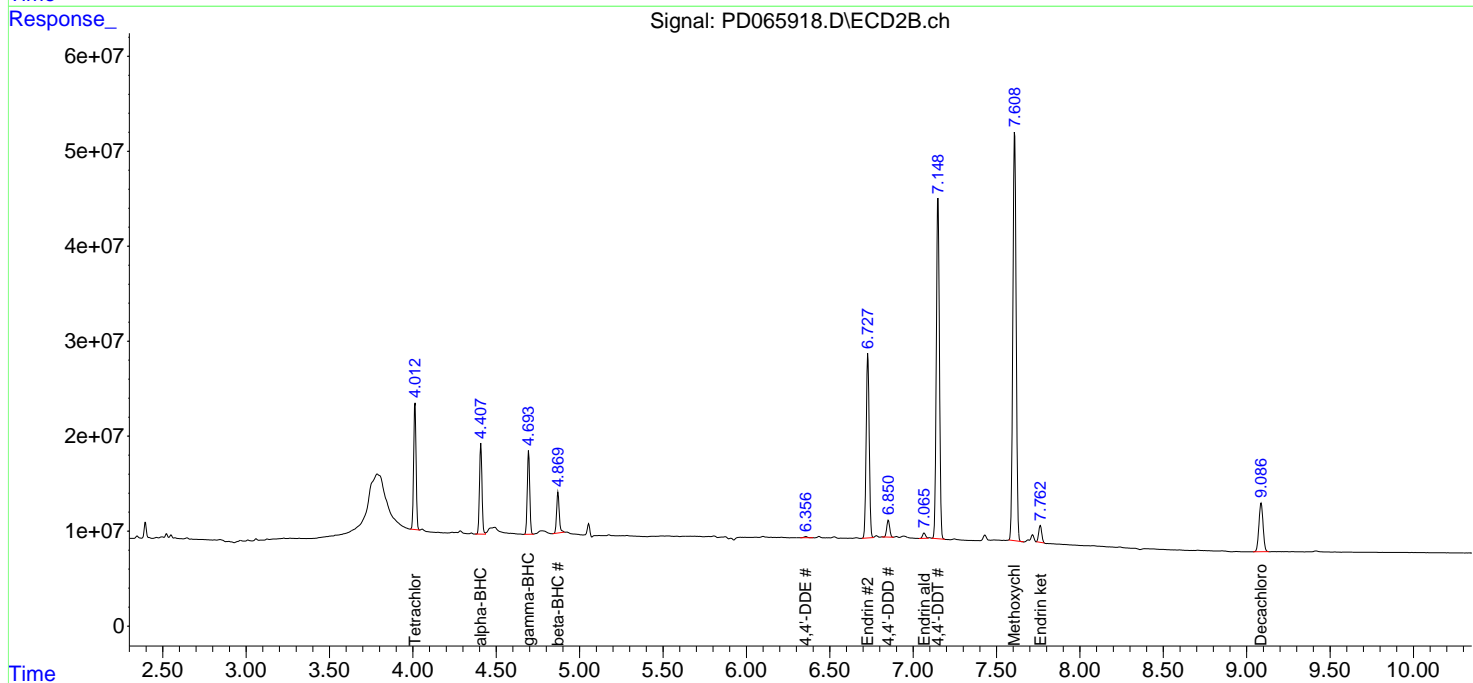
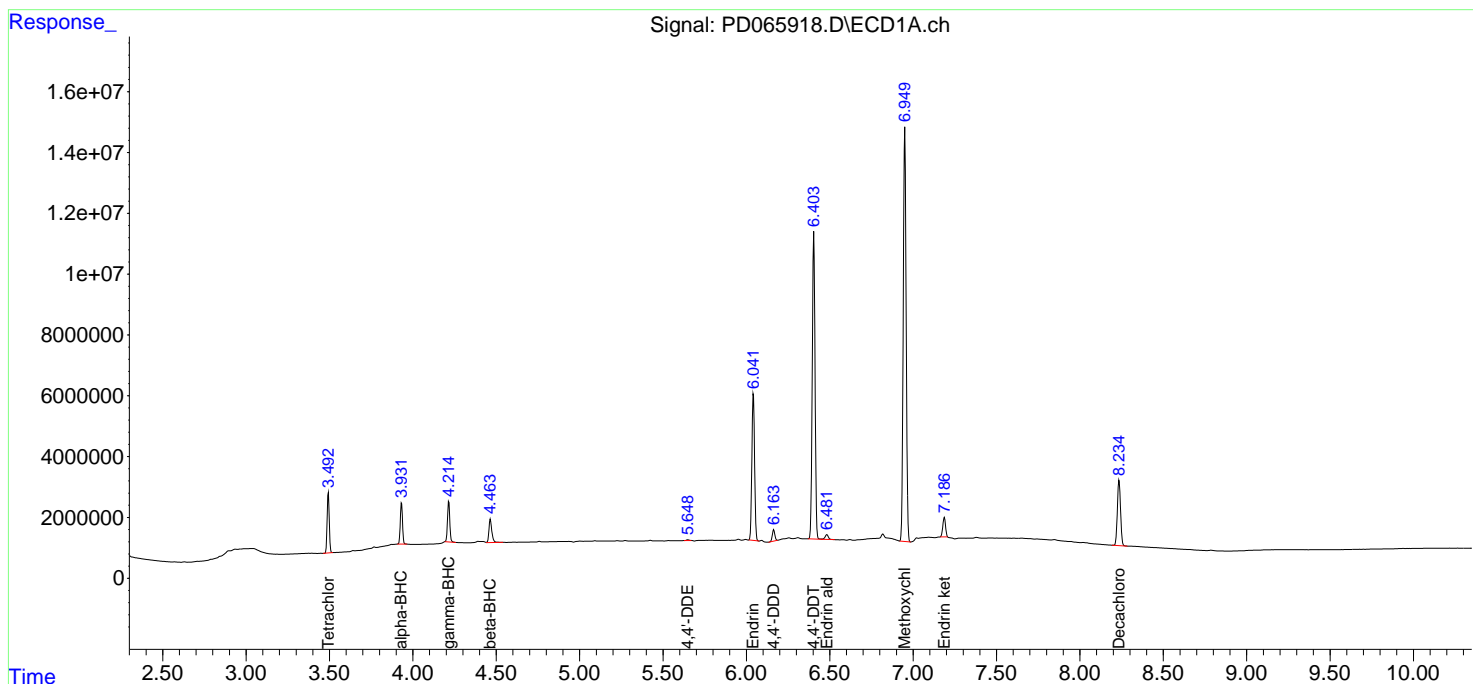
Data Path : Z:\pestpcbsrv\HPCHEM1\ECD\_D\Data\PD092721\  
 Data File : PD065918.D  
 Signal(s) : Signal #1: ECD1A.ch Signal #2: ECD2B.ch  
 Acq On : 27 Sep 2021 20:07  
 Operator : AR\AJ  
 Sample : PEM  
 Misc :  
 ALS Vial : 3 Sample Multiplier: 1

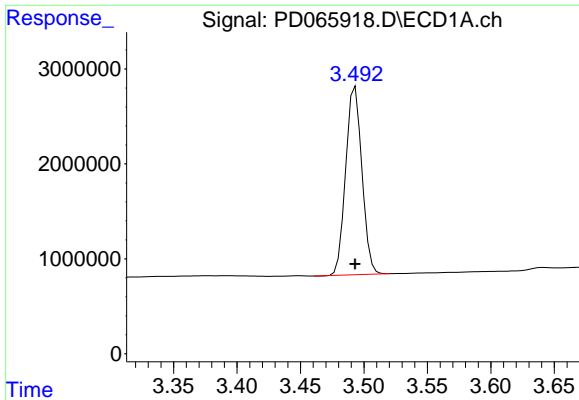
Instrument :  
 ECD\_D  
 Client Sampled :  
 PEM

Manual Integrations  
**APPROVED**  
 mohammad  
 9/28/2021 11:27:13 AM

Integration File signal 1: autoint1.e  
 Integration File signal 2: autoint2.e  
 Quant Time: Sep 28 01:54:44 2021  
 Quant Method : Z:\pestpcbsrv\HPCHEM1\ECD\_D\Method\PD092221.M  
 Quant Title : GC Extractables  
 QLast Update : Thu Sep 23 12:18:33 2021  
 Response via : Initial Calibration  
 Integrator: ChemStation

Volume Inj. : 2 µl  
 Signal #1 Phase : ZB-MR2 Signal #2 Phase: ZB-MR1  
 Signal #1 Info : 30M x 0.32mm x0.2 Signal #2 Info : 30M x 0.32mm x 0.50µm





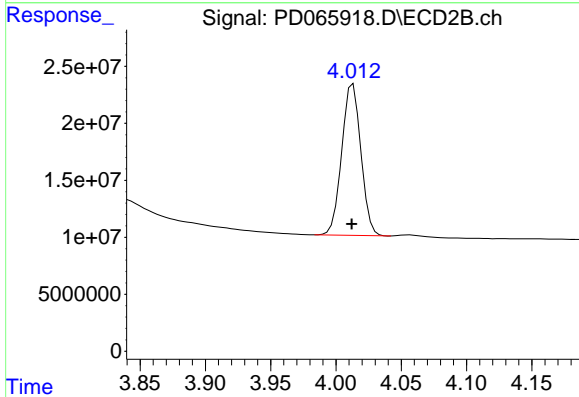
#1 Tetrachloro-m-xylene

R.T.: 3.493 min  
 Delta R.T.: 0.000 min  
 Response: 17587535  
 Conc: 23.75 ng/ml

Instrument :  
 ECD\_D  
 ClientSampled :  
 PEM

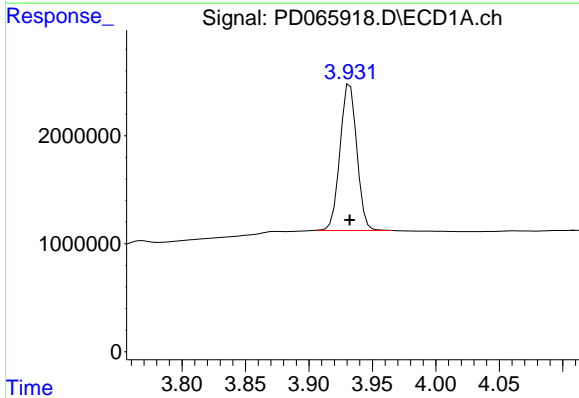
Manual Integrations  
 APPROVED

mohammad  
 9/28/2021 11:27:13 AM



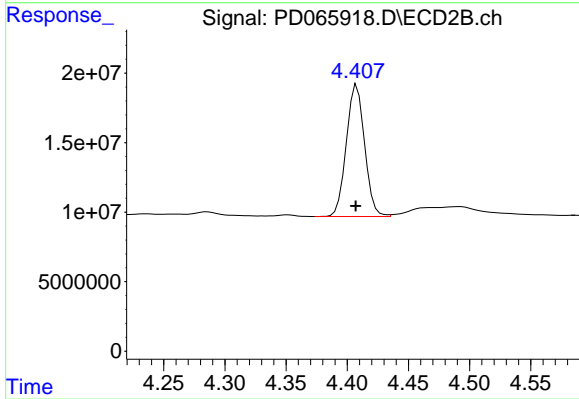
#1 Tetrachloro-m-xylene

R.T.: 4.013 min  
 Delta R.T.: 0.001 min  
 Response: 135726034  
 Conc: 23.64 ng/ml



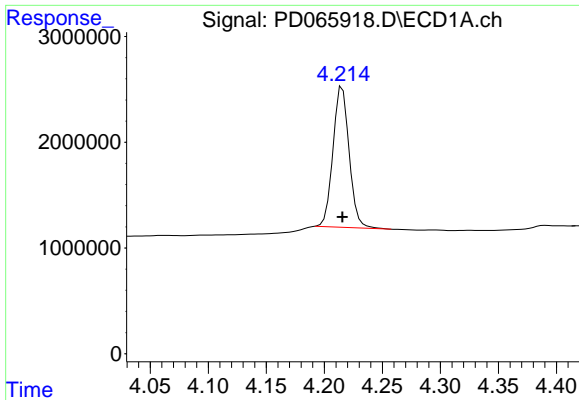
#2 alpha-BHC

R.T.: 3.932 min  
 Delta R.T.: 0.000 min  
 Response: 12480861  
 Conc: 11.11 ng/ml



#2 alpha-BHC

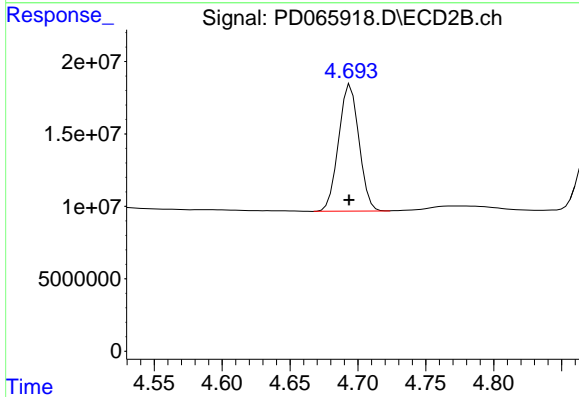
R.T.: 4.408 min  
 Delta R.T.: 0.000 min  
 Response: 98493290  
 Conc: 11.71 ng/ml



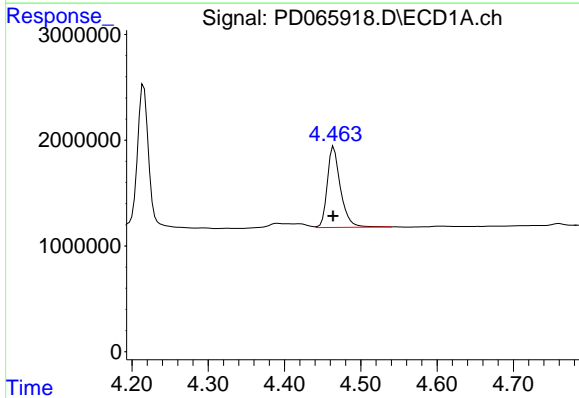
#3 gamma-BHC (Lindane)  
 R.T.: 4.216 min  
 Delta R.T.: 0.000 min  
 Response: 12924055  
 Conc: 11.53 ng/ml

Instrument :  
 ECD\_D  
 ClientSampled :  
 PEM

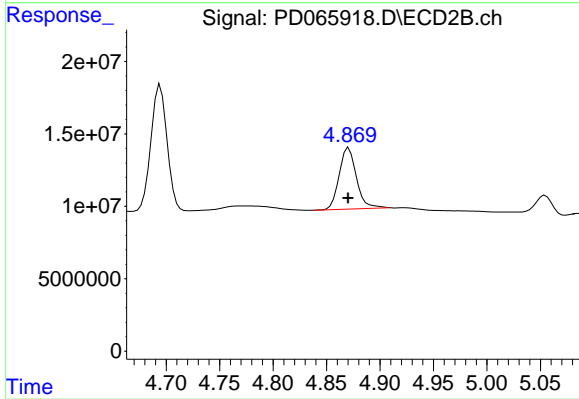
Manual Integrations  
 APPROVED  
 mohammad  
 9/28/2021 11:27:13 AM



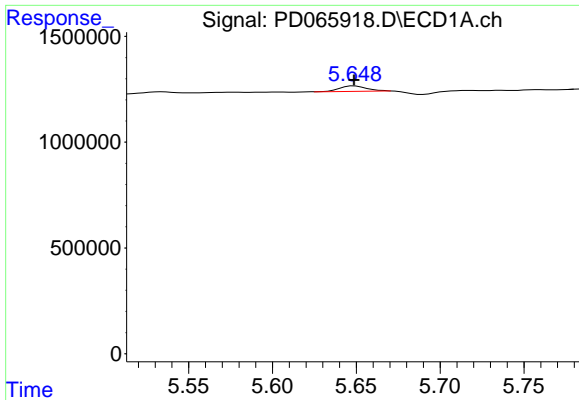
#3 gamma-BHC (Lindane)  
 R.T.: 4.694 min  
 Delta R.T.: 0.000 min  
 Response: 91535305  
 Conc: 11.85 ng/ml



#6 beta-BHC  
 R.T.: 4.465 min  
 Delta R.T.: 0.001 min  
 Response: 9198750  
 Conc: 16.11 ng/ml



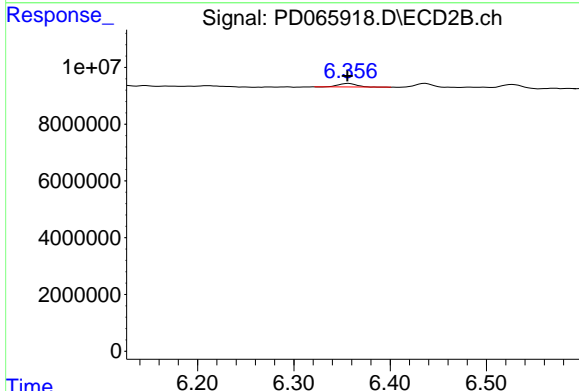
#6 beta-BHC  
 R.T.: 4.871 min  
 Delta R.T.: 0.000 min  
 Response: 47897618  
 Conc: 12.96 ng/ml



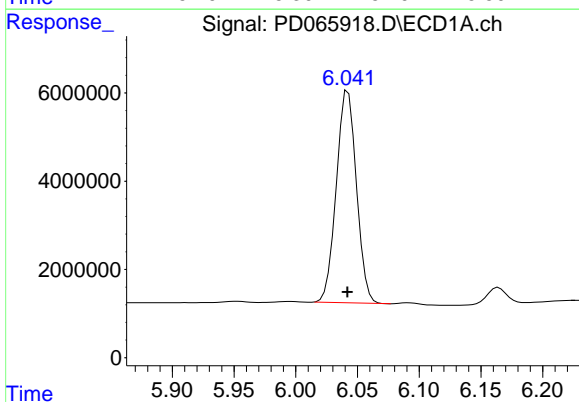
#12 4,4'-DDE  
 R.T.: 5.648 min  
 Delta R.T.: -0.001 min  
 Response: 291738  
 Conc: 0.27 ng/ml m

**Instrument :**  
 ECD\_D  
**ClientSampled :**  
 PEM

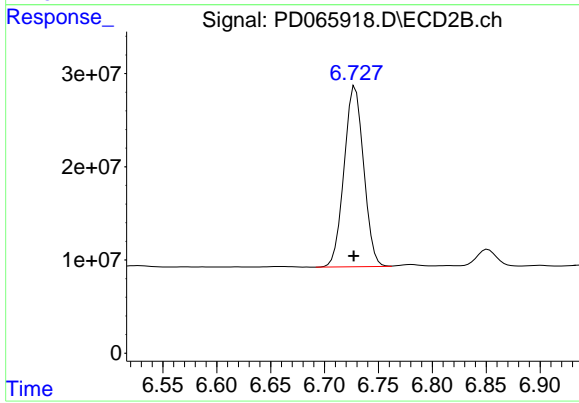
**Manual Integrations**  
**APPROVED**  
 mohammad  
 9/28/2021 11:27:13 AM



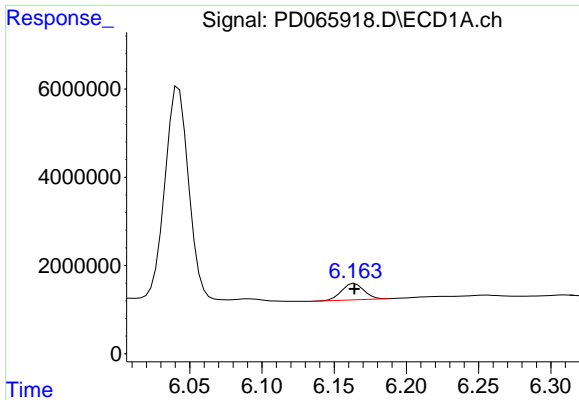
#12 4,4'-DDE  
 R.T.: 6.358 min  
 Delta R.T.: 0.002 min  
 Response: 1616791  
 Conc: 0.28 ng/ml



#14 Endrin  
 R.T.: 6.042 min  
 Delta R.T.: 0.000 min  
 Response: 54603922  
 Conc: 51.60 ng/ml



#14 Endrin  
 R.T.: 6.729 min  
 Delta R.T.: 0.001 min  
 Response: 244897132  
 Conc: 49.67 ng/ml



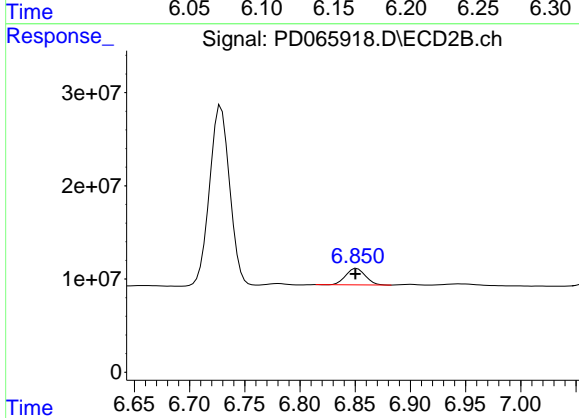
#16 4,4'-DDD

R.T.: 6.164 min  
Delta R.T.: 0.000 min  
Response: 3980275  
Conc: 4.06 ng/ml

Instrument :  
ECD\_D  
ClientSampled :  
PEM

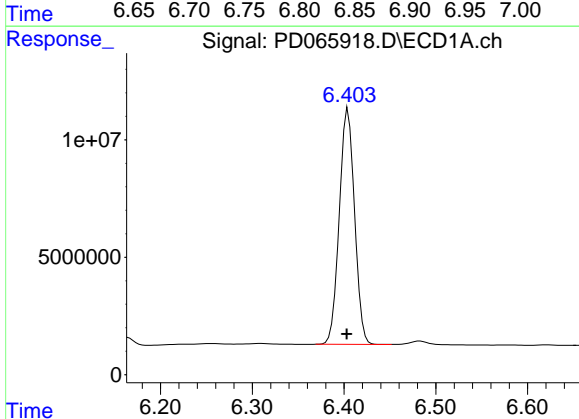
Manual Integrations  
APPROVED

mohammad  
9/28/2021 11:27:13 AM



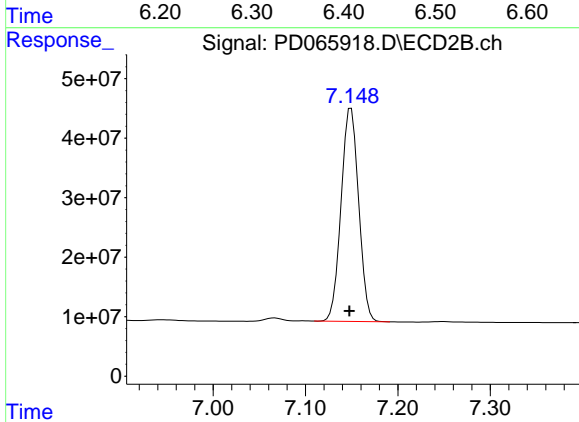
#16 4,4'-DDD

R.T.: 6.851 min  
Delta R.T.: 0.001 min  
Response: 21774707  
Conc: 4.43 ng/ml



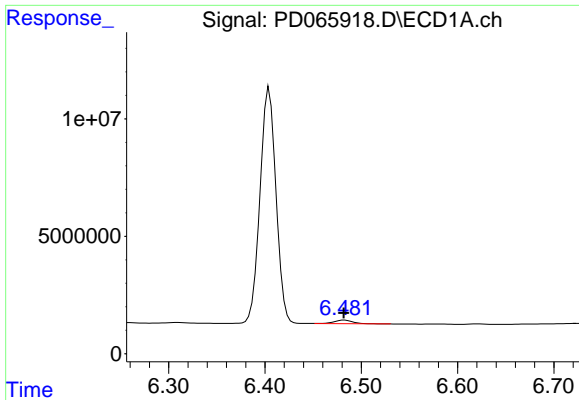
#17 4,4'-DDT

R.T.: 6.405 min  
Delta R.T.: 0.002 min  
Response: 116142669  
Conc: 105.52 ng/ml



#17 4,4'-DDT

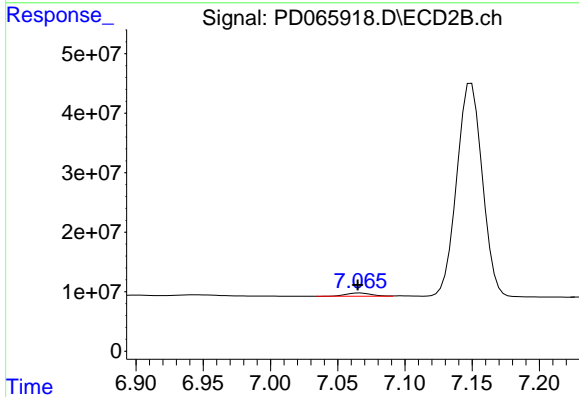
R.T.: 7.149 min  
Delta R.T.: 0.002 min  
Response: 473879000  
Conc: 93.81 ng/ml



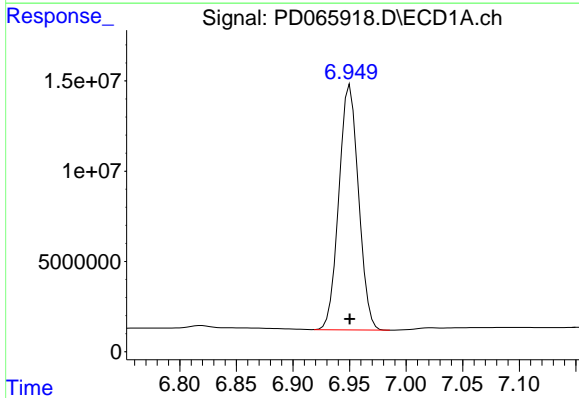
#18 Endrin aldehyde  
 R.T.: 6.483 min  
 Delta R.T.: 0.001 min  
 Response: 2117116  
 Conc: 2.39 ng/ml

**Instrument :**  
 ECD\_D  
**ClientSampled :**  
 PEM

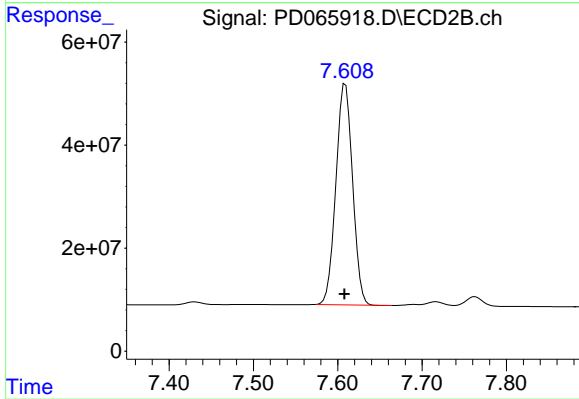
**Manual Integrations**  
**APPROVED**  
 mohammad  
 9/28/2021 11:27:13 AM



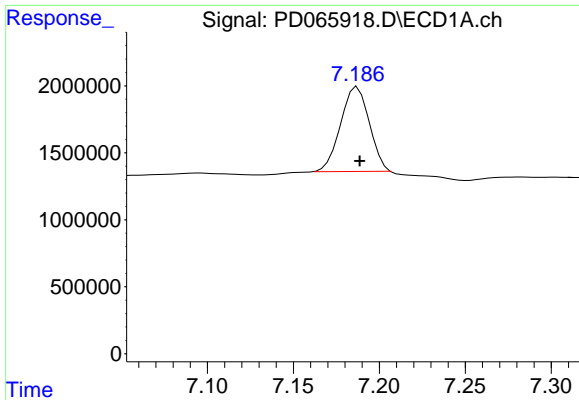
#18 Endrin aldehyde  
 R.T.: 7.066 min  
 Delta R.T.: 0.001 min  
 Response: 7071940  
 Conc: 1.81 ng/ml



#20 Methoxychlor  
 R.T.: 6.950 min  
 Delta R.T.: 0.000 min  
 Response: 164107105  
 Conc: 240.15 ng/ml



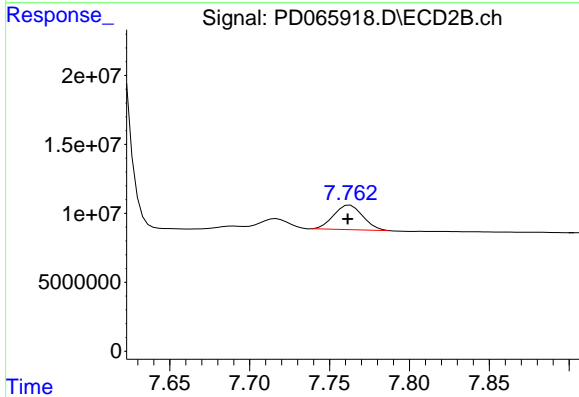
#20 Methoxychlor  
 R.T.: 7.609 min  
 Delta R.T.: 0.001 min  
 Response: 590121599  
 Conc: 224.24 ng/ml



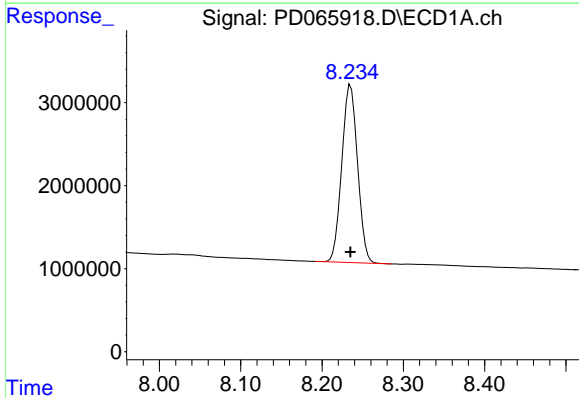
#21 Endrin ketone  
 R.T.: 7.186 min  
 Delta R.T.: -0.003 min  
 Response: 7350876  
 Conc: 5.22 ng/ml m

Instrument :  
 ECD\_D  
 ClientSampled :  
 PEM

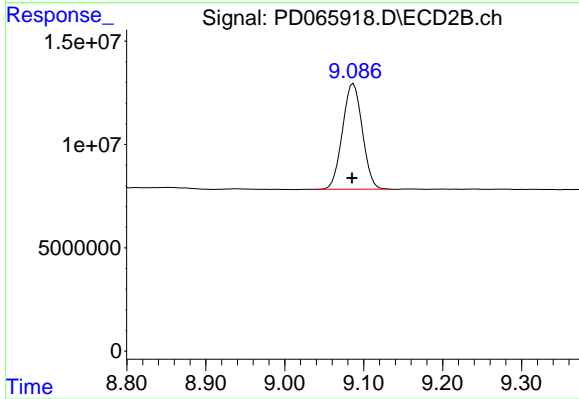
Manual Integrations  
 APPROVED  
 mohammad  
 9/28/2021 11:27:13 AM



#21 Endrin ketone  
 R.T.: 7.762 min  
 Delta R.T.: 0.000 min  
 Response: 22510200  
 Conc: 3.95 ng/ml m



#28 Decachlorobiphenyl  
 R.T.: 8.235 min  
 Delta R.T.: 0.000 min  
 Response: 28746971  
 Conc: 21.05 ng/ml



#28 Decachlorobiphenyl  
 R.T.: 9.087 min  
 Delta R.T.: 0.002 min  
 Response: 89428293  
 Conc: 23.11 ng/ml