

Data Path : Z:\pestpcbsrv\HPCHEM1\ECD_D\Data\PD092721\
 Data File : PD065932.D
 Signal(s) : Signal #1: ECD1A.ch Signal #2: ECD2B.ch
 Acq On : 28 Sep 2021 01:38
 Operator : AR\AJ
 Sample : M3946-01MS 10X
 Misc :
 ALS Vial : 35 Sample Multiplier: 1

Instrument :
 ECD_D
ClientSampleId :
 PL-05-092421MS

Manual Integrations
APPROVED
 mohammad
 9/28/2021 11:28:15 AM

Integration File signal 1: autoint1.e
 Integration File signal 2: autoint2.e
 Quant Time: Sep 28 02:24:44 2021
 Quant Method : Z:\pestpcbsrv\HPCHEM1\ECD_D\Method\PD092221.M
 Quant Title : GC Extractables
 QLast Update : Thu Sep 23 12:18:33 2021
 Response via : Initial Calibration
 Integrator: ChemStation

Volume Inj. : 2 µl
 Signal #1 Phase : ZB-MR2 Signal #2 Phase: ZB-MR1
 Signal #1 Info : 30M x 0.32mm x0.2 Signal #2 Info : 30M x 0.32mm x 0.50µm

Compound	RT#1	RT#2	Resp#1	Resp#2	ng/ml	ng/ml

System Monitoring Compounds						
1) SA Tetrachlo...	3.493	4.013	2607738	21248846	3.521	3.701
28) SA Decachlor...	8.235	9.085	4105390	18458678	3.006	4.769m#
Target Compounds						
2) A alpha-BHC	3.933	4.407	7631701	62387448	6.795	7.420
3) MA gamma-BHC...	4.216	4.694	8482625	62942056	7.564	8.147
4) MA Heptachlor	4.513	5.198	9062959	56553631	7.598	7.794
5) MB Aldrin	4.759	5.502	4298733	50359439	3.843m	7.486m#
6) B beta-BHC	4.467	4.867	8566531	18604445	15.006	5.034m#
7) B delta-BHC	4.669	5.086	5888427	41883688	5.209	5.820m
8) B Heptachlo...	5.203	5.894	8512695	37043090	7.602	7.168
9) A Endosulfan I	5.542	6.251	6841315	41029442	6.291	7.423
10) B gamma-Chl...	5.428	6.125	9082287	47467387	7.521	7.914m
11) B alpha-Chl...	5.487	6.199	8651879	46230913	7.309	7.703
12) B 4,4'-DDE	5.649	6.357	7450442	49559736	6.845	8.593 #
13) MA Dieldrin	5.783	6.509	9978667	39917432	8.610m	6.773
14) MA Endrin	6.042	6.728	7739529	35374432	7.314	7.175
15) B Endosulfa...	6.315	6.942	8549130	35404298	7.914	7.309
16) A 4,4'-DDD	6.165	6.852	6311320	40650264	6.434	8.271 #
17) MA 4,4'-DDT	6.404	7.149	6870755	38688768	6.242	7.659
18) B Endrin al...	6.483	7.066	6357287	30497117	7.173	7.790
19) B Endosulfa...	6.695	7.288	12351930	36675606	10.822	7.436 #
20) A Methoxychlor	6.951	7.608	4052220	22027810	5.930	8.370 #
21) B Endrin ke...	7.189	7.763	8041095	47069782	5.708	8.254 #
22) Mirex	7.374	8.211	11469288	35539652	9.499	9.001

(f)=RT Delta > 1/2 Window (#)=Amounts differ by > 25% (m)=manual int.

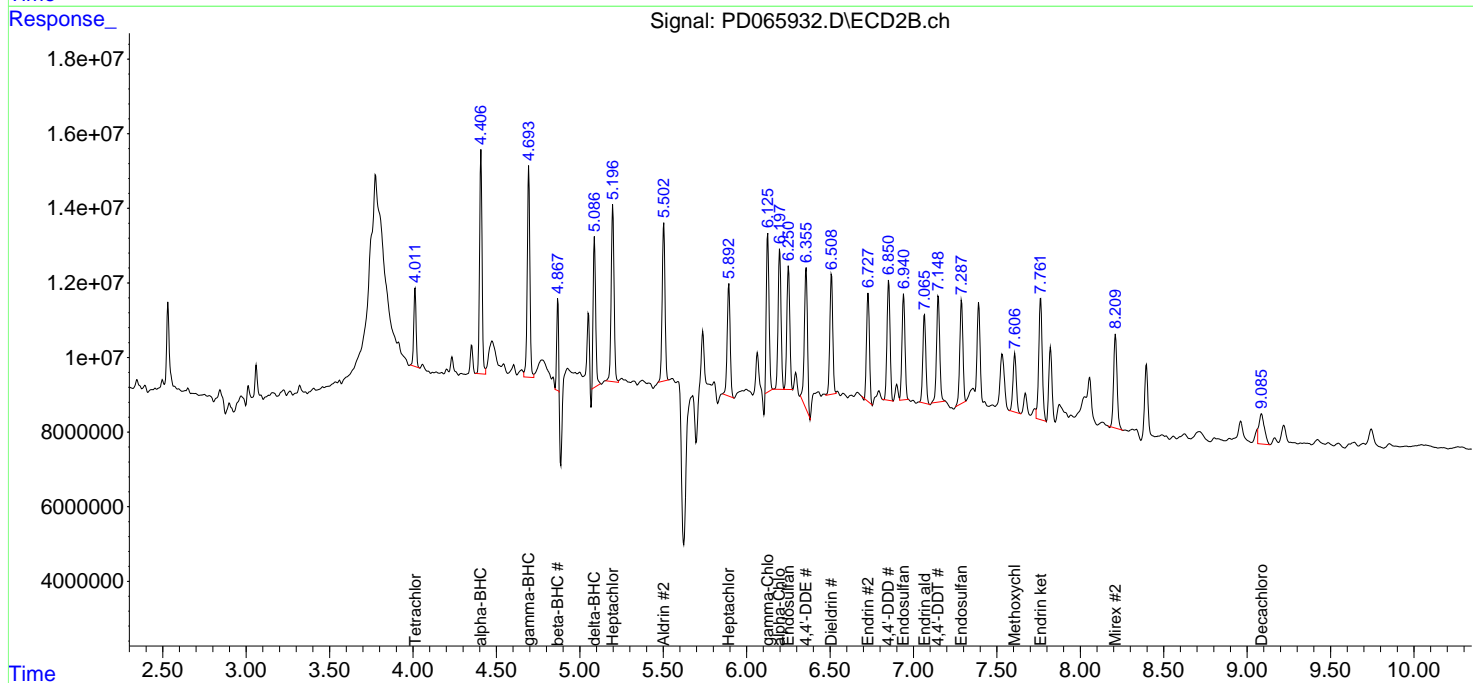
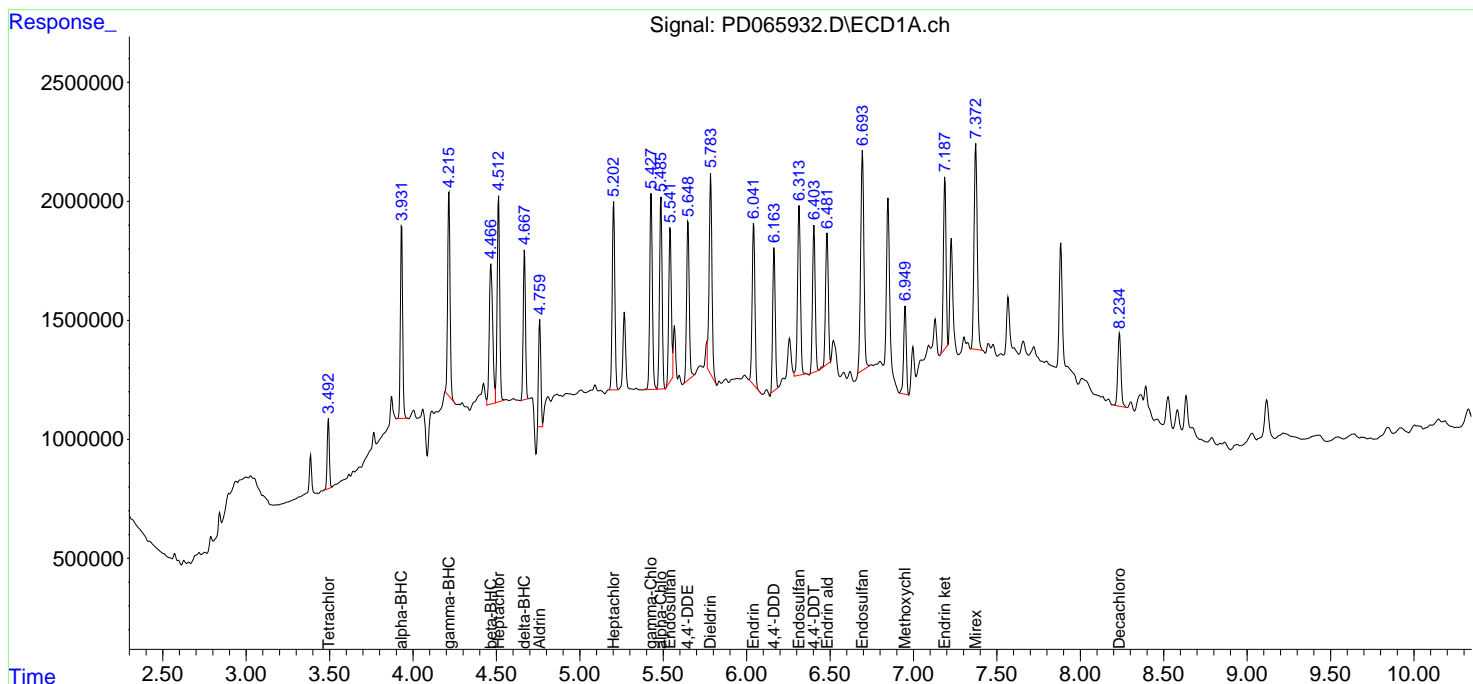
Data Path : Z:\pestpcbsrv\HPCHEM1\ECD_D\Data\PD092721\
 Data File : PD065932.D
 Signal(s) : Signal #1: ECD1A.ch Signal #2: ECD2B.ch
 Acq On : 28 Sep 2021 01:38
 Operator : AR\AJ
 Sample : M3946-01MS 10X
 Misc :
 ALS Vial : 35 Sample Multiplier: 1

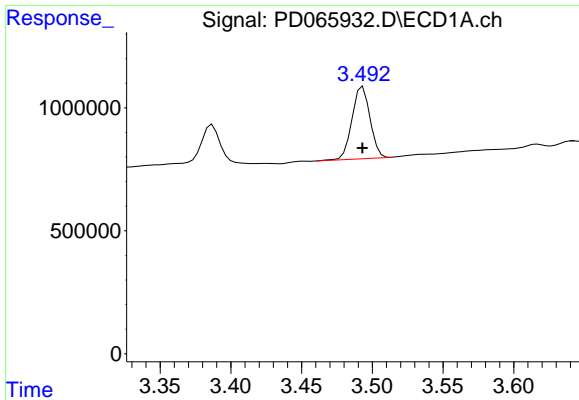
Instrument :
 ECD_D
Client Sampled :
 PL-05-092421MS

Manual Integrations
APPROVED
 mohammad
 9/28/2021 11:28:15 AM

Integration File signal 1: autoint1.e
 Integration File signal 2: autoint2.e
 Quant Time: Sep 28 02:24:44 2021
 Quant Method : Z:\pestpcbsrv\HPCHEM1\ECD_D\Method\PD092221.M
 Quant Title : GC Extractables
 QLast Update : Thu Sep 23 12:18:33 2021
 Response via : Initial Calibration
 Integrator: ChemStation

Volume Inj. : 2 µl
 Signal #1 Phase : ZB-MR2 Signal #2 Phase: ZB-MR1
 Signal #1 Info : 30M x 0.32mm x0.2 Signal #2 Info : 30M x 0.32mm x 0.50µm



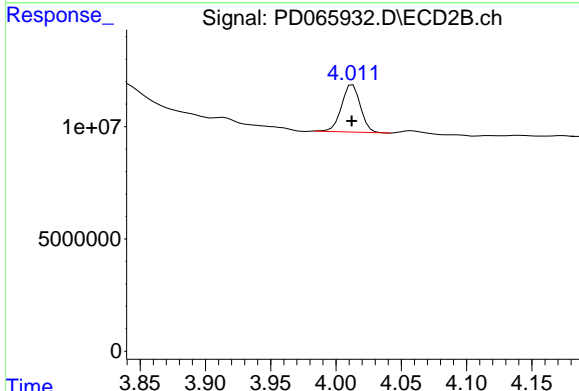


#1 Tetrachloro-m-xylene

R.T.: 3.493 min
 Delta R.T.: 0.000 min
 Response: 2607738
 Conc: 3.52 ng/ml

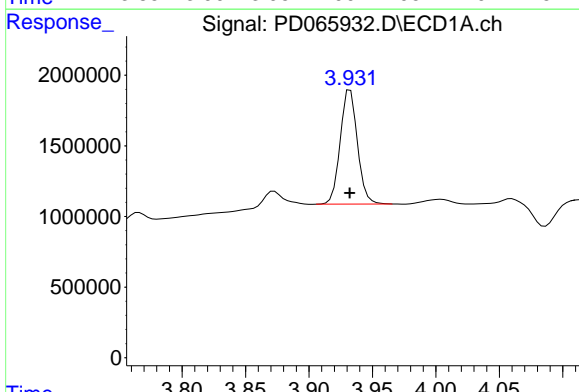
Instrument :
 ECD_D
ClientSampled :
 PL-05-092421MS

Manual Integrations
APPROVED
 mohammad
 9/28/2021 11:28:15 AM



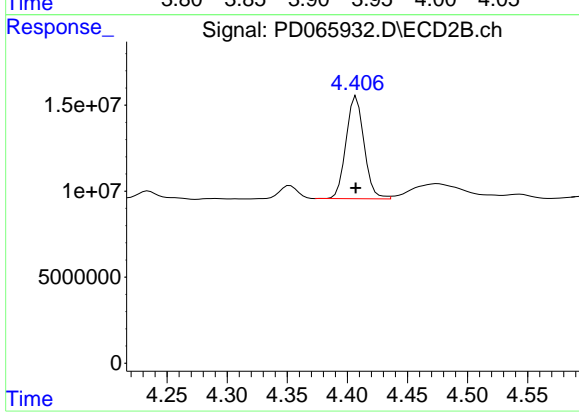
#1 Tetrachloro-m-xylene

R.T.: 4.013 min
 Delta R.T.: 0.000 min
 Response: 21248846
 Conc: 3.70 ng/ml



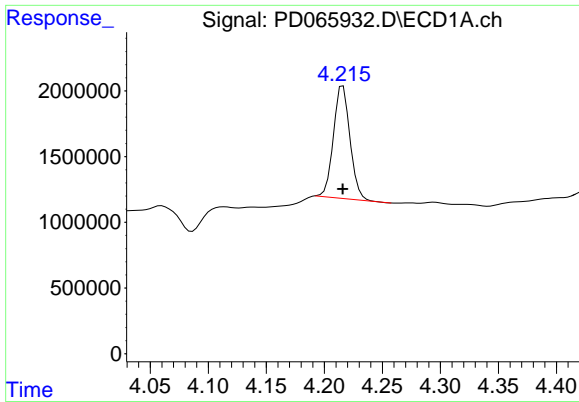
#2 alpha-BHC

R.T.: 3.933 min
 Delta R.T.: 0.000 min
 Response: 7631701
 Conc: 6.80 ng/ml



#2 alpha-BHC

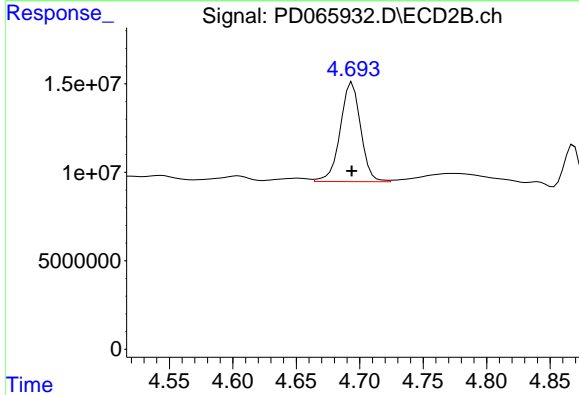
R.T.: 4.407 min
 Delta R.T.: 0.000 min
 Response: 62387448
 Conc: 7.42 ng/ml



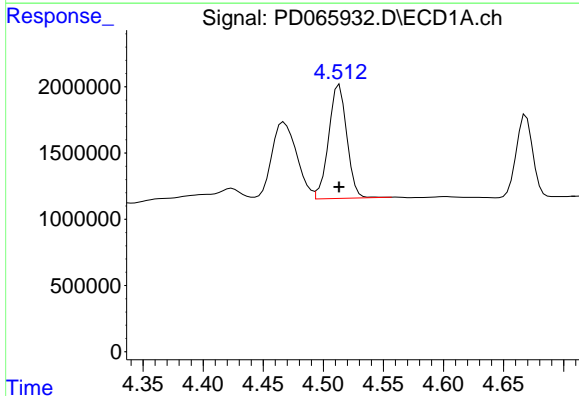
#3 gamma-BHC (Lindane)
 R.T.: 4.216 min
 Delta R.T.: 0.000 min
 Response: 8482625
 Conc: 7.56 ng/ml

Instrument :
 ECD_D
 ClientSampleId :
 PL-05-092421MS

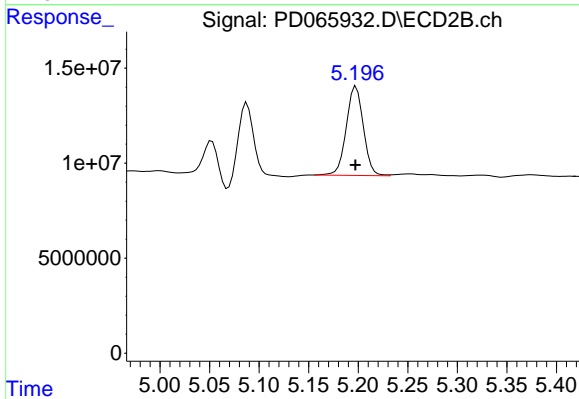
Manual Integrations
 APPROVED
 mohammad
 9/28/2021 11:28:15 AM



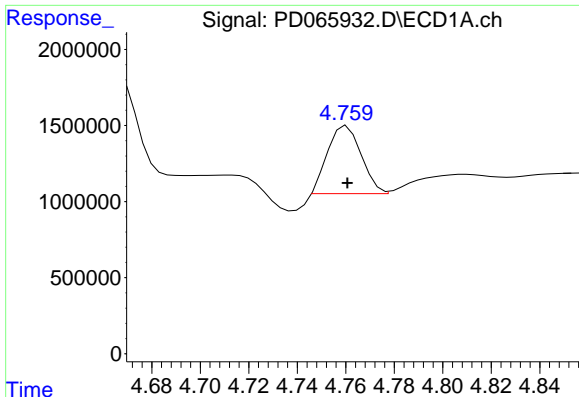
#3 gamma-BHC (Lindane)
 R.T.: 4.694 min
 Delta R.T.: 0.000 min
 Response: 62942056
 Conc: 8.15 ng/ml



#4 Heptachlor
 R.T.: 4.513 min
 Delta R.T.: 0.000 min
 Response: 9062959
 Conc: 7.60 ng/ml



#4 Heptachlor
 R.T.: 5.198 min
 Delta R.T.: 0.000 min
 Response: 56553631
 Conc: 7.79 ng/ml



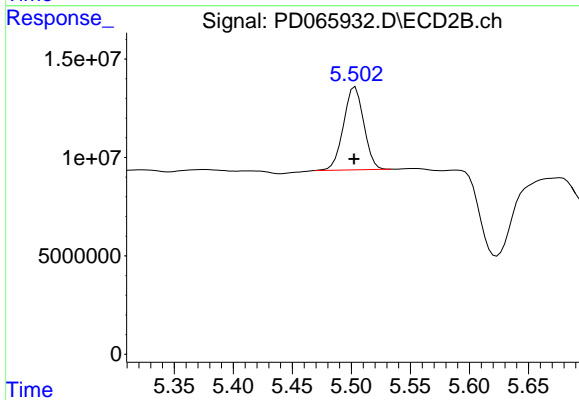
#5 Aldrin

R.T.: 4.759 min
 Delta R.T.: -0.002 min
 Response: 4298733
 Conc: 3.84 ng/ml m

Instrument :
 ECD_D
 ClientSampleId :
 PL-05-092421MS

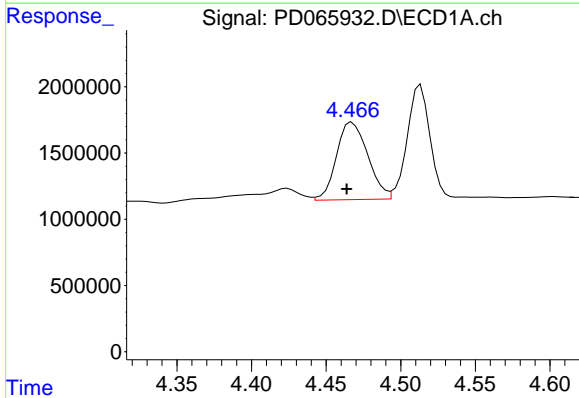
Manual Integrations
 APPROVED

mohammad
 9/28/2021 11:28:15 AM



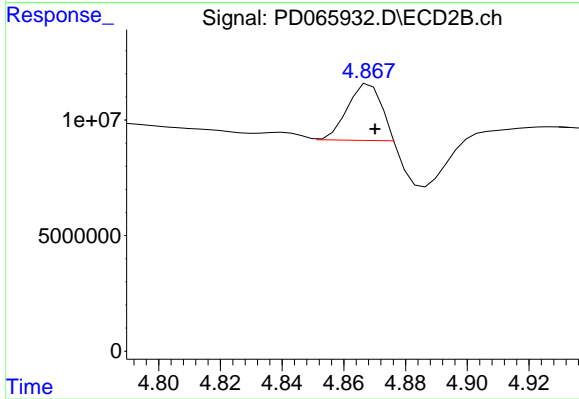
#5 Aldrin

R.T.: 5.502 min
 Delta R.T.: 0.000 min
 Response: 50359439
 Conc: 7.49 ng/ml m



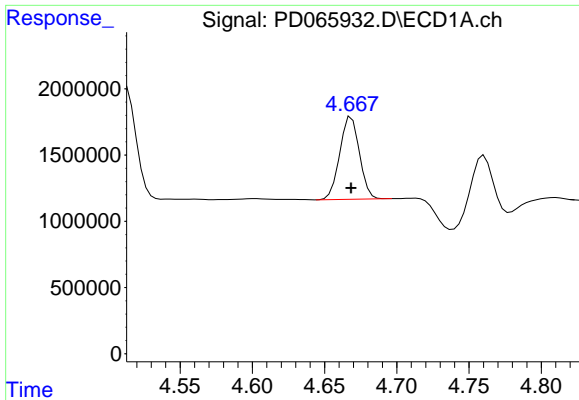
#6 beta-BHC

R.T.: 4.467 min
 Delta R.T.: 0.004 min
 Response: 8566531
 Conc: 15.01 ng/ml



#6 beta-BHC

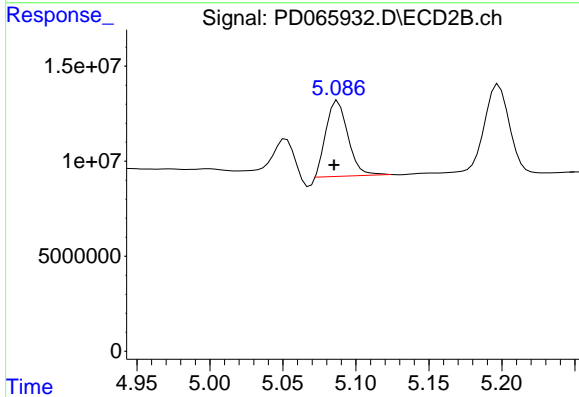
R.T.: 4.867 min
 Delta R.T.: -0.003 min
 Response: 18604445
 Conc: 5.03 ng/ml m



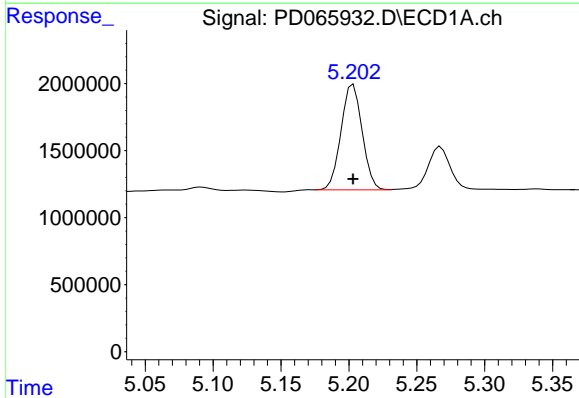
#7 delta-BHC
 R.T.: 4.669 min
 Delta R.T.: 0.000 min
 Response: 5888427
 Conc: 5.21 ng/ml

Instrument :
 ECD_D
ClientSampled :
 PL-05-092421MS

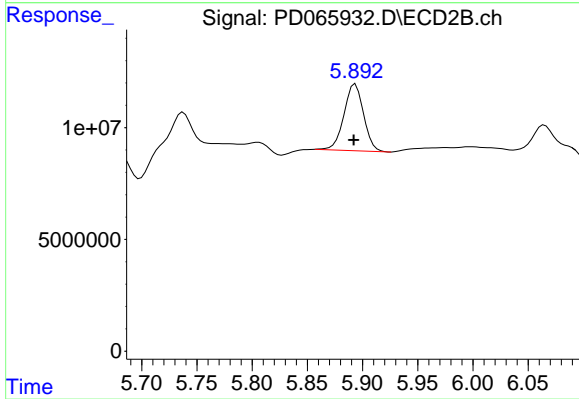
Manual Integrations
APPROVED
 mohammad
 9/28/2021 11:28:15 AM



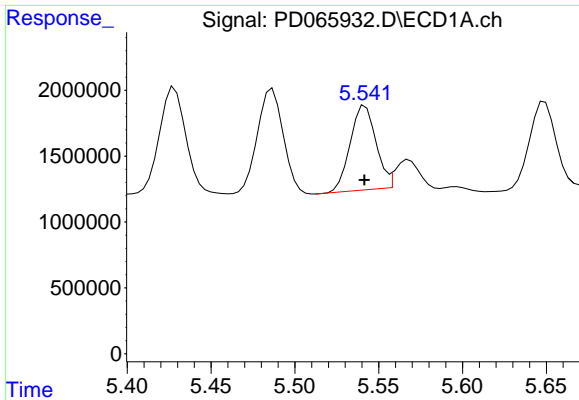
#7 delta-BHC
 R.T.: 5.086 min
 Delta R.T.: 0.001 min
 Response: 41883688
 Conc: 5.82 ng/ml m



#8 Heptachlor epoxide
 R.T.: 5.203 min
 Delta R.T.: 0.000 min
 Response: 8512695
 Conc: 7.60 ng/ml



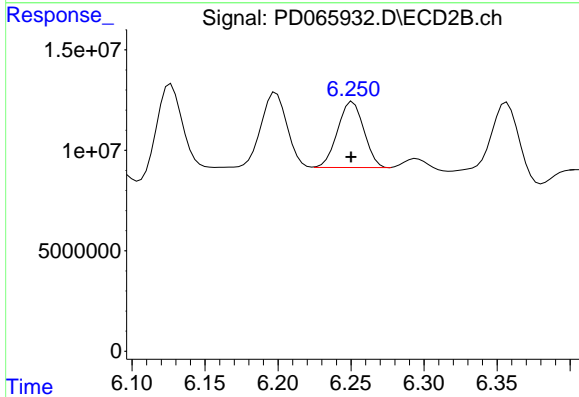
#8 Heptachlor epoxide
 R.T.: 5.894 min
 Delta R.T.: 0.001 min
 Response: 37043090
 Conc: 7.17 ng/ml



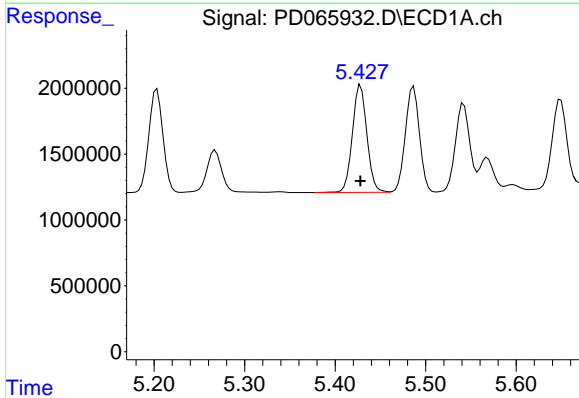
#9 Endosulfan I
 R.T.: 5.542 min
 Delta R.T.: 0.000 min
 Response: 6841315
 Conc: 6.29 ng/ml

Instrument :
 ECD_D
ClientSampleId :
 PL-05-092421MS

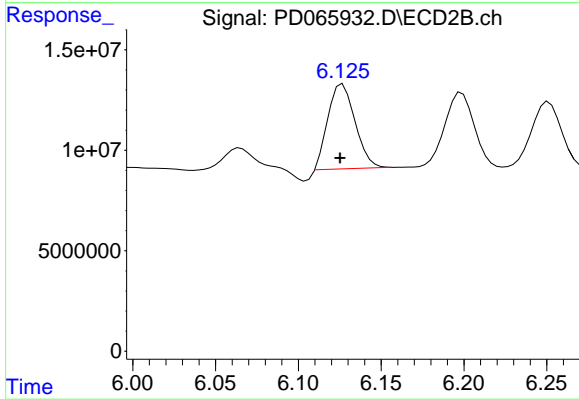
Manual Integrations
APPROVED
 mohammad
 9/28/2021 11:28:15 AM



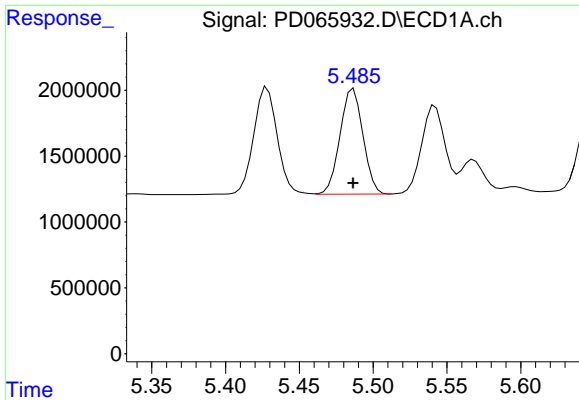
#9 Endosulfan I
 R.T.: 6.251 min
 Delta R.T.: 0.001 min
 Response: 41029442
 Conc: 7.42 ng/ml



#10 gamma-Chlordane
 R.T.: 5.428 min
 Delta R.T.: 0.000 min
 Response: 9082287
 Conc: 7.52 ng/ml



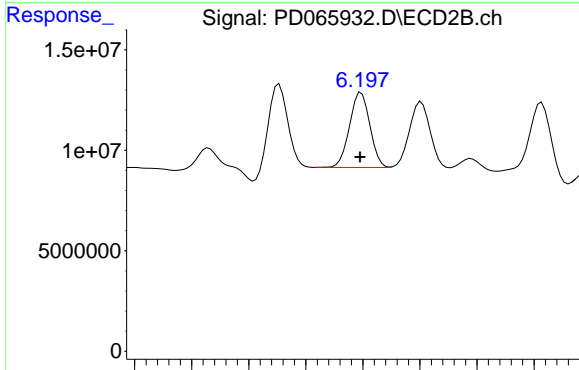
#10 gamma-Chlordane
 R.T.: 6.125 min
 Delta R.T.: 0.000 min
 Response: 47467387
 Conc: 7.91 ng/ml m



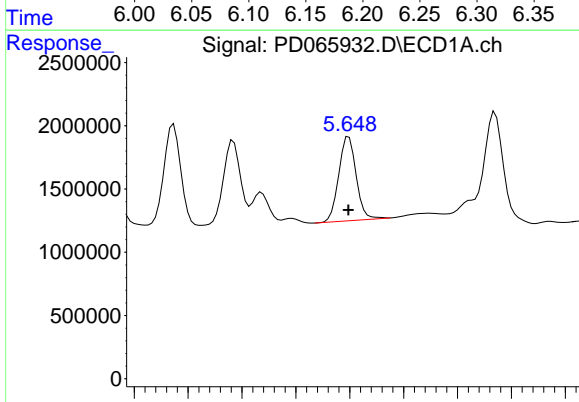
#11 alpha-Chlordane
 R.T.: 5.487 min
 Delta R.T.: 0.000 min
 Response: 8651879
 Conc: 7.31 ng/ml

Instrument :
 ECD_D
ClientSampleId :
 PL-05-092421MS

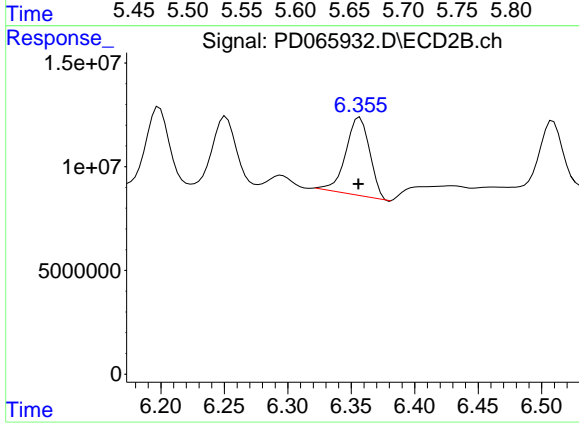
Manual Integrations
APPROVED
 mohammad
 9/28/2021 11:28:15 AM



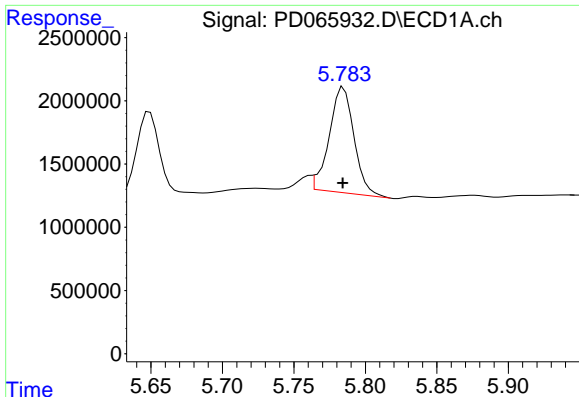
#11 alpha-Chlordane
 R.T.: 6.199 min
 Delta R.T.: 0.001 min
 Response: 46230913
 Conc: 7.70 ng/ml



#12 4,4'-DDE
 R.T.: 5.649 min
 Delta R.T.: 0.000 min
 Response: 7450442
 Conc: 6.84 ng/ml



#12 4,4'-DDE
 R.T.: 6.357 min
 Delta R.T.: 0.001 min
 Response: 49559736
 Conc: 8.59 ng/ml



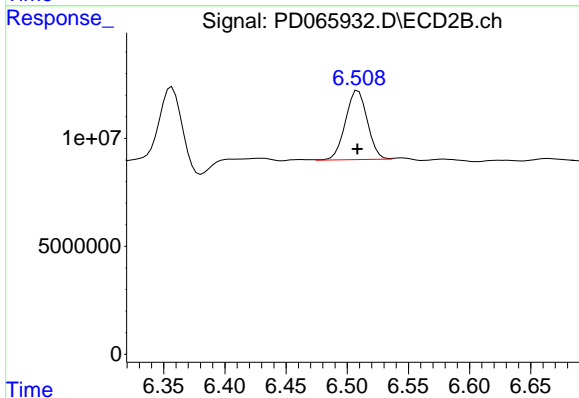
#13 Dieldrin

R.T.: 5.783 min
 Delta R.T.: 0.000 min
 Response: 9978667
 Conc: 8.61 ng/ml m

Instrument :
 ECD_D
 ClientSampleId :
 PL-05-092421MS

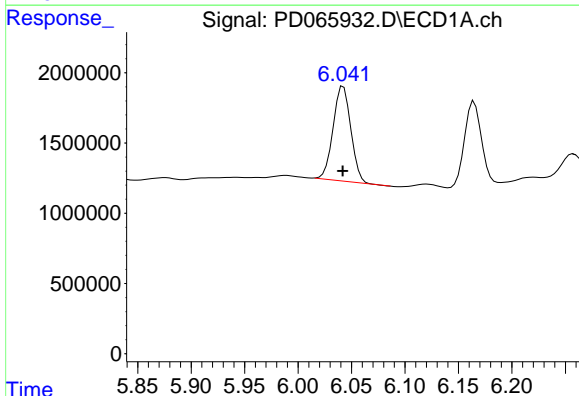
Manual Integrations
 APPROVED

mohammad
 9/28/2021 11:28:15 AM



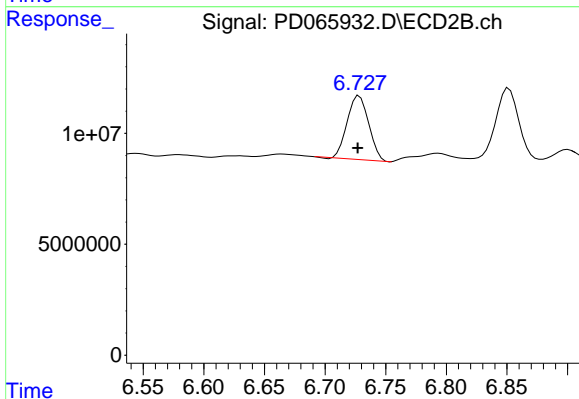
#13 Dieldrin

R.T.: 6.509 min
 Delta R.T.: 0.000 min
 Response: 39917432
 Conc: 6.77 ng/ml



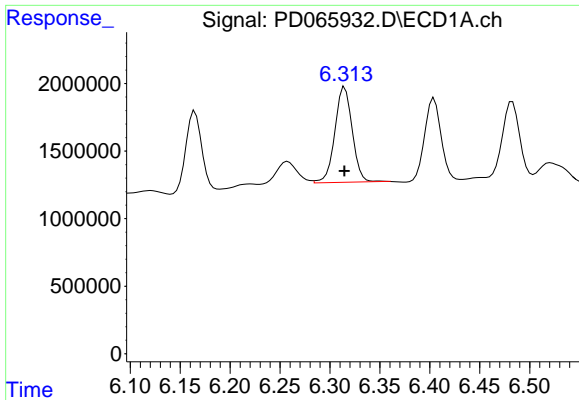
#14 Endrin

R.T.: 6.042 min
 Delta R.T.: 0.000 min
 Response: 7739529
 Conc: 7.31 ng/ml



#14 Endrin

R.T.: 6.728 min
 Delta R.T.: 0.001 min
 Response: 35374432
 Conc: 7.18 ng/ml

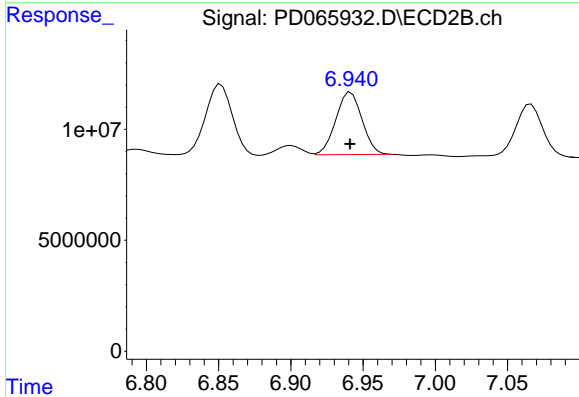


#15 Endosulfan II

R.T.: 6.315 min
 Delta R.T.: 0.000 min
 Response: 8549130
 Conc: 7.91 ng/ml

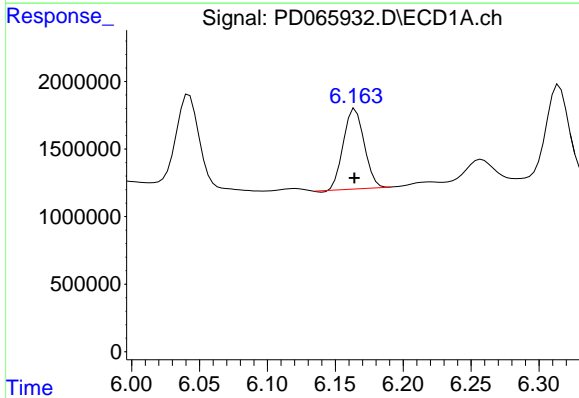
Instrument :
 ECD_D
 ClientSampleId :
 PL-05-092421MS

Manual Integrations
 APPROVED
 mohammad
 9/28/2021 11:28:15 AM



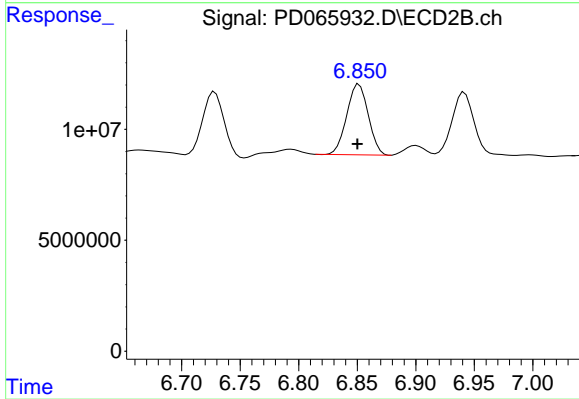
#15 Endosulfan II

R.T.: 6.942 min
 Delta R.T.: 0.000 min
 Response: 35404298
 Conc: 7.31 ng/ml



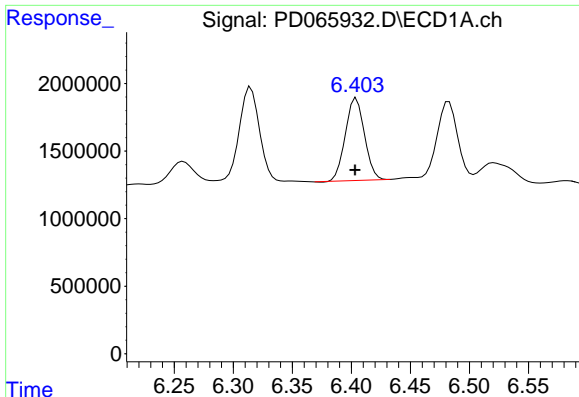
#16 4,4'-DDD

R.T.: 6.165 min
 Delta R.T.: 0.000 min
 Response: 6311320
 Conc: 6.43 ng/ml



#16 4,4'-DDD

R.T.: 6.852 min
 Delta R.T.: 0.001 min
 Response: 40650264
 Conc: 8.27 ng/ml



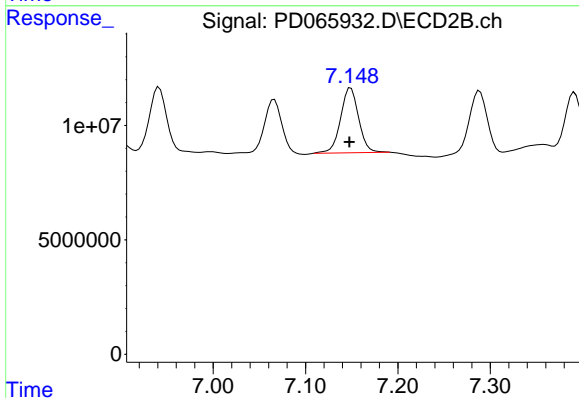
#17 4,4'-DDT

R.T.: 6.404 min
 Delta R.T.: 0.001 min
 Response: 6870755
 Conc: 6.24 ng/ml

Instrument :
 ECD_D
 ClientSampleId :
 PL-05-092421MS

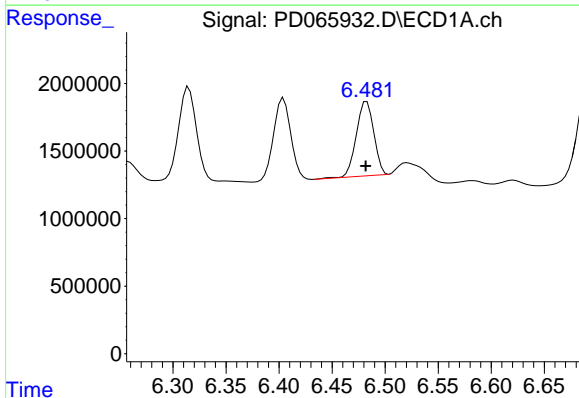
Manual Integrations
 APPROVED

mohammad
 9/28/2021 11:28:15 AM



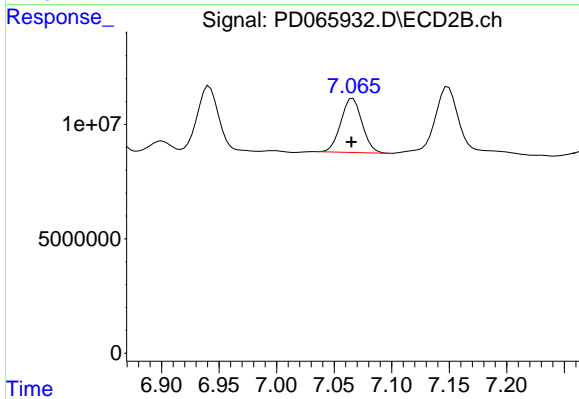
#17 4,4'-DDT

R.T.: 7.149 min
 Delta R.T.: 0.002 min
 Response: 38688768
 Conc: 7.66 ng/ml



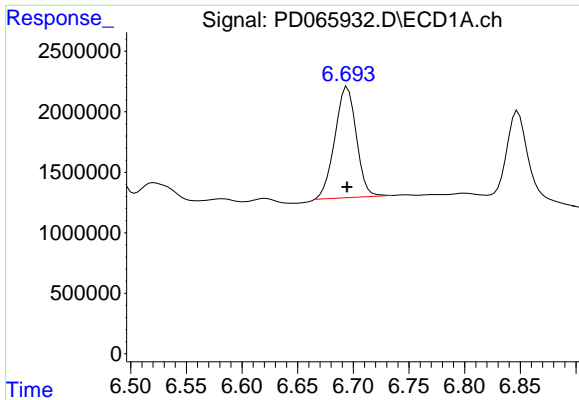
#18 Endrin aldehyde

R.T.: 6.483 min
 Delta R.T.: 0.001 min
 Response: 6357287
 Conc: 7.17 ng/ml



#18 Endrin aldehyde

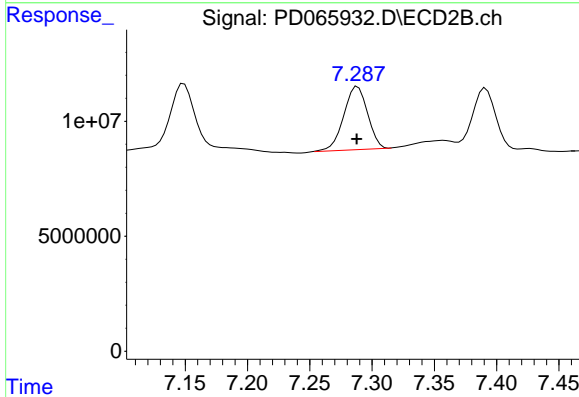
R.T.: 7.066 min
 Delta R.T.: 0.001 min
 Response: 30497117
 Conc: 7.79 ng/ml



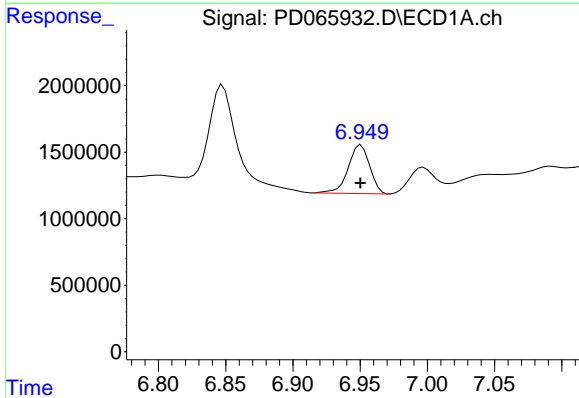
#19 Endosulfan Sulfate
 R.T.: 6.695 min
 Delta R.T.: 0.000 min
 Response: 12351930
 Conc: 10.82 ng/ml

Instrument :
 ECD_D
 ClientSampleId :
 PL-05-092421MS

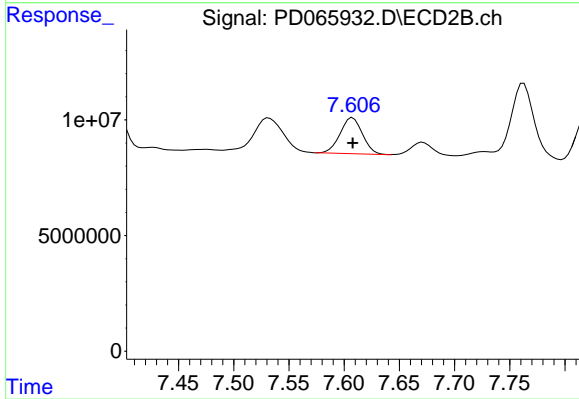
Manual Integrations
 APPROVED
 mohammad
 9/28/2021 11:28:15 AM



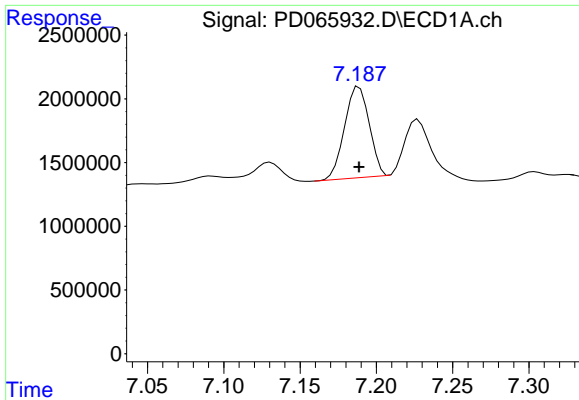
#19 Endosulfan Sulfate
 R.T.: 7.288 min
 Delta R.T.: 0.000 min
 Response: 36675606
 Conc: 7.44 ng/ml



#20 Methoxychlor
 R.T.: 6.951 min
 Delta R.T.: 0.000 min
 Response: 4052220
 Conc: 5.93 ng/ml



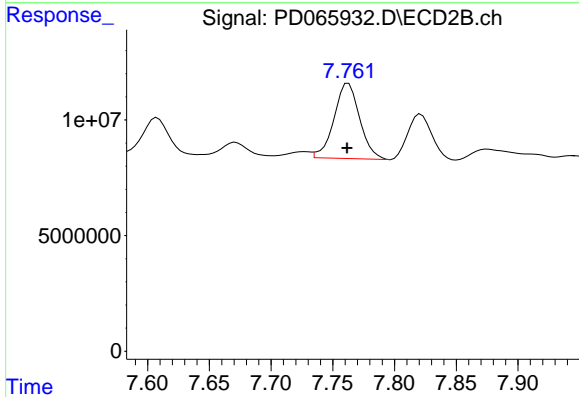
#20 Methoxychlor
 R.T.: 7.608 min
 Delta R.T.: 0.000 min
 Response: 22027810
 Conc: 8.37 ng/ml



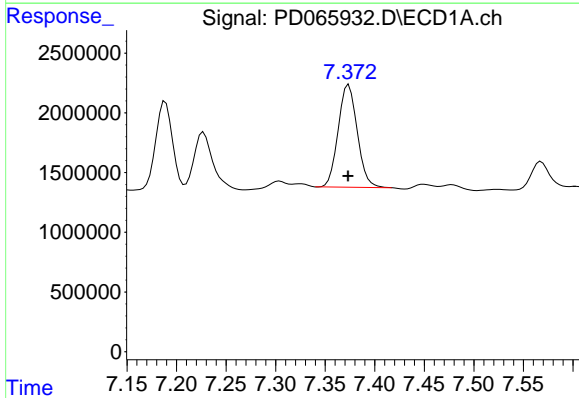
#21 Endrin ketone
 R.T.: 7.189 min
 Delta R.T.: 0.000 min
 Response: 8041095
 Conc: 5.71 ng/ml

Instrument :
 ECD_D
ClientSampled :
 PL-05-092421MS

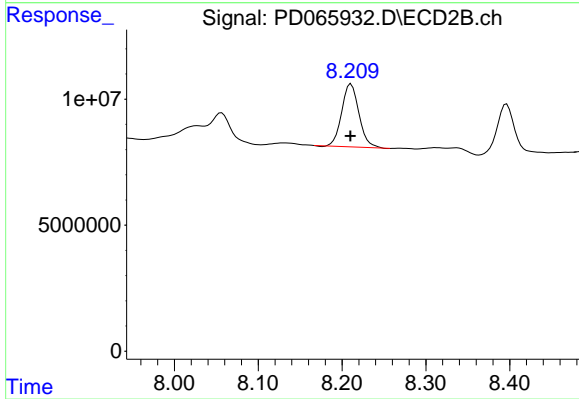
Manual Integrations
APPROVED
 mohammad
 9/28/2021 11:28:15 AM



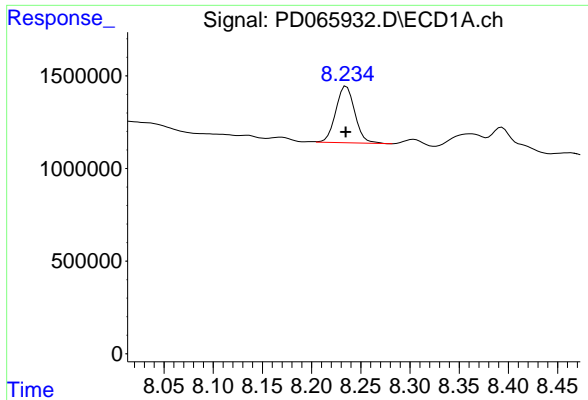
#21 Endrin ketone
 R.T.: 7.763 min
 Delta R.T.: 0.001 min
 Response: 47069782
 Conc: 8.25 ng/ml



#22 Mirex
 R.T.: 7.374 min
 Delta R.T.: 0.000 min
 Response: 11469288
 Conc: 9.50 ng/ml



#22 Mirex
 R.T.: 8.211 min
 Delta R.T.: 0.000 min
 Response: 35539652
 Conc: 9.00 ng/ml



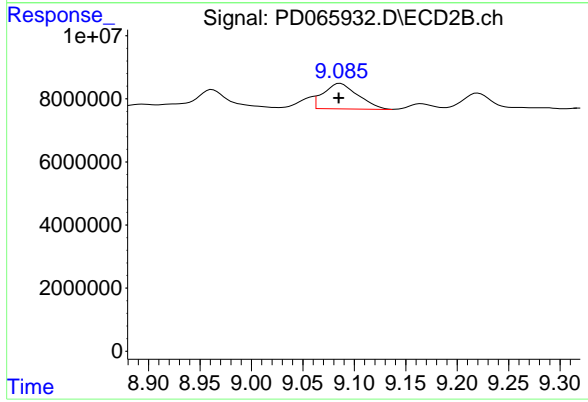
#28 Decachlorobiphenyl

R.T.: 8.235 min
Delta R.T.: 0.000 min
Response: 4105390
Conc: 3.01 ng/ml

Instrument :
ECD_D
ClientSampleId :
PL-05-092421MS

Manual Integrations
APPROVED

mohammad
9/28/2021 11:28:15 AM



#28 Decachlorobiphenyl

R.T.: 9.085 min
Delta R.T.: 0.000 min
Response: 18458678
Conc: 4.77 ng/ml m