

Data Path : Z:\pestpcbsrv\HPCHEM1\ECD_D\Data\PD092818\
 Data File : PD049500.D
 Signal(s) : Signal #1: ECD1A.CH Signal #2: ECD2B.CH
 Acq On : 29 Sep 2018 5:23
 Operator : AJ\SJ
 Sample : PIBLK42
 Misc :
 ALS Vial : 19 Sample Multiplier: 1

Instrument :
 ECD_D
 ClientSampleId :

Integration File signal 1: autoint1.e
 Integration File signal 2: autoint2.e
 Quant Time: Oct 01 07:10:46 2018
 Quant Method : Z:\pestpcbsrv\HPCHEM1\ECD_D\Method\PD092818CLP.M
 Quant Title : GC Extractables
 QLast Update : Sat Sep 29 02:14:07 2018
 Response via : Initial Calibration
 Integrator: ChemStation 6890 Scale Mode: Large solvent peaks clipped

Volume Inj. : 1 µl
 Signal #1 Phase : ZB-MR1 Signal #2 Phase: ZB-MR1
 Signal #1 Info : 30M x 0.32mm x0.2 Signal #2 Info : 30M x 0.32mm x 0.50µm

Compound	RT#1	RT#2	Resp#1	Resp#2	ng/ml	ng/ml

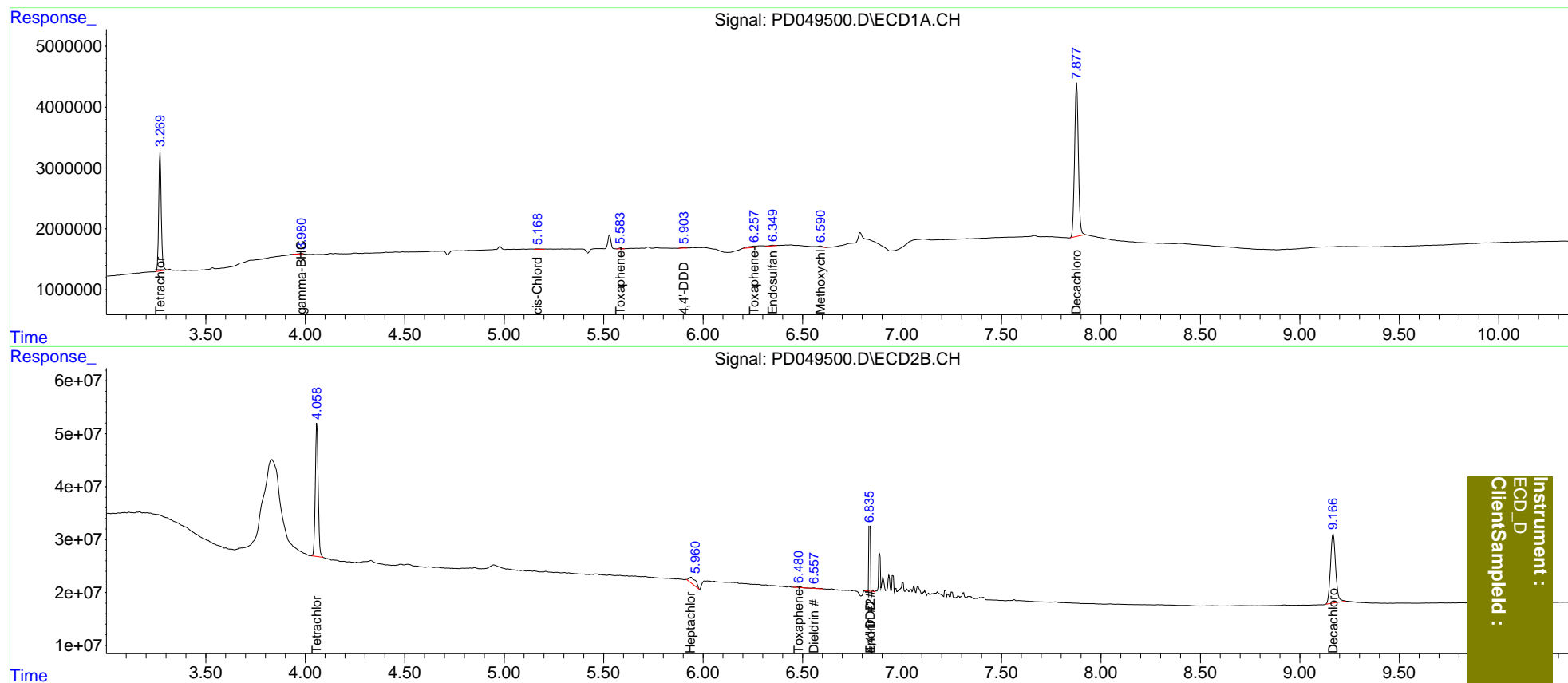
System Monitoring Compounds						
1) SA Tetrachlo...	3.271	4.059	17585555	254.3E6	20.207	21.372
2) SA Decachlor...	7.878	9.168	33259516	234.3E6	42.567	44.389
Target Compounds						
3) MA gamma-BHC...	3.981	0.000	123254	0	0.103	N.D. #
4) MA Heptachlor	4.257	5.257	78681	881153	<MDL	<MDL #
5) MB Aldrin	4.490	5.583	50927	32800	<MDL	<MDL #
6) B beta-BHC	4.183f	0.000	19107	0	<MDL	N.D. #
7) B delta-BHC	4.407	5.121	84789	-63437	<MDL	N.D. #
8) B Heptachlo...	0.000	5.939	0	25733811	N.D.	2.076
9) A Endosulfan I	5.227	0.000	26120	0	<MDL	N.D. #
10) B trans-Chl...	5.098	0.000	95976	0	<MDL	N.D. #
11) B cis-Chlor...	5.169	0.000	147701	0	0.130	N.D. #
12) B 4,4'-DDE	5.293f	0.000	30443	0	<MDL	N.D. #
13) MA Dieldrin	0.000	6.556	0	1267193	N.D.	0.111
14) MA Endrin	5.642f	6.838f	27934	73619353	<MDL	9.999 #
16) A 4,4'-DDD	5.904f	6.838f	113841	73619353	0.147	10.709 #
19) B Endosulfa...	6.350	0.000	227631	0	0.242	N.D. #
20) A Methoxychlor	6.590f	0.000	243902	0	0.591	N.D. #
22) Toxaphene-1	0.000	6.482	0	2152009	N.D.	41.954
23) Toxaphene-2	5.584	0.000	139923	0	19.787	N.D. #
25) Toxaphene-4	6.260	0.000	632249	0	34.355	N.D. #

(f)=RT Delta > 1/2 Window (#)=Amounts differ by > 25% (m)=manual int.

Data Path : Z:\pestpcbsrv\HPCHEM1\ECD_D\Data\PD092818\
 Data File : PD049500.D
 Signal(s) : Signal #1: ECD1A.CH Signal #2: ECD2B.CH
 Acq On : 29 Sep 2018 5:23
 Operator : AJ\SJ
 Sample : PIBLK42
 Misc :
 ALS Vial : 19 Sample Multiplier: 1

Integration File signal 1: autoint1.e
 Integration File signal 2: autoint2.e
 Quant Time: Oct 01 07:10:46 2018
 Quant Method : Z:\pestpcbsrv\HPCHEM1\ECD_D\Method\PD092818CLP.M
 Quant Title : GC Extractables
 QLast Update : Sat Sep 29 02:14:07 2018
 Response via : Initial Calibration
 Integrator: ChemStation 6890 Scale Mode: Large solvent peaks clipped

Volume Inj. : 1 µl
 Signal #1 Phase : ZB-MR2 Signal #2 Phase: ZB-MR1
 Signal #1 Info : 30M x 0.32mm x0.2 Signal #2 Info : 30M x 0.32mm x 0.50µm



Instrument :
 ECD_D
 ClientSampleId :