

Data Path : Z:\pestpcbsrv\HPCHEM1\ECD_D\Data\PD092818\
 Data File : PD049514.D
 Signal(s) : Signal #1: ECD1A.CH Signal #2: ECD2B.CH
 Acq On : 29 Sep 2018 9:39
 Operator : AJ\SJ
 Sample : PB113140BL
 Misc :
 ALS Vial : 32 Sample Multiplier: 1

Instrument :
 ECD_D
ClientSampled :
 PBLK40

Manual Integrations
APPROVED
 Sohil
 10/2/2018 8:45:30 AM

Integration File signal 1: autoint1.e
 Integration File signal 2: autoint2.e
 Quant Time: Oct 01 07:11:56 2018
 Quant Method : Z:\pestpcbsrv\HPCHEM1\ECD_D\Method\PD092818CLP.M
 Quant Title : GC Extractables
 QLast Update : Sat Sep 29 02:14:07 2018
 Response via : Initial Calibration
 Integrator: ChemStation 6890 Scale Mode: Large solvent peaks clipped

Volume Inj. : 1 µl
 Signal #1 Phase : ZB-MR2 Signal #2 Phase: ZB-MR1
 Signal #1 Info : 30M x 0.32mm x0.2 Signal #2 Info : 30M x 0.32mm x 0.50µm

Compound	RT#1	RT#2	Resp#1	Resp#2	ng/ml	ng/ml

System Monitoring Compounds						
1) SA Tetrachlo...	3.270	4.059	16353196	228.2E6	18.791	19.176
27) SA Decachlor...	7.874	9.169	32013776	224.8E6	40.973m	42.588

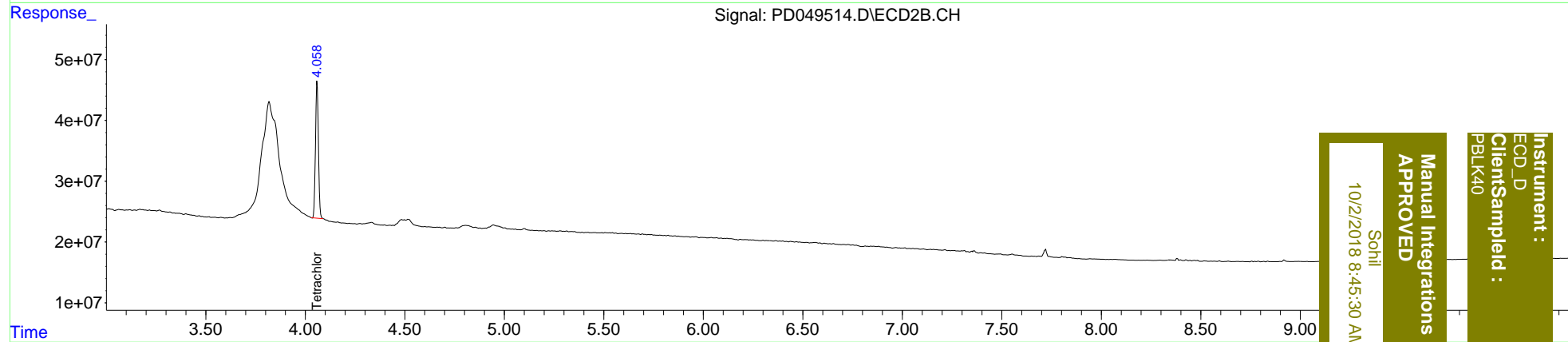
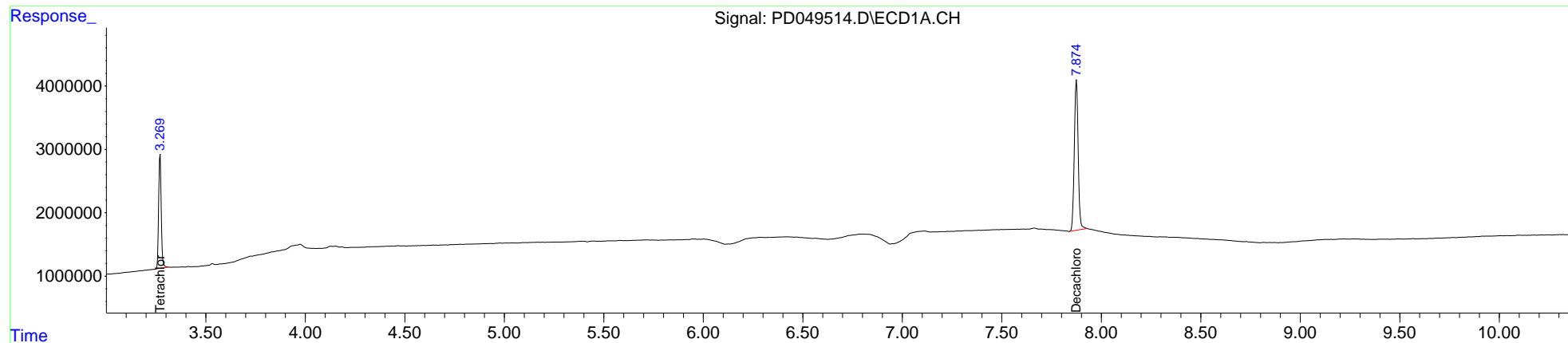
Target Compounds

 (f)=RT Delta > 1/2 Window (#)=Amounts differ by > 25% (m)=manual int.

Data Path : Z:\pestpcbsrv\HPCHEM1\ECD_D\Data\PD092818\
 Data File : PD049514.D
 Signal(s) : Signal #1: ECD1A.CH Signal #2: ECD2B.CH
 Acq On : 29 Sep 2018 9:39
 Operator : AJ\SJ
 Sample : PB113140BL
 Misc :
 ALS Vial : 32 Sample Multiplier: 1

Integration File signal 1: autoint1.e
 Integration File signal 2: autoint2.e
 Quant Time: Oct 01 07:11:56 2018
 Quant Method : Z:\pestpcbsrv\HPCHEM1\ECD_D\Method\PD092818CLP.M
 Quant Title : GC Extractables
 QLast Update : Sat Sep 29 02:14:07 2018
 Response via : Initial Calibration
 Integrator: ChemStation 6890 Scale Mode: Large solvent peaks clipped

Volume Inj. : 1 µl
 Signal #1 Phase : ZB-MR2 Signal #2 Phase: ZB-MR1
 Signal #1 Info : 30M x 0.32mm x0.2 Signal #2 Info : 30M x 0.32mm x 0.50µm



Instrument :
 ECD_D
 ClientSampleId :
 PBLK40

Manual Integrations
 APPROVED
 10/2/2018 8:45:30 AM
 Sohli