

Data Path : Z:\pestpcbsrv\HPCHEM1\ECD_D\Data\PD092821\
 Data File : PD065938.D
 Signal(s) : Signal #1: ECD1A.ch Signal #2: ECD2B.ch
 Acq On : 28 Sep 2021 10:48
 Operator : AR\AJ
 Sample : PEM
 Misc :
 ALS Vial : 3 Sample Multiplier: 1

Instrument :
 ECD_D
 ClientSampled :
 PEM

Integration File signal 1: autoint1.e
 Integration File signal 2: autoint2.e
 Quant Time: Sep 28 16:18:36 2021
 Quant Method : Z:\pestpcbsrv\HPCHEM1\ECD_D\Method\PD092221.M
 Quant Title : GC Extractables
 QLast Update : Thu Sep 23 12:18:33 2021
 Response via : Initial Calibration
 Integrator: ChemStation

Volume Inj. : 2 µl
 Signal #1 Phase : ZB-MR2 Signal #2 Phase: ZB-MR1
 Signal #1 Info : 30M x 0.32mm x0.2 Signal #2 Info : 30M x 0.32mm x 0.50µm

	Compound	RT#1	RT#2	Resp#1	Resp#2	ng/ml	ng/ml

System Monitoring Compounds							
1)	SA Tetrachlo...	3.493	4.012	18498658	145.1E6	24.979	25.263
28)	SA Decachlor...	8.236	9.086	28921532	89740597	21.173	23.188
Target Compounds							
2)	A alpha-BHC	3.932	4.407	13150744	105.5E6	11.710	12.542
3)	MA gamma-BHC...	4.215	4.694	13376081	98569675	11.928	12.758
4)	MA Heptachlor	4.533f	5.209	78167	267889	0.066	0.037 #
5)	MB Aldrin	4.759	5.502	247492	88866	0.221	0.013 #
6)	B beta-BHC	4.465	4.870	9815503	50718553	17.194	13.723
8)	B Heptachlo...	5.228f	5.875f	139518	6482246	0.125	1.254 #
9)	A Endosulfan I	5.535	0.000	177004	0	0.163	N.D. #
10)	B gamma-Chl...	5.425	6.100f	458814	2064700	0.380	0.344
11)	B alpha-Chl...	0.000	6.214f	0	689749	N.D.	0.115 #
12)	B 4,4'-DDE	5.650	6.357	828949	1451159	0.762	0.252 #
13)	MA Dieldrin	0.000	6.498	0	301649	N.D.	0.051 #
14)	MA Endrin	6.043	6.728	59488904	257.1E6	56.220	52.151
15)	B Endosulfa...	6.311	6.941	547593	2054378	0.507	0.424
16)	A 4,4'-DDD	6.165	6.851	4692507	26275388	4.784	5.346
17)	MA 4,4'-DDT	6.405	7.149	122.7E6	494.7E6	111.468	97.941
18)	B Endrin al...	6.483	7.066	1733087	4762251	1.955	1.216 #
19)	B Endosulfa...	0.000	7.316f	0	25134	N.D.	0.005 #
20)	A Methoxychlor	6.951	7.609	170.2E6	603.5E6	249.056	229.308
21)	B Endrin ke...	7.188	7.763	7034118	23558723	4.994	4.131
22)	Mirex	7.381	0.000	412419	0	0.342	N.D. #
23)	Chlordane-1	4.391f	0.000	1166788	0	34.832	N.D. #
24)	Chlordane-2	4.884f	5.502f	100804	88866	2.482	0.384 #
25)	Chlordane-3	5.425	6.100f	458814	2064700	3.894	2.518 #
26)	Chlordane-4	0.000	6.214f	0	689749	N.D.	0.719 #
27)	Chlordane-5	6.311	0.000	547593	0	11.267	N.D. #

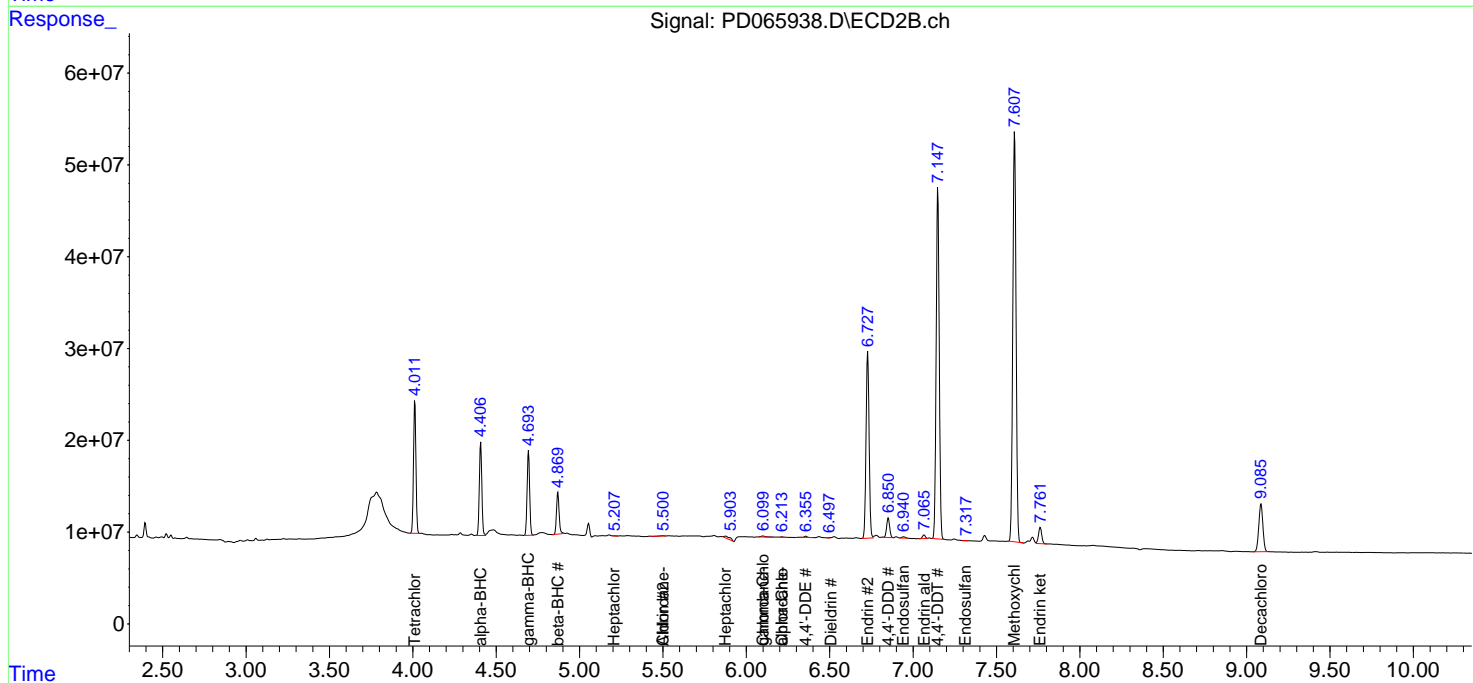
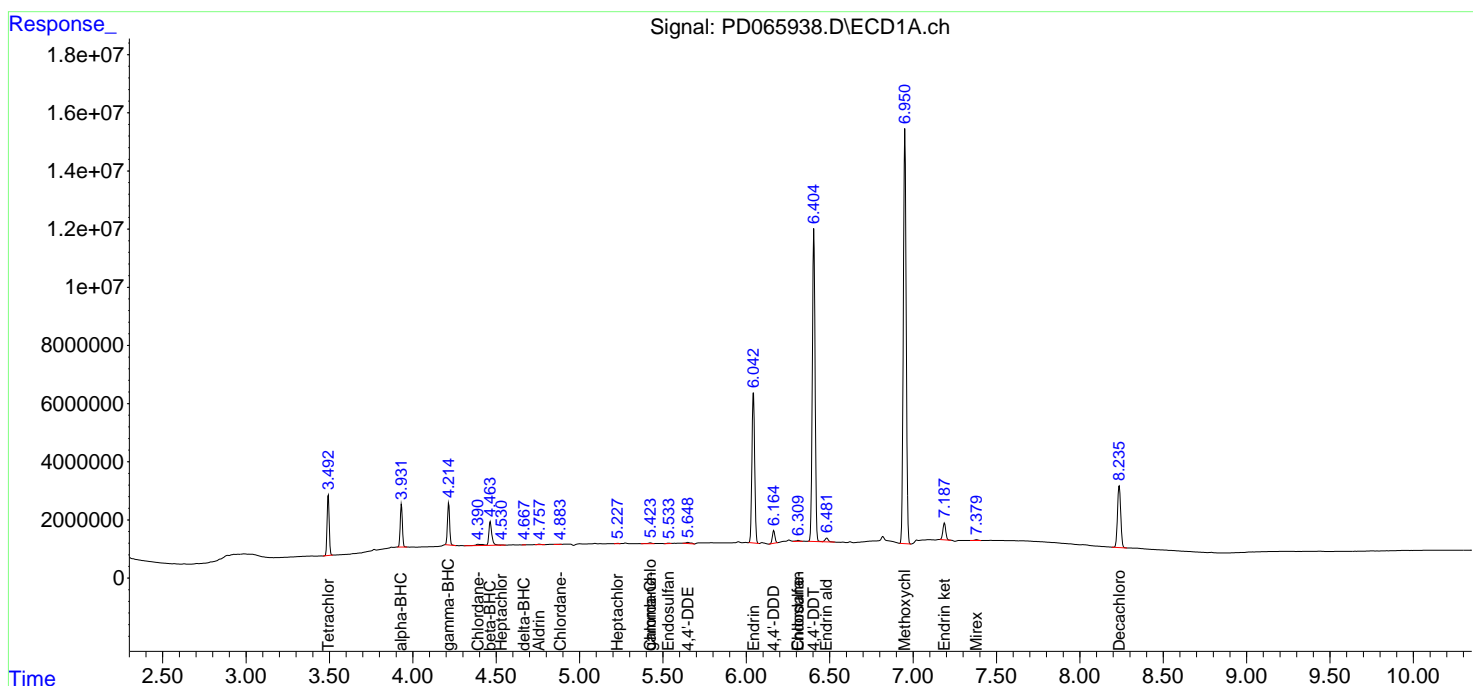
(f)=RT Delta > 1/2 Window (#)=Amounts differ by > 25% (m)=manual int.

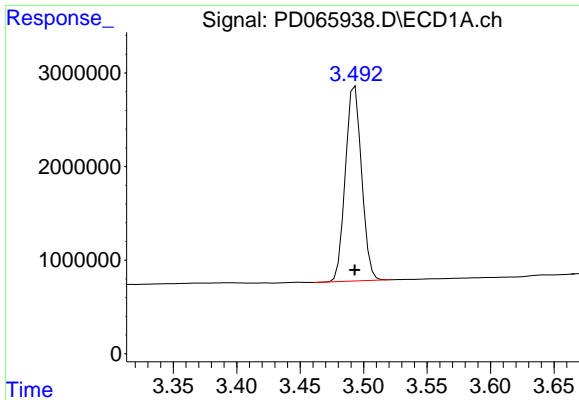
Data Path : Z:\pestpcbsrv\HPCHEM1\ECD_D\Data\PD092821\
 Data File : PD065938.D
 Signal(s) : Signal #1: ECD1A.ch Signal #2: ECD2B.ch
 Acq On : 28 Sep 2021 10:48
 Operator : AR\AJ
 Sample : PEM
 Misc :
 ALS Vial : 3 Sample Multiplier: 1

Instrument :
 ECD_D
 ClientSampled :
 PEM

Integration File signal 1: autoint1.e
 Integration File signal 2: autoint2.e
 Quant Time: Sep 28 16:18:36 2021
 Quant Method : Z:\pestpcbsrv\HPCHEM1\ECD_D\Method\PD092221.M
 Quant Title : GC Extractables
 QLast Update : Thu Sep 23 12:18:33 2021
 Response via : Initial Calibration
 Integrator: ChemStation

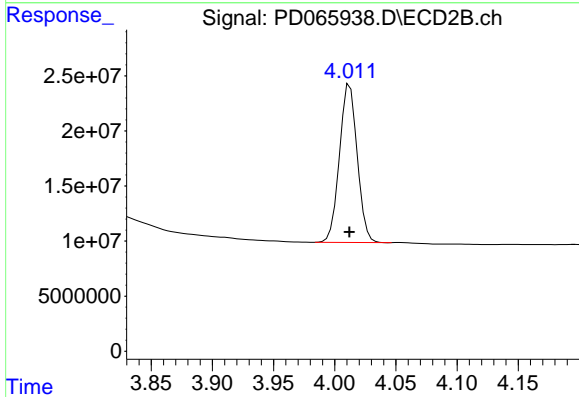
Volume Inj. : 2 µl
 Signal #1 Phase : ZB-MR2 Signal #2 Phase: ZB-MR1
 Signal #1 Info : 30M x 0.32mm x0.2 Signal #2 Info : 30M x 0.32mm x 0.50µm



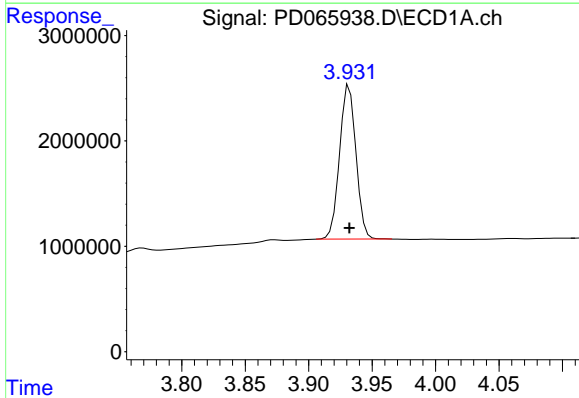


#1 Tetrachloro-m-xylene
 R.T.: 3.493 min
 Delta R.T.: 0.000 min
 Response: 18498658
 Conc: 24.98 ng/ml

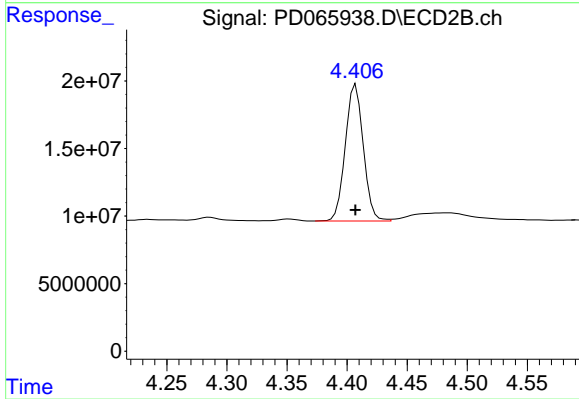
Instrument :
 ECD_D
 ClientSampleId :
 PEM



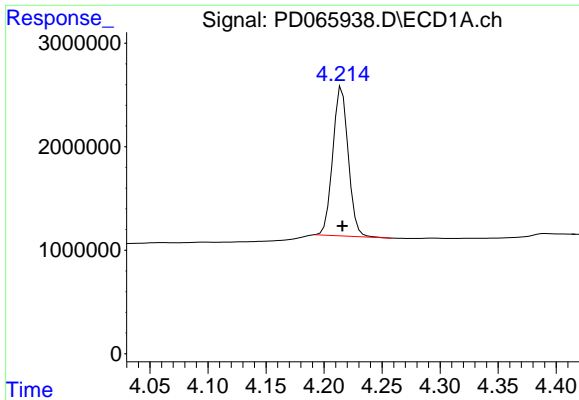
#1 Tetrachloro-m-xylene
 R.T.: 4.012 min
 Delta R.T.: 0.000 min
 Response: 145065292
 Conc: 25.26 ng/ml



#2 alpha-BHC
 R.T.: 3.932 min
 Delta R.T.: 0.000 min
 Response: 13150744
 Conc: 11.71 ng/ml

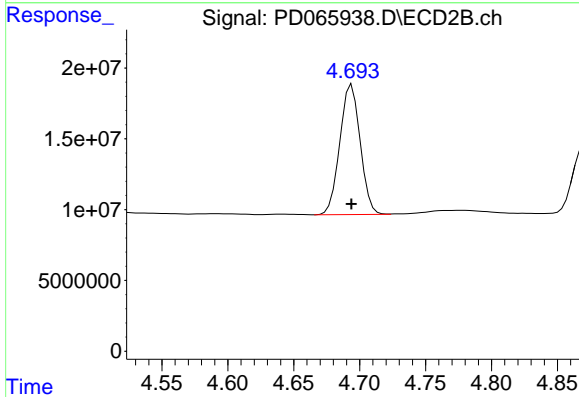


#2 alpha-BHC
 R.T.: 4.407 min
 Delta R.T.: 0.000 min
 Response: 105456895
 Conc: 12.54 ng/ml

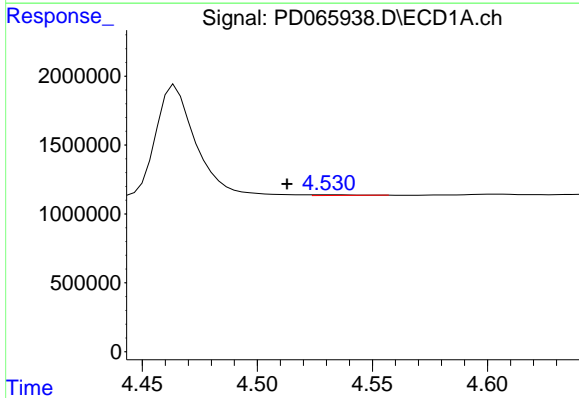


#3 gamma-BHC (Lindane)
 R.T.: 4.215 min
 Delta R.T.: 0.000 min
 Response: 13376081
 Conc: 11.93 ng/ml

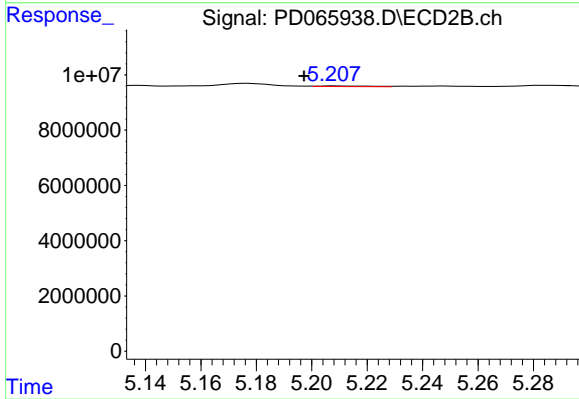
Instrument :
 ECD_D
 ClientSampleId :
 PEM



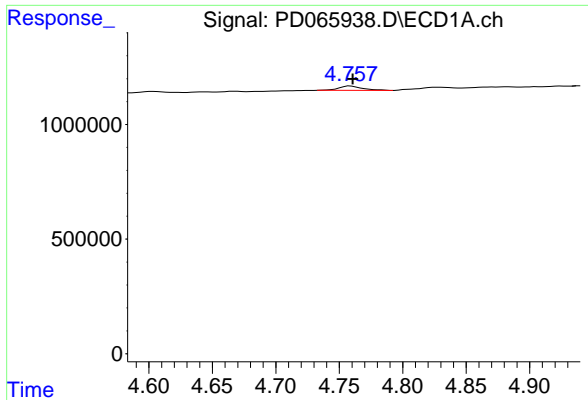
#3 gamma-BHC (Lindane)
 R.T.: 4.694 min
 Delta R.T.: 0.000 min
 Response: 98569675
 Conc: 12.76 ng/ml



#4 Heptachlor
 R.T.: 4.533 min
 Delta R.T.: 0.020 min
 Response: 78167
 Conc: 0.07 ng/ml

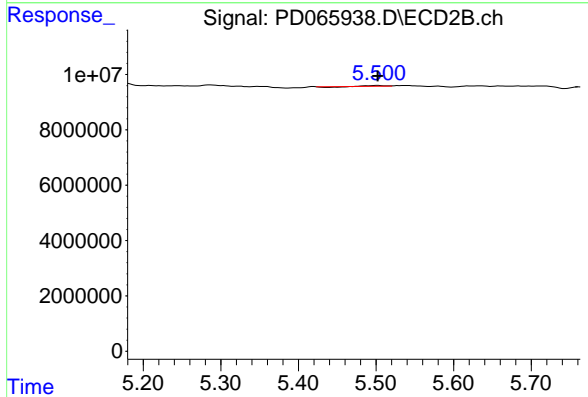


#4 Heptachlor
 R.T.: 5.209 min
 Delta R.T.: 0.012 min
 Response: 267889
 Conc: 0.04 ng/ml

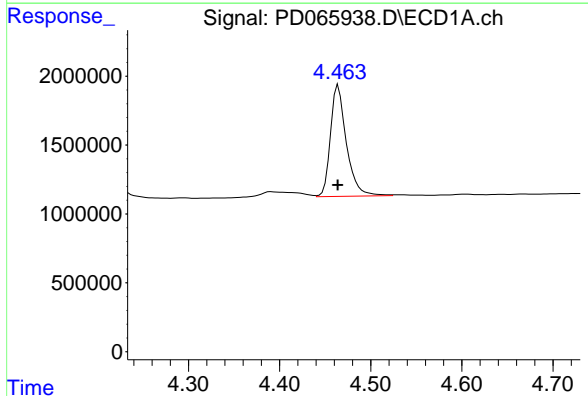


#5 Aldrin
 R.T.: 4.759 min
 Delta R.T.: -0.002 min
 Response: 247492
 Conc: 0.22 ng/ml

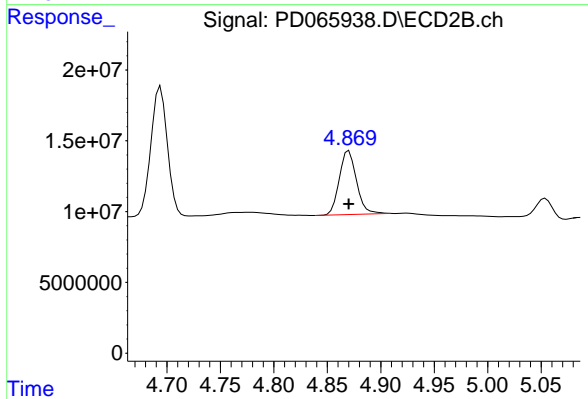
Instrument :
 ECD_D
 ClientSampleId :
 PEM



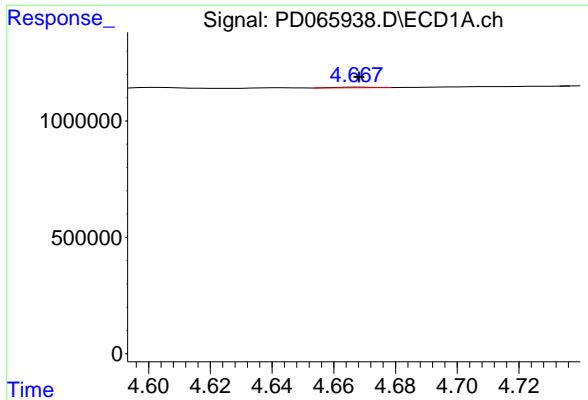
#5 Aldrin
 R.T.: 5.502 min
 Delta R.T.: 0.000 min
 Response: 88866
 Conc: 0.01 ng/ml



#6 beta-BHC
 R.T.: 4.465 min
 Delta R.T.: 0.000 min
 Response: 9815503
 Conc: 17.19 ng/ml

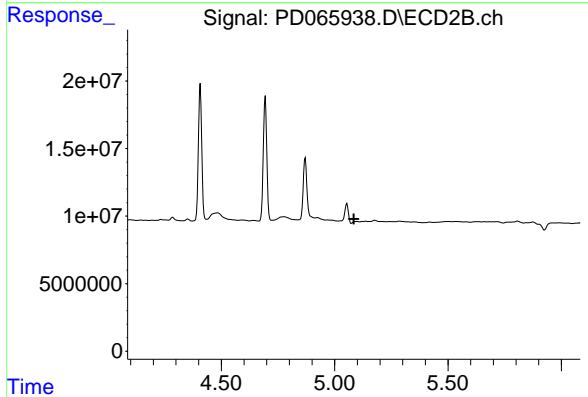


#6 beta-BHC
 R.T.: 4.870 min
 Delta R.T.: 0.000 min
 Response: 50718553
 Conc: 13.72 ng/ml

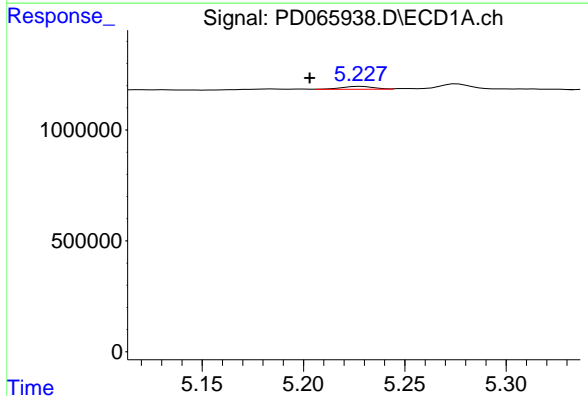


#7 delta-BHC
 R.T.: 4.668 min
 Delta R.T.: 0.000 min
 Response: 19235
 Conc: 0.02 ng/ml

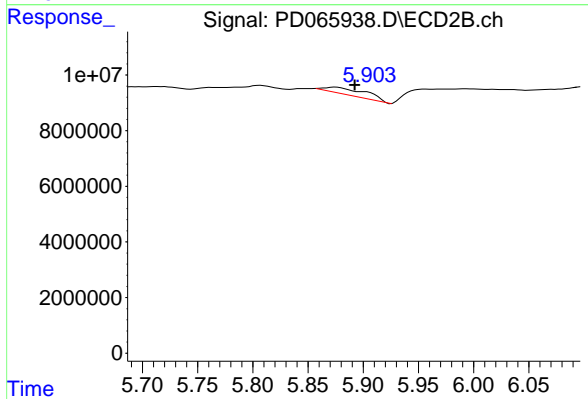
Instrument :
 ECD_D
 ClientSampleId :
 PEM



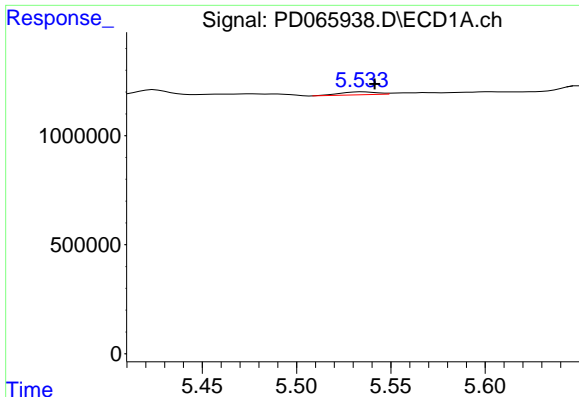
#7 delta-BHC
 R.T.: 5.097 min
 Delta R.T.: 0.012 min
 Response: -3417813
 Conc: N.D.



#8 Heptachlor epoxide
 R.T.: 5.228 min
 Delta R.T.: 0.025 min
 Response: 139518
 Conc: 0.12 ng/ml



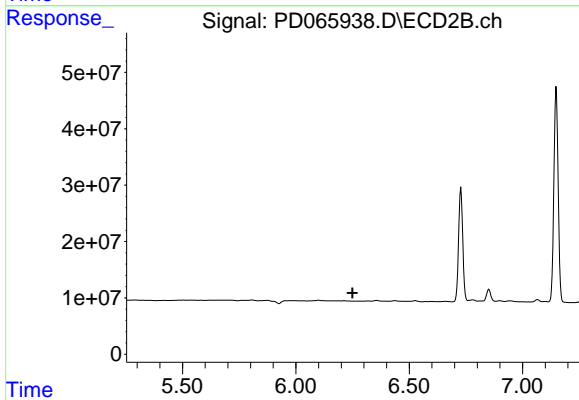
#8 Heptachlor epoxide
 R.T.: 5.875 min
 Delta R.T.: -0.017 min
 Response: 6482246
 Conc: 1.25 ng/ml



#9 Endosulfan I

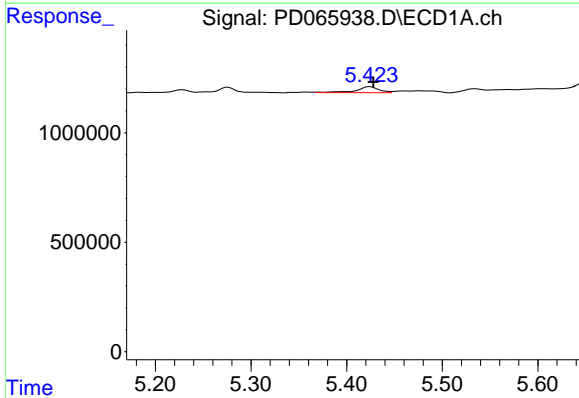
R.T.: 5.535 min
 Delta R.T.: -0.007 min
 Response: 177004
 Conc: 0.16 ng/ml

Instrument :
 ECD_D
 ClientSampled :
 PEM



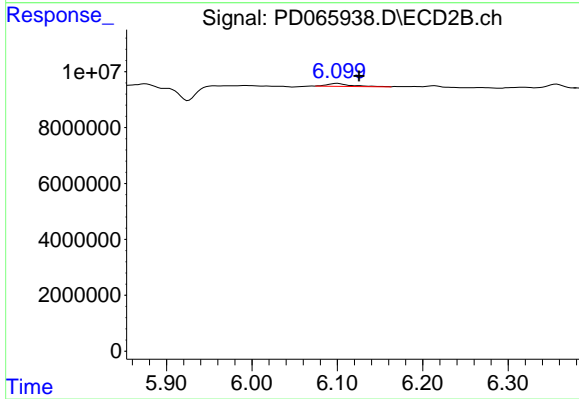
#9 Endosulfan I

R.T.: 0.000 min
 Exp R.T. : 6.250 min
 Response: 0
 Conc: N.D.



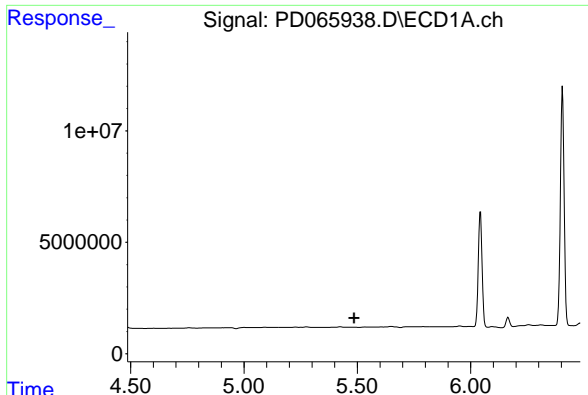
#10 gamma-Chlordane

R.T.: 5.425 min
 Delta R.T.: -0.003 min
 Response: 458814
 Conc: 0.38 ng/ml



#10 gamma-Chlordane

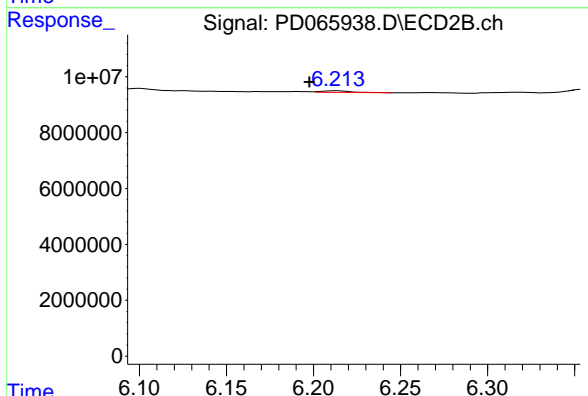
R.T.: 6.100 min
 Delta R.T.: -0.025 min
 Response: 2064700
 Conc: 0.34 ng/ml



#11 alpha-Chlordane

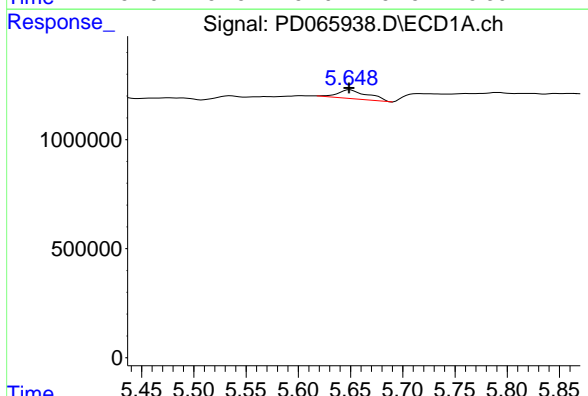
R.T.: 0.000 min
 Exp R.T.: 5.486 min
 Response: 0
 Conc: N.D.

Instrument :
 ECD_D
 ClientSampleId :
 PEM



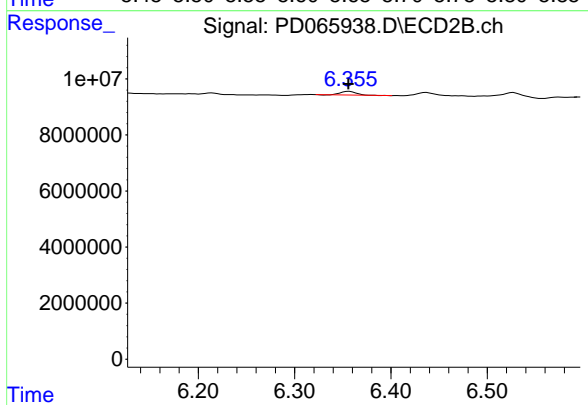
#11 alpha-Chlordane

R.T.: 6.214 min
 Delta R.T.: 0.016 min
 Response: 689749
 Conc: 0.11 ng/ml



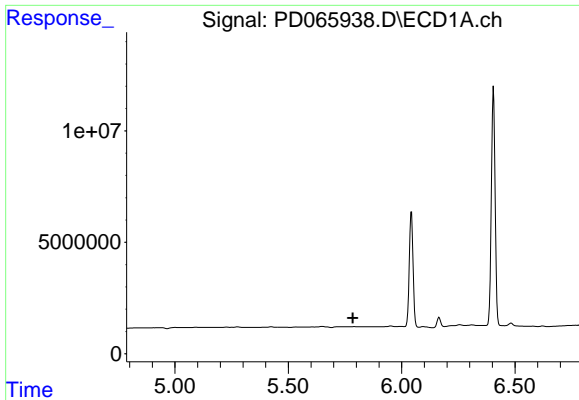
#12 4,4'-DDE

R.T.: 5.650 min
 Delta R.T.: 0.000 min
 Response: 828949
 Conc: 0.76 ng/ml



#12 4,4'-DDE

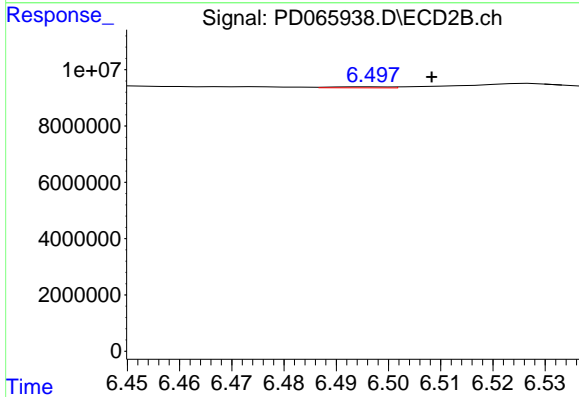
R.T.: 6.357 min
 Delta R.T.: 0.001 min
 Response: 1451159
 Conc: 0.25 ng/ml



#13 Dieldrin

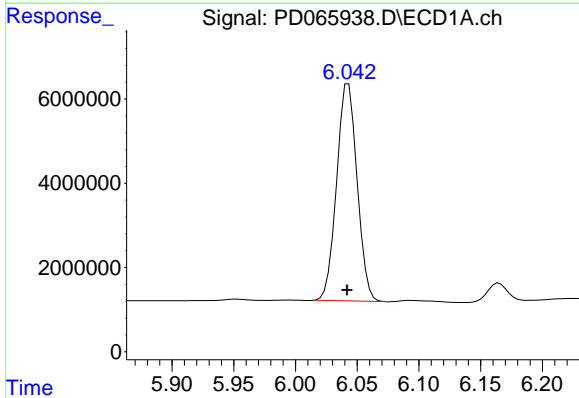
R.T.: 0.000 min
 Exp R.T.: 5.784 min
 Response: 0
 Conc: N.D.

Instrument :
 ECD_D
 ClientSampleId :
 PEM



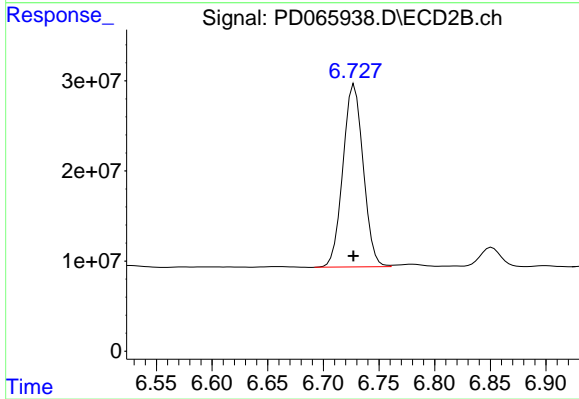
#13 Dieldrin

R.T.: 6.498 min
 Delta R.T.: -0.011 min
 Response: 301649
 Conc: 0.05 ng/ml



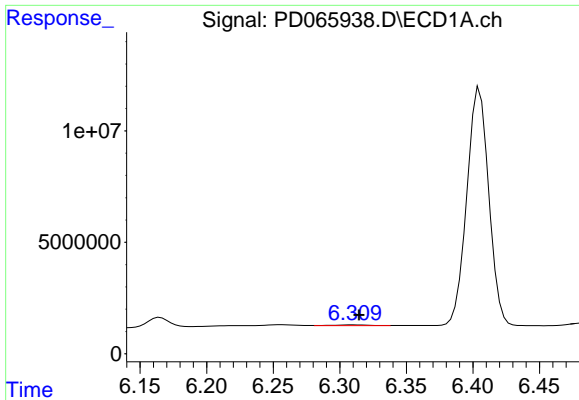
#14 Endrin

R.T.: 6.043 min
 Delta R.T.: 0.001 min
 Response: 59488904
 Conc: 56.22 ng/ml



#14 Endrin

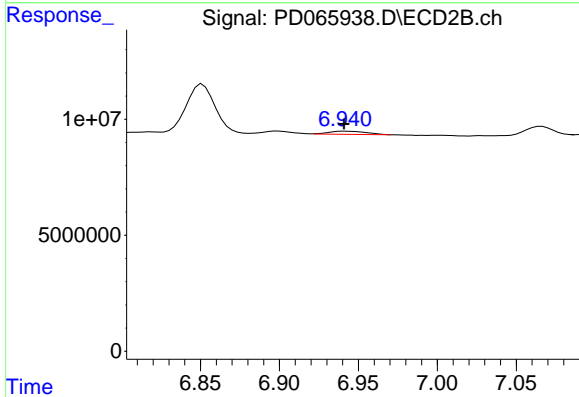
R.T.: 6.728 min
 Delta R.T.: 0.000 min
 Response: 257109809
 Conc: 52.15 ng/ml



#15 Endosulfan II

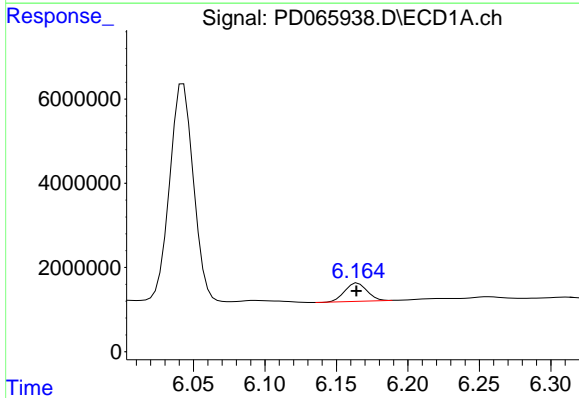
R.T.: 6.311 min
 Delta R.T.: -0.004 min
 Response: 547593
 Conc: 0.51 ng/ml

Instrument :
 ECD_D
 ClientSampled :
 PEM



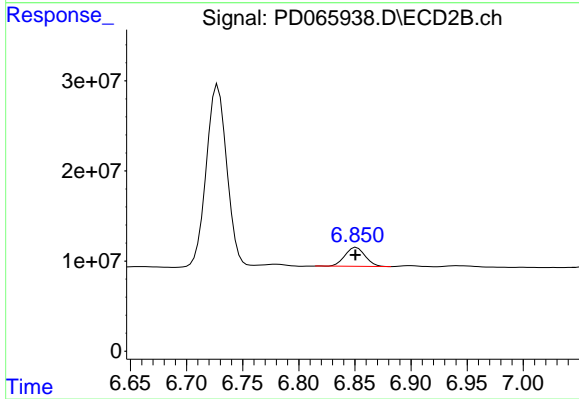
#15 Endosulfan II

R.T.: 6.941 min
 Delta R.T.: 0.000 min
 Response: 2054378
 Conc: 0.42 ng/ml



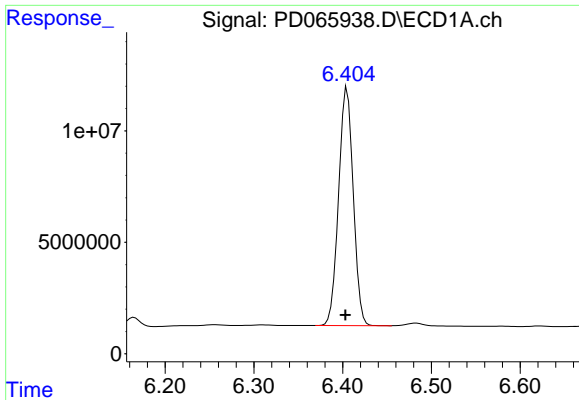
#16 4,4'-DDD

R.T.: 6.165 min
 Delta R.T.: 0.000 min
 Response: 4692507
 Conc: 4.78 ng/ml



#16 4,4'-DDD

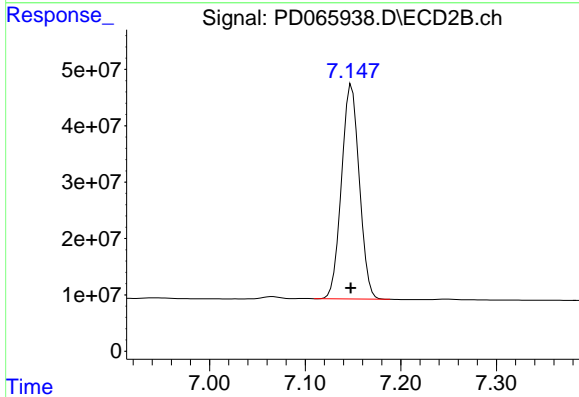
R.T.: 6.851 min
 Delta R.T.: 0.000 min
 Response: 26275388
 Conc: 5.35 ng/ml



#17 4,4'-DDT

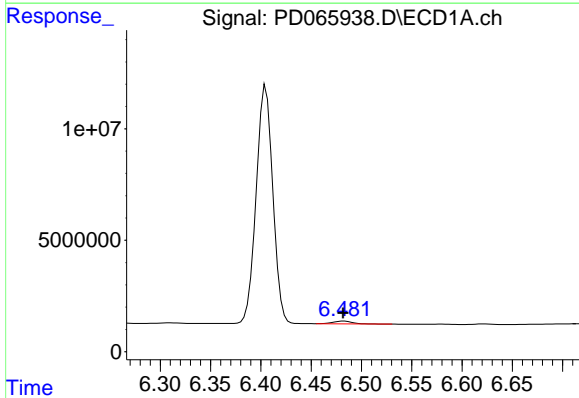
R.T.: 6.405 min
 Delta R.T.: 0.002 min
 Response: 122692459
 Conc: 111.47 ng/ml

Instrument :
 ECD_D
 ClientSampled :
 PEM



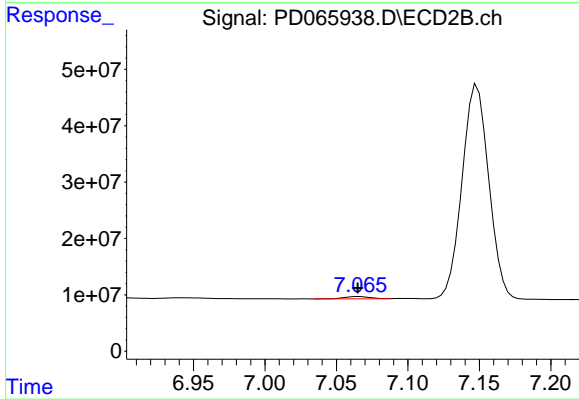
#17 4,4'-DDT

R.T.: 7.149 min
 Delta R.T.: 0.000 min
 Response: 494736183
 Conc: 97.94 ng/ml



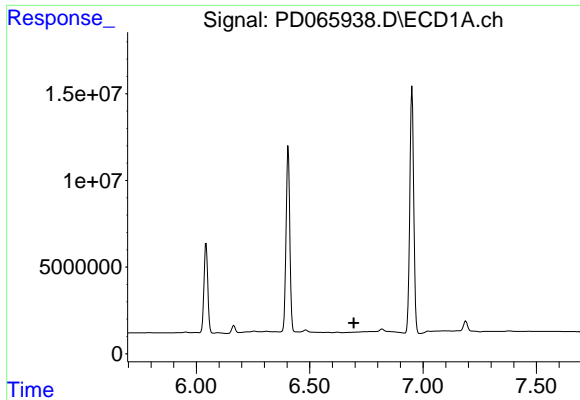
#18 Endrin aldehyde

R.T.: 6.483 min
 Delta R.T.: 0.000 min
 Response: 1733087
 Conc: 1.96 ng/ml



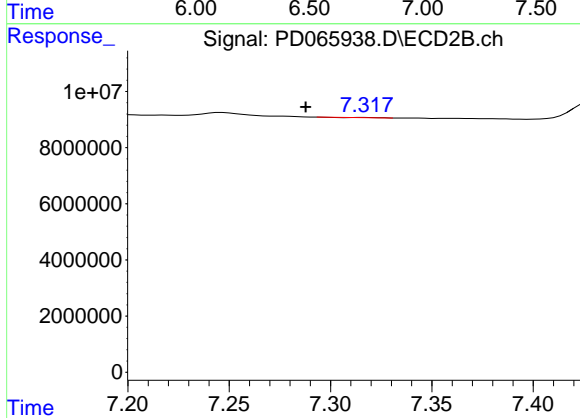
#18 Endrin aldehyde

R.T.: 7.066 min
 Delta R.T.: 0.001 min
 Response: 4762251
 Conc: 1.22 ng/ml

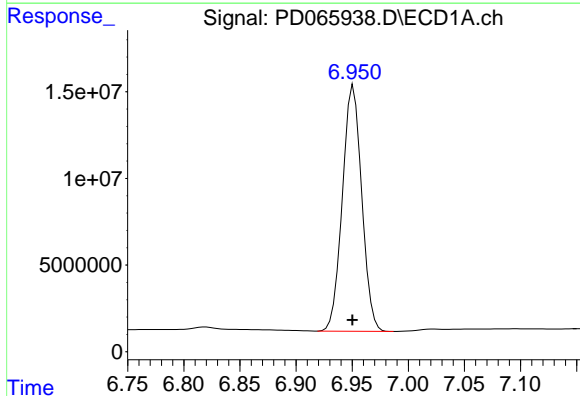


#19 Endosulfan Sulfate
 R.T.: 0.000 min
 Exp R.T.: 6.694 min
 Response: 0
 Conc: N.D.

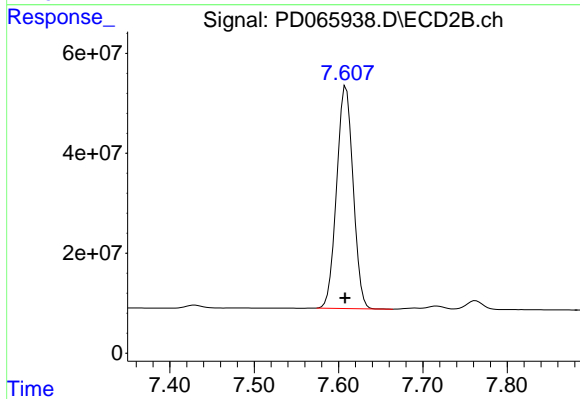
Instrument :
 ECD_D
 ClientSampleId :
 PEM



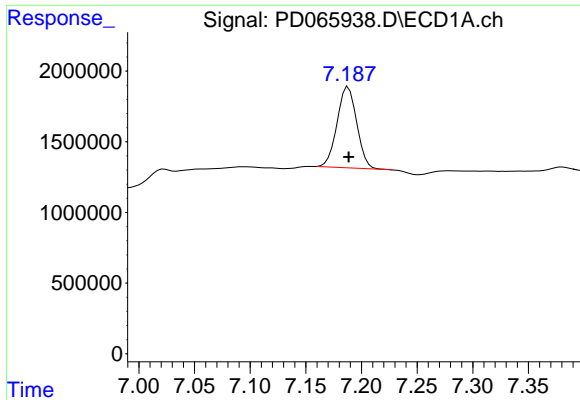
#19 Endosulfan Sulfate
 R.T.: 7.316 min
 Delta R.T.: 0.028 min
 Response: 25134
 Conc: 0.01 ng/ml



#20 Methoxychlor
 R.T.: 6.951 min
 Delta R.T.: 0.001 min
 Response: 170195160
 Conc: 249.06 ng/ml

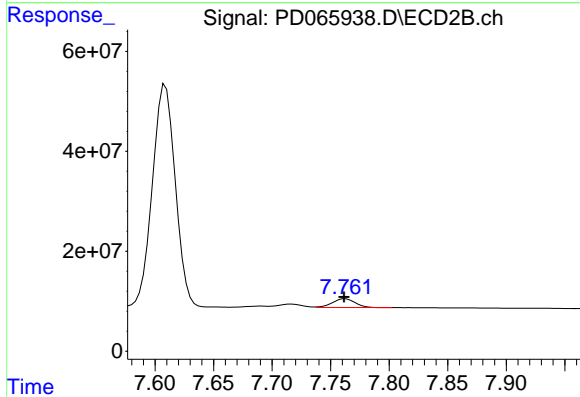


#20 Methoxychlor
 R.T.: 7.609 min
 Delta R.T.: 0.001 min
 Response: 603450025
 Conc: 229.31 ng/ml

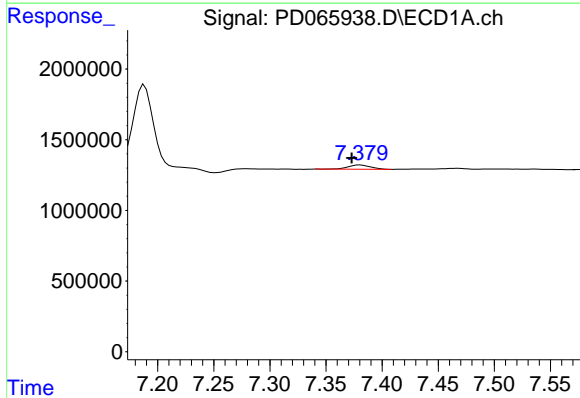


#21 Endrin ketone
 R.T.: 7.188 min
 Delta R.T.: 0.000 min
 Response: 7034118
 Conc: 4.99 ng/ml

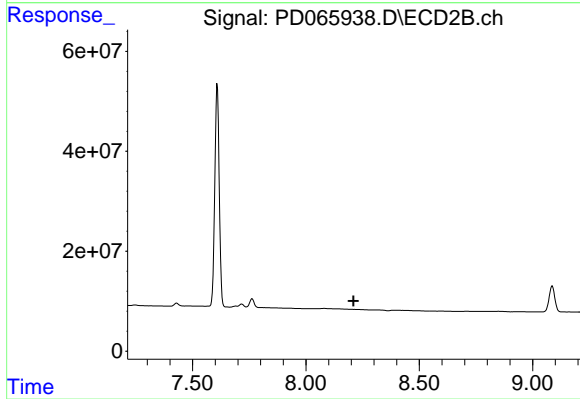
Instrument :
 ECD_D
 ClientSampled :
 PEM



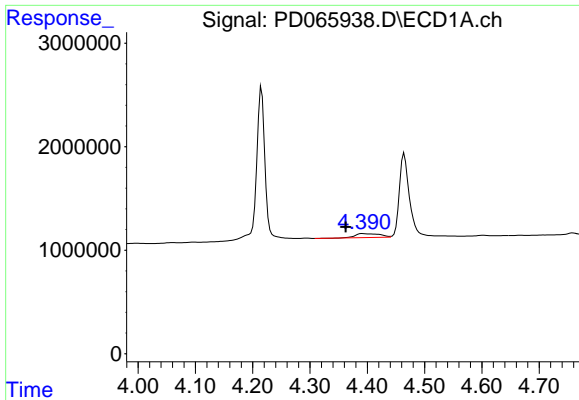
#21 Endrin ketone
 R.T.: 7.763 min
 Delta R.T.: 0.001 min
 Response: 23558723
 Conc: 4.13 ng/ml



#22 Mirex
 R.T.: 7.381 min
 Delta R.T.: 0.008 min
 Response: 412419
 Conc: 0.34 ng/ml

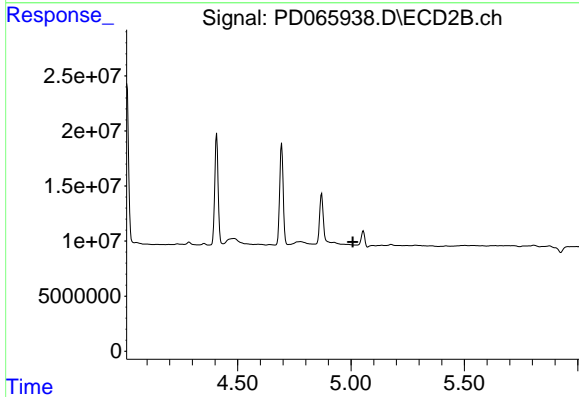


#22 Mirex
 R.T.: 0.000 min
 Exp R.T. : 8.210 min
 Response: 0
 Conc: N.D.

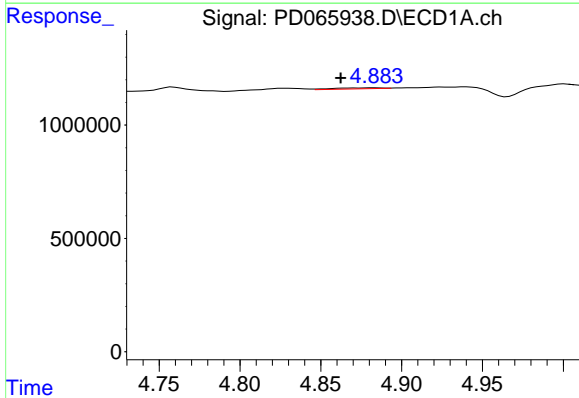


#23 Chlordane-1
 R.T.: 4.391 min
 Delta R.T.: 0.028 min
 Response: 1166788
 Conc: 34.83 ng/ml

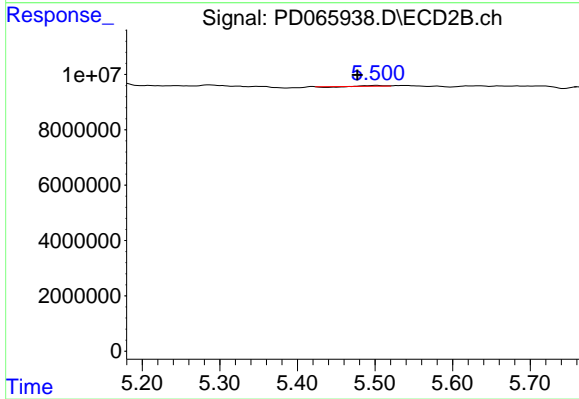
Instrument :
 ECD_D
 ClientSampled :
 PEM



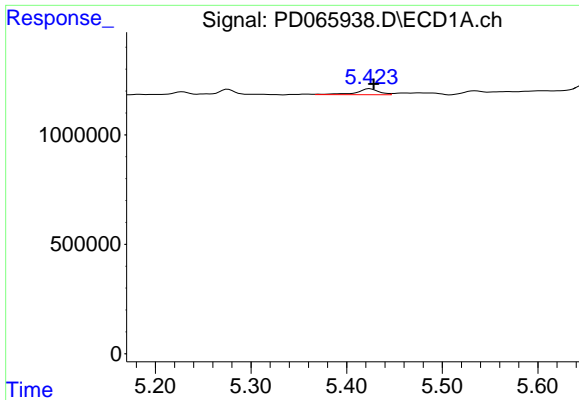
#23 Chlordane-1
 R.T.: 0.000 min
 Exp R.T. : 5.007 min
 Response: 0
 Conc: N.D.



#24 Chlordane-2
 R.T.: 4.884 min
 Delta R.T.: 0.022 min
 Response: 100804
 Conc: 2.48 ng/ml

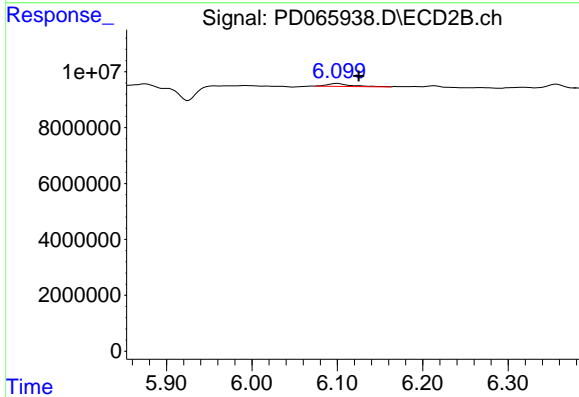


#24 Chlordane-2
 R.T.: 5.502 min
 Delta R.T.: 0.024 min
 Response: 88866
 Conc: 0.38 ng/ml

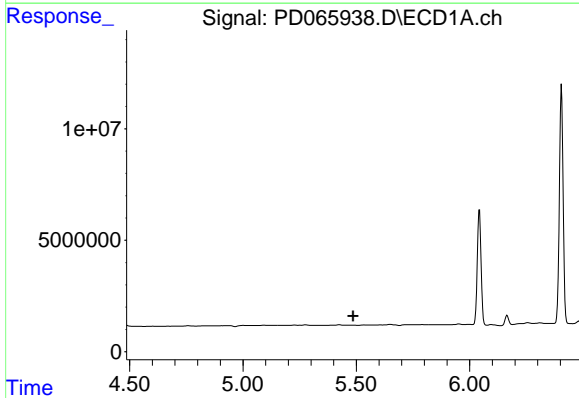


#25 Chlordane-3
 R.T.: 5.425 min
 Delta R.T.: -0.004 min
 Response: 458814
 Conc: 3.89 ng/ml

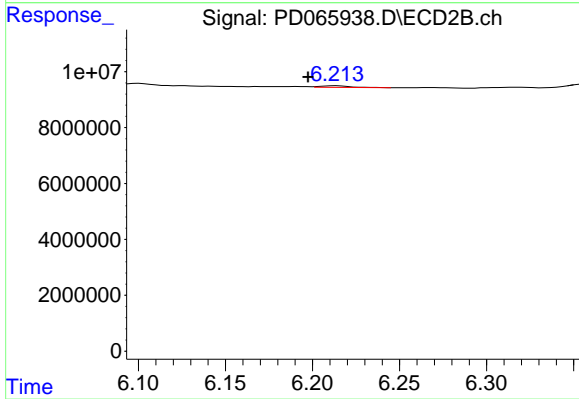
Instrument :
 ECD_D
 ClientSampleId :
 PEM



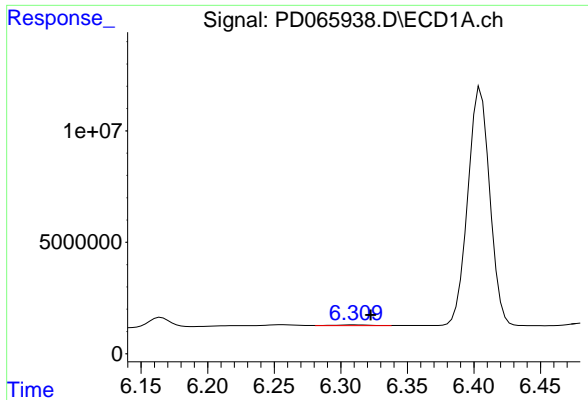
#25 Chlordane-3
 R.T.: 6.100 min
 Delta R.T.: -0.025 min
 Response: 2064700
 Conc: 2.52 ng/ml



#26 Chlordane-4
 R.T.: 0.000 min
 Exp R.T. : 5.486 min
 Response: 0
 Conc: N.D.

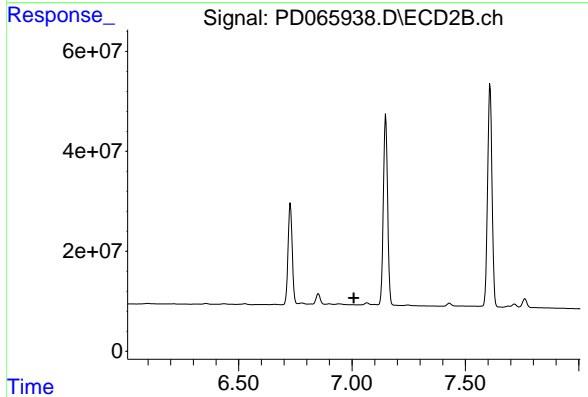


#26 Chlordane-4
 R.T.: 6.214 min
 Delta R.T.: 0.016 min
 Response: 689749
 Conc: 0.72 ng/ml

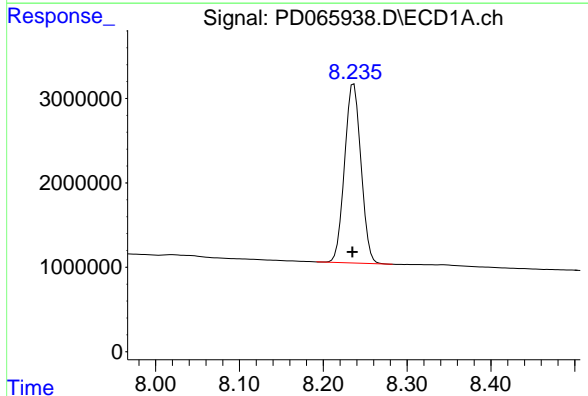


#27 Chlordane-5
 R.T.: 6.311 min
 Delta R.T.: -0.012 min
 Response: 547593
 Conc: 11.27 ng/ml

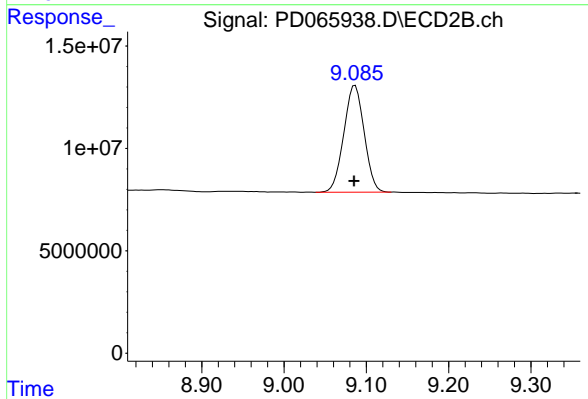
Instrument :
 ECD_D
 ClientSampleId :
 PEM



#27 Chlordane-5
 R.T.: 0.000 min
 Exp R.T. : 7.008 min
 Response: 0
 Conc: N.D.



#28 Decachlorobiphenyl
 R.T.: 8.236 min
 Delta R.T.: 0.002 min
 Response: 28921532
 Conc: 21.17 ng/ml



#28 Decachlorobiphenyl
 R.T.: 9.086 min
 Delta R.T.: 0.001 min
 Response: 89740597
 Conc: 23.19 ng/ml