

Data Path : Z:\pestpcbsrv\HPCHEM1\ECD\_D\Data\PD092821\  
 Data File : PD065945.D  
 Signal(s) : Signal #1: ECD1A.ch Signal #2: ECD2B.ch  
 Acq On : 28 Sep 2021 12:39  
 Operator : AR\AJ  
 Sample : M3946-01MS 10X  
 Misc :  
 ALS Vial : 10 Sample Multiplier: 1

Instrument :  
 ECD\_D  
 ClientSampleId :  
 PL-05-092421MS

Integration File signal 1: autoint1.e  
 Integration File signal 2: autoint2.e  
 Quant Time: Sep 28 16:20:12 2021  
 Quant Method : Z:\pestpcbsrv\HPCHEM1\ECD\_D\Method\PD092221.M  
 Quant Title : GC Extractables  
 QLast Update : Thu Sep 23 12:18:33 2021  
 Response via : Initial Calibration  
 Integrator: ChemStation

Volume Inj. : 2 µl  
 Signal #1 Phase : ZB-MR2 Signal #2 Phase: ZB-MR1  
 Signal #1 Info : 30M x 0.32mm x0.2 Signal #2 Info : 30M x 0.32mm x 0.50µm

Compound	RT#1	RT#2	Resp#1	Resp#2	ng/ml	ng/ml
-----						
System Monitoring Compounds						
1) SA Tetrachlo...	3.493	4.012	2429591	19681179	3.281	3.427
28) SA Decachlor...	8.235	9.086	3508328	14283034	2.568	3.691 #
Target Compounds						
2) A alpha-BHC	3.932	4.407	7398583	60823540	6.588	7.234
3) MA gamma-BHC...	4.216	4.694	8147558	61311435	7.266	7.936
4) MA Heptachlor	4.513	5.197	8426160	53203098	7.064	7.333
5) MB Aldrin	4.760	5.503	5158541	47307775	4.611	7.032 #
6) B beta-BHC	4.464	4.868	4980189	35147088	8.724	9.510
7) B delta-BHC	4.668	5.087	5555815	47141956	4.915	6.550 #
8) B Heptachlo...	5.203	5.892	8156727	47263512	7.285	9.146 #
9) A Endosulfan I	5.542	6.250	6874872	39005680	6.322	7.057
10) B gamma-Chl...	5.427	6.126	8866745	37044107	7.343	6.176
11) B alpha-Chl...	5.486	6.198	8426102	44634782	7.118	7.437
12) B 4,4'-DDE	5.648	6.356	7859773	47411967	7.221	8.221
13) MA Dieldrin	5.784	6.508	9579566	40162102	8.265	6.815
14) MA Endrin	6.043	6.726	9278693	27912154	8.769	5.662 #
15) B Endosulfa...	6.314	6.941	7806632	33176781	7.226	6.849
16) A 4,4'-DDD	6.164	6.850	6099574	37483437	6.218	7.627
17) MA 4,4'-DDT	6.404	7.148	6518063	35692115	5.922	7.066
18) B Endrin al...	6.482	7.065	5726371	27806152	6.461	7.103
19) B Endosulfa...	6.694	7.287	11541055	34816512	10.112	7.059 #
20) A Methoxychlor	6.949	7.607	4698433	19994190	6.875	7.598
21) B Endrin ke...	7.188	7.761	7600423	43016495	5.396	7.543 #
22) Mirex	7.373	8.210	9340370	29352814	7.736	7.434
23) Chlordane-1	0.000	5.002	0	784032	N.D.	3.541 #
24) Chlordane-2	4.864	5.503f	3303454	47307775	81.343	204.519 #
25) Chlordane-3	5.427	6.126	8866745	37044107	75.260	45.173 #
26) Chlordane-4	5.486	6.198	8426102	44634782	85.315	46.535 #
27) Chlordane-5	6.314	6.996	7806632	74669	160.630	0.402 #

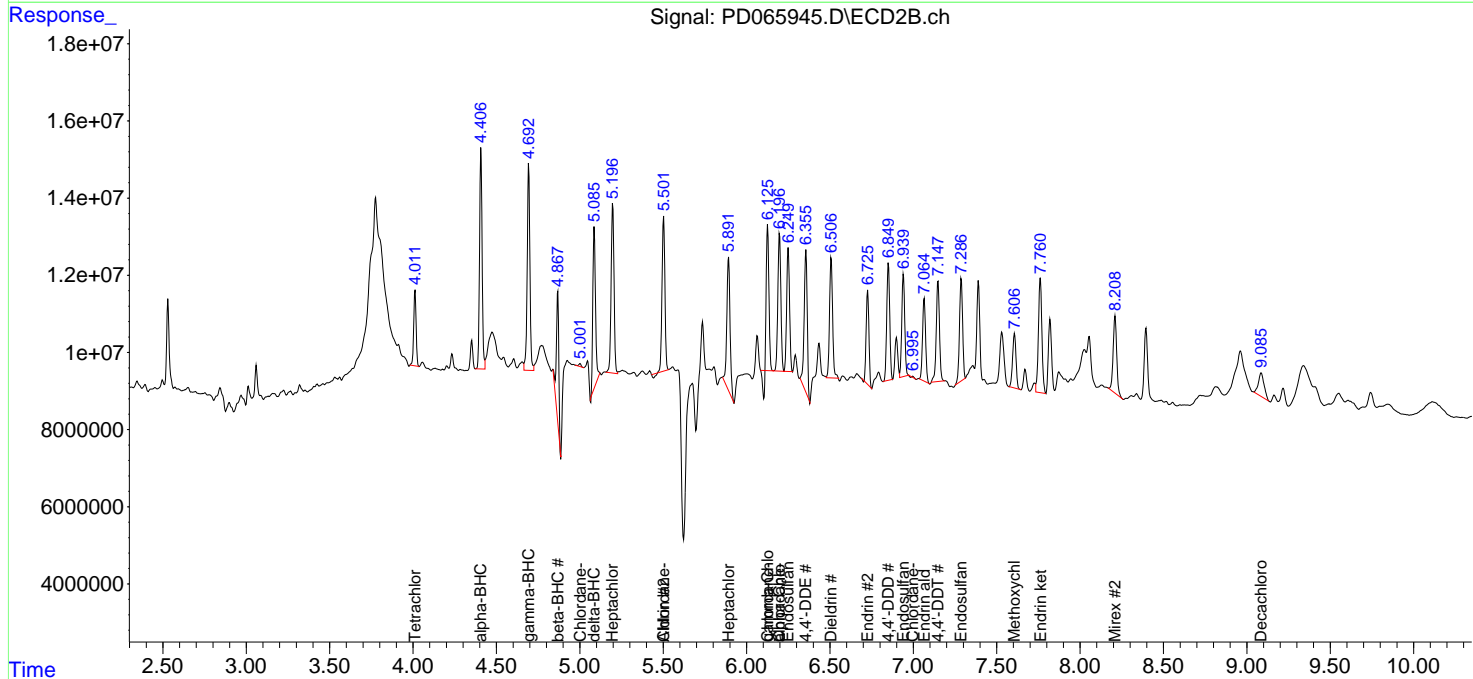
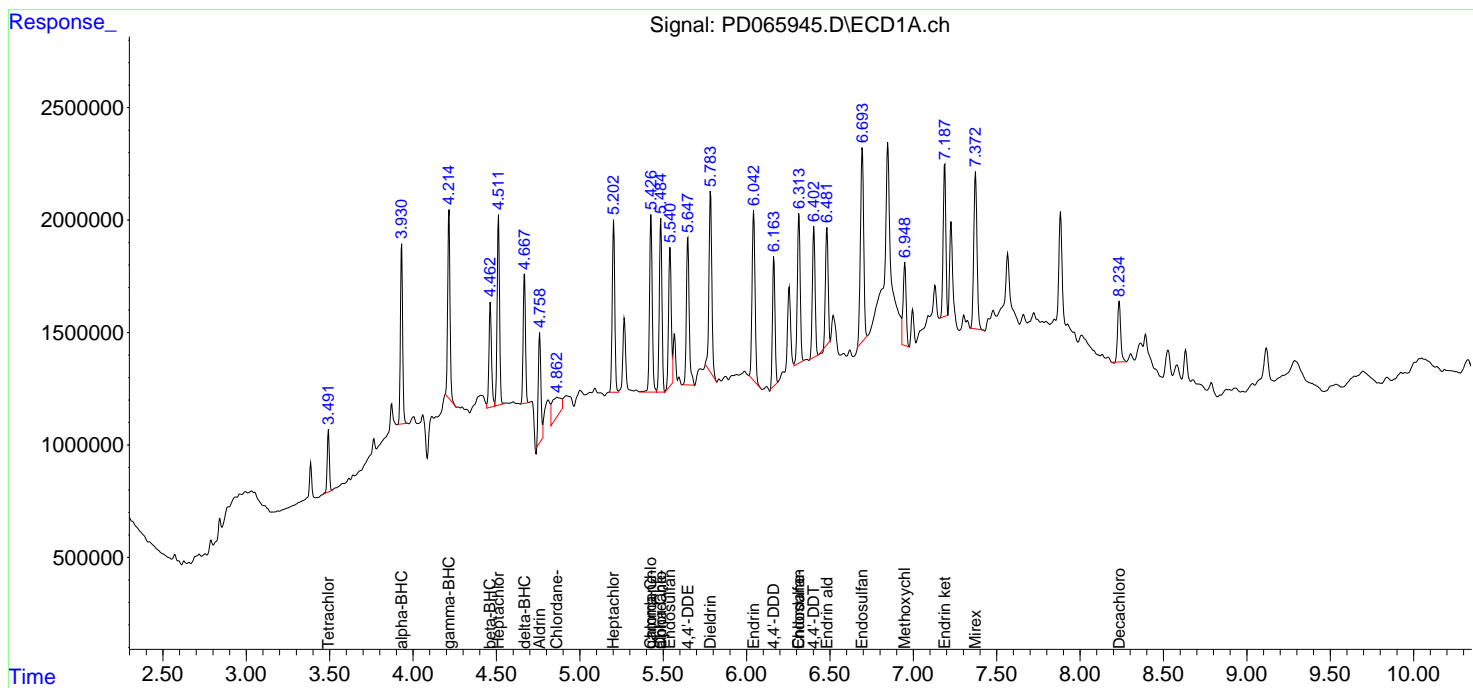
(f)=RT Delta > 1/2 Window (#)=Amounts differ by > 25% (m)=manual int.

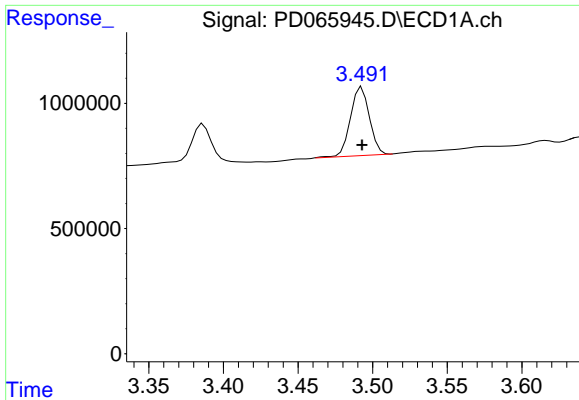
Data Path : Z:\pestpcbsrv\HPCHEM1\ECD\_D\Data\PD092821\  
 Data File : PD065945.D  
 Signal(s) : Signal #1: ECD1A.ch Signal #2: ECD2B.ch  
 Acq On : 28 Sep 2021 12:39  
 Operator : AR\AJ  
 Sample : M3946-01MS 10X  
 Misc :  
 ALS Vial : 10 Sample Multiplier: 1

Instrument :  
 ECD\_D  
 Client Sampled :  
 PL-05-092421MS

Integration File signal 1: autoint1.e  
 Integration File signal 2: autoint2.e  
 Quant Time: Sep 28 16:20:12 2021  
 Quant Method : Z:\pestpcbsrv\HPCHEM1\ECD\_D\Method\PD092221.M  
 Quant Title : GC Extractables  
 QLast Update : Thu Sep 23 12:18:33 2021  
 Response via : Initial Calibration  
 Integrator: ChemStation

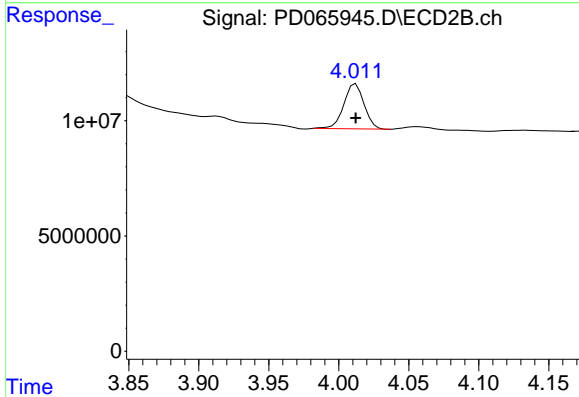
Volume Inj. : 2 µl  
 Signal #1 Phase : ZB-MR2 Signal #2 Phase: ZB-MR1  
 Signal #1 Info : 30M x 0.32mm x0.2 Signal #2 Info : 30M x 0.32mm x 0.50µm



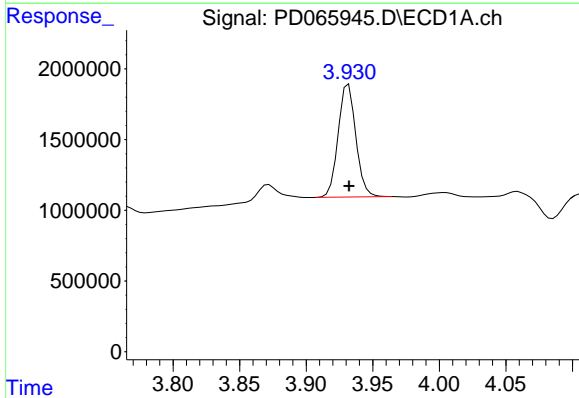


#1 Tetrachloro-m-xylene  
 R.T.: 3.493 min  
 Delta R.T.: 0.000 min  
 Response: 2429591  
 Conc: 3.28 ng/ml

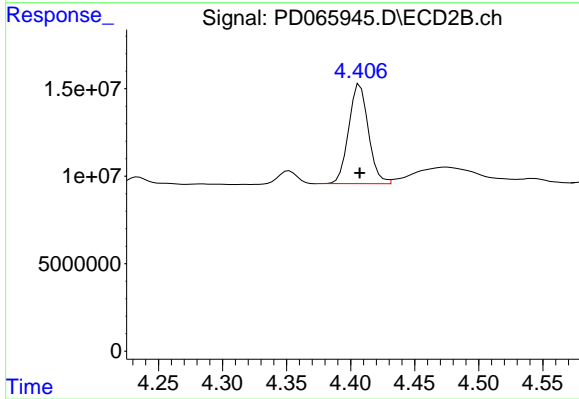
Instrument :  
 ECD\_D  
 ClientSampleId :  
 PL-05-092421MS



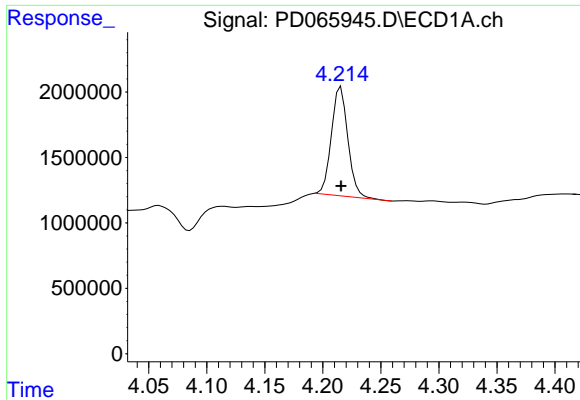
#1 Tetrachloro-m-xylene  
 R.T.: 4.012 min  
 Delta R.T.: 0.000 min  
 Response: 19681179  
 Conc: 3.43 ng/ml



#2 alpha-BHC  
 R.T.: 3.932 min  
 Delta R.T.: 0.000 min  
 Response: 7398583  
 Conc: 6.59 ng/ml

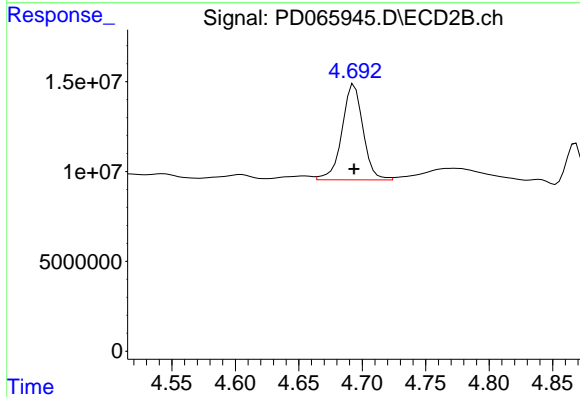


#2 alpha-BHC  
 R.T.: 4.407 min  
 Delta R.T.: 0.000 min  
 Response: 60823540  
 Conc: 7.23 ng/ml

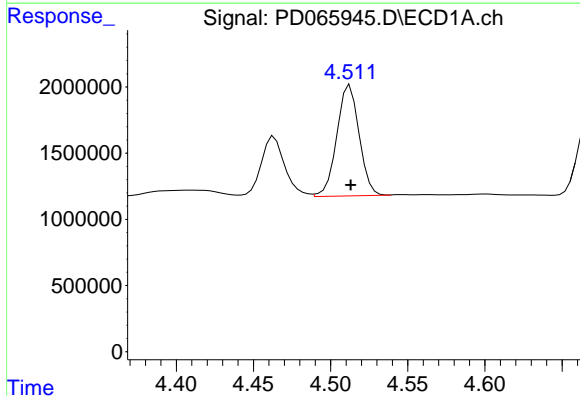


#3 gamma-BHC (Lindane)  
 R.T.: 4.216 min  
 Delta R.T.: 0.000 min  
 Response: 8147558  
 Conc: 7.27 ng/ml

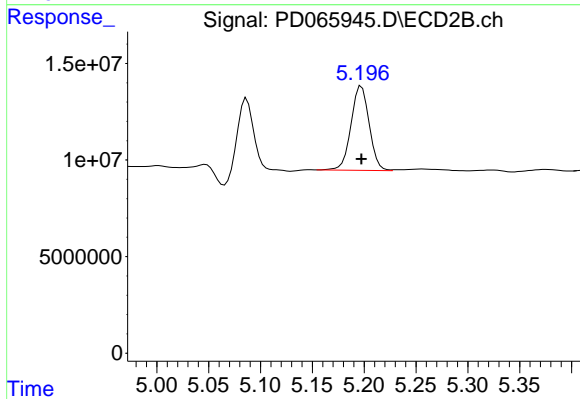
Instrument :  
 ECD\_D  
 ClientSampleId :  
 PL-05-092421MS



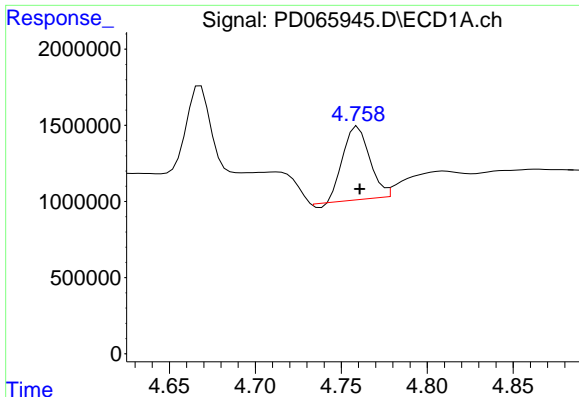
#3 gamma-BHC (Lindane)  
 R.T.: 4.694 min  
 Delta R.T.: 0.000 min  
 Response: 61311435  
 Conc: 7.94 ng/ml



#4 Heptachlor  
 R.T.: 4.513 min  
 Delta R.T.: 0.000 min  
 Response: 8426160  
 Conc: 7.06 ng/ml

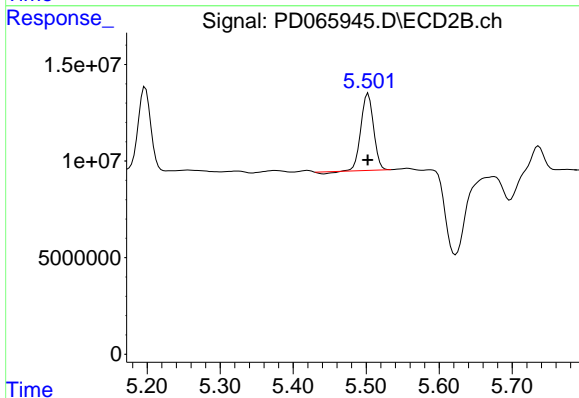


#4 Heptachlor  
 R.T.: 5.197 min  
 Delta R.T.: 0.000 min  
 Response: 53203098  
 Conc: 7.33 ng/ml

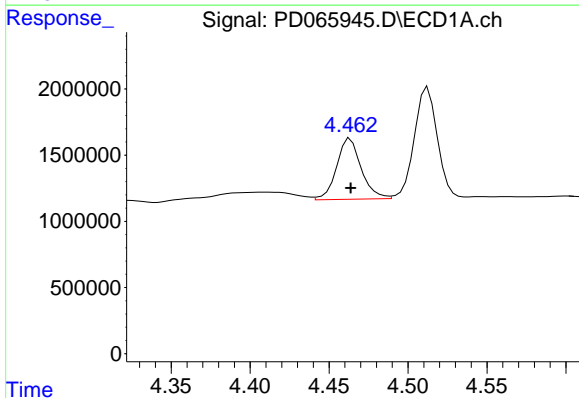


#5 Aldrin  
 R.T.: 4.760 min  
 Delta R.T.: 0.000 min  
 Response: 5158541  
 Conc: 4.61 ng/ml

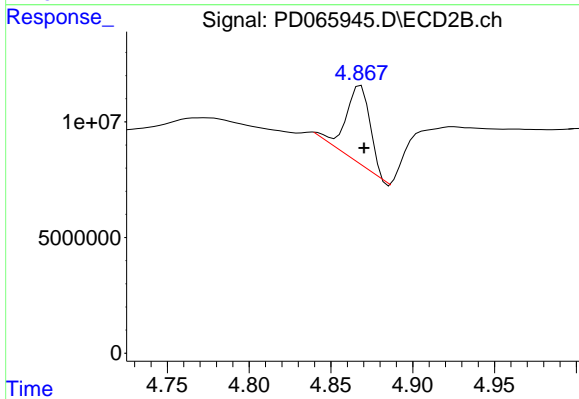
Instrument :  
 ECD\_D  
 ClientSampleId :  
 PL-05-092421MS



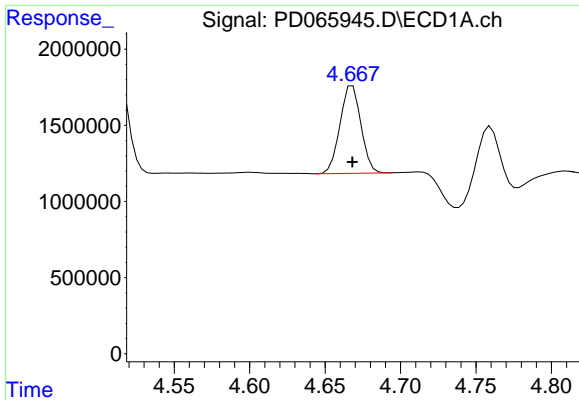
#5 Aldrin  
 R.T.: 5.503 min  
 Delta R.T.: 0.000 min  
 Response: 47307775  
 Conc: 7.03 ng/ml



#6 beta-BHC  
 R.T.: 4.464 min  
 Delta R.T.: 0.000 min  
 Response: 4980189  
 Conc: 8.72 ng/ml

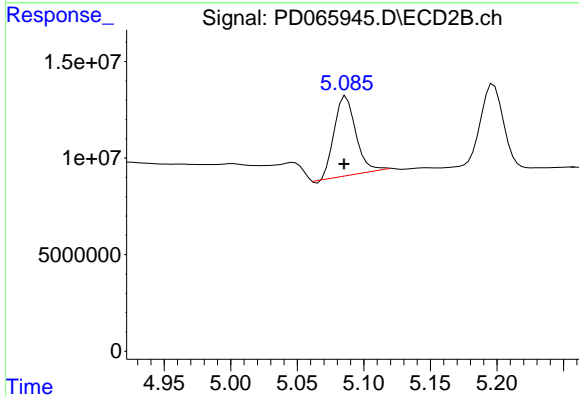


#6 beta-BHC  
 R.T.: 4.868 min  
 Delta R.T.: -0.002 min  
 Response: 35147088  
 Conc: 9.51 ng/ml

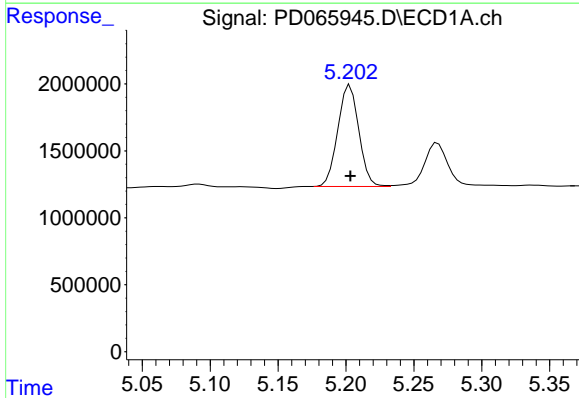


#7 delta-BHC  
 R.T.: 4.668 min  
 Delta R.T.: 0.000 min  
 Response: 5555815  
 Conc: 4.91 ng/ml

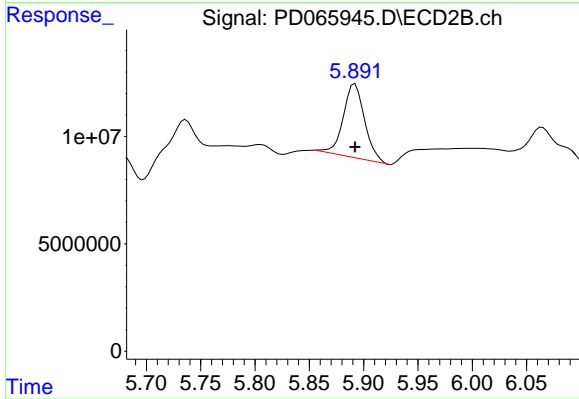
Instrument :  
 ECD\_D  
 ClientSampleId :  
 PL-05-092421MS



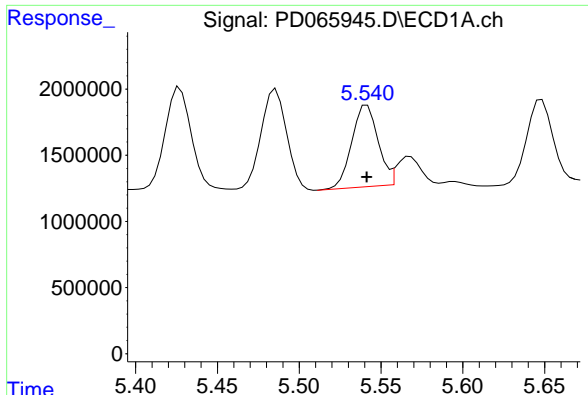
#7 delta-BHC  
 R.T.: 5.087 min  
 Delta R.T.: 0.002 min  
 Response: 47141956  
 Conc: 6.55 ng/ml



#8 Heptachlor epoxide  
 R.T.: 5.203 min  
 Delta R.T.: 0.000 min  
 Response: 8156727  
 Conc: 7.28 ng/ml



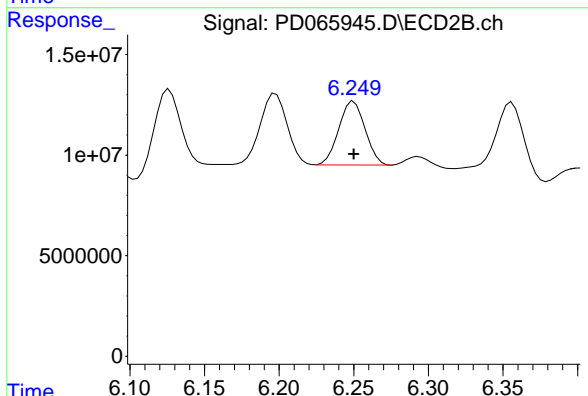
#8 Heptachlor epoxide  
 R.T.: 5.892 min  
 Delta R.T.: 0.000 min  
 Response: 47263512  
 Conc: 9.15 ng/ml



#9 Endosulfan I

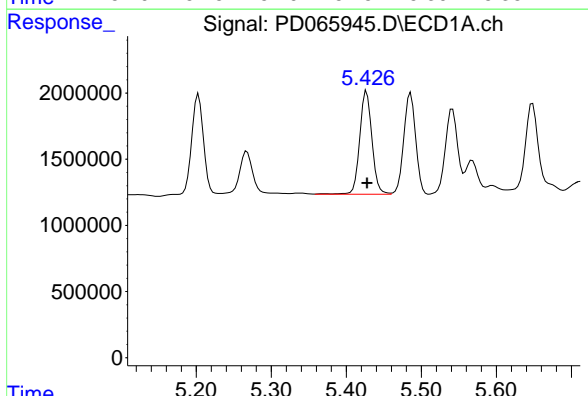
R.T.: 5.542 min  
 Delta R.T.: 0.000 min  
 Response: 6874872  
 Conc: 6.32 ng/ml

Instrument :  
 ECD\_D  
 ClientSampleId :  
 PL-05-092421MS



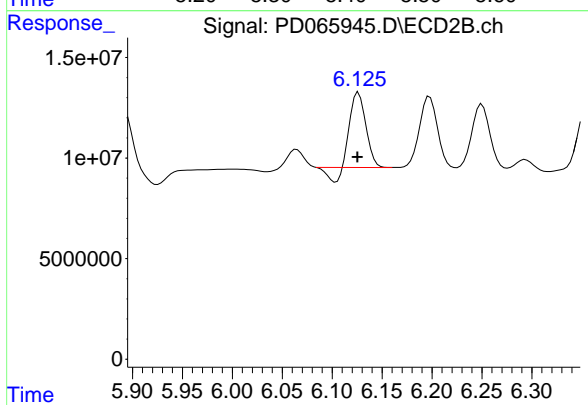
#9 Endosulfan I

R.T.: 6.250 min  
 Delta R.T.: 0.000 min  
 Response: 39005680  
 Conc: 7.06 ng/ml



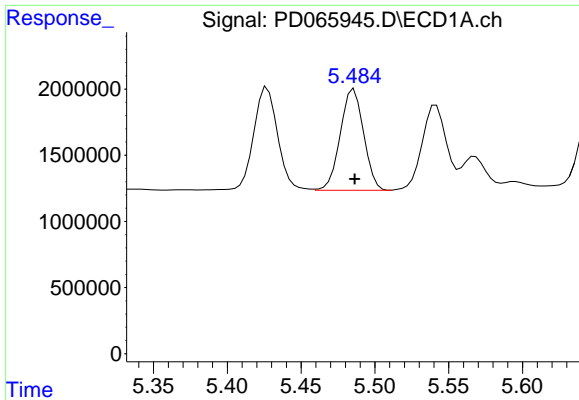
#10 gamma-Chlordane

R.T.: 5.427 min  
 Delta R.T.: 0.000 min  
 Response: 8866745  
 Conc: 7.34 ng/ml



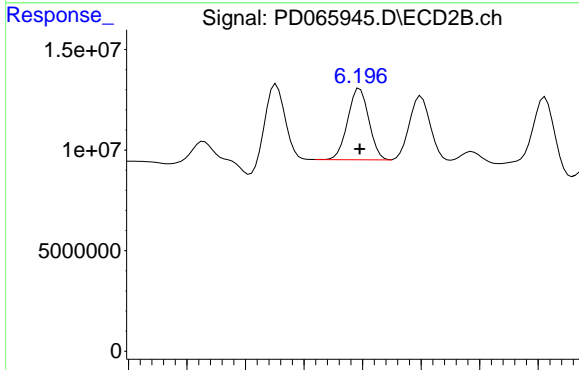
#10 gamma-Chlordane

R.T.: 6.126 min  
 Delta R.T.: 0.000 min  
 Response: 37044107  
 Conc: 6.18 ng/ml

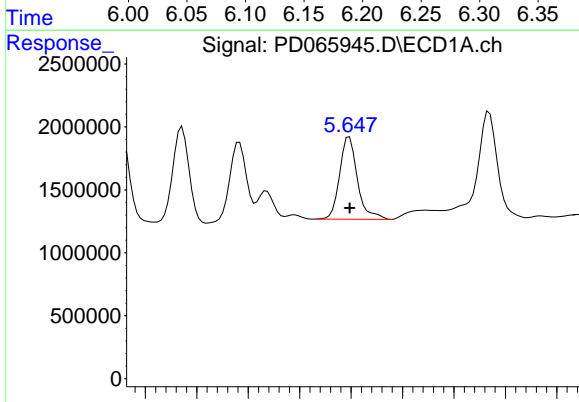


#11 alpha-Chlordane  
 R.T.: 5.486 min  
 Delta R.T.: 0.000 min  
 Response: 8426102  
 Conc: 7.12 ng/ml

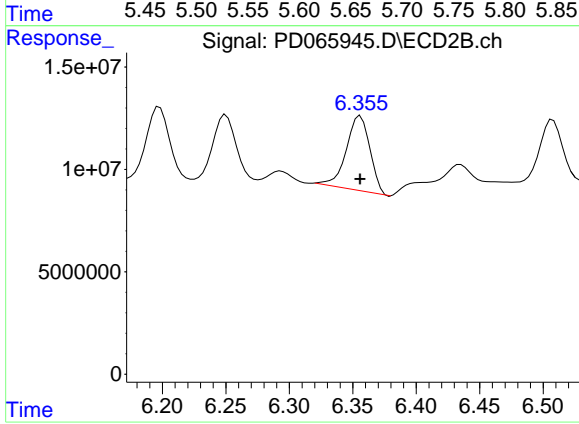
Instrument :  
 ECD\_D  
 ClientSampleId :  
 PL-05-092421MS



#11 alpha-Chlordane  
 R.T.: 6.198 min  
 Delta R.T.: 0.000 min  
 Response: 44634782  
 Conc: 7.44 ng/ml

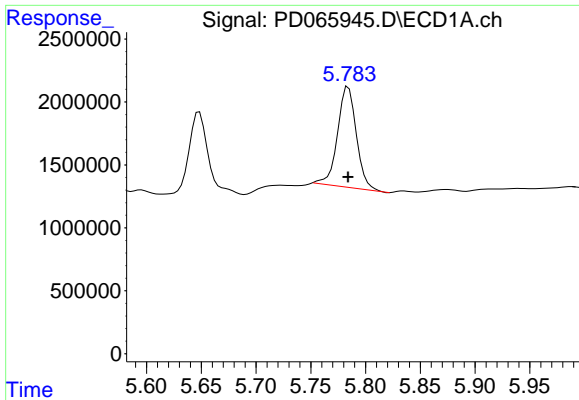


#12 4,4'-DDE  
 R.T.: 5.648 min  
 Delta R.T.: 0.000 min  
 Response: 7859773  
 Conc: 7.22 ng/ml



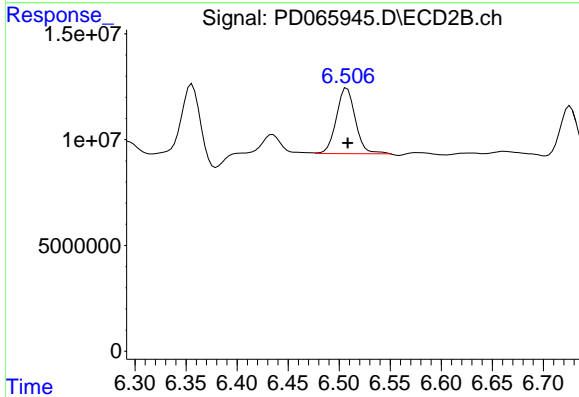
#12 4,4'-DDE  
 R.T.: 6.356 min  
 Delta R.T.: 0.000 min  
 Response: 47411967  
 Conc: 8.22 ng/ml



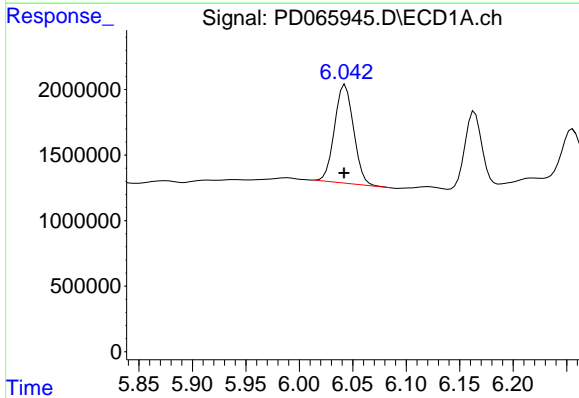


#13 Dieldrin  
 R.T.: 5.784 min  
 Delta R.T.: 0.000 min  
 Response: 9579566  
 Conc: 8.27 ng/ml

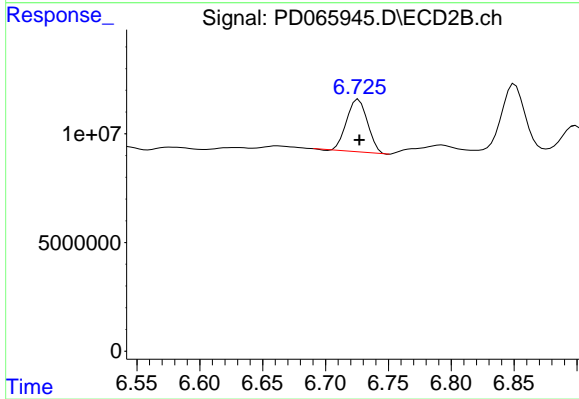
Instrument :  
 ECD\_D  
 ClientSampleId :  
 PL-05-092421MS



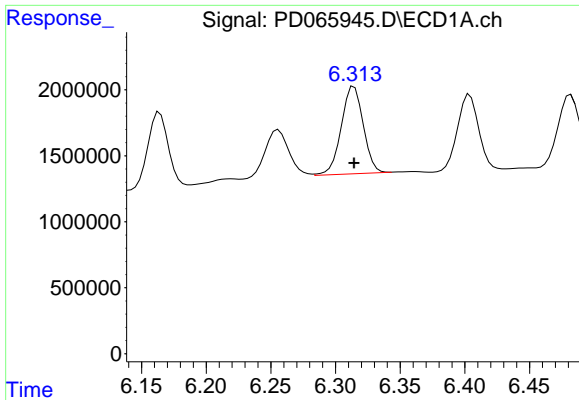
#13 Dieldrin  
 R.T.: 6.508 min  
 Delta R.T.: 0.000 min  
 Response: 40162102  
 Conc: 6.82 ng/ml



#14 Endrin  
 R.T.: 6.043 min  
 Delta R.T.: 0.001 min  
 Response: 9278693  
 Conc: 8.77 ng/ml



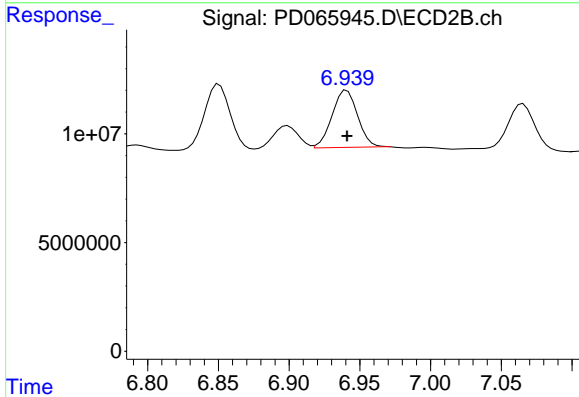
#14 Endrin  
 R.T.: 6.726 min  
 Delta R.T.: 0.000 min  
 Response: 27912154  
 Conc: 5.66 ng/ml



#15 Endosulfan II

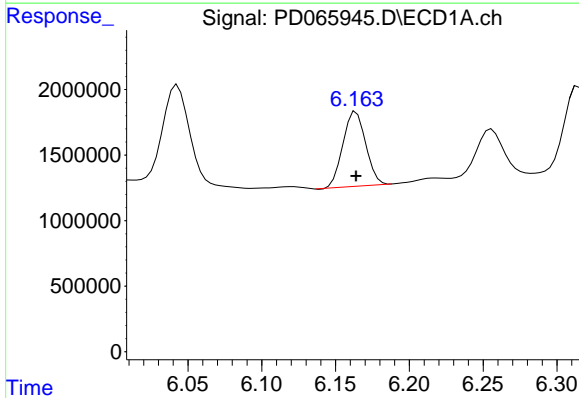
R.T.: 6.314 min  
 Delta R.T.: 0.000 min  
 Response: 7806632  
 Conc: 7.23 ng/ml

Instrument :  
 ECD\_D  
 ClientSampleId :  
 PL-05-092421MS



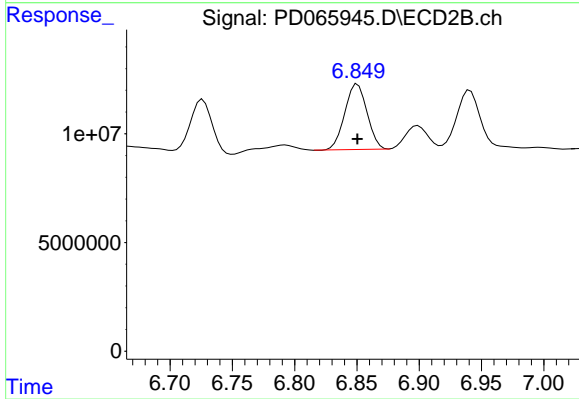
#15 Endosulfan II

R.T.: 6.941 min  
 Delta R.T.: 0.000 min  
 Response: 33176781  
 Conc: 6.85 ng/ml



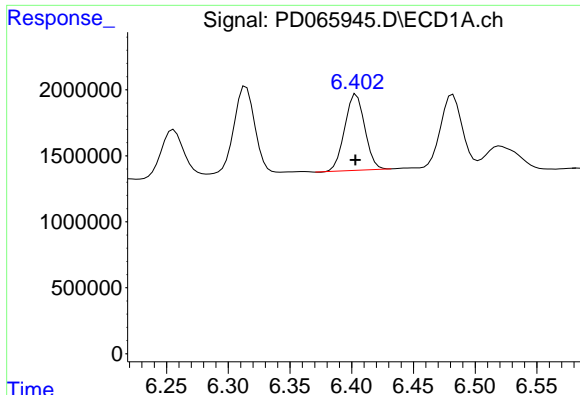
#16 4,4'-DDD

R.T.: 6.164 min  
 Delta R.T.: 0.000 min  
 Response: 6099574  
 Conc: 6.22 ng/ml



#16 4,4'-DDD

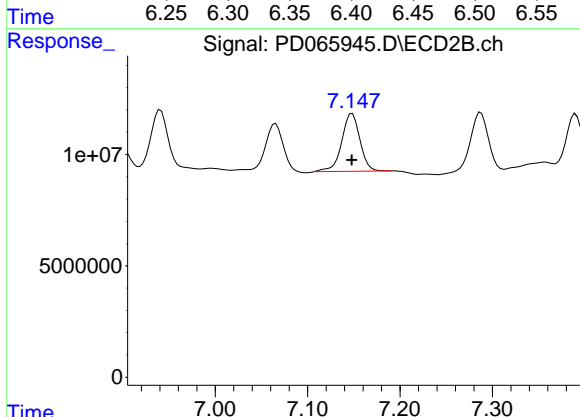
R.T.: 6.850 min  
 Delta R.T.: 0.000 min  
 Response: 37483437  
 Conc: 7.63 ng/ml



#17 4,4'-DDT

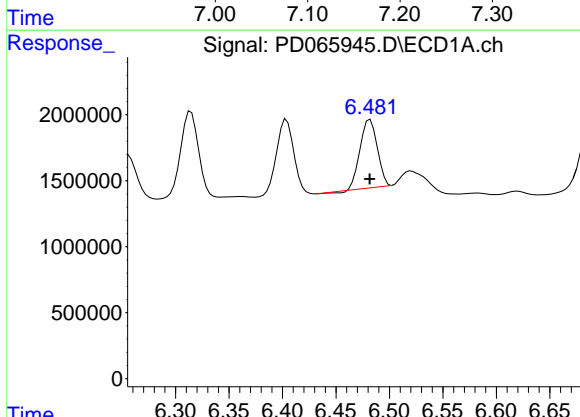
R.T.: 6.404 min  
 Delta R.T.: 0.000 min  
 Response: 6518063  
 Conc: 5.92 ng/ml

Instrument :  
 ECD\_D  
 ClientSampleId :  
 PL-05-092421MS



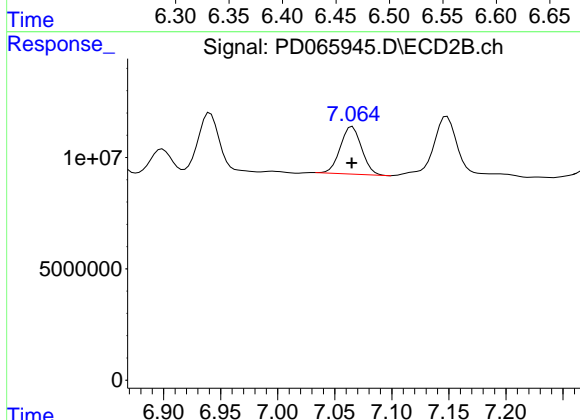
#17 4,4'-DDT

R.T.: 7.148 min  
 Delta R.T.: 0.000 min  
 Response: 35692115  
 Conc: 7.07 ng/ml



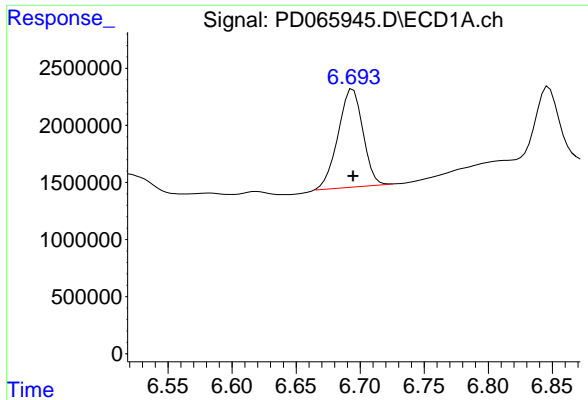
#18 Endrin aldehyde

R.T.: 6.482 min  
 Delta R.T.: 0.000 min  
 Response: 5726371  
 Conc: 6.46 ng/ml



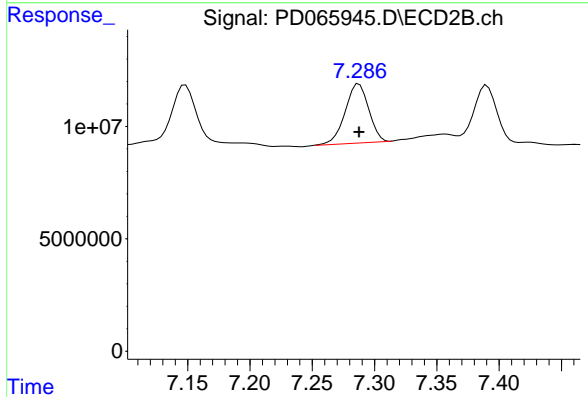
#18 Endrin aldehyde

R.T.: 7.065 min  
 Delta R.T.: 0.000 min  
 Response: 27806152  
 Conc: 7.10 ng/ml

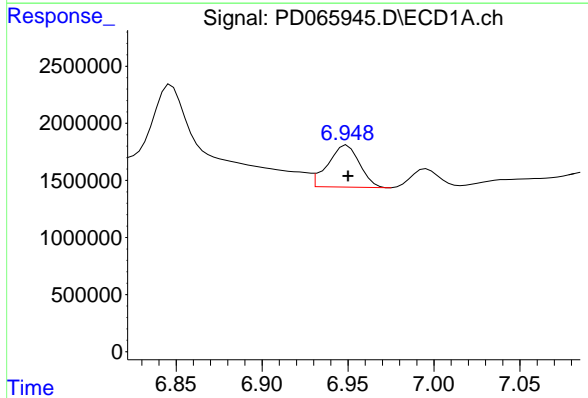


#19 Endosulfan Sulfate  
 R.T.: 6.694 min  
 Delta R.T.: 0.000 min  
 Response: 11541055  
 Conc: 10.11 ng/ml

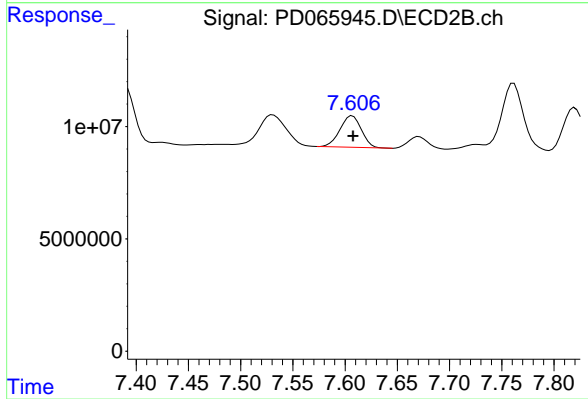
Instrument :  
 ECD\_D  
 ClientSampleId :  
 PL-05-092421MS



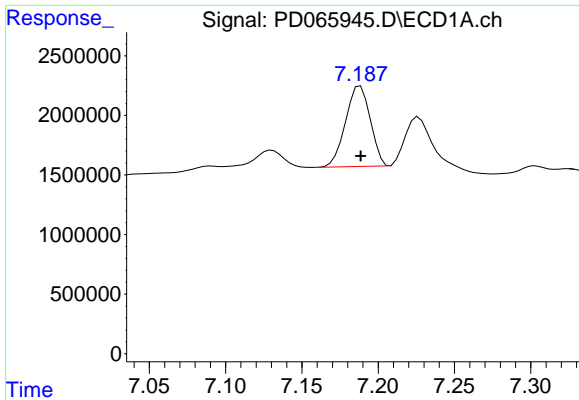
#19 Endosulfan Sulfate  
 R.T.: 7.287 min  
 Delta R.T.: 0.000 min  
 Response: 34816512  
 Conc: 7.06 ng/ml



#20 Methoxychlor  
 R.T.: 6.949 min  
 Delta R.T.: 0.000 min  
 Response: 4698433  
 Conc: 6.88 ng/ml

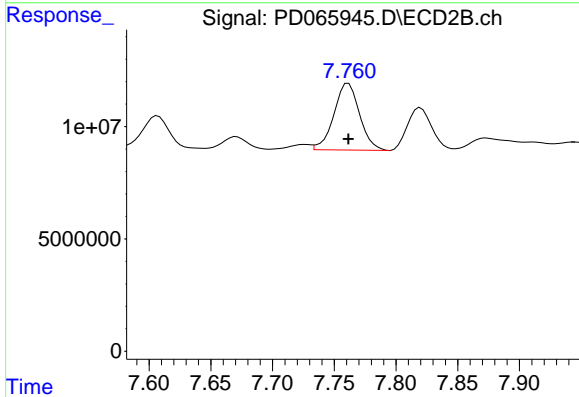


#20 Methoxychlor  
 R.T.: 7.607 min  
 Delta R.T.: 0.000 min  
 Response: 19994190  
 Conc: 7.60 ng/ml

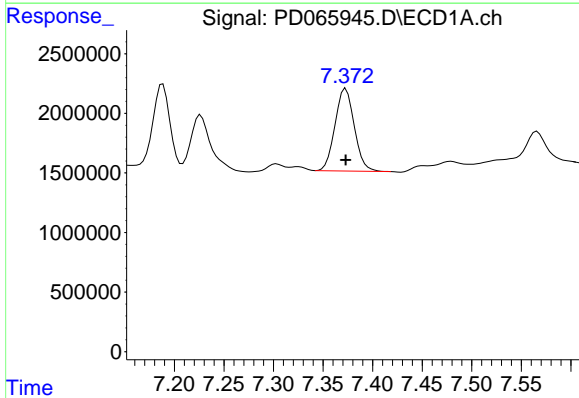


#21 Endrin ketone  
 R.T.: 7.188 min  
 Delta R.T.: 0.000 min  
 Response: 7600423  
 Conc: 5.40 ng/ml

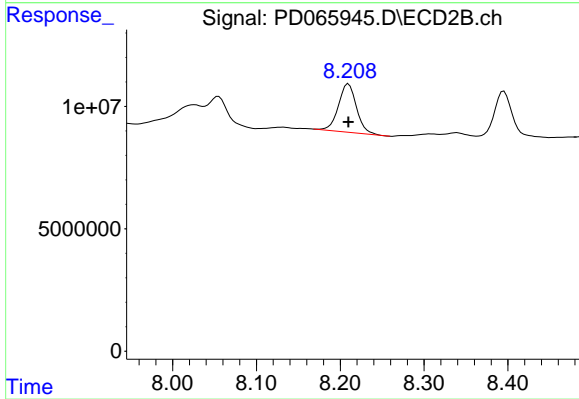
Instrument :  
 ECD\_D  
 ClientSampleId :  
 PL-05-092421MS



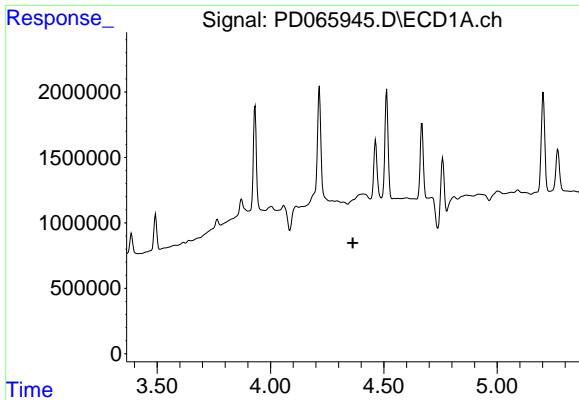
#21 Endrin ketone  
 R.T.: 7.761 min  
 Delta R.T.: 0.000 min  
 Response: 43016495  
 Conc: 7.54 ng/ml



#22 Mirex  
 R.T.: 7.373 min  
 Delta R.T.: 0.000 min  
 Response: 9340370  
 Conc: 7.74 ng/ml



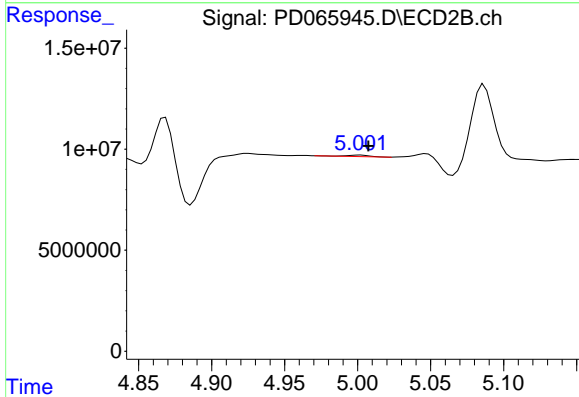
#22 Mirex  
 R.T.: 8.210 min  
 Delta R.T.: 0.000 min  
 Response: 29352814  
 Conc: 7.43 ng/ml



#23 Chlordane-1

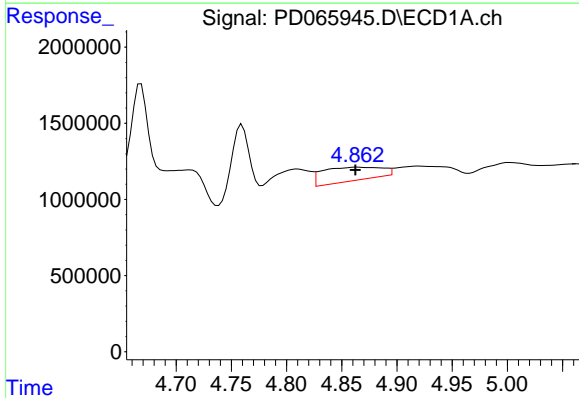
R.T.: 0.000 min  
 Exp R.T.: 4.363 min  
 Response: 0  
 Conc: N.D.

Instrument :  
 ECD\_D  
 ClientSampleId :  
 PL-05-092421MS



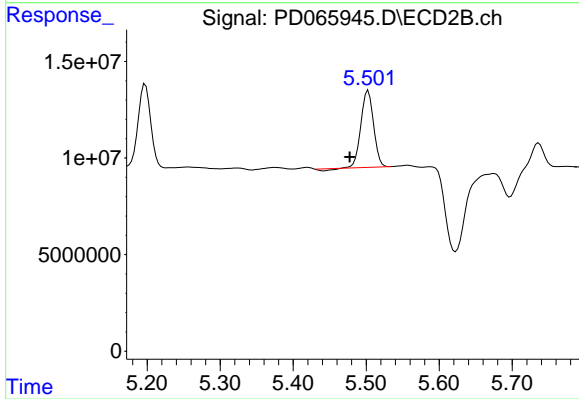
#23 Chlordane-1

R.T.: 5.002 min  
 Delta R.T.: -0.005 min  
 Response: 784032  
 Conc: 3.54 ng/ml



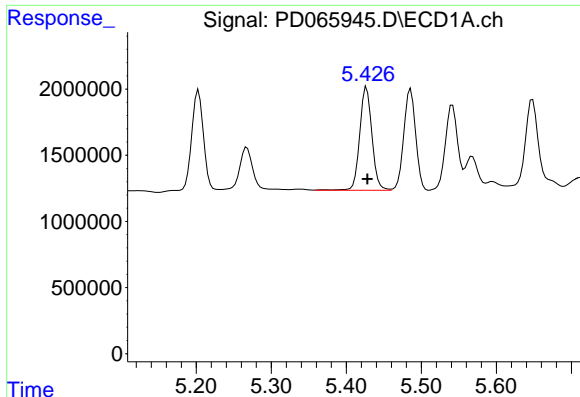
#24 Chlordane-2

R.T.: 4.864 min  
 Delta R.T.: 0.001 min  
 Response: 3303454  
 Conc: 81.34 ng/ml



#24 Chlordane-2

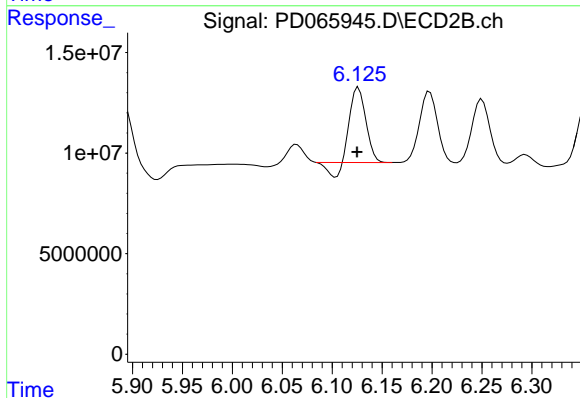
R.T.: 5.503 min  
 Delta R.T.: 0.025 min  
 Response: 47307775  
 Conc: 204.52 ng/ml



#25 Chlordane-3

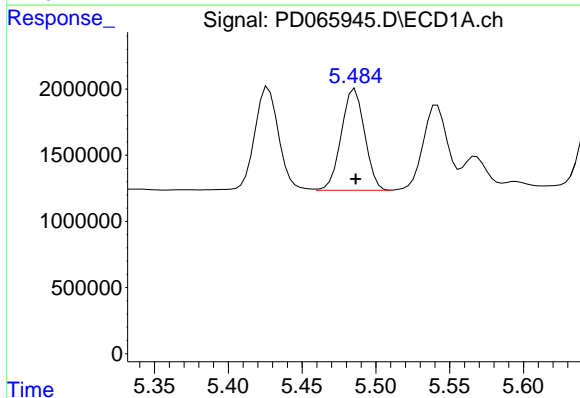
R.T.: 5.427 min  
 Delta R.T.: -0.001 min  
 Response: 8866745  
 Conc: 75.26 ng/ml

Instrument :  
 ECD\_D  
 ClientSampleId :  
 PL-05-092421MS



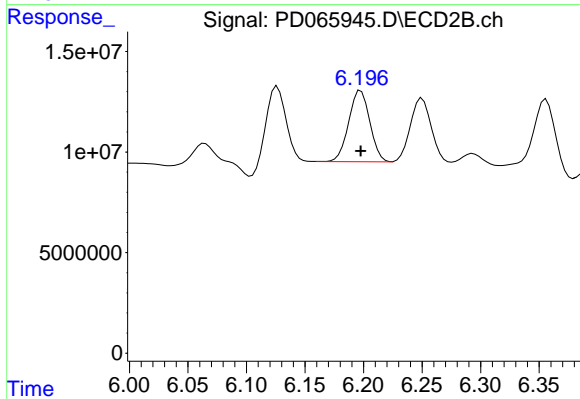
#25 Chlordane-3

R.T.: 6.126 min  
 Delta R.T.: 0.001 min  
 Response: 37044107  
 Conc: 45.17 ng/ml



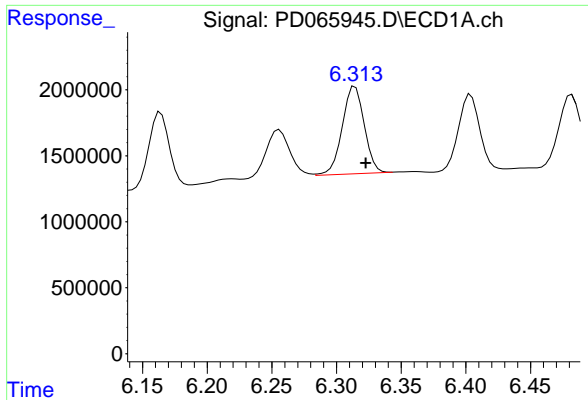
#26 Chlordane-4

R.T.: 5.486 min  
 Delta R.T.: 0.000 min  
 Response: 8426102  
 Conc: 85.32 ng/ml



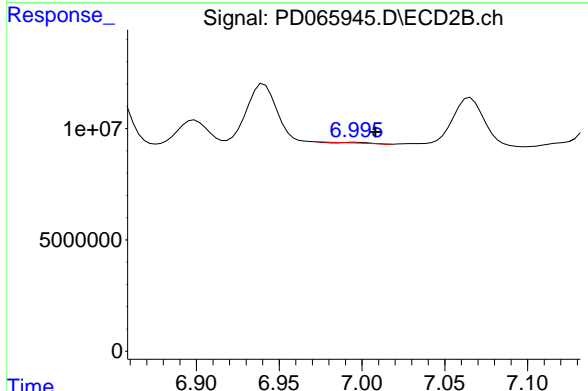
#26 Chlordane-4

R.T.: 6.198 min  
 Delta R.T.: 0.000 min  
 Response: 44634782  
 Conc: 46.54 ng/ml

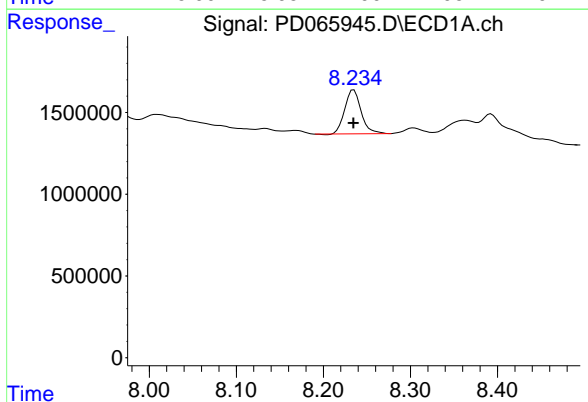


#27 Chlordane-5  
 R.T.: 6.314 min  
 Delta R.T.: -0.008 min  
 Response: 7806632  
 Conc: 160.63 ng/ml

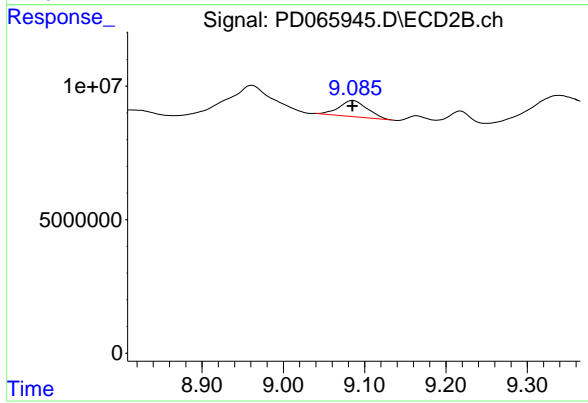
Instrument :  
 ECD\_D  
 ClientSampleId :  
 PL-05-092421MS



#27 Chlordane-5  
 R.T.: 6.996 min  
 Delta R.T.: -0.012 min  
 Response: 74669  
 Conc: 0.40 ng/ml



#28 Decachlorobiphenyl  
 R.T.: 8.235 min  
 Delta R.T.: 0.000 min  
 Response: 3508328  
 Conc: 2.57 ng/ml



#28 Decachlorobiphenyl  
 R.T.: 9.086 min  
 Delta R.T.: 0.000 min  
 Response: 14283034  
 Conc: 3.69 ng/ml