

Data Path : Z:\pestpcbsrv\HPCHEM1\ECD_D\Data\PD092821\
 Data File : PD065948.D
 Signal(s) : Signal #1: ECD1A.ch Signal #2: ECD2B.ch
 Acq On : 28 Sep 2021 13:26
 Operator : AR\AJ
 Sample : M3956-01
 Misc :
 ALS Vial : 13 Sample Multiplier: 1

Instrument :
 ECD_D
 ClientSampleId :
 LITTLE-FALLS-TROPHY-SINK-HOL

Integration File signal 1: autoint1.e
 Integration File signal 2: autoint2.e
 Quant Time: Sep 28 16:20:49 2021
 Quant Method : Z:\pestpcbsrv\HPCHEM1\ECD_D\Method\PD092221.M
 Quant Title : GC Extractables
 QLast Update : Thu Sep 23 12:18:33 2021
 Response via : Initial Calibration
 Integrator: ChemStation

Volume Inj. : 2 µl
 Signal #1 Phase : ZB-MR2 Signal #2 Phase: ZB-MR1
 Signal #1 Info : 30M x 0.32mm x0.2 Signal #2 Info : 30M x 0.32mm x 0.50µm

Compound	RT#1	RT#2	Resp#1	Resp#2	ng/ml	ng/ml

System Monitoring Compounds						
1) SA Tetrachlo...	3.493	4.012	20069538	149.7E6	27.101	26.070
28) SA Decachlor...	8.235	9.086	24455398	79268036	17.904	20.482
Target Compounds						
2) A alpha-BHC	3.943	4.412	1256273	5873396	1.119	0.699 #
3) MA gamma-BHC...	4.218	0.000	251330	0	0.224	N.D. #
4) MA Heptachlor	4.544f	0.000	81787	0	0.069	N.D. #
5) MB Aldrin	4.765	5.488	46990	874524	0.042	0.130 #
6) B beta-BHC	4.474	4.876	238060	-519906	0.417	N.D. #
8) B Heptachlo...	5.169f	5.876f	22450	286634	0.020	0.055 #
9) A Endosulfan I	5.568f	6.259	109480	433493	0.101	0.078
10) B gamma-Chl...	5.460f	6.126	82115	155709	0.068	0.026 #
11) B alpha-Chl...	5.483	6.195	71683	248133	0.061	0.041 #
12) B 4,4'-DDE	5.650	6.356	94898	915051	0.087	0.159 #
13) MA Dieldrin	0.000	6.504	0	411512	N.D.	0.070 #
15) B Endosulfa...	6.322	6.943	295834	270642	0.274	0.056 #
17) MA 4,4'-DDT	6.404	7.154	245164	339291	0.223	0.067 #
19) B Endosulfa...	0.000	7.305f	0	62884	N.D.	0.013 #
20) A Methoxychlor	0.000	7.617	0	372100	N.D.	0.141 #
21) B Endrin ke...	0.000	7.765	0	60532	N.D.	0.011 #
22) Mirex	0.000	8.184f	0	59453	N.D.	0.015 #
23) Chlordane-1	4.392f	5.011	2011528	-199973	60.051	N.D. #
24) Chlordane-2	0.000	5.488	0	874524	N.D.	3.781 #
25) Chlordane-3	0.000	6.126	0	155709	N.D.	0.190 #
26) Chlordane-4	5.483	6.195	71683	248133	0.726	0.259 #
27) Chlordane-5	6.322	0.000	295834	0	6.087	N.D. #

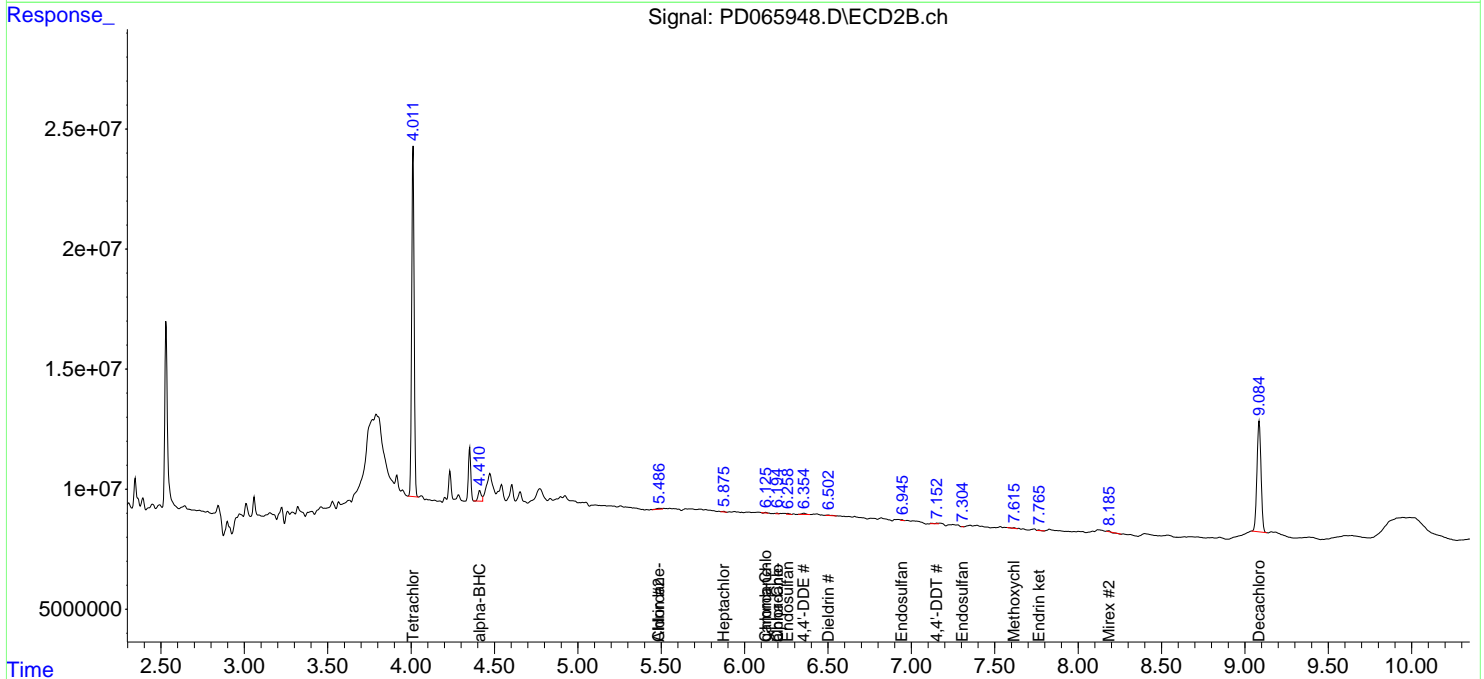
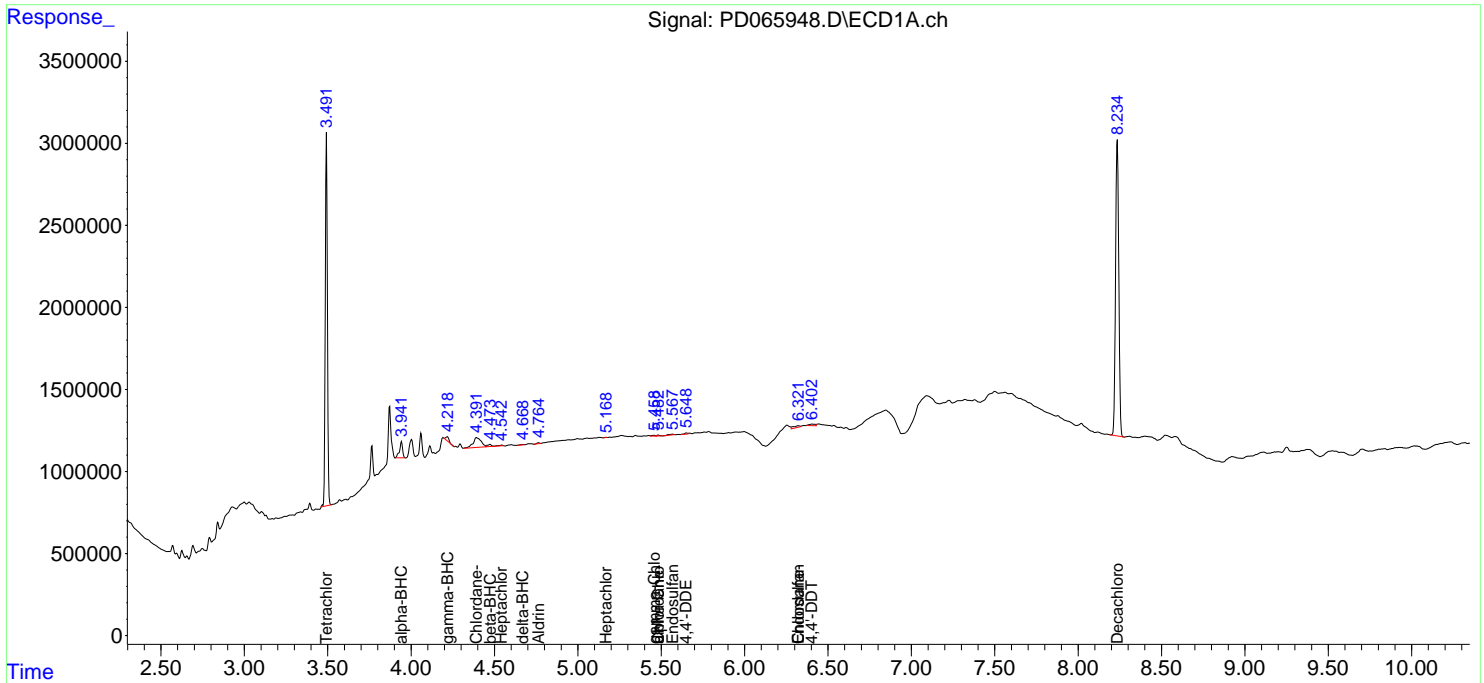
(f)=RT Delta > 1/2 Window (#)=Amounts differ by > 25% (m)=manual int.

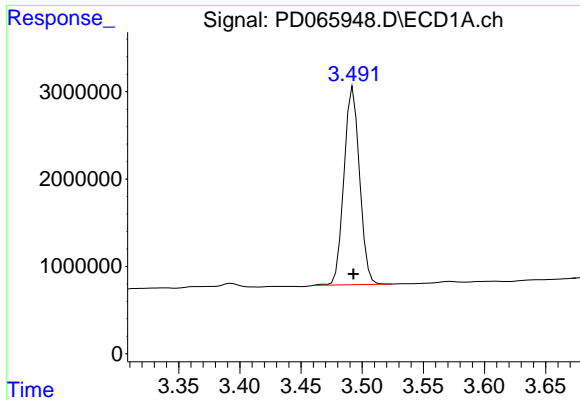
Data Path : Z:\pestpcbsrv\HPCHEM1\ECD_D\Data\PD092821\
 Data File : PD065948.D
 Signal(s) : Signal #1: ECD1A.ch Signal #2: ECD2B.ch
 Acq On : 28 Sep 2021 13:26
 Operator : AR\AJ
 Sample : M3956-01
 Misc :
 ALS Vial : 13 Sample Multiplier: 1

Instrument :
 ECD_D
 ClientSampleID :
 LITTLE-FALLS-TROPHY-SINK-HOL

Integration File signal 1: autoint1.e
 Integration File signal 2: autoint2.e
 Quant Time: Sep 28 16:20:49 2021
 Quant Method : Z:\pestpcbsrv\HPCHEM1\ECD_D\Method\PD092221.M
 Quant Title : GC Extractables
 QLast Update : Thu Sep 23 12:18:33 2021
 Response via : Initial Calibration
 Integrator: ChemStation

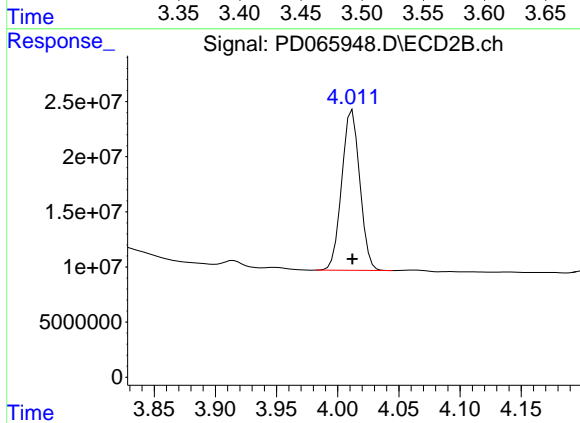
Volume Inj. : 2 µl
 Signal #1 Phase : ZB-MR2 Signal #2 Phase: ZB-MR1
 Signal #1 Info : 30M x 0.32mm x0.2 Signal #2 Info : 30M x 0.32mm x 0.50µm



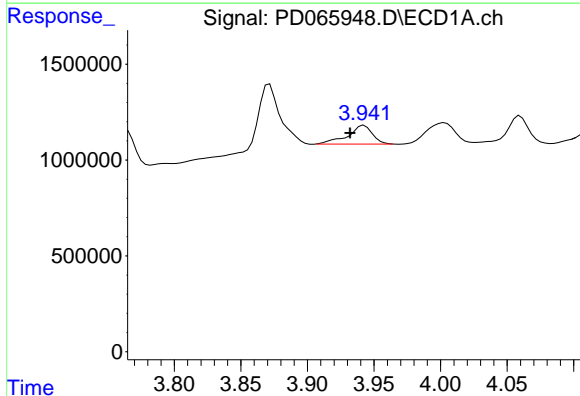


#1 Tetrachloro-m-xylene
 R.T.: 3.493 min
 Delta R.T.: 0.000 min
 Response: 20069538
 Conc: 27.10 ng/ml

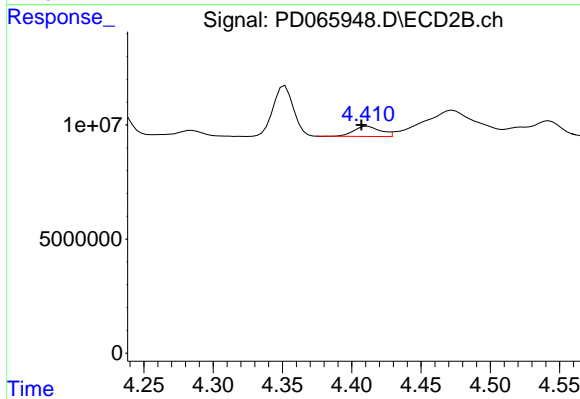
Instrument :
 ECD_D
 ClientSampleId :
 LITTLE-FALLS-TROPHY-SINK-HOL



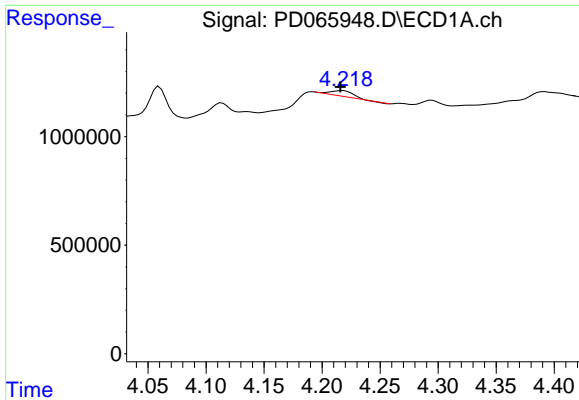
#1 Tetrachloro-m-xylene
 R.T.: 4.012 min
 Delta R.T.: 0.000 min
 Response: 149697425
 Conc: 26.07 ng/ml



#2 alpha-BHC
 R.T.: 3.943 min
 Delta R.T.: 0.011 min
 Response: 1256273
 Conc: 1.12 ng/ml

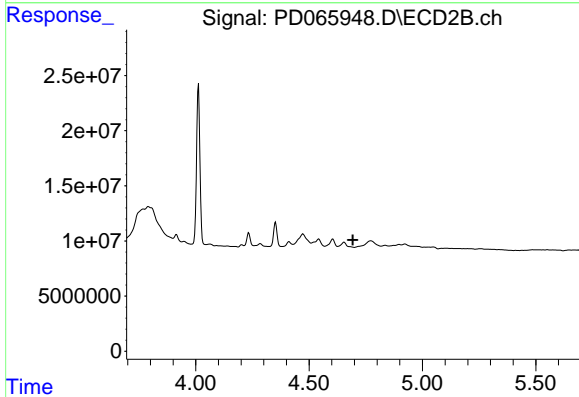


#2 alpha-BHC
 R.T.: 4.412 min
 Delta R.T.: 0.005 min
 Response: 5873396
 Conc: 0.70 ng/ml

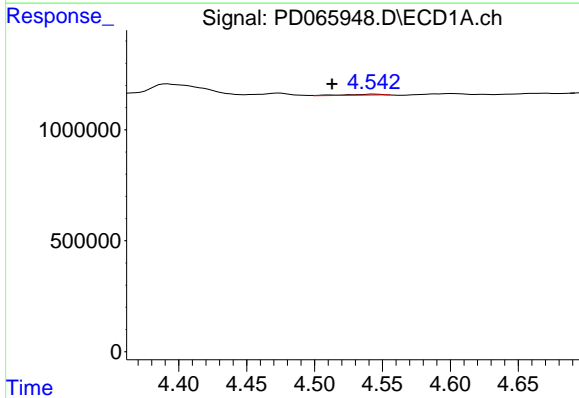


#3 gamma-BHC (Lindane)
 R.T.: 4.218 min
 Delta R.T.: 0.002 min
 Response: 251330
 Conc: 0.22 ng/ml

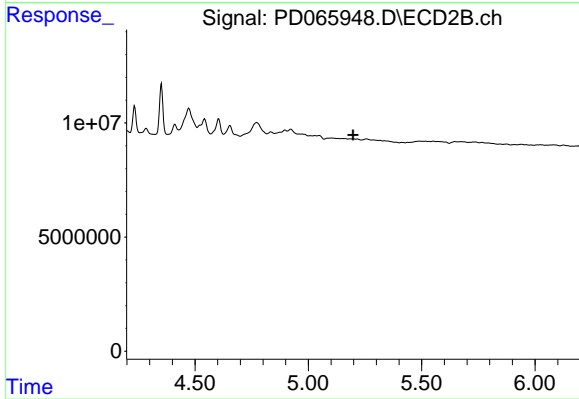
Instrument :
 ECD_D
 ClientSampleId :
 LITTLE-FALLS-TROPHY-SINK-HOL



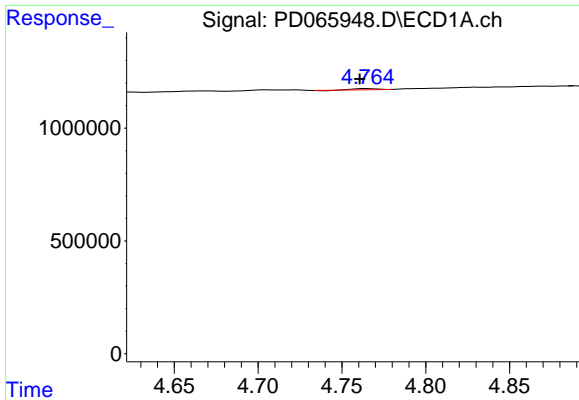
#3 gamma-BHC (Lindane)
 R.T.: 0.000 min
 Exp R.T. : 4.694 min
 Response: 0
 Conc: N.D.



#4 Heptachlor
 R.T.: 4.544 min
 Delta R.T.: 0.031 min
 Response: 81787
 Conc: 0.07 ng/ml

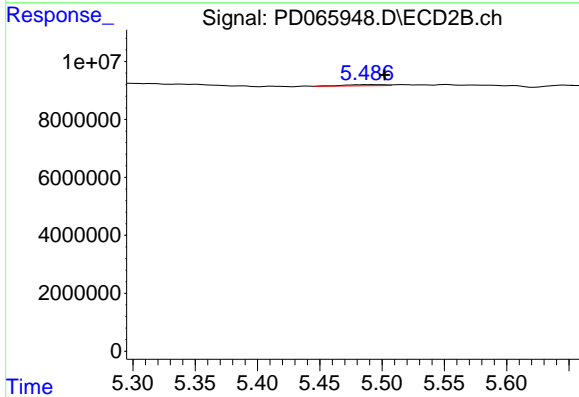


#4 Heptachlor
 R.T.: 0.000 min
 Exp R.T. : 5.197 min
 Response: 0
 Conc: N.D.

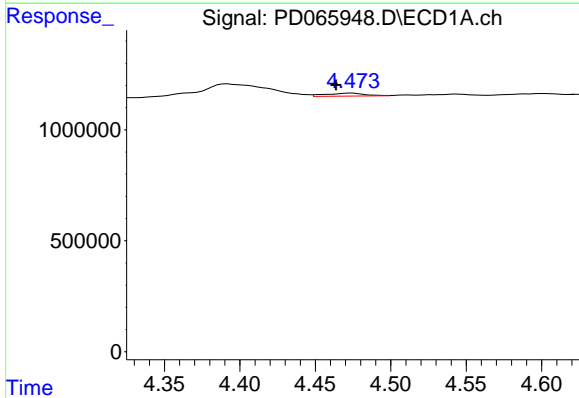


#5 Aldrin
 R.T.: 4.765 min
 Delta R.T.: 0.004 min
 Response: 46990
 Conc: 0.04 ng/ml

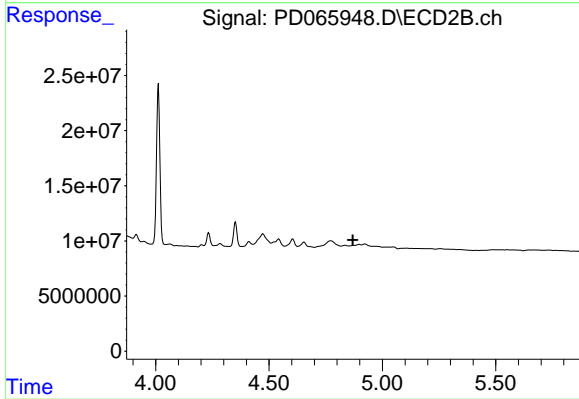
Instrument :
 ECD_D
ClientSampleId :
 LITTLE-FALLS-TROPHY-SINK-HOL



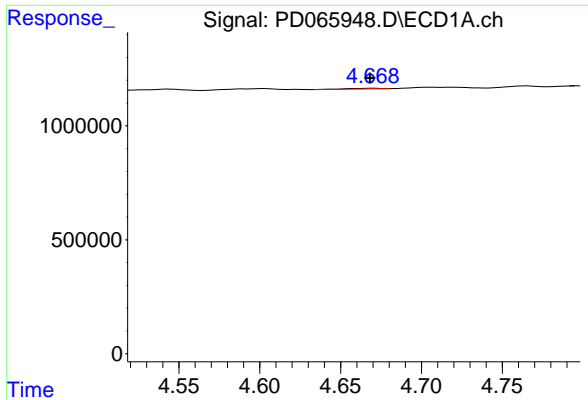
#5 Aldrin
 R.T.: 5.488 min
 Delta R.T.: -0.014 min
 Response: 874524
 Conc: 0.13 ng/ml



#6 beta-BHC
 R.T.: 4.474 min
 Delta R.T.: 0.010 min
 Response: 238060
 Conc: 0.42 ng/ml

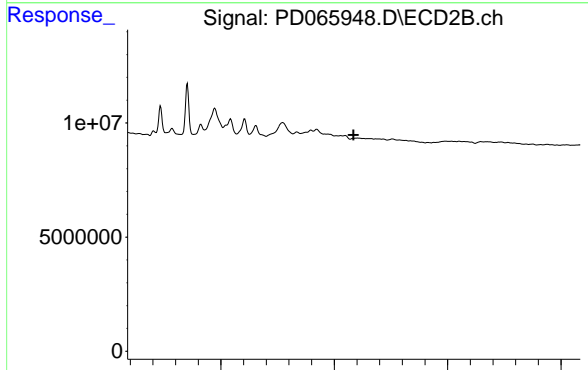


#6 beta-BHC
 R.T.: 4.876 min
 Delta R.T.: 0.006 min
 Response: -519906
 Conc: N.D.

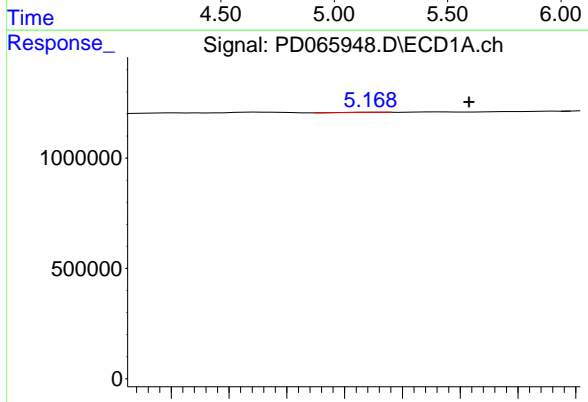


#7 delta-BHC
 R.T.: 4.671 min
 Delta R.T.: 0.002 min
 Response: 42117
 Conc: 0.04 ng/ml

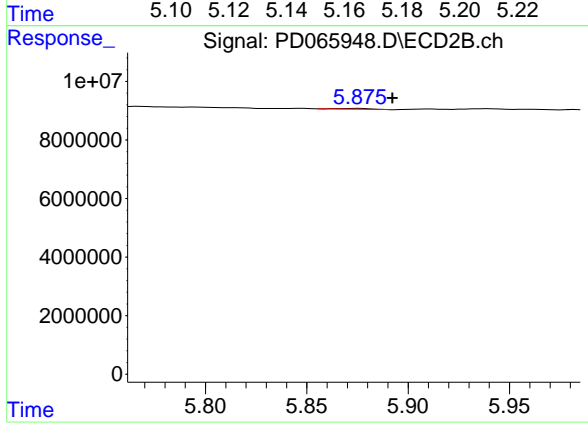
Instrument :
 ECD_D
 ClientSampleId :
 LITTLE-FALLS-TROPHY-SINK-HOL



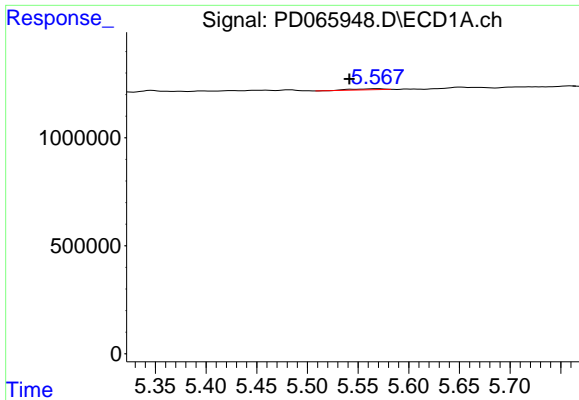
#7 delta-BHC
 R.T.: 5.104 min
 Delta R.T.: 0.019 min
 Response: -378623
 Conc: N.D.



#8 Heptachlor epoxide
 R.T.: 5.169 min
 Delta R.T.: -0.034 min
 Response: 22450
 Conc: 0.02 ng/ml

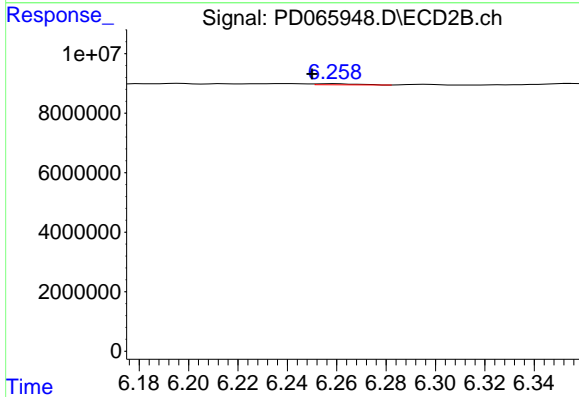


#8 Heptachlor epoxide
 R.T.: 5.876 min
 Delta R.T.: -0.016 min
 Response: 286634
 Conc: 0.06 ng/ml

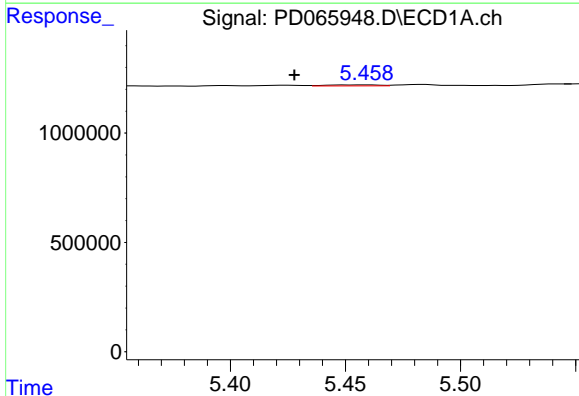


#9 Endosulfan I
 R.T.: 5.568 min
 Delta R.T.: 0.027 min
 Response: 109480
 Conc: 0.10 ng/ml

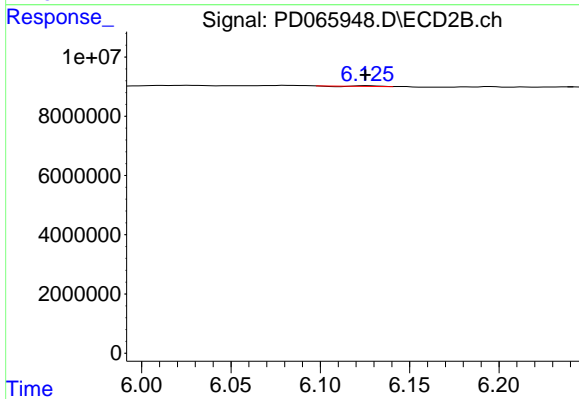
Instrument :
 ECD_D
 ClientSampleId :
 LITTLE-FALLS-TROPHY-SINK-HOL



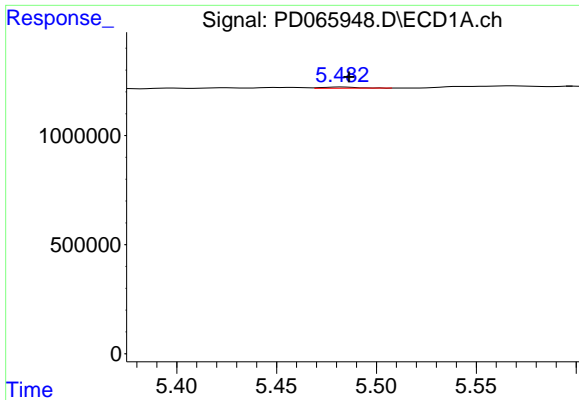
#9 Endosulfan I
 R.T.: 6.259 min
 Delta R.T.: 0.009 min
 Response: 433493
 Conc: 0.08 ng/ml



#10 gamma-Chlordane
 R.T.: 5.460 min
 Delta R.T.: 0.032 min
 Response: 82115
 Conc: 0.07 ng/ml

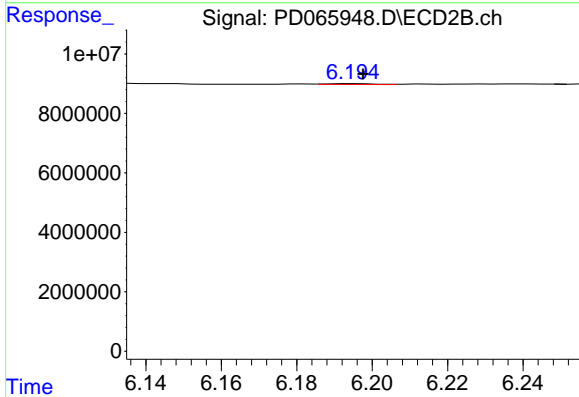


#10 gamma-Chlordane
 R.T.: 6.126 min
 Delta R.T.: 0.000 min
 Response: 155709
 Conc: 0.03 ng/ml

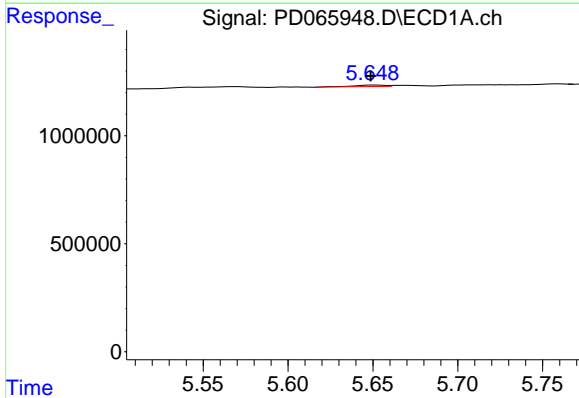


#11 alpha-Chlordane
 R.T.: 5.483 min
 Delta R.T.: -0.003 min
 Response: 71683
 Conc: 0.06 ng/ml

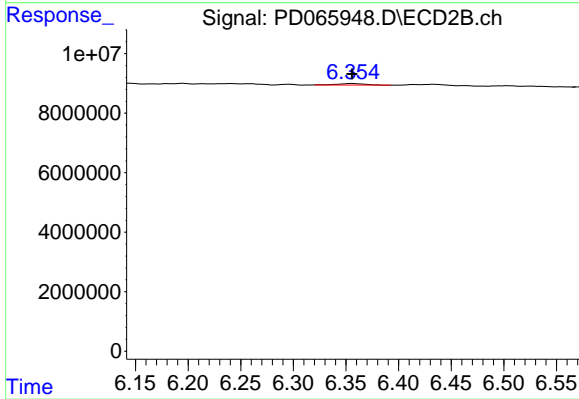
Instrument :
 ECD_D
 ClientSampleId :
 LITTLE-FALLS-TROPHY-SINK-HOL



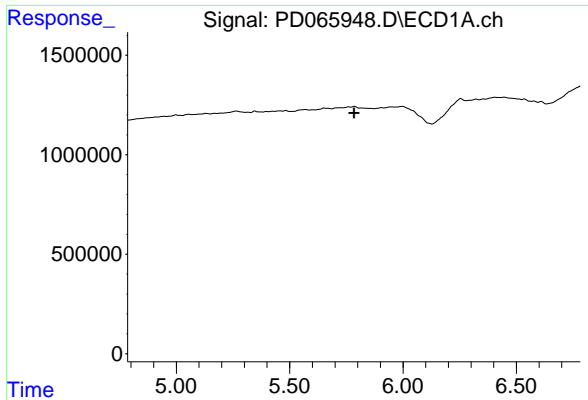
#11 alpha-Chlordane
 R.T.: 6.195 min
 Delta R.T.: -0.002 min
 Response: 248133
 Conc: 0.04 ng/ml



#12 4,4'-DDE
 R.T.: 5.650 min
 Delta R.T.: 0.002 min
 Response: 94898
 Conc: 0.09 ng/ml

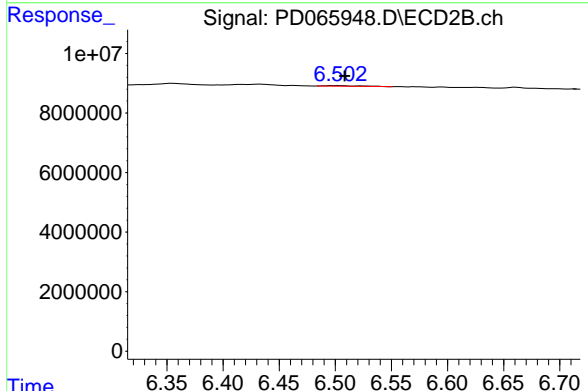


#12 4,4'-DDE
 R.T.: 6.356 min
 Delta R.T.: 0.000 min
 Response: 915051
 Conc: 0.16 ng/ml

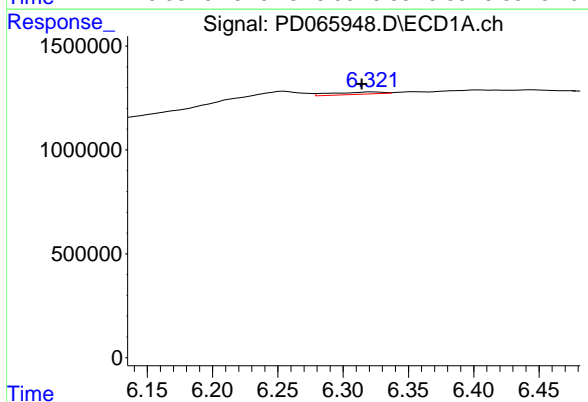


#13 Dieldrin
 R.T.: 0.000 min
 Exp R.T.: 5.784 min
 Response: 0
 Conc: N.D.

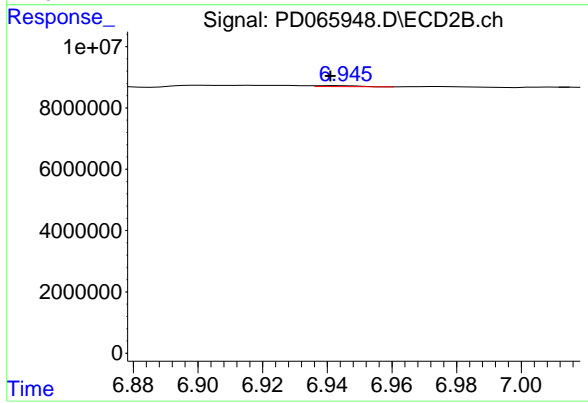
Instrument :
 ECD_D
 ClientSampleId :
 LITTLE-FALLS-TROPHY-SINK-HOL



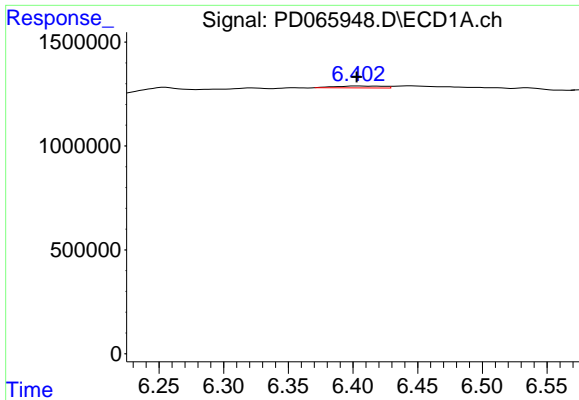
#13 Dieldrin
 R.T.: 6.504 min
 Delta R.T.: -0.004 min
 Response: 411512
 Conc: 0.07 ng/ml



#15 Endosulfan II
 R.T.: 6.322 min
 Delta R.T.: 0.008 min
 Response: 295834
 Conc: 0.27 ng/ml

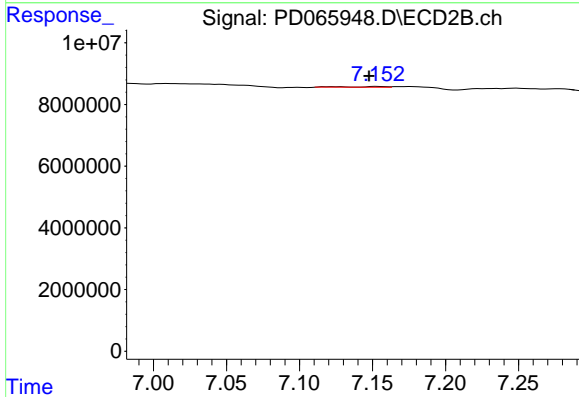


#15 Endosulfan II
 R.T.: 6.943 min
 Delta R.T.: 0.002 min
 Response: 270642
 Conc: 0.06 ng/ml

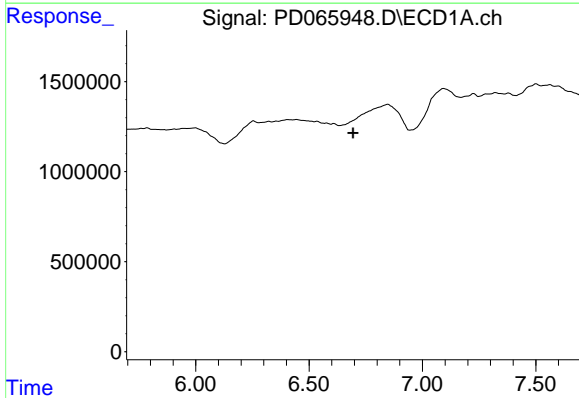


#17 4,4'-DDT
 R.T.: 6.404 min
 Delta R.T.: 0.000 min
 Response: 245164
 Conc: 0.22 ng/ml

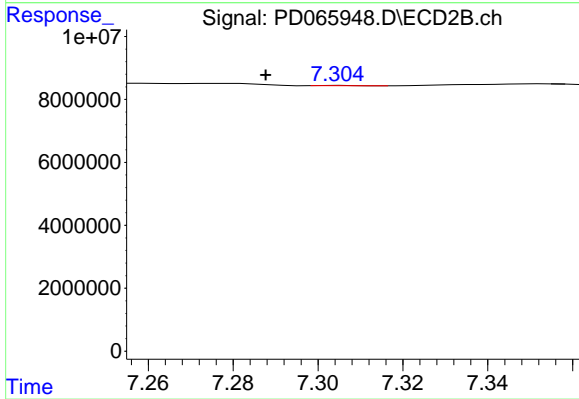
Instrument :
 ECD_D
ClientSampleId :
 LITTLE-FALLS-TROPHY-SINK-HOL



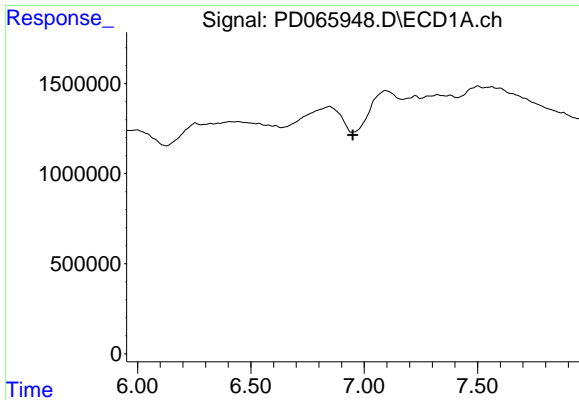
#17 4,4'-DDT
 R.T.: 7.154 min
 Delta R.T.: 0.006 min
 Response: 339291
 Conc: 0.07 ng/ml



#19 Endosulfan Sulfate
 R.T.: 0.000 min
 Exp R.T. : 6.694 min
 Response: 0
 Conc: N.D.



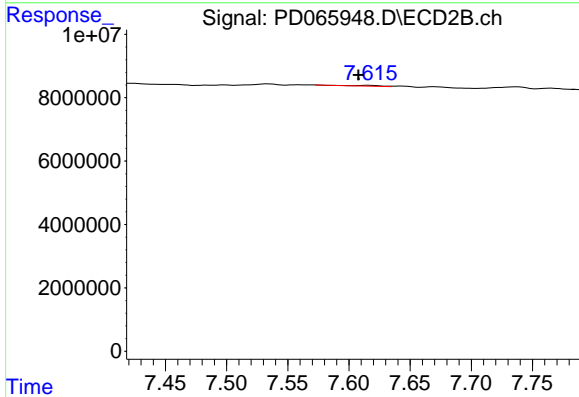
#19 Endosulfan Sulfate
 R.T.: 7.305 min
 Delta R.T.: 0.018 min
 Response: 62884
 Conc: 0.01 ng/ml



#20 Methoxychlor

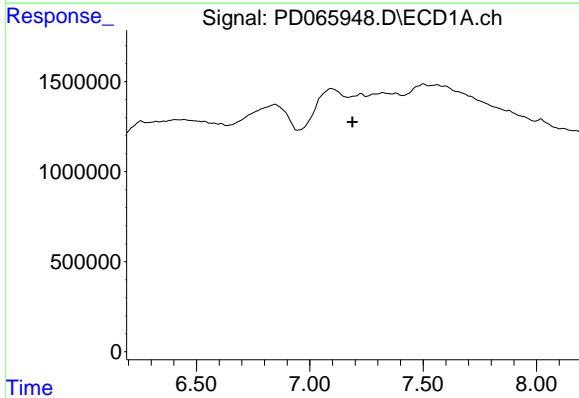
R.T.: 0.000 min
 Exp R.T. : 6.950 min
 Response: 0
 Conc: N.D.

Instrument :
 ECD_D
 ClientSampleId :
 LITTLE-FALLS-TROPHY-SINK-HOL



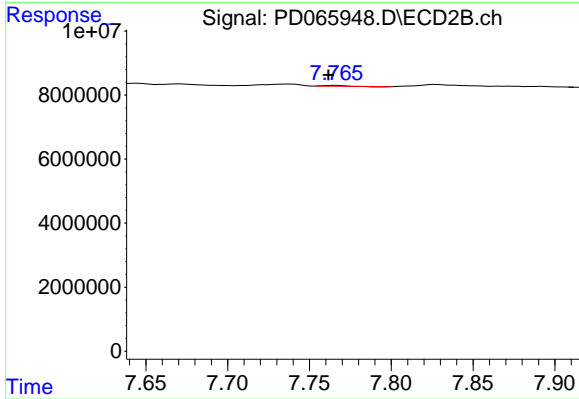
#20 Methoxychlor

R.T.: 7.617 min
 Delta R.T.: 0.009 min
 Response: 372100
 Conc: 0.14 ng/ml



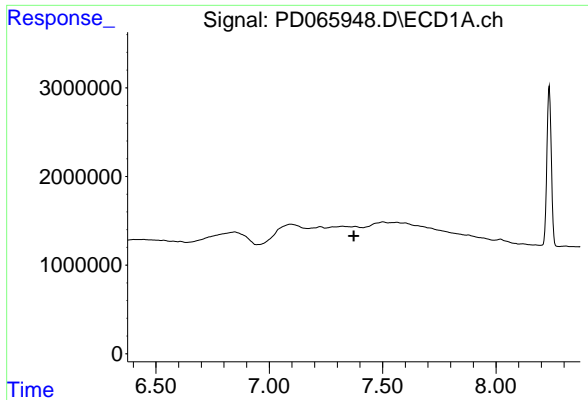
#21 Endrin ketone

R.T.: 0.000 min
 Exp R.T. : 7.189 min
 Response: 0
 Conc: N.D.



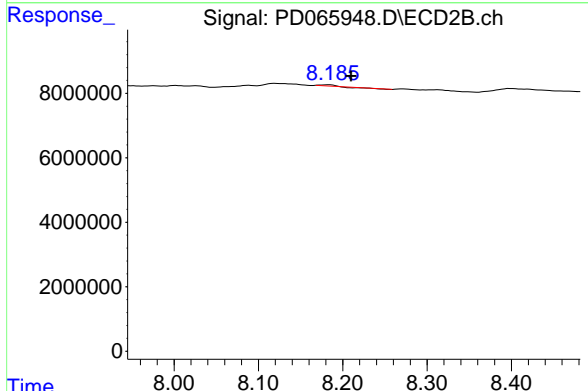
#21 Endrin ketone

R.T.: 7.765 min
 Delta R.T.: 0.004 min
 Response: 60532
 Conc: 0.01 ng/ml

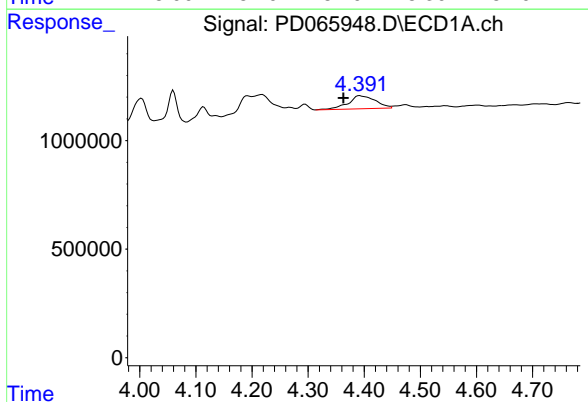


#22 Mirex
 R.T.: 0.000 min
 Exp R.T.: 7.373 min
 Response: 0
 Conc: N.D.

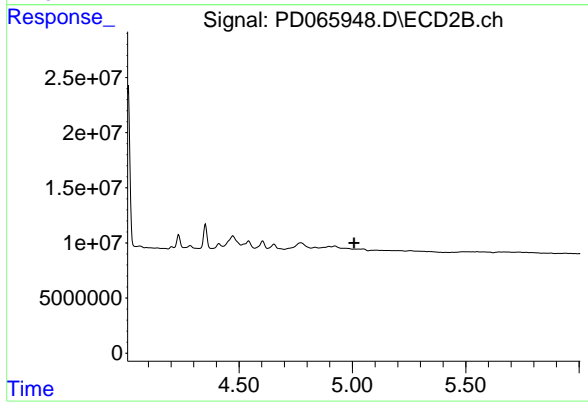
Instrument :
 ECD_D
 ClientSampleId :
 LITTLE-FALLS-TROPHY-SINK-HOL



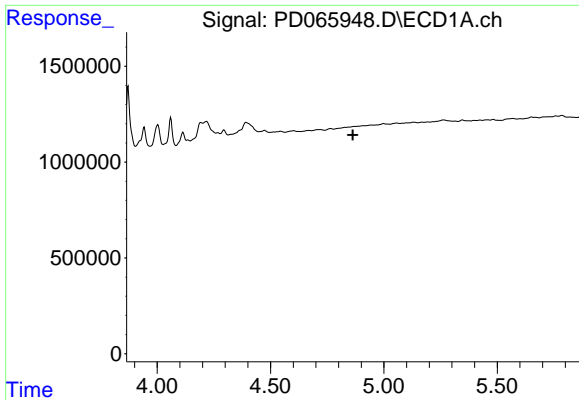
#22 Mirex
 R.T.: 8.184 min
 Delta R.T.: -0.026 min
 Response: 59453
 Conc: 0.02 ng/ml



#23 Chlordane-1
 R.T.: 4.392 min
 Delta R.T.: 0.029 min
 Response: 2011528
 Conc: 60.05 ng/ml

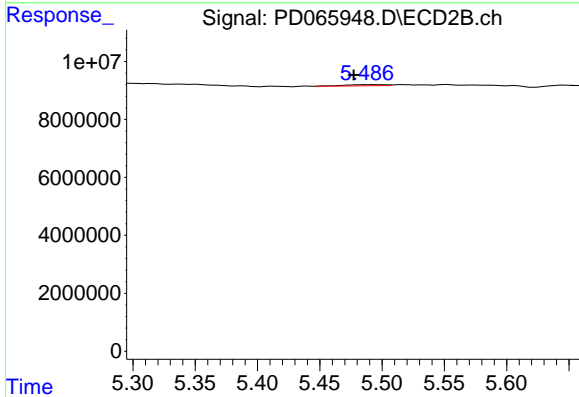


#23 Chlordane-1
 R.T.: 5.011 min
 Delta R.T.: 0.004 min
 Response: -199973
 Conc: N.D.

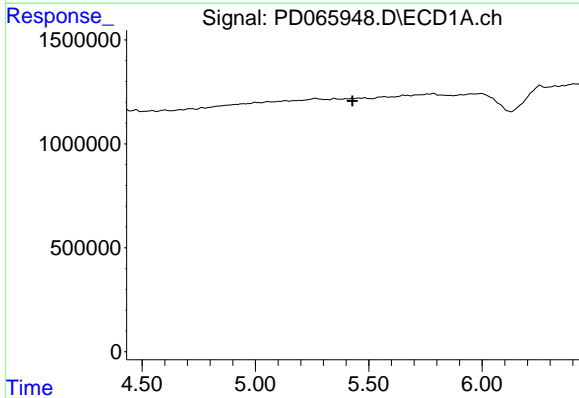


#24 Chlordane-2
 R.T.: 0.000 min
 Exp R.T. : 4.862 min
 Response: 0
 Conc: N.D.

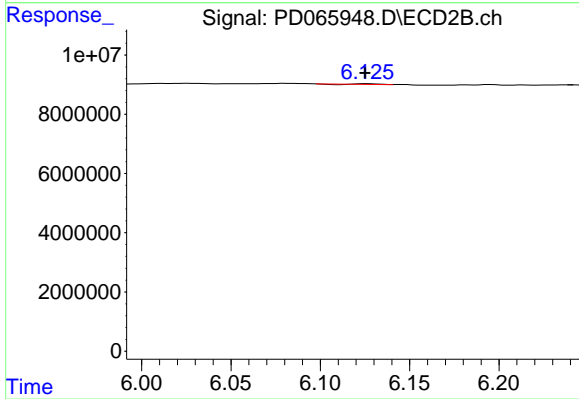
Instrument :
 ECD_D
 ClientSampleId :
 LITTLE-FALLS-TROPHY-SINK-HOL



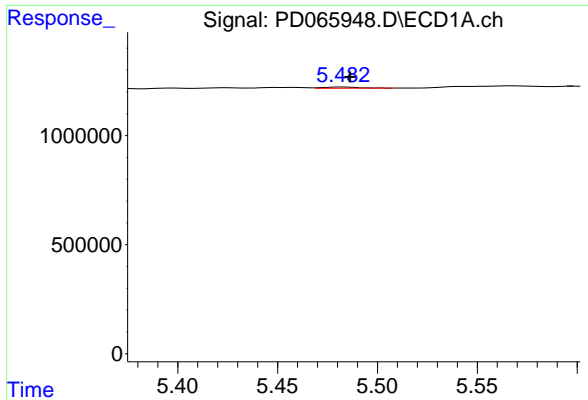
#24 Chlordane-2
 R.T.: 5.488 min
 Delta R.T.: 0.011 min
 Response: 874524
 Conc: 3.78 ng/ml



#25 Chlordane-3
 R.T.: 0.000 min
 Exp R.T. : 5.428 min
 Response: 0
 Conc: N.D.

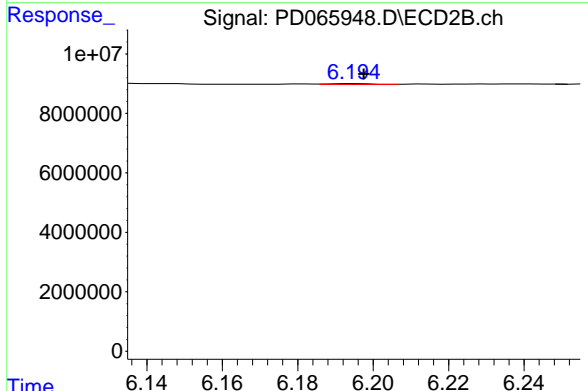


#25 Chlordane-3
 R.T.: 6.126 min
 Delta R.T.: 0.001 min
 Response: 155709
 Conc: 0.19 ng/ml

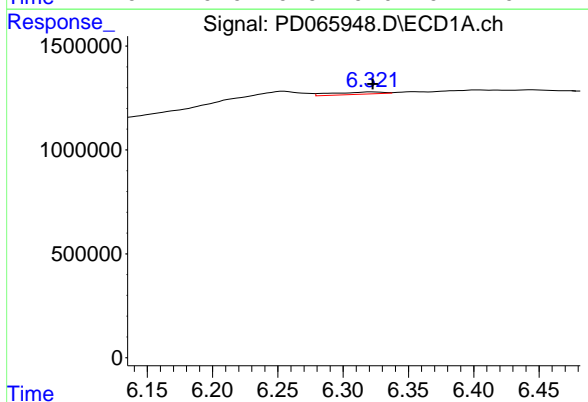


#26 Chlordane-4
 R.T.: 5.483 min
 Delta R.T.: -0.003 min
 Response: 71683
 Conc: 0.73 ng/ml

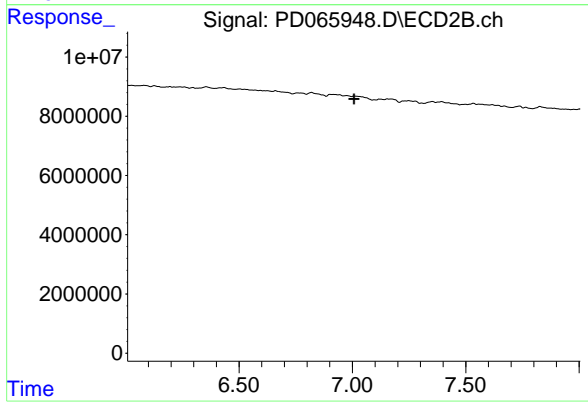
Instrument :
 ECD_D
ClientSampleId :
 LITTLE-FALLS-TROPHY-SINK-HOL



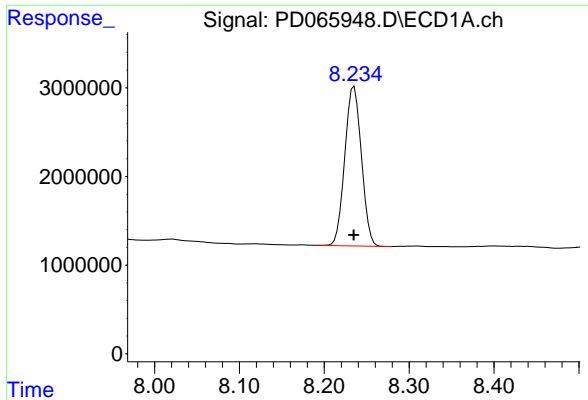
#26 Chlordane-4
 R.T.: 6.195 min
 Delta R.T.: -0.002 min
 Response: 248133
 Conc: 0.26 ng/ml



#27 Chlordane-5
 R.T.: 6.322 min
 Delta R.T.: 0.000 min
 Response: 295834
 Conc: 6.09 ng/ml



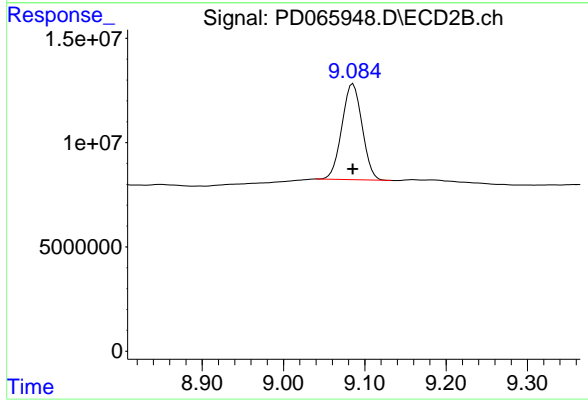
#27 Chlordane-5
 R.T.: 0.000 min
 Exp R.T. : 7.008 min
 Response: 0
 Conc: N.D.



#28 Decachlorobiphenyl

R.T.: 8.235 min
Delta R.T.: 0.000 min
Response: 24455398
Conc: 17.90 ng/ml

Instrument :
ECD_D
ClientSampleId :
LITTLE-FALLS-TROPHY-SINK-HOL



#28 Decachlorobiphenyl

R.T.: 9.086 min
Delta R.T.: 0.000 min
Response: 79268036
Conc: 20.48 ng/ml