

Data Path : Z:\pestpcbsrv\HPCHEM1\ECD_D\Data\PD092821\
 Data File : PD065954.D
 Signal(s) : Signal #1: ECD1A.ch Signal #2: ECD2B.ch
 Acq On : 28 Sep 2021 16:15
 Operator : AR\AJ
 Sample : I.BLK
 Misc :
 ALS Vial : 2 Sample Multiplier: 1

Instrument :
 ECD_D
 ClientSampleId :
 I.BLK

Integration File signal 1: autoint1.e
 Integration File signal 2: autoint2.e
 Quant Time: Sep 28 17:35:48 2021
 Quant Method : Z:\pestpcbsrv\HPCHEM1\ECD_D\Method\PD092221.M
 Quant Title : GC Extractables
 QLast Update : Thu Sep 23 12:18:33 2021
 Response via : Initial Calibration
 Integrator: ChemStation

Volume Inj. : 2 µl
 Signal #1 Phase : ZB-MR2 Signal #2 Phase: ZB-MR1
 Signal #1 Info : 30M x 0.32mm x0.2 Signal #2 Info : 30M x 0.32mm x 0.50µm

Compound	RT#1	RT#2	Resp#1	Resp#2	ng/ml	ng/ml

System Monitoring Compounds						
1) SA Tetrachlo...	3.496	4.012	18129946	141.4E6	24.482	24.622
28) SA Decachlor...	8.242	9.090	26527146	86267639	19.420	22.290

Target Compounds

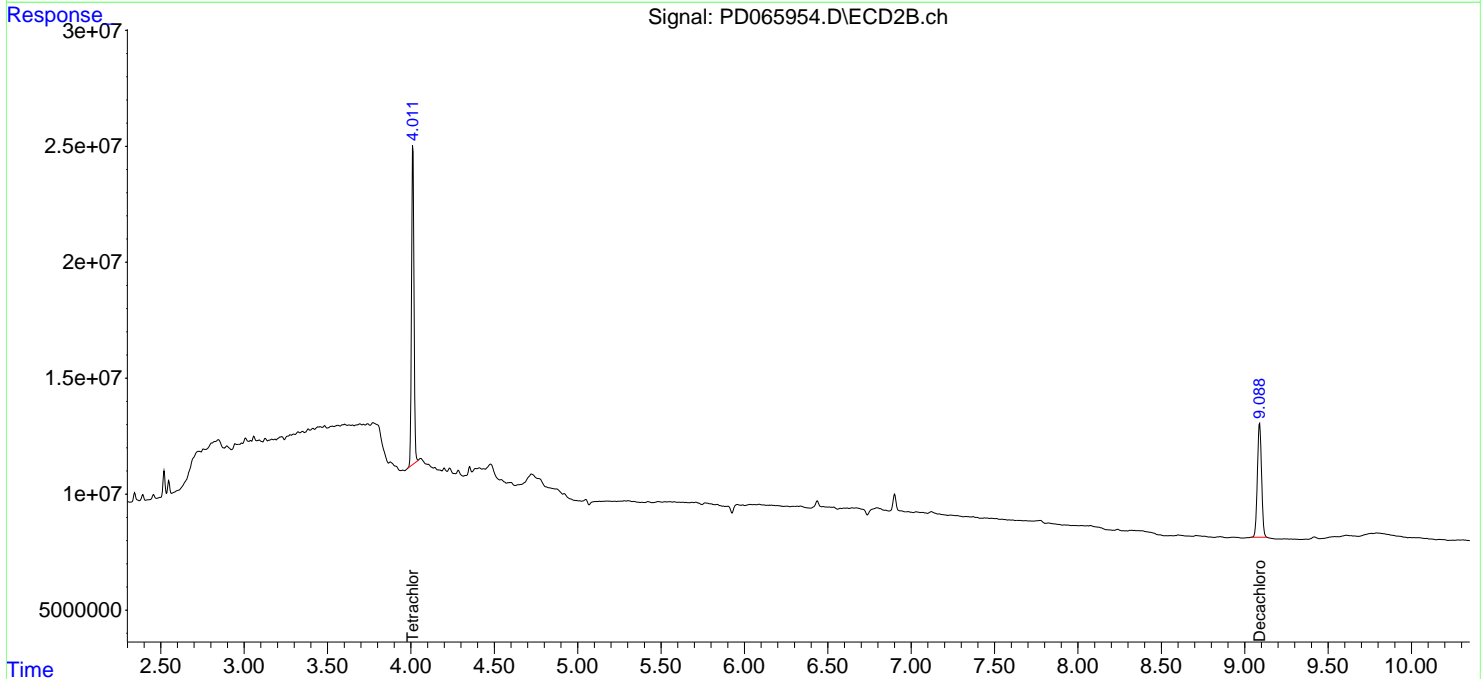
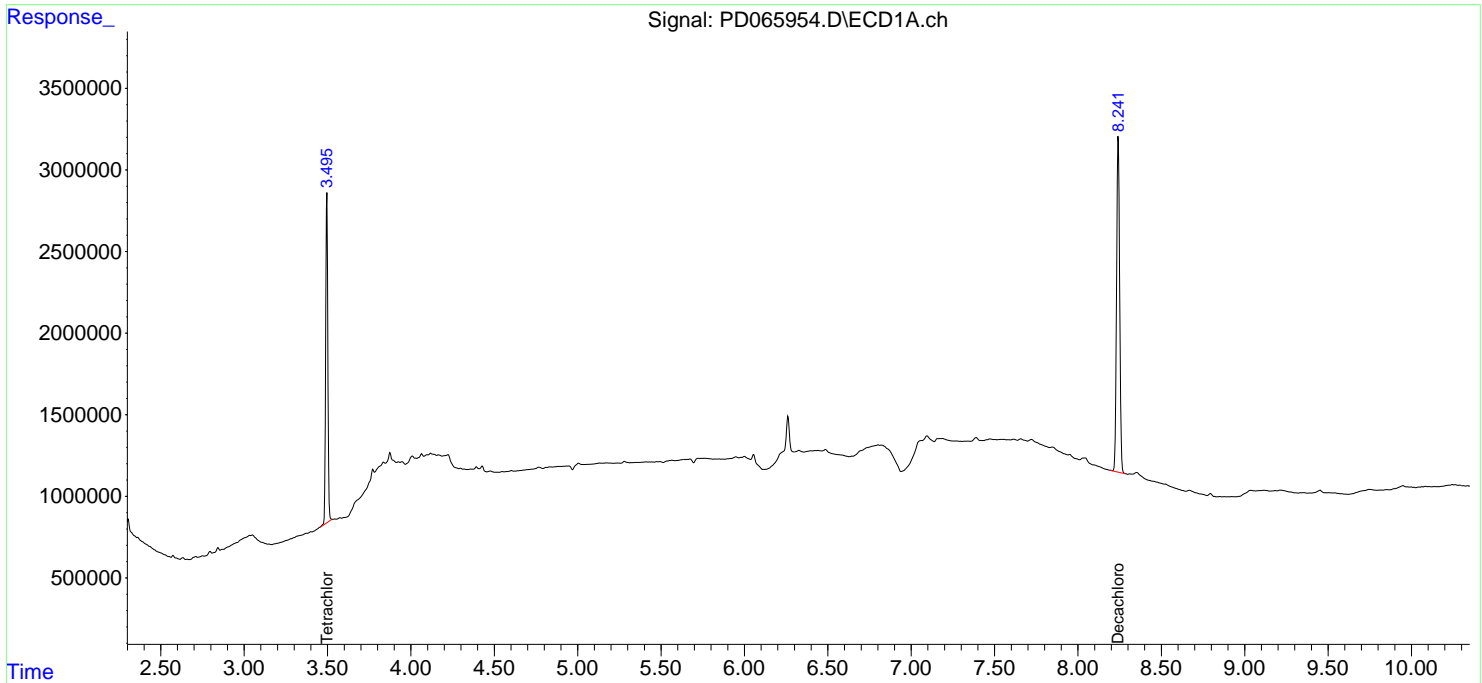
(f)=RT Delta > 1/2 Window (#)=Amounts differ by > 25% (m)=manual int.

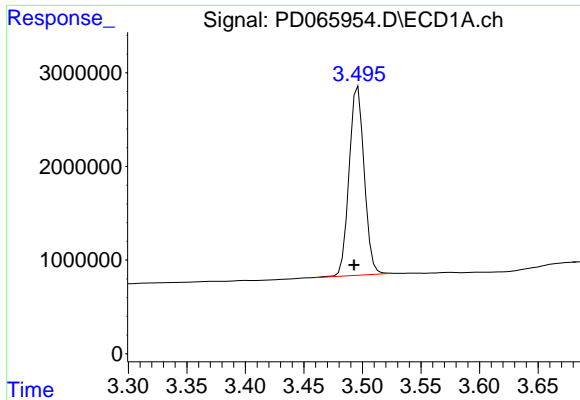
Data Path : Z:\pestpcbsrv\HPCHEM1\ECD_D\Data\PD092821\
 Data File : PD065954.D
 Signal(s) : Signal #1: ECD1A.ch Signal #2: ECD2B.ch
 Acq On : 28 Sep 2021 16:15
 Operator : AR\AJ
 Sample : I.BLK
 Misc :
 ALS Vial : 2 Sample Multiplier: 1

Instrument :
 ECD_D
ClientSampled :
 I.BLK

Integration File signal 1: autoint1.e
 Integration File signal 2: autoint2.e
 Quant Time: Sep 28 17:35:48 2021
 Quant Method : Z:\pestpcbsrv\HPCHEM1\ECD_D\Method\PD092221.M
 Quant Title : GC Extractables
 QLast Update : Thu Sep 23 12:18:33 2021
 Response via : Initial Calibration
 Integrator: ChemStation

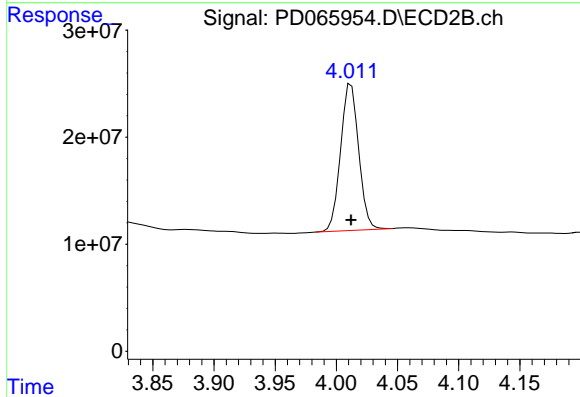
Volume Inj. : 2 µl
 Signal #1 Phase : ZB-MR2 Signal #2 Phase: ZB-MR1
 Signal #1 Info : 30M x 0.32mm x0.2 Signal #2 Info : 30M x 0.32mm x 0.50µm



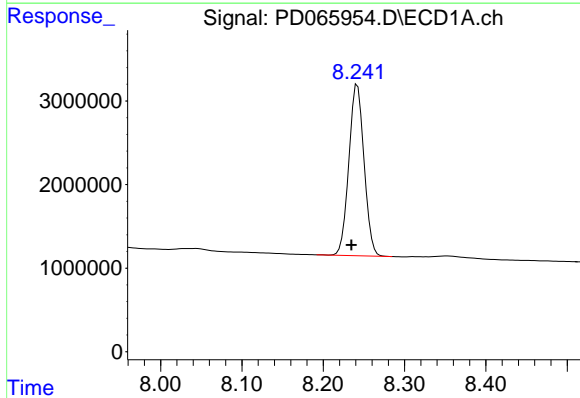


#1 Tetrachloro-m-xylene
 R.T.: 3.496 min
 Delta R.T.: 0.003 min
 Response: 18129946
 Conc: 24.48 ng/ml

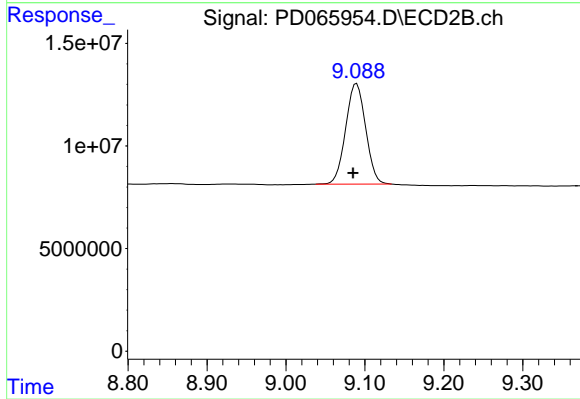
Instrument :
 ECD_D
 ClientSampled :
 I.BLK



#1 Tetrachloro-m-xylene
 R.T.: 4.012 min
 Delta R.T.: 0.000 min
 Response: 141380173
 Conc: 24.62 ng/ml



#28 Decachlorobiphenyl
 R.T.: 8.242 min
 Delta R.T.: 0.007 min
 Response: 26527146
 Conc: 19.42 ng/ml



#28 Decachlorobiphenyl
 R.T.: 9.090 min
 Delta R.T.: 0.005 min
 Response: 86267639
 Conc: 22.29 ng/ml