

Data Path : Z:\pestpcbsrv\HPCHEM1\ECD_D\Data\PD092822\
 Data File : PD072089.D
 Signal(s) : Signal #1: ECD1A.ch Signal #2: ECD2B.ch
 Acq On : 28 Sep 2022 18:10
 Operator : AR\AJ
 Sample : N4824-07MSD
 Misc :
 ALS Vial : 21 Sample Multiplier: 1

Instrument :
 ECD_D
ClientSampleId :
 CB8P3MSD

Manual Integrations
APPROVED
 Reviewed By :Abdul Mirza 09/29/2022
 Supervised By :Ankita Jodhani 09/29/2022

Integration File signal 1: autoint1.e
 Integration File signal 2: autoint2.e
 Quant Time: Sep 29 04:39:28 2022
 Quant Method : Z:\pestpcbsrv\HPCHEM1\ECD_D\Method\PD092422CLP.M
 Quant Title : GC Extractables
 QLast Update : Fri Sep 23 17:46:27 2022
 Response via : Initial Calibration
 Integrator: ChemStation

Volume Inj. : 1 µl
 Signal #1 Phase : ZB-MR2 Signal #2 Phase: ZB-MR1
 Signal #1 Info : 30M x 0.32mm x0.2 Signal #2 Info : 30M x 0.32mm x 0.50µm

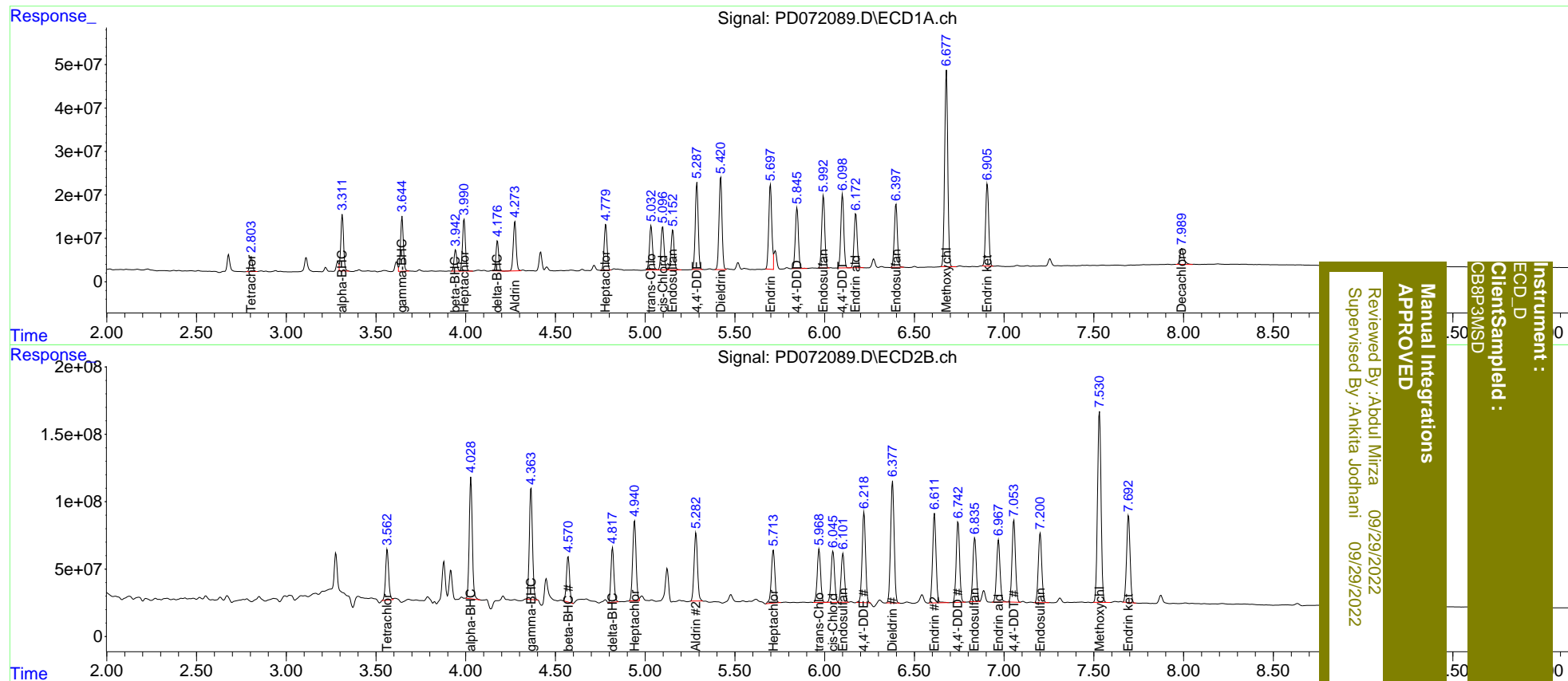
Compound	RT#1	RT#2	Resp#1	Resp#2	ng/ml	ng/ml
System Monitoring Compounds						
1) SA Tetrachlo...	2.805	3.562	37132382	448.6E6	14.646	14.560m
2) SA Decachlor...	7.991	9.086	53306192	184.7E6	22.738	20.619
Target Compounds						
2) A alpha-BHC	3.311	4.029	137.0E6	1068.9E6	36.981m	25.125 #
3) MA gamma-BHC...	3.644	4.363	134.0E6	1016.5E6	38.326m	28.730m#
4) MA Heptachlor	3.991	4.940	134.4E6	780.6E6	37.838	30.951m
5) MB Aldrin	4.274	5.283	130.0E6	665.2E6	36.569	30.271
6) B beta-BHC	3.944	4.571	51706780	408.7E6	32.306	27.468
7) B delta-BHC	4.177	4.818	71420010	467.8E6	20.169	18.773
8) B Heptachlo...	4.781	5.713	118.0E6	545.3E6	37.059	35.762m
9) A Endosulfan I	5.154	6.102	109.7E6	472.2E6	38.912	31.674
10) B trans-Chl...	5.033	5.969	121.8E6	512.3E6	37.278	29.645
11) B cis-Chlor...	5.098	6.047	117.3E6	510.8E6	36.568	30.345
12) B 4,4'-DDE	5.288	6.218	225.8E6	890.5E6	76.278	59.343m
13) MA Dieldrin	5.420	6.379	247.4E6	1239.2E6	80.465m	82.067
14) MA Endrin	5.697	6.612	235.5E6	881.9E6	88.810m	71.541
15) B Endosulfa...	5.993	6.837	197.8E6	623.0E6	79.270	51.287 #
16) A 4,4'-DDD	5.846	6.744	165.9E6	788.9E6	71.044	68.297
17) MA 4,4'-DDT	6.100	7.055	194.7E6	808.5E6	81.275	71.059
18) B Endrin al...	6.174	6.967	149.9E6	618.6E6	69.025	59.653m
19) B Endosulfa...	6.398	7.201	172.0E6	690.5E6	68.168	59.935
20) A Methoxychlor	6.679	7.531	546.6E6	1935.7E6	425.289	372.364
21) B Endrin ke...	6.907	7.693	225.1E6	869.4E6	79.608	69.617

(f)=RT Delta > 1/2 Window (#)=Amounts differ by > 25% (m)=manual int.

Data Path : Z:\pestpcbsrv\HPCHEM1\ECD_D\Data\PD092822\
 Data File : PD072089.D
 Signal(s) : Signal #1: ECD1A.ch Signal #2: ECD2B.ch
 Acq On : 28 Sep 2022 18:10
 Operator : AR\AJ
 Sample : N4824-07MSD
 Misc :
 ALS Vial : 21 Sample Multiplier: 1

Integration File signal 1: autoint1.e
 Integration File signal 2: autoint2.e
 Quant Time: Sep 29 04:39:28 2022
 Quant Method : Z:\pestpcbsrv\HPCHEM1\ECD_D\Method\PD092422CLP.M
 Quant Title : GC Extractables
 QLast Update : Fri Sep 23 17:46:27 2022
 Response via : Initial Calibration
 Integrator: ChemStation

Volume Inj. : 1 µl
 Signal #1 Phase : ZB-MR2 Signal #2 Phase: ZB-MR1
 Signal #1 Info : 30M x 0.32mm x0.2 Signal #2 Info : 30M x 0.32mm x 0.50µm



Instrument : ECD_D
 Client Sampled : CB8P3MSD
 Manual Integrations APPROVED
 Reviewed By : Aboul Mirza 09/29/2022
 Supervised By : Ankita Jodhani 09/29/2022