

Data Path : Z:\pestpcbsrv\HPCHEM1\ECD\_D\Data\PD092822\  
 Data File : PD072081.D  
 Signal(s) : Signal #1: ECD1A.ch Signal #2: ECD2B.ch  
 Acq On : 28 Sep 2022 16:03  
 Operator : AR\AJ  
 Sample : PB147967BL  
 Misc :  
 ALS Vial : 13 Sample Multiplier: 1

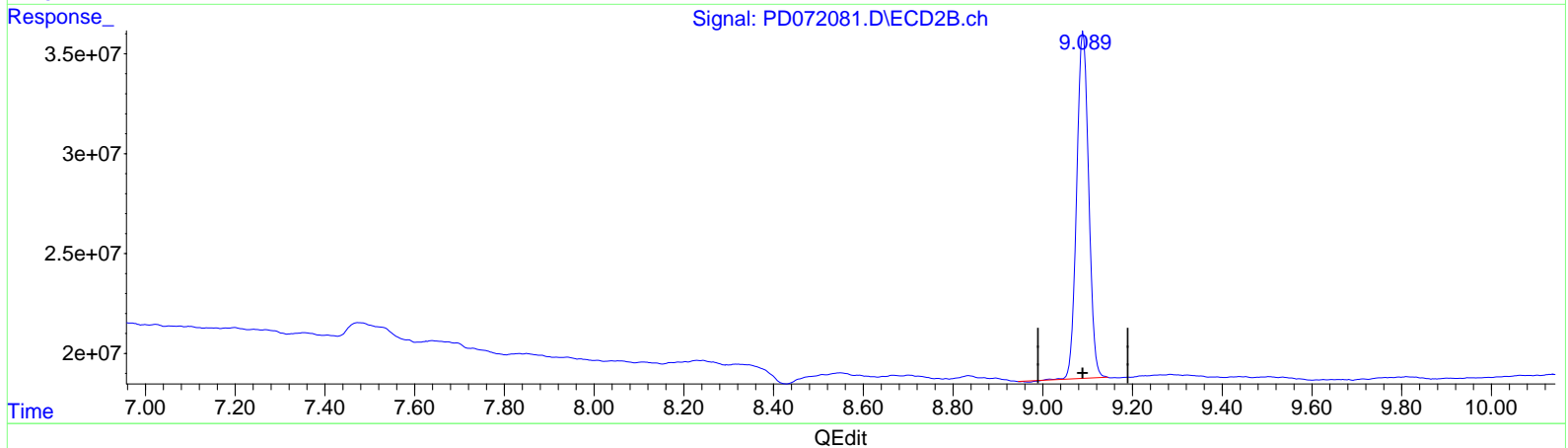
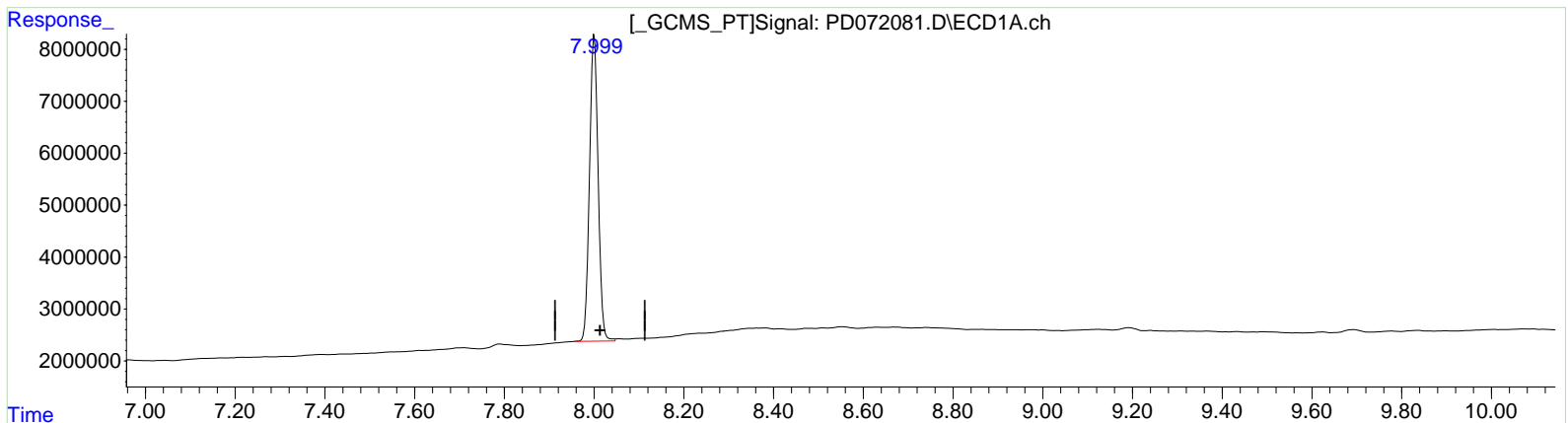
Instrument :  
 ECD\_D  
 ClientSampleId :  
 PBLK967

Manual Integrations APPROVED

Reviewed By : Abdul Mirza 09/29/2022  
 Supervised By : Ankita Jodhani 09/29/2022

Integration File signal 1: autoint1.e  
 Integration File signal 2: autoint2.e  
 Quant Time: Sep 29 04:36:24 2022  
 Quant Method : Z:\pestpcbsrv\HPCHEM1\ECD\_D\Method\PD092422CLP.M  
 Quant Title : GC Extractables  
 QLast Update : Fri Sep 23 17:46:27 2022  
 Response via : Initial Calibration  
 Integrator: ChemStation

Volume Inj. : 1 µl  
 Signal #1 Phase : ZB-MR2 Signal #2 Phase: ZB-MR1  
 Signal #1 Info : 30M x 0.32mm x 0.2 Signal #2 Info : 30M x 0.32mm x 0.50µm



(27) Decachlorobiphenyl (SA)

8.001min 33.710 ng/ml

response 79029662

(27) Decachlorobiphenyl #2 (SA)

9.090min 35.966 ng/ml

response 322166675

Data Path : Z:\pestpcbsrv\HPCHEM1\ECD\_D\Data\PD092822\  
 Data File : PD072081.D  
 Signal(s) : Signal #1: ECD1A.ch Signal #2: ECD2B.ch  
 Acq On : 28 Sep 2022 16:03  
 Operator : AR\AJ  
 Sample : PB147967BL  
 Misc :  
 ALS Vial : 13 Sample Multiplier: 1

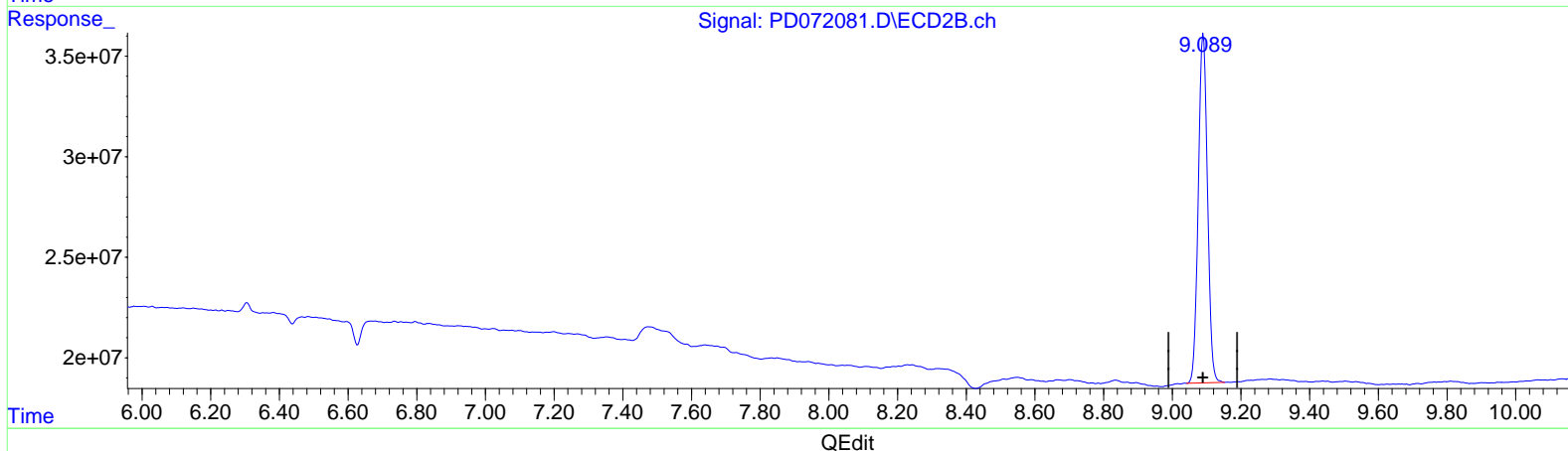
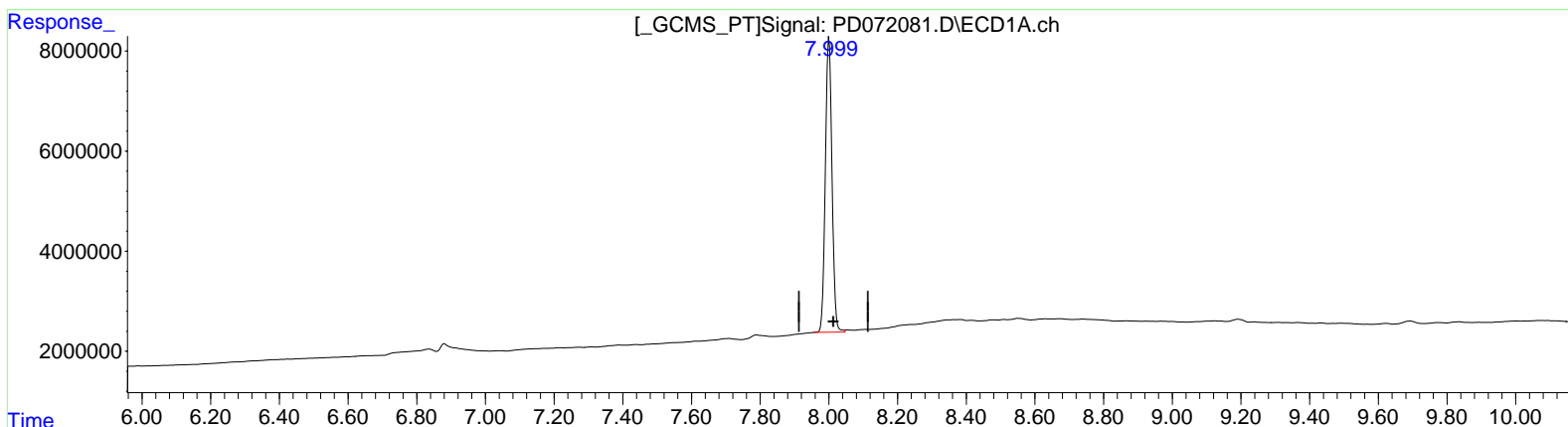
Instrument :  
 ECD\_D  
 ClientSampleId :  
 PBLK967

Manual Integrations APPROVED

Reviewed By : Abdul Mirza 09/29/2022  
 Supervised By : Ankita Jodhani 09/29/2022

Integration File signal 1: autoint1.e  
 Integration File signal 2: autoint2.e  
 Quant Time: Sep 29 04:36:24 2022  
 Quant Method : Z:\pestpcbsrv\HPCHEM1\ECD\_D\Method\PD092422CLP.M  
 Quant Title : GC Extractables  
 QLast Update : Fri Sep 23 17:46:27 2022  
 Response via : Initial Calibration  
 Integrator: ChemStation

Volume Inj. : 1 µl  
 Signal #1 Phase : ZB-MR2 Signal #2 Phase: ZB-MR1  
 Signal #1 Info : 30M x 0.32mm x 0.2 Signal #2 Info : 30M x 0.32mm x 0.50µm



(27) Decachlorobiphenyl (SA)  
 8.001min 33.710 ng/ml  
 response 79029662

(27) Decachlorobiphenyl #2 (SA)  
 9.089min 35.961 ng/ml m  
 response 322114476