

Data Path : Z:\pestpcbsrv\HPCHEM1\ECD_D\Data\PD093020\
 Data File : PD059421.D
 Signal(s) : Signal #1: ECD1A.ch Signal #2: ECD2B.ch
 Acq On : 29 Sep 2020 18:19
 Operator : DD\AJ
 Sample : TOXAPH301
 Misc :
 ALS Vial : 6 Sample Multiplier: 1

Instrument :
 ECD_D
 ClientSampleId :
 TOXAPH3003

Integration File signal 1: autoint1.e
 Integration File signal 2: autoint2.e
 Quant Time: Sep 30 05:13:29 2020
 Quant Method : Z:\pestpcbsrv\HPCHEM1\ECD_D\Method\PD093020CLP.M
 Quant Title : GC Extractables
 QLast Update : Wed Sep 30 05:12:39 2020
 Response via : Initial Calibration
 Integrator: ChemStation

Volume Inj. : 1 µl
 Signal #1 Phase : ZB-MR2 Signal #2 Phase: ZB-MR1
 Signal #1 Info : 30M x 0.32mm x0.2 Signal #2 Info : 30M x 0.32mm x 0.50µm

Compound	RT#1	RT#2	Resp#1	Resp#2	ng/ml	ng/ml

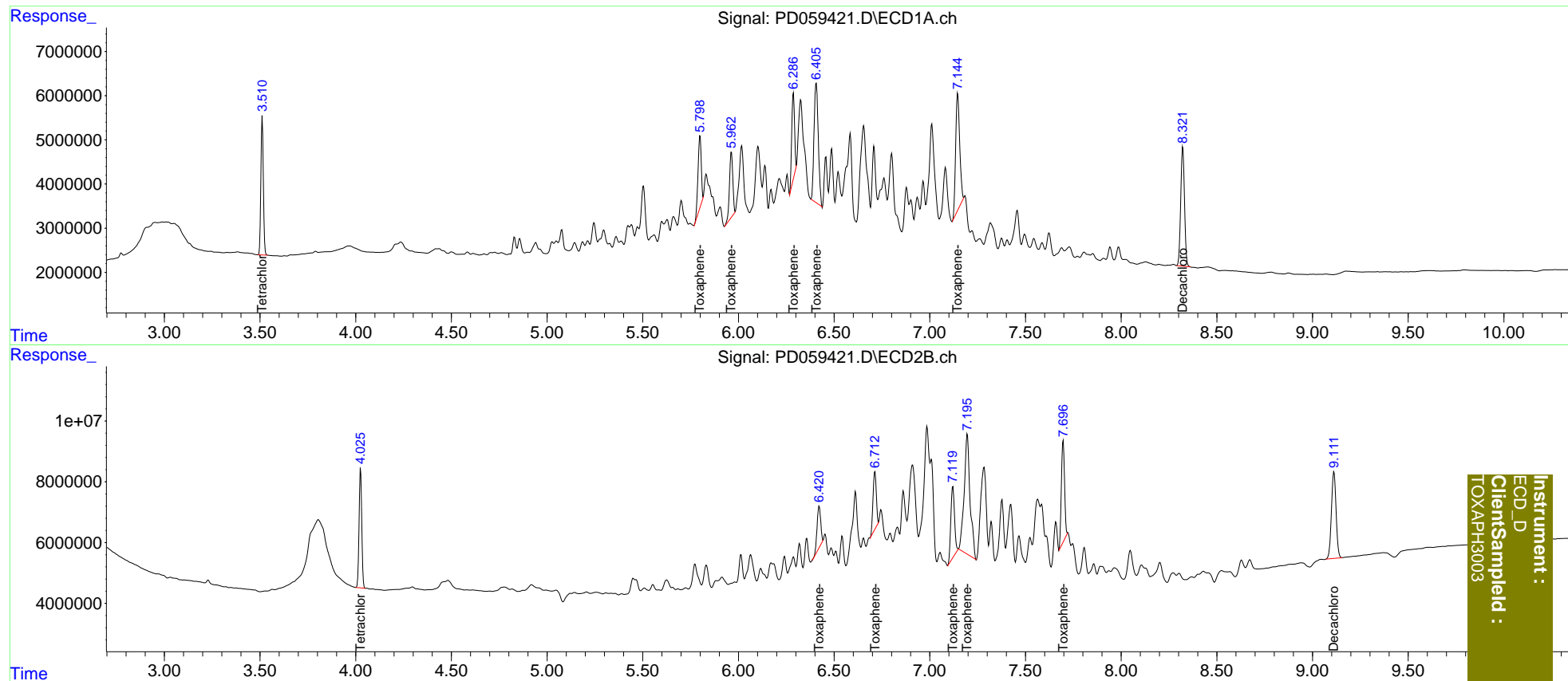
System Monitoring Compounds						
1) SA Tetrachlo...	3.512	4.026	28019160	38195439	20.000	20.000
27) SA Decachlor...	8.322	9.113	37054823	48235410	40.000	40.000
Target Compounds						
22) Toxaphene-1	5.800	6.422	18671969	17653187	2000.000	2000.000
23) Toxaphene-2	5.963	6.714	17703993	22405615	2000.000	2000.000
24) Toxaphene-3	6.287	7.120	19686758	31303177	2000.000	2000.000
25) Toxaphene-4	6.407	7.196	41859828	84584464	2000.000	2000.000
26) Toxaphene-5	7.146	7.697	38693437	39387149	2000.000	2000.000

(f)=RT Delta > 1/2 Window (#)=Amounts differ by > 25% (m)=manual int.

Data Path : Z:\pestpcbsrv\HPCHEM1\ECD_D\Data\PD093020\
 Data File : PD059421.D
 Signal(s) : Signal #1: ECD1A.ch Signal #2: ECD2B.ch
 Acq On : 29 Sep 2020 18:19
 Operator : DD\AJ
 Sample : TOXAPH301
 Misc :
 ALS Vial : 6 Sample Multiplier: 1

Integration File signal 1: autoint1.e
 Integration File signal 2: autoint2.e
 Quant Time: Sep 30 05:13:29 2020
 Quant Method : Z:\pestpcbsrv\HPCHEM1\ECD_D\Method\PD093020CLP.M
 Quant Title : GC Extractables
 QLast Update : Wed Sep 30 05:12:39 2020
 Response via : Initial Calibration
 Integrator: ChemStation

Volume Inj. : 1 µl
 Signal #1 Phase : ZB-MR2 Signal #2 Phase: ZB-MR1
 Signal #1 Info : 30M x 0.32mm x0.2 Signal #2 Info : 30M x 0.32mm x 0.50µm



Instrument :
 ECD_D
 ClientSampleId :
 TOXAPH3003